

# POINT WEST CORPORATE CENTER

1610 ARDEN WAY, SACRAMENTO, CA



GREAT CENTRAL LOCATION  
WITH BEST-IN-CLASS AMENITIES

PROMINENT BUILDING SIGNAGE AVAILABLE

Exclusively Marketed By: \_\_\_\_\_

**NEWMARK**



[pointwestportfolio.com](http://pointwestportfolio.com)

**Jack Blackmon**

916.494.2349

[jack.blackmon@nmrk.com](mailto:jack.blackmon@nmrk.com)

CA RE License #01999561

**Lucas Lugo**

916.569.2322

[lucas.lugo@nmrk.com](mailto:lucas.lugo@nmrk.com)

CA RE License #01916673

**Jodie Robinson**

916.569.2318

[jodie.robinson@nmrk.com](mailto:jodie.robinson@nmrk.com)

CA RE License #02214357



# POINT WEST CORPORATE CENTER

1610 ARDEN WAY  
SACRAMENTO, CA

## PROPERTY HIGHLIGHTS



Classic brick architecture with expansive windowline and courtyard views



Professional Property Management and facilities engineer



Onsite fitness center with showers



Beautiful courtyard with shaded outdoor seating and outdoor water feature



Located within minutes of Sacramento's CBD



Onsite Cafe. Restaurants and retail services immediately adjacent to the property & short walk to Arden mall



Immediate freeway access to Business Hwy 80



Onsite security patrol



Onsite training & conference room



## CONCIERGE SERVICES



Basin Street Properties is proud to announce our newest tenant amenity – Concierge Services. Tenants have access to family entertainment, travel arrangements, and a host of other business services.



### Personal Services

- Housekeeping / sitting
- Pet sitting / grooming
- Auto detailing / maintenance
- Dry cleaning / laundry
- Fitness trainer / massage services
- Customized personal shopping



### Entertainment Services

- Tickets for concerts, theater and sporting events
- Restaurant reservations
- Visiting client and guest arrangements



### Event and Meeting Services

- Site selection
- Catering, food and beverage arrangements
- Multi-media / A.V. arrangements





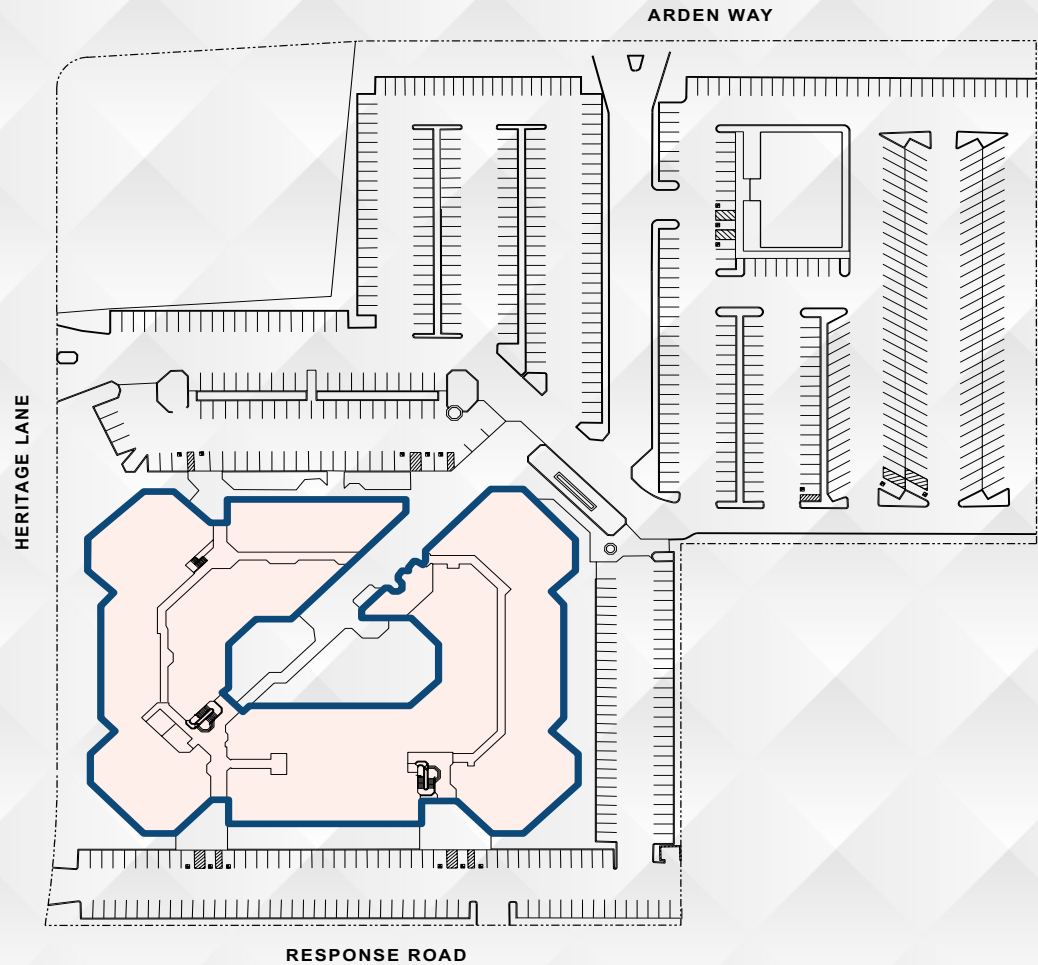


# POINT WEST CORPORATE CENTER

1610 ARDEN WAY  
SACRAMENTO, CA



## SITE PLAN





# POINT WEST CORPORATE CENTER

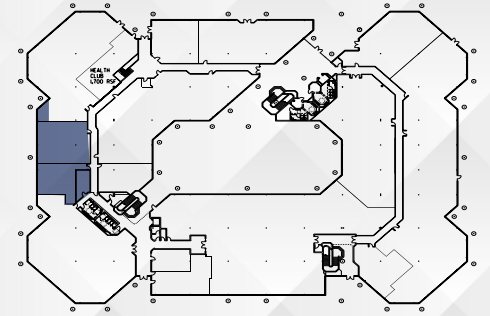
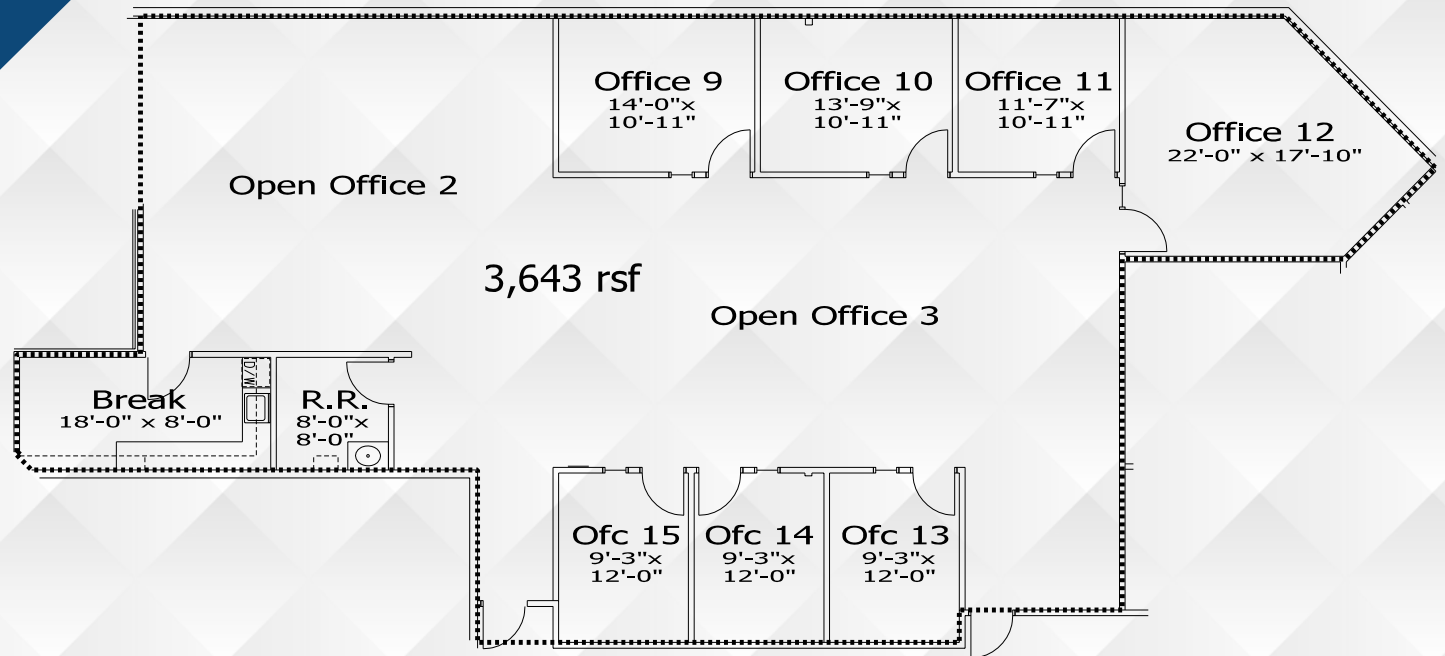
1610 ARDEN WAY  
SACRAMENTO, CA

## AMENITIES MAP



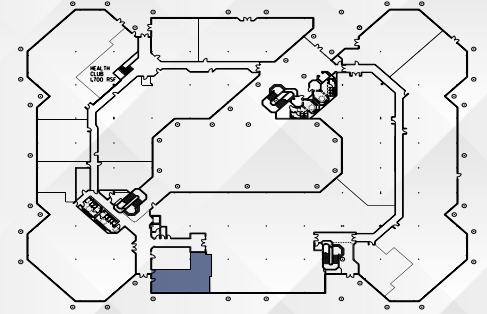


**FLOOR PLANS**



**FIRST FLOOR | 3,643 RSF | SUITE 150**

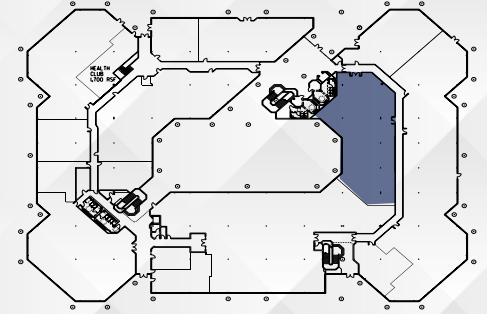
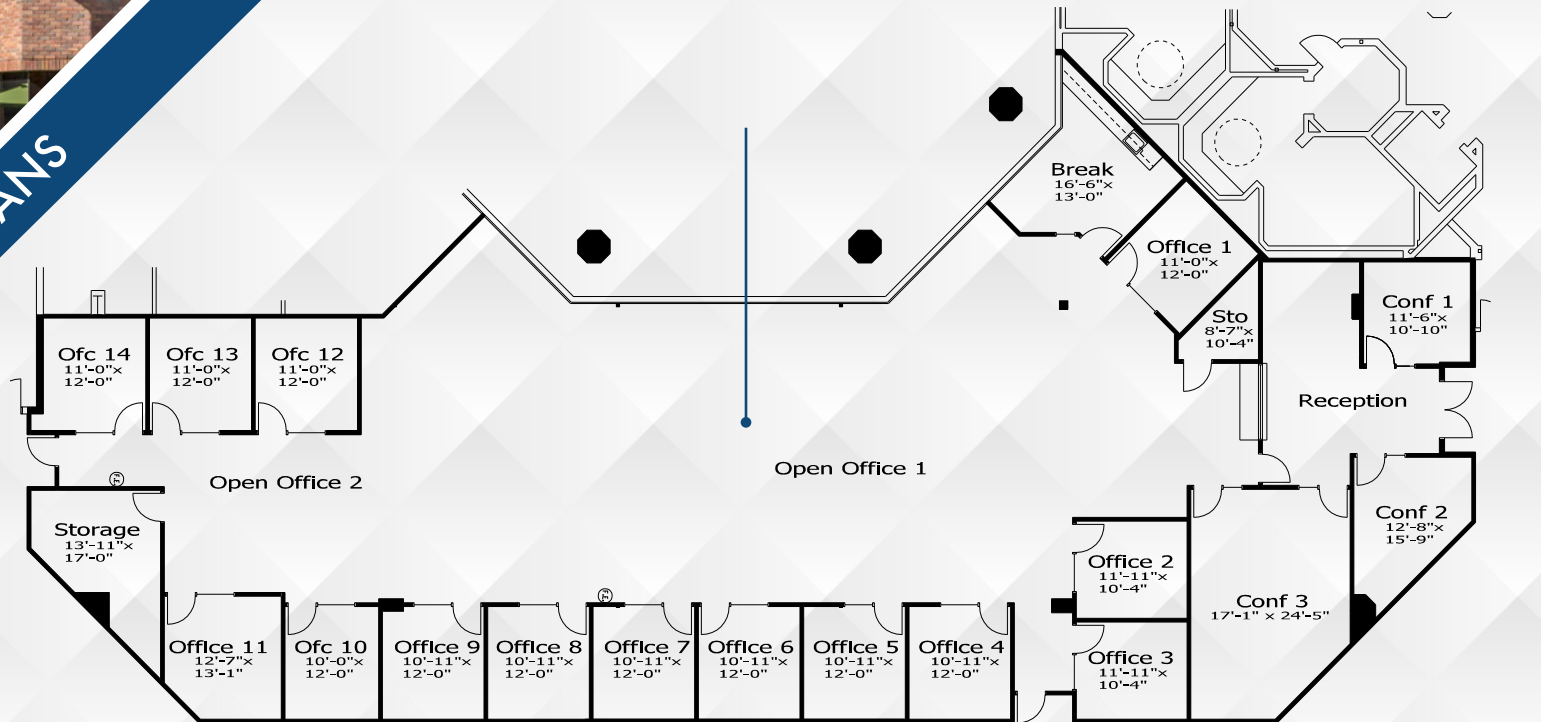
**FLOOR PLANS**



**FIRST FLOOR | 2,164 RSF | SUITE 157**



FLOOR PLANS



FIRST FLOOR | 8,116 RSF | SUITE 190



FLOOR PLANS



299

SECOND FLOOR | 2,578 RSF | SUITE 299



# POINT WEST CORPORATE CENTER

1610 ARDEN WAY, SACRAMENTO, CA



DISCLAIMER: The distributor of this communication is performing acts for which a real estate license is required. The information contained herein has been obtained from sources deemed reliable but has not been verified and no guarantee, warranty or representation, either express or implied, is made with respect to such information. Terms of sale or lease and availability are subject to change or withdrawal without notice.

**NEWMARK**



[pointwestportfolio.com](http://pointwestportfolio.com)

**Jack Blackmon**  
916.494.2349  
jack.blackmon@nmrk.com  
CA RE License #01999561

**Lucas Lugo**  
916.569.2322  
lucas.lugo@nmrk.com  
CA RE License #01916673

**Jodie Robinson**  
916.569.2318  
jodie.robinson@nmrk.com  
CA RE License #02214357

Exclusively Marketed By: \_\_\_\_\_