

# POINT WEST COMMERCE CENTRE

1545 RIVER PARK DRIVE, SACRAMENTO, CA



CLASS A OFFICES MINUTES  
FROM DOWNTOWN @ HWY 80  
& ARDEN FAIR MALL

**NEWMARK**



Exclusively Marketed By: \_\_\_\_\_

Jack Blackmon  
916.494.2349  
jack.blackmon@nmrk.com  
CA RE License #01999561

Lucas Lugo  
916.569.2322  
lucas.lugo@nmrk.com  
CA RE License #01916673

Jodie Robinson  
916.569.2318  
jodie.robinson@nmrk.com  
CA RE License #02214357

# POINT WEST COMMERCE CENTRE

1545 RIVER PARK DRIVE  
SACRAMENTO, CA

## PROPERTY HIGHLIGHTS



Onsite training & conference room



Fitness center with showers and lockers



Shaded decks and patios



4.5/1,000 parking



Short walk to Arden Fair Mall



Located within minutes of Sacramento's CBD



Direct access to the Capital City Freeway



Expansive and contiguous windowline



Prominent identity and freeway visibility



Café next door for breakfast and lunch

## CONCIERGE SERVICES



Basin Street Properties is proud to announce our newest tenant amenity – Concierge Services. Tenants have access to family entertainment, travel arrangements, and a host of other business services.



### Personal Services

- Housekeeping / sitting
- Pet sitting / grooming
- Auto detailing / maintenance
- Dry cleaning / laundry
- Fitness trainer / massage services
- Customized personal shopping



### Entertainment Services

- Tickets for concerts, theater and sporting events
- Restaurant reservations
- Visiting client and guest arrangements



### Event and Meeting Services

- Site selection
- Catering, food and beverage arrangements
- Multi-media / A.V. arrangements

# POINT WEST COMMERCE CENTRE

1545 RIVER PARK DRIVE  
SACRAMENTO, CA

## FIVE-STORY CLASS A OFFICE BUILDING

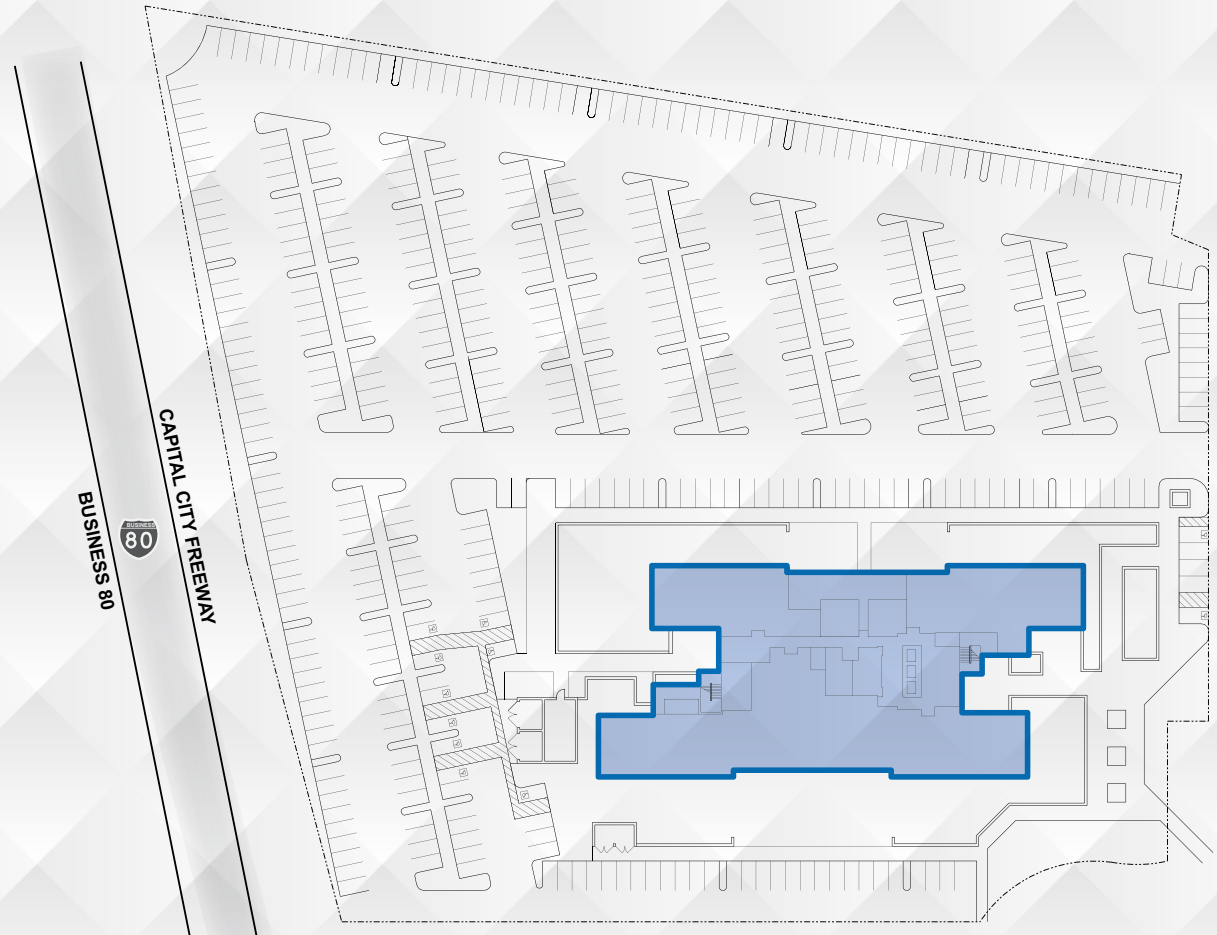


# POINT WEST COMMERCE CENTRE

1545 RIVER PARK DRIVE  
SACRAMENTO, CA



## SITE PLAN



# POINT WEST COMMERCE CENTRE

1545 RIVER PARK DRIVE  
SACRAMENTO, CA

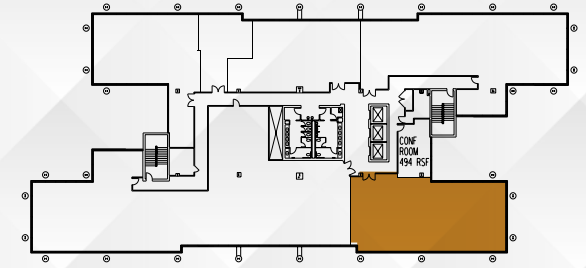
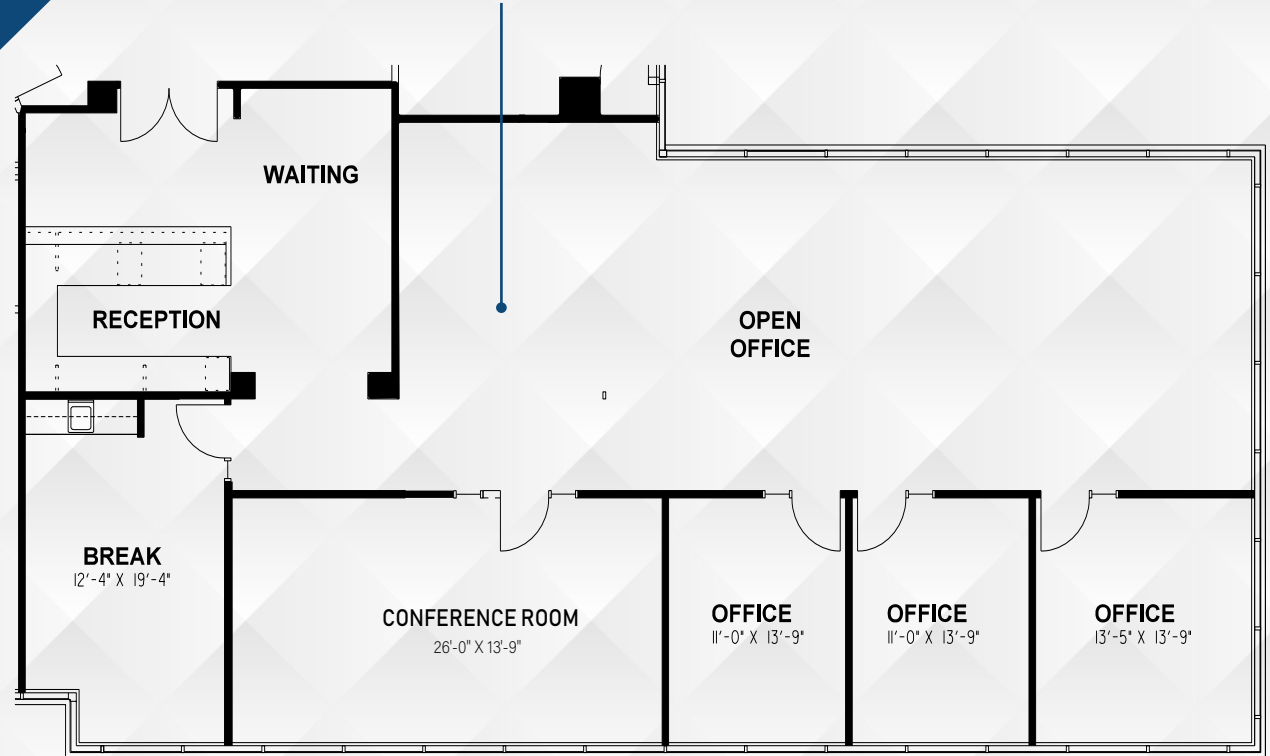
## AMENITIES MAP



# POINT WEST COMMERCE CENTRE

1545 RIVER PARK DRIVE  
SACRAMENTO, CA

## FLOOR PLANS

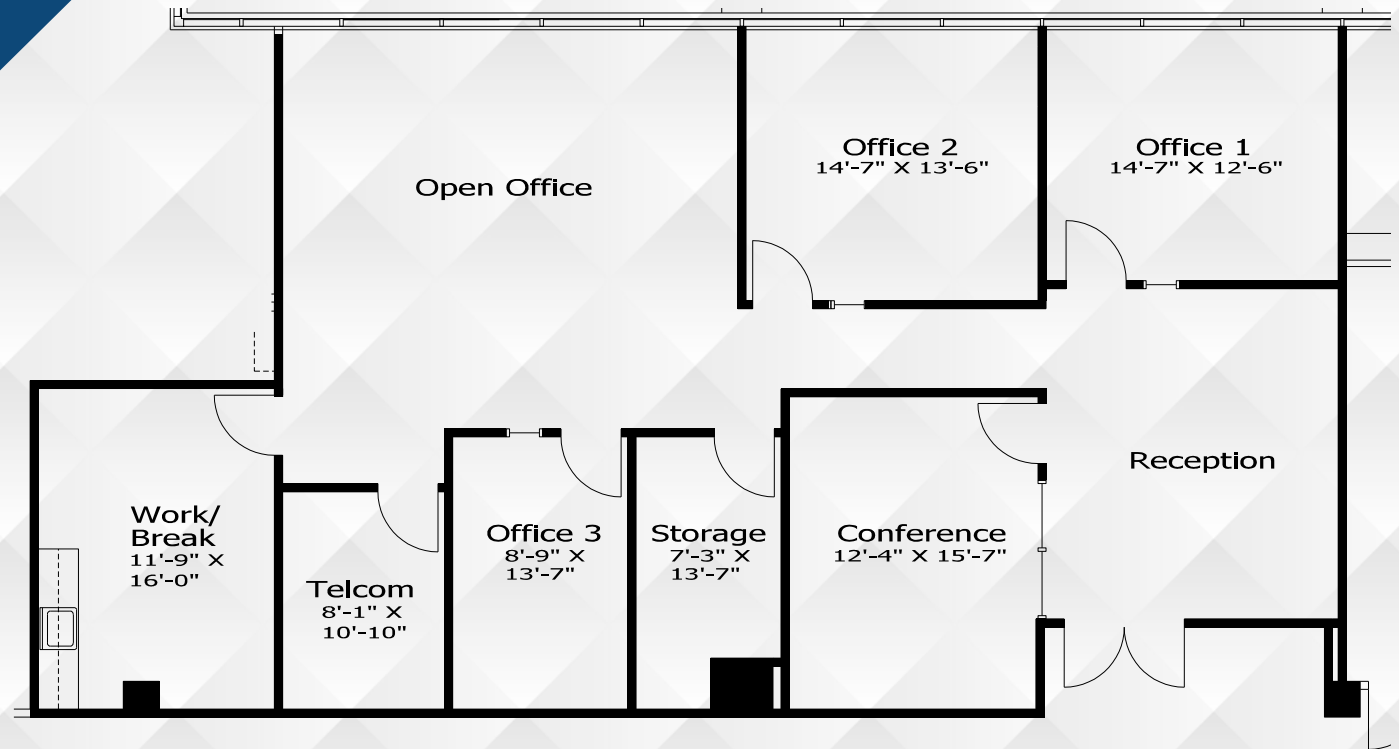
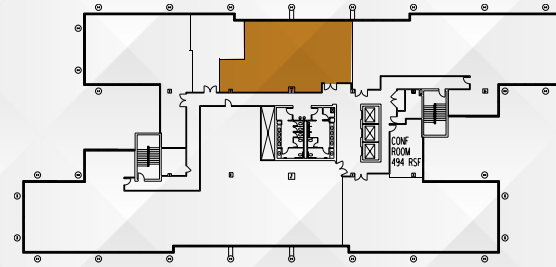


**SECOND FLOOR | 3,086 RSF | SUITE 200**

# POINT WEST COMMERCE CENTRE

1545 RIVER PARK DRIVE  
SACRAMENTO, CA

## FLOOR PLANS

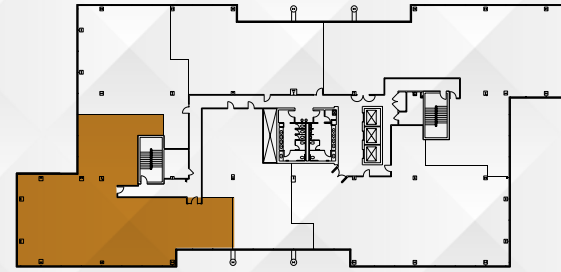


**SECOND FLOOR | 2,313 RSF | SUITE 202**

# POINT WEST COMMERCE CENTRE

1545 RIVER PARK DRIVE  
SACRAMENTO, CA

## FLOOR PLANS

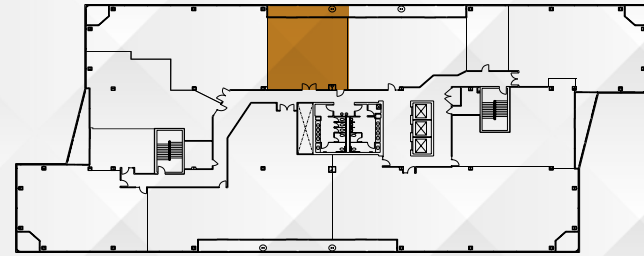


**THIRD FLOOR | 5,592 RSF | SUITE 325**

# POINT WEST COMMERCE CENTRE

1545 RIVER PARK DRIVE  
SACRAMENTO, CA

## FLOOR PLANS

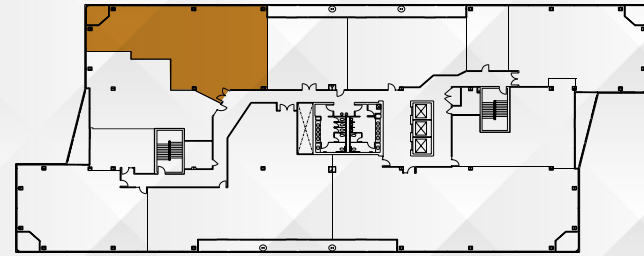


**FOURTH FLOOR | 1,641 RSF | SUITE 407**

# POINT WEST COMMERCE CENTRE

1545 RIVER PARK DRIVE  
SACRAMENTO, CA

## FLOOR PLANS

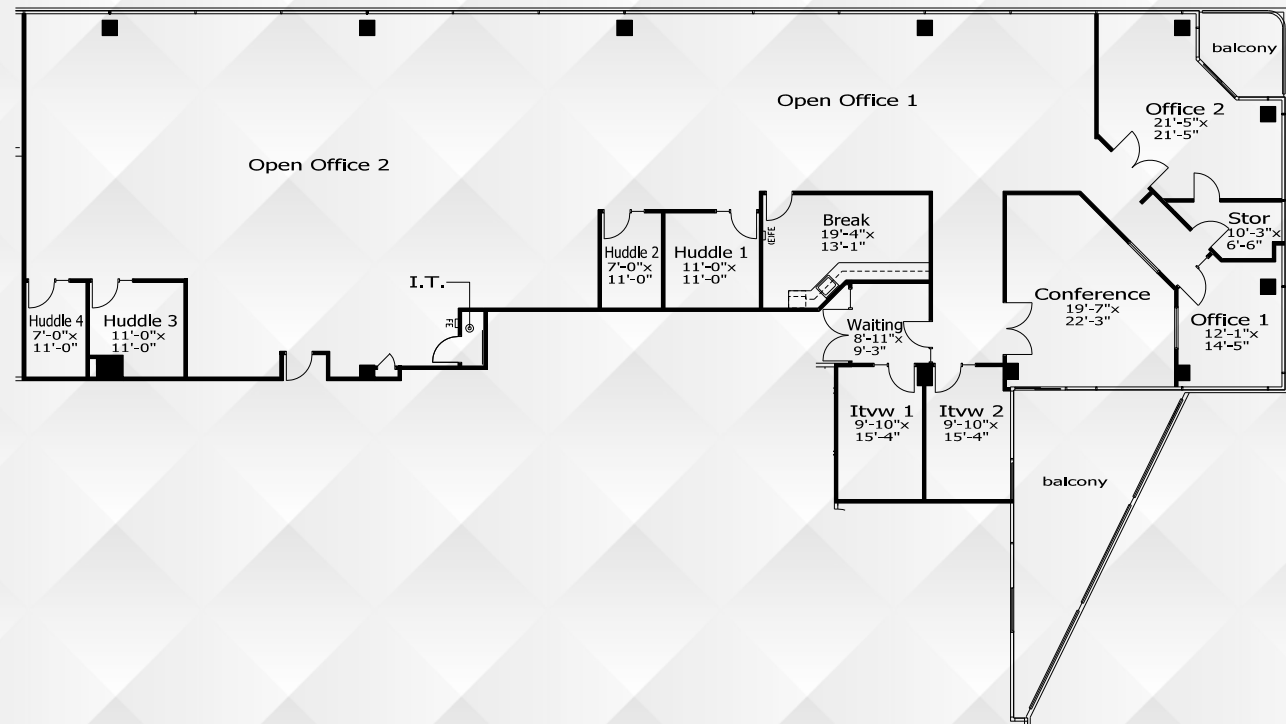
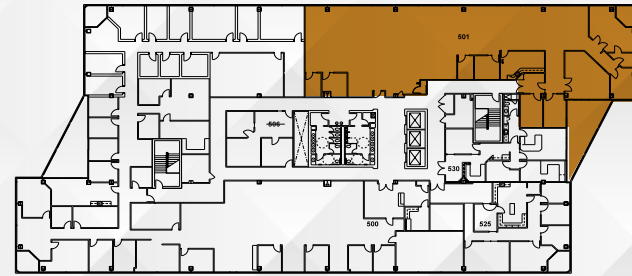


**FOURTH FLOOR | 3,145 RSF | SUITE 411**

# POINT WEST COMMERCE CENTRE

1545 RIVER PARK DRIVE  
SACRAMENTO, CA

## FLOOR PLANS



**FIFTH FLOOR | 7,474 RSF | SUITE 501**

# POINT WEST COMMERCE CENTRE

1545 RIVER PARK DRIVE, SACRAMENTO, CA



DISCLAIMER: The distributor of this communication is performing acts for which a real estate license is required. The information contained herein has been obtained from sources deemed reliable but has not been verified and no guarantee, warranty or representation, either express or implied, is made with respect to such information. Terms of sale or lease and availability are subject to change or withdrawal without notice. MP23-543 04-25

**NEWMARK**



Exclusively Marketed By: \_\_\_\_\_

Jack Blackmon  
916.494.2349  
jack.blackmon@nmrk.com  
CA RE License #01999561

Lucas Lugo  
916.569.2322  
lucas.lugo@nmrk.com  
CA RE License #01916673

Jodie Robinson  
916.569.2318  
jodie.robinson@nmrk.com  
CA RE License #02214357