

FOR LEASE 2455 Bennett Valley Road, Santa Rosa CA

# Waterfall Towers



**FREE PARKING: SAVE UP TO \$1,980/YEAR PER PARKING STALL**



FOR LEASE **2455 Bennett Valley Road, Santa Rosa CA**

# Waterfall Towers



## Class A Offices in Southeast Santa Rosa Business Park

Type:

**Office**

Address:

**2455 Bennett Valley Road  
Santa Rosa, CA**

Total SF

**95,056**

# of Floors

**Three Buildings:**

**Two 2 Stories**

**One 3-Story**

Parking

**FREE On-site**

**(Comparable Downtown Stalls are  
\$165/Month per Stall)**

### DESCRIPTION

Waterfall Towers is a 3-building complex totaling 95,056 square feet of Class A office space. The campus, located in the Eastside submarket, is situated on over five acres overlooking the hills of Santa Rosa. Situated in a park-like setting, it features a lake and dramatic fountain that creates a picturesque work environment.

### LOCATION

Waterfall Towers is located at the crossroads of Hwy 12 and Farmers Lane, with easy access to both Highways 12 and 101. In the immediate surrounding area are Farmers Lane Plaza, Montgomery Village Shopping Center and downtown Santa Rosa which feature lots of shopping, dining and assorted services.

### AMENITIES

The property offers a common conference room, walking distance to food and retailers and a bucolic park-like setting overlooking the Santa Rosa hills as well as a beautiful lake with a dramatic fountain. This property is locally owned and managed.

### KEY TENANTS

Soka Gakki International USA  
In Home Health LLC

Structural Design Group Inc.

**CRAIG SHAFER, REGIONAL MANAGER PM DESIGN GROUP:** "Basin Street is top notch. Organized, quick, efficient and accommodating."



EXCLUSIVELY MARKETING BY:

**Peter Briceño**  
DRE#: 01885655

**Dave Peterson**  
DRE#: 01280039

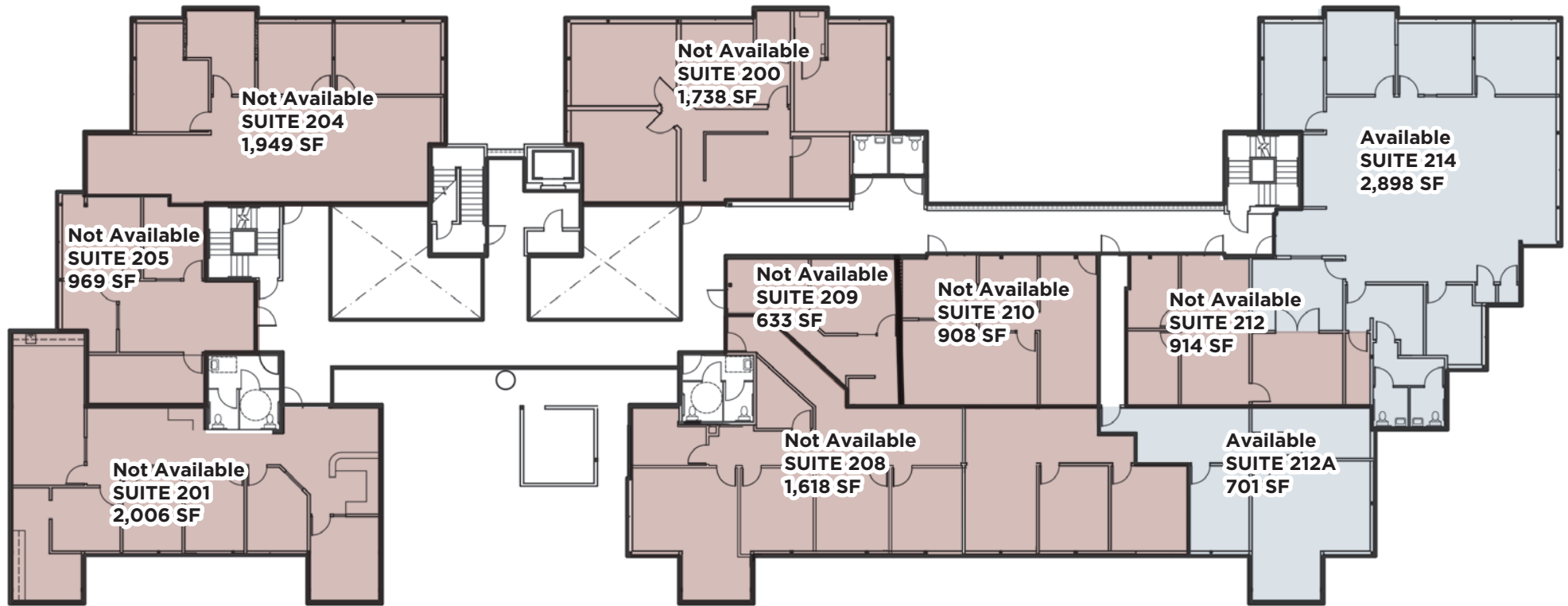
FOR LEASE **2455 Bennett Valley Road, Santa Rosa CA**  
**Waterfall Towers**



EXCLUSIVELY MARKETING BY:  
**Peter Briceño**  
707.528.1400 ext. 255

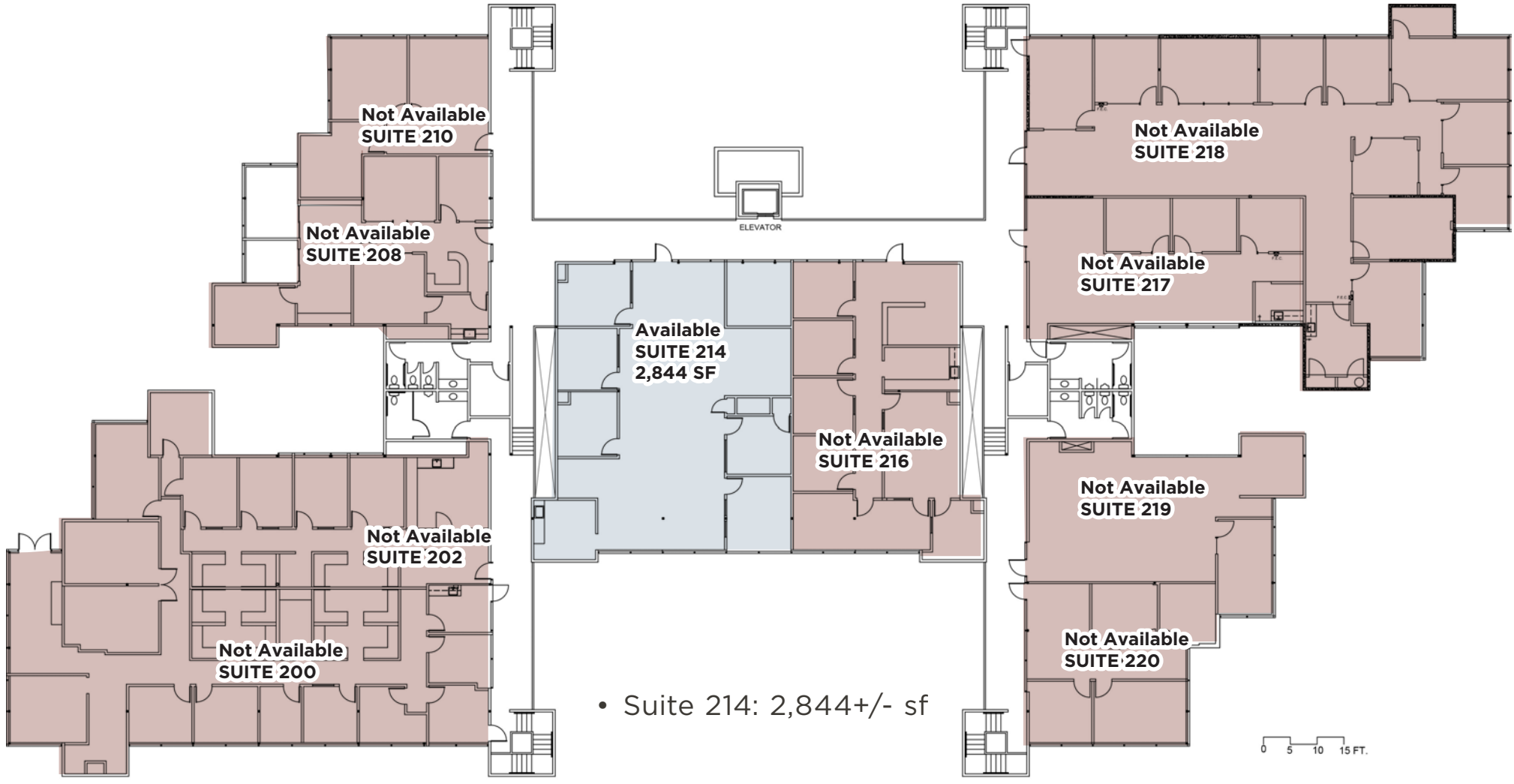
**Dave Peterson**  
707.528.1400 ext. 210

## Building B, 2nd Floor



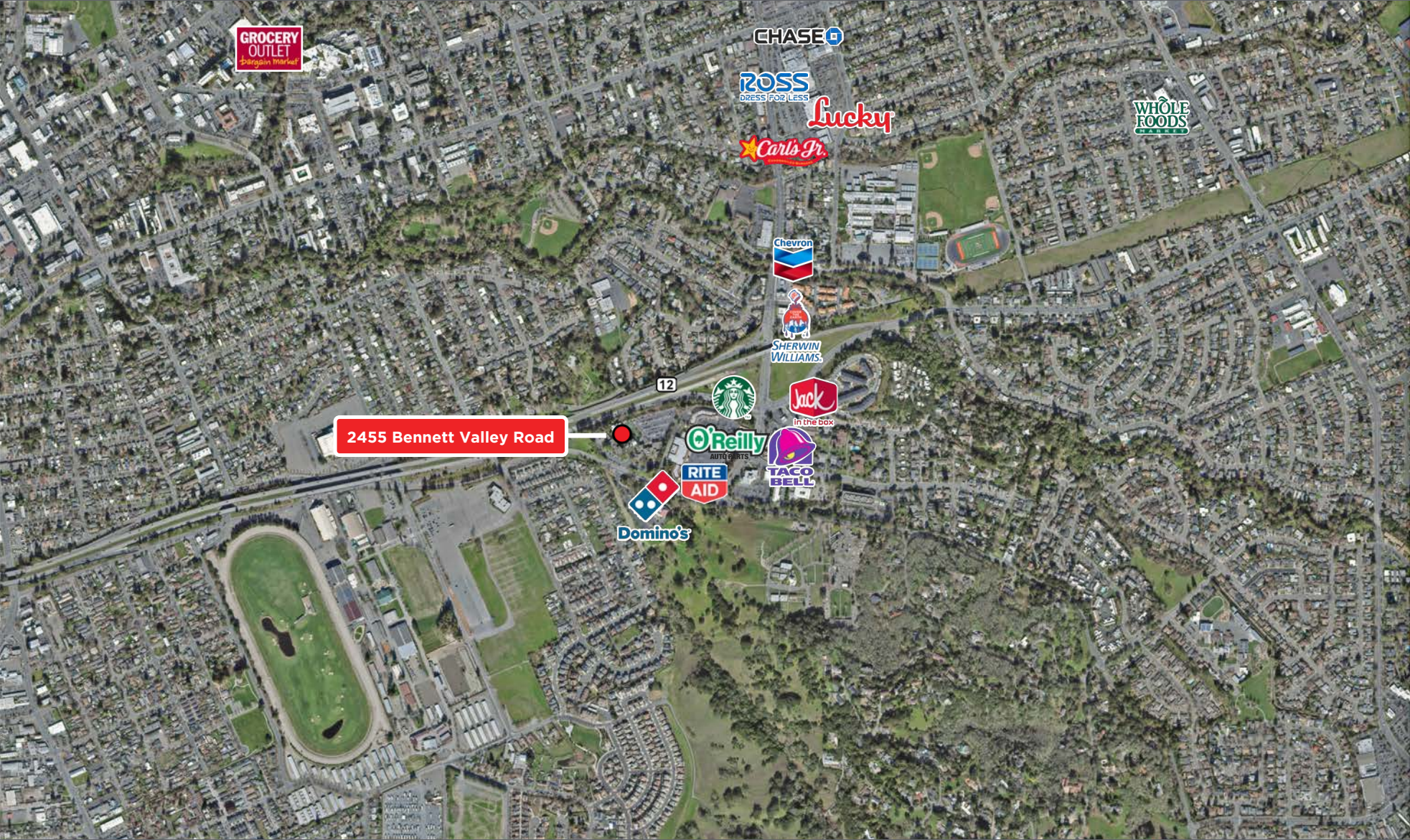
- Suite 214: 2,898+/- sf
- Suite 212A: 701+/- sf

## Building C, 2nd Floor



# FOR LEASE 2455 Bennett Valley Road, Santa Rosa CA

## Waterfall Towers

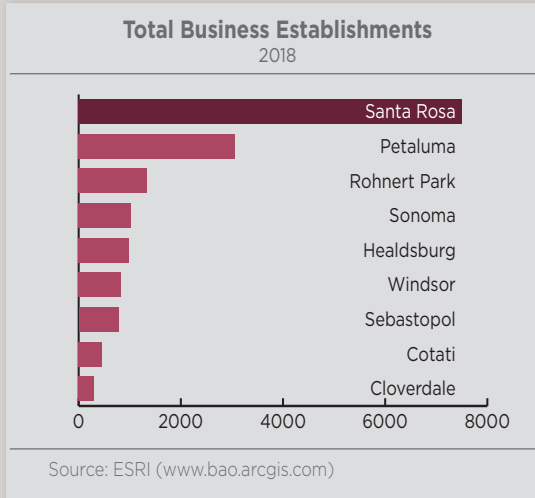


EXCLUSIVELY MARKETING BY:  
**Peter Briceño**  
707.528.1400 ext. 255

**Dave Peterson**  
707.528.1400 ext. 210

# FOR LEASE 2455 Bennett Valley Road, Santa Rosa CA

## Waterfall Towers

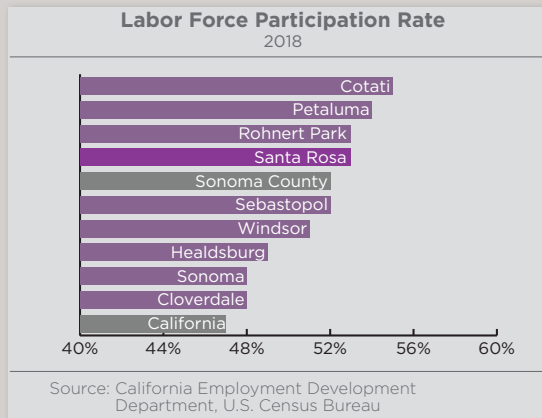


### MARKET OVERVIEW

Santa Rosa is the sixth largest city in the San Francisco Bay Area. The City serves as a business and service hub for California's North Bay Region and serves as the Sonoma County Seat. Sonoma County is located north of the San Francisco Bay. The county's real estate development and business infrastructure is primarily located along Highway 101, which serves as the main arterial connection to Napa, Sacramento, San Francisco. Sonoma County is 35 miles north of San Francisco, which serves as a main attraction to the area. The North Bay is expected to have 17,000 jobs in the area by 2040.

### LABOR FORCE

Santa Rosa's 53% labor force participation rate remained higher than the county and California.



### COMMUTERS

In 2018, Santa Rosa accommodated 105,159 jobs and 109,520 resident workers, suggesting that 4,359 workers commuted out of Santa Rosa for their work. working-age population.

### BUSINESS

Santa Rosa's total number of businesses ranked highest among Sonoma County cities at 7,502, and the amount of businesses per resident stood at 46 businesses per 1,000 residents.