



PETALUMA

MARINA BUSINESS CENTER

755, 765 & 775 Baywood Drive | Petaluma, CA



VIBRANT OFFICE SPACE ON THE PETALUMA MARINA @ HWY 101



BASIN STREET
PROPERTIES



SUITES FOR LEASE
±398 - ±4,100 SF

PROJECT VIDEO

www.PetalumaMarinaBusinessCenter.com
707 217 7196 | www.JLL.com





VIRTUAL TOUR

BLDG 765 | STE. 239

±4,100 SF



Operable Windows for Optimal Air Quality



www.PetalumaMarinaBusinessCenter.com
707 217 7196 | www.JLL.com



Immediate access & visibility from Highways 101 and 116



Excellent access to rapidly growing, highly-educated local labor pool



Outstanding river, marina and mountain views from most suites



Operable windows allow natural air-flow through your space



10 new EV Charging Stations



Secure electronic key card-key system with 24/7 tenant access



Property management & facility engineer onsite for immediate maintenance needs



Abundant onsite parking - 90 stalls covered beneath onsite solar panel system, which generates 373,110 kW of power annually



Tenant Lounge with free Wi-Fi



QUALITY LIFESTYLE AMENITIES AT YOUR DOORSTEP

Benefits enjoyed by tenants at Petaluma Marina Business Center include immediate dock access to the Petaluma River - boat, kayak or take a quick SUP ride on your lunch break! Running and biking trails are accessible from the property to Schollenberg Park, a 165-acre wetland park nearby. The Sheraton Hotel & Conference Center is located directly adjacent to the property.

Downtown Petaluma's Theatre District is located just 1.5 miles away from Petaluma Marina Business Center, offering a lively farm-to-table riverfront dining and shopping scene. Brew-pubs, wine-tasting, art galleries, live music and seasonal farmer's markets make Petaluma a top choice for North Bay employees to live and work. Less than an hour's drive from San Francisco, East Bay and the rugged California coastline, Petaluma continues to attract a quickly growing, well-educated labor pool, seeking the exceptional quality of life the local area affords.



KAYAK, BOATING & PADDLE BOARDING

Situated directly on the river, the Petaluma Marina Business Center boasts immediate access to the water - right outside your office door.

Launch your own kayak or paddle board off of the dock, rent one from local vendors, or take your boat to lunch downtown!



BIKE & HIKING TRAILS

Petaluma Marina Business Center is located steps from Shollenberger Park, a 165-acre wetland park.

Popular for hiking, biking and bird-watching, the park features a two-mile circular trail and a one-mile cutoff trail across an iron bridge, spanning Adobe Creek and running through Alman Marsh to the Petaluma Marina.



JLL





PETALUMA MARINA BUSINESS CENTER



LOCAL AMENITIES

DOWNTOWN PETALUMA
(1.5 MILES)

Petaluma Marina Business Center

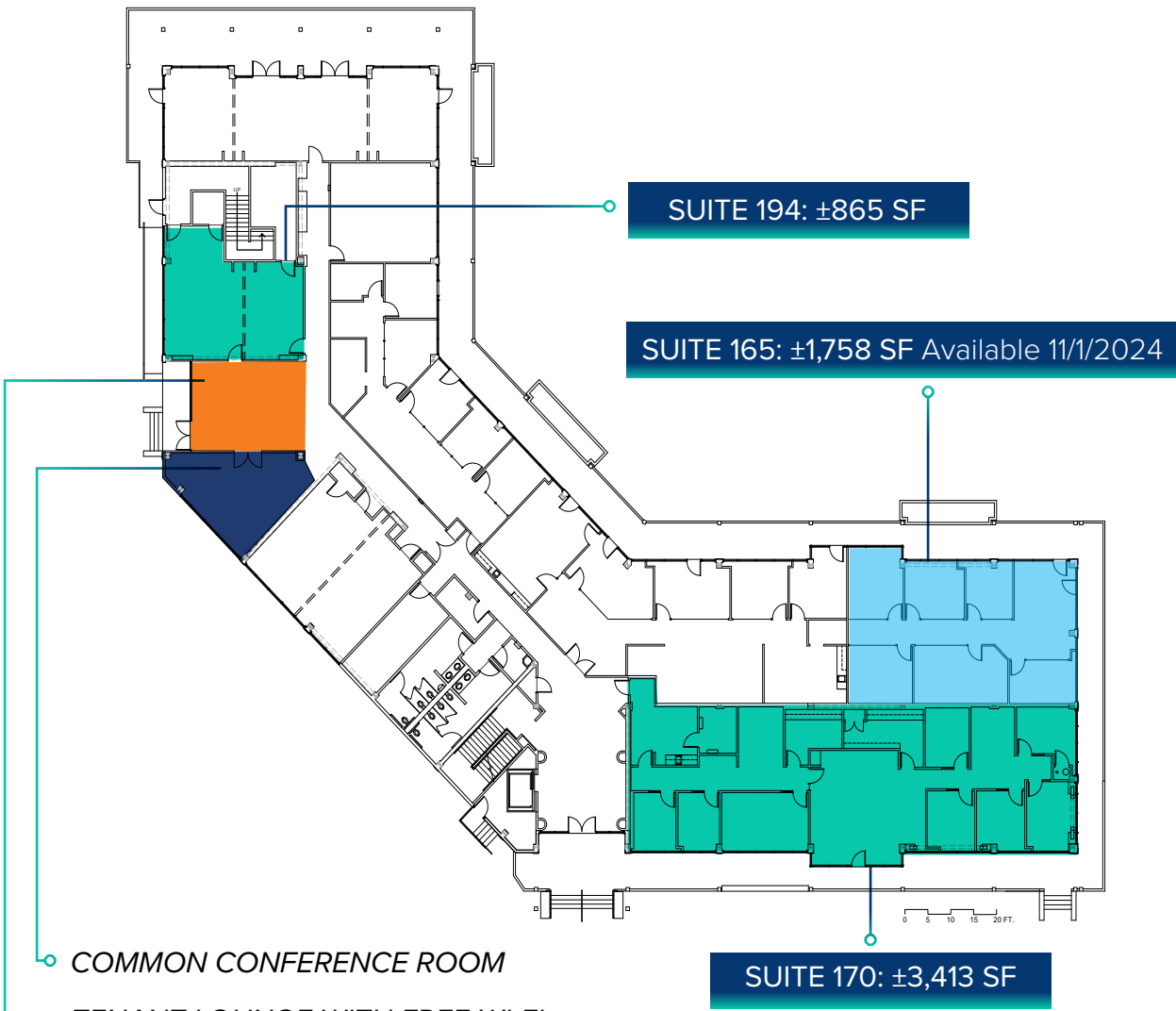
	Retail-12
	Fitness-12
	Restaurants-14
	Entertainment-7

ON-SITE AMENITIES INCLUDE:

- Marina Bean Coffee Shop
- Petaluma Floral Flower Shop
- Phase 3 Hair Salon
- Tenant lounge with free wi-fi
- Common conference room

755 BAYWOOD DRIVE

FIRST FLOOR



*Suites 165 & 170 can be combined for a total of ±5,171 SF

LOUNGE



COMMON CONFERENCE ROOM



LOUNGE

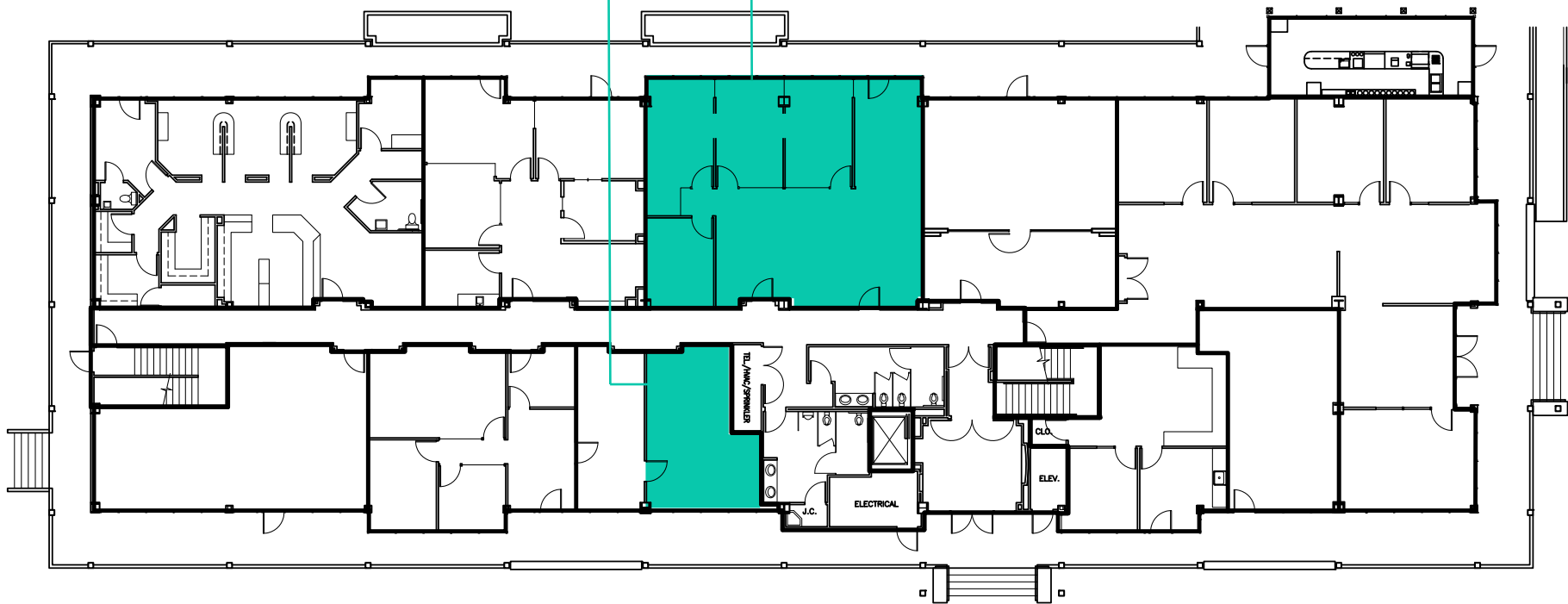


765 BAYWOOD DRIVE

FIRST FLOOR

SUITE 146: ±1,482 SF

SUITE 131: ±398 SF - Available 7/1/2024



765 BAYWOOD DRIVE

SECOND FLOOR

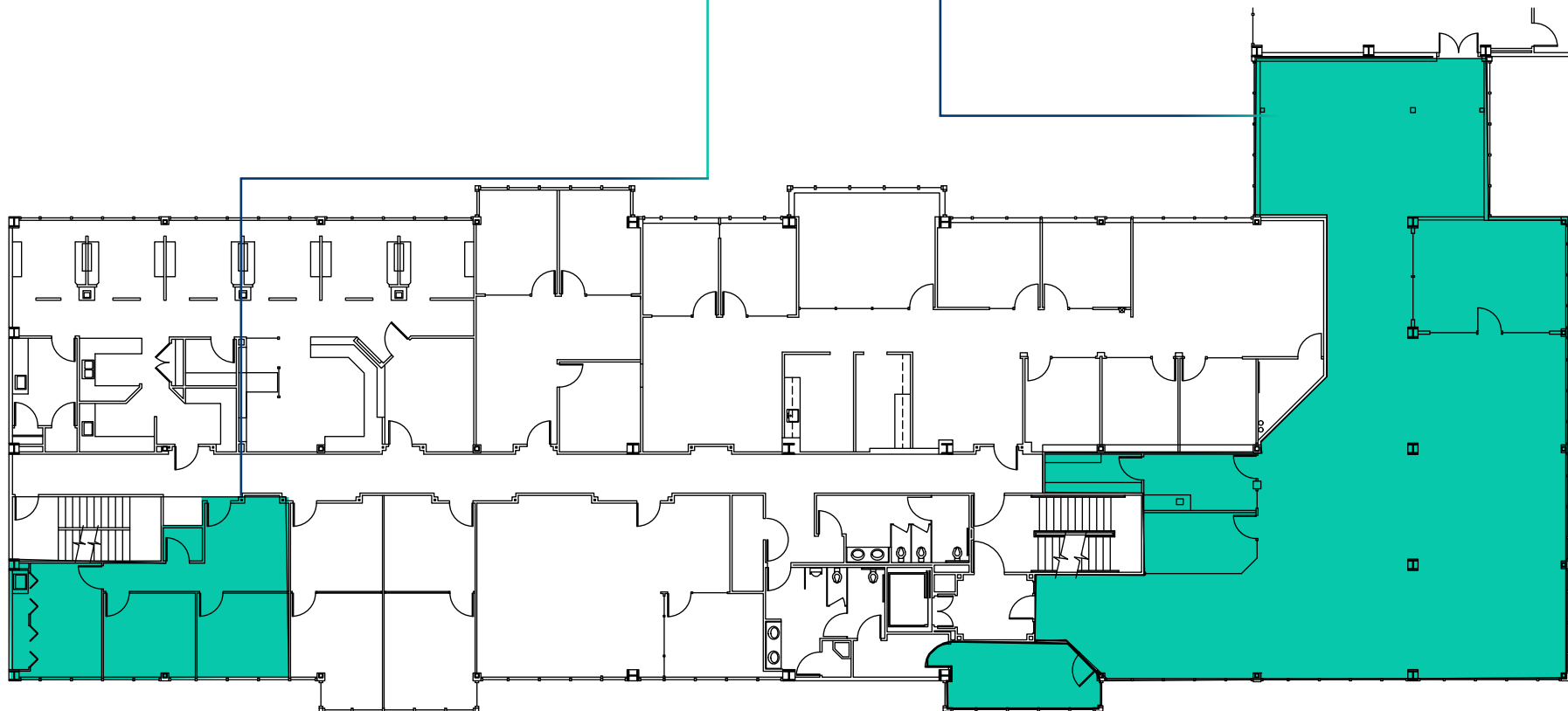


VIRTUAL TOUR

BLDG 765 | STE. 239
±4,100 SF

SUITE 231: ±762 SF

SUITE 239: ±4,100 SF



765 BAYWOOD DRIVE

THIRD FLOOR

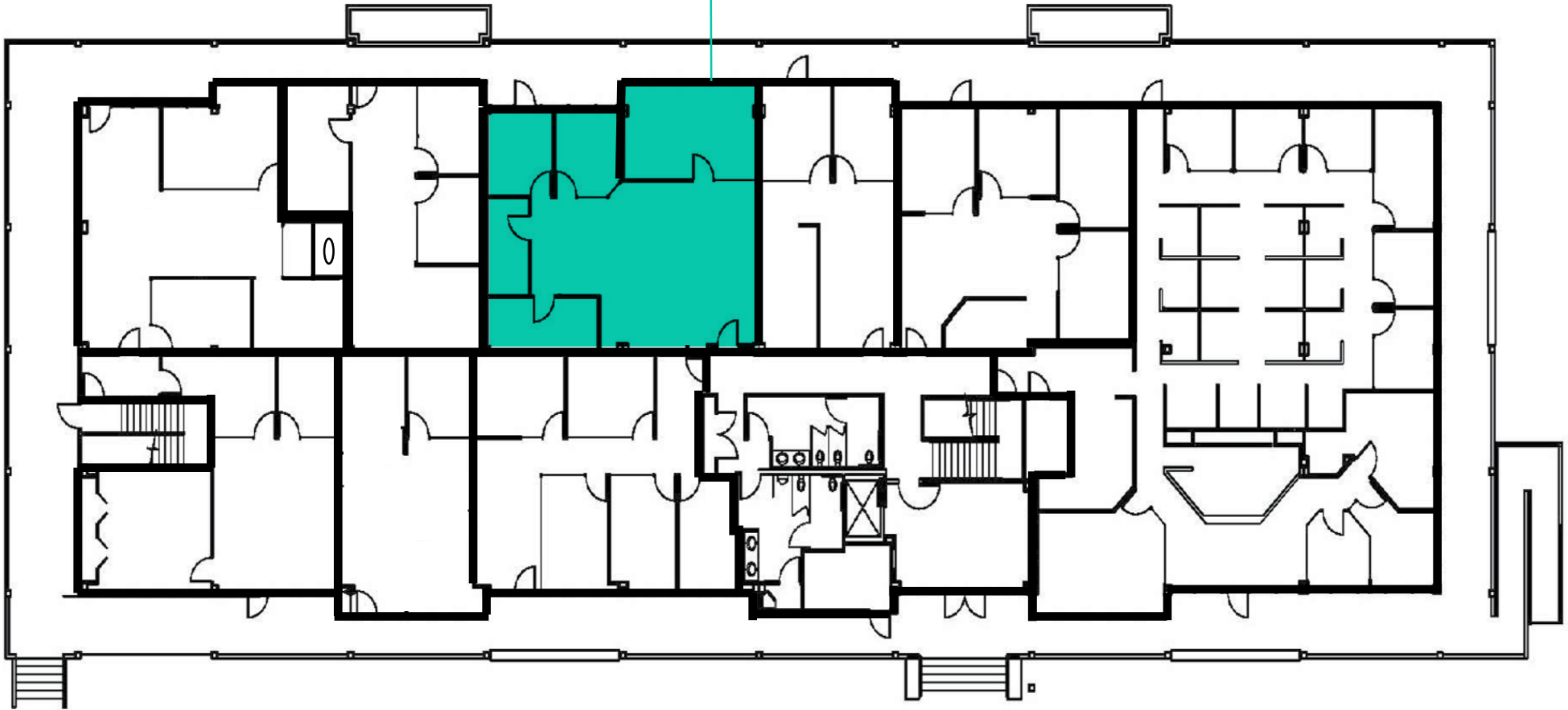
SUITE 335: ±400 SF



775 BAYWOOD DRIVE

FIRST FLOOR

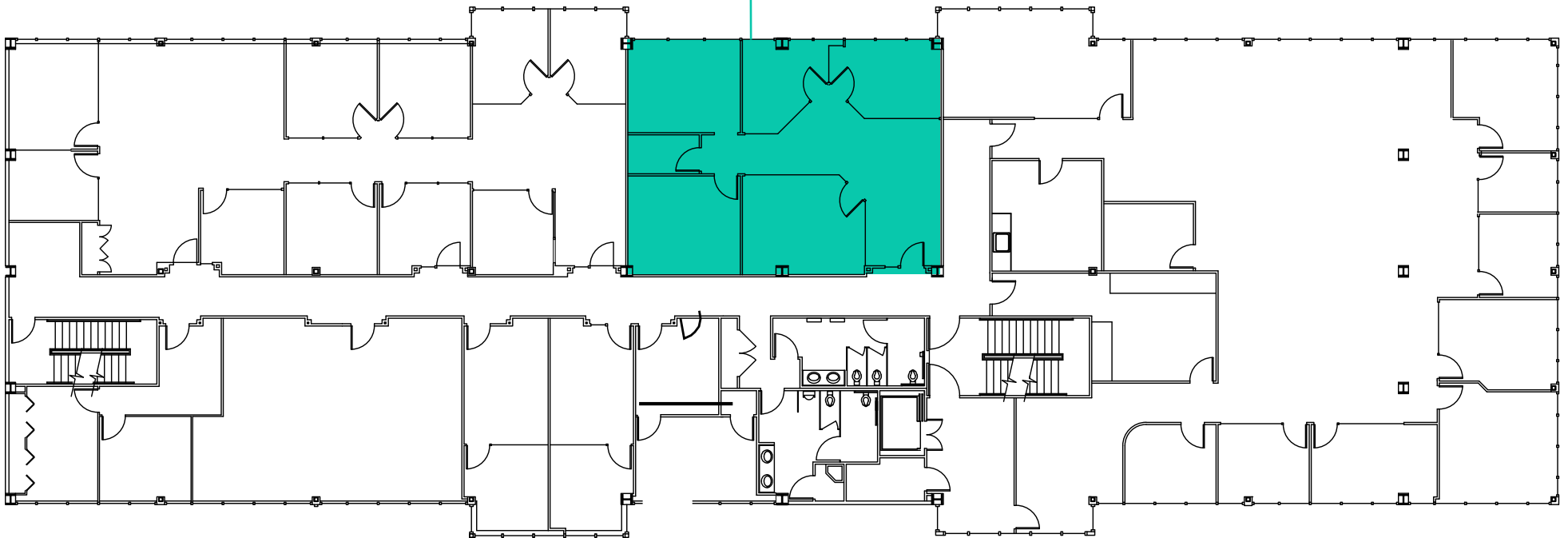
SUITE 111: ±1,502 SF



775 BAYWOOD DRIVE

SECOND FLOOR

SUITE 213: ±1,426 SF - Available 9/1/2024

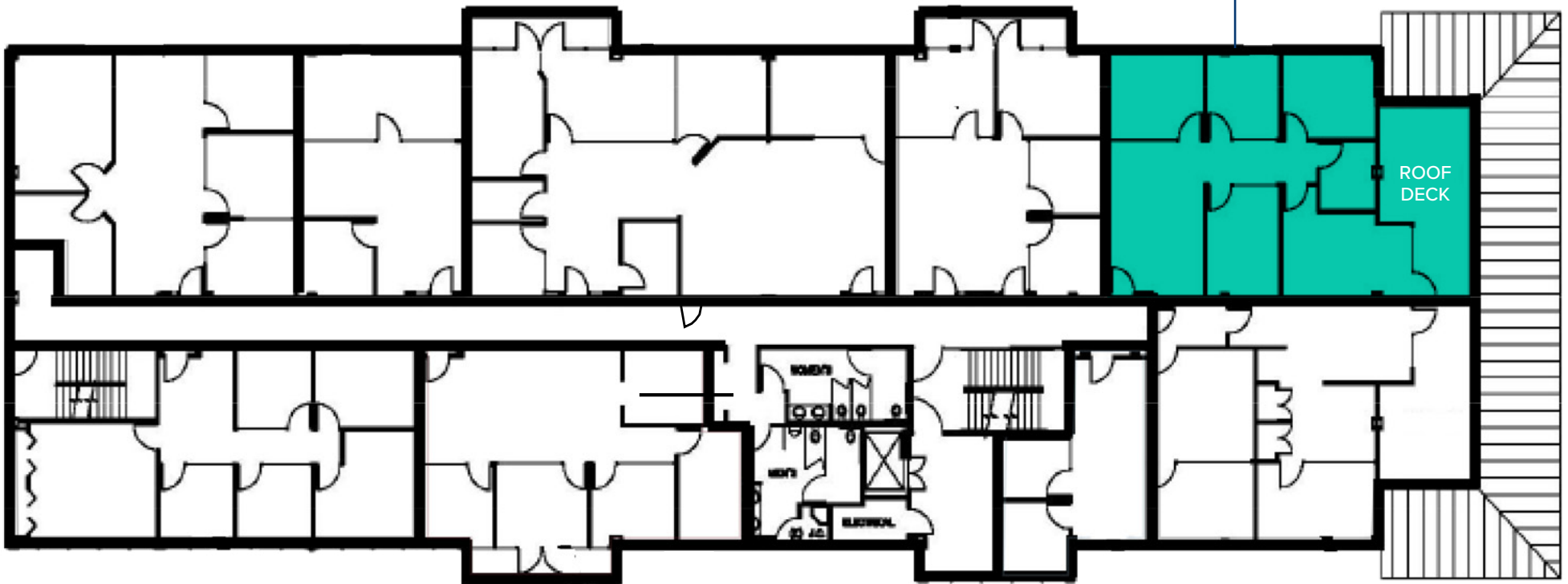


775 BAYWOOD DRIVE

THIRD FLOOR

SUITE 314: ±1,584 SF

- Access to private deck overlooking the water



LEASING TEAM JLL

PROJECT VIDEO

TO SCHEDULE A TOUR OR FOR MORE INFORMATION, PLEASE CONTACT:

TONY SARNO
+1 707 217 7196
tony.sarno@jll.com
RE License# 01430933

LAURA DUFFY
+1 415 686 0255
laura.duffy@jll.com
RE License# 01922792

JORDAN LAZOR
+1 415 595 5102
jordan.lazor@jll.com
RE License# 02011117

Jones Lang LaSalle Brokerage, Inc. License #01856260. Although information has been obtained from sources deemed reliable, neither Owner nor JLL makes any guarantees, warranties or representations, express or implied, as to the completeness or accuracy as to the information contained herein. Any projections, opinions, assumptions or estimates used are for example only. There may be differences between projected and actual results, and those differences may be material. The Property may be withdrawn without notice. Neither Owner nor JLL accepts any liability for any loss or damage suffered by any party resulting from reliance on this information. If the recipient of this information has signed a confidentiality agreement regarding this matter, this information is subject to the terms of that agreement. ©2024 Jones Lang LaSalle IP, Inc. All rights reserved.



BASIN STREET
PROPERTIES

Founded in 1974, Basin Street Properties has truly come a long way. The company has grown from the small entrepreneurial firm of the early years to owning and managing over five million square feet of commercial real estate across two states. As a privately held company, Basin Street remains unique in the industry relative to the speed and ease that decisions – and deals – can be made.

Basin Street's investment in Petaluma is clearly their principal legacy; it has changed the fabric of that town forever. The company has demonstrated a profound understanding of how real estate can change a community, and strives to shape that impact with every development or investment in their current markets of Petaluma, Santa Rosa, Sacramento and Reno. Today, Basin Street has the right team in place to successfully navigate rapid growth.

www.Basin-Street.com