

FOR LEASE

3333 Mendocino Avenue



FOR LEASE

3333 Mendocino Avenue



Class A Offices Next to Medical Campus and Easy Freeway Access

Type:
Office

Address:
**3333 Mendocino Avenue
Santa Rosa, CA**

Total SF
38,308

of Floors
Two 2 Stories

HIGHLIGHTS

- Distinctive Class A Office Opportunity
- Prominent corner on busy intersection
- Quick and easy access to Highway 101
- Architecturally distinctive two story office building
- Monument signage available
- Free on-site parking conveniently surrounds the building
- Well maintained property with responsive local management
- Positioned at the gateway to Fountaingrove
- Elevator served
- Garden atrium

AMENITIES

- Minutes from restaurants, executive housing, hotel /conference facilities and championship golf courses
- Numerous food and retail opportunities along major retail corridor
- Close proximity to modern medical facility
- Walking distance to county facilities and new courthouse building

CRAIG SHAFER, REGIONAL MANAGER PM DESIGN GROUP: “Basin Street is top notch. Organized, quick, efficient and accommodating.”



EXCLUSIVELY MARKETED BY:

Dave Peterson
DRE#: 01280039

Brian Keegan
LIC#: 01809537

Shawn Johnson
LIC#: 00835502

FOR LEASE

3333 Mendocino Avenue



EXCLUSIVELY MARKETING BY:
Dave Peterson
707.528.1400 ext. 210

Brian Keegan
707.528.1400 ext. 249

Shawn Johnson
707.528.1400 ext. 238

FOR LEASE

3333 Mendocino Avenue



EXCLUSIVELY MARKETING BY:

Dave Peterson
707.528.1400 ext. 210

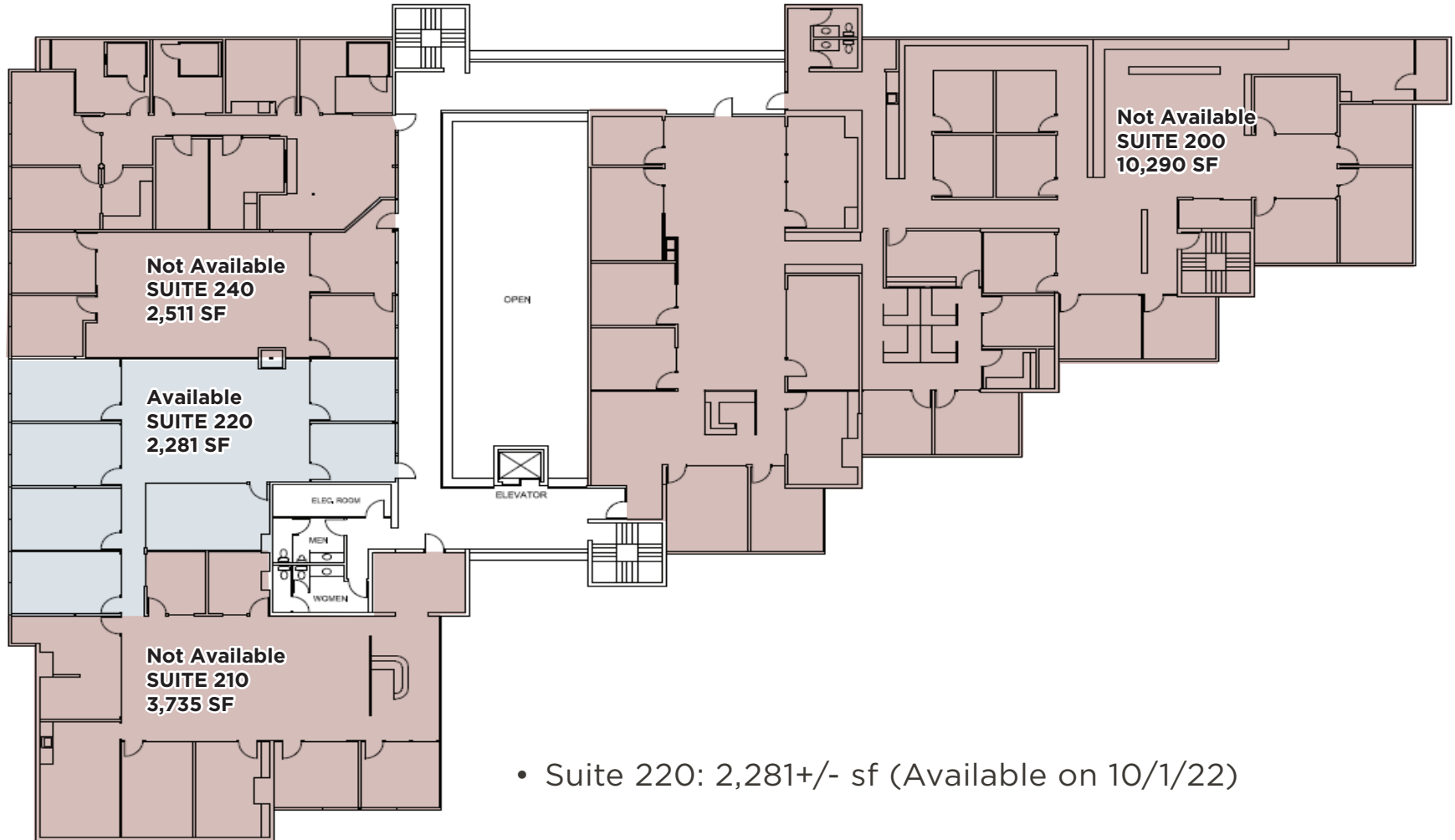
Brian Keegan
707.528.1400 ext. 249

Shawn Johnson
707.528.1400 ext. 238

FOR LEASE

3333 Mendocino Avenue

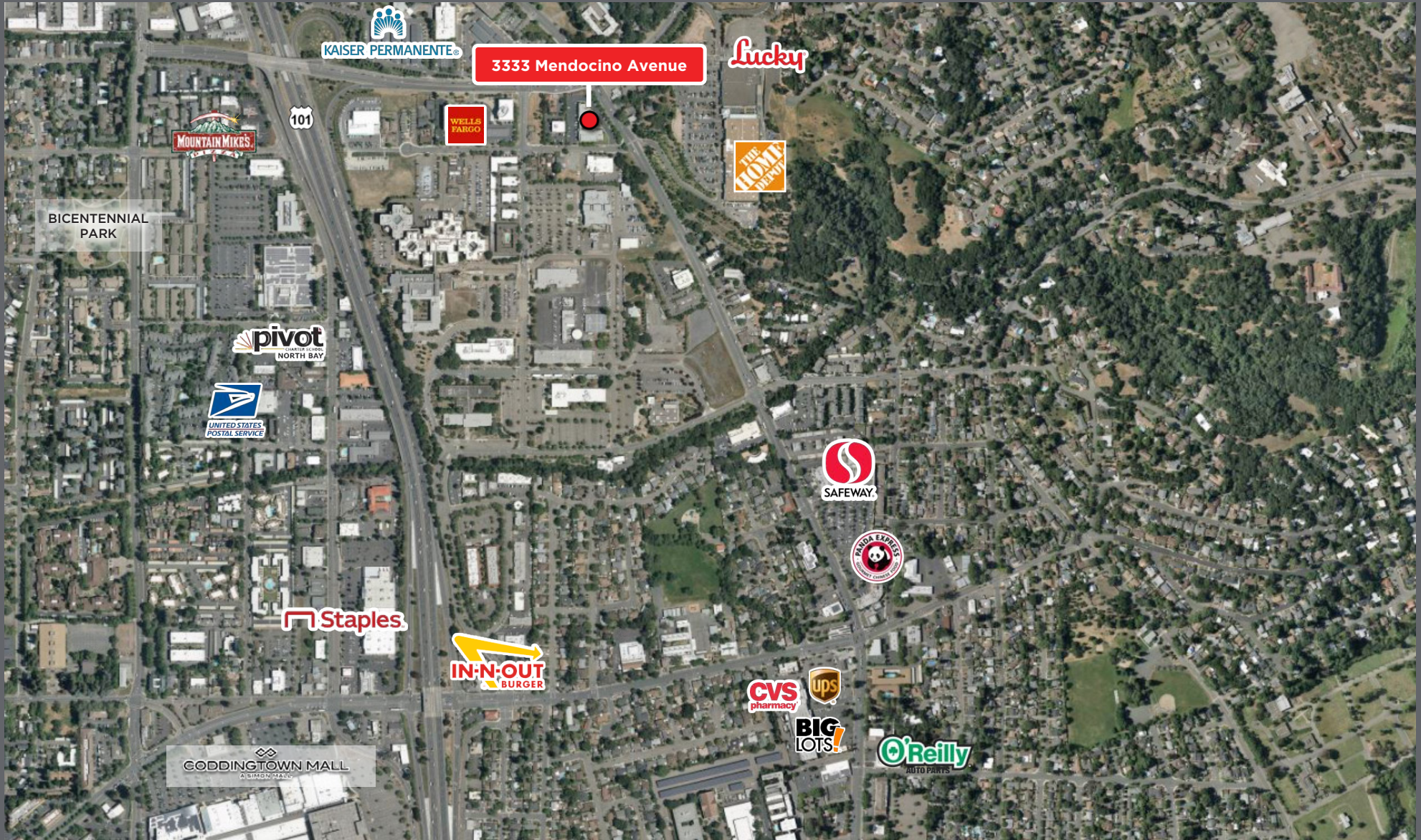
2nd Floor



- Suite 220: 2,281+/- sf (Available on 10/1/22)

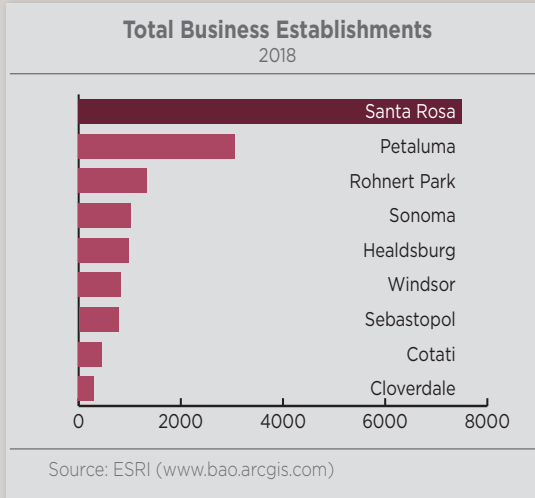
FOR LEASE

3333 Mendocino Avenue



FOR LEASE

3333 Mendocino Avenue

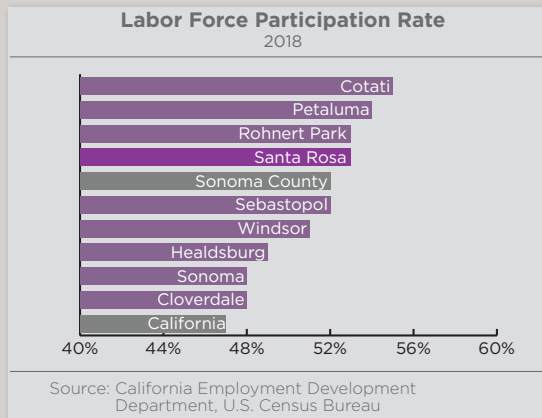


MARKET OVERVIEW

Santa Rosa is the sixth largest city in the San Francisco Bay Area. The City serves as a business and service hub for California's North Bay Region and serves as the Sonoma County Seat. Sonoma County is located north of the San Francisco Bay. The county's real estate development and business infrastructure is primarily located along Highway 101, which serves as the main arterial connection to Napa, Sacramento, San Francisco. Sonoma County is 35 miles north of San Francisco, which serves as a main attraction to the area. The North Bay is expected to have 17,000 jobs in the area by 2040.

LABOR FORCE

Santa Rosa's 53% labor force participation rate remained higher than the county and California.



COMMUTERS

In 2018, Santa Rosa accommodated 105,159 jobs and 109,520 resident workers, suggesting that 4,359 workers commuted out of Santa Rosa for their work. working-age population.

BUSINESS

Santa Rosa's total number of businesses ranked highest among Sonoma County cities at 7,502, and the amount of businesses per resident stood at 46 businesses per 1,000 residents.



EXCLUSIVELY MARKETING BY:

Dave Peterson
707.528.1400 ext. 210

Brian Keegan
707.528.1400 ext. 249

Shawn Johnson
707.528.1400 ext. 238