



DOWNTOWN OFFICE FOR LEASE

300 E Second St
Reno, NV 89501

**2,512 SF TO
20,995 SF**

**Class A Office Steps
from the Ballpark**

YOUR NAME HERE



DOMINIC BRUNETTI, CCIM

775.850.3109 **OFFICE**
775.240.1192 **CELL**
dbrunetti@dicksoncg.com
S.58419

SCOTT SHANKS, SIOR

775.850.3102 **OFFICE**
775.846.1019 **CELL**
sshanks@dicksoncg.com
S.66593

PATRICK RIGGS

775.624.3964 **OFFICE**
775.220.4957 **CELL**
priggs@dicksoncg.com
S.180878

"Basin Street provides wonderful office spaces and facilities. We appreciate their excellent communication and ability to answer our demands quickly and efficiently."

- Mike Richardson, Branch Manager Bay Equity Home Loans

YOUR NAME HERE

LOCATION HIGHLIGHTS



Walk Score - **90**
WALKER'S PARADISE

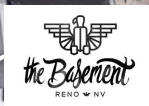
- Premier downtown location, in the center of it all
- Secure, ample covered parking for your employees and clients
- On-site management & facility engineer
- On-site security maintains strict oversight
- Next to the Courtyard by Marriott
- Up to 6 parking spaces per 1,000 square feet
- Take advantage of Opportunity Zone benefits
- New onsite fitness center
- 15th floor executive conference room with striking views for use of all tenants
- Darkshot Coffee Shop on the ground floor is NOW OPEN



DOWNTOWN AREA MAP



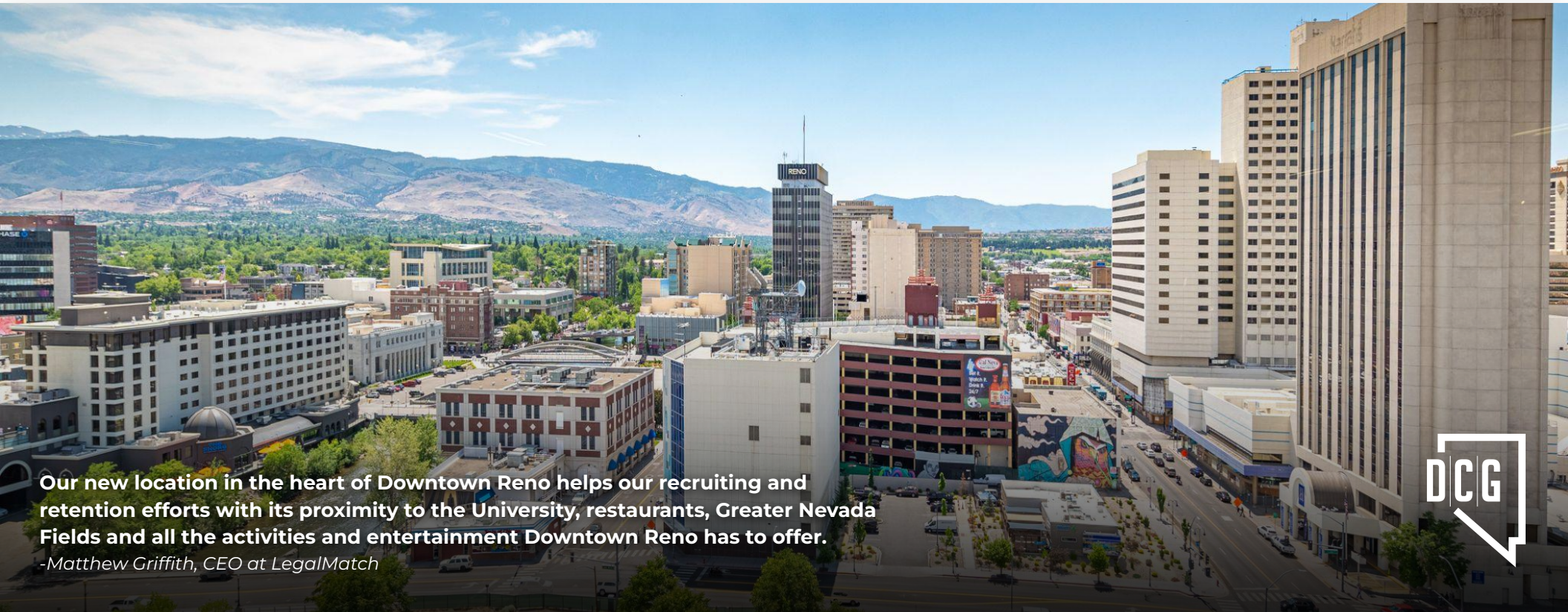
- Reno Aces Ballpark
- Starbucks
- Smith and River
- Pine State Biscuits
- Sizzle Pie
- Patagonia
- La Famiglia
- Pioneer Center for Performing Arts
- National Automobile Museum
- The Basement
- Renaissance Reno
- Downtown Hotel by Marriott
- Old Granite Street Eatery
- Nevada Museum of Art
- The Depot
- Bertha Miranda's
- Mellow Fellow Gastropub







 **BASIN STREET**
PROPERTIES



Our new location in the heart of Downtown Reno helps our recruiting and retention efforts with its proximity to the University, restaurants, Greater Nevada Fields and all the activities and entertainment Downtown Reno has to offer.

-Matthew Griffith, CEO at LegalMatch



MAJOR DOWNTOWN RENO DEVELOPMENTS

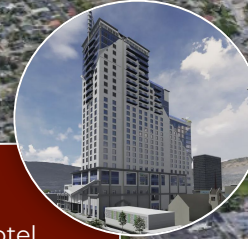
RENO ENTERTAINMENT DISTRICT

1,300 Luxury Apartment Homes ranging from studios to ultra-luxe penthouses, 70,000+ square feet of Retail Space, 170-Key Hotel, and a Two-Acre Park.



KIMPTON HOTEL

Mixed-use 20 story property with 271 hotel rooms and 51 multifamily units.



KEYSTONE COMMONS

Large residential component, composed of 311 -unit multifamily complex. 42,000 square feet of office and retail space.



RIVERFRONT

The project consists of 393 multifamily dwelling units ranging from studios, 1 bedroom and 2 bedroom units. 79 Studios, 211 One-Bed units and 100 Two-Bed units.



BALLPARK PROJECT

The project consists of 369 multifamily dwelling units ranging from studios, 1 bedroom and 2 bedroom units. 117 Studios, 161 One-Bed units and 91 Two-Bed units.



RENO CITY CENTER

Mixed-use complex with 530 apartments, 78,500 square feet of retail (including a potential grocery store). The large plaza in front of Harrah's will be transformed to public green space with open seating.



DOWNTOWN INFILL DEVELOPMENTS

PINE STREET TOWNHOMES

49 lots for attached townhomes, 3 stories units, and includes a two car garage on the ground floor.



CAL AVE STUDIOS

36 studio apartments



RIVERSIDE APARTMENTS

34 unit apartment building. The project will have ground level parking and future retail space.



EDEN TOWERS

A 34-unit, four-story apartment complex project. Includes a parking deck, rooftop bar and chill area, and a retail space on the ground floor.



EL CENTRO

26 dwelling units.
3-Stories



HIGH STREET TOWNHOMES

16 modern spacious units



MOD 2

Five-story mid rise building with 69 units



602 KUENZLI STREET PROJECT

A nine-unit apartment building with a commercial space



CENTER & PINE LOFTS

24 High-end lofts above Pine State Biscuits Breakfast



RIVERBOAT HOTEL APARTMENTS

105 studios & larger studio units, one-bedroom and two-bedroom units.



CANYON FLATS

158 units accommodating up to 508 students.



611 LAKE

Student housing will have 200 units and mix of units for 600+ total beds.

The apartments will be a 13-story apartment complex, including five story parking garage, and 275 units.



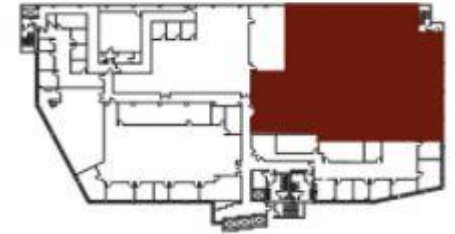
PARK PLACE

Five-story building with 762 beds inside 267 units ranging in size with a common area.



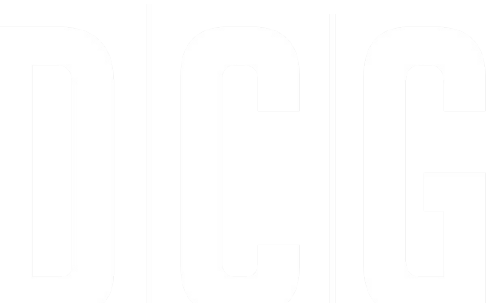
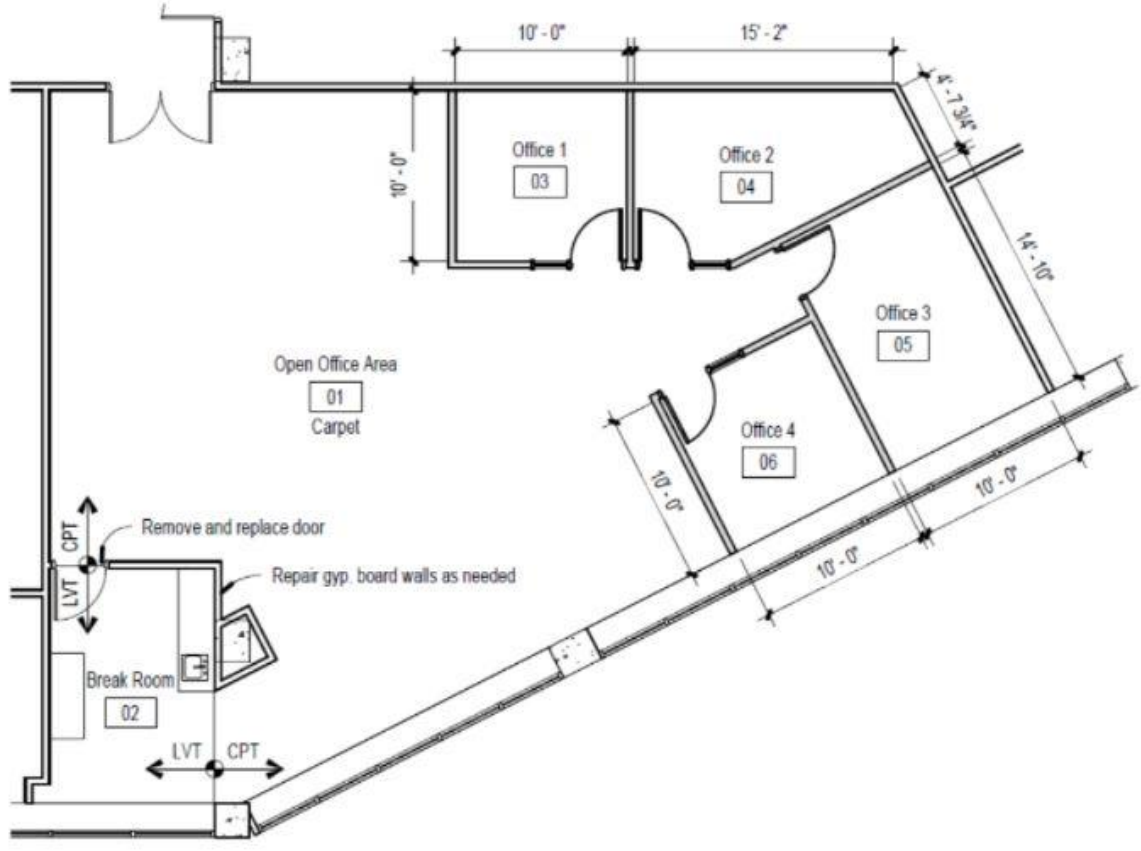
FLOOR PLAN

Suite 1210 | 9,769 sf



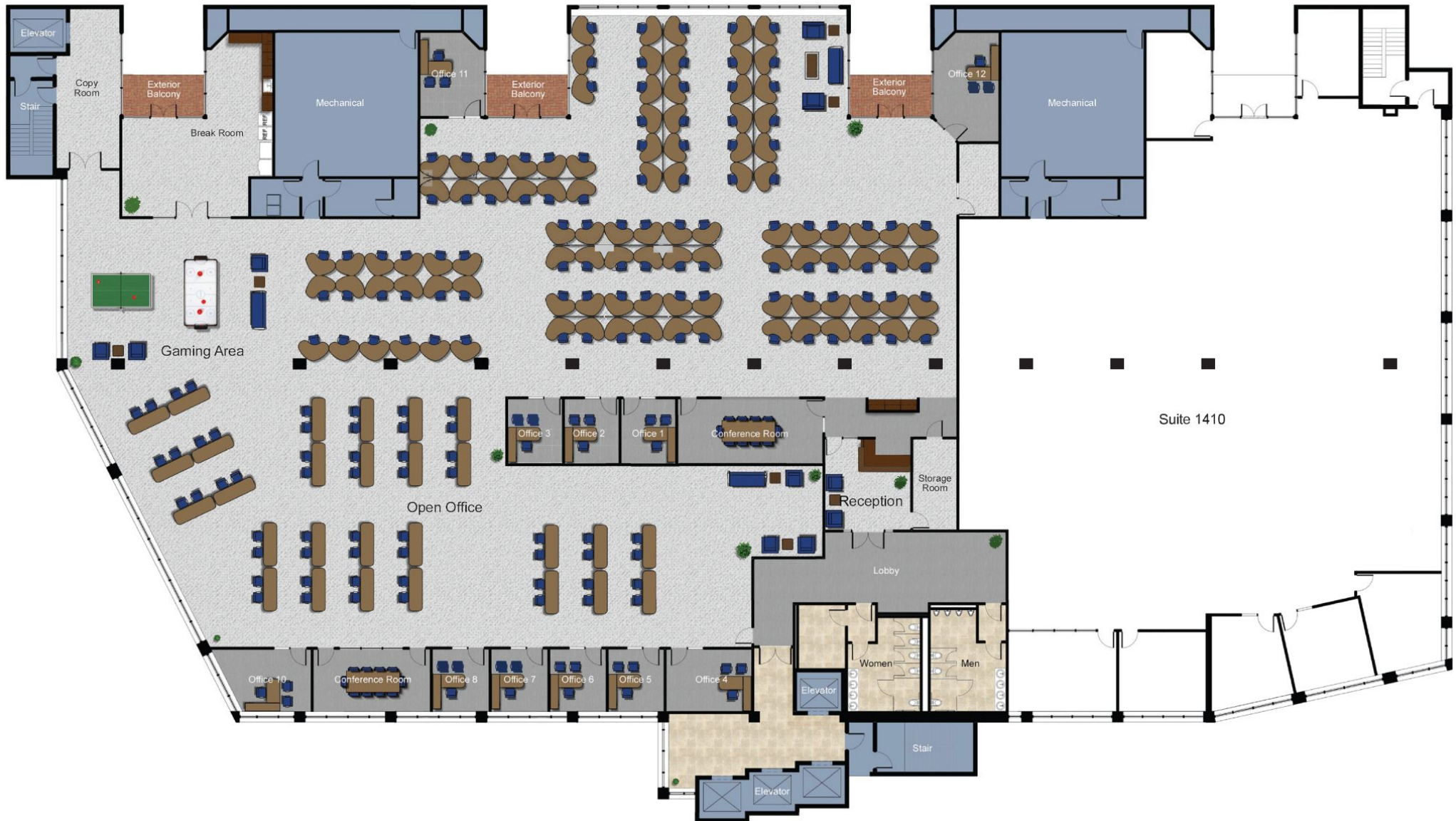
Suite 1210
9,769 RSF

FLOOR PLAN
Suite 1230 | 2,512 sf



1 SUITE OPTION 14TH FLOOR

20,995 SF AVAILABLE



2 SUITE OPTION
14TH FLOOR

SUITE A | 12,980 SF

SUITE B | 8,015 SF

