

FOR LEASE

# Waterfront Office Space



View  
Virtual  
Tour



±2,500 SF Class “A” Office Space Available in Downtown Petaluma



# FOR LEASE **Petaluma** Waterfront Office



Vibrant Office Space in the Theatre District overlooking the Petaluma River

## DESCRIPTION

- Class 'A' building with high-quality finishes throughout
- Premier downtown location, in the center of it all
- Short walking distance to all downtown amenities, restaurants and shopping
- Abundant and convenient parking nearby
- Professional and responsive property management
- Men's and women's shower/lockers
- Petaluma River and mountain views

Type:  
Office

Address:  
201 First Street  
Petaluma, CA

Total SF:  
50,755



EXCLUSIVELY MARKETING BY THE DOWLING-BRACCO TEAM OF JLL | 707.421.2900

**Tony Sarno**  
707.217.7196  
RE License# 01430933

**Jordan Lazor**  
415.595.5102  
RE License# 0201117

**Laura Duffy**  
415.686.0255  
RE License# 01922792

**Glen Dowling**  
707.227.7800  
RE License# 0890450

Jones Lang LaSalle Brokerage, Inc.  
Real Estate License # 01856260



# FOR LEASE Petaluma Waterfront Office



EXCLUSIVELY MARKETING BY THE DOWLING-BRACCO TEAM OF JLL | 707.421.2900

**Tony Sarno**  
707.217.7196  
RE License# 01430933

**Jordan Lazor**  
415.595.5102  
RE License# 0201117

**Laura Duffy**  
415.686.0255  
RE License# 01922792

**Glen Dowling**  
707.227.7800  
RE License# 0890450

## 2,500 RSF

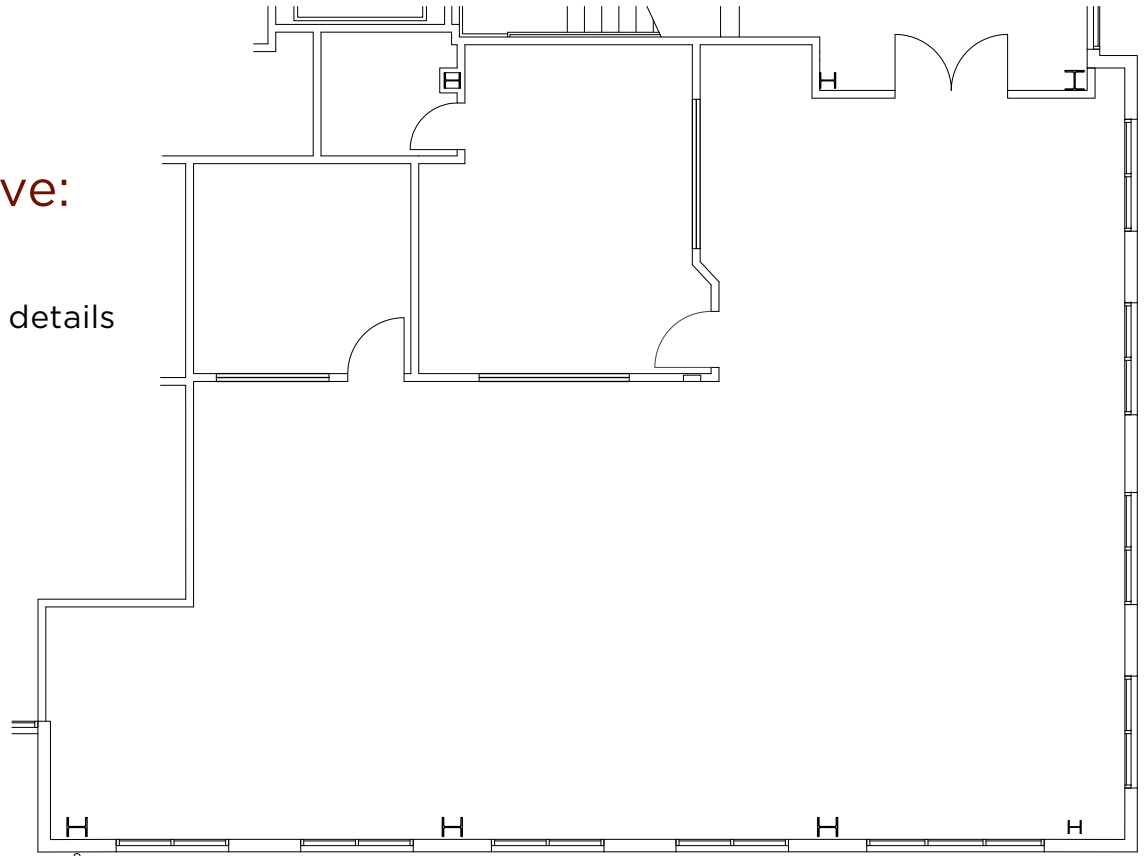
Suite 101

Introducing New Leasing Incentive:  
6 Months Free Rent\*

\*42-month minimum term, contact broker for more details

### Space Highlights

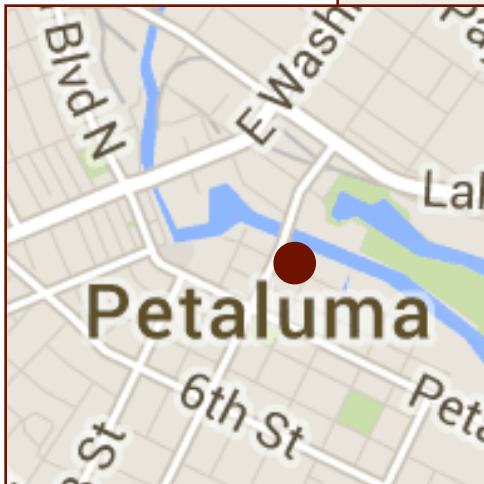
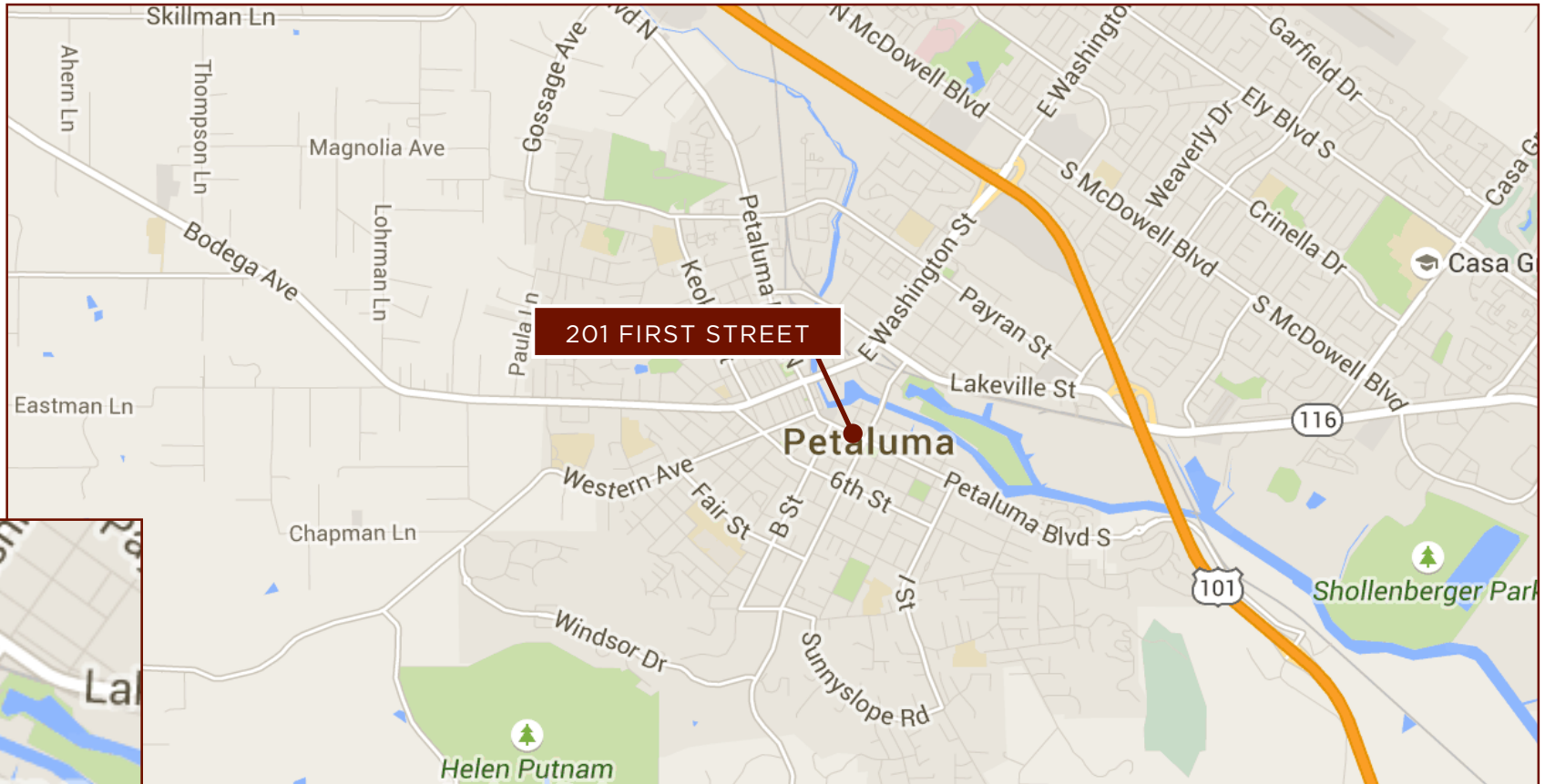
- Modern, creative office space
- Open and exposed ceilings throughout
- Extensive glass-line



View  
Virtual  
Tour

FOR LEASE **Petaluma**

# Waterfront Office Location Map



EXCLUSIVELY MARKETING BY THE DOWLING-BRACCO TEAM OF JLL | 707.421.2900

**Tony Sarno**  
707.217.7196  
RE License# 01430933

**Jordan Lazor**  
415.595.5102  
RE License# 0201117

**Laura Duffy**  
415.686.0255  
RE License# 01922792

**Glen Dowling**  
707.227.7800  
RE License# 0890450

