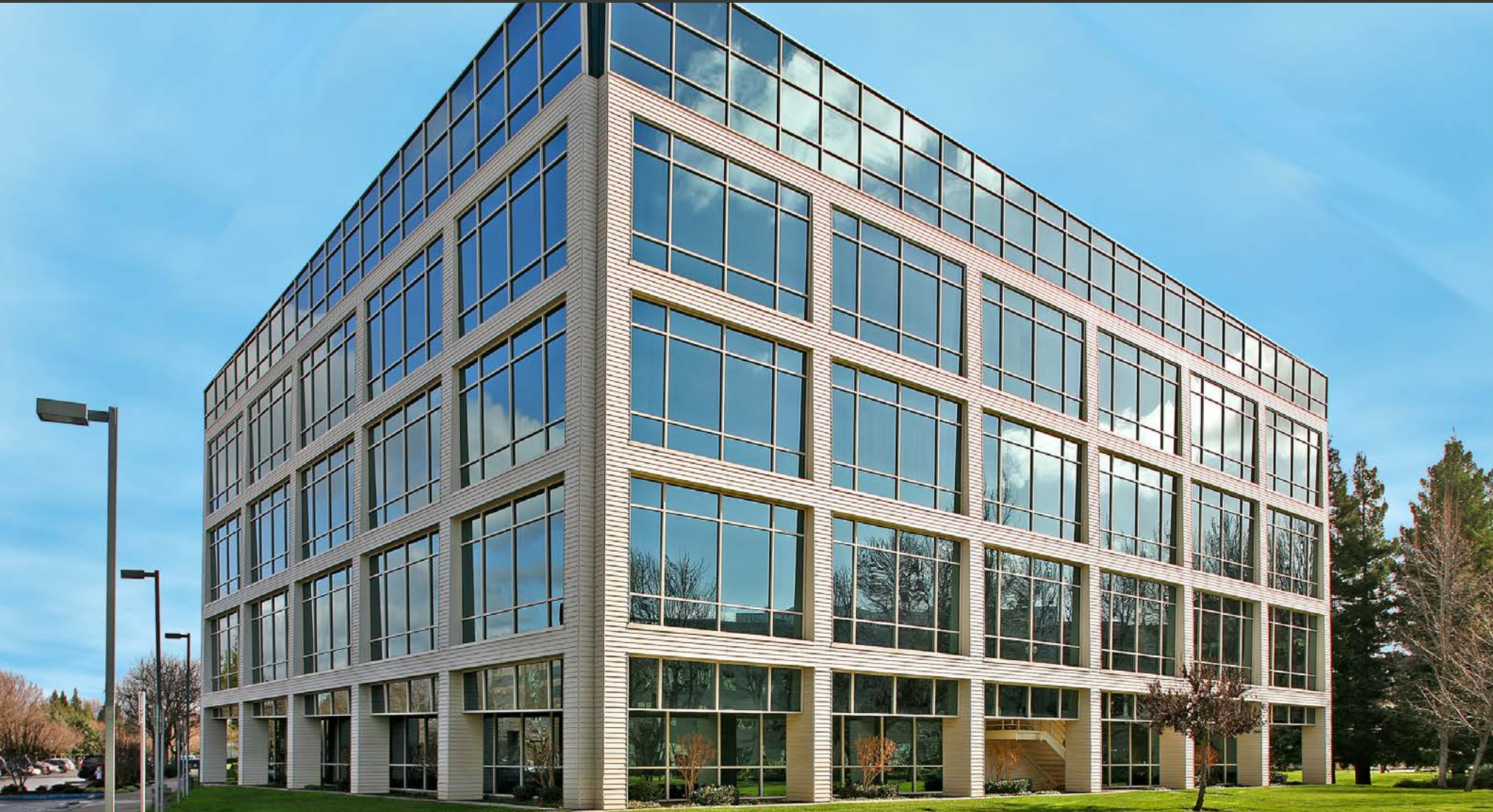


Five State-of-the-Art Office Building

White Rock Corporate Campus

Premier suburban office in the Highway 50 Corridor



NEWMARK

EXCLUSIVELY
MARKETED BY:

Todd Eschelman
916.569.2347
todd.eschelman@nrmk.com
CA RE License #01051148

Kirk Lange
916.569.2331
kirk.lange@nrmk.com
CA RE License #00870331

Jack Blackmon
916.569.2372
jack.blackmon@nrmk.com
CA RE License #01999561


**BASIN STREET
PROPERTIES**

Premier Suburban Office Campus in the Highway 50 Corridor

White Rock Corporate Campus

WhiteRockCampus.com

Five State-of-the-Art Office Buildings



Units from ±2,409 RSF - ±3,899 RSF

- \$2.5 Million in planned capital improvements
- The project totals ±518,000 square feet and offers a balanced tenant mix of local, national and international firms
- Campus setting with ±2.5 acre park lined with benches and walk paths shaded by a redwood grove
- Easy Highway 50 access via Zinfandel Drive and Sunrise Boulevard interchanges
- 15 minutes from downtown Sacramento and 30 minutes from the Sacramento International Airport
- Short walk to bus and light rail stations
- Abundant surface parking, with 4/1,000 parking ratio
- On-site cafe, tenant lounge and fully equipped fitness center
- Responsive on-site management and engineering

“You’ve got a great team here, and it really is a pleasure to work at this excellent and ever-improving site. I’ve been the boss of a few places around the state, and I’ve certainly dealt with my share of landlords over the years, but I’d say that dealing with Basin Street has definitely been my best experience so far.”

- Phil Bonnet, Executive Director
Alta California Regional Center

“Thank you for the communication. I oversee multiple offices and this is, by far, the best communication we have received regarding property protocol. I appreciate it.”

- Nick Cecchetti, Regional Director
Cornerstone Staffing Solutions



Premier Suburban Office Campus in the Highway 50 Corridor

White Rock Corporate Campus



WhiteRockCampus.com

Five-Story Class A Office Building



Building **A**spire
10860 Gold Center Drive



Building **B**uild
10951 White Rock Road



Building **C**reate
10911 White Rock Road



Building **D**esign
10877 White Rock Road



Building **E**xplore
10850 Gold Center Drive

NEWMARK

EXCLUSIVELY
MARKETED BY:

Todd Eschelman
916.569.2347
todd.eschelman@nrmk.com
CA RE License #01051148

Kirk Lange
916.569.2331
kirk.lange@nrmk.com
CA RE License #00870331

Jack Blackmon
916.569.2372
jack.blackmon@nrmk.com
CA RE License #01999561

Premier Suburban Office Campus in the Highway 50 Corridor

White Rock Corporate Campus



WhiteRockCampus.com

Campus Amenities



Tenant Lounge



Fitness Center



Improved Exterior and Interior Common Area Seating



Interior Common Area



**CLICK HERE
FOR COMMON AREA
PHOTO/VIDEO**

NEWMARK

EXCLUSIVELY
MARKETED BY:

Todd Eschelman
916.569.2347
todd.eschelman@nrmk.com
CA RE License #01051148

Kirk Lange
916.569.2331
kirk.lange@nrmk.com
CA RE License #00870331

Jack Blackmon
916.569.2372
jack.blackmon@nrmk.com
CA RE License #01999561

Premier Suburban Office Campus in the Highway 50 Corridor

White Rock Corporate Campus



WhiteRockCampus.com

Campus Amenities



Common Area Seating



New Building Signage



Volleyball Court and Updated Landscaping



White Rock Campus within the route of Amgen Tour 2019

NEWMARK

EXCLUSIVELY
MARKETED BY:

Todd Eschelman
916.569.2347
todd.eschelman@nrmk.com
CA RE License #01051148

Kirk Lange
916.569.2331
kirk.lange@nrmk.com
CA RE License #00870331

Jack Blackmon
916.569.2372
jack.blackmon@nrmk.com
CA RE License #01999561

Premier Suburban Office Campus in the Highway 50 Corridor

White Rock Corporate Campus

WhiteRockCampus.com

Amenities Aerial & Location Map



Premier Suburban Office Campus in the Highway 50 Corridor

White Rock Corporate Campus

WhiteRockCampus.com

Property Location Map & Aerial



NEWMARK

EXCLUSIVELY
MARKETED BY:

Todd Eschelman
916.569.2347
todd.eschelman@nrmk.com
CA RE License #01051148

Kirk Lange
916.569.2331
kirk.lange@nrmk.com
CA RE License #00870331

Jack Blackmon
916.569.2372
jack.blackmon@nrmk.com
CA RE License #01999561

Premier Suburban Office Campus in the Highway 50 Corridor

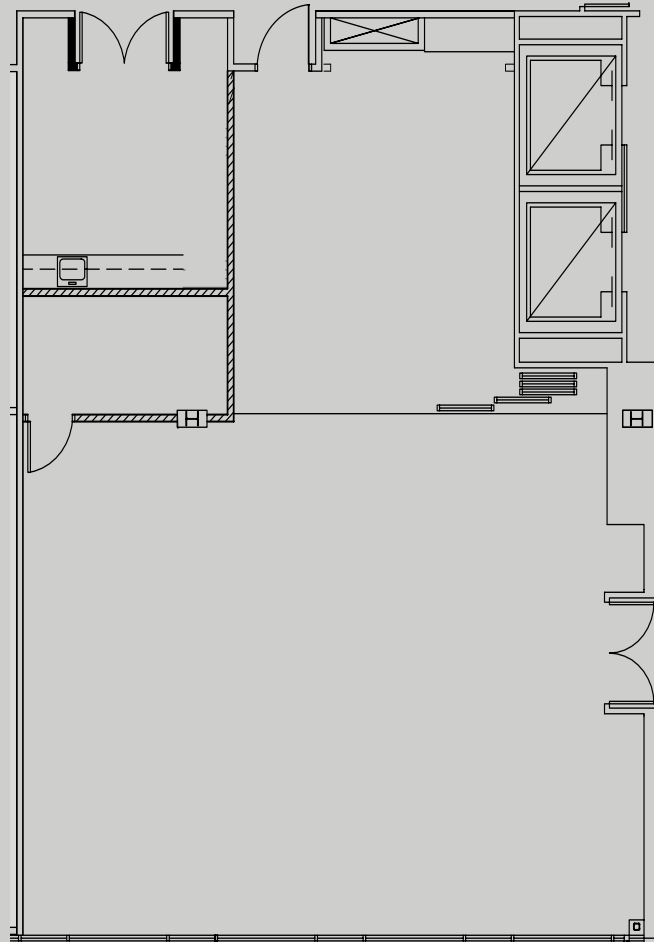
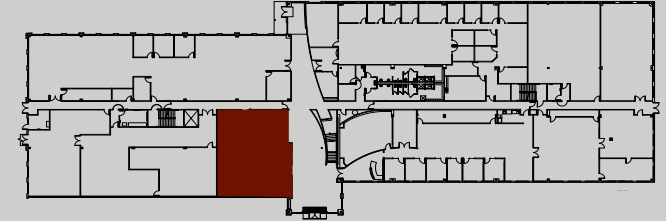
White Rock Corporate Campus



WhiteRockCampus.com

2,409 RSF
SUITE 170

Building **E**xplore
10850 Gold Center Dr
First Floor



NEWMARK

EXCLUSIVELY
MARKETED BY:

Todd Eschelman
916.569.2347
todd.eschelman@nmrk.com
CA RE License #01051148

Kirk Lange
916.569.2331
kirk.lange@nmrk.com
CA RE License #00870331

Jack Blackmon
916.569.2372
jack.blackmon@nmrk.com
CA RE License #01999561

Premier Suburban Office Campus in the Highway 50 Corridor

White Rock Corporate Campus

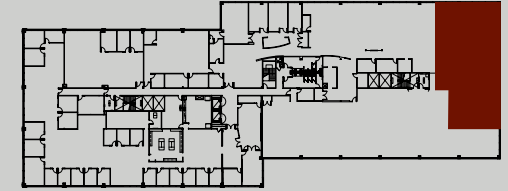
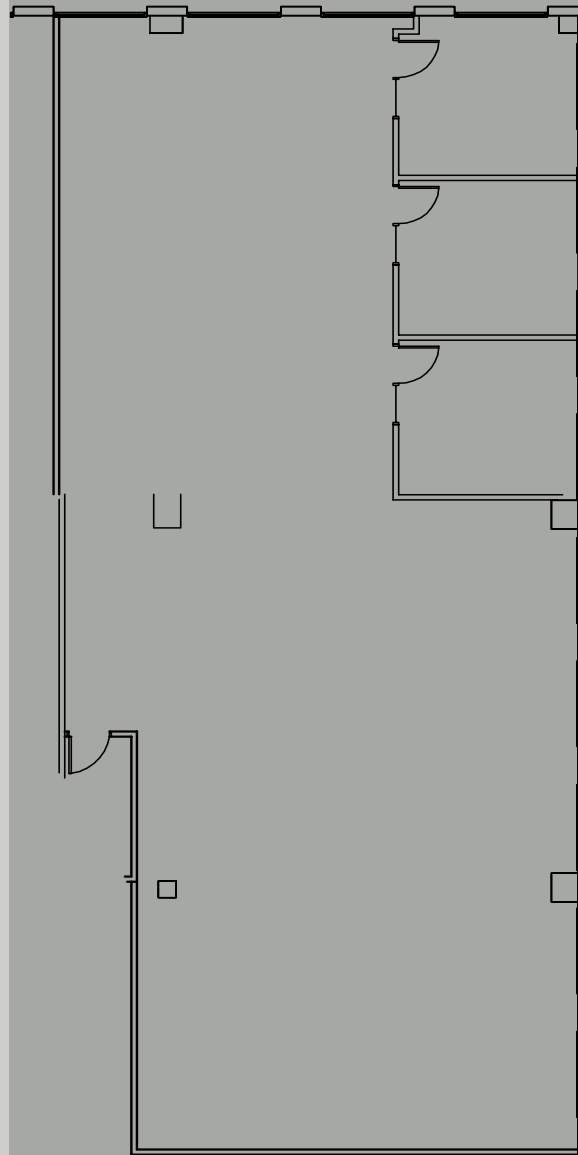


WhiteRockCampus.com

3,899 RSF

SUITE 255

Building **E**xplore
10850 Gold Center Dr
Second Floor



NEWMARK

EXCLUSIVELY
MARKETED BY:

Todd Eschelman
916.569.2347
todd.eschelman@nmrk.com
CA RE License #01051148

Kirk Lange
916.569.2331
kirk.lange@nmrk.com
CA RE License #00870331

Jack Blackmon
916.569.2372
jack.blackmon@nmrk.com
CA RE License #01999561

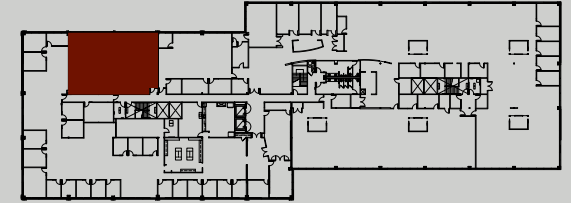
Premier Suburban Office Campus in the Highway 50 Corridor

White Rock Corporate Campus

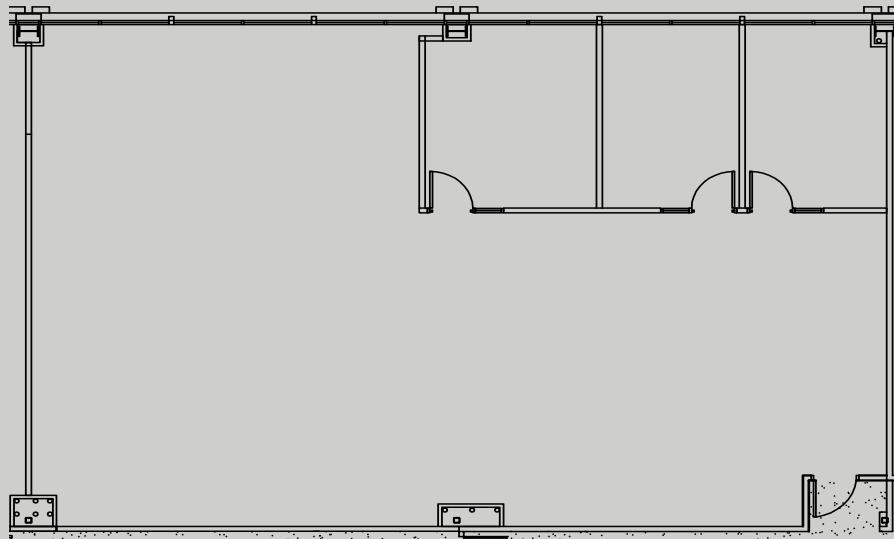


WhiteRockCampus.com

2,721 RSF
SUITE 375



Building **E**xplore
10850 Gold Center Dr
Third Floor



NEWMARK

EXCLUSIVELY
MARKETED BY:

Todd Eschelman
916.569.2347
todd.eschelman@nrmk.com
CA RE License #01051148

Kirk Lange
916.569.2331
kirk.lange@nrmk.com
CA RE License #00870331

Jack Blackmon
916.569.2372
jack.blackmon@nrmk.com
CA RE License #01999561