



# DOWNTOWN OFFICE FOR LEASE

**300 E Second St**  
Reno, NV 89501

**2,512 SF TO  
31,895 SF**

**Class A Office Steps  
from the Ballpark**

YOUR NAME HERE



**DOMINIC BRUNETTI, CCIM**

775.850.3109 OFFICE  
775.240.1192 CELL  
dbrunetti@dicksoncg.com  
S.58419

**SCOTT SHANKS, SIOR**

775.850.3102 OFFICE  
775.846.1019 CELL  
sshanks@dicksoncg.com  
S.66593

**PATRICK RIGGS**

775.624.3964 OFFICE  
775.220.4957 CELL  
priggs@dicksoncg.com  
S.180878

"Basin Street provides wonderful office spaces and facilities. We appreciate their excellent communication and ability to answer our demands quickly and efficiently."  
Mike Richardson, Branch Manager : Bay Equity Home Loans

333 Holcomb Ave., Ste. 300 | Reno, Nevada 89502 | 775.850.3100 | DicksonCG.com



"Basin Street provides wonderful office spaces and facilities. We appreciate their excellent communication and ability to answer our demands quickly and efficiently."

- Mike Richardson, Branch Manager Bay Equity Home Loans

YOUR NAME HERE

## LOCATION HIGHLIGHTS



Walk Score - **90**  
**WALKER'S PARADISE**

- Premier downtown location, in the center of it all
- Secure, ample covered parking for your employees and clients
- On-site management & facility engineer
- On-site security maintains strict oversight
- Next to the Courtyard by Marriott
- Up to 6 parking spaces per 1,000 square feet
- Take advantage of Opportunity Zone benefits
- New onsite fitness center
- 15th floor executive conference room with striking views for use of all tenants
- Darkshot Coffee Shop opening January 2022 on the ground floor

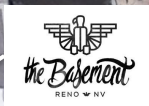
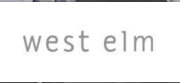




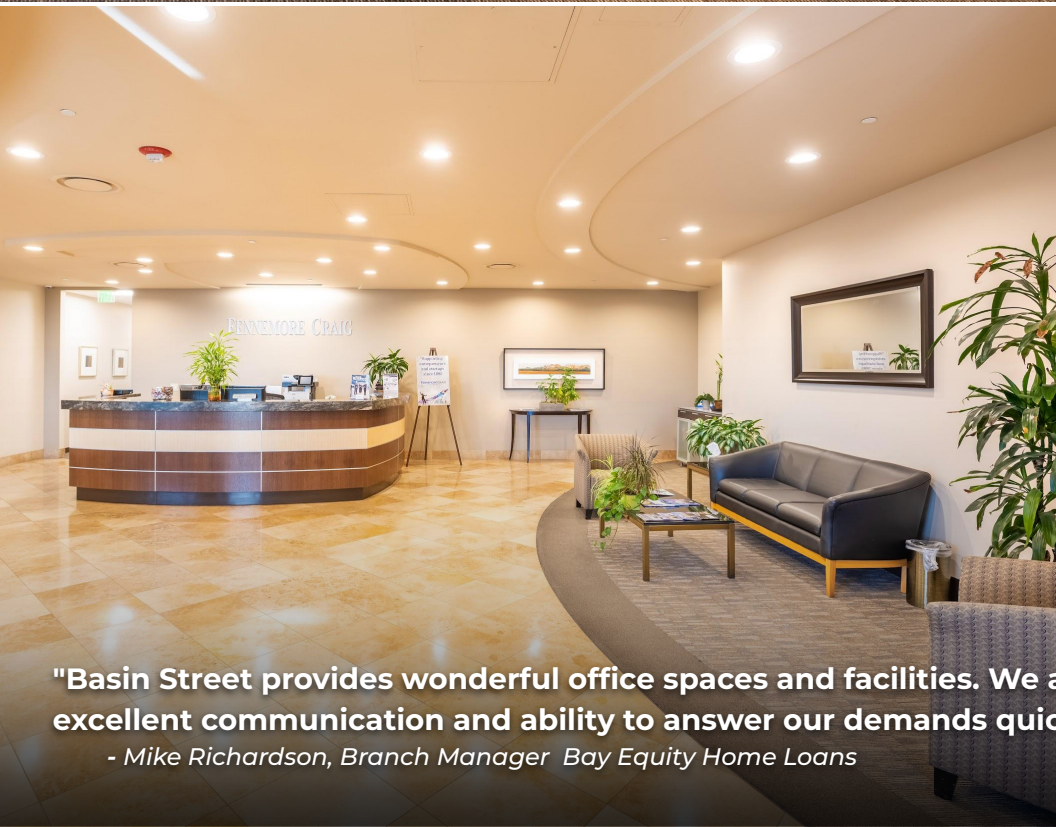
# DOWNTOWN AREA MAP



- Reno Aces Ballpark
- Starbucks
- Campo
- Pine State Biscuits
- Sizzle Pie
- Patagonia
- La Famiglia
- Pioneer Center for Performing Arts
- National Automobile Museum
- West Elm
- The Basement
- Renaissance Reno
- Downtown Hotel by Marriott
- Old Granite Street Eatery
- Nevada Museum of Art
- The Depot
- Bertha Miranda's
- Taste of Chicago
- Mellow Fellow Gastropub







**"Basin Street provides wonderful office spaces and facilities. We appreciate their excellent communication and ability to answer our demands quickly and efficiently."**

*- Mike Richardson, Branch Manager Bay Equity Home Loans*





DCG



BASIN STREET  
PROPERTIES



# MAJOR DOWNTOWN RENO DEVELOPMENTS

## RENO ENTERTAINMENT DISTRICT

1,300 Luxury Apartment Homes ranging from studios to ultra-luxe penthouses, 70,000+ square feet of Retail Space, 170-Key Hotel, and a Two-Acre Park.



## KIMPTON HOTEL

Mixed-use 20 story property with 271 hotel rooms and 51 multifamily units.



## KEYSTONE COMMONS

Large residential component, composed of 311 -unit multifamily complex. 42,000 square feet of office and retail space.



## RIVERFRONT

The project consists of 393 multifamily dwelling units ranging from studios, 1 bedroom and 2 bedroom units. 79 Studios, 211 One-Bed units and 100 Two-Bed units.



## BALLPARK PROJECT

The project consists of 369 multifamily dwelling units ranging from studios, 1 bedroom and 2 bedroom units. 117 Studios, 161 One-Bed units and 91 Two-Bed units.



## RENO CITY CENTER

Mixed-use complex with 530 apartments, 78,500 square feet of retail (including a potential grocery store). The large plaza in front of Harrah's will be transformed to public green space with open seating.





# DOWNTOWN INFILL DEVELOPMENTS

## PINE STREET TOWNHOMES

Proposed to create 49 lots for attached townhomes. Each unit is 3 stories tall and includes a two car garage on the ground floor. There are 3 floor plans proposed.



## RIVERSIDE APARTMENTS

34 unit apartment building, consisting of 1 & 2 bedroom apartments. The project will have ground level parking and future retail space.



## HIGH STREET TOWNHOMES

16 spacious units



## EL CENTRO

26 dwelling units.



## EDEN TOWERS

A 34-unit, four-story apartment complex project. Includes a parking deck, rooftop bar and chill area, and a retail space on the ground floor.



## 611 LAKE

Student housing will have 200 units and mix of two, three and four bedroom units for 600+ total beds.

The apartment portion will be a 13-story apartment complex, including five story parking garage, 275 units, mix of studio, one bedroom and two bedroom units.



## CANYON FLATS

158 units accommodating up to 508 students.



## PARK PLACE

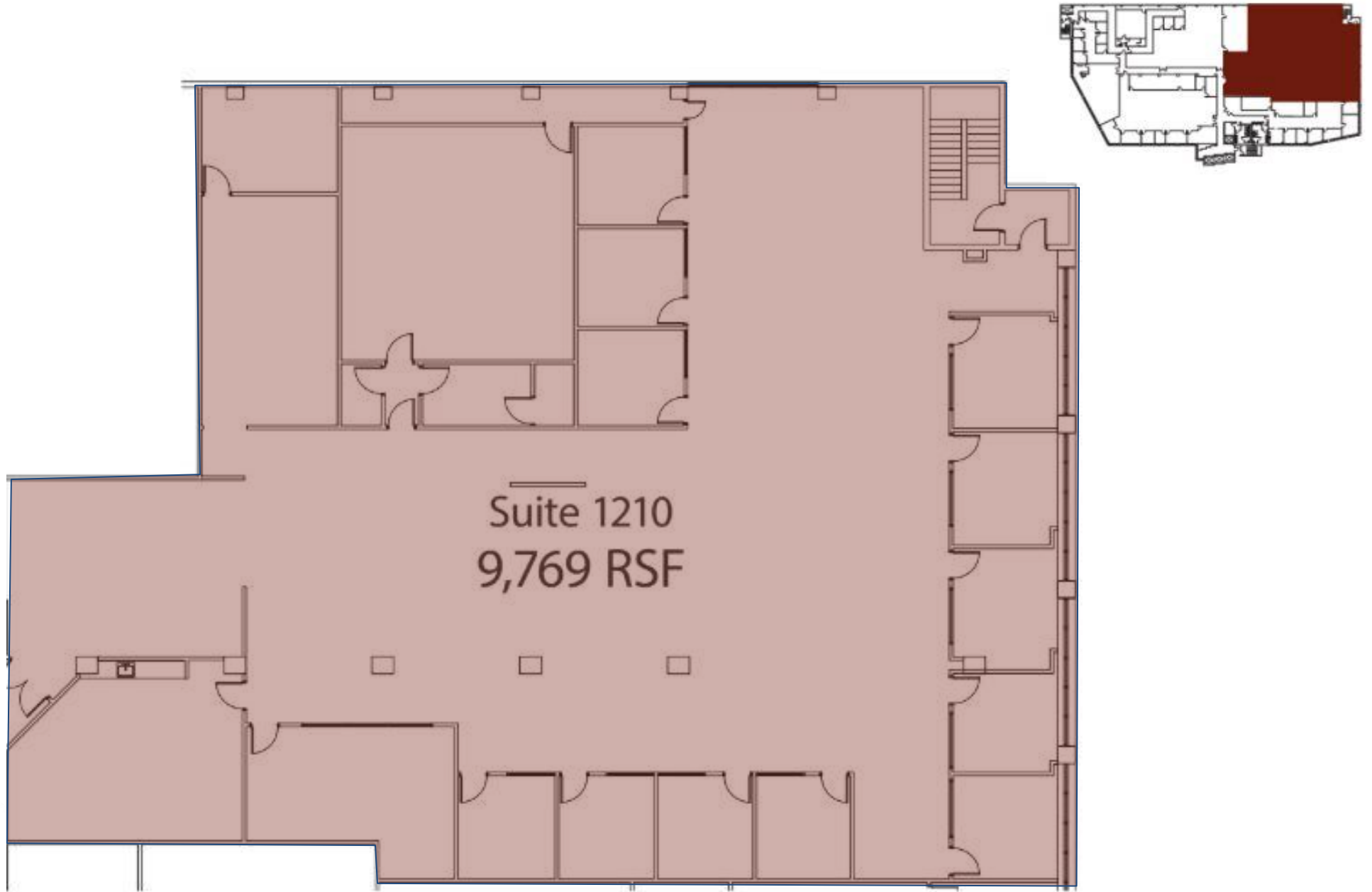
Five-story building with 762 beds inside 267 units ranging from studios to five shared units with a common area.





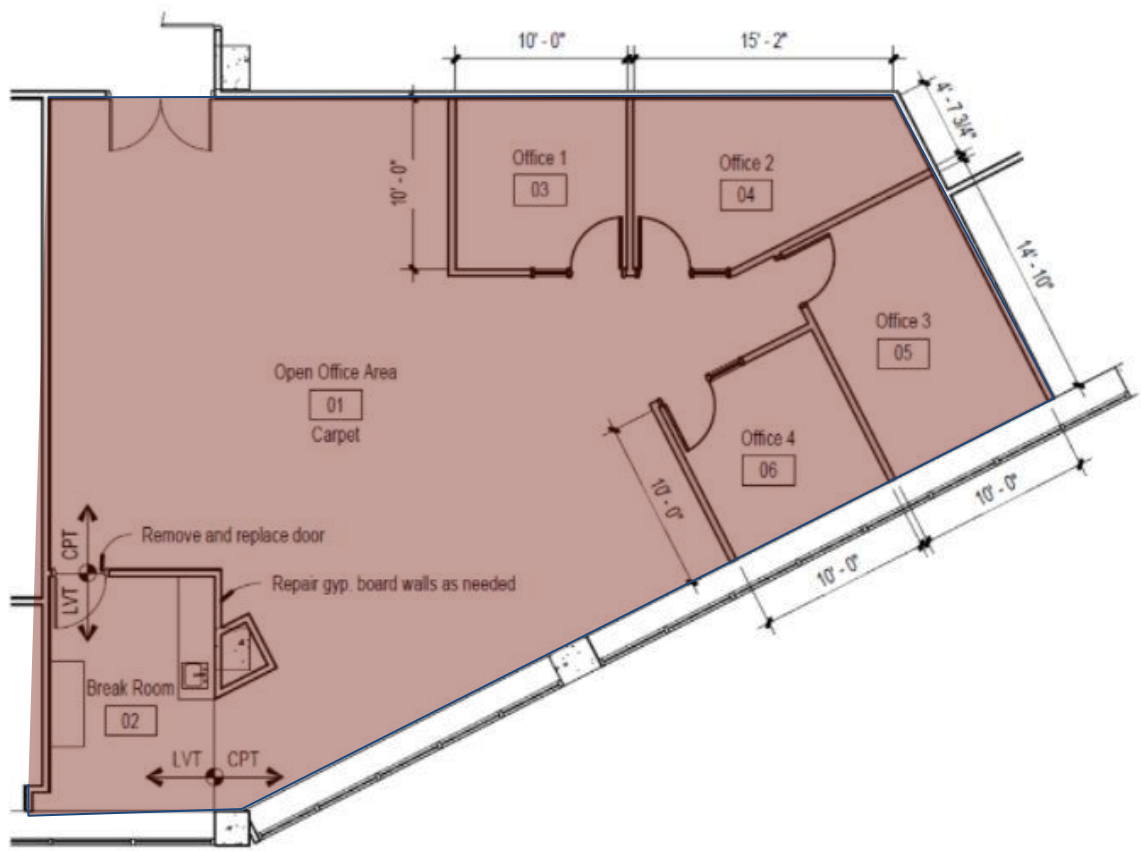
**FLOOR PLAN**

**Suite 1210 | 9,769 sf**





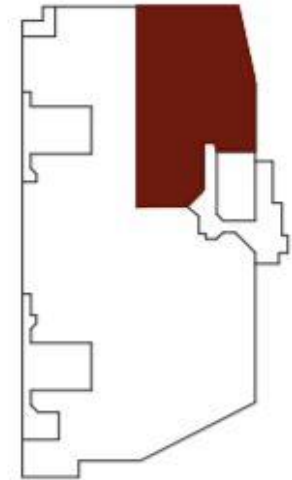
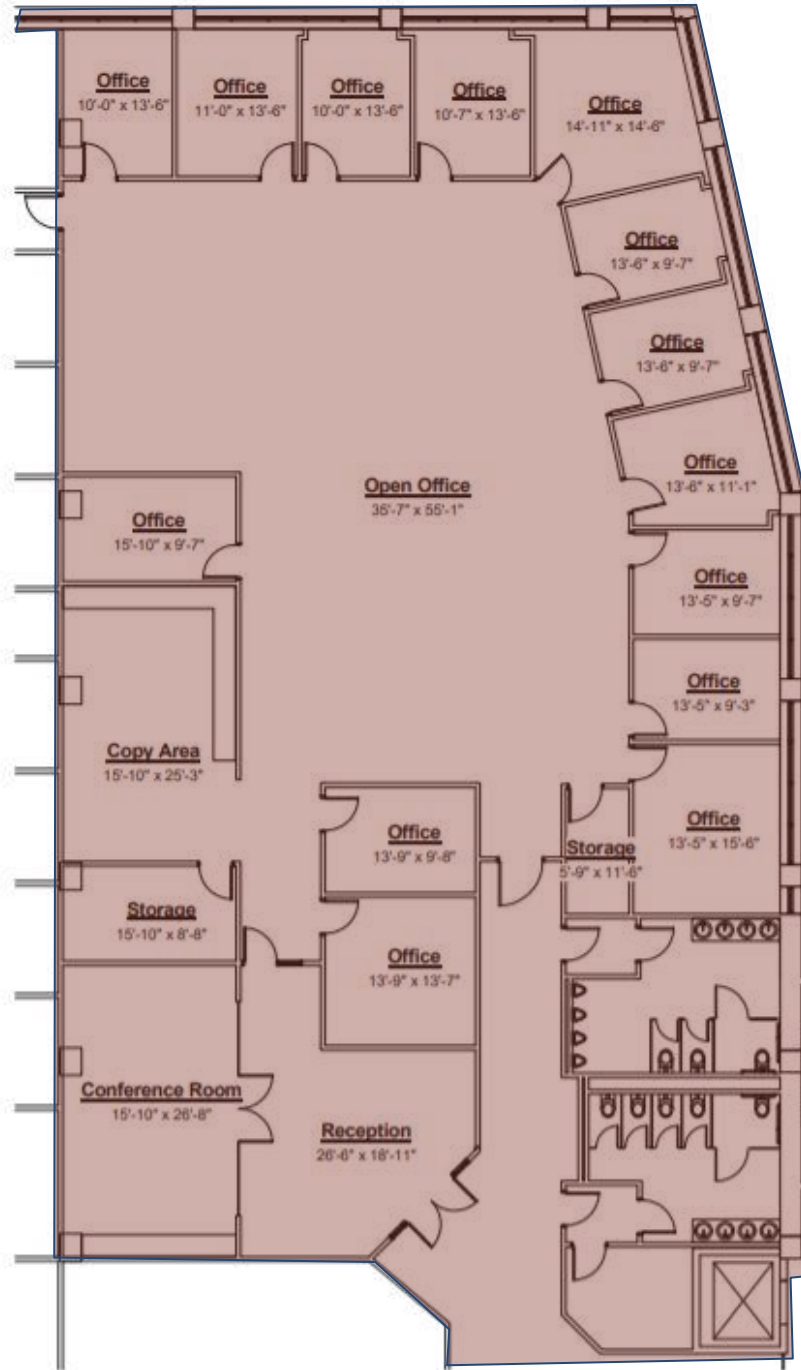
**FLOOR PLAN**  
**Suite 1230 | 2,512 sf**





# FLOOR PLAN

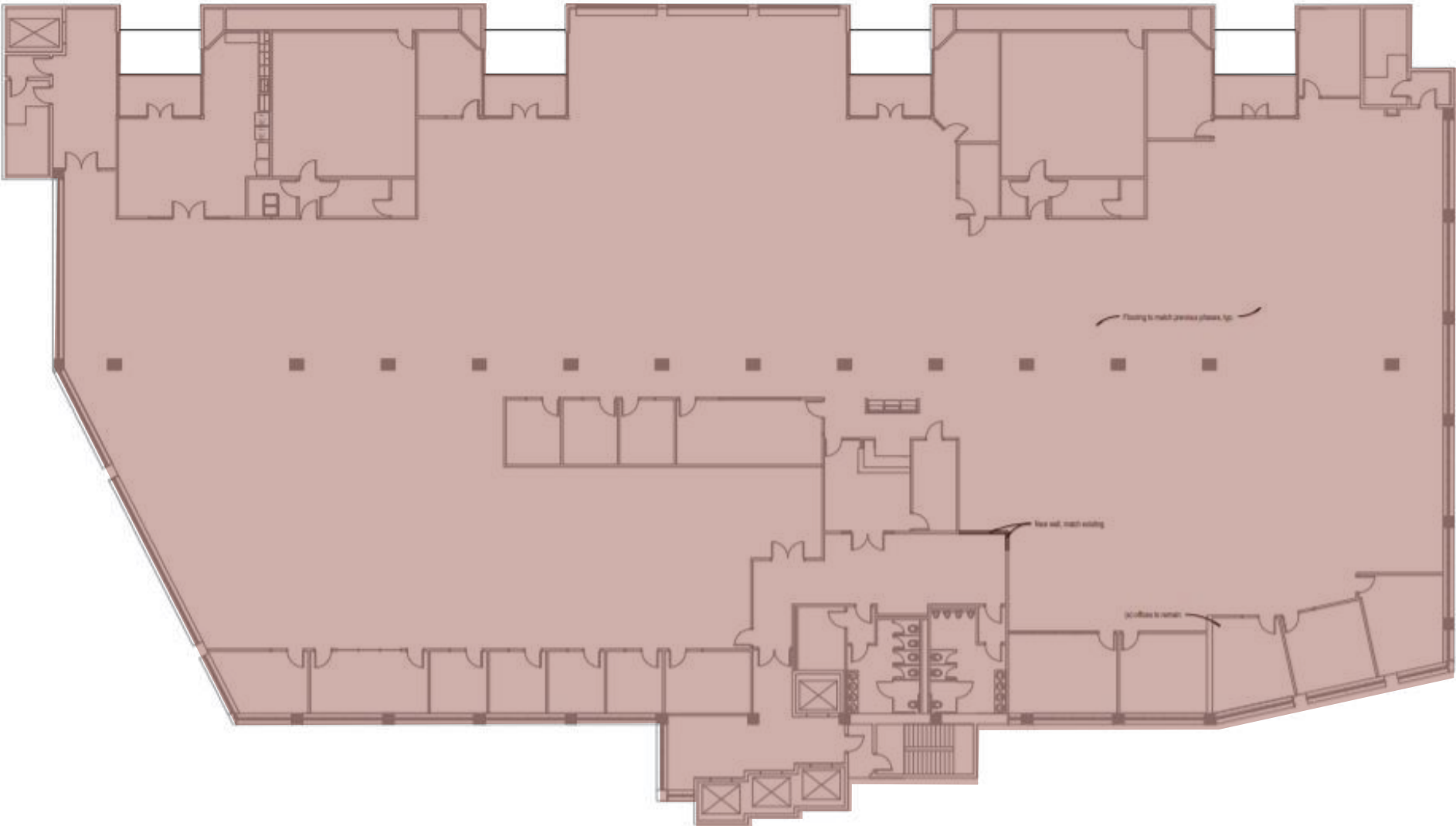
Suite 1320 | 7,404 sf





**FLOOR PLAN**

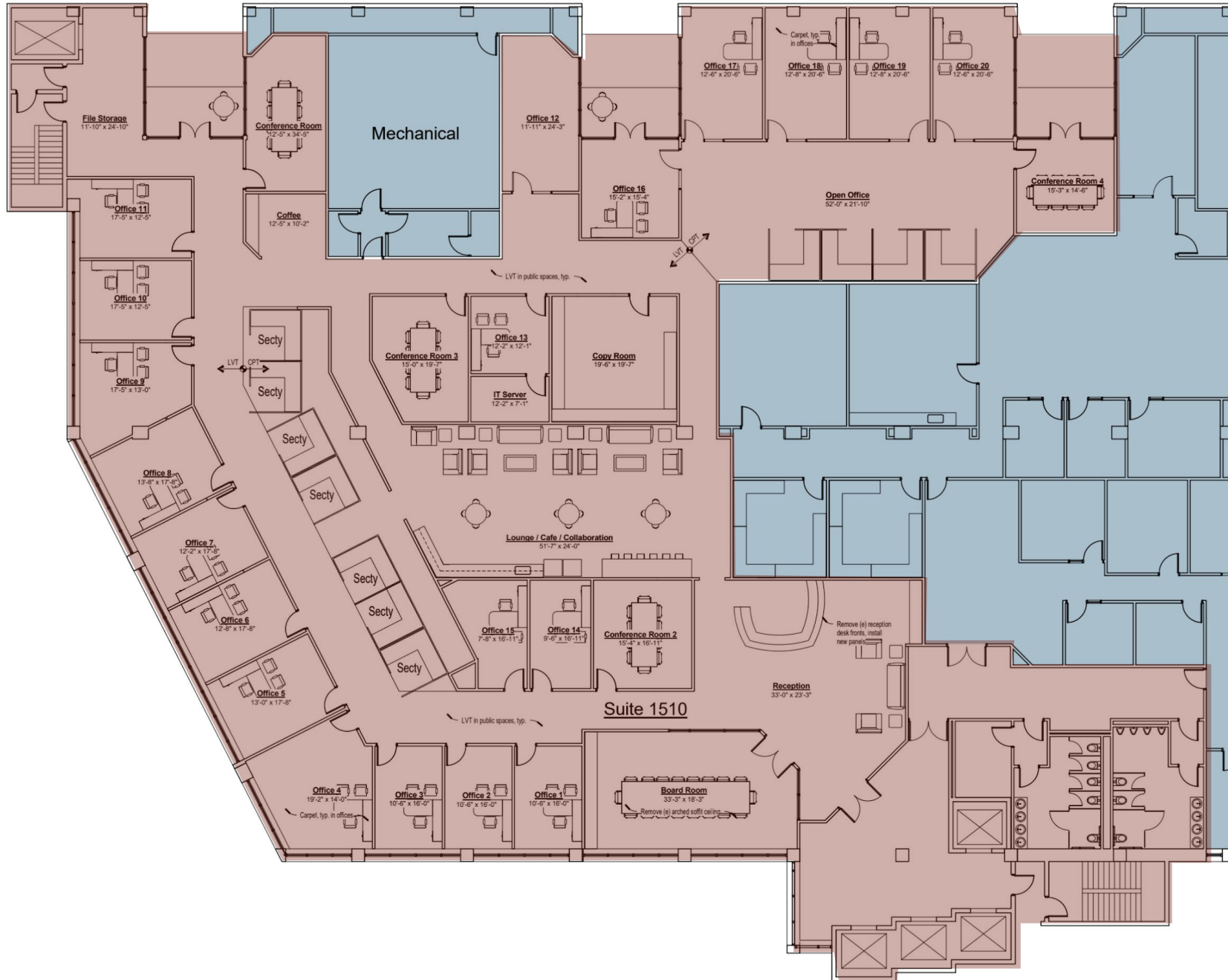
Suite 1405 | 31,895 sf





# FLOOR PLAN

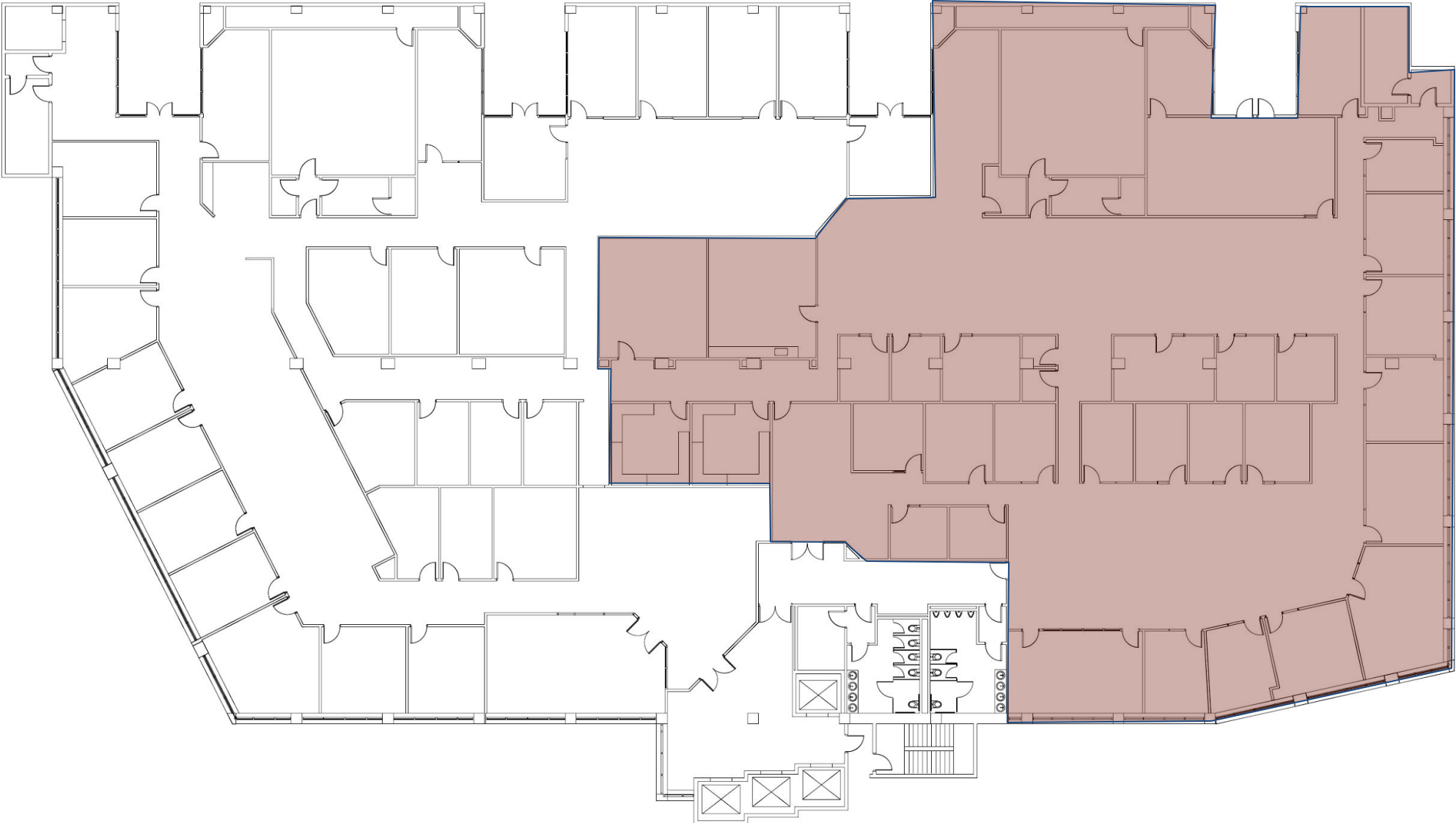
Suite 1510 | 17,195 sf





**FLOOR PLAN**

**Suite 1500 | 14,699 sf**





**FLOOR PLAN**

Suite 1500 | 31,894 sf

