

Great central location with Best-In-Class Amenities

Point West Corporate Centre

Prominent Building Signage Available



EXCLUSIVELY MARKETING BY: **Todd Eschelman**
916.569.2347
todd.eschelman@nrmk.com
CA RE License #01051148

Kirk Lange
916.569.2331
kirk.lange@nrmk.com
CA RE License #00870313

Jack Blackmon
916.569.2372
jack.blackmon@nrmk.com
CA RE License #01999561

NEWMARK


BASIN STREET
PROPERTIES

PointWestPortfolio.com

Highly desirable Point West Submarket



Units from ±1,105 RSF - ±11,544 RSF

- Classic brick architecture with expansive windowline and courtyard views
- Onsite property manager & facilities engineer
- Onsite conference room and fitness center with showers
- Beautiful courtyard with shaded outdoor seating and outdoor water feature
- Located within minutes of Sacramento's CBD
- Restaurants and retail services immediately adjacent to the property
- Immediate freeway access to Business Hwy 80
- Onsite security patrol
- Short walk to Arden Fair Mall

“You've got a great team here, and it really is a pleasure to work at this excellent and ever-improving site. I've been the boss of a few places around the state, and I've certainly dealt with my share of landlords over the years, but I'd say that dealing with Basin Street has definitely been my best experience so far.”

- Phil Bonnet, Executive Director
Alta California Regional Center

“Thank you for the communication. I oversee multiple offices and this is, by far, the best communication we have received regarding property protocol. I appreciate it.”

- Nick Cecchetti, Regional Director
Cornerstone Staffing Solutions

1610 Arden Way, Sacramento, CA Point West Corporate Center



PointWestPortfolio.com

Highly desirable Point West Submarket



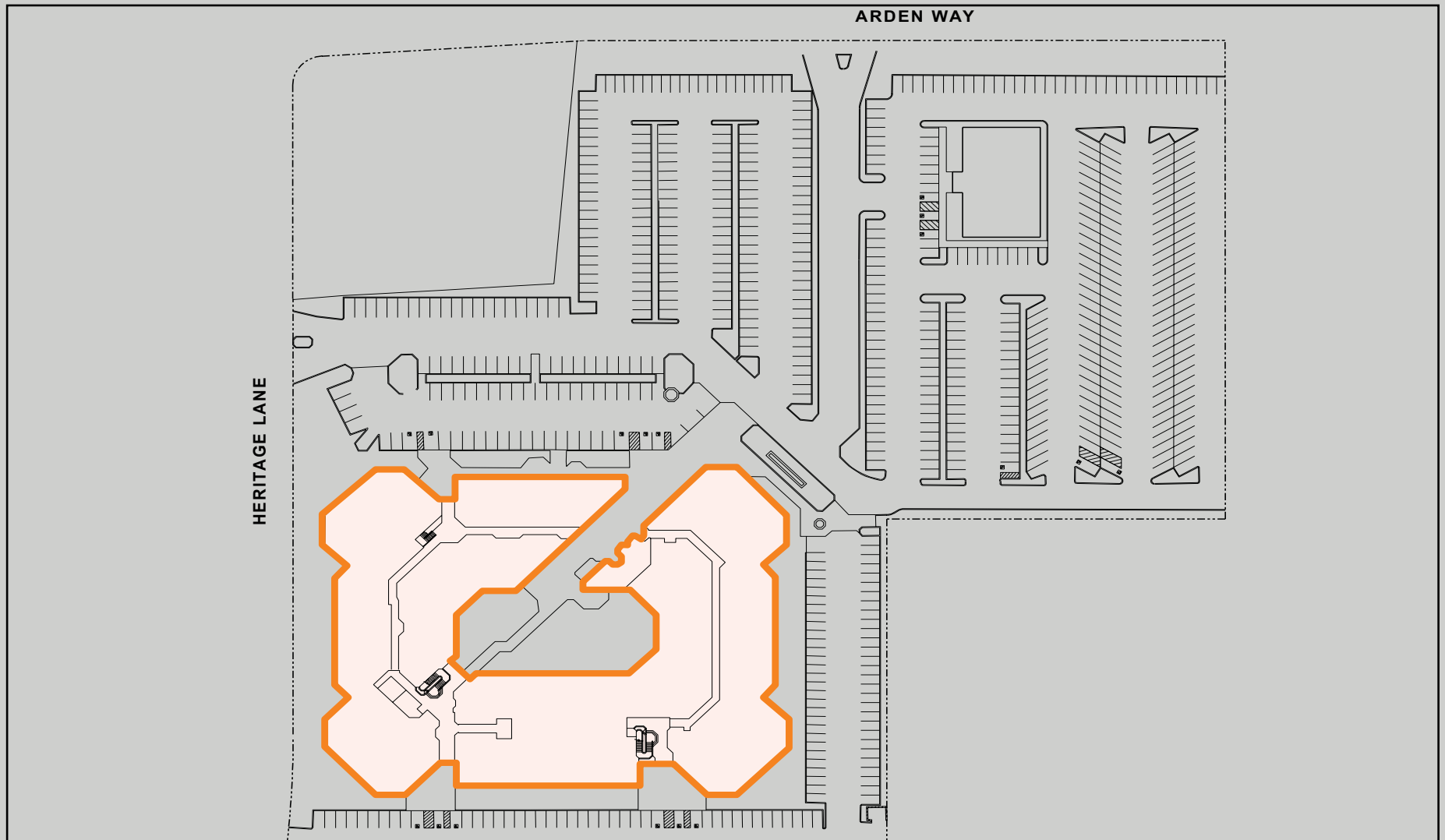
NEWMARK

EXCLUSIVELY MARKETING BY: **Todd Eschelman**
916.569.2347
todd.eschelman@nrmk.com
CA RE License #01051148

Kirk Lange
916.569.2331
kirk.lange@nrmk.com
CA RE License #00870313

Jack Blackmon
916.569.2372
jack.blackmon@nrmk.com
CA RE License #01999561

Site Plan



EXCLUSIVELY MARKETED BY: **Todd Eschelman**
916.569.2347
todd.eschelman@nrmk.com
CA RE License #01051148

Kirk Lange
916.569.2331
kirk.lange@nrmk.com
CA RE License #00870313

Jack Blackmon
916.569.2372
jack.blackmon@nrmk.com
CA RE License #01999561

1610 Arden Way, Sacramento, CA Point West Corporate Center



PointWestPortfolio.com

Amenities Aerial & Location Map



EXCLUSIVELY MARKETED BY: **Todd Eschelman**
916.569.2347
todd.eschelman@nrmk.com
CA RE License #01051148

Kirk Lange
916.569.2331
kirk.lange@nrmk.com
CA RE License #00870313

Jack Blackmon
916.569.2372
jack.blackmon@nrmk.com
CA RE License #01999561



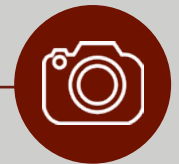
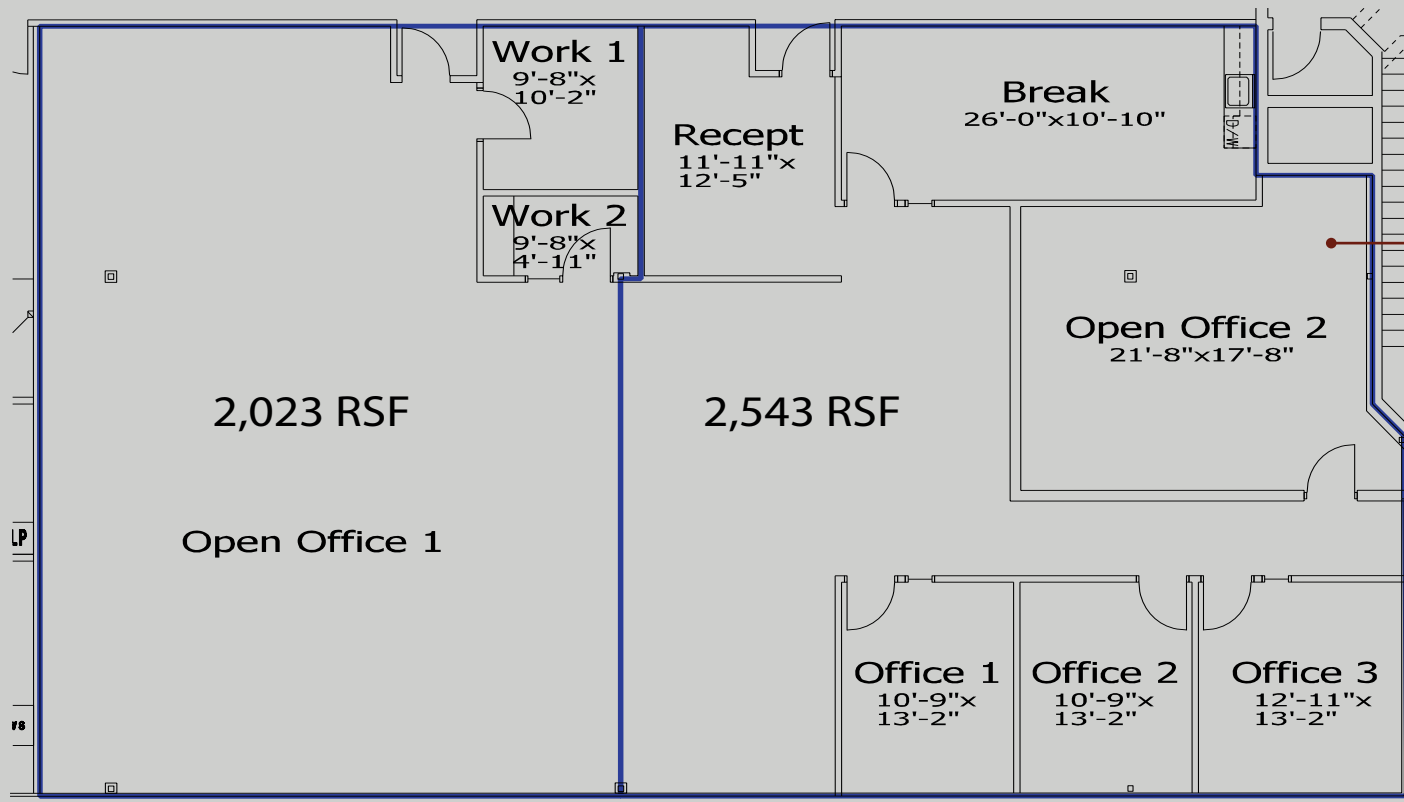
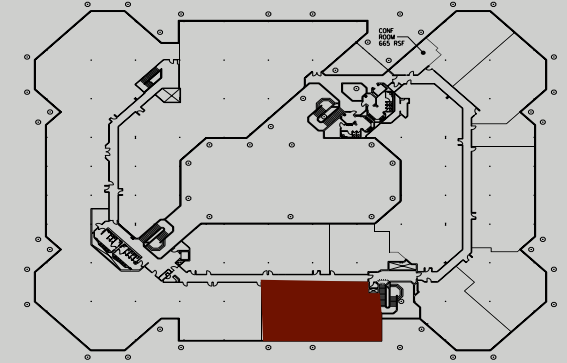
1610 Arden Way, Sacramento, CA
Point West Corporate Center



PointWestPortfolio.com

2,023 - 4,566 RSF
SUITE 270

SECOND FLOOR



**CLICK HERE
FOR PHOTO/VIDEO**
Suite 270



EXCLUSIVELY MARKETING BY: **Todd Eschelman**
916.569.2347
todd.eschelman@nrmk.com
CA RE License #01051148

Kirk Lange
916.569.2331
kirk.lange@nrmk.com
CA RE License #00870313

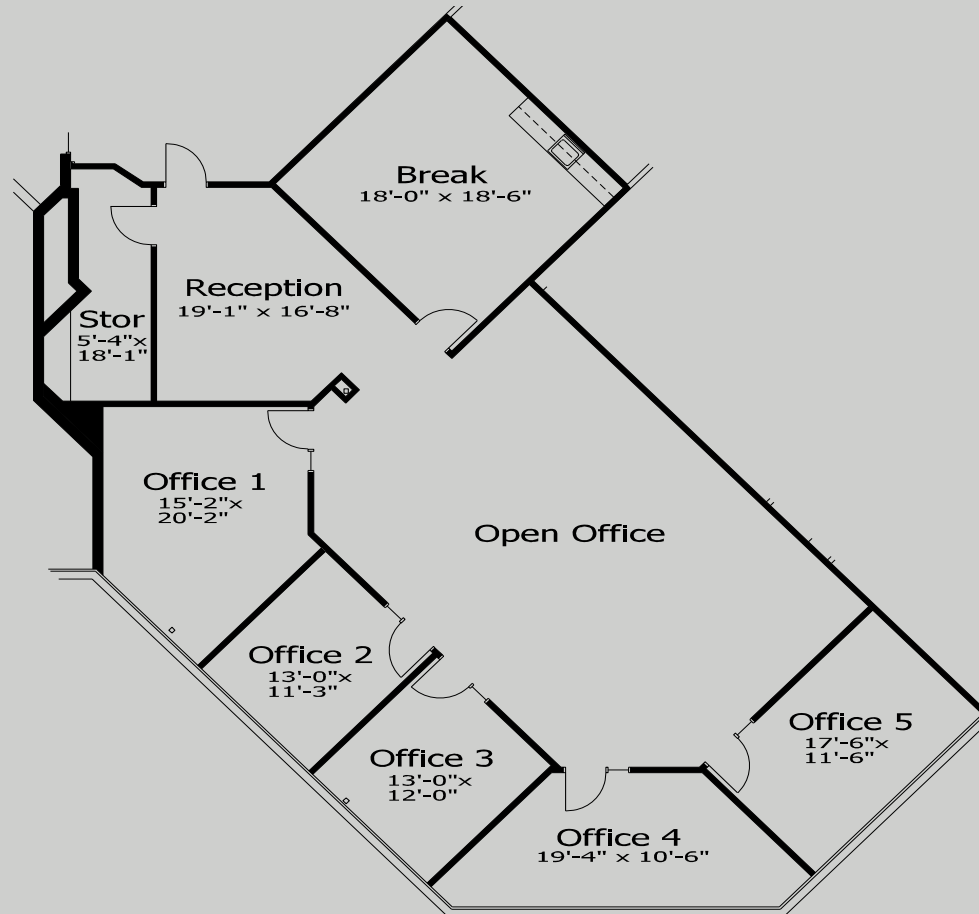
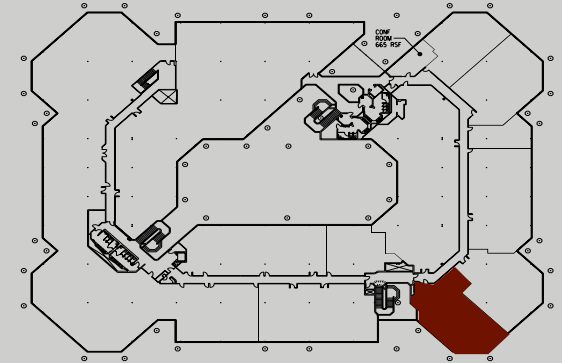
Jack Blackmon
916.569.2372
jack.blackmon@nrmk.com
CA RE License #01999561

1610 Arden Way, Sacramento, CA
Point West Corporate Center



3,064 RSF
SUITE 273

SECOND FLOOR



EXCLUSIVELY MARKETED BY: **Todd Eschelman**
916.569.2347
todd.eschelman@nrmk.com
CA RE License #01051148

Kirk Lange
916.569.2331
kirk.lange@nrmk.com
CA RE License #00870313

Jack Blackmon
916.569.2372
jack.blackmon@nrmk.com
CA RE License #01999561

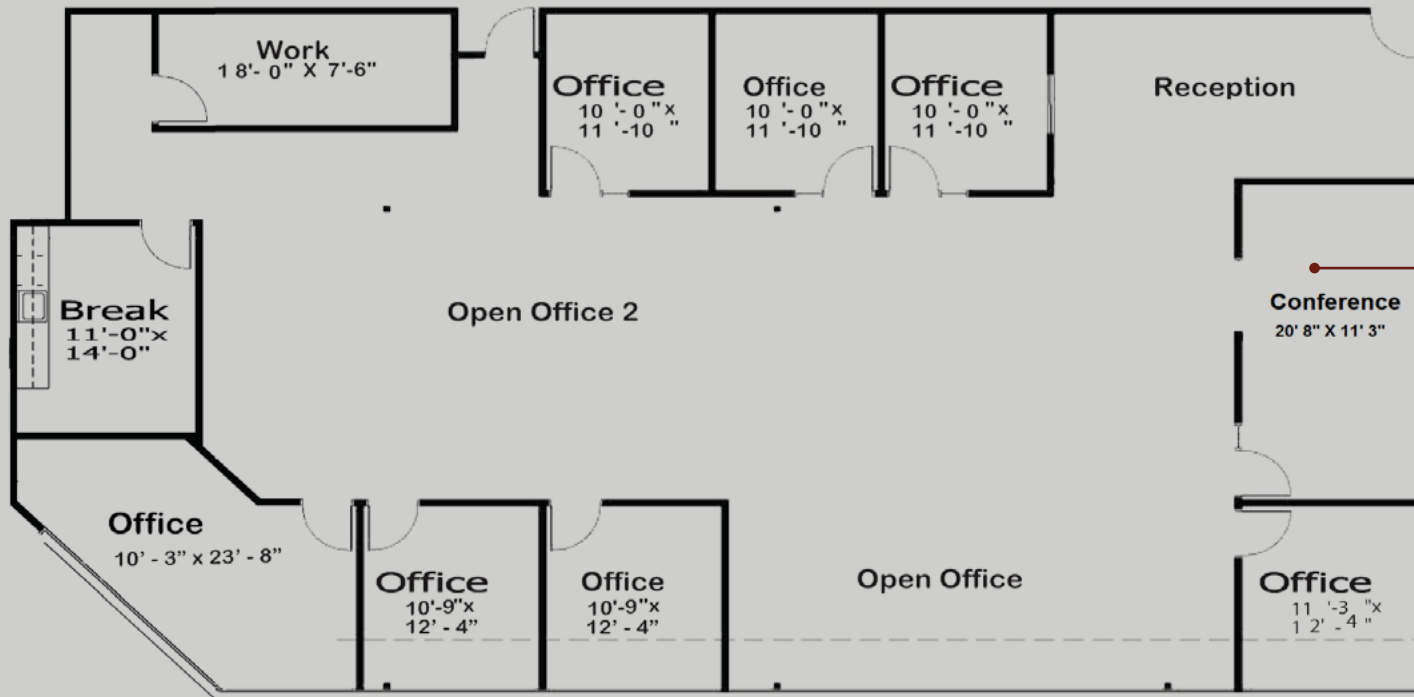
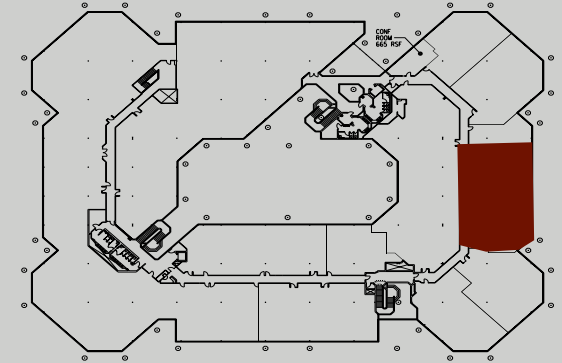
1610 Arden Way, Sacramento, CA
Point West Corporate Center



PointWestPortfolio.com

4,369 RSF
SUITE 277

SECOND FLOOR



**CLICK HERE
FOR PHOTO/VIDEO**

Suite 277



EXCLUSIVELY MARKETED BY: **Todd Eschelman**
916.569.2347
todd.eschelman@nrmk.com
CA RE License #01051148

Kirk Lange
916.569.2331
kirk.lange@nrmk.com
CA RE License #00870313

Jack Blackmon
916.569.2372
jack.blackmon@nrmk.com
CA RE License #01999561

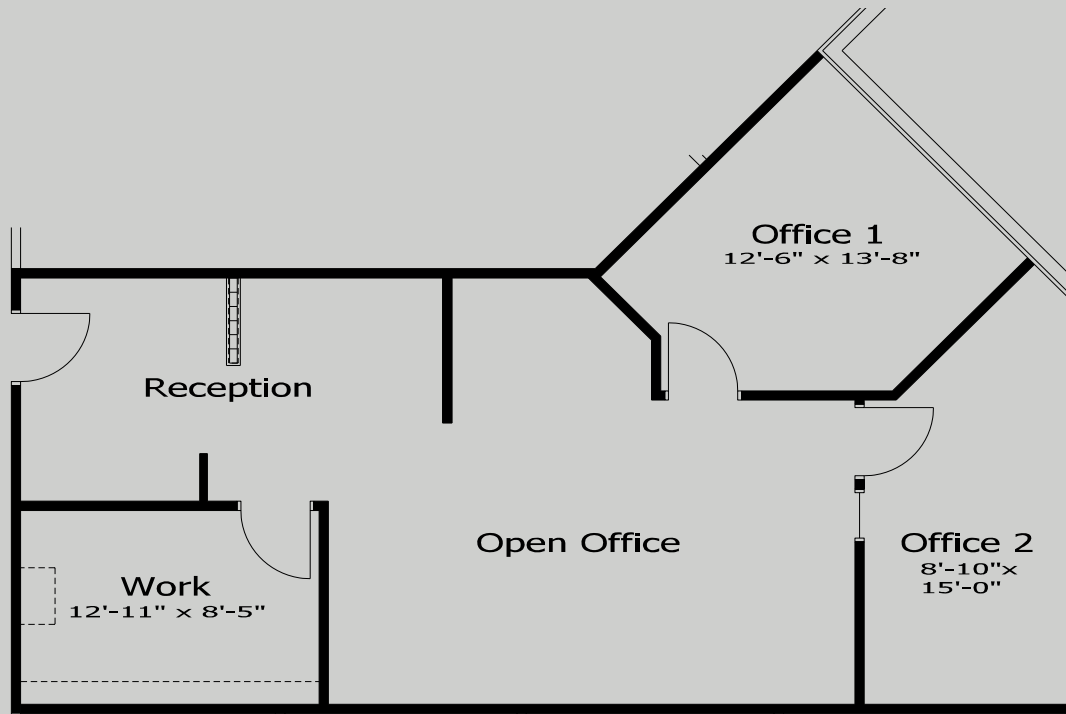
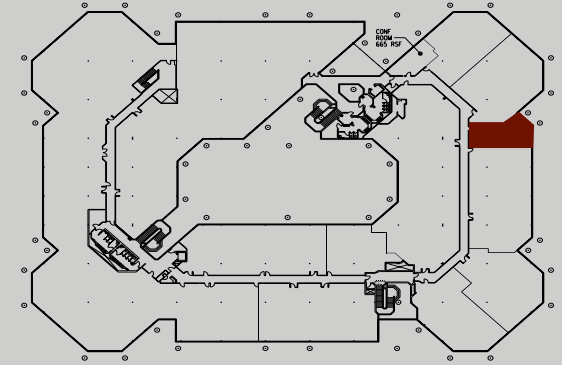
1610 Arden Way, Sacramento, CA
Point West Corporate Center



PointWestPortfolio.com

1,105 RSF
SUITE 287

SECOND FLOOR



EXCLUSIVELY MARKETED BY: **Todd Eschelman**
916.569.2347
todd.eschelman@nrmk.com
CA RE License #01051148

Kirk Lange
916.569.2331
kirk.lange@nrmk.com
CA RE License #00870313

Jack Blackmon
916.569.2372
jack.blackmon@nrmk.com
CA RE License #01999561

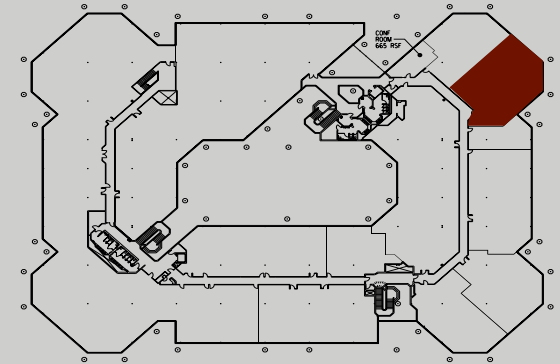
1610 Arden Way, Sacramento, CA
Point West Corporate Center



3,492 RSF

SUITE 295

SECOND FLOOR



EXCLUSIVELY MARKETED BY: **Todd Eschelman**
916.569.2347
todd.eschelman@nrmk.com
CA RE License #01051148

Kirk Lange
916.569.2331
kirk.lange@nrmk.com
CA RE License #00870313

Jack Blackmon
916.569.2372
jack.blackmon@nrmk.com
CA RE License #01999561

1610 Arden Way, Sacramento, CA
Point West Corporate Center

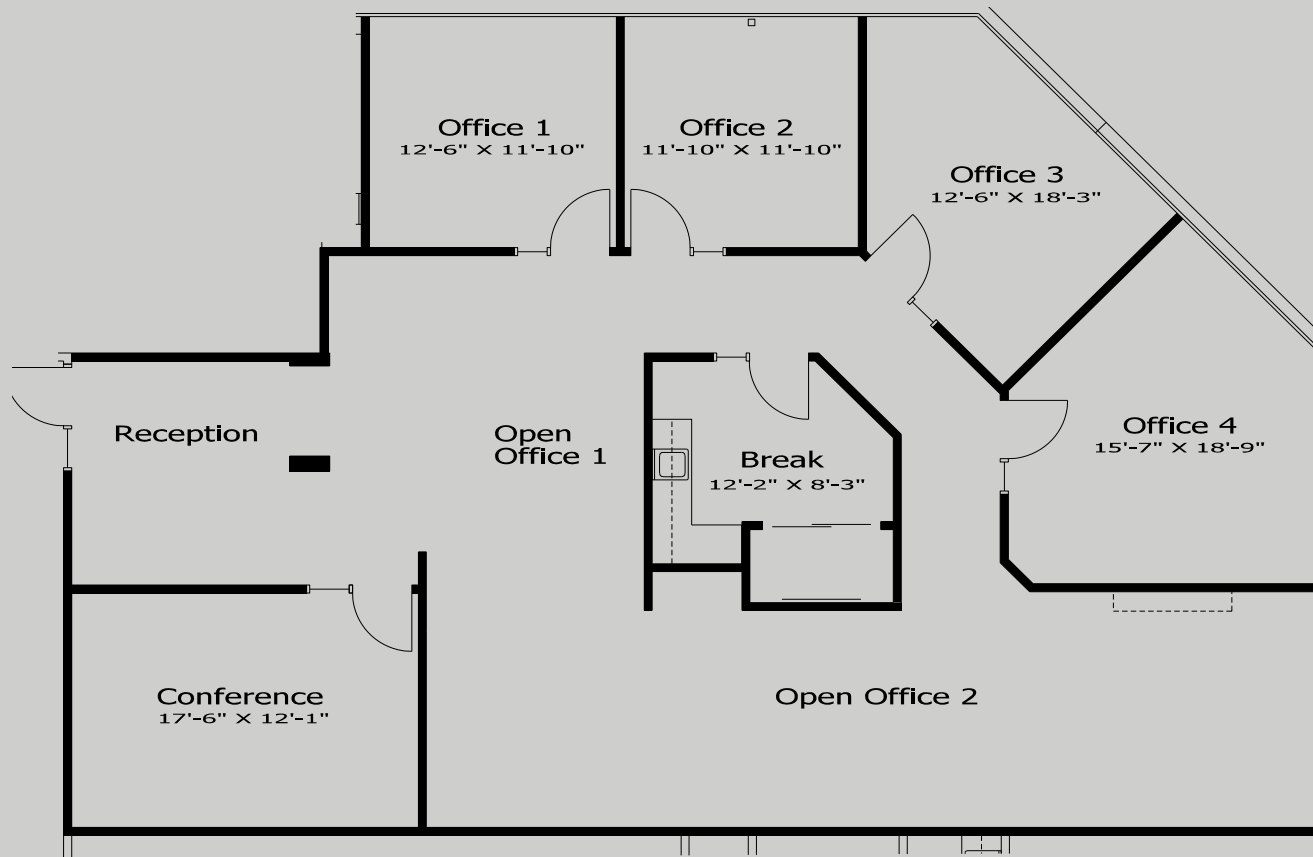
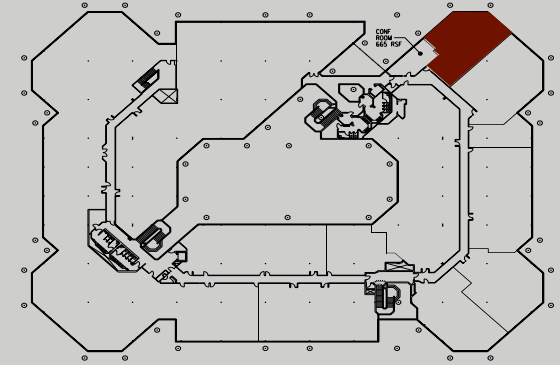


PointWestPortfolio.com

2,578 RSF

SUITE 299

SECOND FLOOR



EXCLUSIVELY MARKETING BY: **Todd Eschelman**
916.569.2347
todd.eschelman@nrmk.com
CA RE License #01051148

Kirk Lange
916.569.2331
kirk.lange@nrmk.com
CA RE License #00870313

Jack Blackmon
916.569.2372
jack.blackmon@nrmk.com
CA RE License #01999561



1610 Arden Way, Sacramento, CA Point West Corporate Center



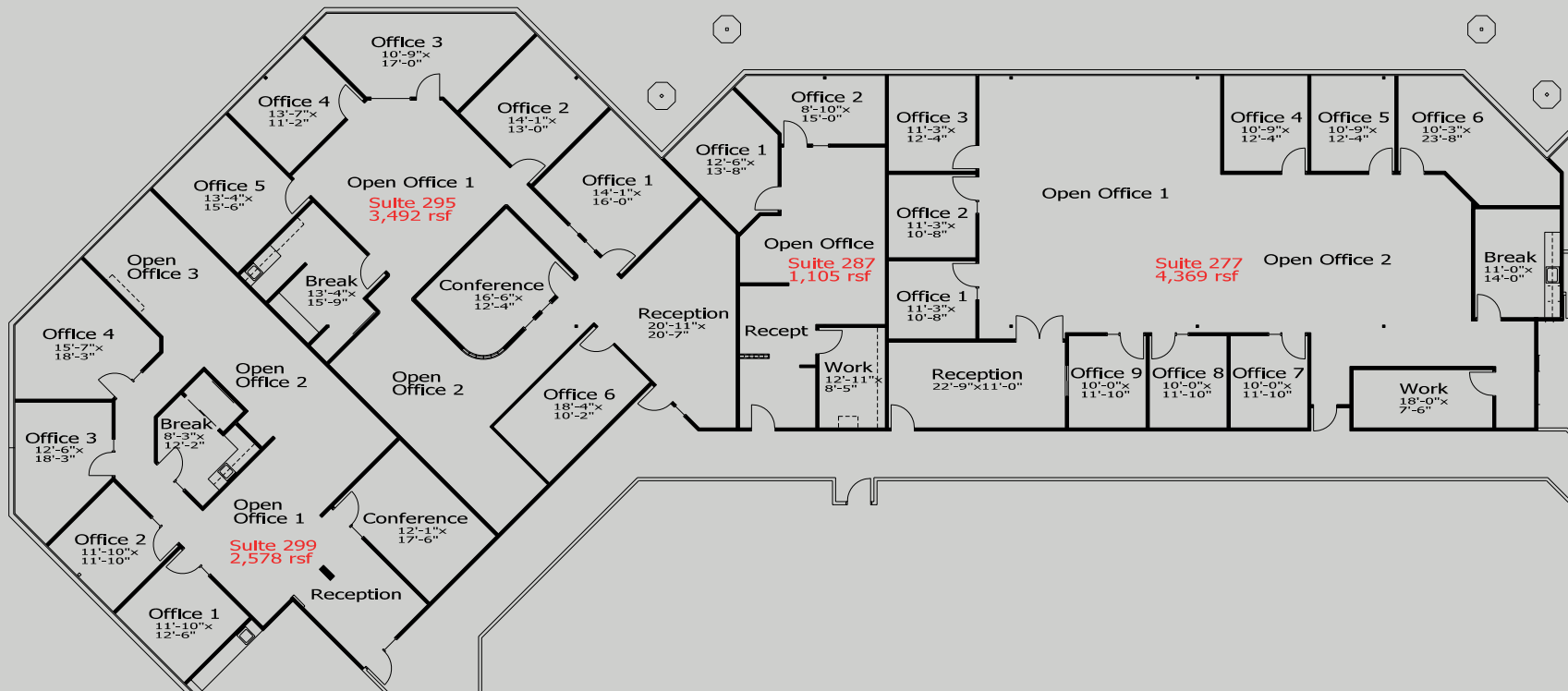
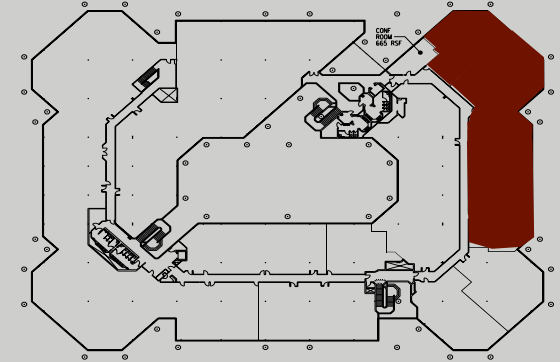
BASIN STREET
PROPERTIES

PointWestPortfolio.com

11,544 RSF

SUITE 277, 287, 295 & 299 (combined)

SECOND FLOOR



18-1186 4/22

EXCLUSIVELY MARKETING BY: **Todd Eschelman**

916.569.2347
todd.eschelman@nrmk.com
CA RE License #01051148

Kirk Lange

916.569.2331
kirk.lange@nrmk.com
CA RE License #00870313

Jack Blackmon

916.569.2372
jack.blackmon@nrmk.com
CA RE License #01999561

NEWMARK