

Class A 75,000 Square Foot Professional Office Building

Exposition Centre

Convenient Central Location in the Heart of Sacramento



NEWMARK

EXCLUSIVELY
MARKETED BY:

Todd Eschelman
916.569.2347
todd.eschelman@nrmk.com
CA RE License #01051148

Kirk Lange
916.569.2331
kirk.lange@nrmk.com
CA RE License #00870313

Jack Blackmon
916.569.2372
jack.blackmon@nrmk.com
CA RE License #01999561


BASIN STREET
PROPERTIES

1601 Response Road, Sacramento, CA Exposition Centre



PointWestPortfolio.com

Timeless brick and glass architecture



Units from ±1,378 RSF - ±4,006 RSF

- Onsite conference room
- Shaded outdoor patio areas
- Located within minutes of Sacramento
- Numerous restaurants and retail services immediately adjacent to the property
- Immediate freeway access to Business Hwy 80
- Short walk to Arden Fair Mall
- Abundant onsite parking free of charge
- Building and monument signage
- Cafe and fitness center within parking lot
- Expansive windowline
- Renovated common areas

“You’ve got a great team here, and it really is a pleasure to work at this excellent and ever-improving site. I’ve been the boss of a few places around the state, and I’ve certainly dealt with my share of landlords over the years, but I’d say that dealing with Basin Street has definitely been my best experience so far.”
- Phil Bonnet, Executive Director
Alta California Regional Center

“Thank you for the communication. I oversee multiple offices and this is, by far, the best communication we have received regarding property protocol. I appreciate it.”
- Nick Cecchetti, Regional Director
Cornerstone Staffing Solutions



EXCLUSIVELY
MARKETED BY:

Todd Eschelman
916.569.2347
todd.eschelman@nrmk.com
CA RE License #01051148

Kirk Lange
916.569.2331
kirk.lange@nrmk.com
CA RE License #00870313

Jack Blackmon
916.569.2372
jack.blackmon@nrmk.com
CA RE License #01999561

1601 Response Road, Sacramento, CA Exposition Centre



PointWestPortfolio.com

Five-Story Class A Office Building



NEWMARK

EXCLUSIVELY
MARKETED BY:

Todd Eschelman
916.569.2347
todd.eschelman@nrmk.com
CA RE License #01051148

Kirk Lange
916.569.2331
kirk.lange@nrmk.com
CA RE License #00870313

Jack Blackmon
916.569.2372
jack.blackmon@nrmk.com
CA RE License #01999561

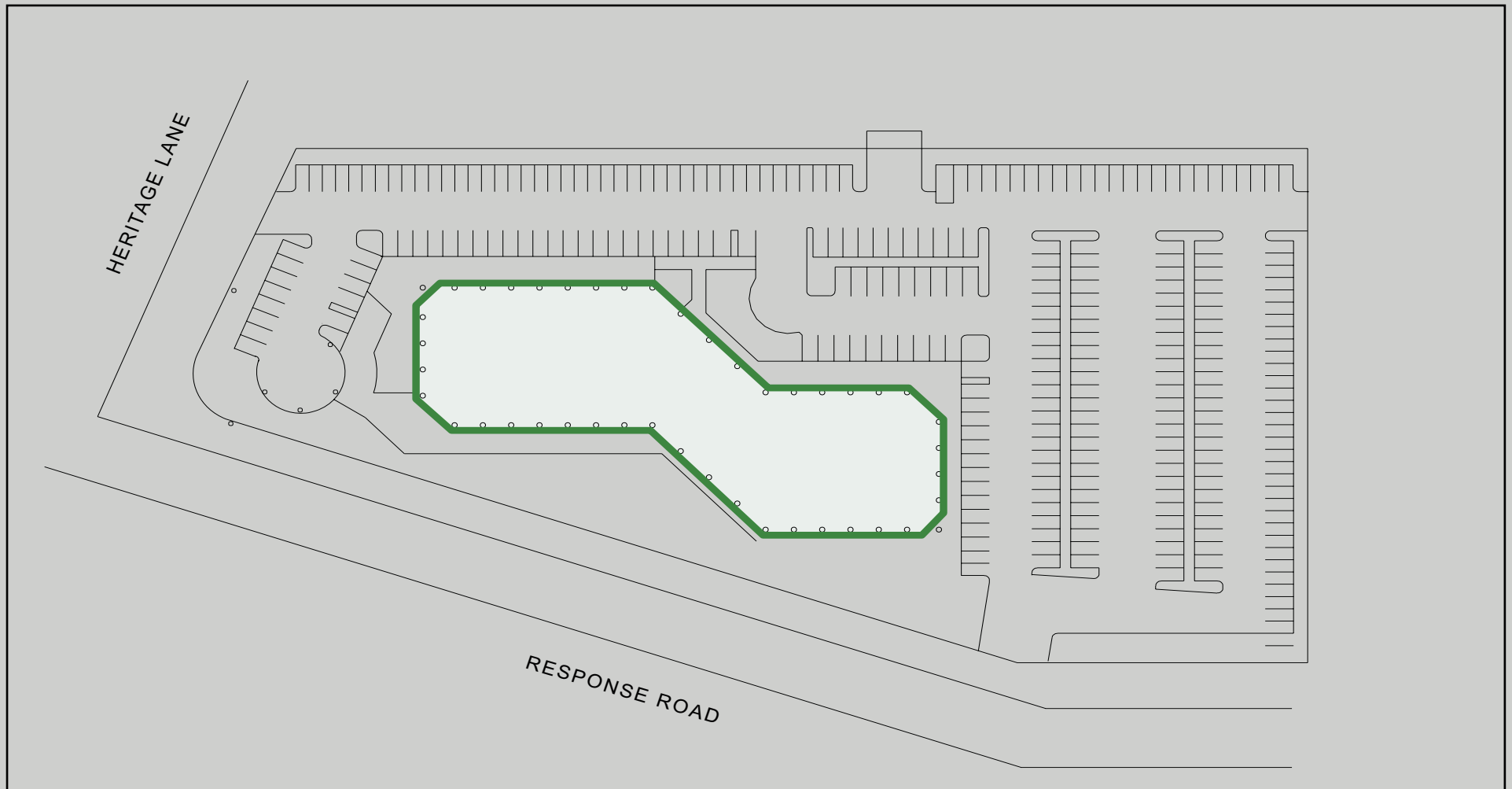
1601 Response Road, Sacramento, CA

Exposition Centre



PointWestPortfolio.com

Site Plan



NEWMARK

EXCLUSIVELY
MARKETED BY:

Todd Eschelman
916.569.2347
todd.eschelman@nrmk.com
CA RE License #01051148

Kirk Lange
916.569.2331
kirk.lange@nrmk.com
CA RE License #00870313

Jack Blackmon
916.569.2372
jack.blackmon@nrmk.com
CA RE License #01999561

1601 Response Road, Sacramento, CA Exposition Centre

PointWestPortfolio.com

Amenities Aerial & Location Map



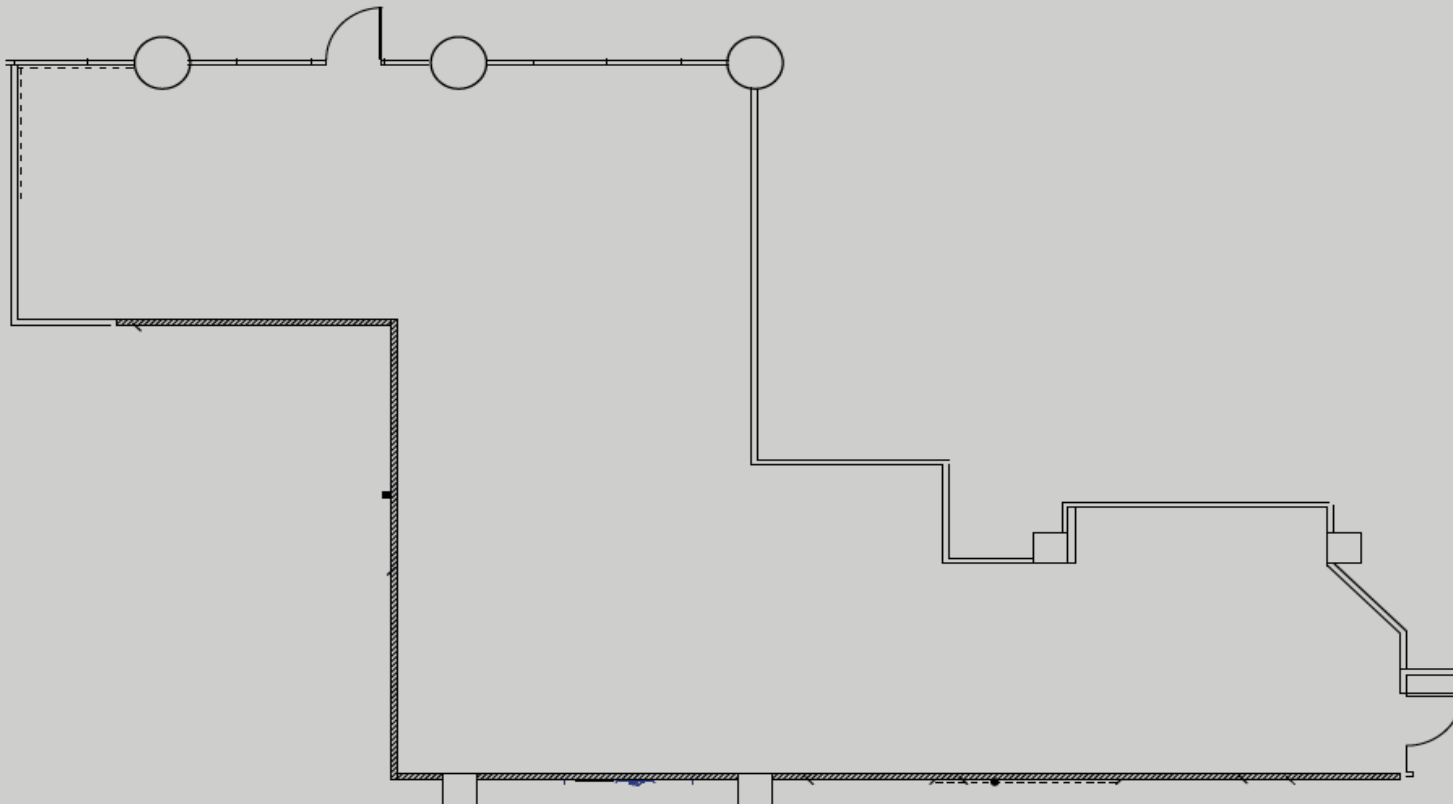
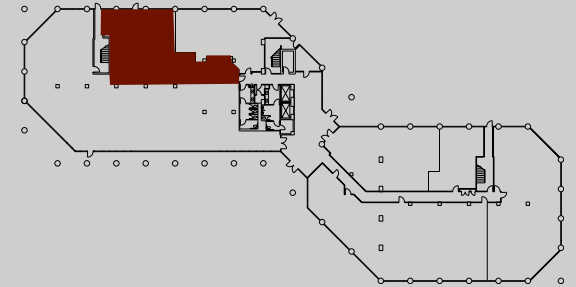
1601 Response Road, Sacramento, CA Exposition Centre



PointWestPortfolio.com

1,674 RSF
SUITE 120

FIRST FLOOR



NEWMARK

EXCLUSIVELY
MARKETED BY:

Todd Eschelman
916.569.2347
todd.eschelman@nrmk.com
CA RE License #01051148

Kirk Lange
916.569.2331
kirk.lange@nrmk.com
CA RE License #00870313

Jack Blackmon
916.569.2372
jack.blackmon@nrmk.com
CA RE License #01999561

1601 Response Road, Sacramento, CA Exposition Centre

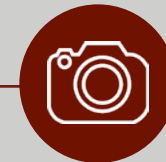
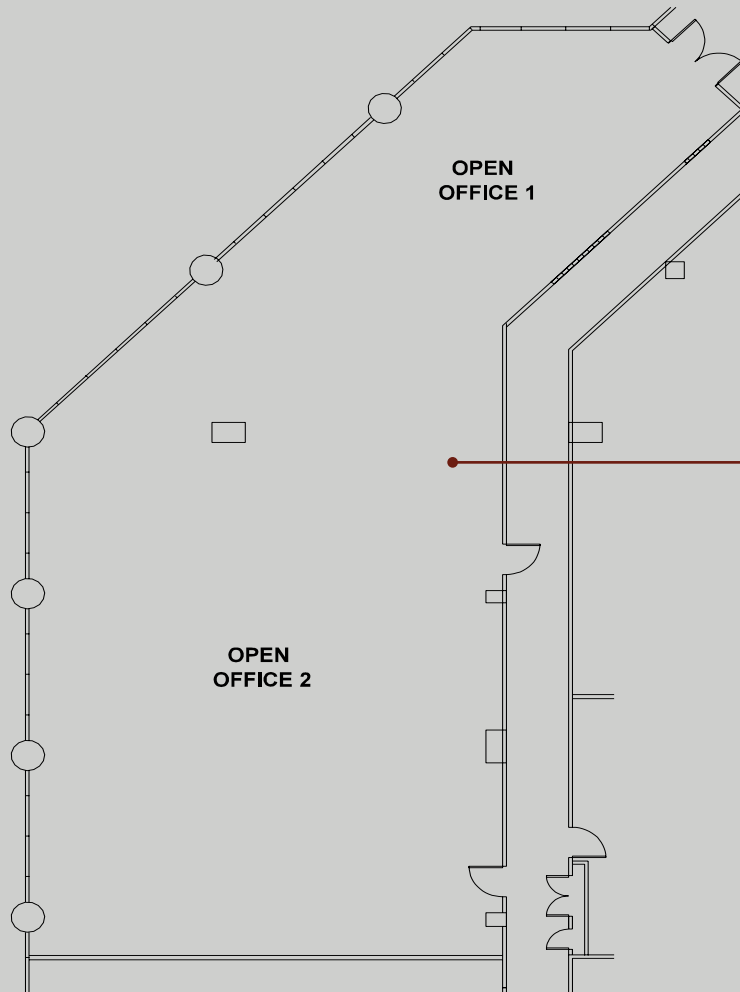
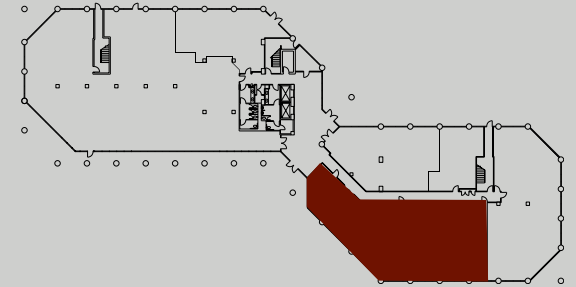


PointWestPortfolio.com

4,006 RSF

SUITE 160

FIRST FLOOR



**CLICK HERE
FOR PHOTO/VIDEO**

Suite 160

EXCLUSIVELY
MARKETED BY:

NEWMARK

Todd Eschelman

916.569.2347
todd.eschelman@nrmk.com
CA RE License #01051148

Kirk Lange

916.569.2331
kirk.lange@nrmk.com
CA RE License #00870313

Jack Blackmon

916.569.2372
jack.blackmon@nrmk.com
CA RE License #01999561

1601 Response Road, Sacramento, CA

Exposition Centre

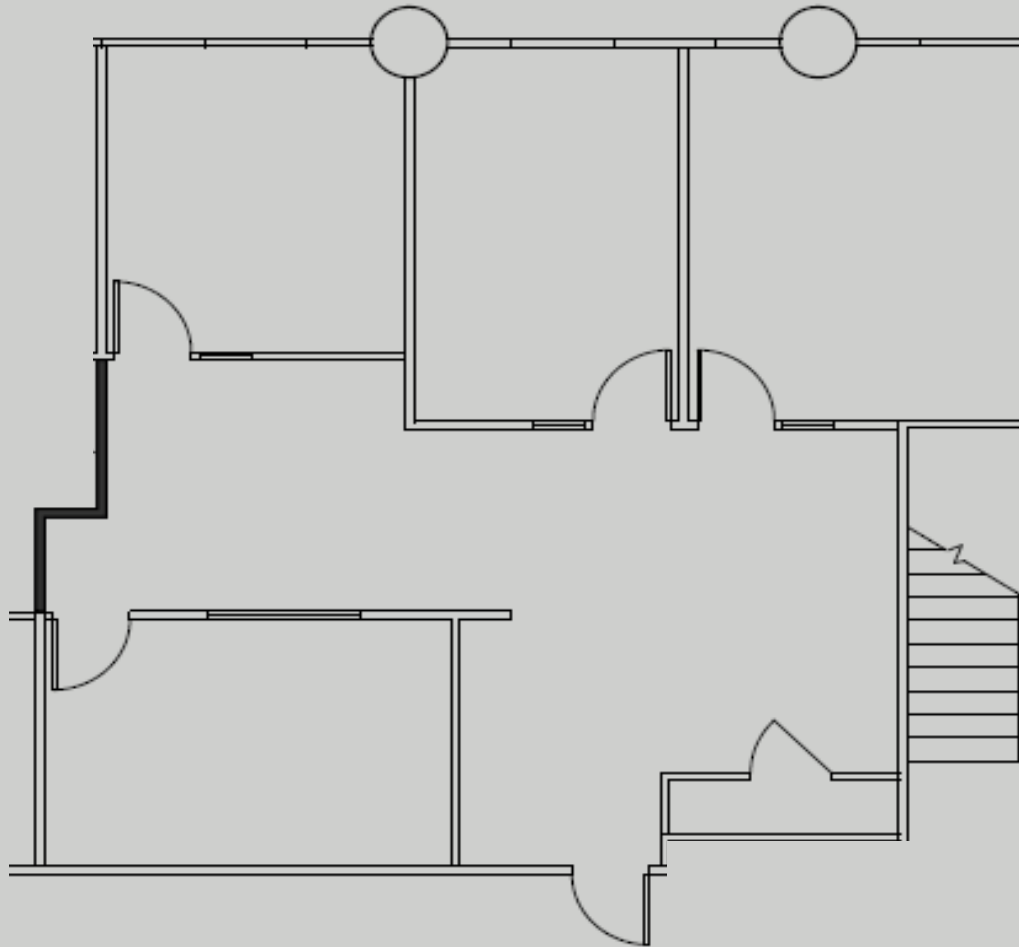
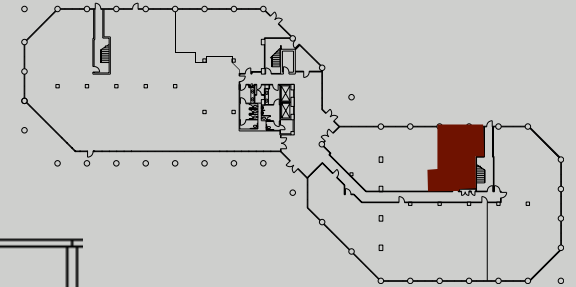


BASIN STREET
PROPERTIES

PointWestPortfolio.com

1,378 RSF
SUITE 180

FIRST FLOOR



NEWMARK

EXCLUSIVELY
MARKETED BY:

Todd Eschelman
916.569.2347
todd.eschelman@nrmk.com
CA RE License #01051148

Kirk Lange
916.569.2331
kirk.lange@nrmk.com
CA RE License #00870313

Jack Blackmon
916.569.2372
jack.blackmon@nrmk.com
CA RE License #01999561

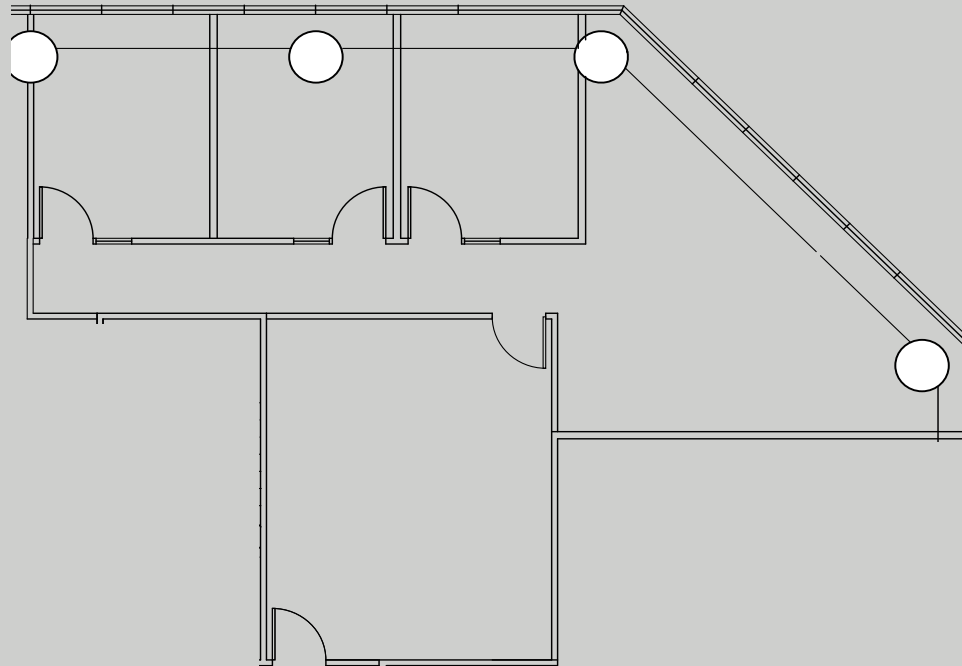
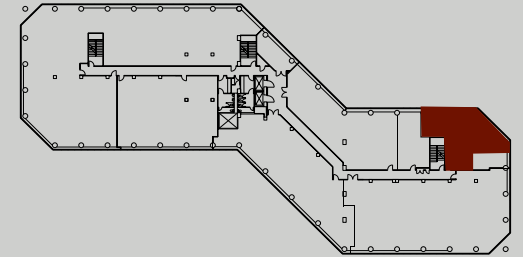
1601 Response Road, Sacramento, CA
Exposition Centre



PointWestPortfolio.com

1,432 RSF
SUITE 255

SECOND FLOOR



EXCLUSIVELY
MARKETED BY:

Todd Eschelman
916.569.2347
todd.eschelman@nrmk.com
CA RE License #01051148

Kirk Lange
916.569.2331
kirk.lange@nrmk.com
CA RE License #00870313

Jack Blackmon
916.569.2372
jack.blackmon@nrmk.com
CA RE License #01999561

1601 Response Road, Sacramento, CA

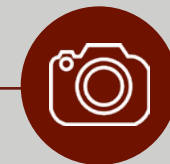
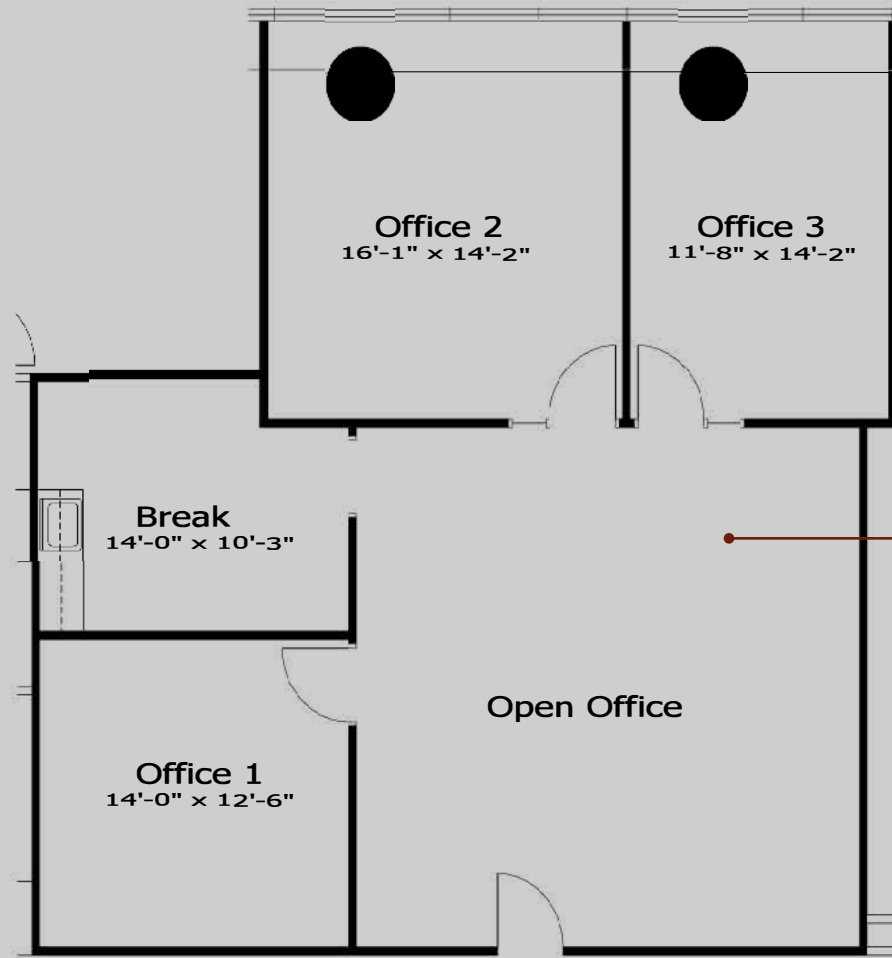
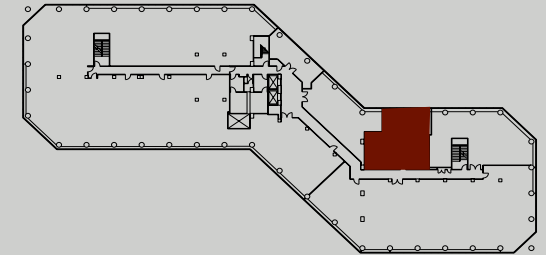
Exposition Centre



PointWestPortfolio.com

1,471 RSF
SUITE 380

THIRD FLOOR



**CLICK HERE
FOR PHOTO/VIDEO**

Suite 380



EXCLUSIVELY
MARKETED BY:

Todd Eschelman
916.569.2347
todd.eschelman@nrmk.com
CA RE License #01051148

Kirk Lange
916.569.2331
kirk.lange@nrmk.com
CA RE License #00870313

Jack Blackmon
916.569.2372
jack.blackmon@nrmk.com
CA RE License #01999561

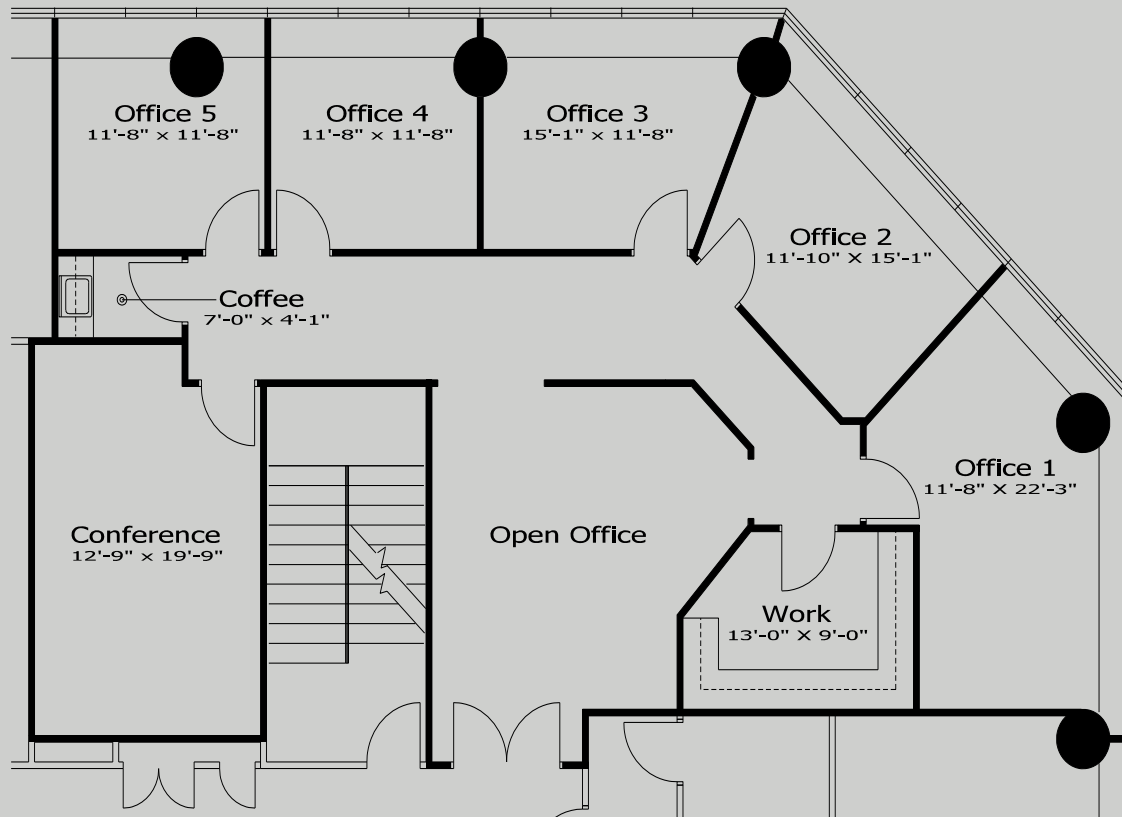
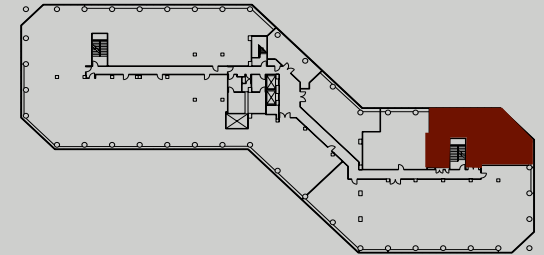
1601 Response Road, Sacramento, CA
Exposition Centre



PointWestPortfolio.com

2,159 RSF
SUITE 390

THIRD FLOOR



EXCLUSIVELY
MARKETED BY:

Todd Eschelmann
916.569.2347
todd.eschelmann@nrmk.com
CA RE License #01051148

Kirk Lange
916.569.2331
kirk.lange@nrmk.com
CA RE License #00870313

Jack Blackmon
916.569.2372
jack.blackmon@nrmk.com
CA RE License #01999561

1601 Response Road, Sacramento, CA Exposition Centre

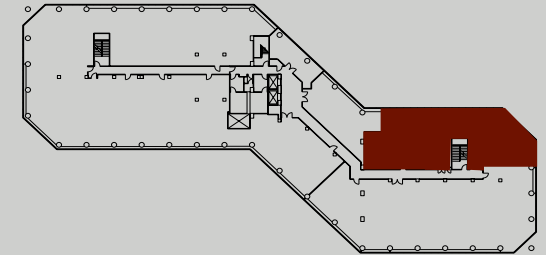


BASIN STREET
PROPERTIES

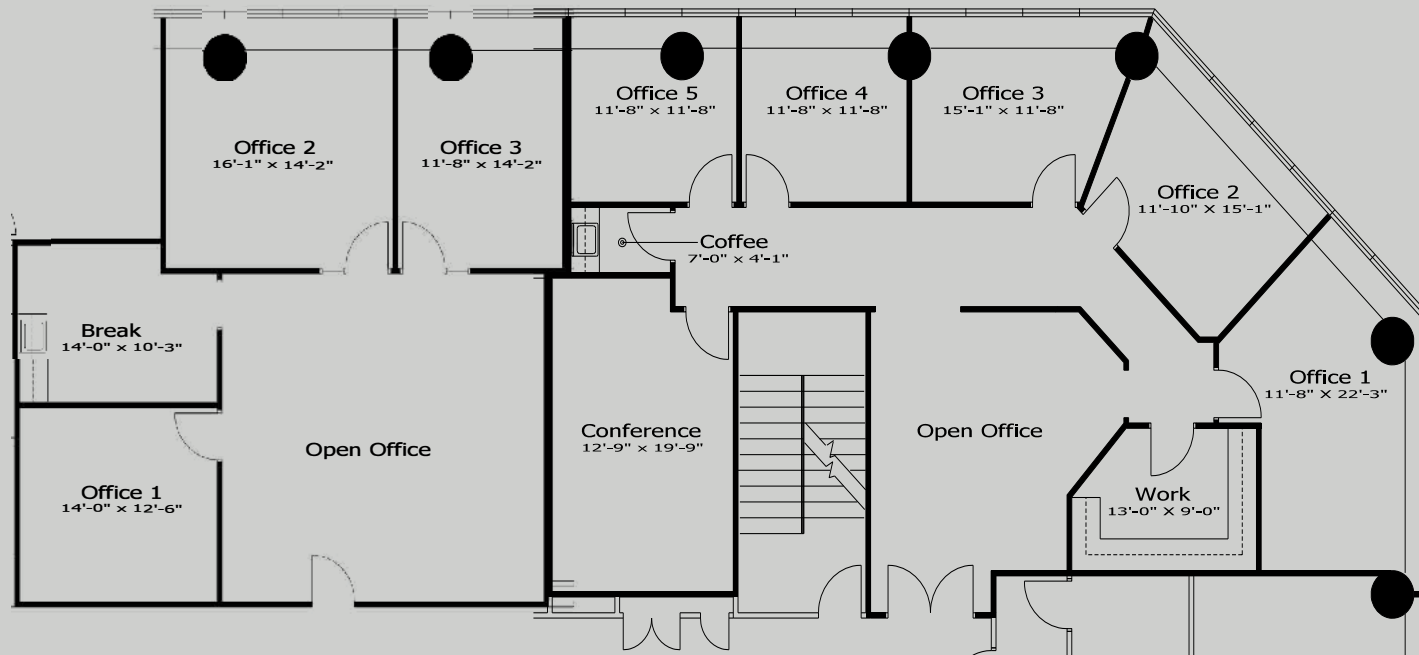
PointWestPortfolio.com

3,630 RSF

SUITE 385 & 390 (combined)



THIRD FLOOR



18-1185 4/22

NEWMARK

EXCLUSIVELY
MARKETED BY:

Todd Eschelmann
916.569.2347
todd.eschelmann@nrmk.com
CA RE License #01051148

Kirk Lange
916.569.2331
kirk.lange@nrmk.com
CA RE License #00870313

Jack Blackmon
916.569.2372
jack.blackmon@nrmk.com
CA RE License #01999561