

FOR LEASE

Theatre Square Office & Retail



Vibrant, Class "A" Office & Retail Spaces For Lease | Petaluma, CA



FOR LEASE **Petaluma** Theatre Square Office & Retail



Theatre Square is located in the Theatre District, Petaluma's premier downtown location, in the center of it all.

Type:
Office & Retail

Address:
140 Second Street
Petaluma, CA

Sol Food and Adobe Creek Brewery are now open!

www.theatre-district.com

DESCRIPTION

- Prompt decision-making & uncomplicated negotiations by local, reputable owner
- Class 'A' building with high-quality finishes throughout
- Abundant and convenient parking nearby
- Men's and women's shower/lockers for office tenants
- Operable windows
- Annual average daily traffic count at D Street & 1st Street is approximately 18,371



EXCLUSIVELY MARKETED BY THE DOWLING-BRACCO TEAM OF JLL | 707.421.2900

Tony Sarno
tony.sarno@am.jll.com
707.217.7196
RE License# 01430933

Jordan Lazor
jordan.lazor@am.jll.com
415.595.5102
RE License# 0201117

Laura Duffy
laura.duffy@am.jll.com
415.686.0255
RE License# 01922792

Glen Dowling
glen.dowling@am.jll.com
707.227.7800
RE License# 0890450

Jones Lang LaSalle Brokerage, Inc.
Real Estate License # 01856260

FOR LEASE Petaluma Theatre Square Office & Retail



©2022 Jones Lang LaSalle IP, Inc. All rights reserved. All information contained herein is from sources deemed reliable; however, no representation or warranty is made to the accuracy thereof.



EXCLUSIVELY MARKETING BY THE DOWLING-BRACCO TEAM OF JLL | 707.421.2900

Tony Sarno
tony.sarno@am.jll.com
707.217.7196
RE License# 01430933

Jordan Lazor
jordan.lazor@am.jll.com
415.595.5102
RE License# 0201117

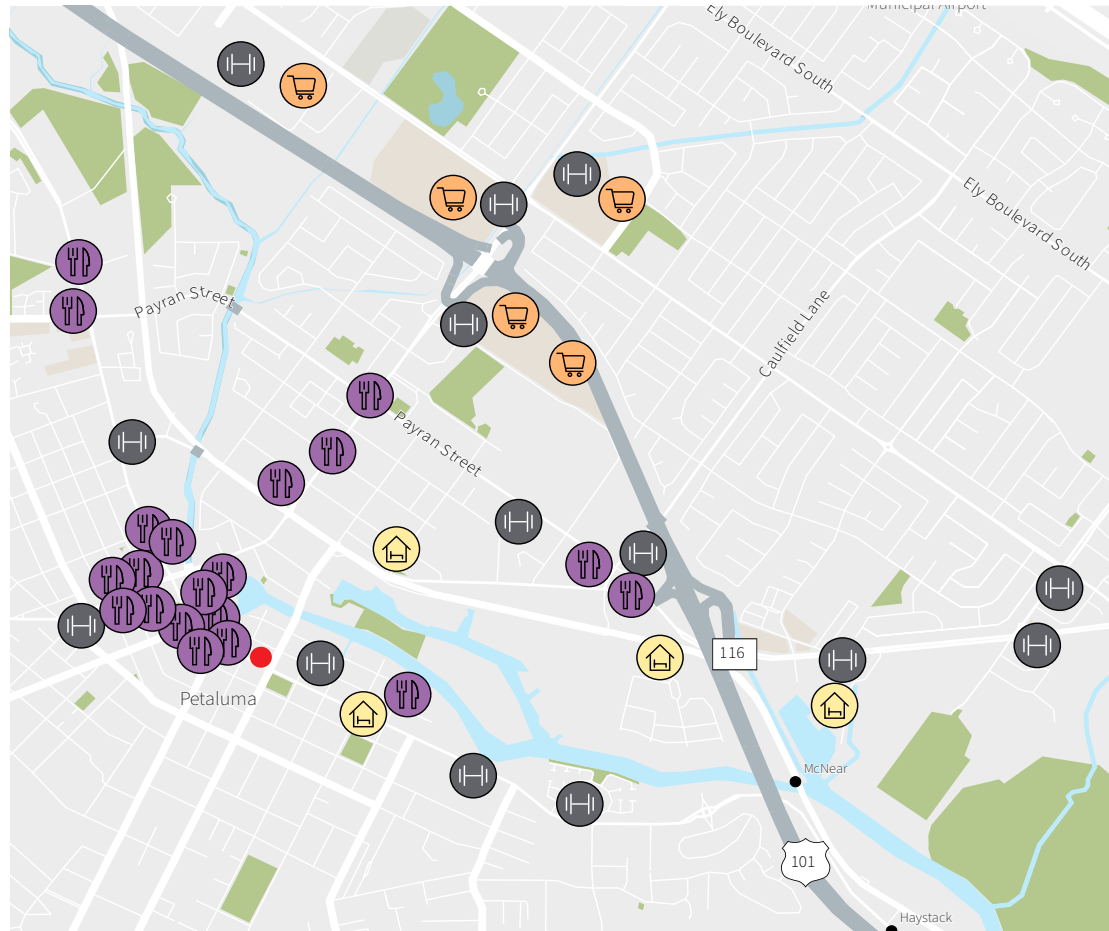
Laura Duffy
laura.duffy@am.jll.com
415.686.0255
RE License# 01922792

Glen Dowling
glen.dowling@am.jll.com
707.227.7800
RE License# 0890450

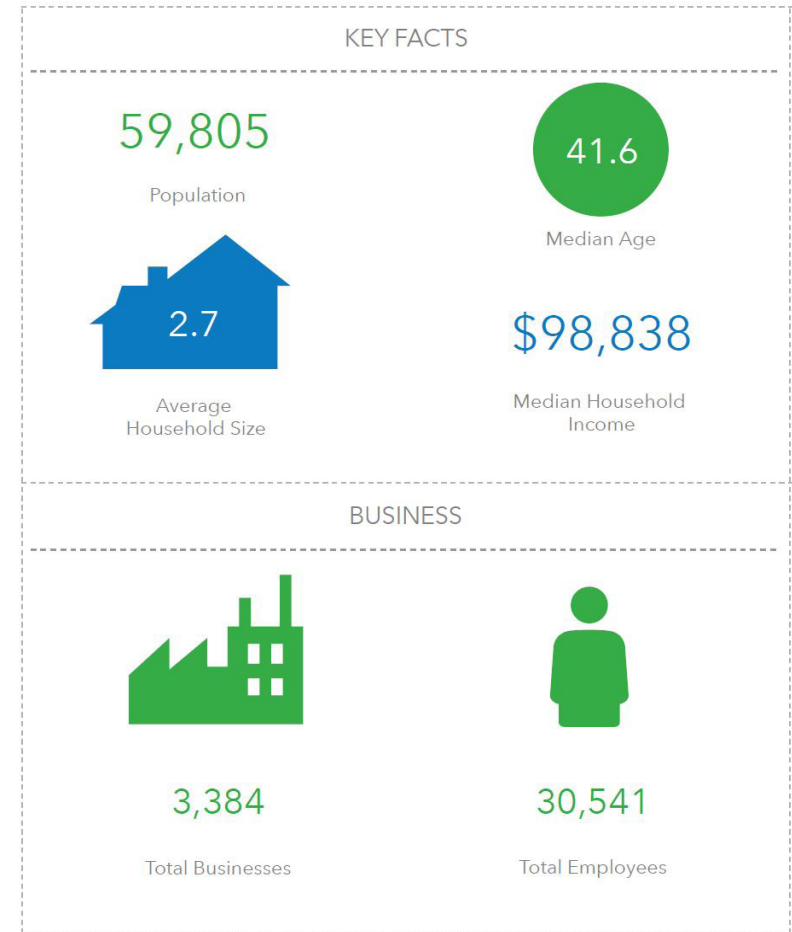
FOR LEASE **Petaluma**



Abundant Retail Amenities:



Healthy Petaluma Demographics:



In the heart of charming Petaluma you will find the region's premier open-air dining and retail destination venue featuring local downtown shopping, savory eateries and entertainment everyday of the year.

Situated along the historic and scenic Petaluma River, visitors can shop, dine, and play the day away at this mixed-use lifestyle center.

www.theatre-district.com



EXCLUSIVELY MARKETING BY THE DOWLING-BRACCO TEAM OF JLL | 707.421.2900

Tony Sarno
tony.sarno@am.jll.com
707.217.7196
RE License# 01430933

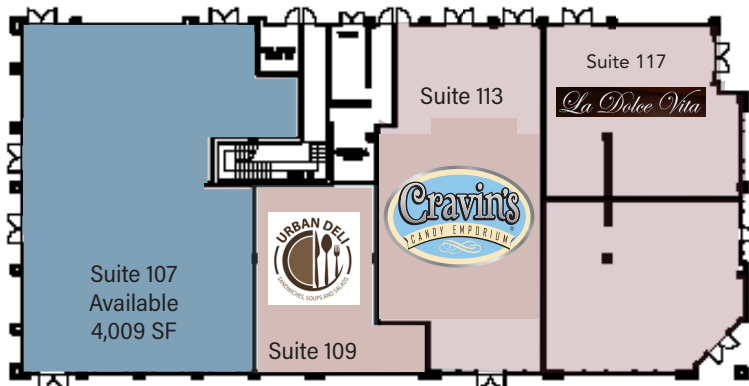
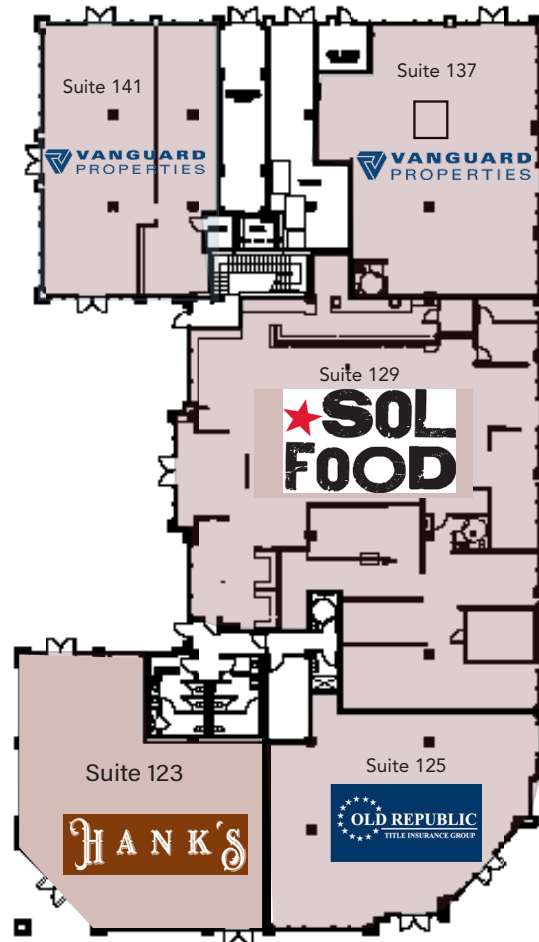
Jordan Lazor
jordan.lazor@am.jll.com
415.595.5102
RE License# 0201117

Laura Duffy
laura.duffy@am.jll.com
415.686.0255
RE License# 01922792

Glen Dowling
glen.dowling@am.jll.com
707.227.7800
RE License# 0890450

FOR LEASE | Theatre Square Office & Retail 140 Second Street | Petaluma, CA

Retail First Floor



LEGEND

- OCCUPIED
- VACANT

EXCLUSIVELY MARKETING BY THE DOWLING-BRACCO TEAM OF JLL | 707.421.2900



Tony Sarno
tony.sarno@am.jll.com
707.217.7196
RE License# 01430933

Jordan Lazor
jordan.lazor@am.jll.com
415.595.5102
RE License# 0201117

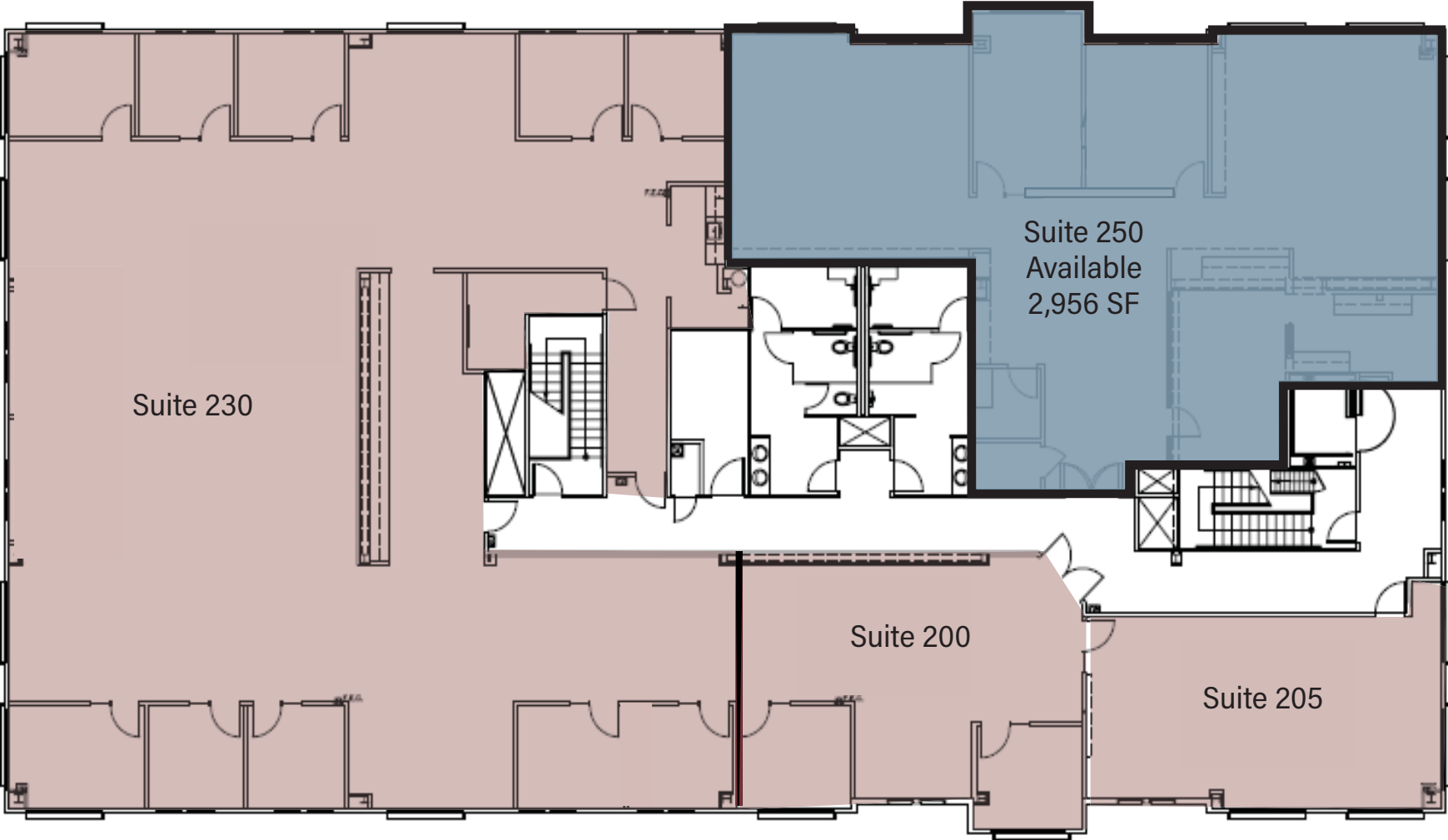
Laura Duffy
laura.duffy@am.jll.com
415.686.0255
RE License# 01922792

Glen Dowling
glen.dowling@am.jll.com
707.227.7800
RE License# 0890450

FOR LEASE | Theatre Square Office & Retail 140 Second Street | Petaluma, CA



Office Second Floor



EXCLUSIVELY MARKETING BY THE DOWLING-BRACCO TEAM OF JLL | 707.421.2900

Tony Sarno
tony.sarno@am.jll.com
707.217.7196
RE License# 01430933

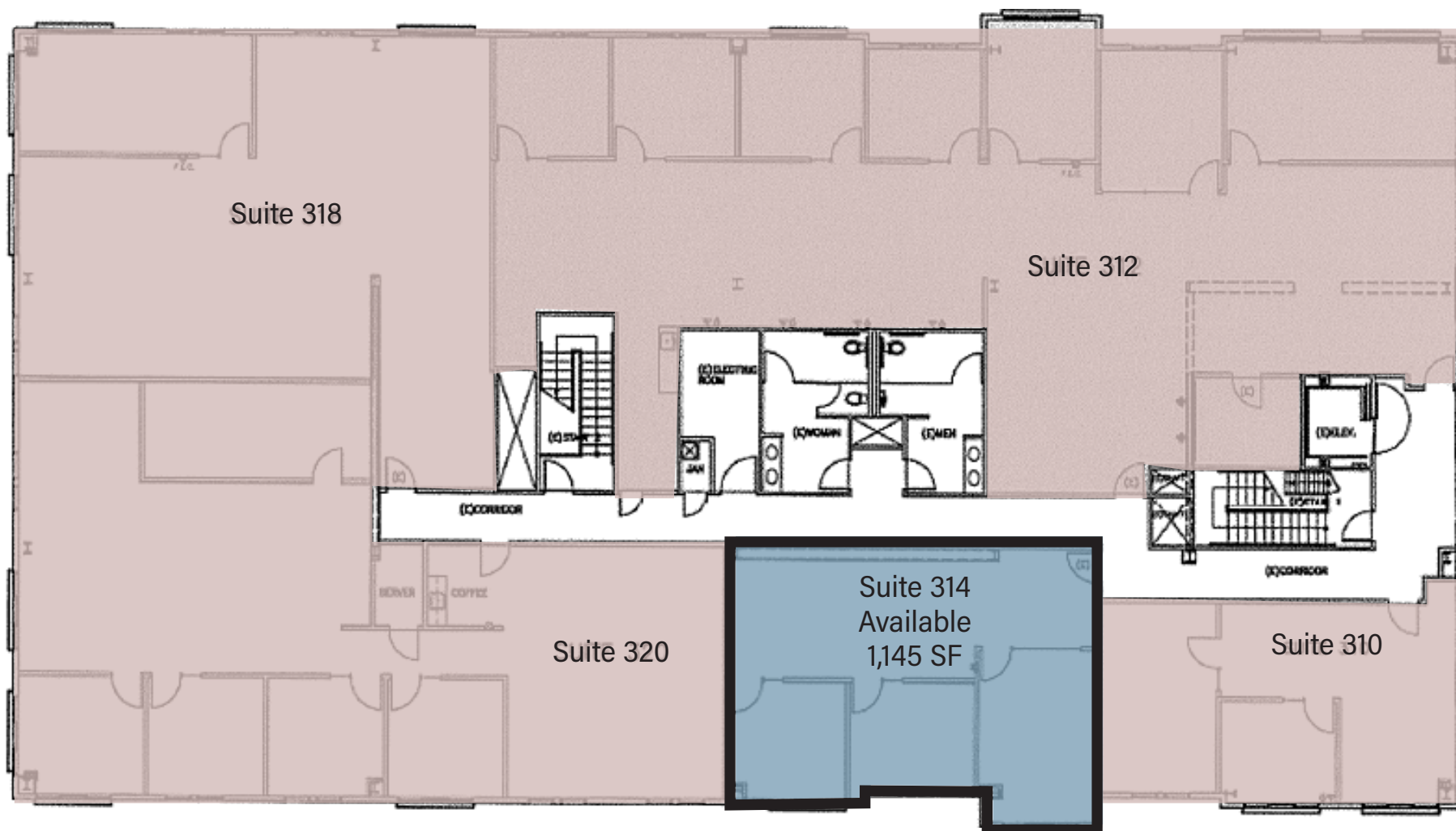
Jordan Lazor
jordan.lazor@am.jll.com
415.595.5102
RE License# 0201117

Laura Duffy
laura.duffy@am.jll.com
415.686.0255
RE License# 01922792

Glen Dowling
glen.dowling@am.jll.com
707.227.7800
RE License# 0890450

FOR LEASE | Theatre Square Office & Retail 140 Second Street | Petaluma, CA

Office Third Floor



EXCLUSIVELY MARKETING BY THE DOWLING-BRACCO TEAM OF JLL | 707.421.2900



Tony Sarno
tony.sarno@am.jll.com
707.217.7196
RE License# 01430933

Jordan Lazor
jordan.lazor@am.jll.com
415.595.5102
RE License# 0201117

Laura Duffy
laura.duffy@am.jll.com
415.686.0255
RE License# 01922792

Glen Dowling
glen.dowling@am.jll.com
707.227.7800
RE License# 0890450