

FOR LEASE **Santa Rosa**

Fountaingrove Executive Center



Santa Rosa's Most Prestigious Submarket



FOR LEASE **Santa Rosa** Fountaingrove Executive Center



TWO SUITES AVAILABLE OFFICE SPACE AVAILABLE

Type:
Class A Office

Address:
**3562 Round Barn Circle
Santa Rosa, CA**

Range of Available SF:
**Second Floor: 1,613
Third Floor: 5,249**

of Floors: Three (3)

DESCRIPTION

Suite 212 offers an open floor plan with an extensive glass-line. The space includes a full kitchen, 3 private offices, a conference room, & wet bar.

Suite 330 offers the perfect mix of private office and open space with an extensive glass line. The space is accessed directly off of the elevator for great tenant identity.

LOCATION

3562 Round Barn Circle is just ten minutes from Sonoma County Airport. The center's close proximity to Highway 101 means tenants can enjoy the nearby Coddington Mall, Fountainrove Golf and Athletic Club, Wells Fargo Center for the Arts as well as a wide selection of retail, restaurants and other services.

AMENITIES

- Expansive floor to ceiling glass line
- High-speed technology access
- 10' finished ceiling height
- Restrooms with showers and lockers
- Space planning flexibility
- High quality building standard finishes

KEY TENANTS

Morgan Stanley
Pisenti & Brinker
NBC Services



EXCLUSIVELY MARKETING BY:
Shawn Johnson
DRE#: 00835502

Danny Jones
DRE#: 01255048

FOR LEASE Santa Rosa Fountaingrove Executive Center



EXCLUSIVELY MARKETED BY:
Shawn Johnson
DRE#: 00835502

Danny Jones
DRE#: 01255048

FOR LEASE **Santa Rosa**
Fountaingrove Executive Center

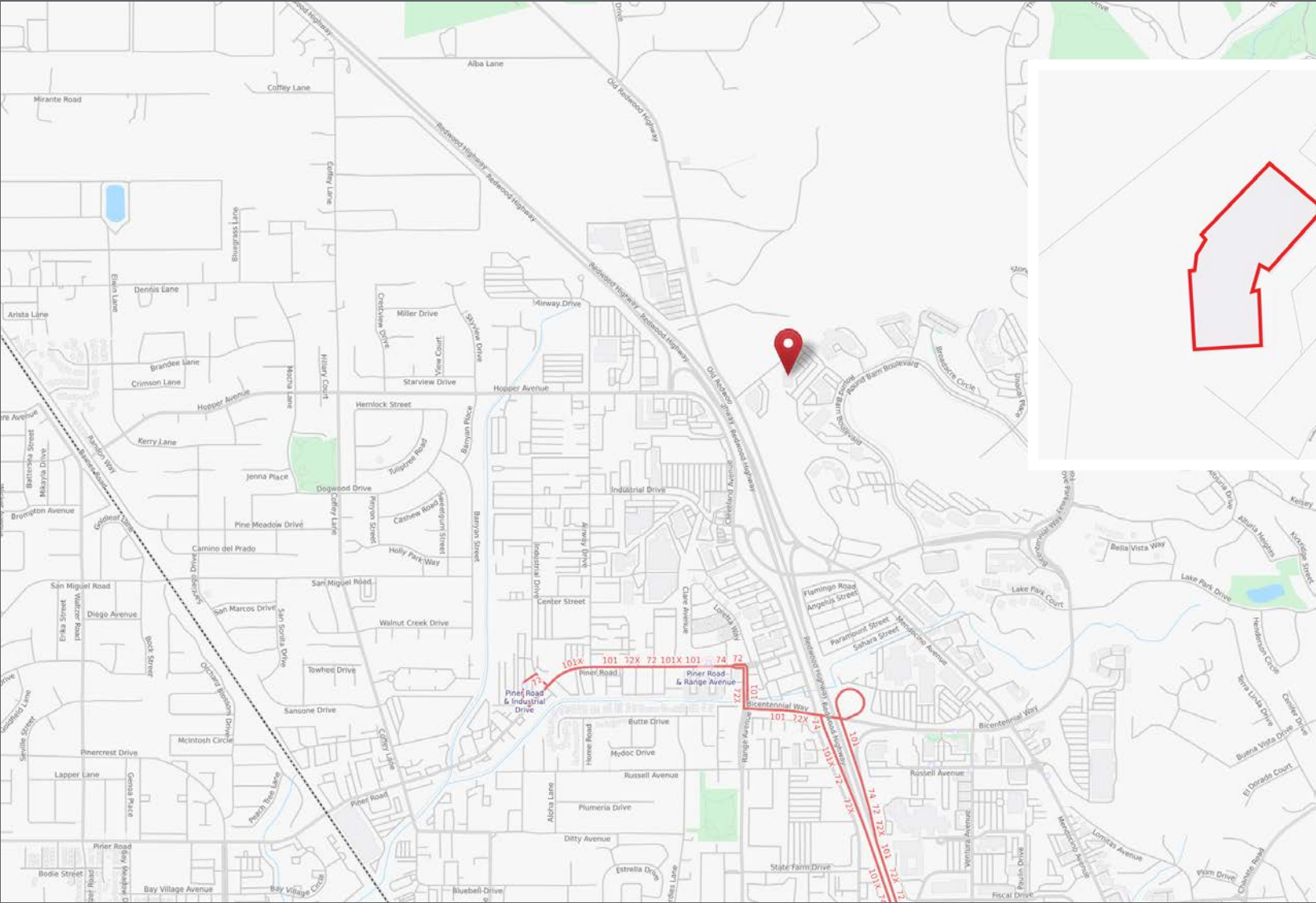


EXCLUSIVELY MARKETING BY:
Shawn Johnson
DRE#: 00835502

Danny Jones
DRE#: 01255048

FOR LEASE **Santa Rosa**

Fountaingrove Executive Center



EXCLUSIVELY MARKETING BY:

Shawn Johnson
DRE#: 00835502

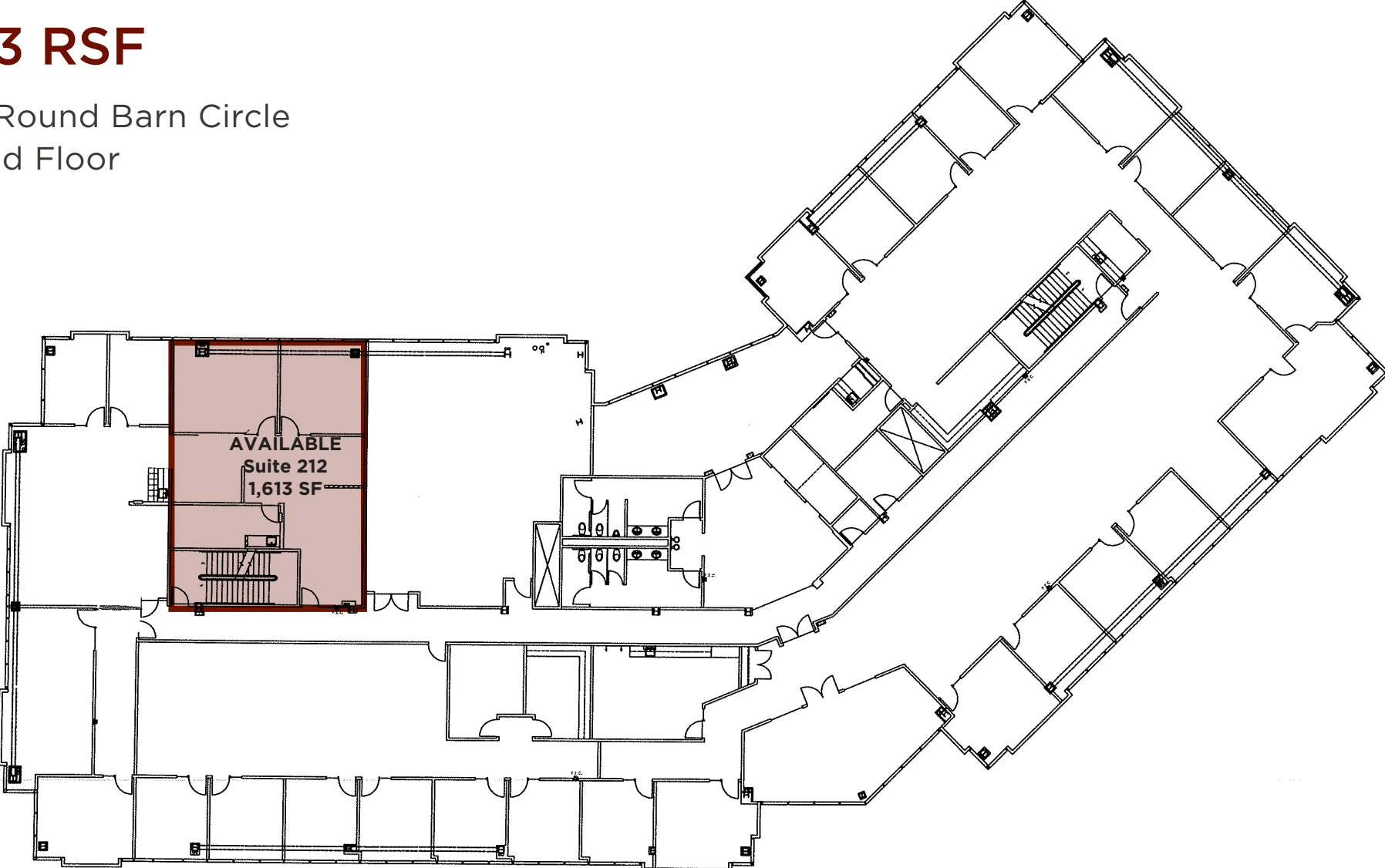
Danny Jones
DRE#: 01255048

FOR LEASE **Santa Rosa**
Fountaingrove Executive Center



1,613 RSF

3562 Round Barn Circle
Second Floor



EXCLUSIVELY MARKETING BY:
Shawn Johnson
DRE#: 00835502

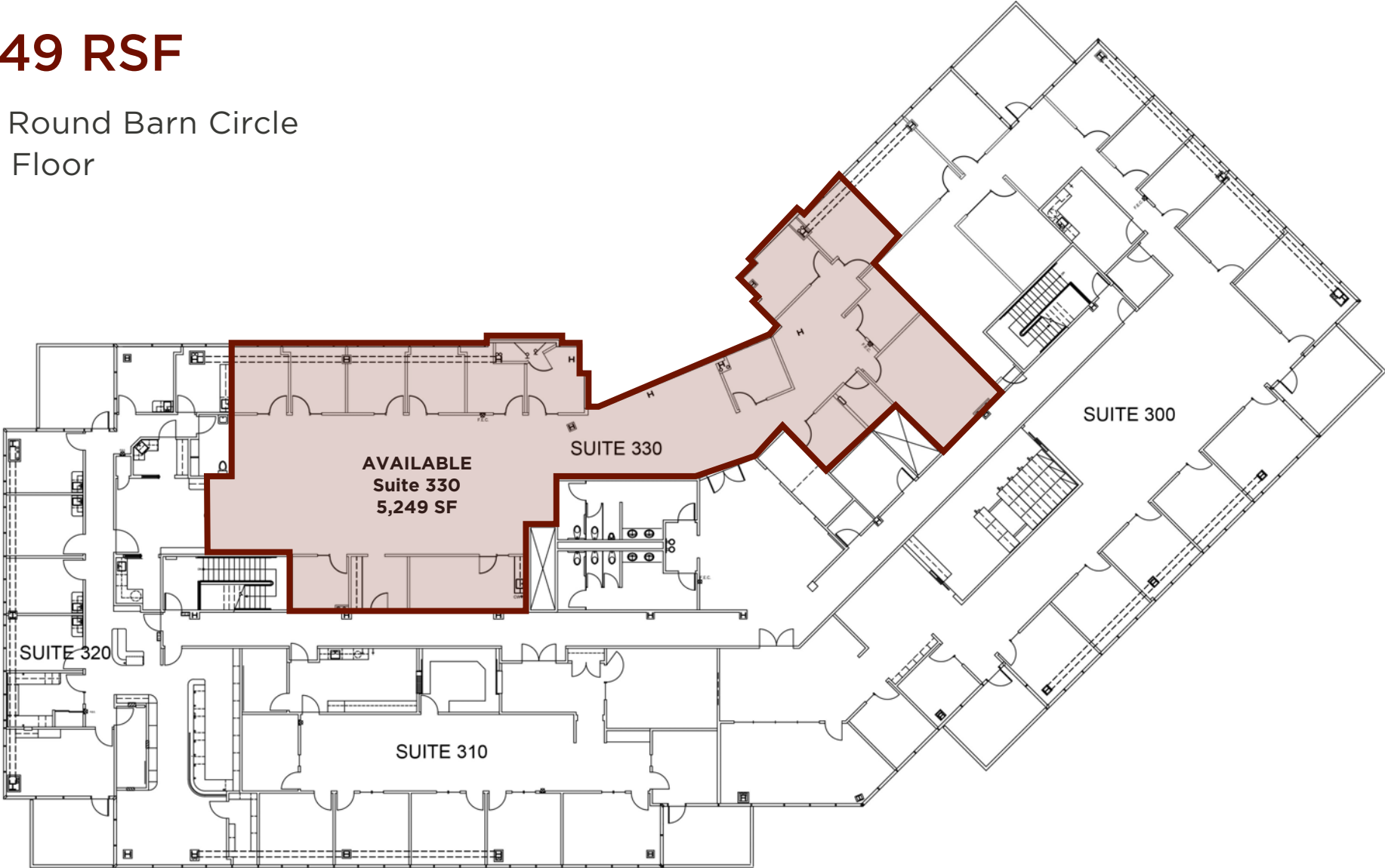
Danny Jones
DRE#: 01255048

FOR LEASE **Santa Rosa**
Fountaingrove Executive Center



5,249 RSF

3562 Round Barn Circle
Third Floor



EXCLUSIVELY MARKETED BY:
Shawn Johnson
DRE#: 00835502

Danny Jones
DRE#: 01255048