

FOR LEASE

Waterfront Office Space



View
Virtual
Tour



±2,500 SF Class “A” Office Space Available in Downtown Petaluma



Vibrant Office Space in the Theatre District overlooking the Petaluma River

DESCRIPTION

- Class 'A' building with high-quality finishes throughout
- Premier downtown location, in the center of it all
- Short walking distance to all downtown amenities, restaurants and shopping
- Abundant and convenient parking nearby
- Professional and responsive property management
- Men's and women's shower/lockers
- Petaluma River and mountain views

Type:
Office

Address:
201 First Street
Petaluma, CA

Total SF:
50,755



EXCLUSIVELY MARKETED BY THE DOWLING-BRACCO TEAM OF JLL | 707.421.2900

Tony Sarno
707.217.7196
RE License# 01430933

Jordan Lazor
415.595.5102
RE License# 0201117

Laura Duffy
415.686.0255
RE License# 01922792

Glen Dowling
707.227.7800
RE License# 0890450

Jones Lang LaSalle Brokerage, Inc.
Real Estate License # 01856260

FOR LEASE Petaluma Waterfront Office



EXCLUSIVELY MARKETING BY THE DOWLING-BRACCO TEAM OF JLL | 707.421.2900

Tony Sarno
707.217.7196
RE License# 01430933

Jordan Lazor
415.595.5102
RE License# 0201117

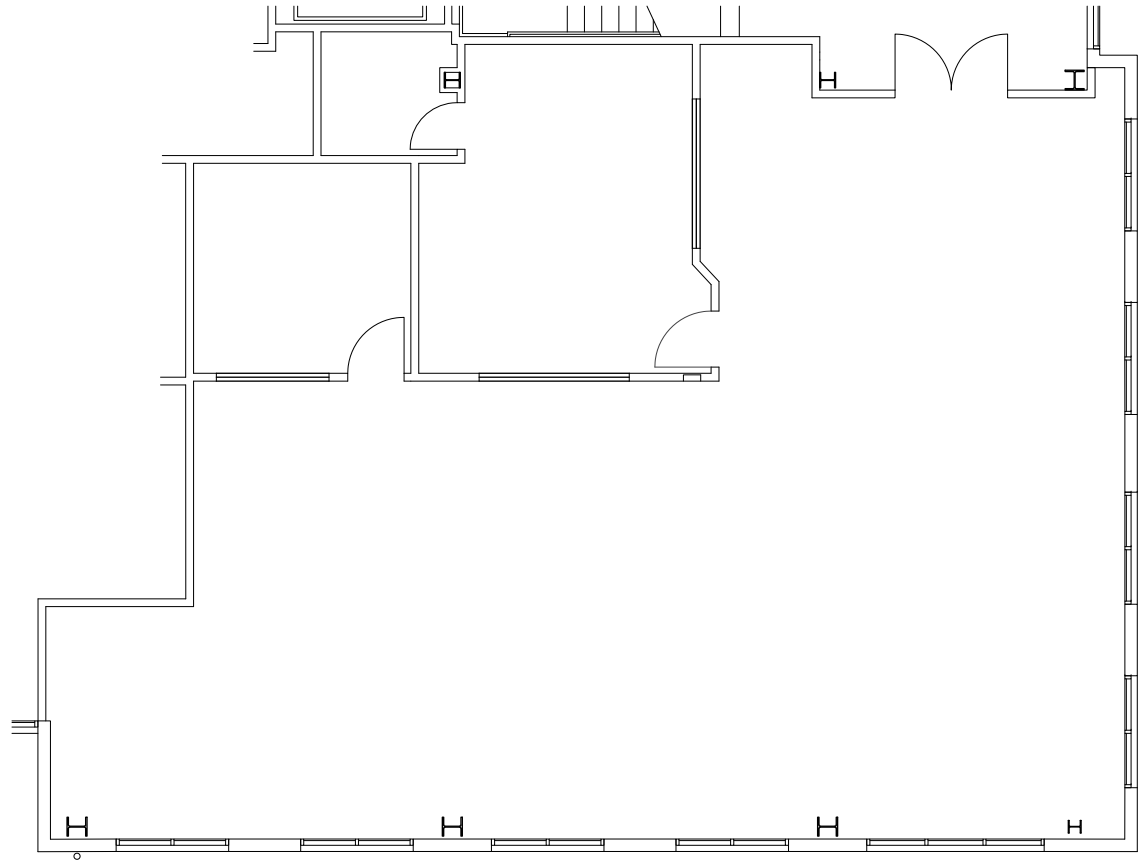
Laura Duffy
415.686.0255
RE License# 01922792

Glen Dowling
707.227.7800
RE License# 0890450

2,500 RSF
Suite 101

Space Highlights

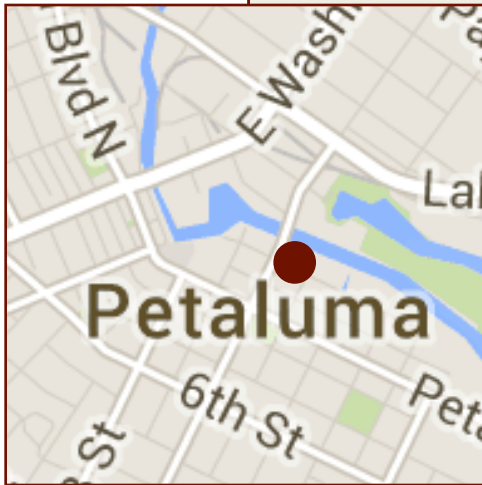
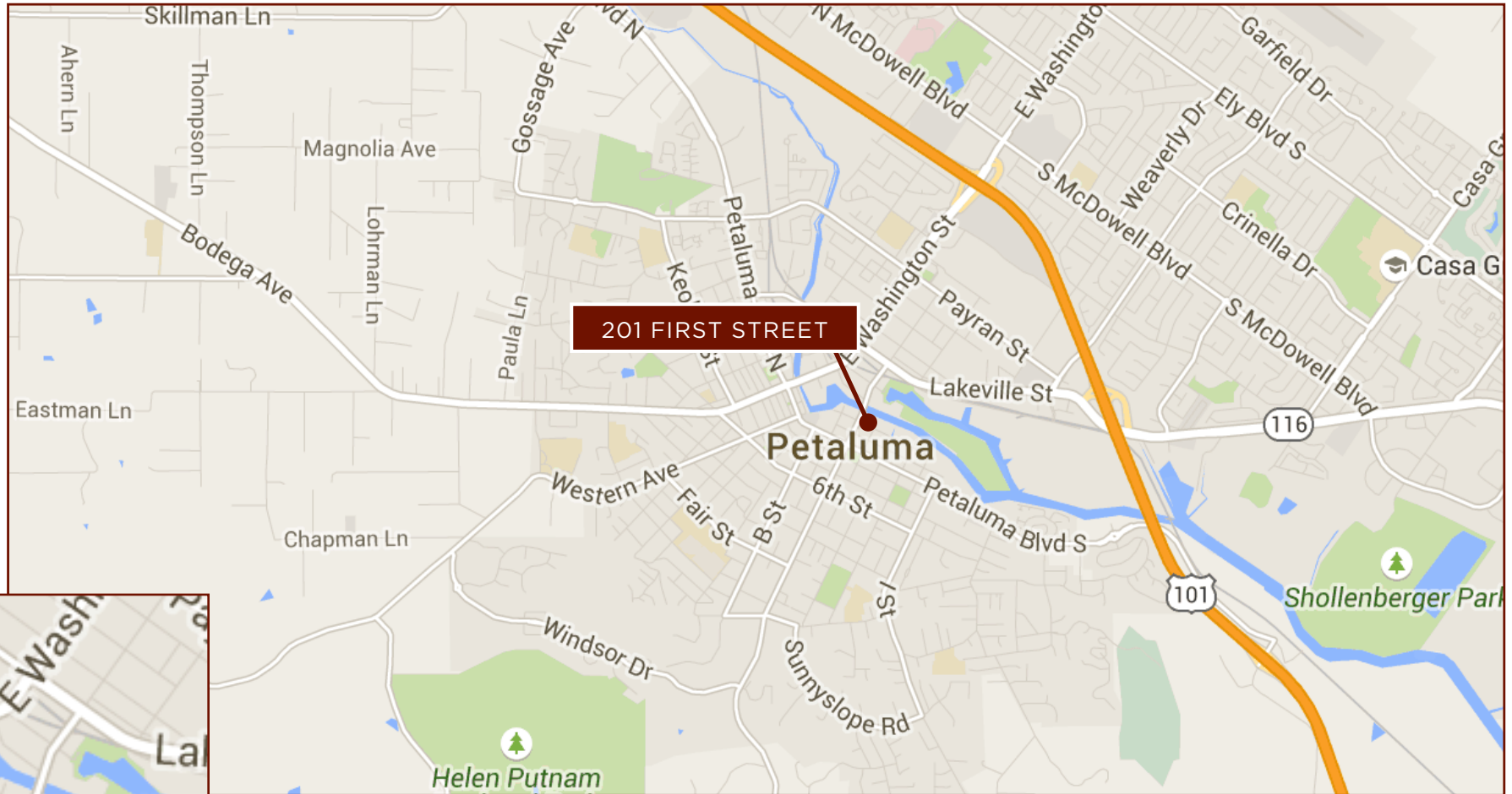
- Modern, creative office space
- Open and exposed ceilings throughout
- Extensive glass-line



View
Virtual
Tour

FOR LEASE **Petaluma**

Waterfront Office Location Map



EXCLUSIVELY MARKETING BY THE DOWLING-BRACCO TEAM OF JLL | 707.421.2900

Tony Sarno
707.217.7196
RE License# 01430933

Jordan Lazor
415.595.5102
RE License# 0201117

Laura Duffy
415.686.0255
RE License# 01922792

Glen Dowling
707.227.7800
RE License# 0890450

