

# DOWNTOWN OFFICE FOR LEASE

**200 South Virginia**  
Reno, NV 89501

**Class A Office in Prime  
Downtown Location**

**SPACE AVAILABLE**  
**482 SF - 6,911 SF**



**View Drone Video**



**DOMINIC BRUNETTI, CCIM**  
**PRINCIPAL**  
775.850.3109 **OFFICE**  
dbrunetti@dicksoncg.com  
S.58419

**SCOTT SHANKS, SIOR**  
**PRINCIPAL**  
775.850.3102 **OFFICE**  
sshanks@dicksoncg.com  
S.66593

**PATRICK RIGGS**  
775.220.4957 **CELL**  
priggs@dicksoncg.com  
S.180878

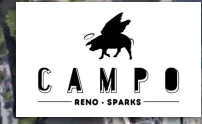
# LOCATION HIGHLIGHTS

- Strategic Downtown location
- Designated surface parking for customers
- Parking ratio of 5 spaces per 1,000 SF
- Exterior building signage available
- Secure, ample covered parking for your employees and clients
- On-site security maintains strict oversight
- Less than five minutes to both I-80 and Hwy 395
- Dedicated TelCo space available
- Dogs are allowed on premises



Walk Score - **95**  
**WALKER'S PARADISE**





west elm



LAKE ST



E SECOND ST



# DOWNTOWN AREA MAP



- Reno Aces Ballpark
- Starbucks
- Pine State Biscuits
- Sizzle Pie
- Patagonia
- La Famiglia
- Pioneer Center for Performing Arts
- West Elm
- Renaissance Reno Downtown Hotel by Marriott
- Old Granite Street Eatery
- Nevada Museum of Art
- The Depot
- Bertha Miranda's
- Taste of Chicago
- Mellow Fellow Gastropub





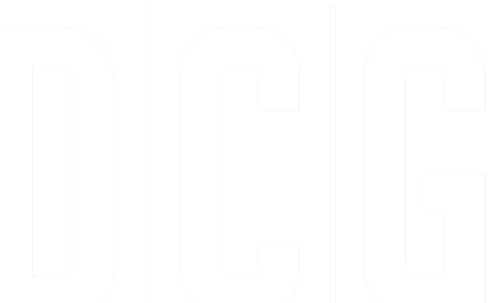
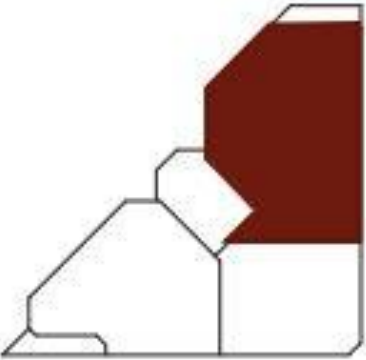
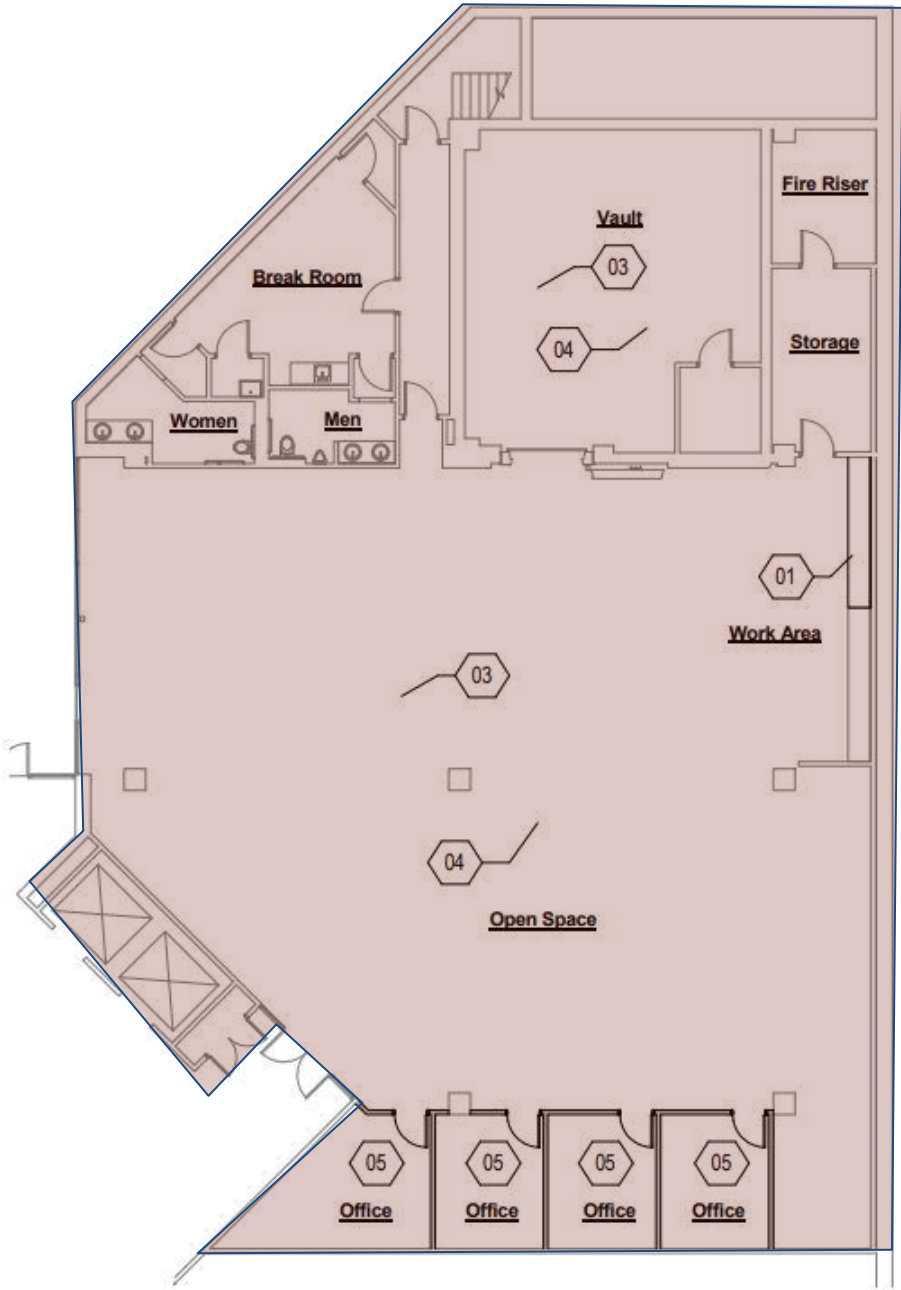
 **BASIN STREET**  
PROPERTIES

 **DCG**



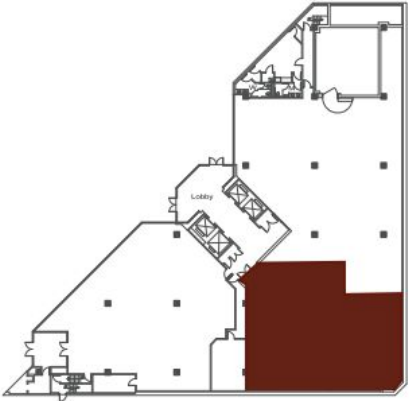
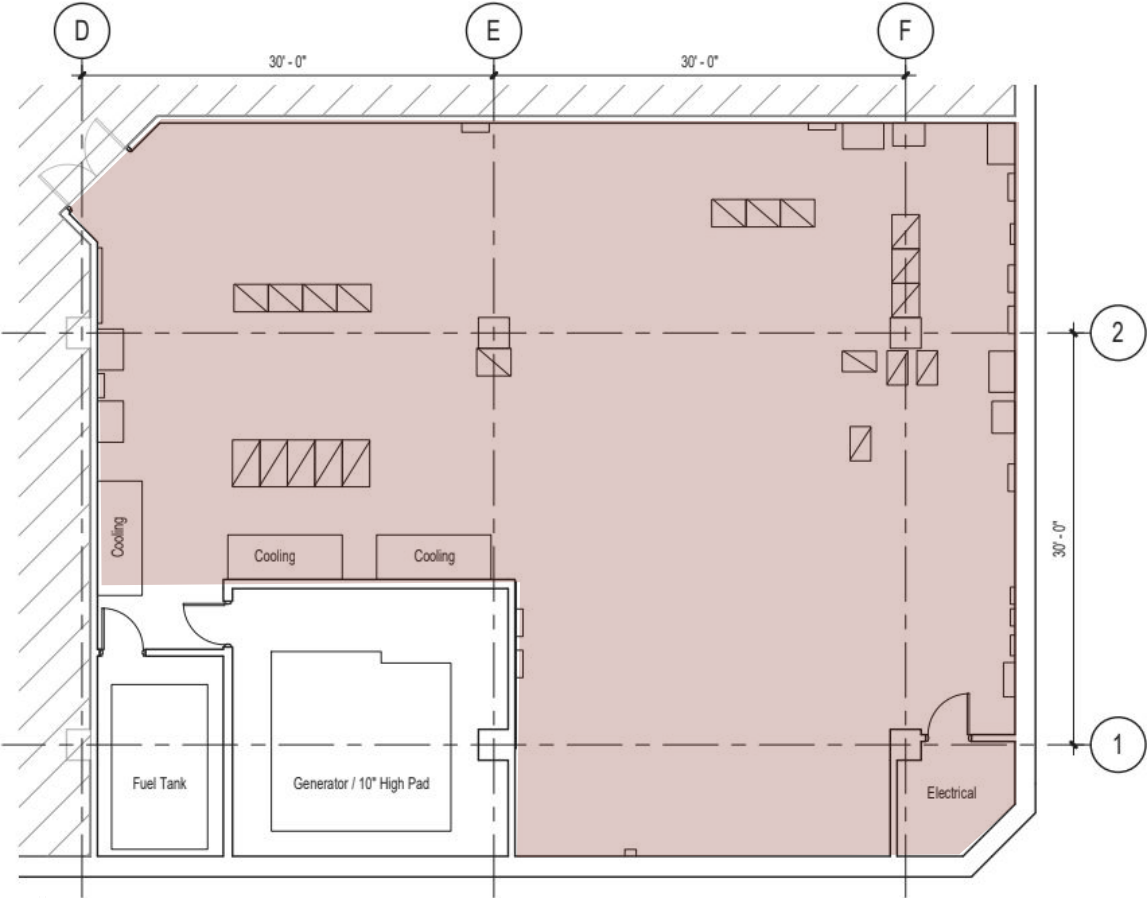
# FLOOR PLAN

Suite 100 | 6,911 sf



# FLOOR PLAN

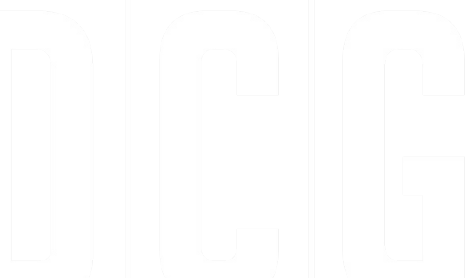
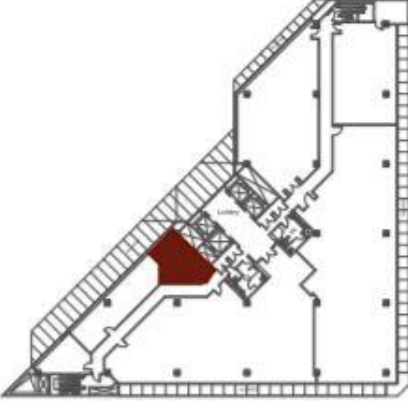
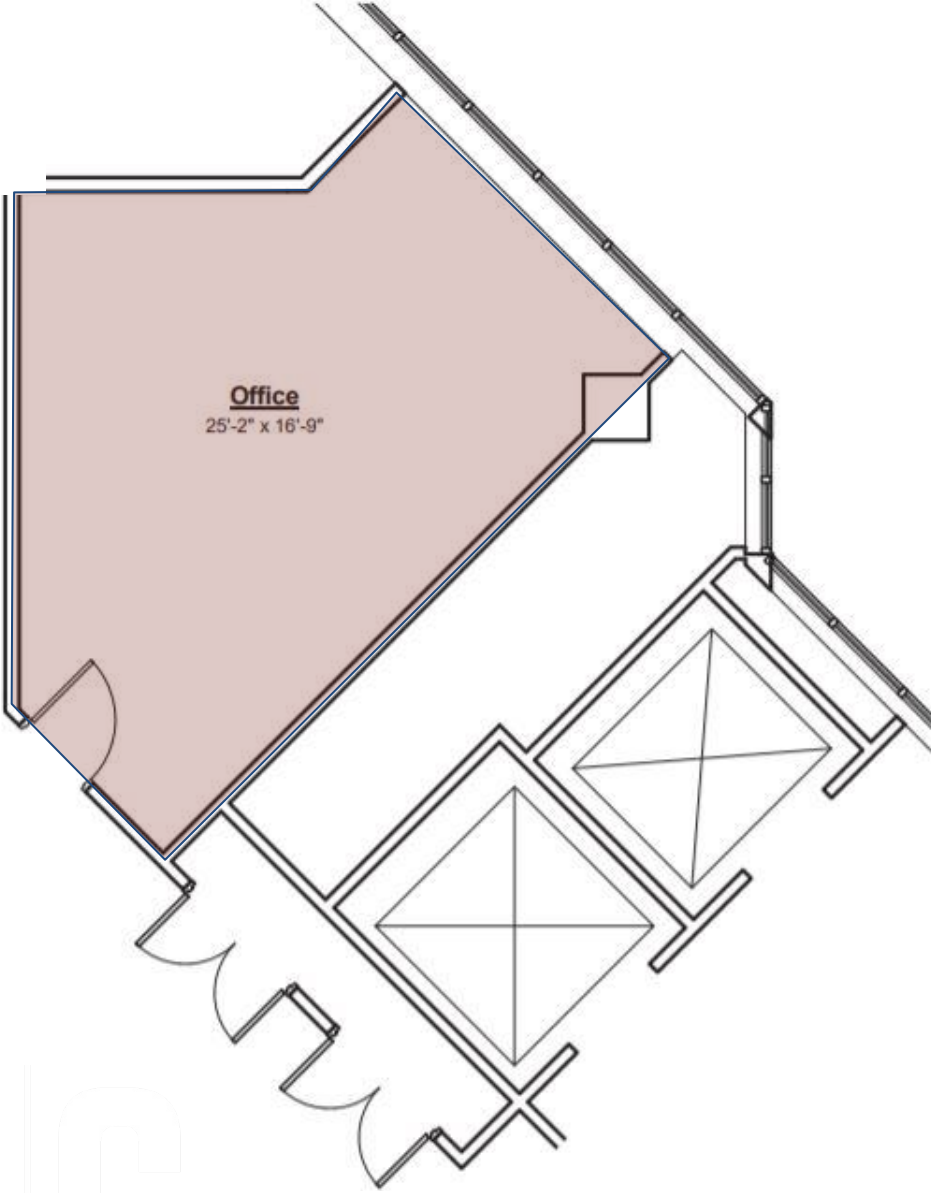
Suite 110 | 3,949 sf



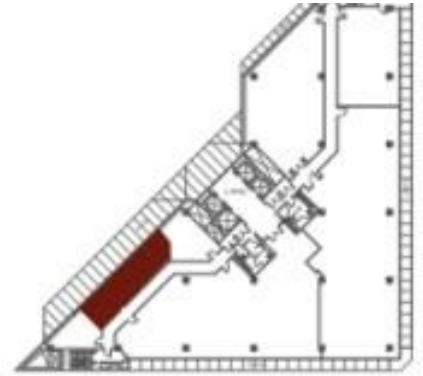
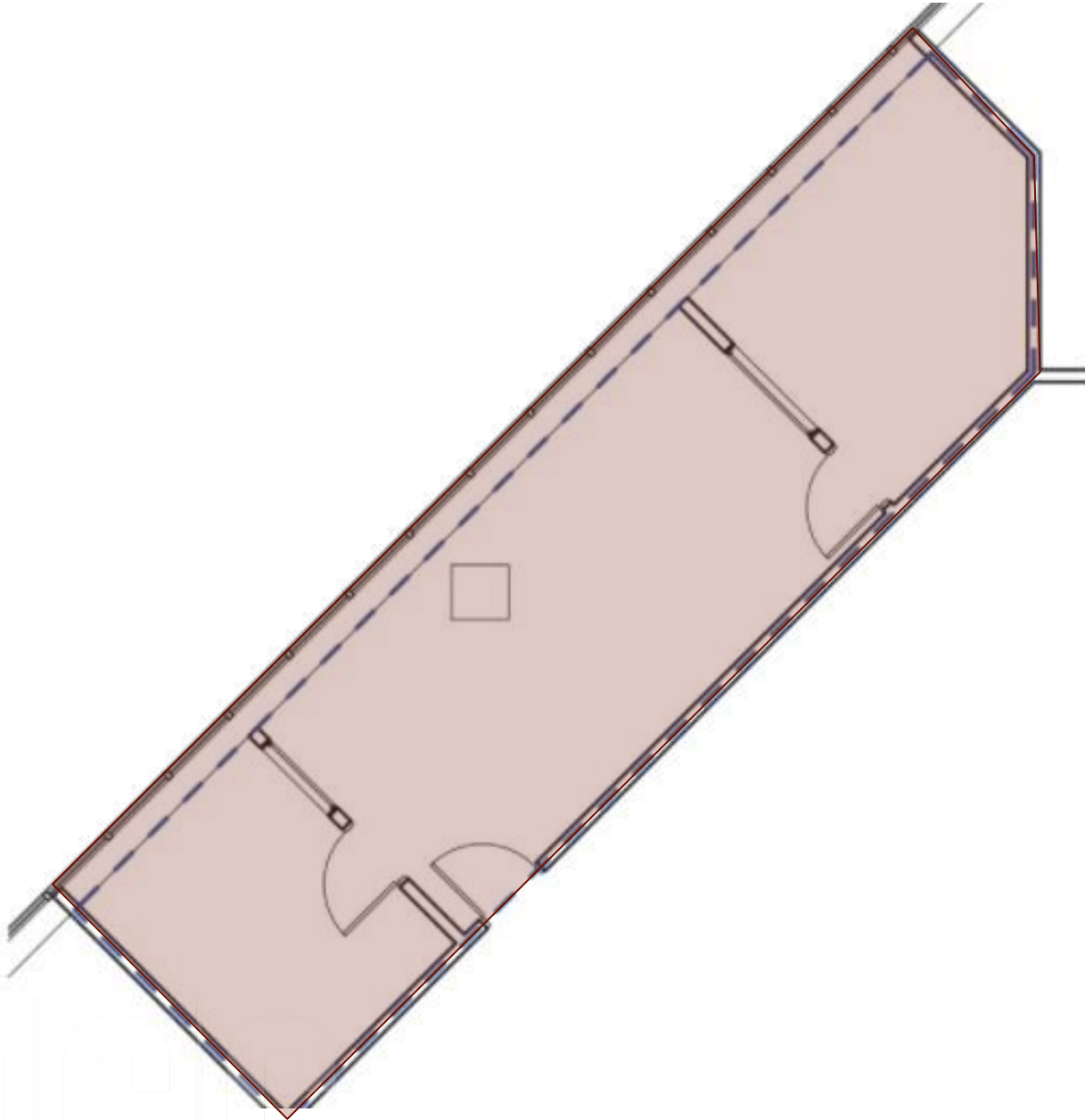


# FLOOR PLAN

Suite 250 | 482 sf



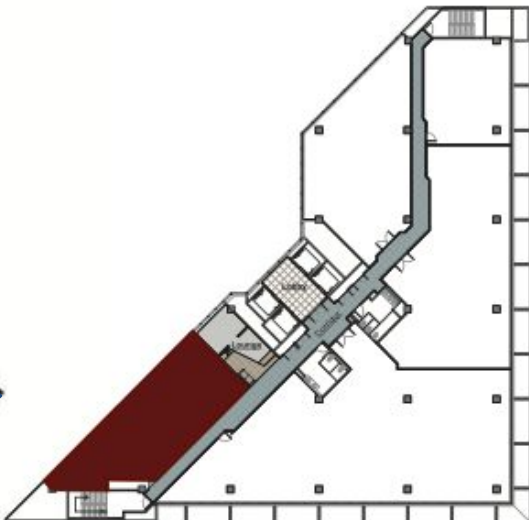
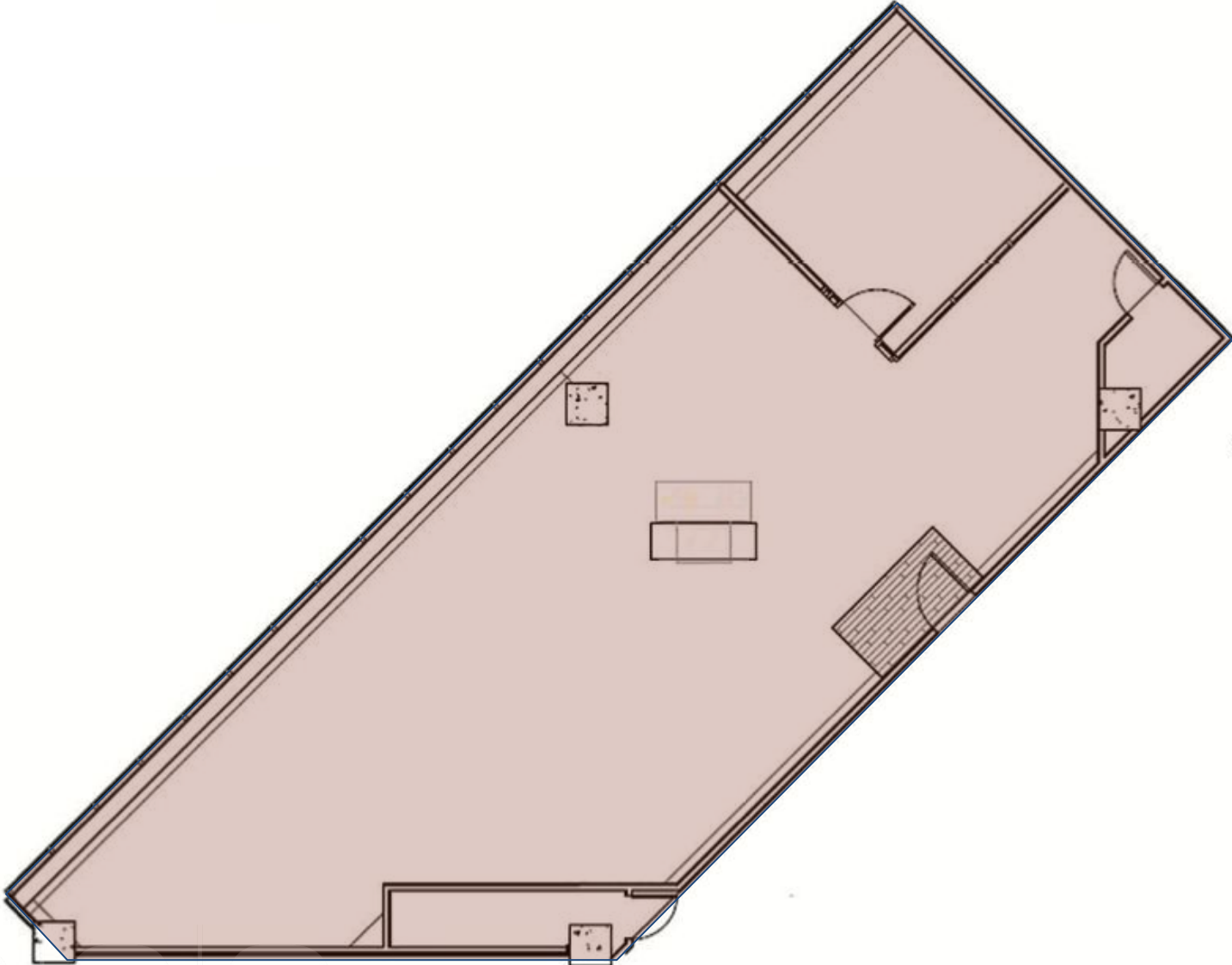
**FLOOR PLAN**  
Suite 240 | 822 sf



DEVELOPERS

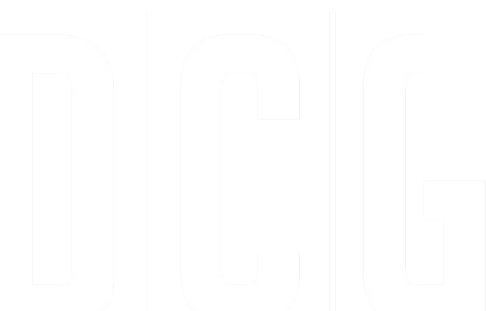
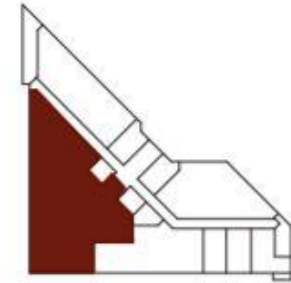
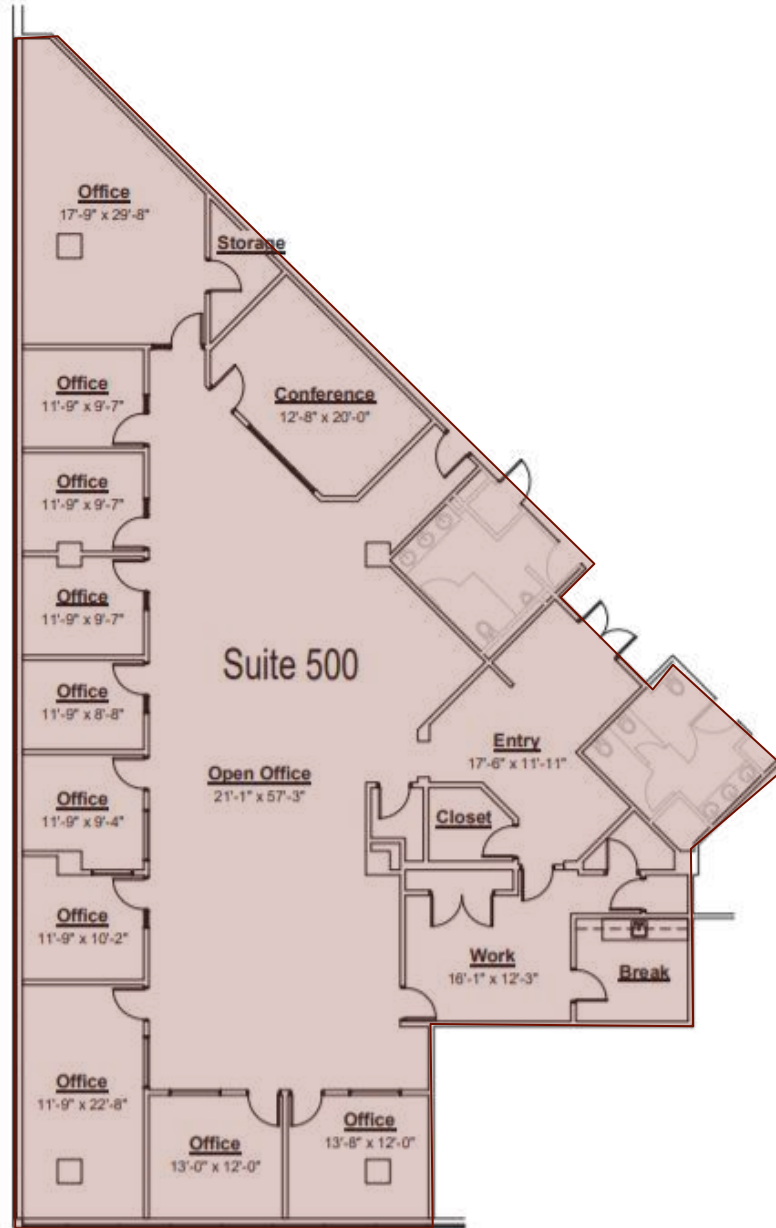
**FLOOR PLAN**

Suite 301 | 1,858 sf



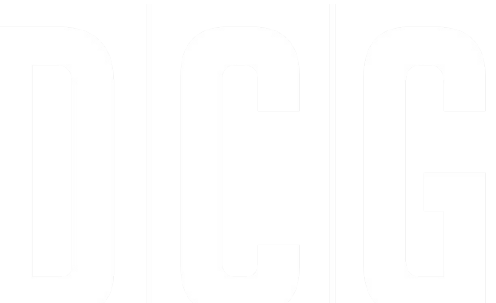
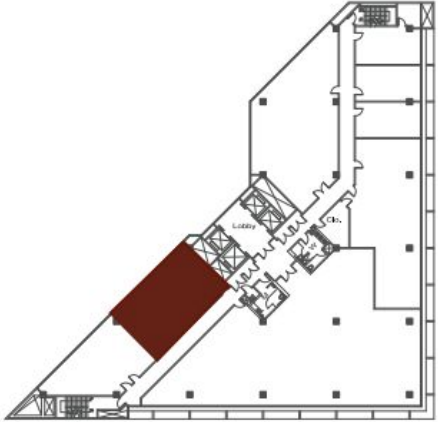
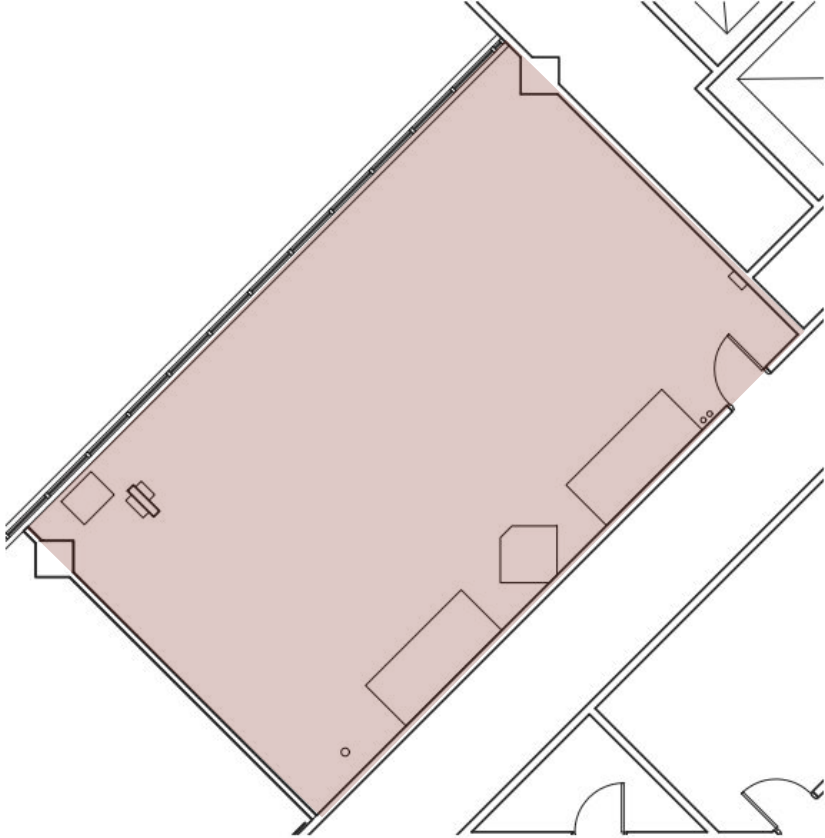
# FLOOR PLAN

Suite 500 | 5,500 sf

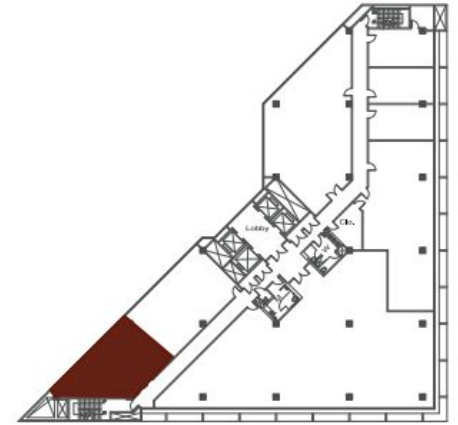
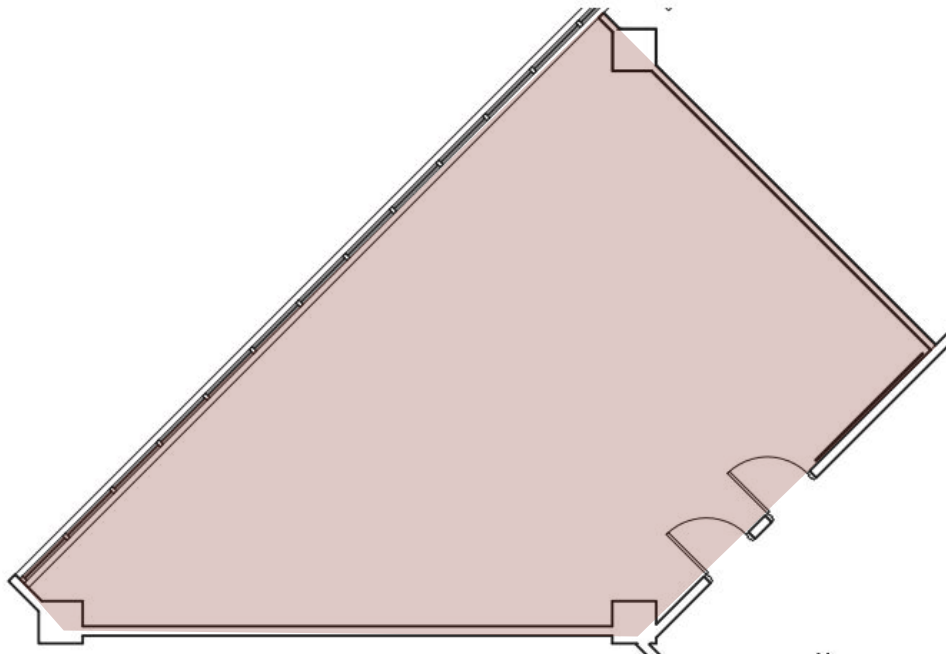


**FLOOR PLAN**

Suite 520 | 1,298 sf



**FLOOR PLAN**  
Suite 530 | 993 sf



# FLOOR PLAN

Suite 750 | 2,017 sf

