

**FOR LEASE**

Class A Office Space in South Natomas | Sacramento, CA

**GATEWAY OAKS**

**I-IV**

  
**VIDEO  
TOUR**

**THE VERSATILE OFFICE EXPERIENCE PROMOTING CULTURE, COLLABORATION AND WELLNESS**

**TONY WHITTAKER**

+1 916 492 6914

TONY.WHITTAKER@CBRE.COM

LIC. 01780828

**JASON GOFF**

+1 916 446 8222

JASON.GOFF@CBRE.COM

LIC. 01205230

**NELLIE CRUZ**

+1 916 492 6915

NELLIE.CRUZ@CBRE.COM

LIC. 02086140





# BUILDING PARK VISUAL OVERVIEW



GO-I

2150 RIVER PLAZA DR



GO-II

2151 RIVER PLAZA DR



GO-III

2295 GATEWAY OAKS DR



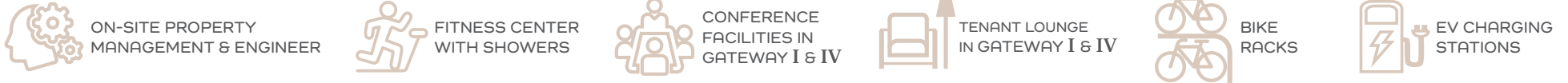
GO-IV

2520 VENTURE OAKS WY

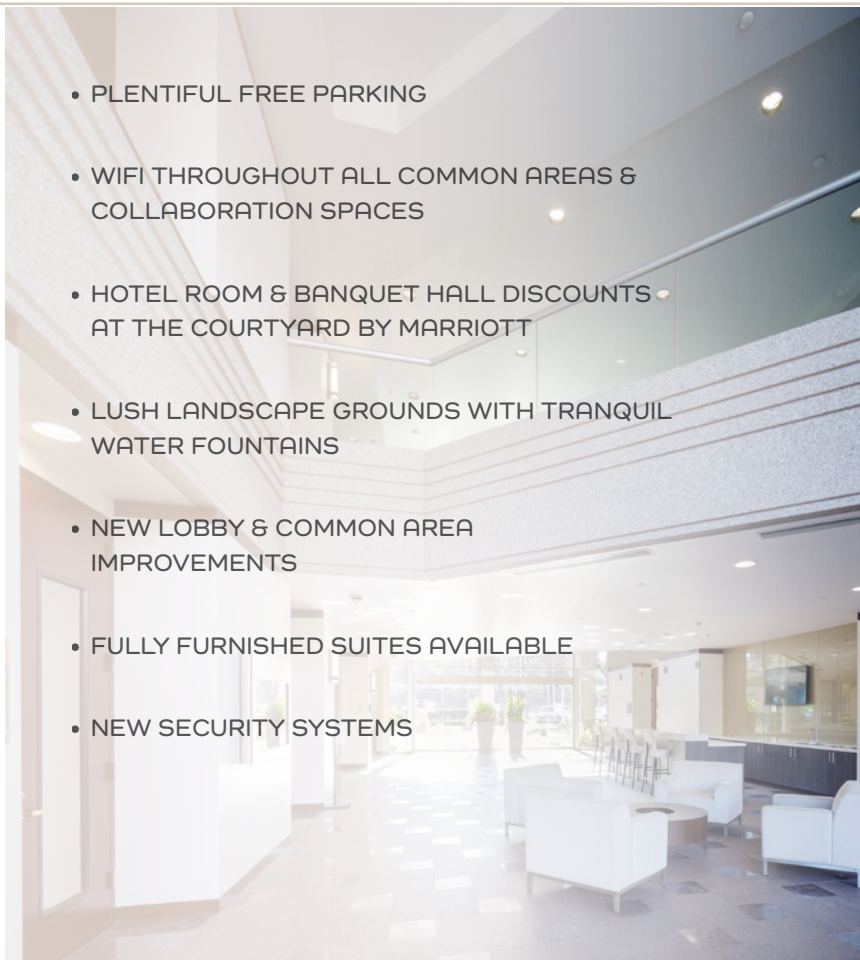




# PROPERTY AMENITIES



IN ADDITION TO THE PROPERTY AMENITIES, BELOW ARE THE SERVICES AND EXPERIENCES OFFERED TO TENANTS:







GO-II



GO-III



GO-I



GO-IV





# LOCATION OVERVIEW - NEARBY AMENITIES



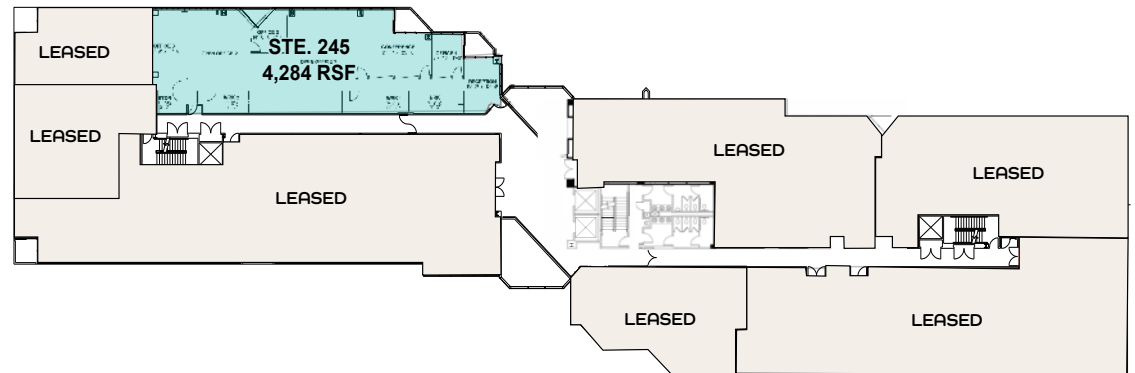
## BUILDING AVAILABILITY

 Click Available Space to View Enlarged Floor Plan

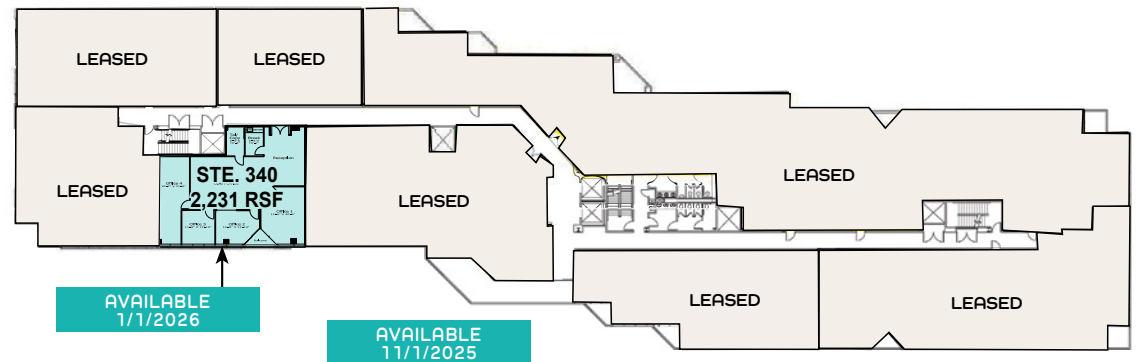
**GATEWAY OAKS I**  
**2150 RIVER PLAZA DRIVE**

- » Suite 245: 4,284 RSF
- » Suite 340: 2,231 RSF
- » Suite 420: 1,805 RSF

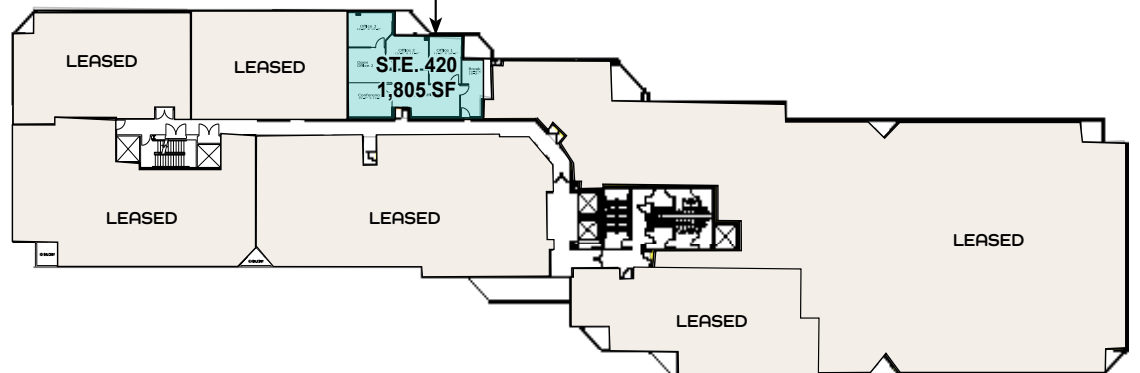
## 2ND FLOOR



## 3RD FLOOR



## 4TH FLOOR



NOT TO SCALE. ALL MEASUREMENTS  
ARE APPROXIMATE.

AVAILABLE LEASED

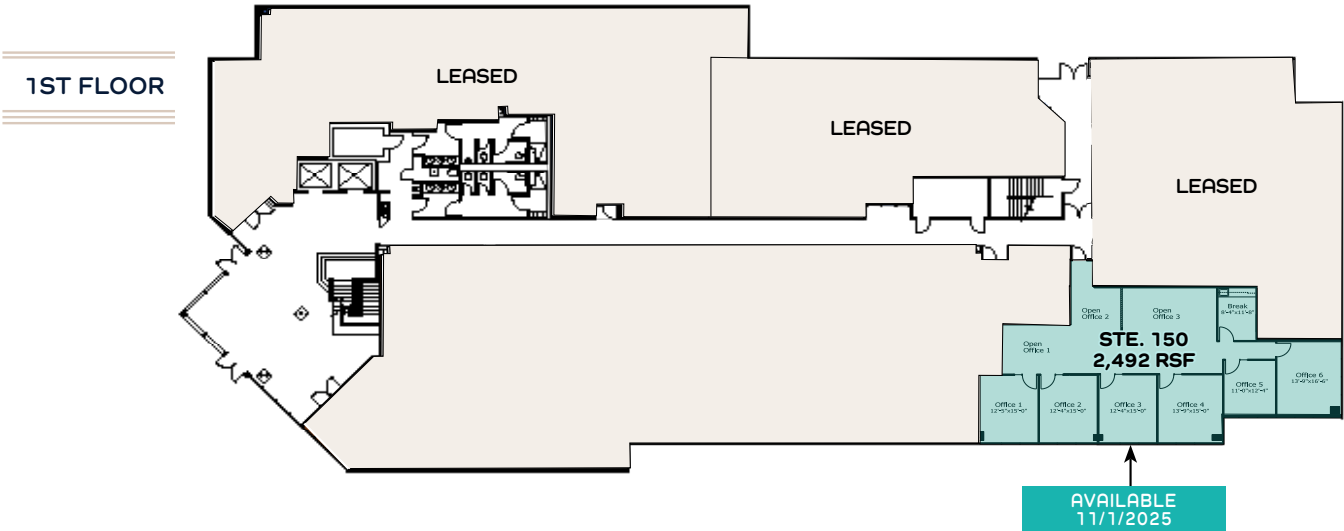


# BUILDING AVAILABILITY

 Click Available Space to View Enlarged Floor Plan

## GATEWAY OAKS II 2151 RIVER PARK PLAZA

» Suite 150: 2,492 SF



NOT TO SCALE. ALL MEASUREMENTS  
ARE APPROXIMATE.

 AVAILABLE

 LEASED

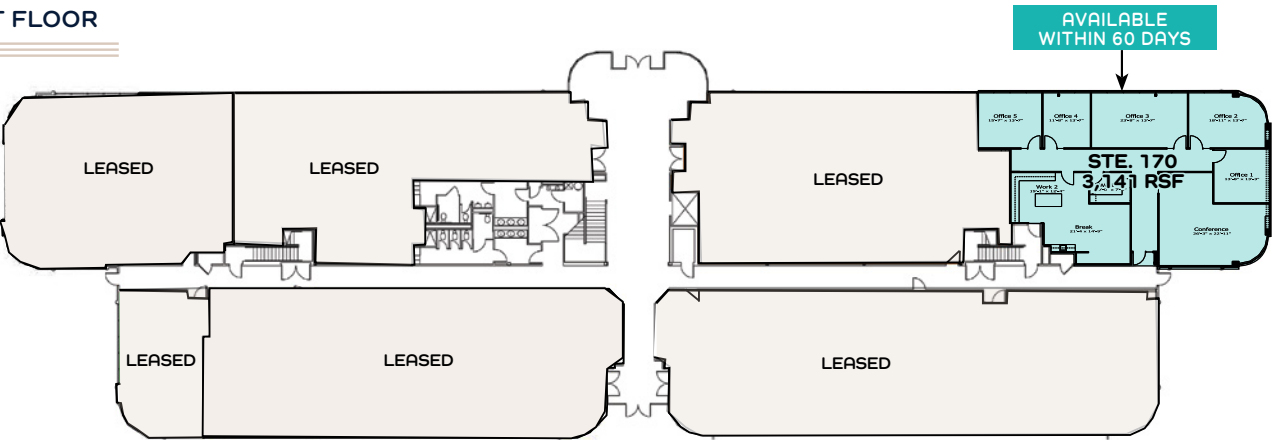
# BUILDING AVAILABILITY

 Click Available Space to View Enlarged Floor Plan

## GATEWAY OAKS III 2295 GATEWAY OAKS DRIVE

» Suite 170: 3,171 RSF

1ST FLOOR



NOT TO SCALE. ALL MEASUREMENTS  
ARE APPROXIMATE.

AVAILABLE

LEASED



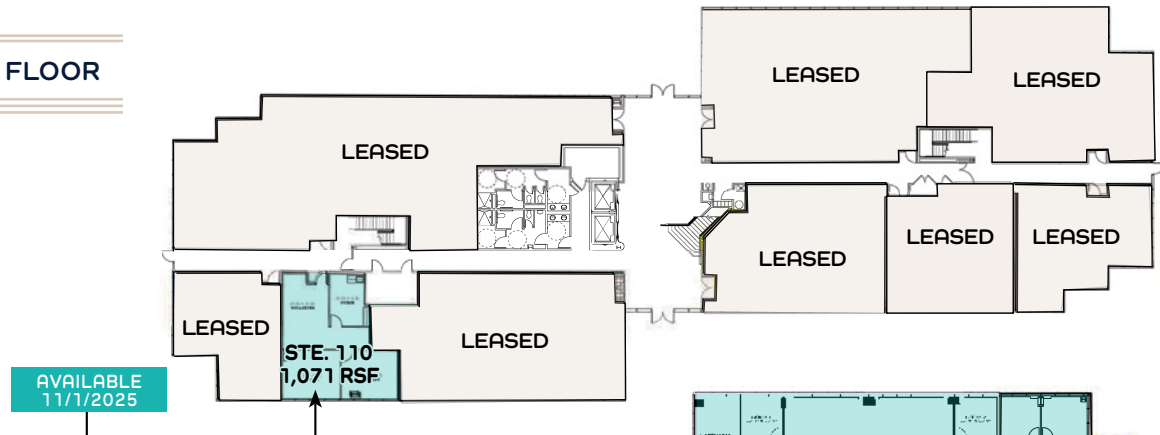
# BUILDING AVAILABILITY

 Click Available Space to View Enlarged Floor Plan

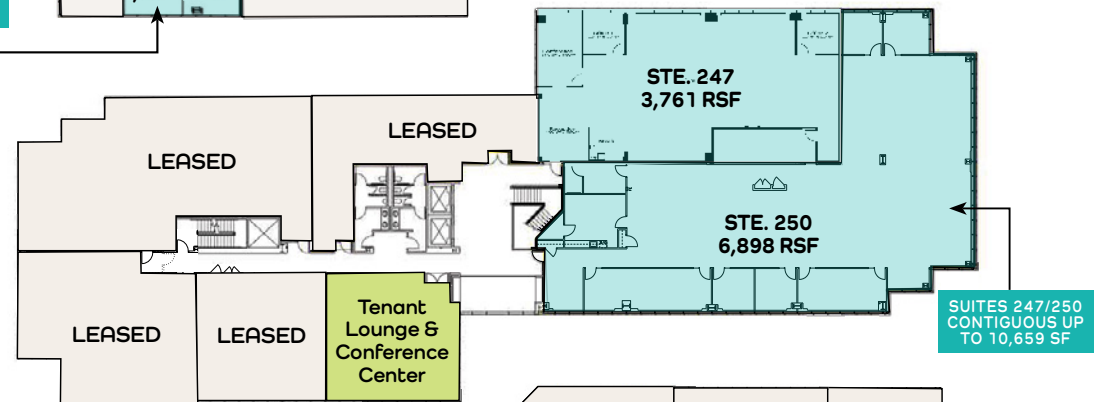
## GATEWAY OAKS IV 2520 VENTURE OAKS WAY

- » Suite 110: 1,071 RSF
- » Suite 247: 3,761-10,659 RSF
- » Suite 250: 6,898-10,659 RSF
- » Suite 440: 2,594 RSF

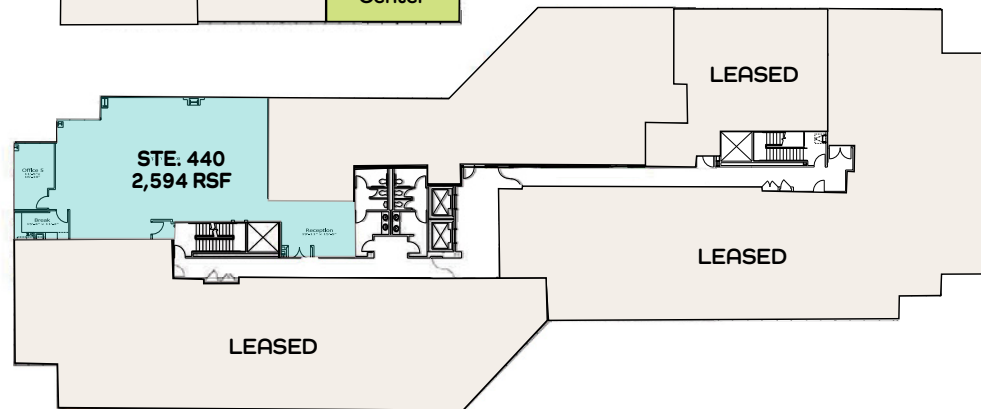
### 1ST FLOOR



### 2ND FLOOR



### 4TH FLOOR



NOT TO SCALE. ALL MEASUREMENTS  
ARE APPROXIMATE.

AVAILABLE LEASED



**FOR LEASE**

Class A Office Space in South Natomas | Sacramento, CA

**GATEWAY OAKS**

**I-IV**

**EXCLUSIVE LISTING AGENTS:**

**TONY WHITTAKER**

+1 916 492 6914

TONY.WHITTAKER@CBRE.COM

LIC. 01780828

**JASON GOFF**

+1 916 446 8222

JASON.GOFF@CBRE.COM

LIC. 01205230

**NELLIE CRUZ**

+1 916 492 6915

NELLIE.CRUZ@CBRE.COM

LIC. 02086140

