

**FOR LEASE**

2150 River Plaza Drive | Sacramento, CA

# GATEWAY OAKS

# I

  
**VIDEO  
TOUR**

**THE VERSATILE OFFICE EXPERIENCE PROMOTING CULTURE, COLLABORATION AND WELLNESS**

**TONY WHITTAKER**

+1 916 492 6914

TONY.WHITTAKER@CBRE.COM

LIC. 01780828

**JASON GOFF**

+1 916 446 8222

JASON.GOFF@CBRE.COM

LIC. 01205230

**NELLIE CRUZ**

+1 916 492 6915

NELLIE.CRUZ@CBRE.COM

LIC. 02086140

 **BASIN STREET  
PROPERTIES** EST. 1974

**CBRE**

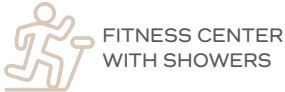
# BUILDING PARK VISUAL OVERVIEW



# PROPERTY AMENITIES



ON-SITE PROPERTY MANAGEMENT & ENGINEER



FITNESS CENTER WITH SHOWERS



CONFERENCE FACILITIES IN GATEWAY I & IV



TENANT LOUNGE IN GATEWAY I & IV



BIKE RACKS



EV CHARGING STATIONS

## IN ADDITION TO THE PROPERTY AMENITIES, BELOW ARE THE SERVICES AND EXPERIENCES OFFERED TO TENANTS:

- PLENTIFUL FREE PARKING
- WIFI THROUGHOUT ALL COMMON AREAS & COLLABORATION SPACES
- HOTEL ROOM & BANQUET HALL DISCOUNTS AT THE COURTYARD BY MARRIOTT
- LUSH LANDSCAPE GROUNDS WITH TRANQUIL WATER FOUNTAINS
- NEW LOBBY & COMMON AREA IMPROVEMENTS
- FULLY FURNISHED SUITES AVAILABLE
- ON-SITE CAFÉ IN GATEWAY I
- NEW SECURITY SYSTEMS
- MERV-13 HVAC SYSTEMS

**GATEWAY I AMENITIES TOUR**

**NEW CONCIERGE SERVICES!**  
NOW AVAILABLE ON DEMAND FOR TENANT BUSINESS SERVICES, FAMILY ENTERTAINMENT & TRAVEL ARRANGEMENTS

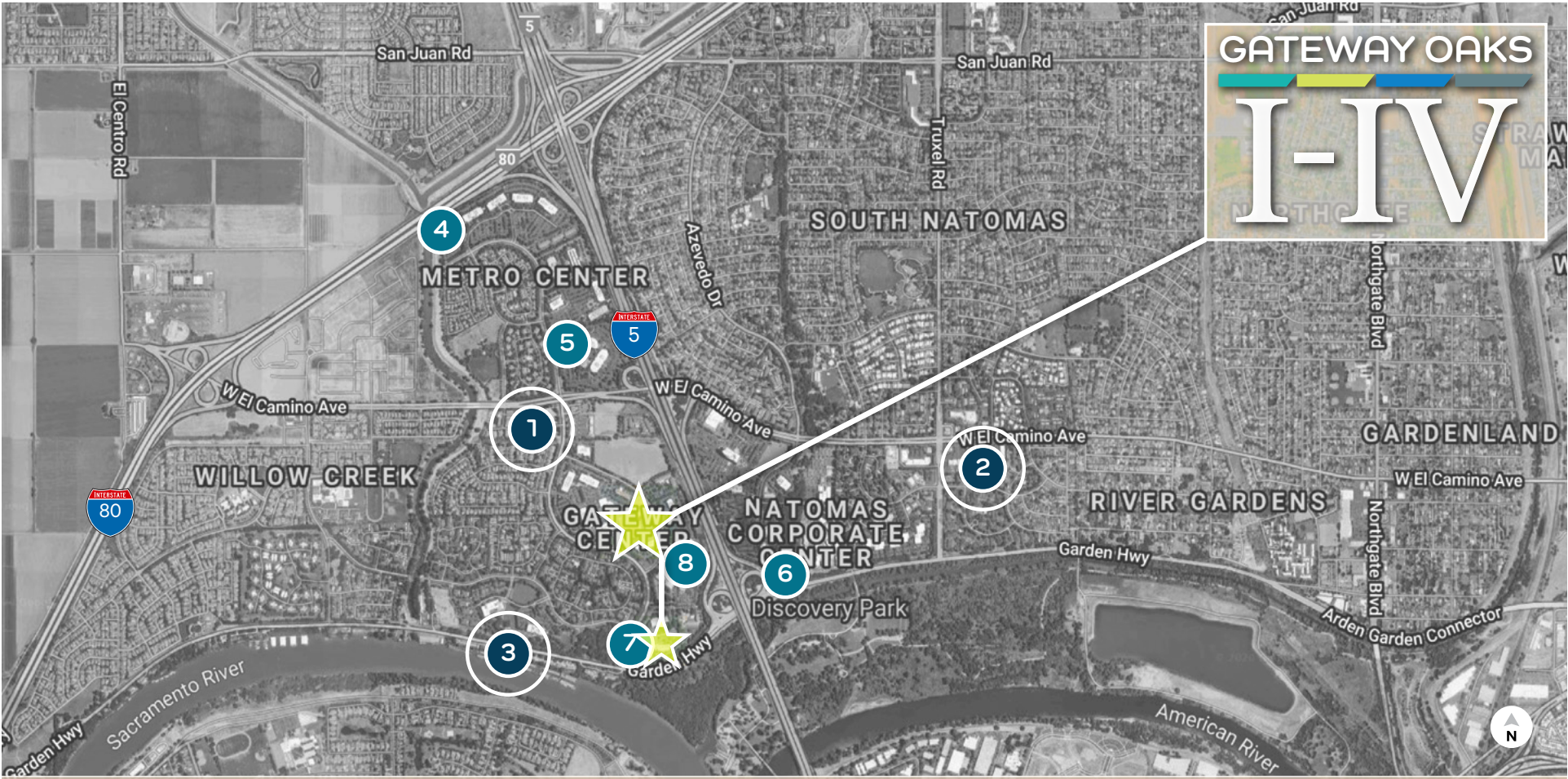
[\\*CLICK HERE FOR MORE INFORMATION](#)



# BUILDING PHOTOS



# LOCATION OVERVIEW - NEARBY AMENITIES



- 1** GATEWAY OAKS DR. / W. EL CAMINO
- 2** TRUXEL / W. EL CAMINO
- 3** RIVER BANK MARINA
- OFFICE PARK CAFÉS**

- Jack in the Box
- Golden 1 Credit Union
- Sushi King
- New York Pizza Plus
- Subway
- Happy Chinese
- Shell
- Carl's Jr.
- Starbucks
- Togo's
- Baskin Robins
- Jamba Juice
- Good Friends Chinese
- Ruchi Indian Cuisine
- The Sandwich Spot

- Taco Bell
- Main Street Bagel Café
- Starbucks
- Bel Air
- Anthony's Italian Cuisine
- Azucar Sushi
- Dominos Pizza

- Donuts Plus
- Subway
- Pizza Guys
- La Bou
- Mezcal Taqueria
- Cheers Sports Bar
- Lotus Fusion Sushi & Chinese
- Country Waffles
- Little Caesars Pizza
- CVS Pharmacy
- Chang's Chinese
- Mr. Carnitas

- Chevy's
- Pearl
- Crawdad's

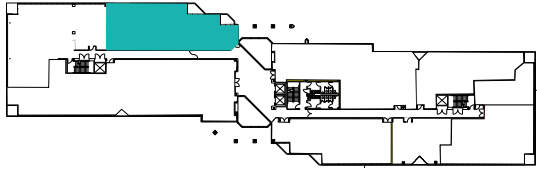
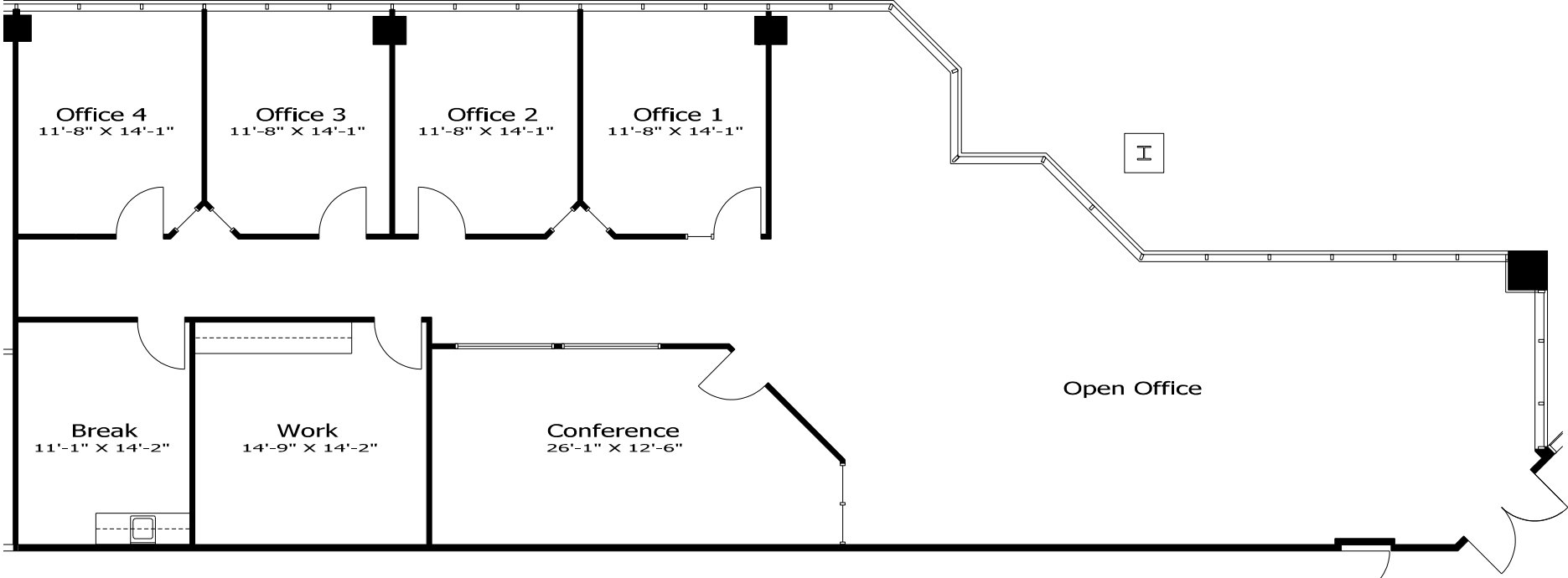
- 4** Metro Café
- 5** City Café
- 6** Natomas Café
- 7** Marriott Café
- 8** Venture Café

# 3,188 RSF | SUITE 150

2150 River Plaza Drive



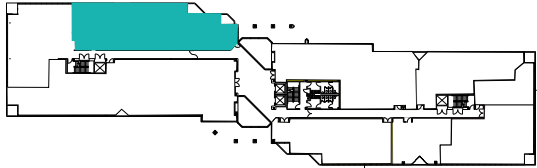
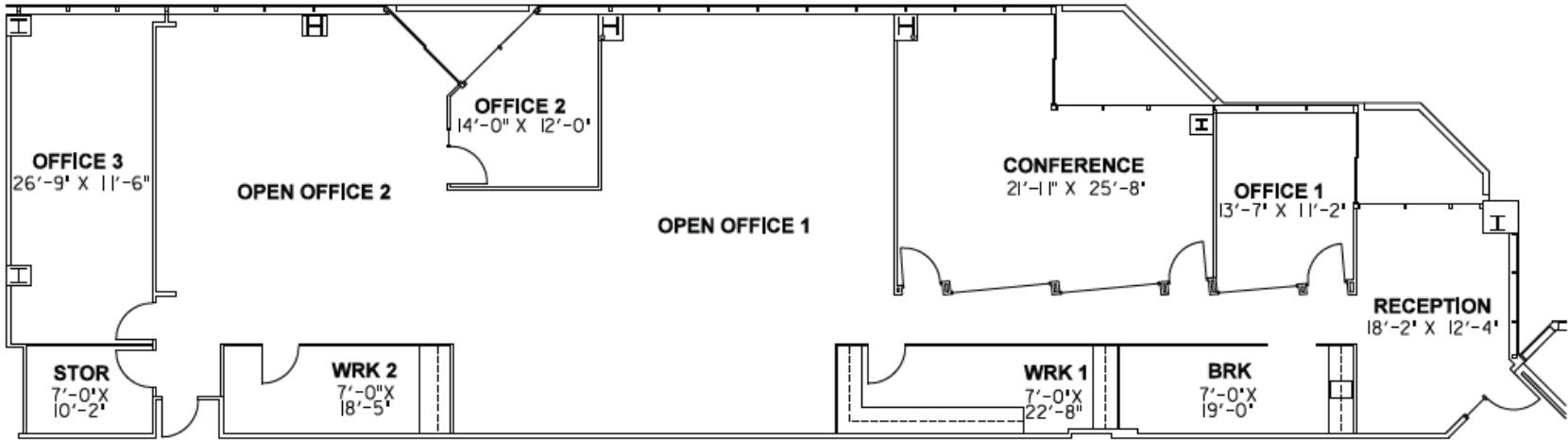
\*Available within 60 days



NOT TO SCALE. ALL MEASUREMENTS ARE APPROXIMATE.

# 4,284 RSF | SUITE 245

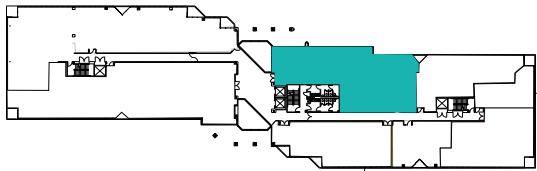
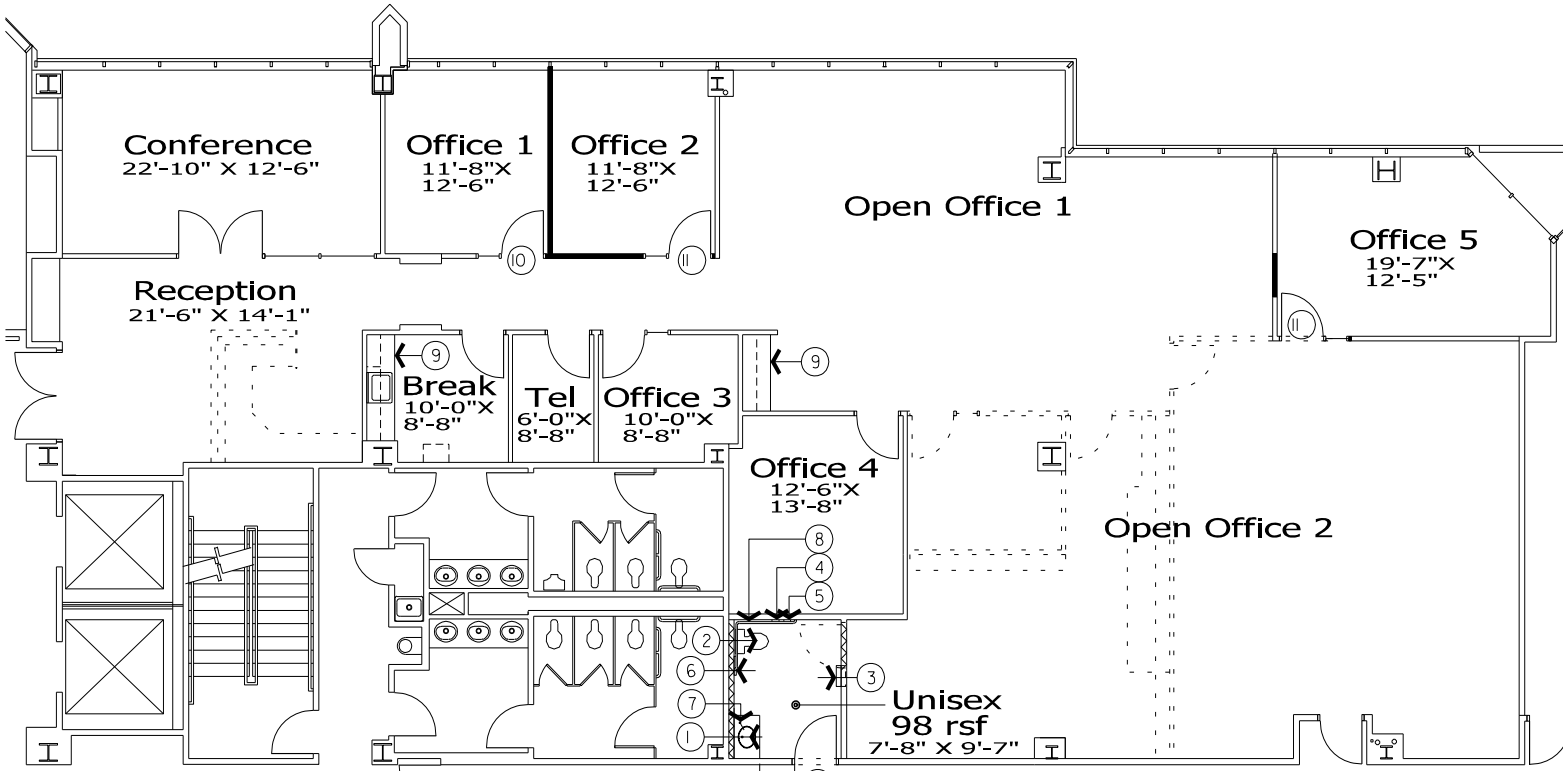
2150 River Plaza Drive



NOT TO SCALE. ALL MEASUREMENTS ARE APPROXIMATE.

# 4,488 RSF | SUITE 255

2150 River Plaza Drive



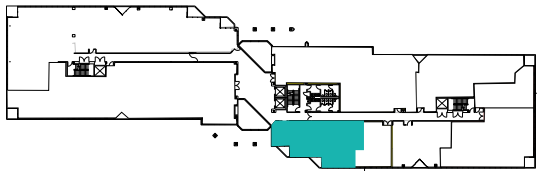
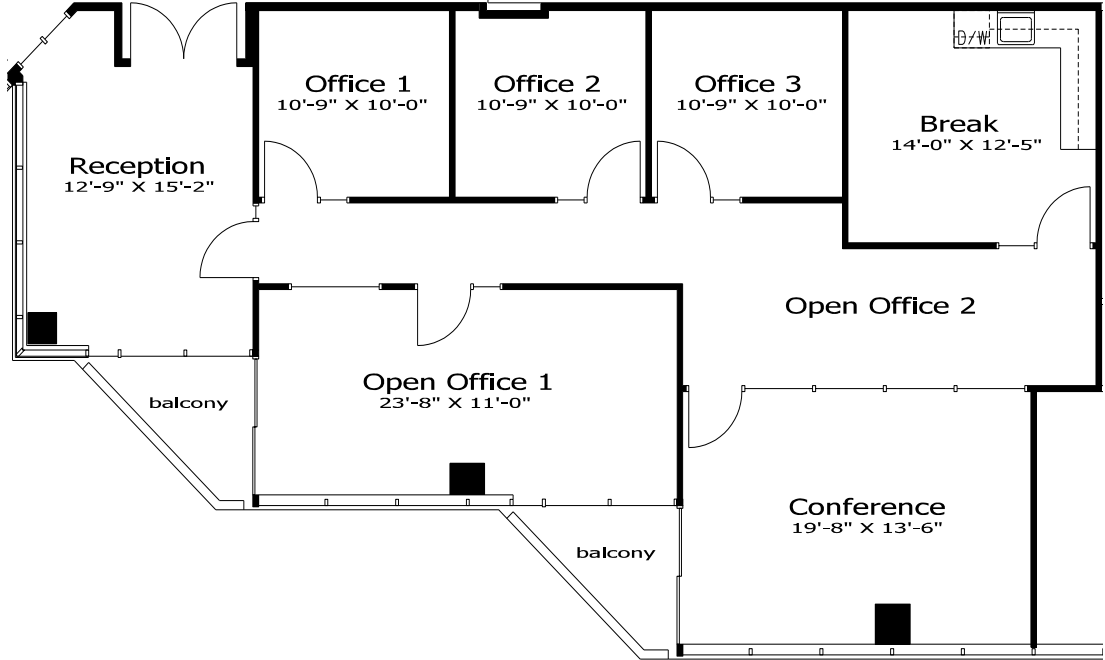
## HYPOTHETICAL PLAN

NOT TO SCALE. ALL MEASUREMENTS ARE APPROXIMATE.



# 1,878 RSF | SUITE 260

2150 River Plaza Drive



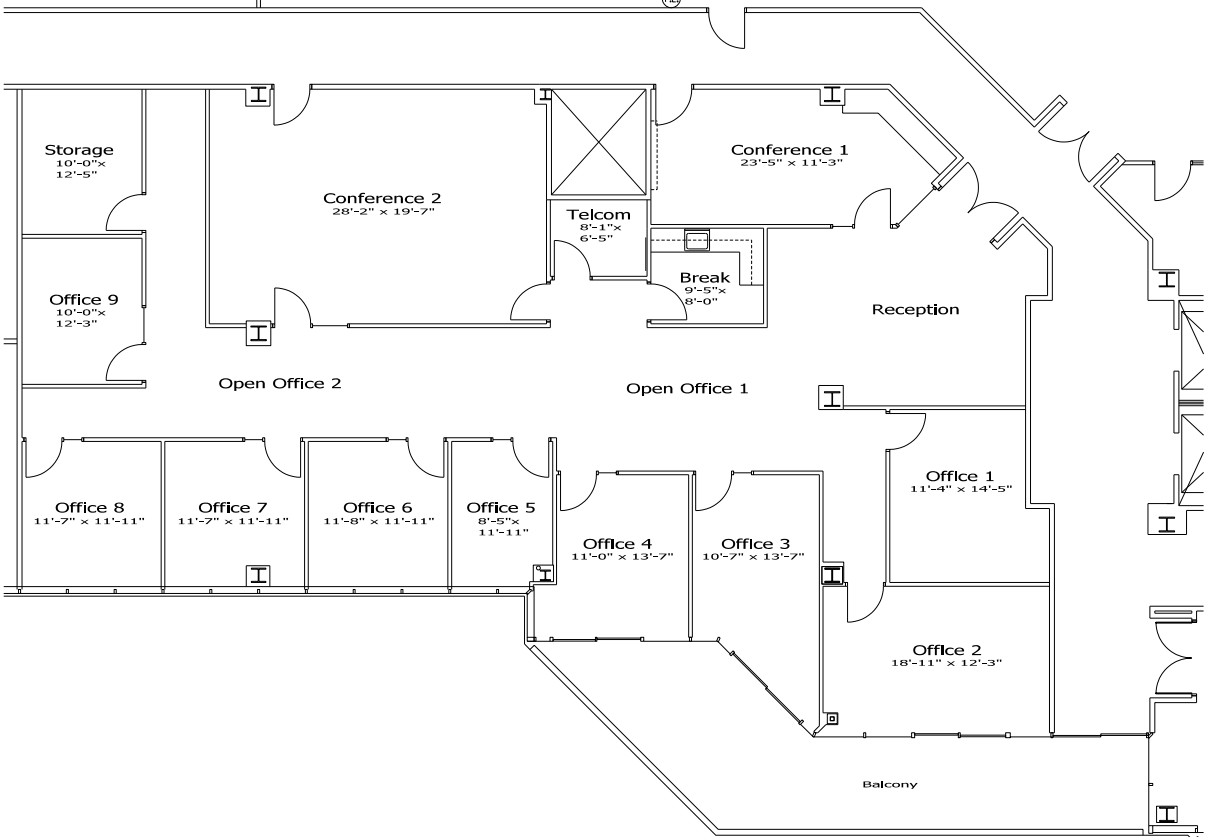
NOT TO SCALE. ALL MEASUREMENTS ARE APPROXIMATE.

# 4,325 RSF | SUITE 350

2150 River Plaza Drive

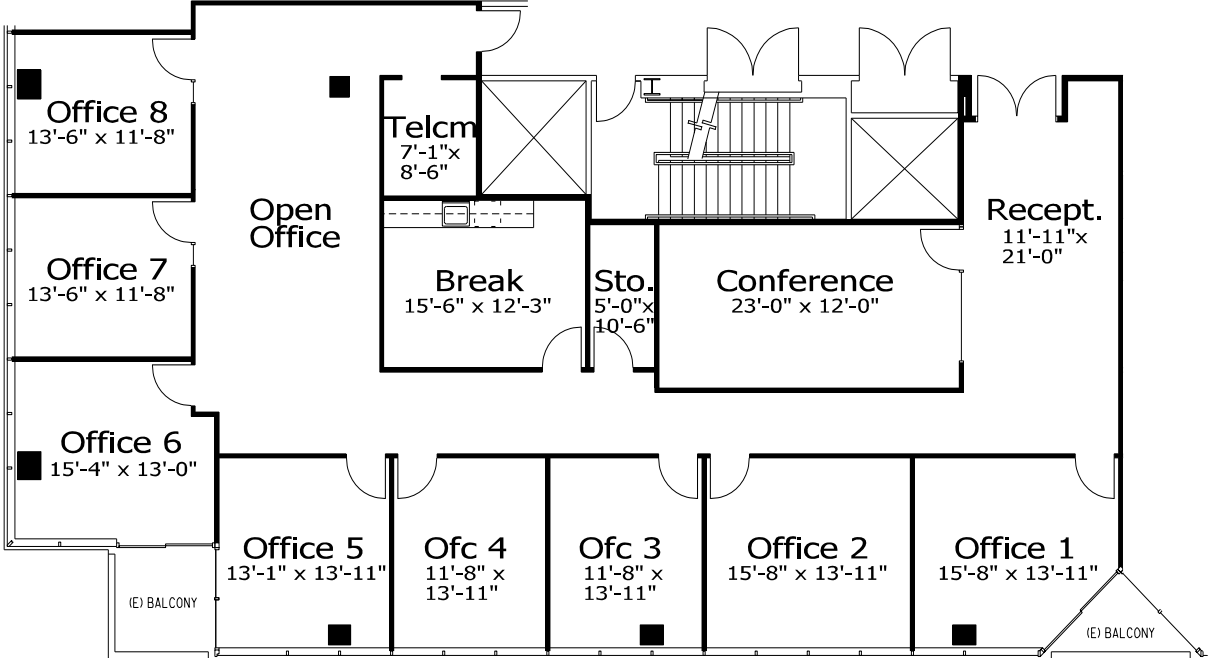


\*Available 10/1/24



NOT TO SCALE. ALL MEASUREMENTS ARE APPROXIMATE.

3,820 RSF | SUITE 430  
2150 River Plaza Drive



# HYPOTHETICAL PLAN

NOT TO SCALE. ALL MEASUREMENTS ARE APPROXIMATE.

**FOR LEASE**

2150 River Plaza Drive | Sacramento, CA

# GATEWAY OAKS

# I

## EXCLUSIVE LISTING AGENTS:

**TONY WHITTAKER**

+1 916 492 6914

TONY.WHITTAKER@CBRE.COM

LIC. 01780828

**JASON GOFF**

+1 916 446 8222

JASON.GOFF@CBRE.COM

LIC. 01205230

**NELLIE CRUZ**

+1 916 492 6915

NELLIE.CRUZ@CBRE.COM

LIC. 02086140

