

FOR LEASE

2151 River Plaza Drive | Sacramento, CA

GATEWAY OAKS

II

 VIDEO TOUR

THE VERSATILE OFFICE EXPERIENCE PROMOTING CULTURE, COLLABORATION AND WELLNESS

TONY WHITTAKER
+1 916 492 6914
TONY.WHITTAKER@CBRE.COM
LIC. 01780828

JASON GOFF
+1 916 446 8222
JASON.GOFF@CBRE.COM
LIC. 01205230

NELLIE CRUZ
+1 916 492 6915
NELLIE.CRUZ@CBRE.COM
LIC. 02086140






 **BASIN STREET
PROPERTIES**

CBRE

BUILDING PARK VISUAL OVERVIEW



PROPERTY AMENITIES

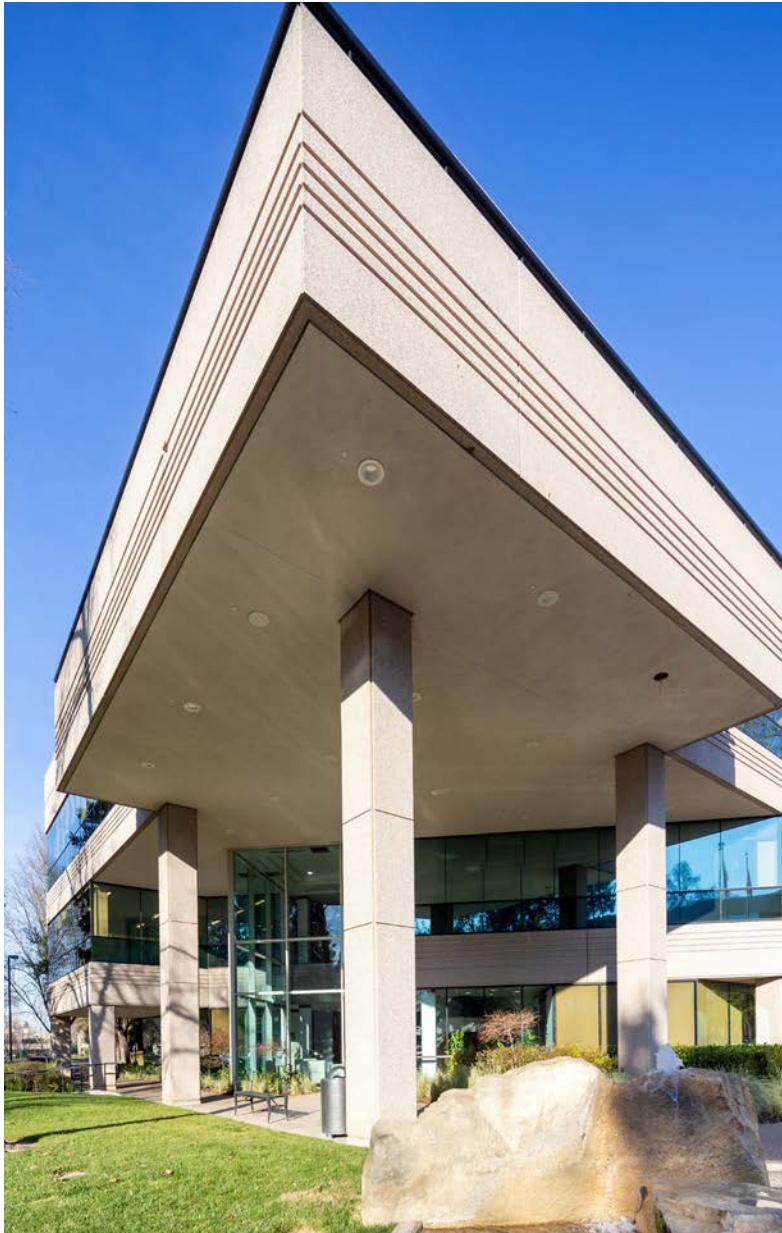
-  ON-SITE PROPERTY MANAGEMENT & ENGINEER
-  FITNESS CENTER WITH SHOWERS
-  CONFERENCE FACILITIES IN GATEWAY I & IV
-  TENANT LOUNGE IN GATEWAY I & IV
-  BIKE RACKS
-  EV CHARGING STATIONS

IN ADDITION TO THE PROPERTY AMENITIES, BELOW ARE THE SERVICES AND EXPERIENCES OFFERED TO TENANTS:

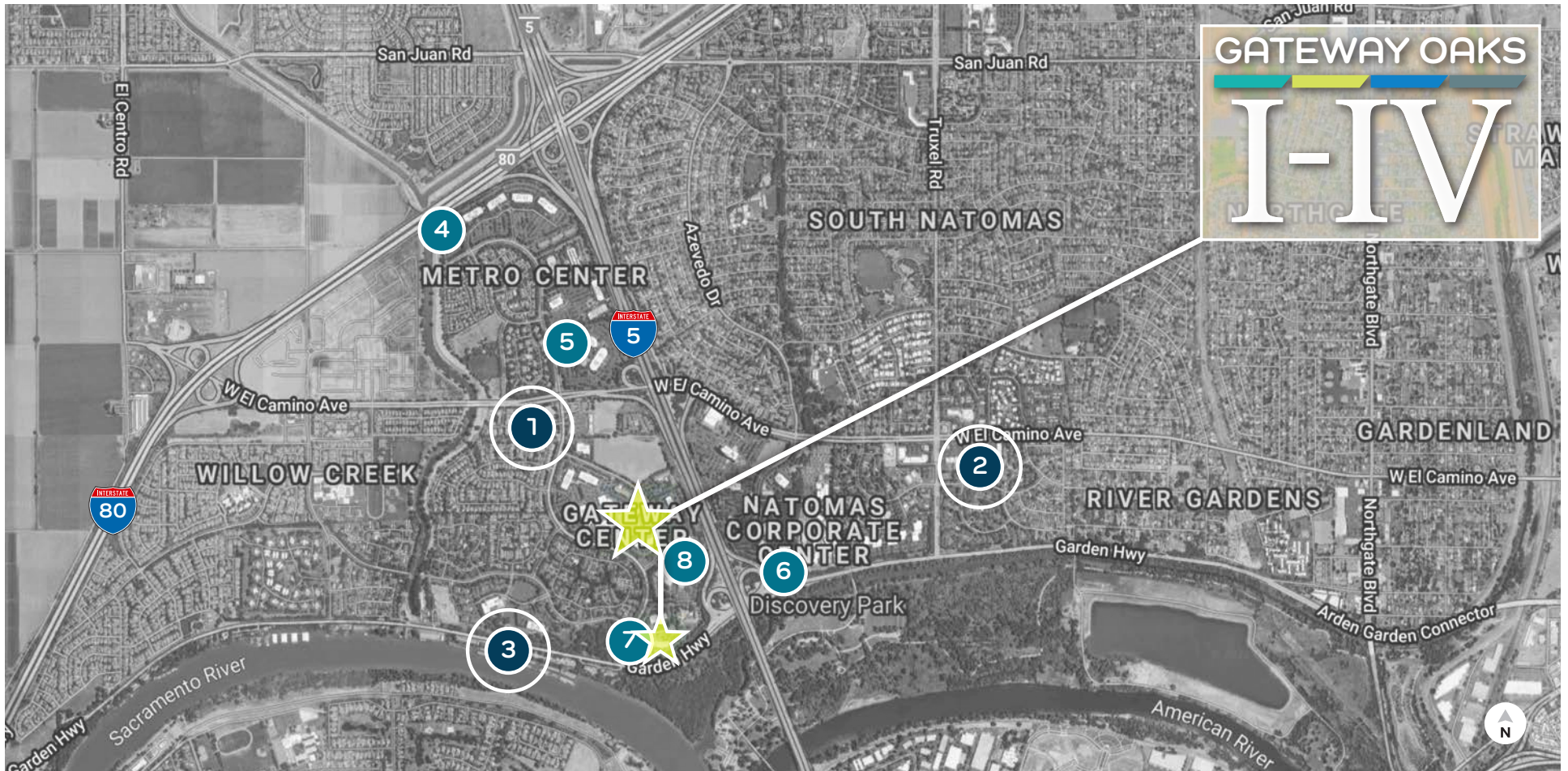
- PLENTIFUL FREE PARKING
- WIFI THROUGHOUT ALL COMMON AREAS & COLLABORATION SPACES
- HOTEL ROOM & BANQUET HALL DISCOUNTS AT THE COURTYARD BY MARRIOTT
- LUSH LANDSCAPE GROUNDS WITH TRANQUIL WATER FOUNTAINS
- NEW LOBBY & COMMON AREA IMPROVEMENTS
- FULLY FURNISHED SUITES AVAILABLE
- ON-SITE CAFÉ IN GATEWAY I
- NEW SECURITY SYSTEMS
- MERV-13 HVAC SYSTEMS



BUILDING PHOTOS



LOCATION OVERVIEW - NEARBY AMENITIES



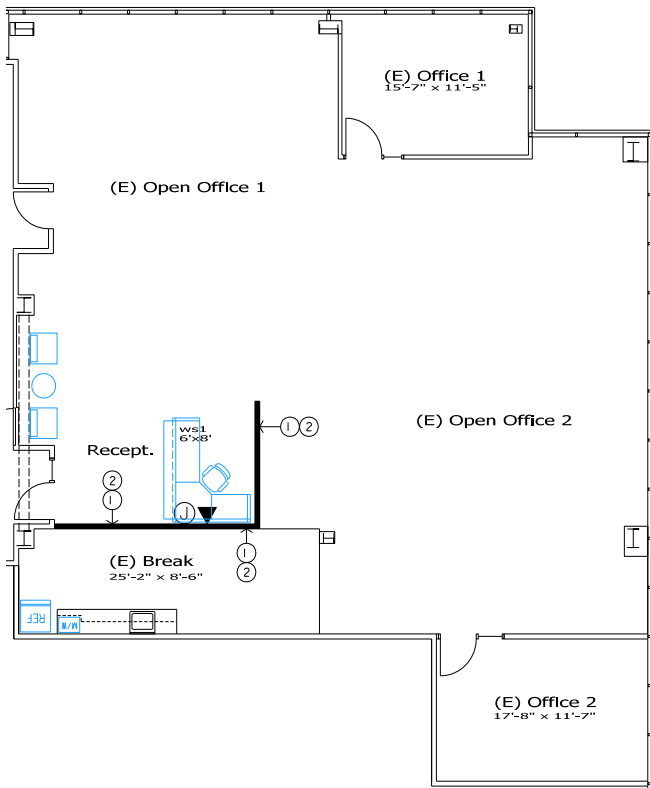
- 1** GATEWAY OAKS DR. / W. EL CAMINO
- 2** TRUXEL / W. EL CAMINO
- 3** RIVER BANK MARINA
- OFFICE PARK CAFÉS**

Jack in the Box Golden 1 Credit Union Sushi King New York Pizza Plus Subway Happy Chinese	Shell Carl's Jr. Starbucks Togo's Baskin Robins Jamba Juice	Good Friends Chinese Ruchi Indian Cuisine The Sandwich Spot Taco Bell Main Street Bagel Café Starbucks Bel Air Anthony's Italian Cuisine Azukar Sushi Dominos Pizza	Donuts Plus Subway Pizza Guys La Bou Mezcal Taqueria Cheers Sports Bar Lotus Fusion Sushi & Chinese	Country Waffles Little Caesars Pizza CVS Pharmacy Chang's Chinese Mr. Carnitas	Chevy's Pearl Crawdad's	<ul style="list-style-type: none"> 4 Metro Café 5 City Café 6 Natomas Café 7 Marriott Café 8 Venture Café
--	--	--	---	--	-------------------------------	---

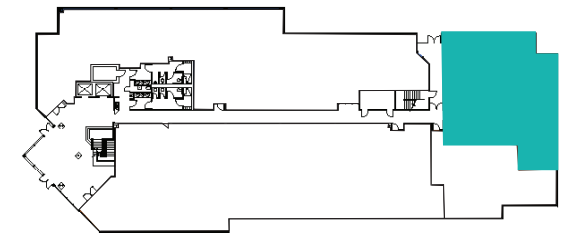
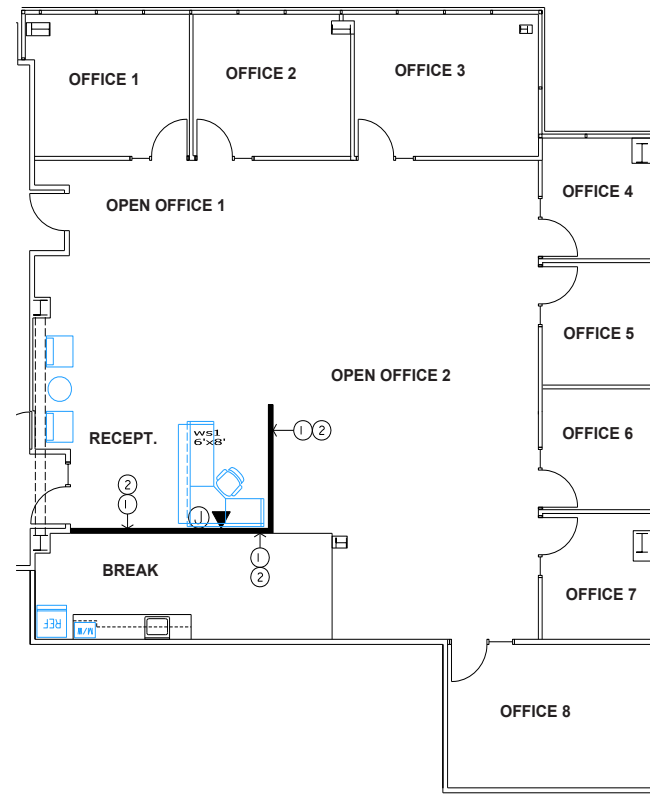
3,216 RSF | SUITE 170
2151 River Plaza Drive

VIEW THE VIRTUAL TOUR 

AS-BUILT PLAN



HYPOTHETICAL PLAN



MOVE-IN READY!

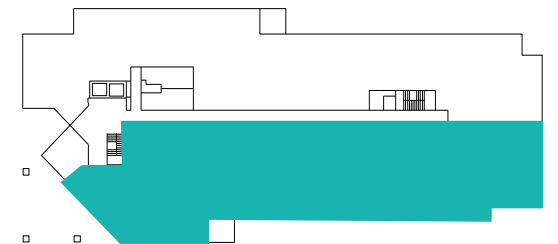
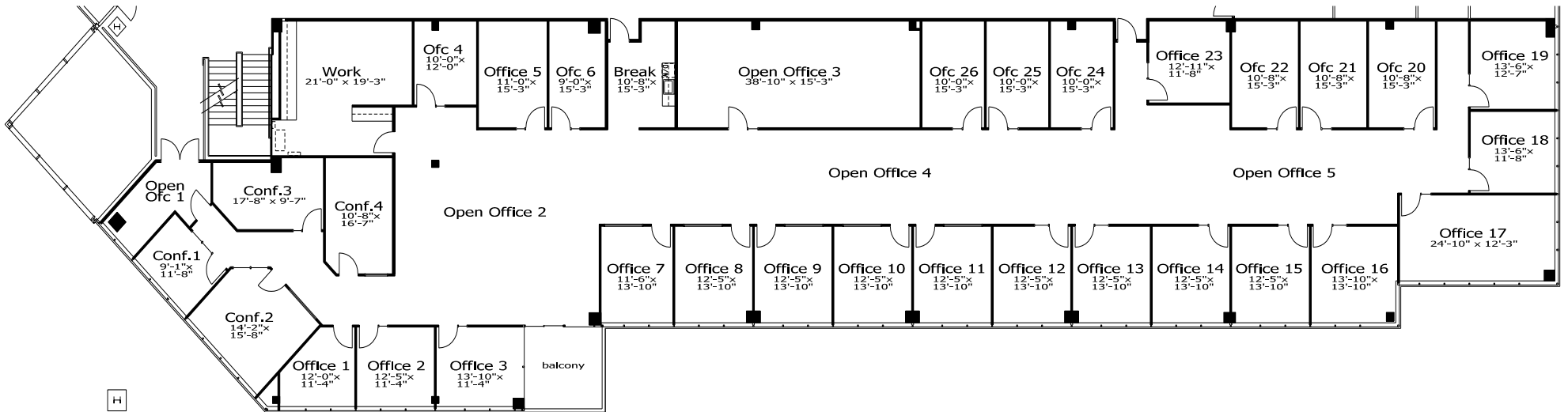
NOT TO SCALE. ALL MEASUREMENTS ARE APPROXIMATE.

11,337 RSF | SUITE 200

2151 River Plaza Drive



*Available 4/1/2024



NOT TO SCALE. ALL MEASUREMENTS ARE APPROXIMATE.

FOR LEASE

2151 River Plaza Drive | Sacramento, CA

GATEWAY OAKS

II

EXCLUSIVE LISTING AGENTS:

TONY WHITTAKER

+1 916 492 6914
TONY.WHITTAKER@CBRE.COM
LIC. 01780828

JASON GOFF

+1 916 446 8222
JASON.GOFF@CBRE.COM
LIC. 01205230

NELLIE CRUZ

+1 916 492 6915
NELLIE.CRUZ@CBRE.COM
LIC. 02086140

