

FOR LEASE

2151 River Plaza Drive | Sacramento, CA

GATEWAY OAKS

II

 VIDEO
TOUR

THE VERSATILE OFFICE EXPERIENCE PROMOTING CULTURE, COLLABORATION AND WELLNESS

TONY WHITTAKER

+1 916 492 6914

TONY.WHITTAKER@CBRE.COM

LIC. 01780828

JASON GOFF

+1 916 446 8222

JASON.GOFF@CBRE.COM

LIC. 01205230

NELLIE CRUZ

+1 916 492 6915

NELLIE.CRUZ@CBRE.COM

LIC. 02086140



**BASIN STREET
PROPERTIES**

CBRE

BUILDING PARK VISUAL OVERVIEW



GO-I

2150 RIVER PLAZA DR



GO-II

2151 RIVER PLAZA DR



GO-III

2295 GATEWAY OAKS DR

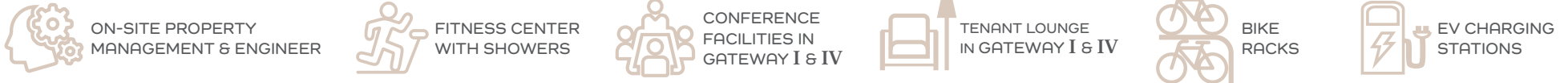


GO-IV

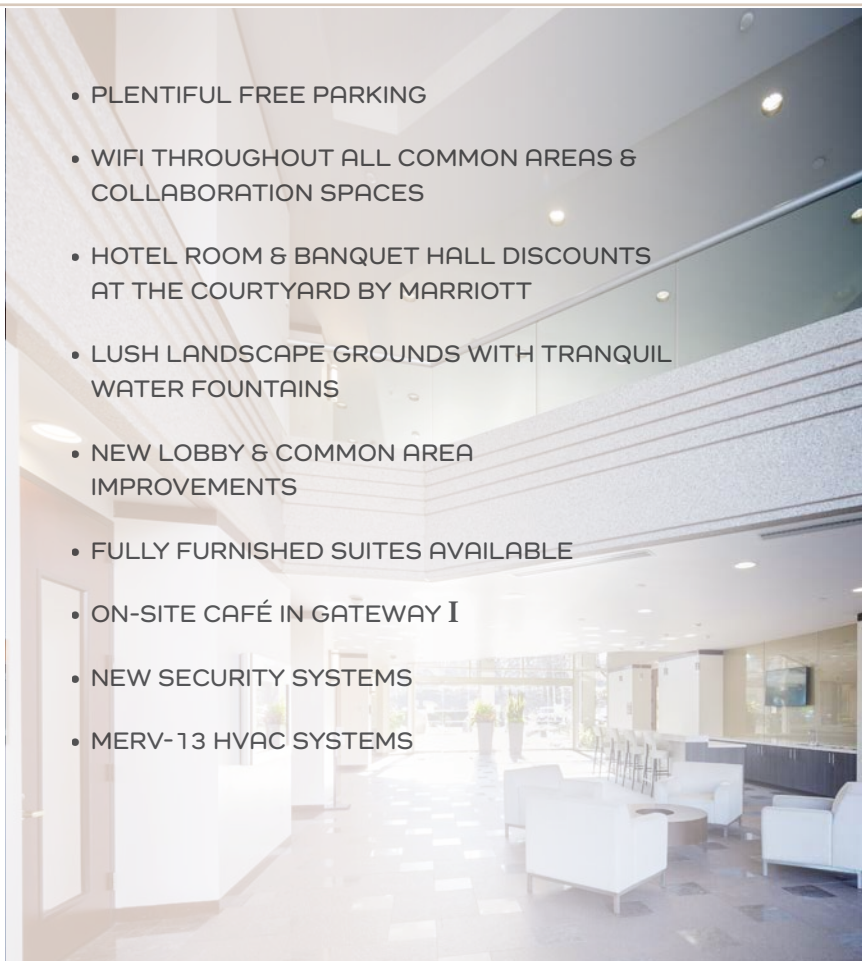
2520 VENTURE OAKS WY



PROPERTY AMENITIES



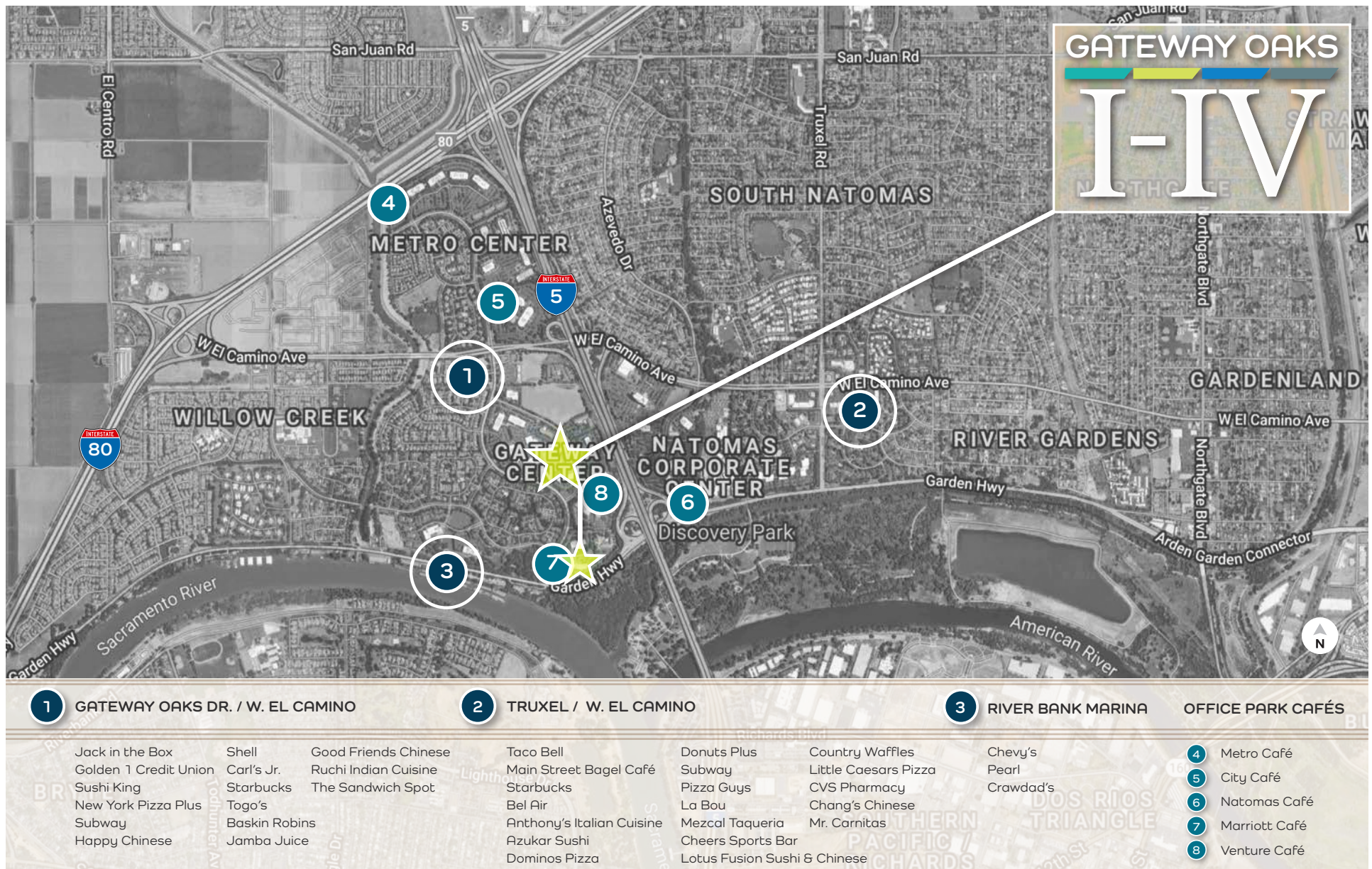
IN ADDITION TO THE PROPERTY AMENITIES, BELOW ARE THE SERVICES AND EXPERIENCES OFFERED TO TENANTS:



BUILDING PHOTOS

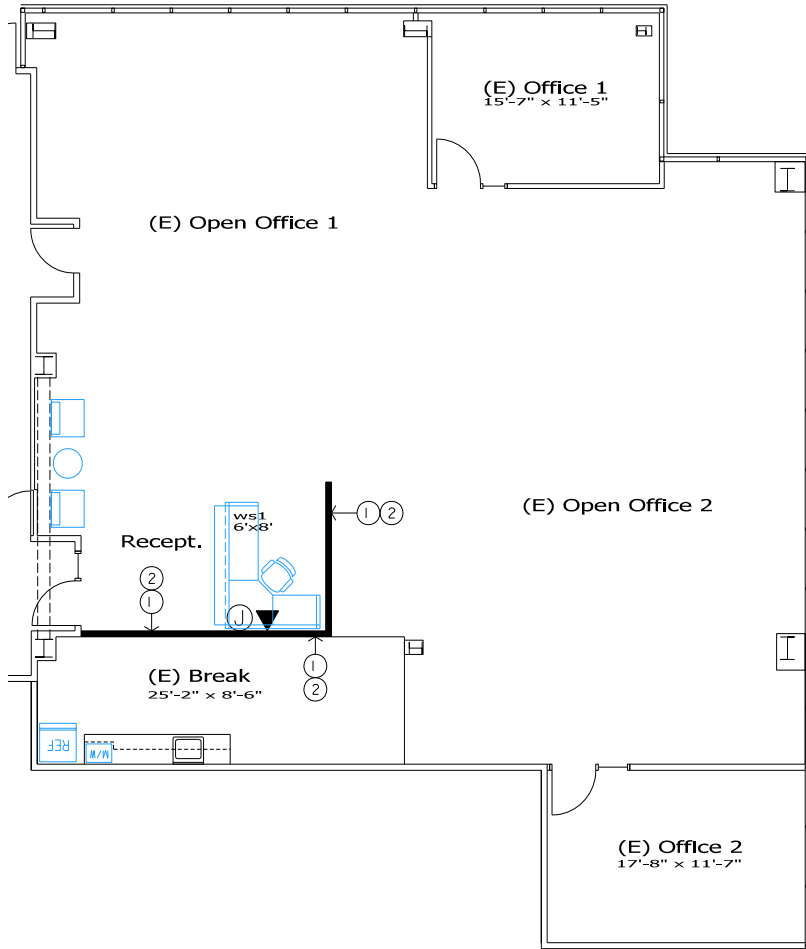


LOCATION OVERVIEW - NEARBY AMENITIES

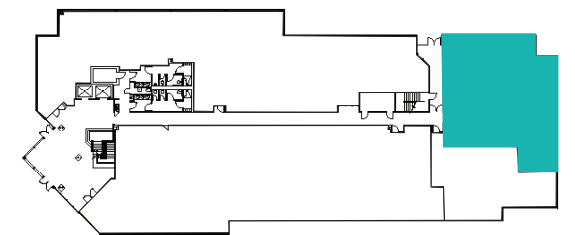


3,216 RSF | SUITE 170

2151 River Plaza Drive



MOVE-IN READY!



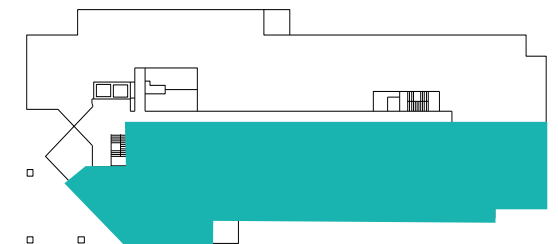
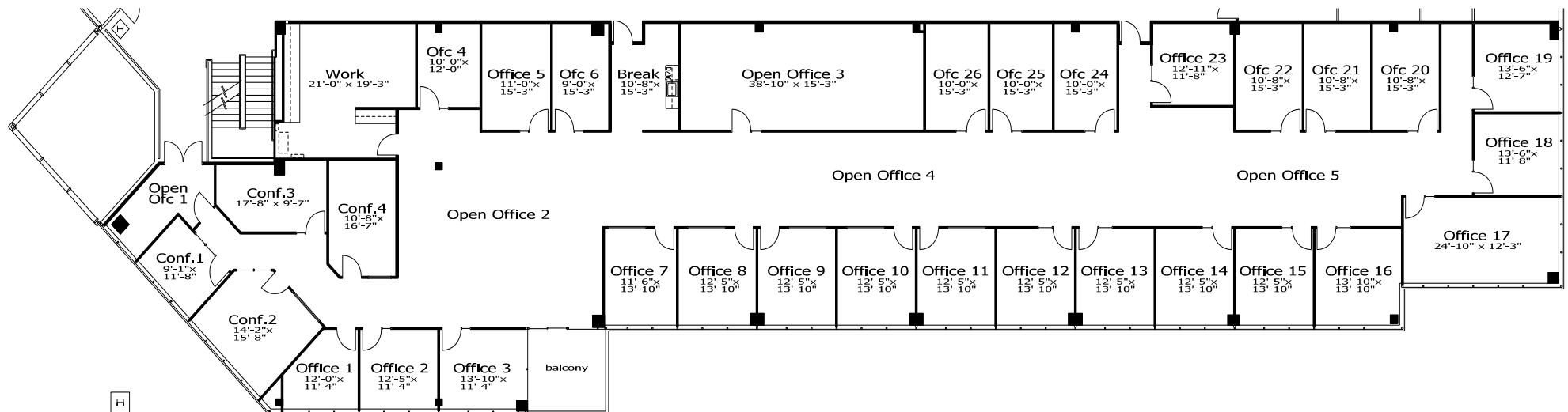
NOT TO SCALE. ALL MEASUREMENTS ARE APPROXIMATE.

11,337 RSF | SUITE 200

2151 River Plaza Drive



*Available 4/1/2024



NOT TO SCALE. ALL MEASUREMENTS ARE APPROXIMATE.

FOR LEASE

2151 River Plaza Drive | Sacramento, CA

GATEWAY OAKS

II

EXCLUSIVE LISTING AGENTS:

TONY WHITTAKER

+1 916 492 6914

TONY.WHITTAKER@CBRE.COM

LIC. 01780828

JASON GOFF

+1 916 446 8222

JASON.GOFF@CBRE.COM

LIC. 01205230

NELLIE CRUZ

+1 916 492 6915

NELLIE.CRUZ@CBRE.COM

LIC. 02086140



**BASIN STREET
PROPERTIES**

CBRE