

FOR LEASE

Class A Office Space in South Natomas | Sacramento, CA

GATEWAY OAKS

I-IV


**VIDEO
TOUR**

THE VERSATILE OFFICE EXPERIENCE PROMOTING CULTURE, COLLABORATION AND WELLNESS

TONY WHITTAKER

+1 916 492 6914

TONY.WHITTAKER@CBRE.COM

LIC. 01780828

JASON GOFF

+1 916 446 8222

JASON.GOFF@CBRE.COM

LIC. 01205230

NELLIE CRUZ

+1 916 492 6915

NELLIE.CRUZ@CBRE.COM

LIC. 02086140




 **50 BASIN STREET**
PROPERTIES EST. 1974

CBRE

BUILDING PARK VISUAL OVERVIEW



PROPERTY AMENITIES

-  ON-SITE PROPERTY MANAGEMENT & ENGINEER
-  FITNESS CENTER WITH SHOWERS
-  CONFERENCE FACILITIES IN GATEWAY I & IV
-  TENANT LOUNGE IN GATEWAY I & IV
-  BIKE RACKS
-  EV CHARGING STATIONS

IN ADDITION TO THE PROPERTY AMENITIES, BELOW ARE THE SERVICES AND EXPERIENCES OFFERED TO TENANTS:

- PLENTIFUL FREE PARKING
- WIFI THROUGHOUT ALL COMMON AREAS & COLLABORATION SPACES
- HOTEL ROOM & BANQUET HALL DISCOUNTS AT THE COURTYARD BY MARRIOTT
- LUSH LANDSCAPE GROUNDS WITH TRANQUIL WATER FOUNTAINS
- NEW LOBBY & COMMON AREA IMPROVEMENTS
- FULLY FURNISHED SUITES AVAILABLE
- ON-SITE CAFÉ IN GATEWAY I
- NEW SECURITY SYSTEMS
- MERV-13 HVAC SYSTEMS





GO-II



GO-III



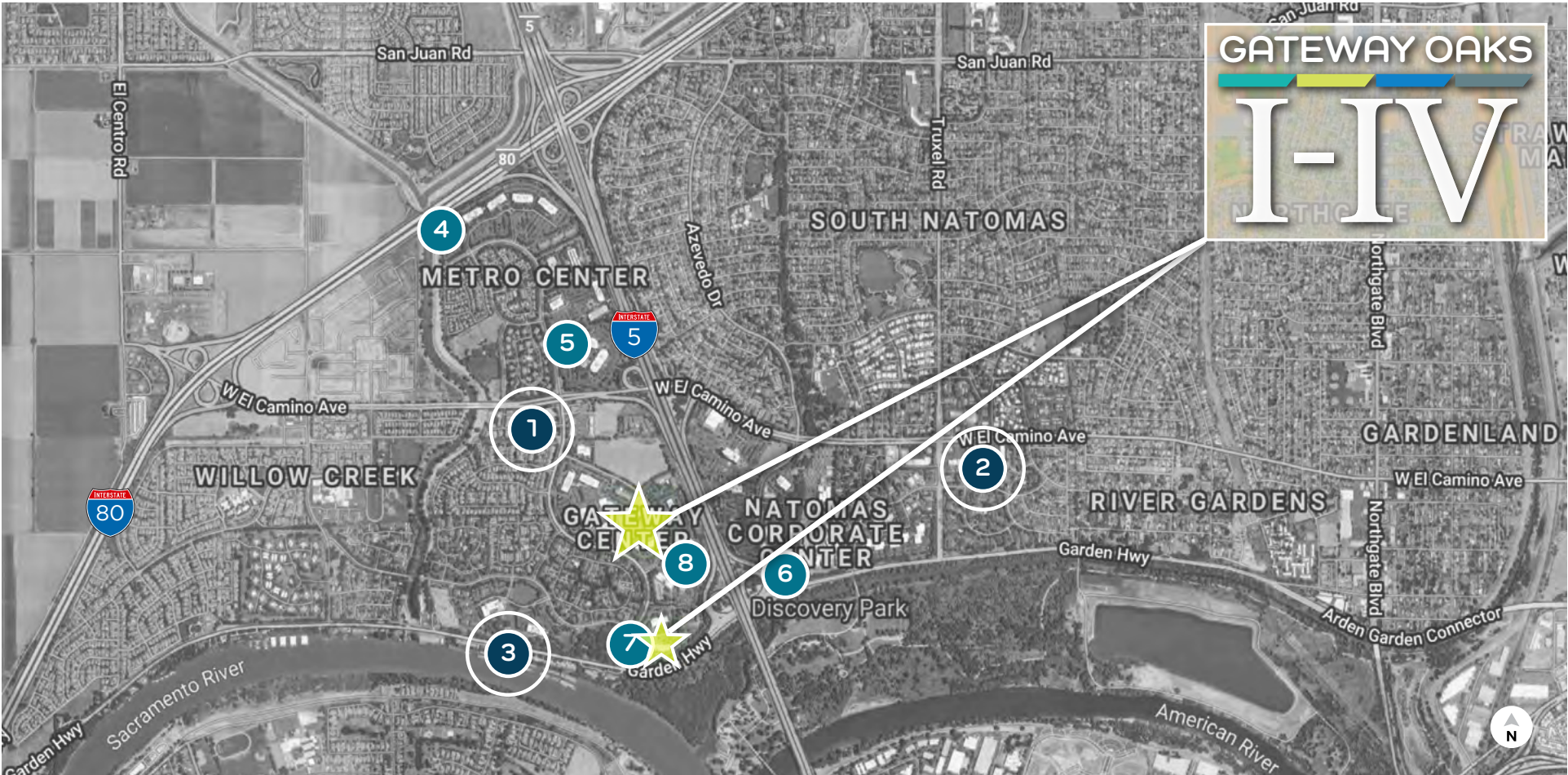
GO-I



GO-IV



LOCATION OVERVIEW - NEARBY AMENITIES



- 1** GATEWAY OAKS DR. / W. EL CAMINO
- 2** TRUXEL / W. EL CAMINO
- 3** RIVER BANK MARINA
- OFFICE PARK CAFÉS**

- Jack in the Box
- Golden 1 Credit Union
- Sushi King
- New York Pizza Plus
- Subway
- Happy Chinese
- Shell
- Carl's Jr.
- Starbucks
- Togo's
- Baskin Robins
- Jamba Juice
- Good Friends Chinese
- Ruchi Indian Cuisine
- The Sandwich Spot

- Taco Bell
- Main Street Bagel Café
- Starbucks
- Bel Air
- Anthony's Italian Cuisine
- Azucar Sushi
- Dominos Pizza

- Donuts Plus
- Subway
- Pizza Guys
- La Bou
- Mezcal Taqueria
- Cheers Sports Bar
- Lotus Fusion Sushi & Chinese
- Country Waffles
- Little Caesars Pizza
- CVS Pharmacy
- Chang's Chinese
- Mr. Carnitas

- Chevy's
- Pearl
- Crawdad's

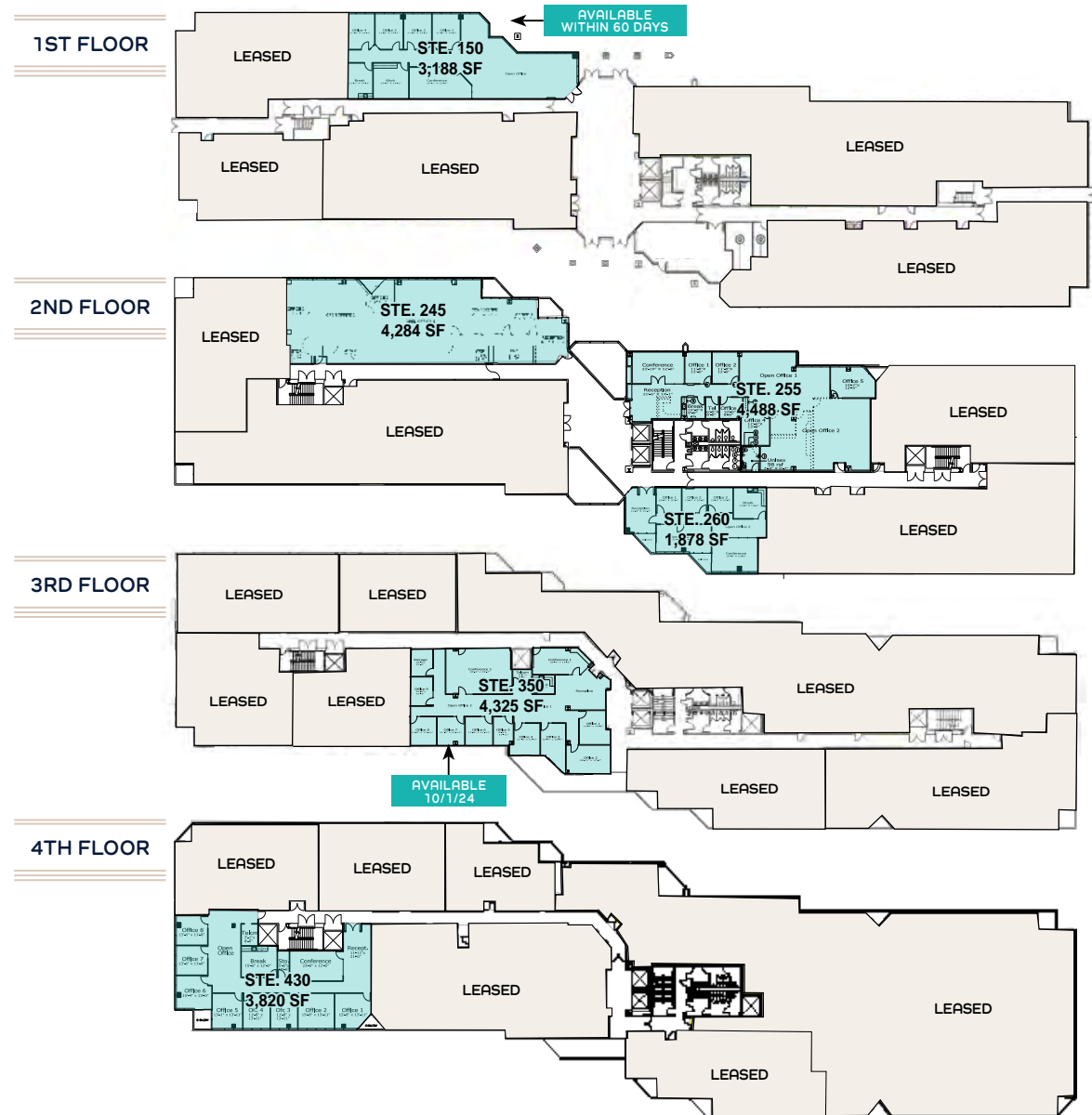
- 4** Metro Café
- 5** City Café
- 6** Natomas Café
- 7** Marriott Café
- 8** Venture Café

BUILDING AVAILABILITY

 Click Available Space to View Enlarged Floor Plan

GATEWAY OAKS I 2150 RIVER PLAZA DRIVE

- » Suite 150: 3,188 SF
- » Suite 245: 4,284 SF
- » Suite 255: 4,488 SF
- » Suite 260: 1,878 SF
- » Suite 350: 4,325 SF
- » Suite 430: 3,820 SF



NOT TO SCALE. ALL MEASUREMENTS ARE APPROXIMATE.

AVAILABLE LEASED

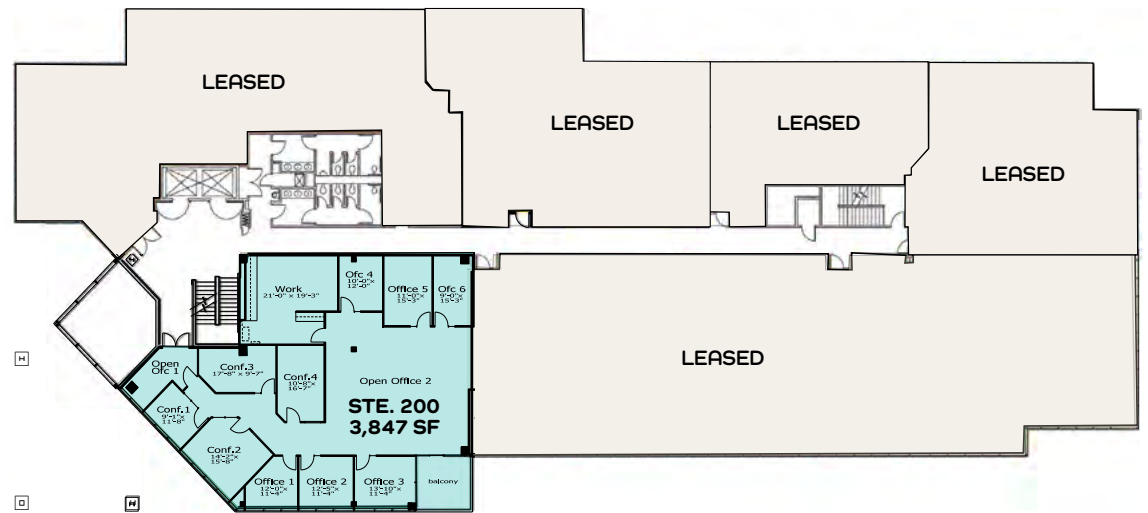
BUILDING AVAILABILITY

 Click Available Space to View Enlarged Floor Plan

GATEWAY OAKS II 2151 RIVER PARK PLAZA

» Suite 200: 3,847 SF

2ND FLOOR



NOT TO SCALE. ALL MEASUREMENTS ARE APPROXIMATE.

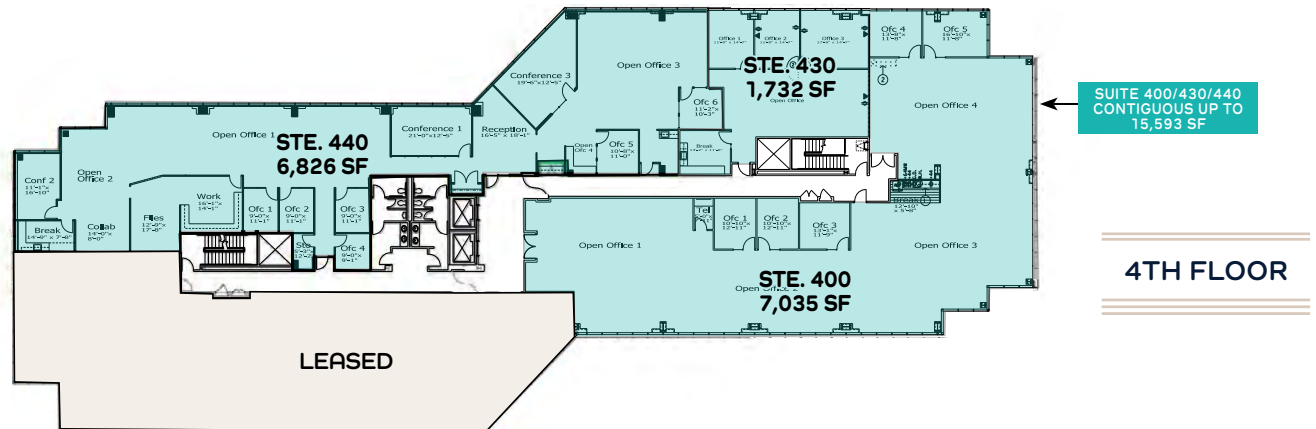
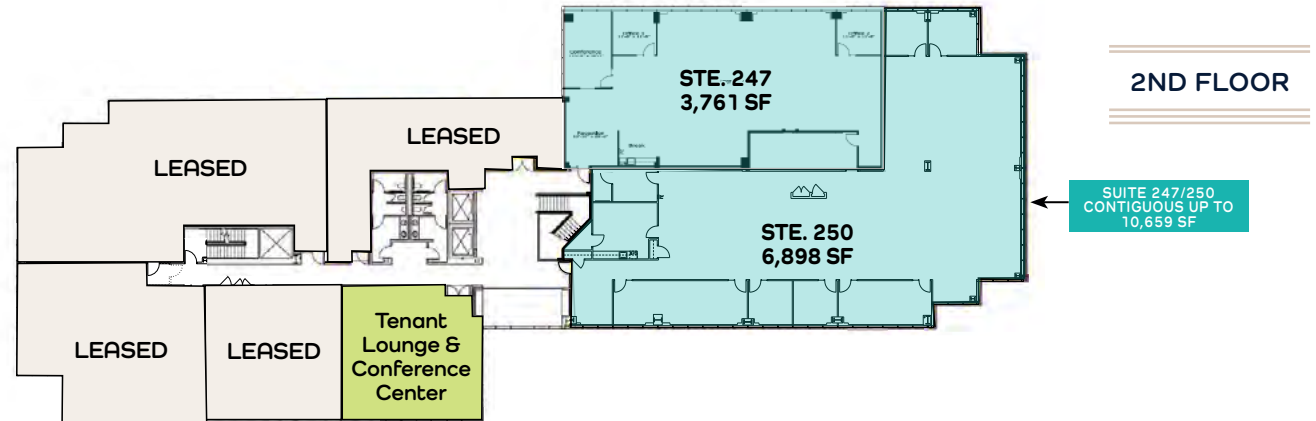


BUILDING AVAILABILITY

 Click Available Space to View Enlarged Floor Plan

GATEWAY OAKS IV 2520 VENTURE OAKS WAY

- » Suite 247: 3,761-10,659 SF
- » Suite 250: 6,898-10,659 SF
- » Suite 400: 7,035-15,593 SF
- » Suite 430: 1,732-15,593 SF
- » Suite 440: 6,826-15,593 SF



NOT TO SCALE. ALL MEASUREMENTS ARE APPROXIMATE.



FOR LEASE

Class A Office Space in South Natomas | Sacramento, CA

GATEWAY OAKS

I-IV

EXCLUSIVE LISTING AGENTS:

TONY WHITTAKER

+1 916 492 6914

TONY.WHITTAKER@CBRE.COM

LIC. 01780828

JASON GOFF

+1 916 446 8222

JASON.GOFF@CBRE.COM

LIC. 01205230

NELLIE CRUZ

+1 916 492 6915

NELLIE.CRUZ@CBRE.COM

LIC. 02086140

50 BASIN STREET
PROPERTIES EST. 1974

CBRE