

Five State-of-the-Art Office Building

White Rock Corporate Campus

Premier suburban office in the Highway 50 Corridor



EXCLUSIVELY MARKETED BY:

Todd Eschelman

916.569.2347

teschelman@ngkf.com

CA RE License #01051148

Kirk Lange

916.569.2331

klange@ngkf.com

CA RE License #00870331

Jack Blackmon

916.569.2372

jack.blackmon@ngkf.com

CA RE License #01999561



Premier Suburban Office Campus in the Highway 50 Corridor

White Rock Corporate Campus



WhiteRockCampus.com

Five State-of-the-Art Office Buildings



Units from $\pm 1,350$ RSF - $\pm 35,950$ RSF

- \$2.5 Million in planned capital improvements
- The project totals $\pm 518,000$ square feet and offers a balanced tenant mix of local, national and international firms
- Campus setting with ± 2.5 acre park lined with benches and walk paths shaded by a redwood grove
- Easy Highway 50 access via Zinfandel Drive and Sunrise Boulevard interchanges
- 15 minutes from downtown Sacramento and 30 minutes from the Sacramento International Airport
- Short walk to bus and light rail stations
- Abundant surface parking, with 4/1,000 parking ratio
- On-site café and fully equipped fitness center
- Responsive on-site management and engineering

EXCLUSIVELY MARKETED BY:

Todd Eschelman
916.569.2347
teschelman@ngkf.com
CA RE License #01051148

Kirk Lange
916.569.2331
klange@ngkf.com
CA RE License #00870331

Jack Blackmon
916.569.2372
jack.blackmon@ngkf.com
CA RE License #01999561



Premier Suburban Office Campus in the Highway 50 Corridor

White Rock Corporate Campus



WhiteRockCampus.com

Five-Story Class A Office Building



Building **A**spire
10860 Gold Center Drive



Building **B**uild
10951 White Rock Road



Building **C**reate
10911 White Rock Road



Building **D**esign
10877 White Rock Road



Building **E**xplore
10850 Gold Center Drive

EXCLUSIVELY MARKETED BY:

Todd Eschelman
916.569.2347
teschelman@ngkf.com
CA RE License #01051148

Kirk Lange
916.569.2331
klange@ngkf.com
CA RE License #00870331

Jack Blackmon
916.569.2372
jack.blackmon@ngkf.com
CA RE License #01999561



Premier Suburban Office Campus in the Highway 50 Corridor

White Rock Corporate Campus



WhiteRockCampus.com

Campus Amenities



Tenant Lounge



Fitness Center



Improved Exterior and Interior Common Area Seating



Interior Common Area



**CLICK HERE
FOR COMMON AREA
PHOTOS**

EXCLUSIVELY MARKETED BY:

Todd Eschelman
916.569.2347
teschelman@ngkf.com
CA RE License #01051148

Kirk Lange
916.569.2331
klange@ngkf.com
CA RE License #00870331

Jack Blackmon
916.569.2372
jack.blackmon@ngkf.com
CA RE License #01999561



Premier Suburban Office Campus in the Highway 50 Corridor

White Rock Corporate Campus



WhiteRockCampus.com

Campus Amenities



Common Area Seating



New Building Signage



Volleyball Court and Updated Landscaping



White Rock Campus within the route of Amgen Tour 2019

EXCLUSIVELY MARKETING BY:

Todd Eschelman
916.569.2347
teschelman@ngkf.com
CA RE License #01051148

Kirk Lange
916.569.2331
klange@ngkf.com
CA RE License #00870331

Jack Blackmon
916.569.2372
jack.blackmon@ngkf.com
CA RE License #01999561



Premier Suburban Office Campus in the Highway 50 Corridor

White Rock Corporate Campus

WhiteRockCampus.com

Amenities Aerial & Location Map



EXCLUSIVELY MARKETING BY:

Todd Eschelman
916.569.2347
teschelman@ngkf.com
CA RE License #01051148

Kirk Lange
916.569.2331
klange@ngkf.com
CA RE License #00870331

Jack Blackmon
916.569.2372
jack.blackmon@ngkf.com
CA RE License #01999561

Premier Suburban Office Campus in the Highway 50 Corridor

White Rock Corporate Campus

WhiteRockCampus.com

Property Location Map & Aerial



EXCLUSIVELY MARKETING BY:

Todd Eschelman
916.569.2347
teschelman@ngkf.com
CA RE License #01051148

Kirk Lange
916.569.2331
klange@ngkf.com
CA RE License #00870331

Jack Blackmon
916.569.2372
jack.blackmon@ngkf.com
CA RE License #01999561

Premier Suburban Office Campus in the Highway 50 Corridor

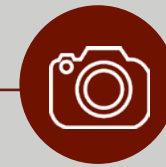
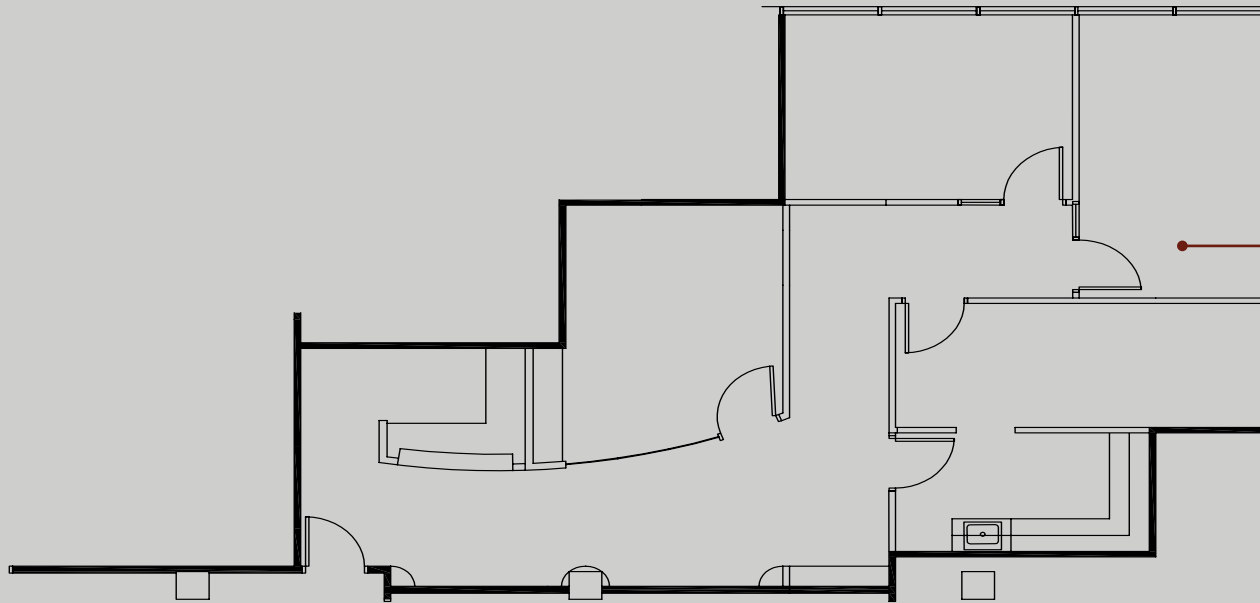
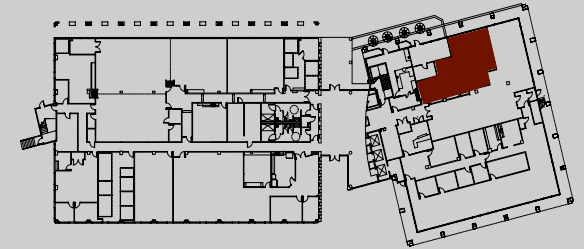
White Rock Corporate Campus



WhiteRockCampus.com

1,350 RSF
SUITE 150

Building **A**spire
10860 Gold Center Dr
First Floor



**CLICK HERE
FOR PHOTOS**
Suite 150

EXCLUSIVELY MARKETED BY:

Todd Eschelman
916.569.2347
teschelman@ngkf.com
CA RE License #01051148

Kirk Lange
916.569.2331
klange@ngkf.com
CA RE License #00870331

Jack Blackmon
916.569.2372
jack.blackmon@ngkf.com
CA RE License #01999561



Premier Suburban Office Campus in the Highway 50 Corridor

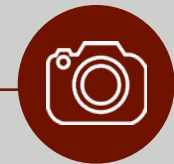
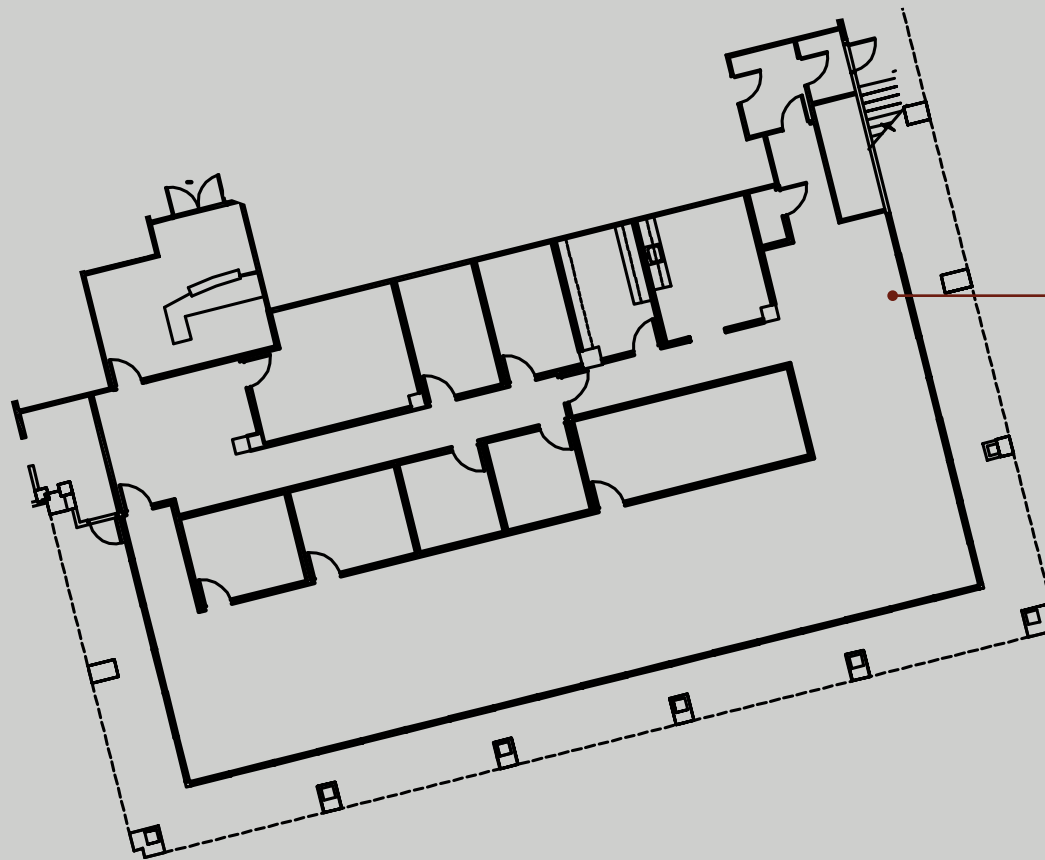
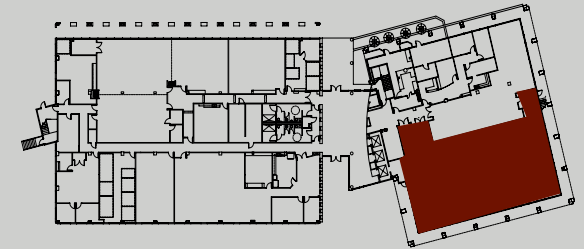
White Rock Corporate Campus



WhiteRockCampus.com

4,898 RSF
SUITE 180

Building **A**spire
10860 Gold Center Dr
First Floor



**CLICK HERE
FOR PHOTOS**

Suite 180

EXCLUSIVELY MARKETING BY:

Todd Eschelman
916.569.2347
teschelman@ngkf.com
CA RE License #01051148

Kirk Lange
916.569.2331
klange@ngkf.com
CA RE License #00870331

Jack Blackmon
916.569.2372
jack.blackmon@ngkf.com
CA RE License #01999561



Premier Suburban Office Campus in the Highway 50 Corridor

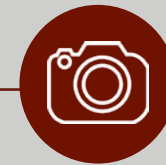
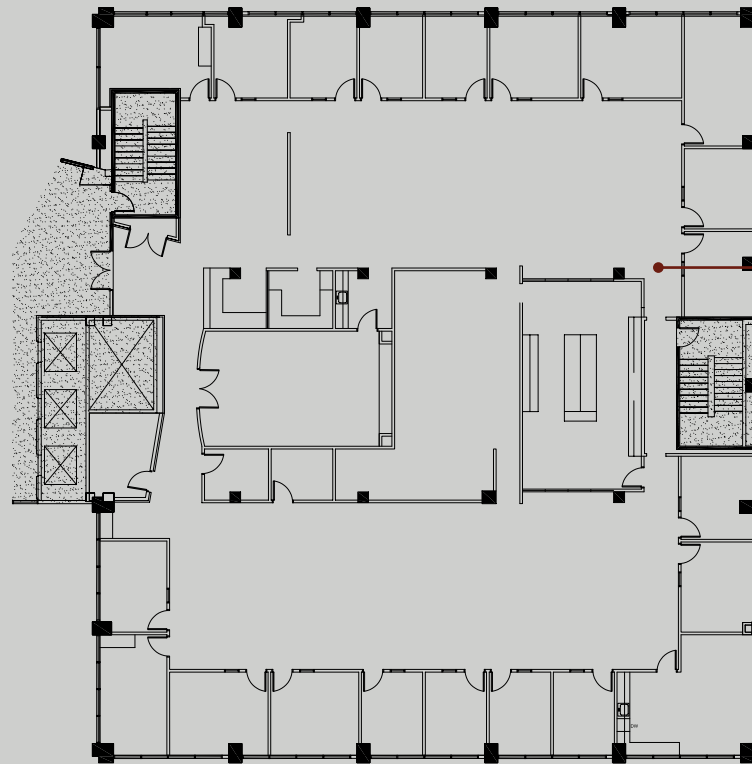
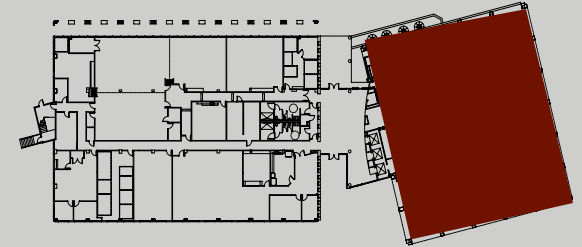
White Rock Corporate Campus



WhiteRockCampus.com

12,551 RSF
SUITE 350

Building **A**spire
10860 Gold Center Dr
Third Floor



**CLICK HERE
FOR PHOTOS**
Suite 350

EXCLUSIVELY MARKETED BY:

Todd Eschelman
916.569.2347
teschelman@ngkf.com
CA RE License #01051148

Kirk Lange
916.569.2331
klange@ngkf.com
CA RE License #00870331

Jack Blackmon
916.569.2372
jack.blackmon@ngkf.com
CA RE License #01999561



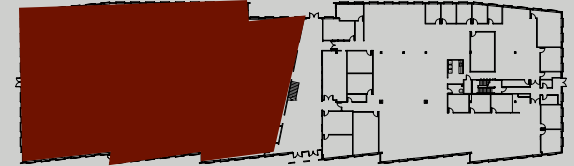
Premier Suburban Office Campus in the Highway 50 Corridor

White Rock Corporate Campus

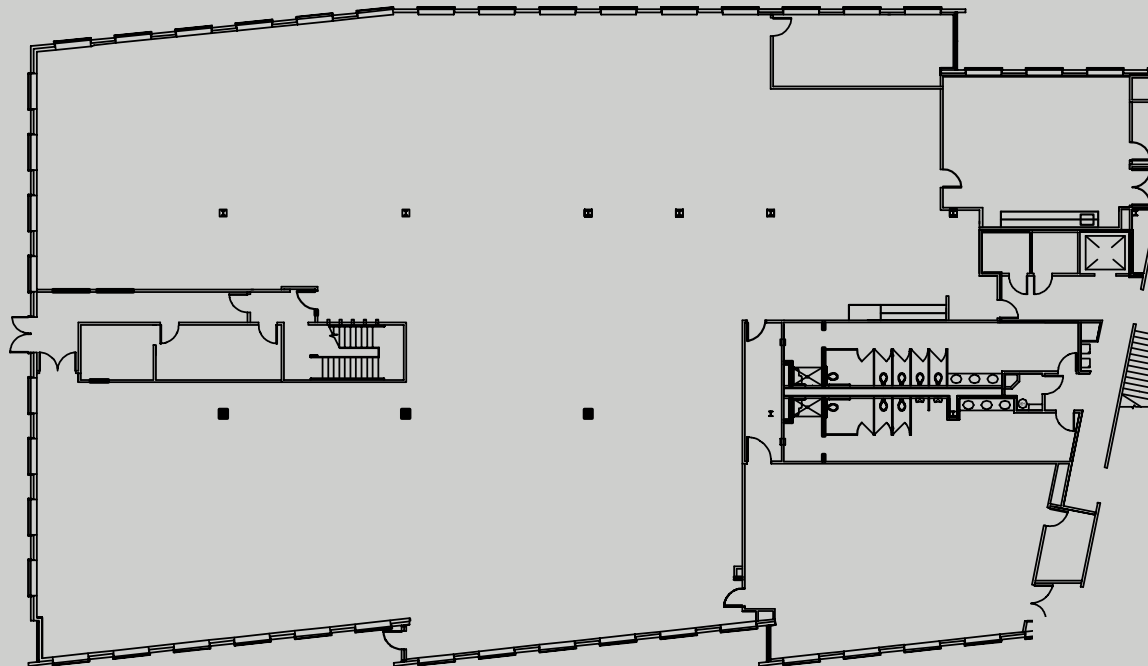


WhiteRockCampus.com

17,157 RSF
SUITE 100



Building **B**uild
10951 White Rock Rd
First Floor



EXCLUSIVELY MARKETED BY:

Todd Eschelman
916.569.2347
teschelman@ngkf.com
CA RE License #01051148

Kirk Lange
916.569.2331
klange@ngkf.com
CA RE License #00870331

Jack Blackmon
916.569.2372
jack.blackmon@ngkf.com
CA RE License #01999561

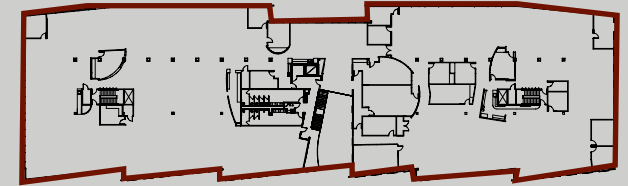
Premier Suburban Office Campus in the Highway 50 Corridor

White Rock Corporate Campus

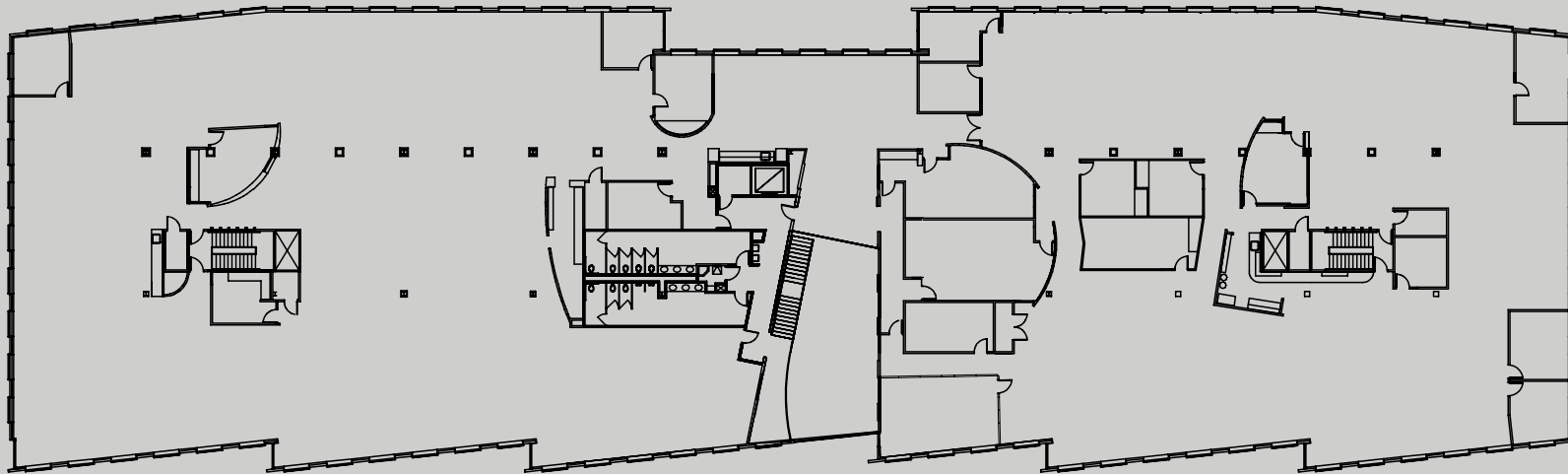


WhiteRockCampus.com

35,950 RSF
SUITE 200



Building **B**uild
10951 White Rock Rd
Second Floor



EXCLUSIVELY MARKETING BY:

Todd Eschelman
916.569.2347
teschelman@ngkf.com
CA RE License #01051148

Kirk Lange
916.569.2331
klange@ngkf.com
CA RE License #00870331

Jack Blackmon
916.569.2372
jack.blackmon@ngkf.com
CA RE License #01999561

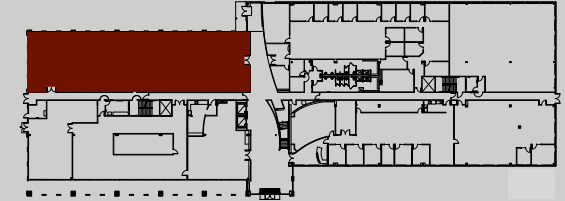
Premier Suburban Office Campus in the Highway 50 Corridor

White Rock Corporate Campus

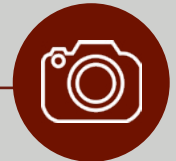
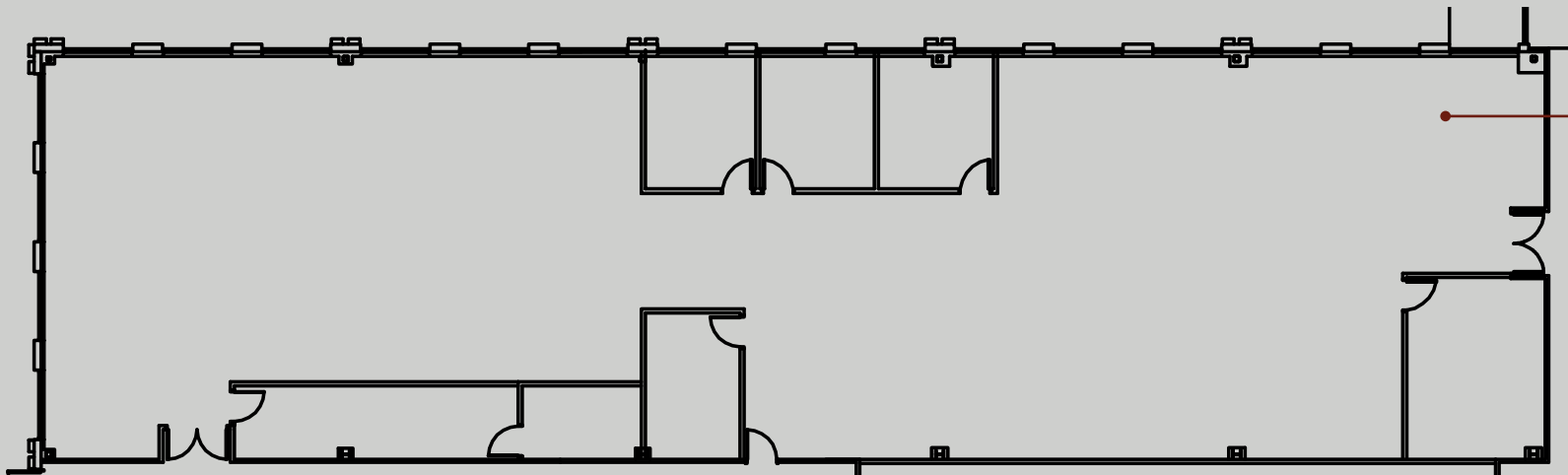


WhiteRockCampus.com

6,967 RSF
SUITE 180B



Building **E**xplore
10850 Gold Center Dr
First Floor



**CLICK HERE
FOR PHOTOS**

Suite 180B



EXCLUSIVELY MARKETING BY:

Todd Eschelmann
916.569.2347
teschelmann@ngkf.com
CA RE License #01051148

Kirk Lange
916.569.2331
klange@ngkf.com
CA RE License #00870331

Jack Blackmon
916.569.2372
jack.blackmon@ngkf.com
CA RE License #01999561

Premier Suburban Office Campus in the Highway 50 Corridor

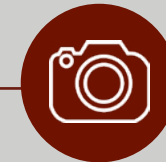
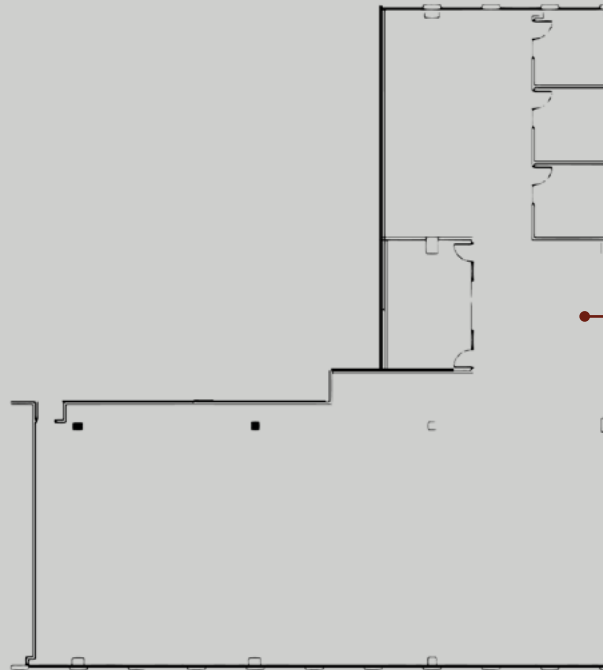
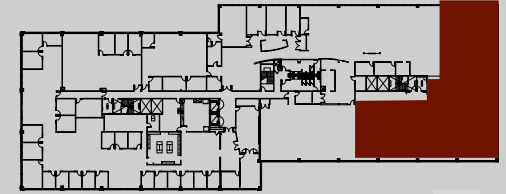
White Rock Corporate Campus



WhiteRockCampus.com

8,198 RSF
SUITE 280

Building **E**xplore
10850 Gold Center Dr
Second Floor



**CLICK HERE
FOR PHOTOS**

Suite 280

EXCLUSIVELY MARKETING BY:



Todd Eschelman
916.569.2347
teschelman@ngkf.com
CA RE License #01051148

Kirk Lange
916.569.2331
klange@ngkf.com
CA RE License #00870331

Jack Blackmon
916.569.2372
jack.blackmon@ngkf.com
CA RE License #01999561

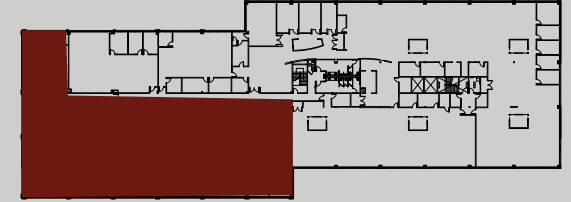
Premier Suburban Office Campus in the Highway 50 Corridor

White Rock Corporate Campus

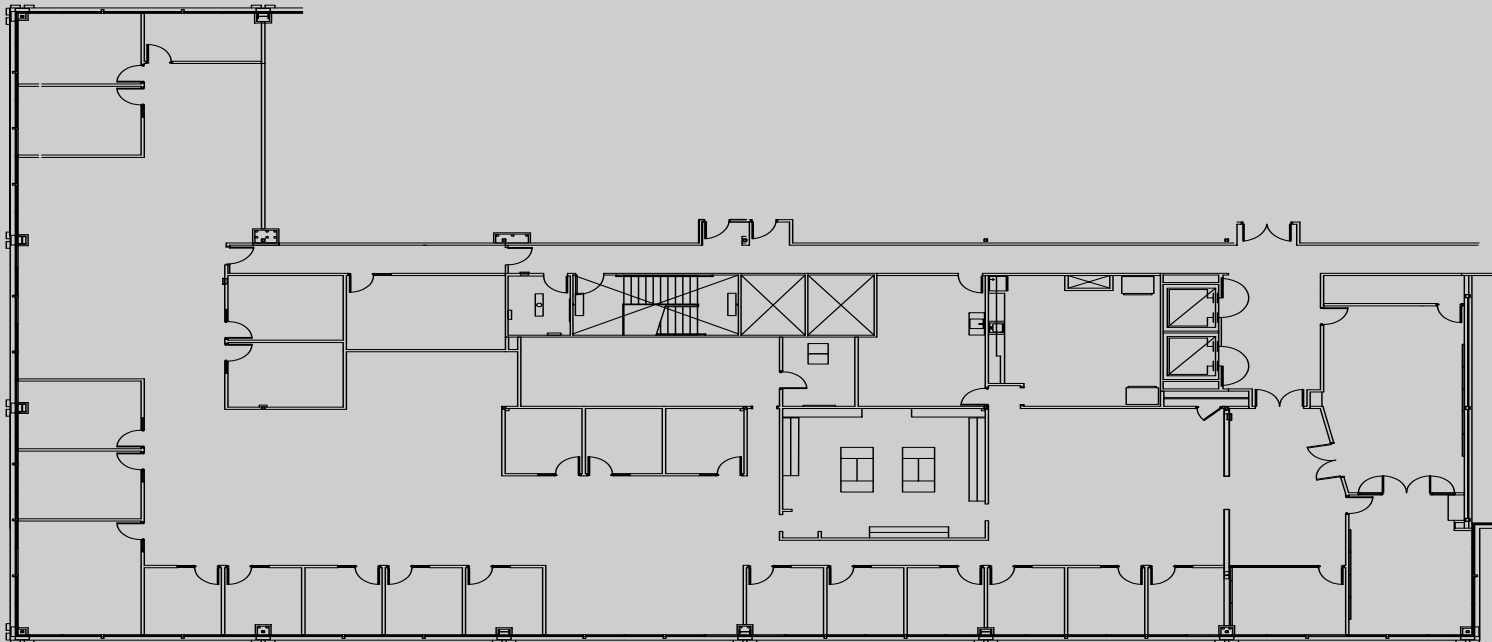


WhiteRockCampus.com

8,198 RSF
SUITE 350



Building **E**xplore
10850 Gold Center Dr
Third Floor



EXCLUSIVELY MARKETED BY:

Todd Eschelman
916.569.2347
teschelman@ngkf.com
CA RE License #01051148

Kirk Lange
916.569.2331
klange@ngkf.com
CA RE License #00870331

Jack Blackmon
916.569.2372
jack.blackmon@ngkf.com
CA RE License #01999561

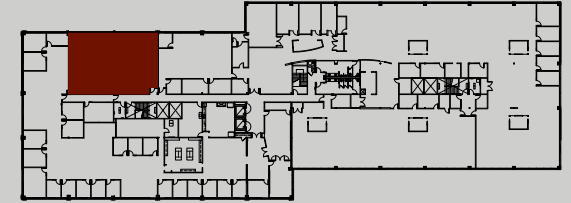
Premier Suburban Office Campus in the Highway 50 Corridor

White Rock Corporate Campus

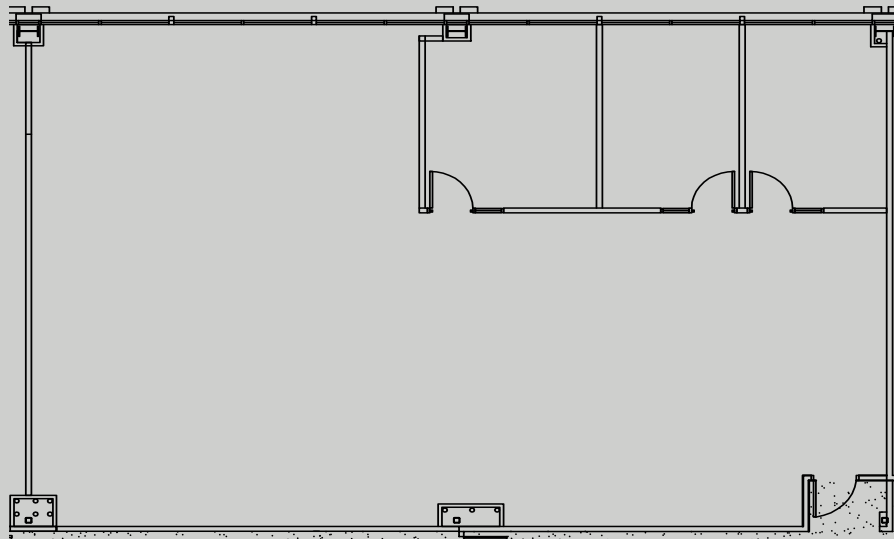


WhiteRockCampus.com

2,721 RSF
SUITE 375



Building **E**xplore
10850 Gold Center Dr
Third Floor



EXCLUSIVELY MARKETED BY:

Todd Eschelman
916.569.2347
teschelman@ngkf.com
CA RE License #01051148

Kirk Lange
916.569.2331
klange@ngkf.com
CA RE License #00870331

Jack Blackmon
916.569.2372
jack.blackmon@ngkf.com
CA RE License #01999561

Premier Suburban Office Campus in the Highway 50 Corridor

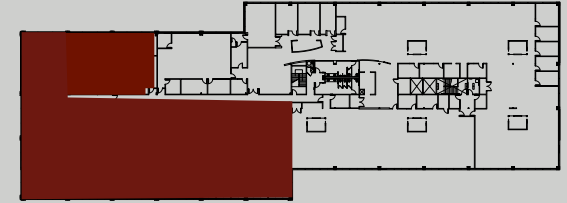
White Rock Corporate Campus



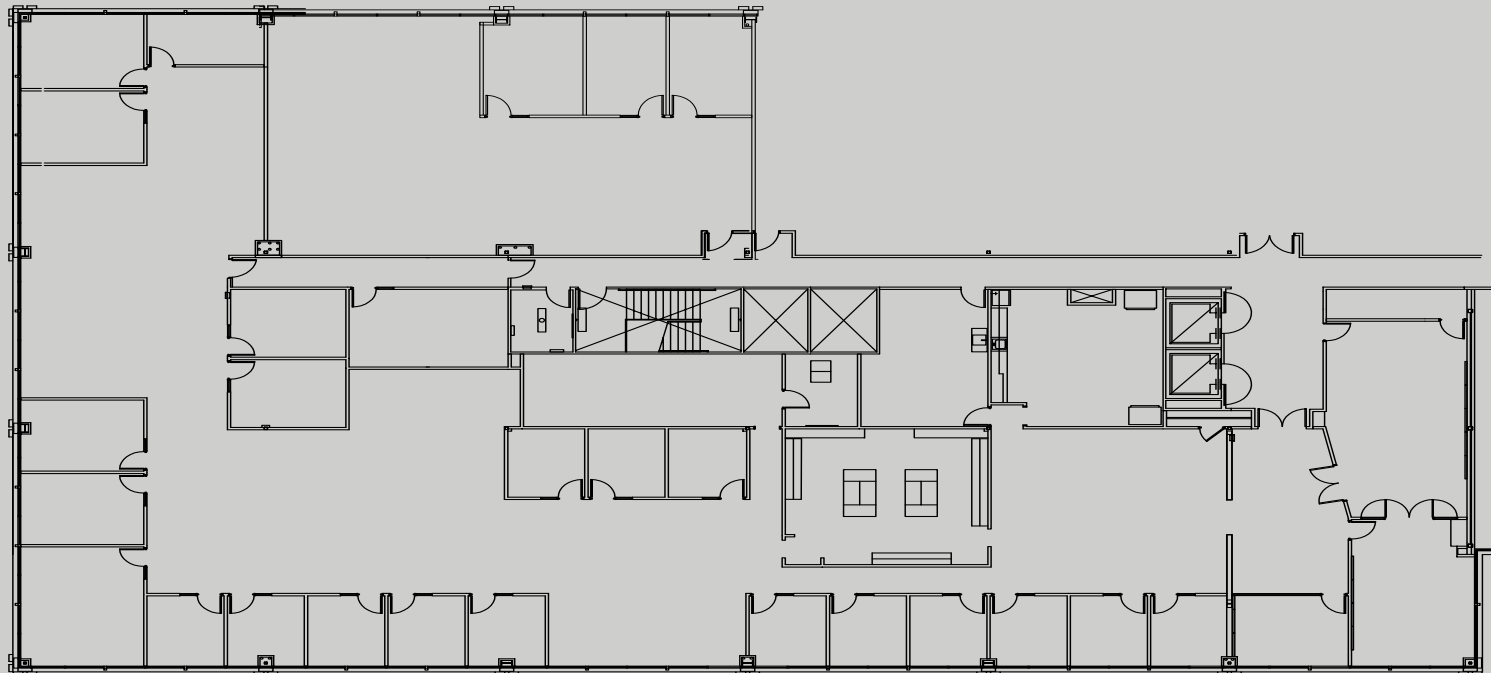
WhiteRockCampus.com

16,247 RSF

SUITE 350 & 375 (Combined)



Building **E**xplore
10850 Gold Center Dr
Third Floor



EXCLUSIVELY MARKETED BY:

Todd Eschelman
916.569.2347
teschelman@ngkf.com
CA RE License #01051148

Kirk Lange
916.569.2331
klange@ngkf.com
CA RE License #00870331

Jack Blackmon
916.569.2372
jack.blackmon@ngkf.com
CA RE License #01999561

