

Class A 75,000 Square Foot Professional Office Building

Exposition Centre

Convenient Central Location in the Heart of Sacramento



EXCLUSIVELY MARKETING BY: **Todd Eschelman**
916.569.2347
teschelman@ngkf.com
CA RE License #01051148

Kirk Lange
916.569.2331
klange@ngkf.com
CA RE License #00870313

Jack Blackmon
916.569.2372
jack.blackmon@ngkf.com
CA RE License #01999561



Timeless brick and glass architecture



Units from ±603 RSF - ±6,442 RSF

- Onsite conference room
- Shaded outdoor patio areas
- Located within minutes of Sacramento
- Numerous restaurants and retail services immediately adjacent to the property
- Immediate freeway access to Business Hwy 80
- Short walk to Arden Fair Mall
- Abundant onsite parking free of charge
- Building and monument signage
- Expansive windowline

1601 Response Road, Sacramento, CA Exposition Centre



PointWestPortfolio.com

Five-Story Class A Office Building



EXCLUSIVELY MARKETING BY: **Todd Eschelman**
916.569.2347
teschelman@ngkf.com
CA RE License #01051148

Kirk Lange
916.569.2331
klange@ngkf.com
CA RE License #00870313

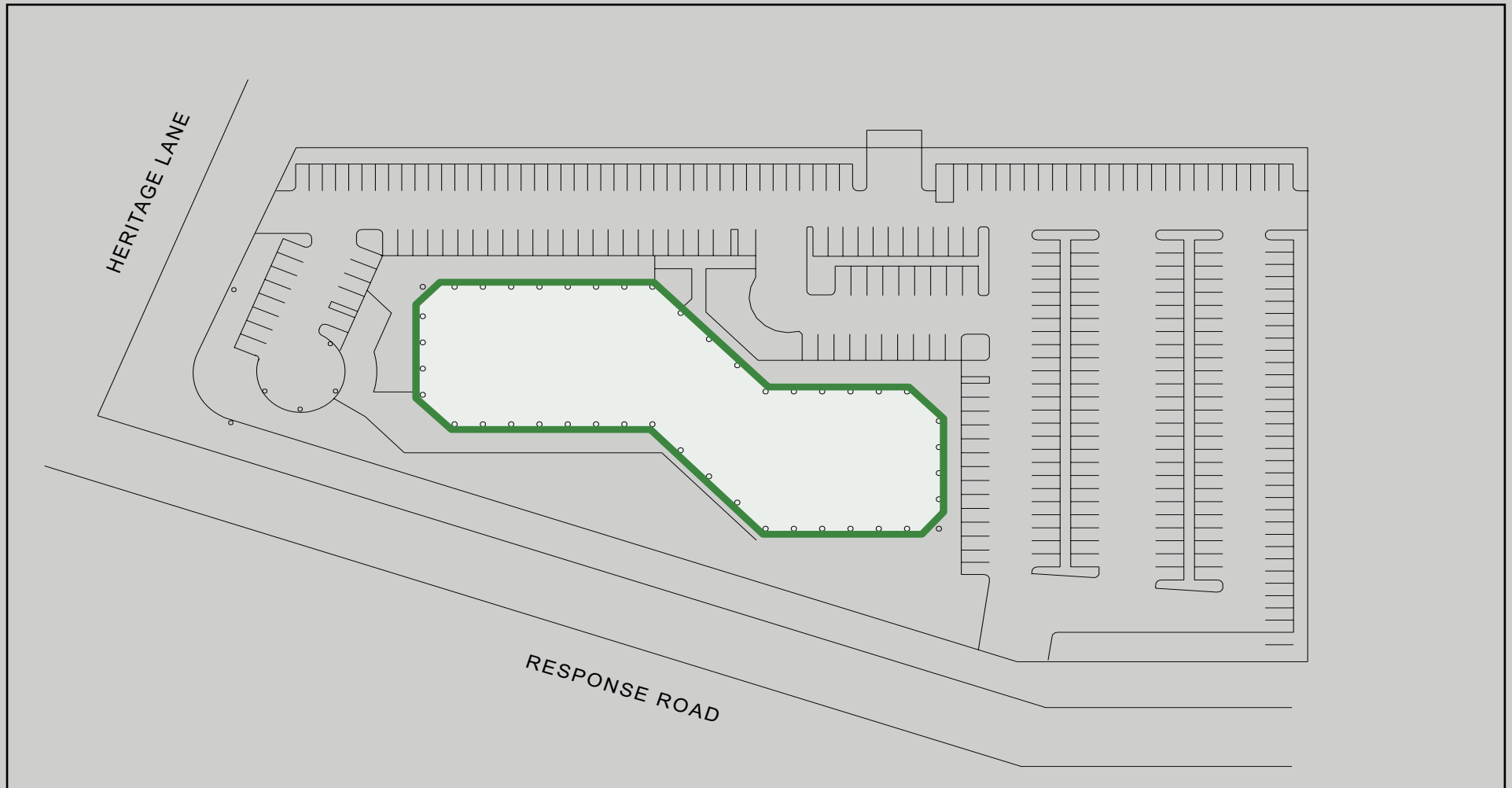
Jack Blackmon
916.569.2372
jack.blackmon@ngkf.com
CA RE License #01999561

1601 Response Road, Sacramento, CA Exposition Centre



PointWestPortfolio.com

Site Plan



EXCLUSIVELY MARKETING BY: **Todd Eschelman**
916.569.2347
teschelman@ngkf.com
CA RE License #01051148

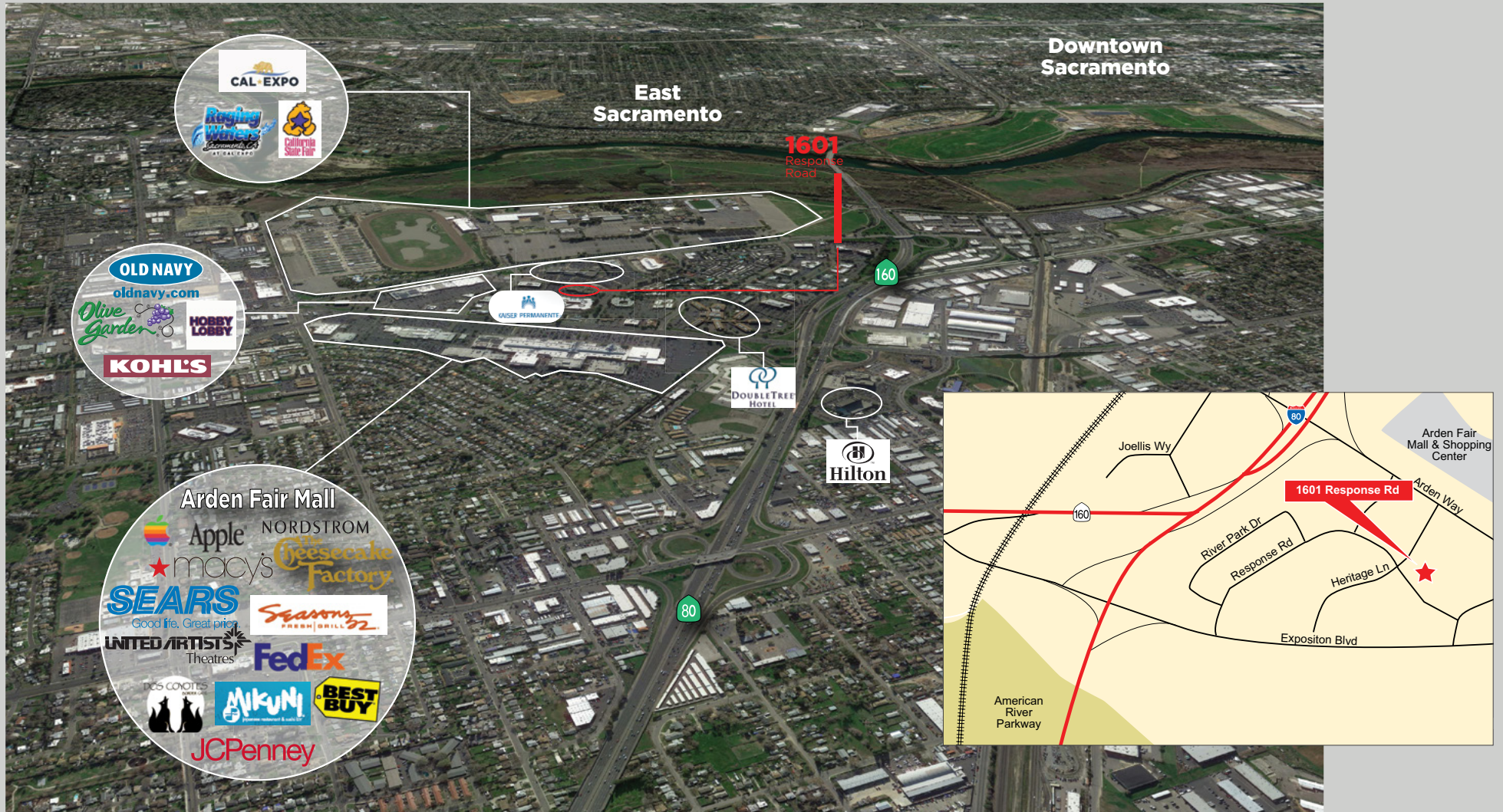
Kirk Lange
916.569.2331
klange@ngkf.com
CA RE License #00870313

Jack Blackmon
916.569.2372
jack.blackmon@ngkf.com
CA RE License #01999561

1601 Response Road, Sacramento, CA Exposition Centre

PointWestPortfolio.com

Amenities Aerial & Location Map



EXCLUSIVELY MARKETED BY: **Todd Eschelman**
916.569.2347
teschelma@ngkf.com
CA RE License #01051148

Kirk Lange
916.569.2331
klange@ngkf.com
CA RE License #00870313

Jack Blackmon
916.569.2372
jack.blackmon@ngkf.com
CA RE License #01999561

1601 Response Road, Sacramento, CA

Exposition Centre

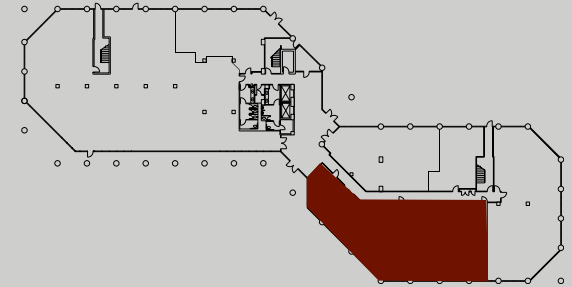
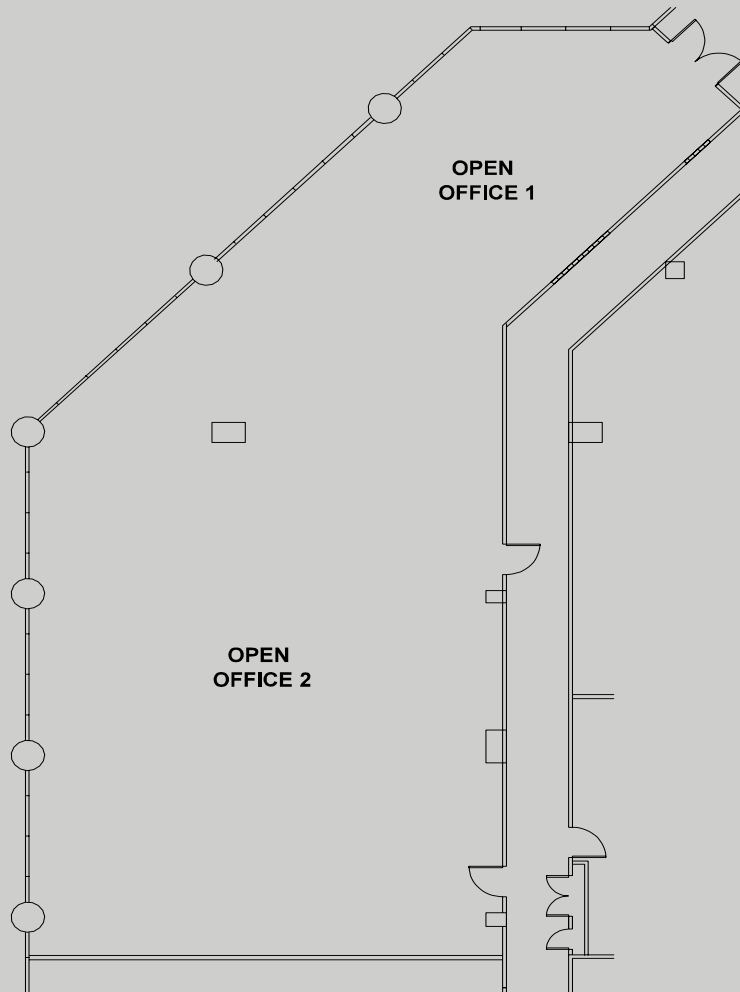


PointWestPortfolio.com

4,006 RSF

SUITE 160

FIRST FLOOR



EXCLUSIVELY MARKETING BY: **Todd Eschelman**
916.569.2347
teschelman@ngkf.com
CA RE License #01051148

Kirk Lange
916.569.2331
klange@ngkf.com
CA RE License #00870313

Jack Blackmon
916.569.2372
jack.blackmon@ngkf.com
CA RE License #01999561

1601 Response Road, Sacramento, CA

Exposition Centre

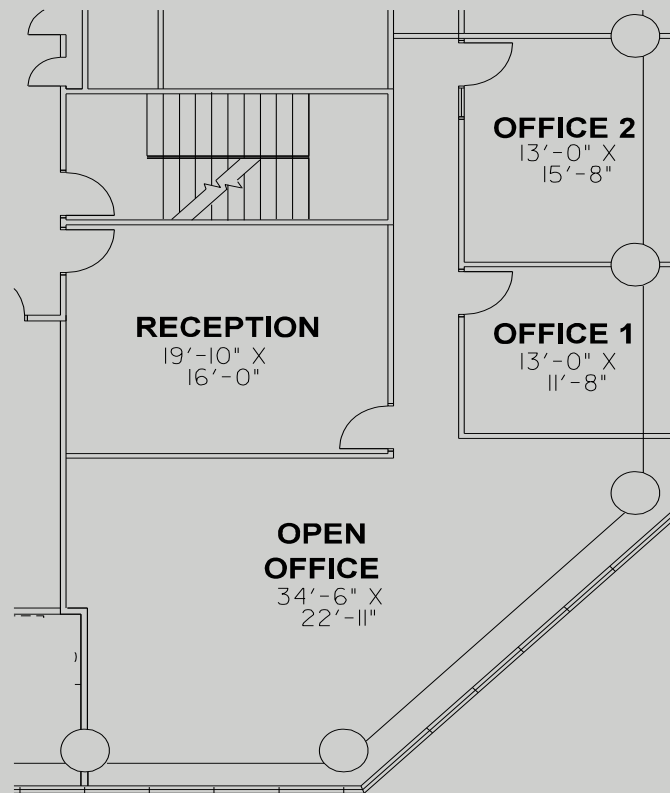
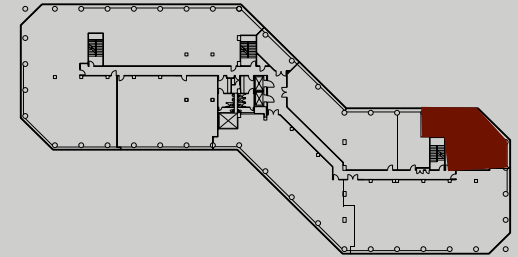


PointWestPortfolio.com

1,744 RSF

SUITE 255

SECOND FLOOR



EXCLUSIVELY MARKETED BY: **Todd Eschelman**
916.569.2347
teschelman@ngkf.com
CA RE License #01051148

Kirk Lange
916.569.2331
klange@ngkf.com
CA RE License #00870313

Jack Blackmon
916.569.2372
jack.blackmon@ngkf.com
CA RE License #01999561

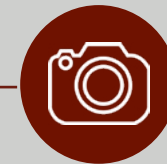
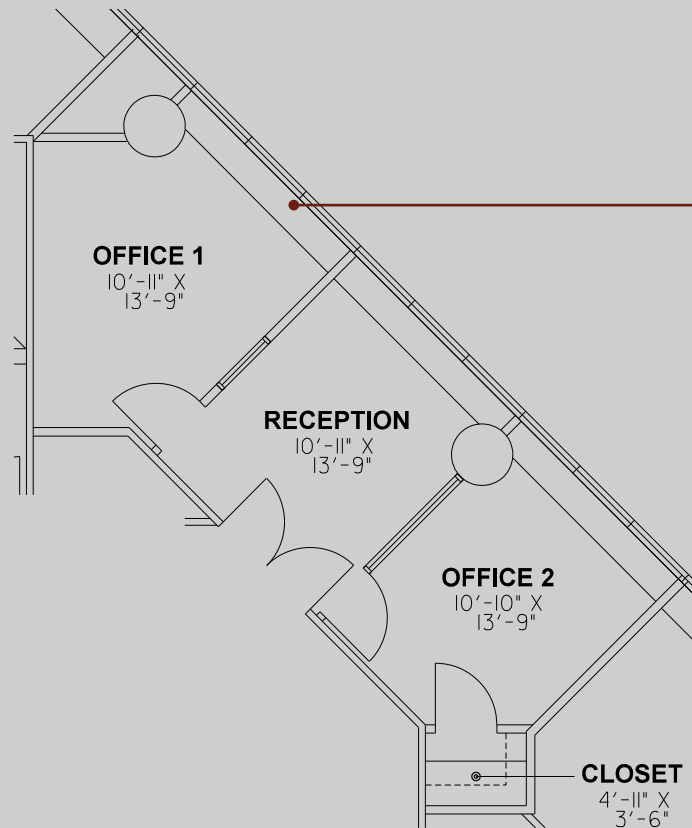
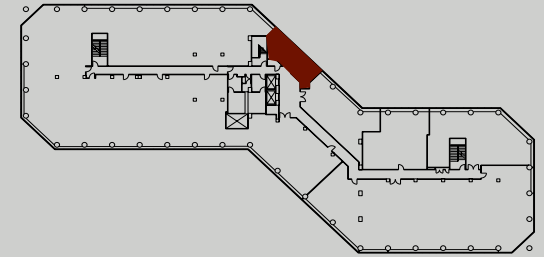
1601 Response Road, Sacramento, CA
Exposition Centre



PointWestPortfolio.com

603 RSF
SUITE 350

THIRD FLOOR



**CLICK HERE
FOR PHOTOS**

Suite 350



EXCLUSIVELY MARKETING BY: **Todd Eschelman**
916.569.2347
teschelman@ngkf.com
CA RE License #01051148

Kirk Lange
916.569.2331
klange@ngkf.com
CA RE License #00870313

Jack Blackmon
916.569.2372
jack.blackmon@ngkf.com
CA RE License #01999561

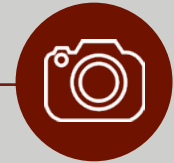
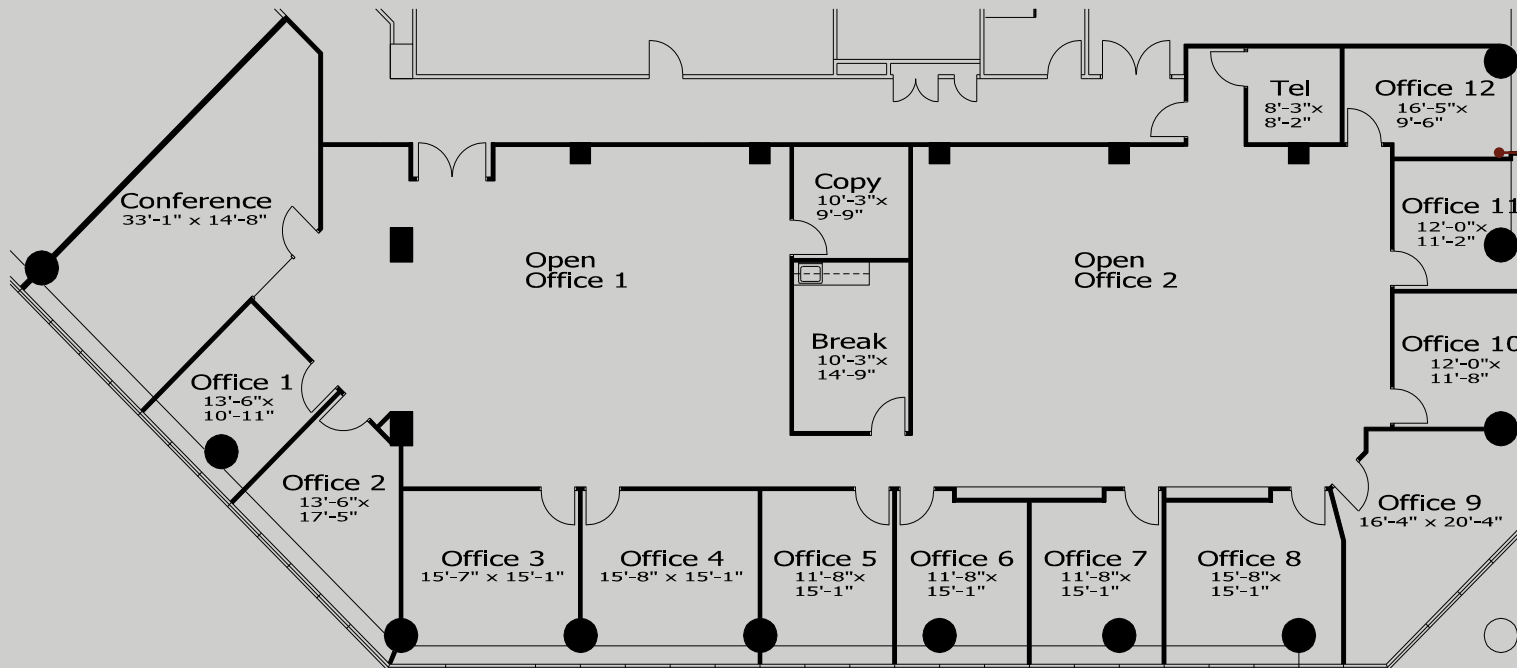
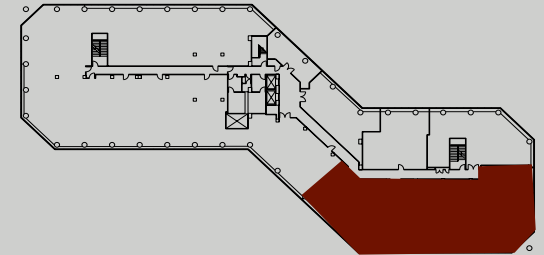
1601 Response Road, Sacramento, CA Exposition Centre



PointWestPortfolio.com

6,442 RSF SUITE 385

THIRD FLOOR



**CLICK HERE
FOR PHOTOS**

Suite 385



EXCLUSIVELY MARKETING BY: **Todd Eschelman**
916.569.2347
teschelman@ngkf.com
CA RE License #01051148

Kirk Lange
916.569.2331
klange@ngkf.com
CA RE License #00870313

Jack Blackmon
916.569.2372
jack.blackmon@ngkf.com
CA RE License #01999561