

FOR LEASE **Petaluma**

# Petaluma Marina Business Center



Virtual  
Tour



## **NEW BROKER/TENANT INCENTIVE!**

- *For any 3,000 SF or larger Leases signed by 3/31/2021:*
  - *Tenant receives 1 month FREE for every year leased*
  - *Broker receives a FULL FEE*
- *Call listing agents to learn more*

Class "A" Suites For Lease from ±798 - 3,789 SF

  
BASIN STREET  
PROPERTIES



# FOR LEASE **Petaluma** Petaluma Marina Business Center

[www.PetalumaMarinaBusinessCenter.com](http://www.PetalumaMarinaBusinessCenter.com) | [www.DBREA.com](http://www.DBREA.com)

Vibrant Space on the  
Marina in the heart of  
Petaluma

Type:  
Office

Address:  
755, 765 & 775 Baywood Drive  
Petaluma, CA

Total SF  
131,109

# of Floors  
3 Buildings:  
One - 3 Story  
One - 3 Story  
One - 3 Story



Virtual  
Tour

## DESCRIPTION

- Newly refurbished spaces – ready for immediate occupancy
- Convenient access & visibility from Highways 101 and 116; 11 miles to Highway 37
- Outstanding work environment with marina and mountain views
- Operable windows & card-key access system
- Abundant parking
- On-Site cafe
- Located adjacent to Sheraton Hotel, conference center & restaurant
- On-Site property management & facility engineer
- Wired with comcast high-speed internet connectivity
- Swift decision-making & uncomplicated negotiations by local, reputable ownership



# FOR LEASE **Petaluma** **Petaluma Marina Business Center**



[www.PetalumaMarinaBusinessCenter.com](http://www.PetalumaMarinaBusinessCenter.com) | [www.DBREA.com](http://www.DBREA.com)



EXCLUSIVELY MARKETING BY THE DOWLING-BRACCO TEAM OF JLL | [WWW.DBREA.COM](http://WWW.DBREA.COM) | 707.421.2900

**Tony Sarno**  
707.217.7196  
RE License# 01430933

**Jordan Lazor**  
415.595.5102  
RE License# 02011117

**Chris Tewhill**  
415.747.0798  
RE License# 02034376

**Glen Dowling**  
707.227.7800  
RE License# 0890450

Jones Lang LaSalle Brokerage, Inc.  
Real Estate License#: 01856260

FOR LEASE **Petaluma**  
**Petaluma Marina Business Center**



[www.PetalumaMarinaBusinessCenter.com](http://www.PetalumaMarinaBusinessCenter.com) | [www.DBREA.com](http://www.DBREA.com)



EXCLUSIVELY MARKETING BY THE DOWLING-BRACCO TEAM OF JLL | [WWW.DBREA.COM](http://WWW.DBREA.COM) | 707.421.2900

**Tony Sarno**  
707.217.7196  
RE License# 01430933

**Jordan Lazor**  
415.595.5102  
RE License# 02011117

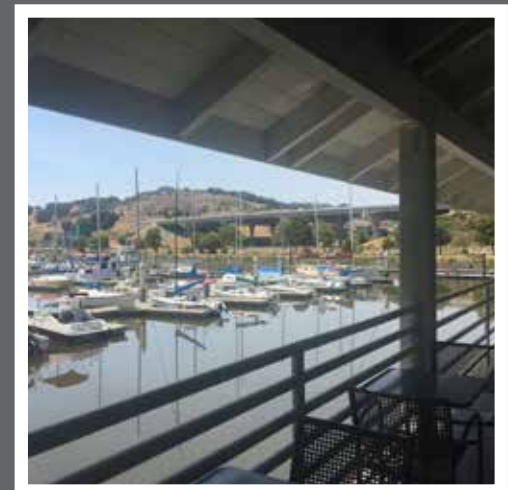
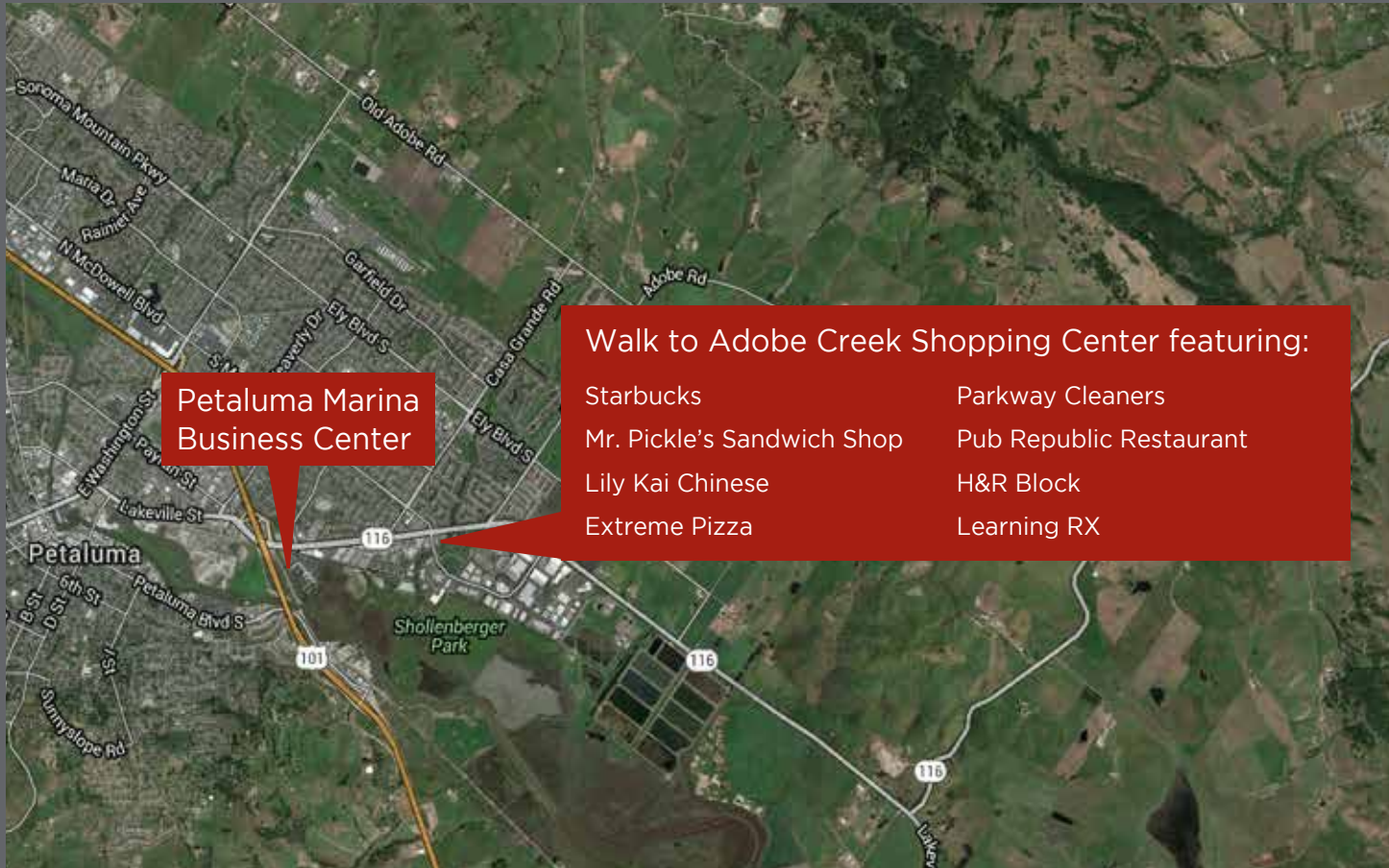
**Chris Tewhill**  
415.747.0798  
RE License# 02034376

**Glen Dowling**  
707.227.7800  
RE License# 0890450

FOR LEASE Petaluma

# Petaluma Marina

[www.PetalumaMarinaBusinessCenter.com](http://www.PetalumaMarinaBusinessCenter.com) | [www.DBREA.com](http://www.DBREA.com)

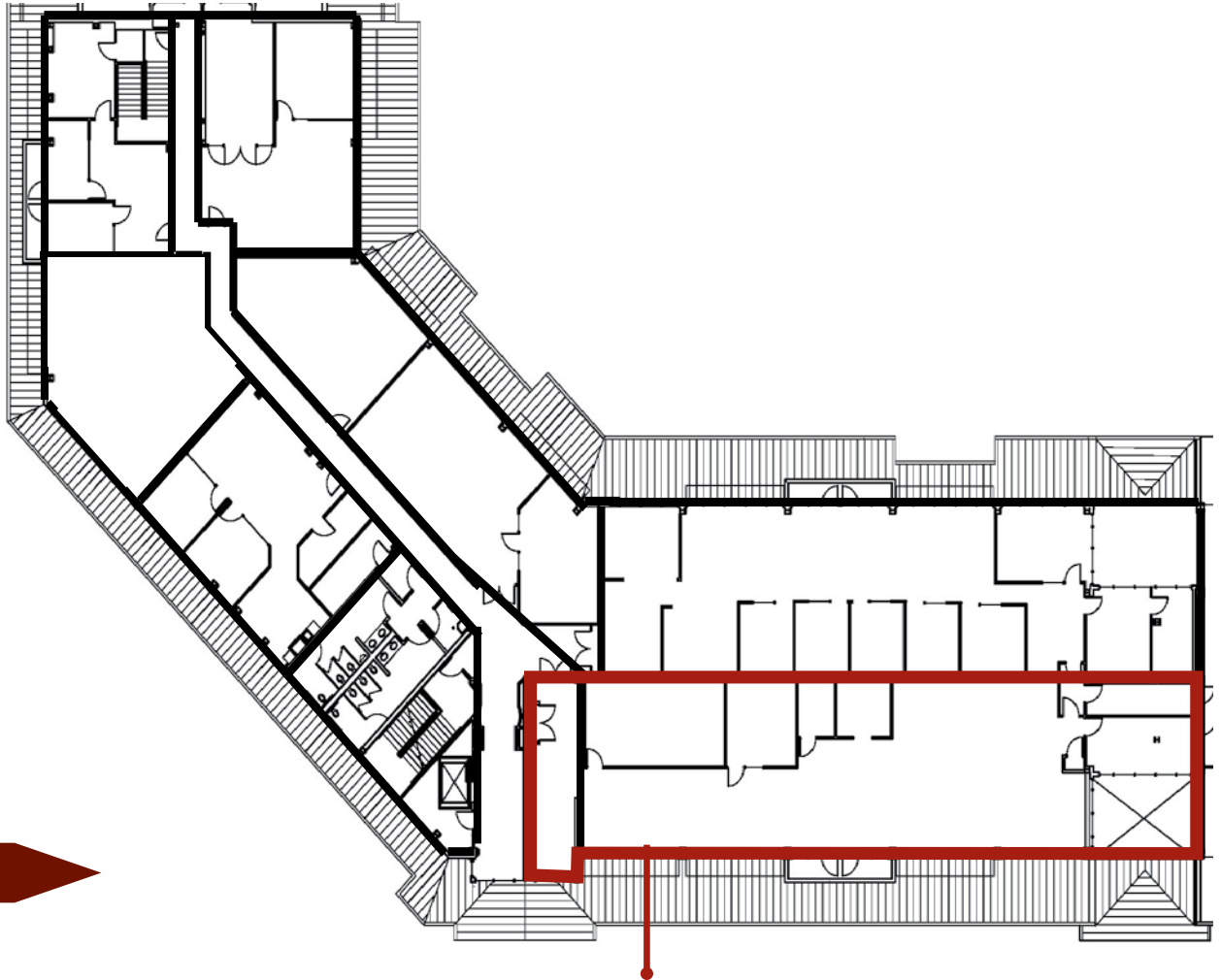


FOR LEASE **Petaluma**  
**Petaluma Marina Business Center**



[www.PetalumaMarinaBusinessCenter.com](http://www.PetalumaMarinaBusinessCenter.com) | [www.DBREA.com](http://www.DBREA.com)

**755 Baywood Drive**  
Third Floor



**RENT INCENTIVE**

- Tenant to pay on 2,000 SF for the first three years of a five year lease

**Suite 390: 3,789 SF**



EXCLUSIVELY MARKETING BY THE DOWLING-BRACCO TEAM OF JLL | [WWW.DBREA.COM](http://WWW.DBREA.COM) | 707.421.2900

**Tony Sarno**  
707.217.7196  
RE License# 01430933

**Jordan Lazor**  
415.595.5102  
RE License# 02011117

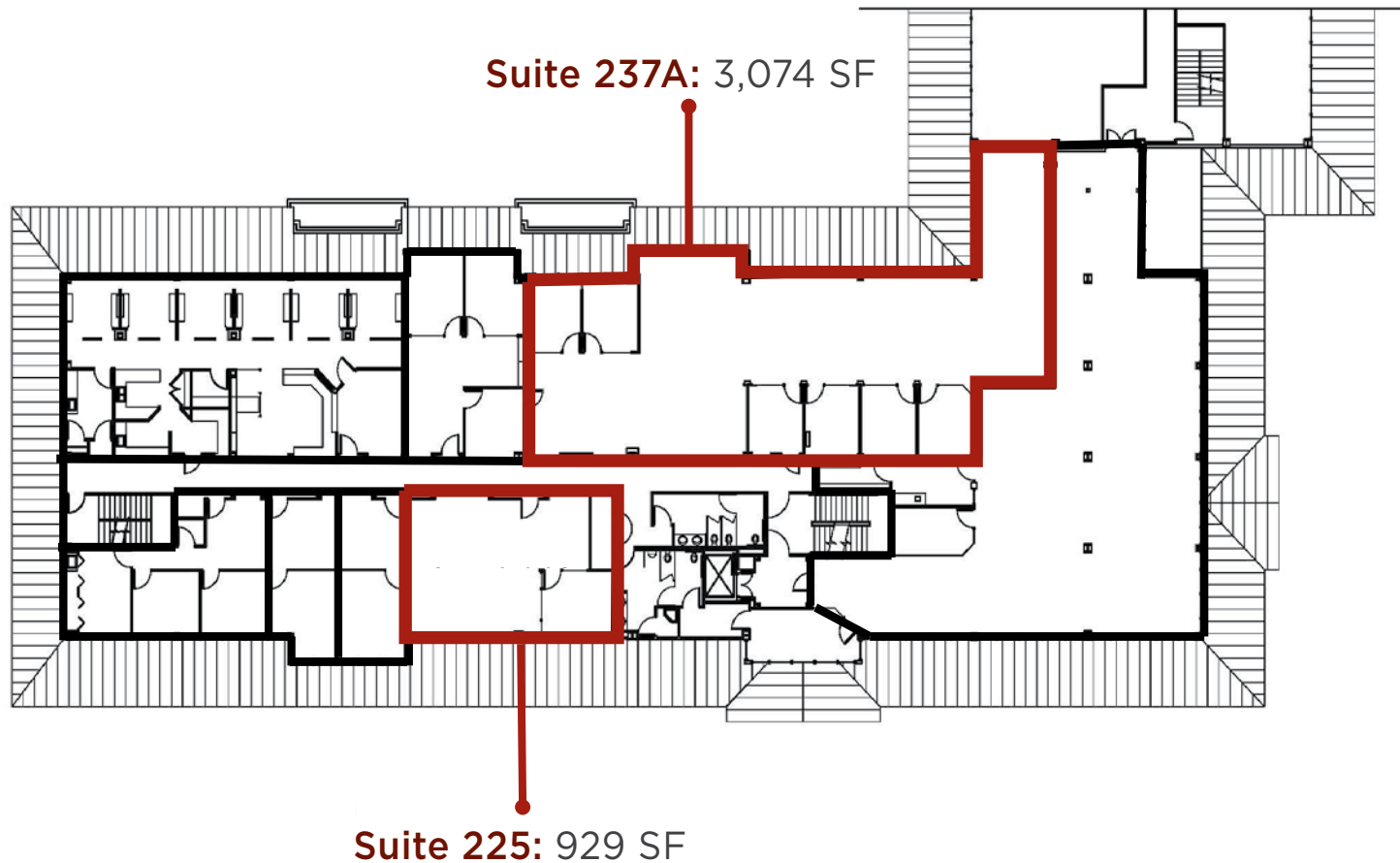
**Chris Tewhill**  
415.747.0798  
RE License# 02034376

**Glen Dowling**  
707.227.7800  
RE License# 0890450

FOR LEASE **Petaluma**  
**Petaluma Marina Business Center**

[www.PetalumaMarinaBusinessCenter.com](http://www.PetalumaMarinaBusinessCenter.com) | [www.DBREA.com](http://www.DBREA.com)

**765 Baywood Drive**  
Second Floor



EXCLUSIVELY MARKETING BY THE DOWLING-BRACCO TEAM OF JLL | [WWW.DBREA.COM](http://WWW.DBREA.COM) | 707.421.2900

**Tony Sarno**  
707.217.7196  
RE License# 01430933

**Jordan Lazor**  
415.595.5102  
RE License# 02011117

**Chris Tewhill**  
415.747.0798  
RE License# 02034376

**Glen Dowling**  
707.227.7800  
RE License# 0890450