

FOR LEASE **Petaluma**

# Theatre District Office & Retail

**CLICK HERE FOR MORE INFO  
ON NEW LEASING INCENTIVES!**

- FULL FEE FOR PROCURING BROKERS
- TOUR INCENTIVES



Vibrant, Class "A" Office & Retail Spaces For Lease | Petaluma, CA

  
BASIN STREET  
PROPERTIES



# FOR LEASE **Petaluma** Theatre District Office & Retail

Theatre Square is  
Petaluma's premier  
downtown location, in the  
center of it all

Type:  
Office & Retail

Address:  
151 Second Street  
140 Second Street  
Petaluma, CA

Total SF:  
140,755

Local and regional favorite  
Sol Food opening 2021

## DESCRIPTION

- Prompt decision-making & uncomplicated negotiations by local, reputable owner
- Class 'A' building with high-quality finishes throughout
- Abundant and convenient parking nearby
- Men's and women's shower/lockers for office tenants
- Operable windows
- Annual average daily traffic count at D Street & 1st Street is approximately 18,371\*





# FOR LEASE **Petaluma** Theatre District Office & Retail



©2021 Jones Lang LaSalle IP, Inc. All rights reserved. All information contained herein is from sources deemed reliable; however, no representation or warranty is made to the accuracy thereof.



EXCLUSIVELY MARKETING BY THE DOWLING-BRACCO TEAM OF JLL | 707.421.2900

**Tony Sarno**  
707.217.7196  
RE License# 01430933

**Jordan Lazor**  
415.595.5102  
RE License# 0201117

**Chris Tewhill**  
415.747.0798  
RE License# 02034376

**Glen Dowling**  
707.227.7800  
RE License# 0890450

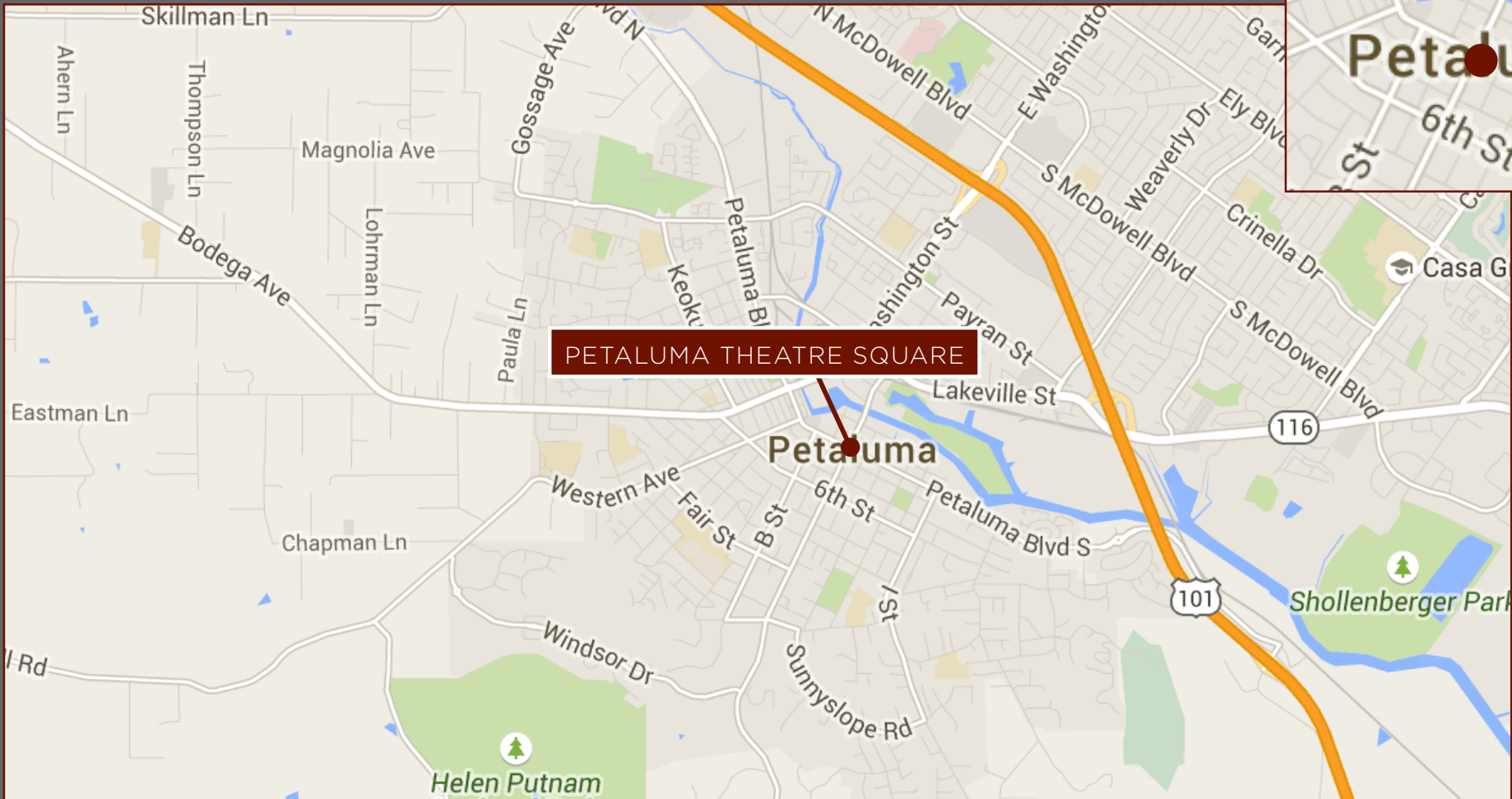
Jones Lang LaSalle Brokerage, Inc.  
Real Estate License # 01856260

# FOR LEASE Petaluma Theatre District

Working in Petaluma has never been easier

## Demographics:

	1 mile	2 miles	3 miles
Population	15,831	45,353	65,053
Avg. HH Income	\$99,724	\$103,853	\$111,881
Daytime Population	18,743	41,583	62,063



EXCLUSIVELY MARKETING BY THE DOWLING-BRACCO TEAM OF JLL | 707.421.2900

**Tony Sarno**  
707.217.7196  
RE License# 01430933

**Jordan Lazor**  
415.595.5102  
RE License# 0201117

**Chris Tewhill**  
415.747.0798  
RE License# 02034376

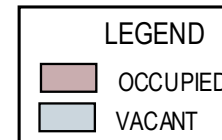
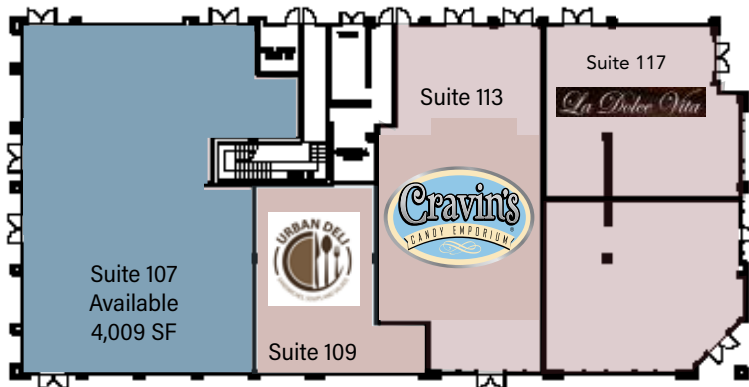
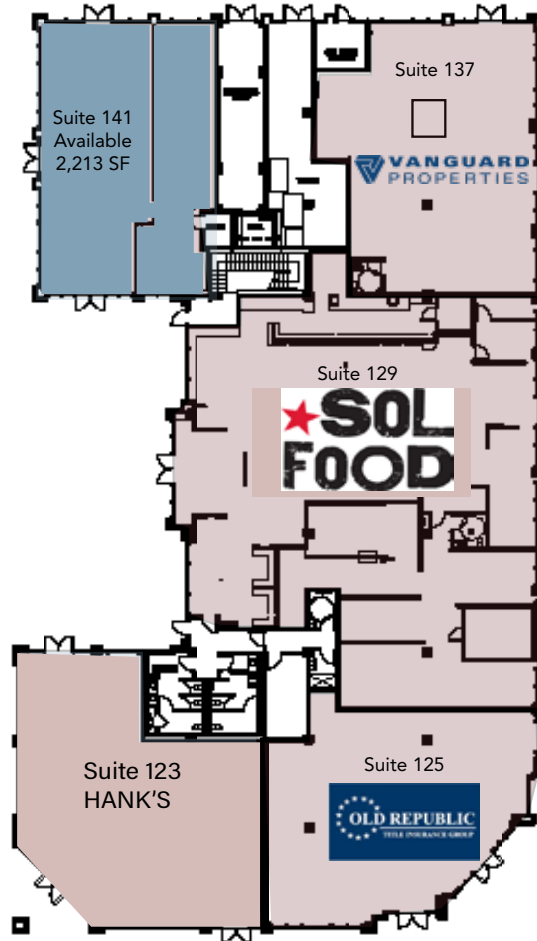
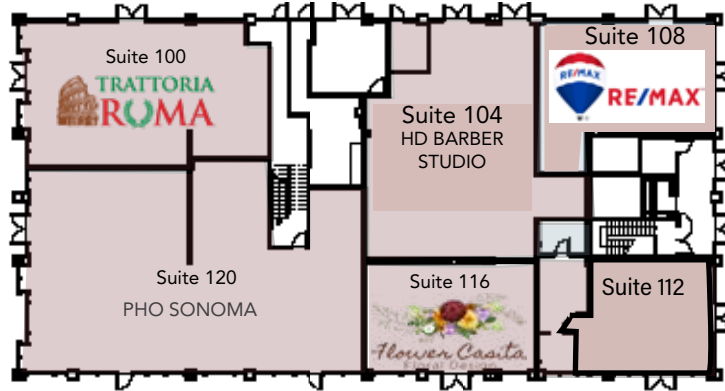
**Glen Dowling**  
707.227.7800  
RE License# 0890450





# FOR LEASE | Theatre District Office & Retail 140 Second Street | Petaluma, CA

## Retail First Floor



EXCLUSIVELY MARKETING BY THE DOWLING-BRACCO TEAM OF JLL | 707.421.2900



**Tony Sarno**  
707.217.7196  
RE License# 01430933

**Jordan Lazor**  
415.595.5102  
RE License# 0201117

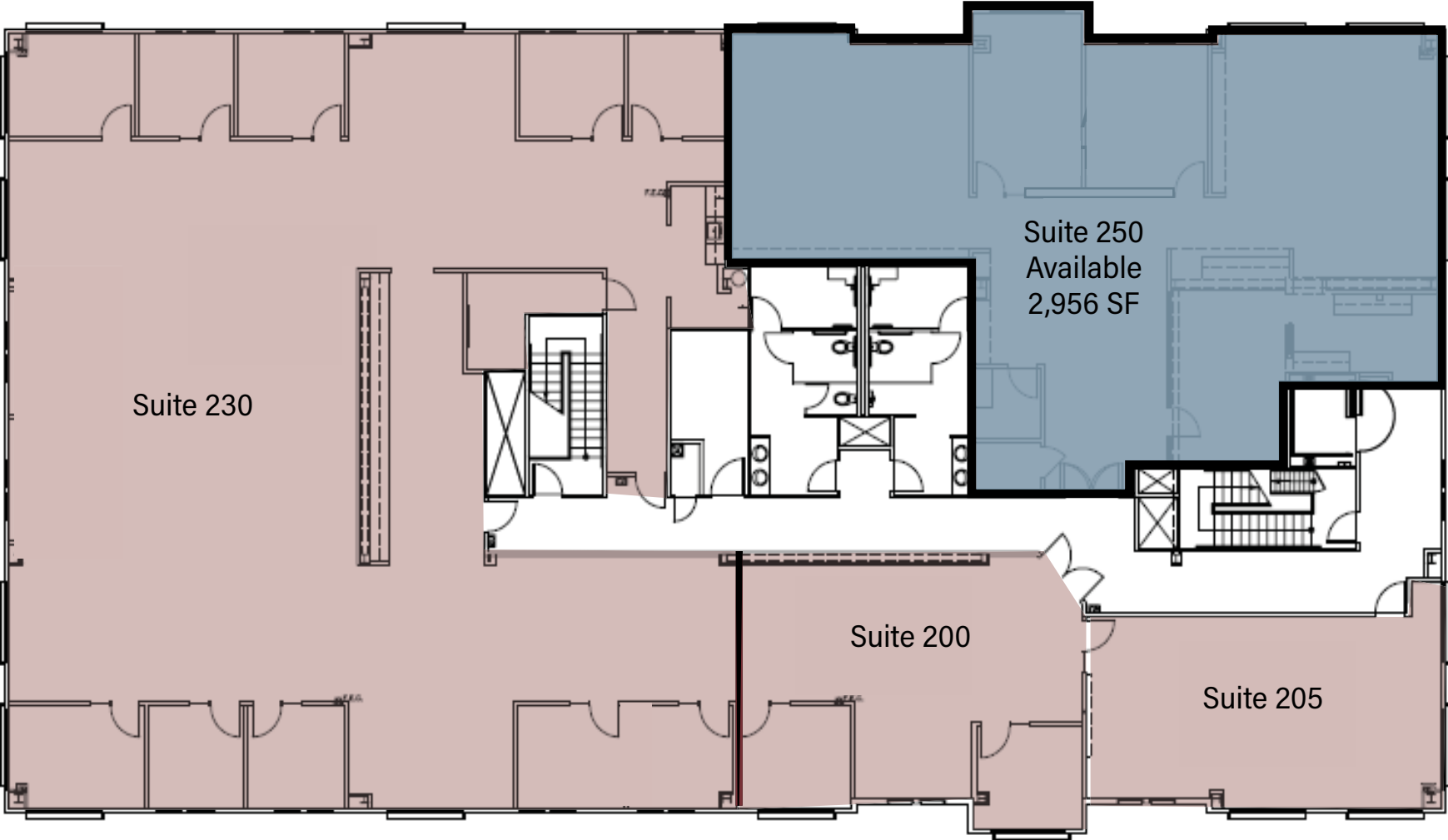
**Chris Tewhill**  
415.747.0798  
RE License# 02034376

**Glen Dowling**  
707.227.7800  
RE License# 0890450

FOR LEASE | Theatre District Office & Retail  
140 Second Street | Petaluma, CA



Second Floor



EXCLUSIVELY MARKETING BY THE DOWLING-BRACCO TEAM OF JLL | 707.421.2900

**Tony Sarno**  
707.217.7196  
RE License# 01430933

**Jordan Lazor**  
415.595.5102  
RE License# 0201117

**Chris Tewhill**  
415.747.0798  
RE License# 02034376

**Glen Dowling**  
707.227.7800  
RE License# 0890450