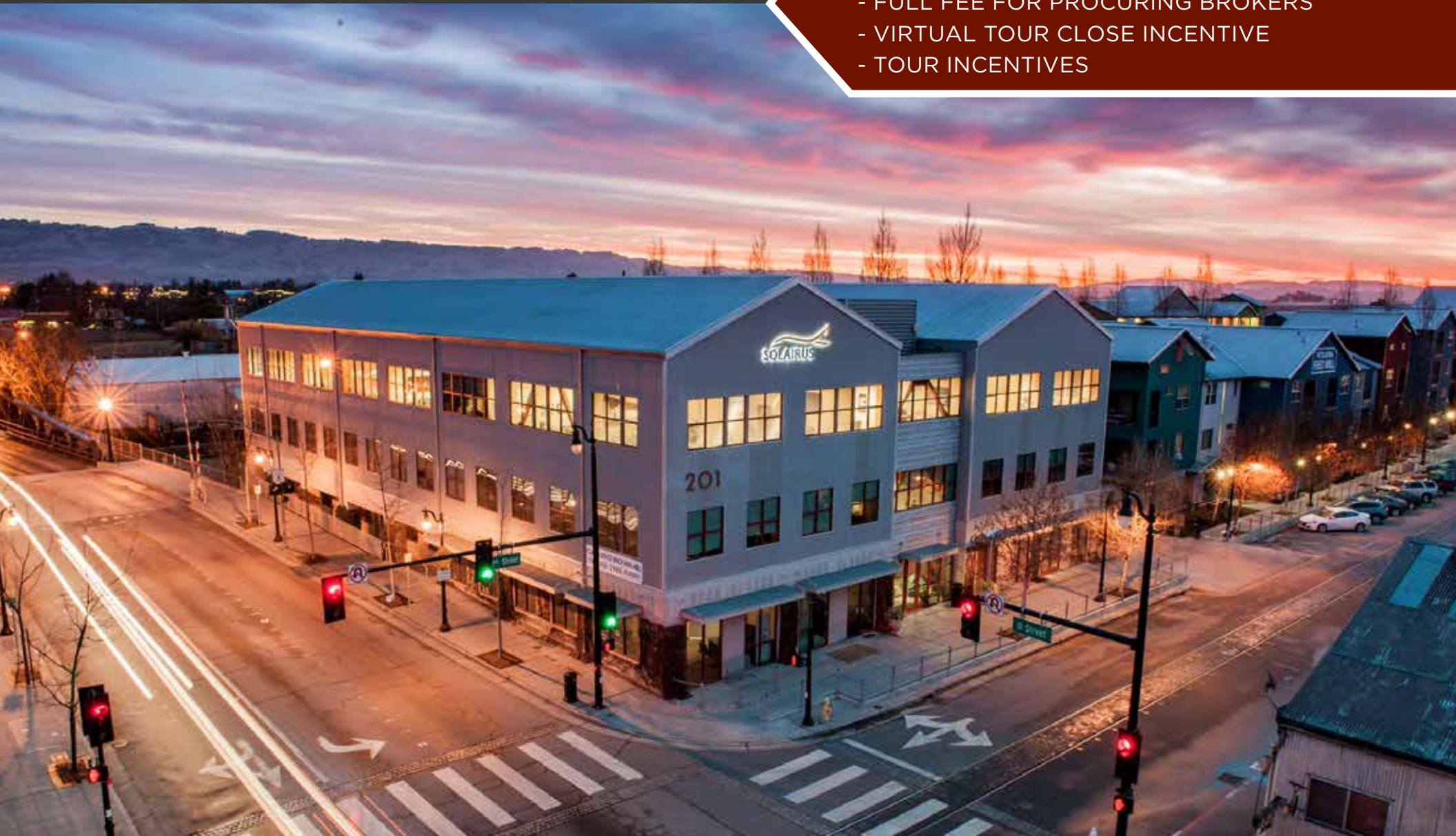


FOR LEASE Petaluma

Waterfront Office

**CLICK HERE FOR MORE INFO
ON NEW LEASING INCENTIVES!**

- FULL FEE FOR PROCURING BROKERS
- VIRTUAL TOUR CLOSE INCENTIVE
- TOUR INCENTIVES



±5,866 SF Class “A” Office Space Available in Downtown Petaluma


BASIN STREET
PROPERTIES

 JLL

FOR LEASE **Petaluma** Waterfront Office

www.DBREA.com

Vibrant Office Space
in the Theatre District
Overlooking
the Petaluma River

Type:
Office

Address:
201 First Street
Petaluma, CA

Total SF:
50,755

DESCRIPTION

- Class 'A' building with high-quality finishes throughout
- Premier downtown location, in the center of it all
- Short walking distance to all downtown amenities, restaurants and shopping
- Abundant and convenient parking nearby
- Professional and responsive property management
- Men's and women's shower/lockers
- Petaluma River and mountain views



FOR LEASE Petaluma Waterfront Office



www.DBREA.com



EXCLUSIVELY MARKETING BY THE DOWLING-BRACCO TEAM OF JLL | WWW.DBREA.COM | 707.421.2900

Tony Sarno
707.217.7196
RE License# 01430933

Jordan Lazor
415.595.5102
RE License# 0201117

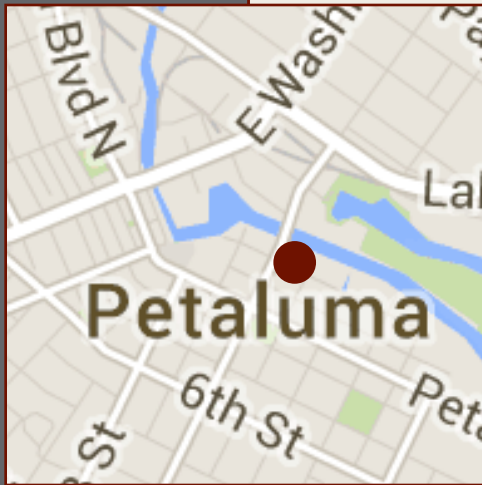
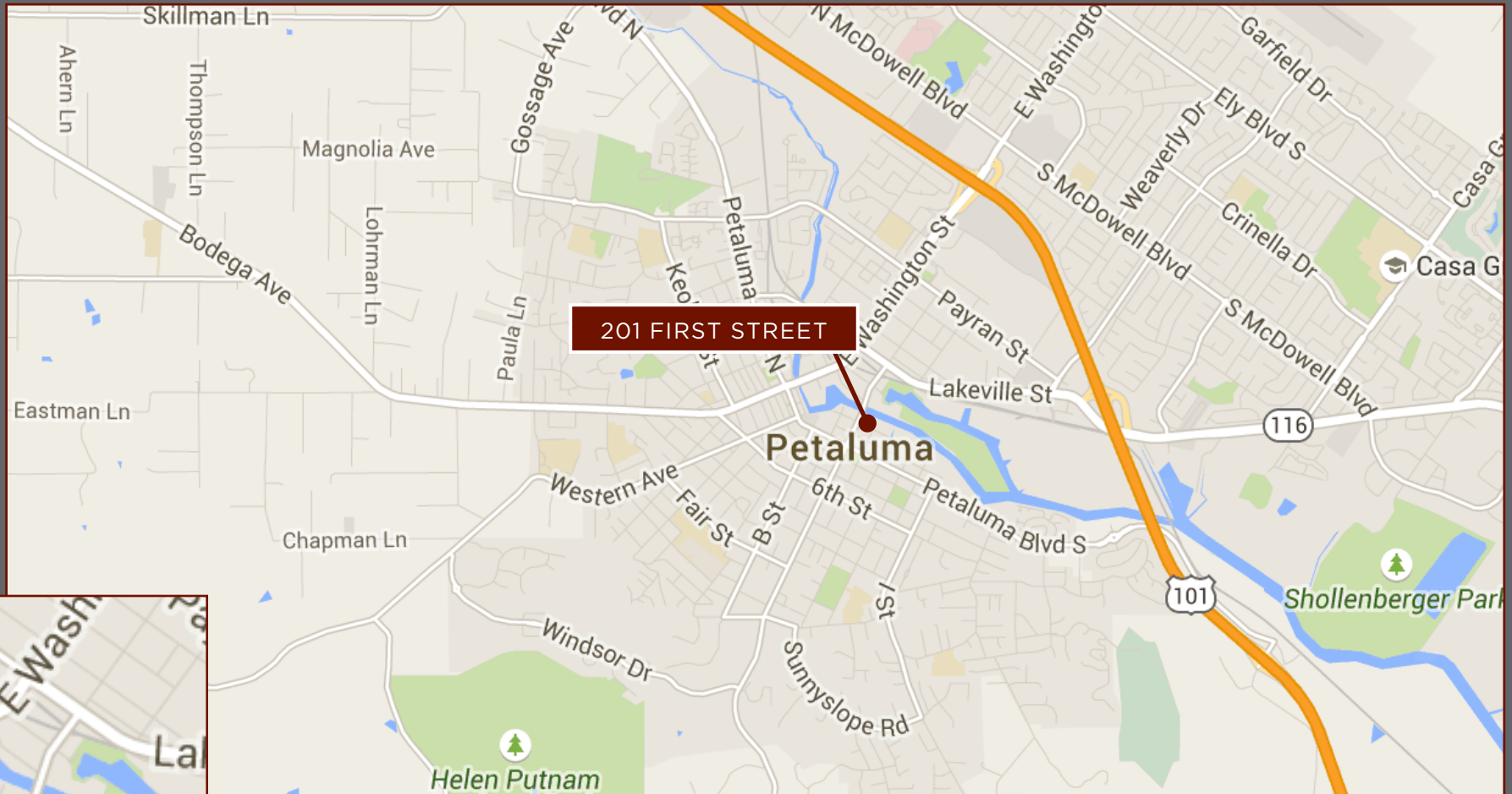
Chris Tewhill
415.747.0798
RE License# 02034376

Glen Dowling
707.227.7800
RE License# 0890450

FOR LEASE **Petaluma**

Waterfront Office Location Map

www.DBREA.com



EXCLUSIVELY MARKETING BY THE DOWLING-BRACCO TEAM OF JLL | WWW.DBREA.COM | 707.421.2900

Tony Sarno
707.217.7196
RE License# 01430933

Jordan Lazor
415.595.5102
RE License# 0201117

Chris Tewhill
415.747.0798
RE License# 02034376

Glen Dowling
707.227.7800
RE License# 0890450



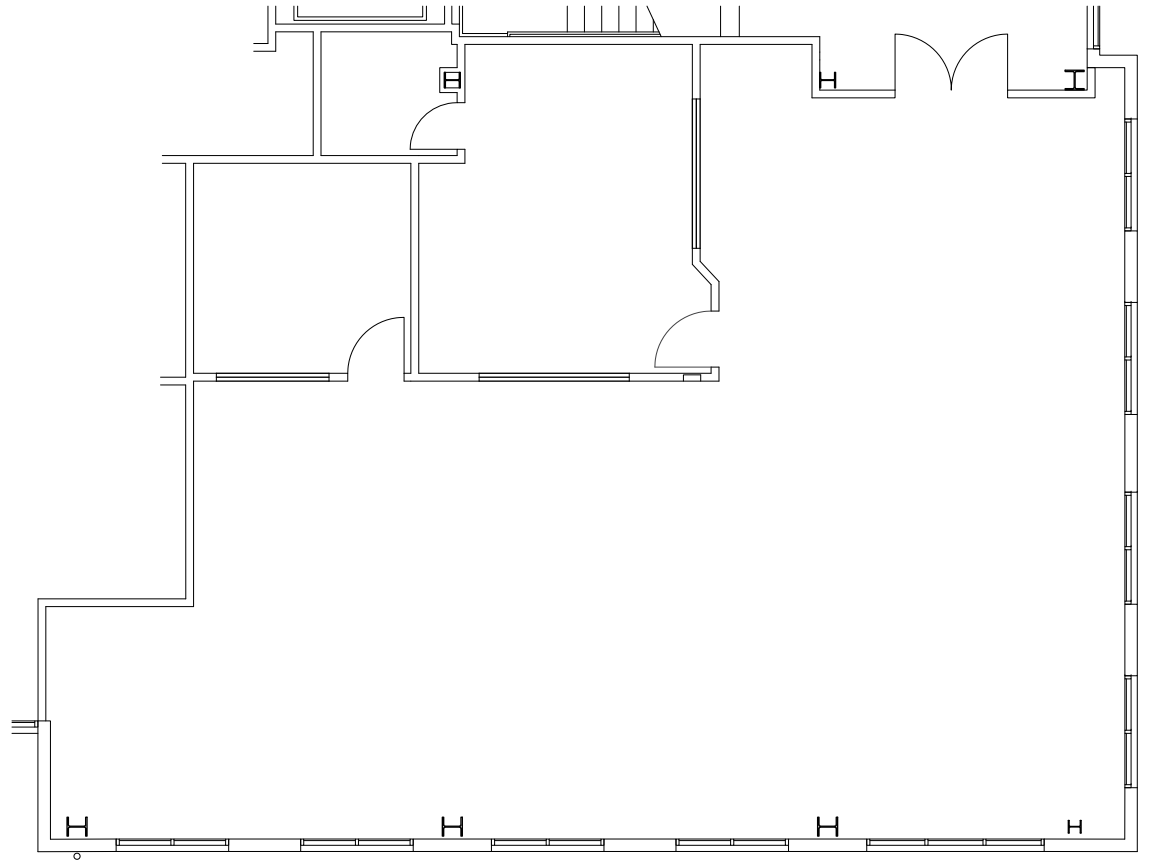
FOR LEASE Petaluma Waterfront Office

www.DBREA.com

2,500 RSF
Suite 101

Space Highlights

- Modern, creative office space
- Open and exposed ceilings throughout
- Extensive glass-line

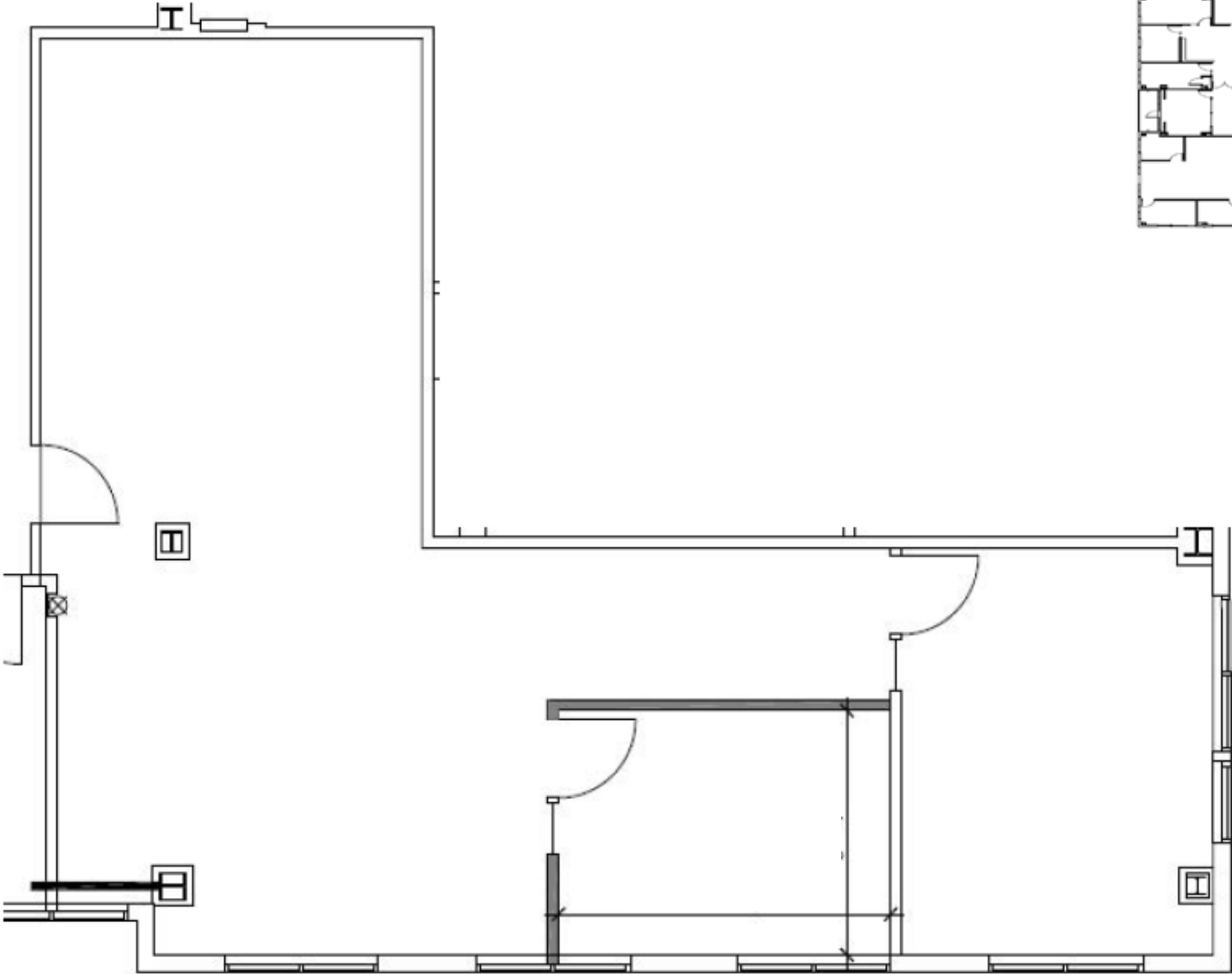


[Click Here for a Virtual Tour](#)

FOR LEASE Petaluma Waterfront Office



www.DBREA.com



1,200 RSF
Suite 200



EXCLUSIVELY MARKETED BY THE DOWLING-BRACCO TEAM OF JLL | WWW.DBREA.COM | 707.421.2900

Tony Sarno
707.217.7196
RE License# 01430933

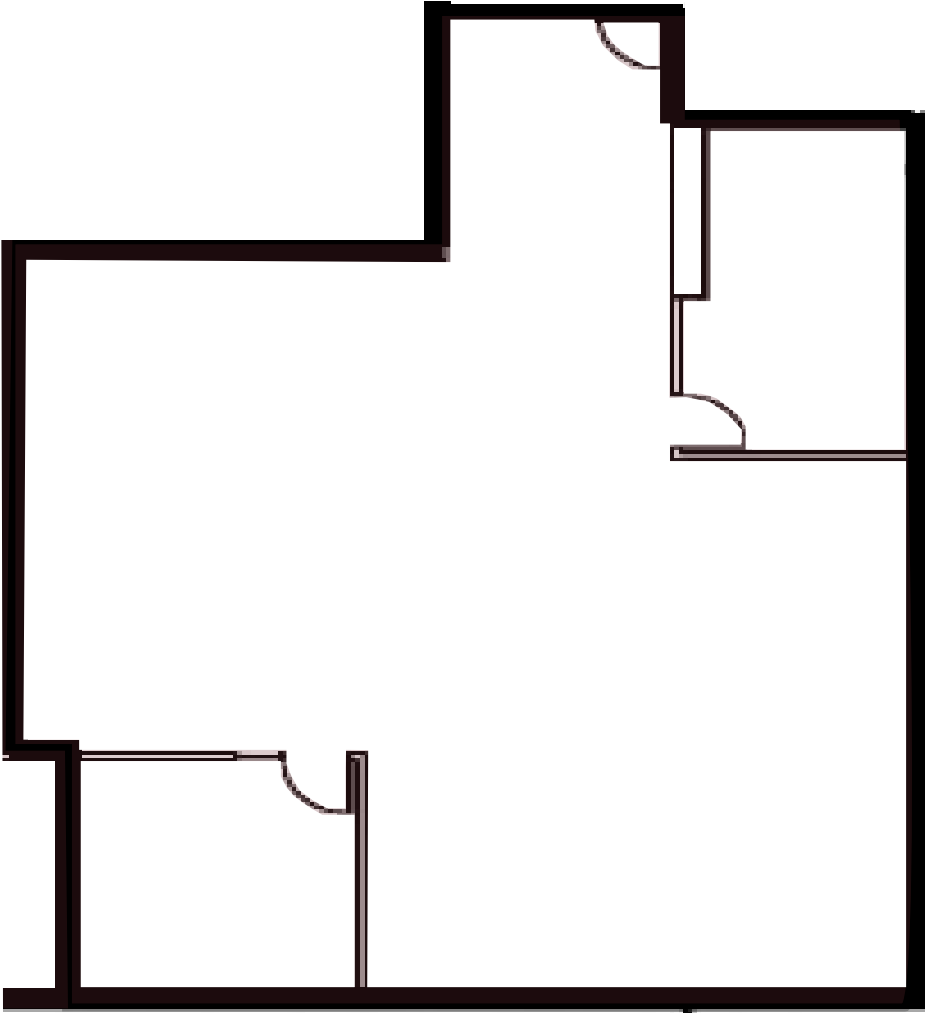
Jordan Lazor
415.595.5102
RE License# 0201117

Chris Tewhill
415.747.0798
RE License# 02034376

Glen Dowling
707.227.7800
RE License# 0890450

FOR LEASE **Petaluma**
Waterfront Office

www.DBREA.com



2,166 RSF
Suite 211



EXCLUSIVELY MARKETING BY THE DOWLING-BRACCO TEAM OF JLL | WWW.DBREA.COM | 707.421.2900

Tony Sarno
707.217.7196
RE License# 01430933

Jordan Lazor
415.595.5102
RE License# 0201117

Chris Tewhill
415.747.0798
RE License# 02034376

Glen Dowling
707.227.7800
RE License# 0890450