

FOR LEASE **Santa Rosa**

Stony Point Center



Strategic Location in the Stony Point Area of Santa Rosa



FOR LEASE **Santa Rosa** **Stony Point Center**



Class A Office in Santa Rosa's Premier Office Park

Type:
Office

Address:
**70 Stony Point Rd
Santa Rosa, CA**

Total SF
2,647

of Floors
**One Building:
1 Story**

DESCRIPTION

Fountaingrove Executive Center is a 2-story Class A office building totaling 37,428 square feet. Perched on a hillside, it is one of the premier office buildings in Sonoma County and the prestigious Fountaingrove submarket. The property has excellent identity and visibility from Highway 101 and includes outstanding signage.

LOCATION

The portfolio's location provides close proximity to the region's executive housing and over 3.4 million square feet of regional retail amenities within a two mile radius. Nearby retail amenities include Coddington Mall, the region's shopping mall and Santa Rosa's primary retail destination. Coddington Mall has over 45 stores and features Whole Foods, Target, Macy's and Nordstrom Rack.

AMENITIES

Outdoor BBQ, picnic area and a beautiful lake, Free ample covered parking for your employees and clients. Campus setting with water features, seating areas, fountains, walking paths & public art.

KEY TENANTS

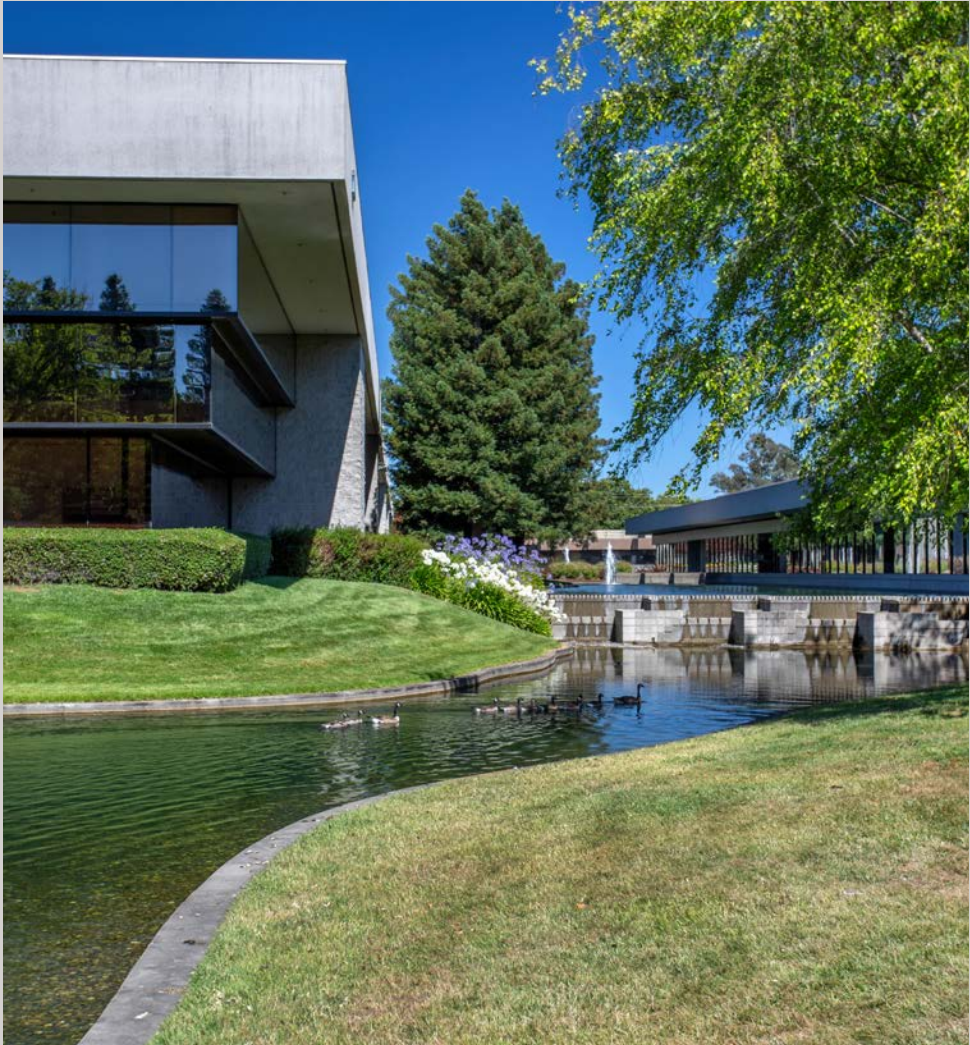
Sutter Health	BPM LLP
National Instruments	Abbey Weitzenberg
Vantreo	



EXCLUSIVELY MARKETED BY:
Shawn Johnson
DRE#: 00835502

Peter Briceño
DRE#: 01885655

FOR LEASE **Santa Rosa**
Stony Point Center

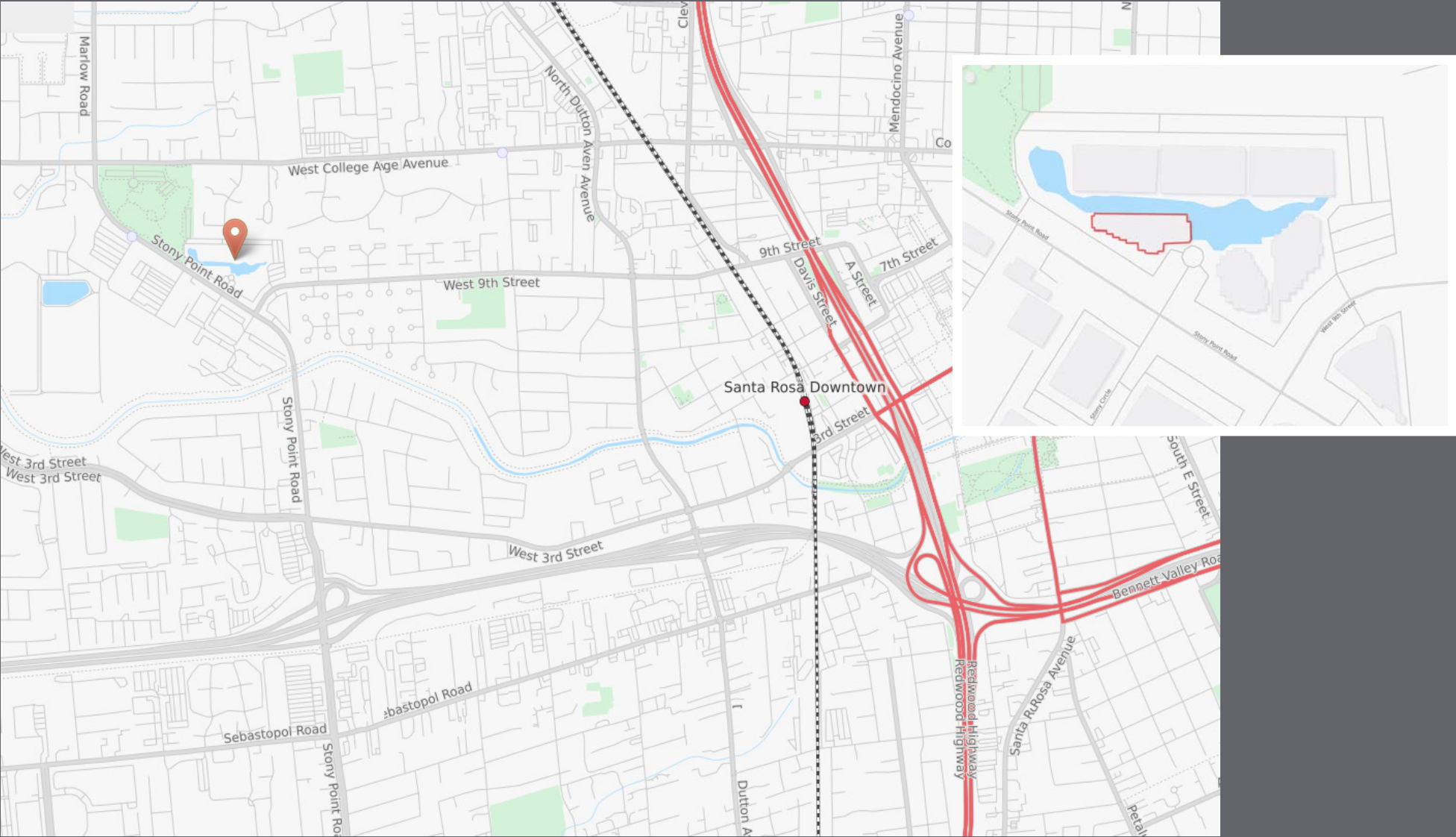


EXCLUSIVELY MARKETED BY:
Shawn Johnson
DRE#: 00835502

Peter Briceño
DRE#: 01885655

FOR LEASE **Santa Rosa**
Stony Point Center

Located in Santa Rosa's premier Stony Point office park, with immediate proximity to Highways 101 and 12, public transportation, and amenities.



EXCLUSIVELY MARKETING BY:

Shawn Johnson
DRE#: 00835502

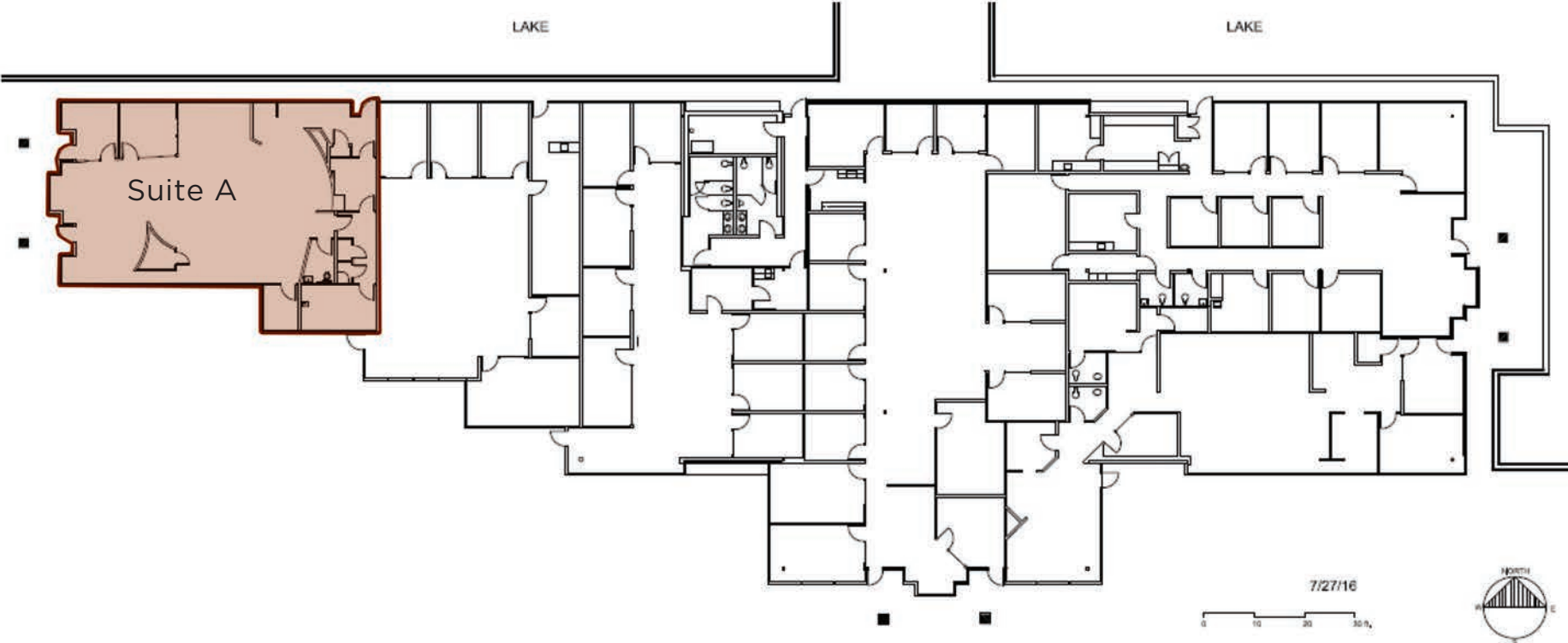
Peter Briceño
DRE#: 01885655

FOR LEASE **Santa Rosa**
Stony Point Center



2,637 RSF

70 Stony Point Road
First Floor



EXCLUSIVELY MARKETED BY:
Shawn Johnson
DRE#: 00835502

Peter Briceño
DRE#: 01885655

FOR LEASE Santa Rosa Stony Point Center

ThriveatStonyPoint.com

