

FOR LEASE Santa Rosa

Fountaingrove Executive Center



Distinguished Location with Wine Country Views



FOR LEASE **Santa Rosa**
Fountaingrove Executive Center



Class A Offices in
Santa Rosa's Premier
Office Park

Type:
Office

Address:
**3700 Old Redwood Highway
Santa Rosa, CA**

Available SF:
**1st Floor: 5,933
2nd Floor: 2,640**

of Floors:
**One Building
2 Stories**

DESCRIPTION

Fountaingrove Executive Center is a 2-story Class A office building totaling 37,428 square feet. Perched on a hillside, it is one of the premier office buildings in Sonoma County and the prestigious Fountaingrove submarket. The property has excellent identity and visibility from Highway 101 and includes outstanding signage.

LOCATION

Fountaingrove Executive Center, located at 3700 Old Redwood Highway, is just ten minutes from Sonoma County Airport. Its close proximity to Highway 101 means tenants can easily enjoy the nearby Coddington Mall, Fountaingrove Golf and Athletic Club, Wells Fargo Center for the Arts as well as a variety of retail, restaurants and other services.

AMENITIES

Spectacular wine country views and distinguished location. The property is locally owned and managed.

KEY TENANTS

Wells Fargo Advisors
Mendocino Forest Products

First Citizens Bank and Trust
Vista Broadband Networks



EXCLUSIVELY MARKETED BY:
Shawn Johnson
DRE#: 00835502

Peter Briceño
DRE#: 01885655

FOR LEASE **Santa Rosa**
Fountaingrove Executive Center

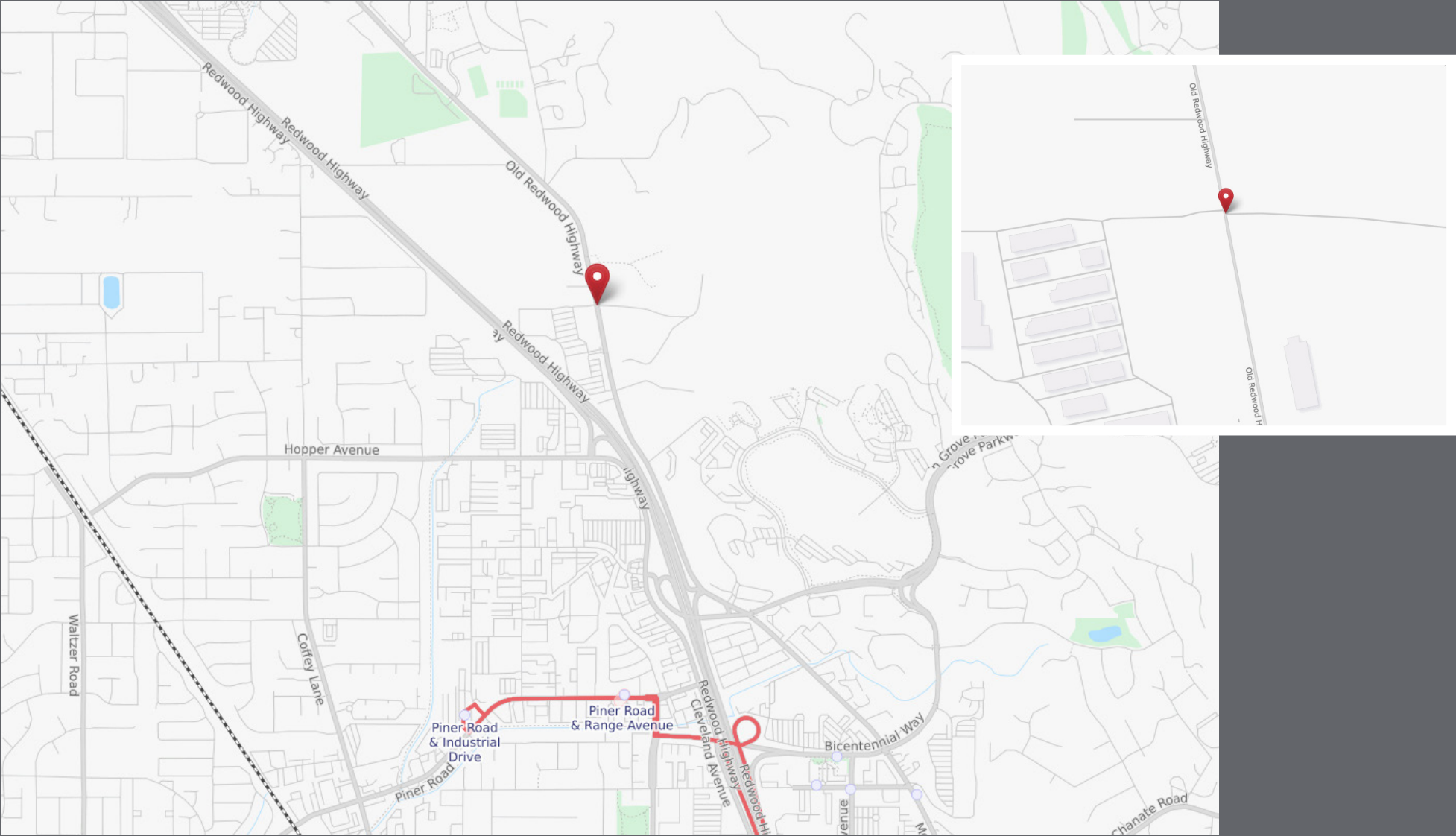


EXCLUSIVELY MARKETED BY:
Shawn Johnson
DRE#: 00835502

Peter Briceño
DRE#: 01885655

FOR LEASE **Santa Rosa**

Fountaingrove Executive Center



EXCLUSIVELY MARKETED BY:

Shawn Johnson
DRE#: 00835502

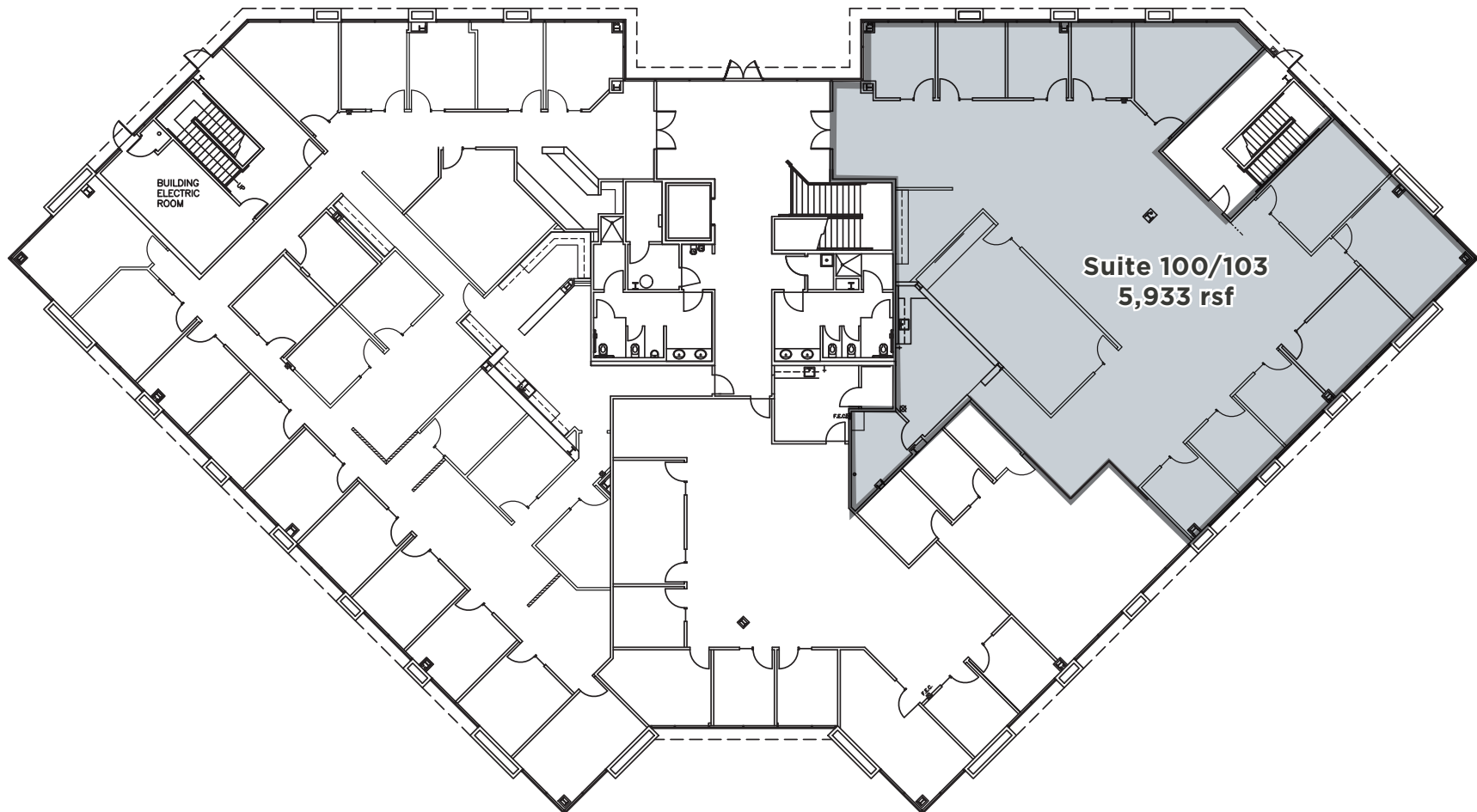
Peter Briceño
DRE#: 01885655

FOR LEASE **Santa Rosa**
Fountaingrove Executive Center

5,933 RSF

- Suite 100/103: 5,933 Square Feet

3700 Old Redwood Hwy
First Floor



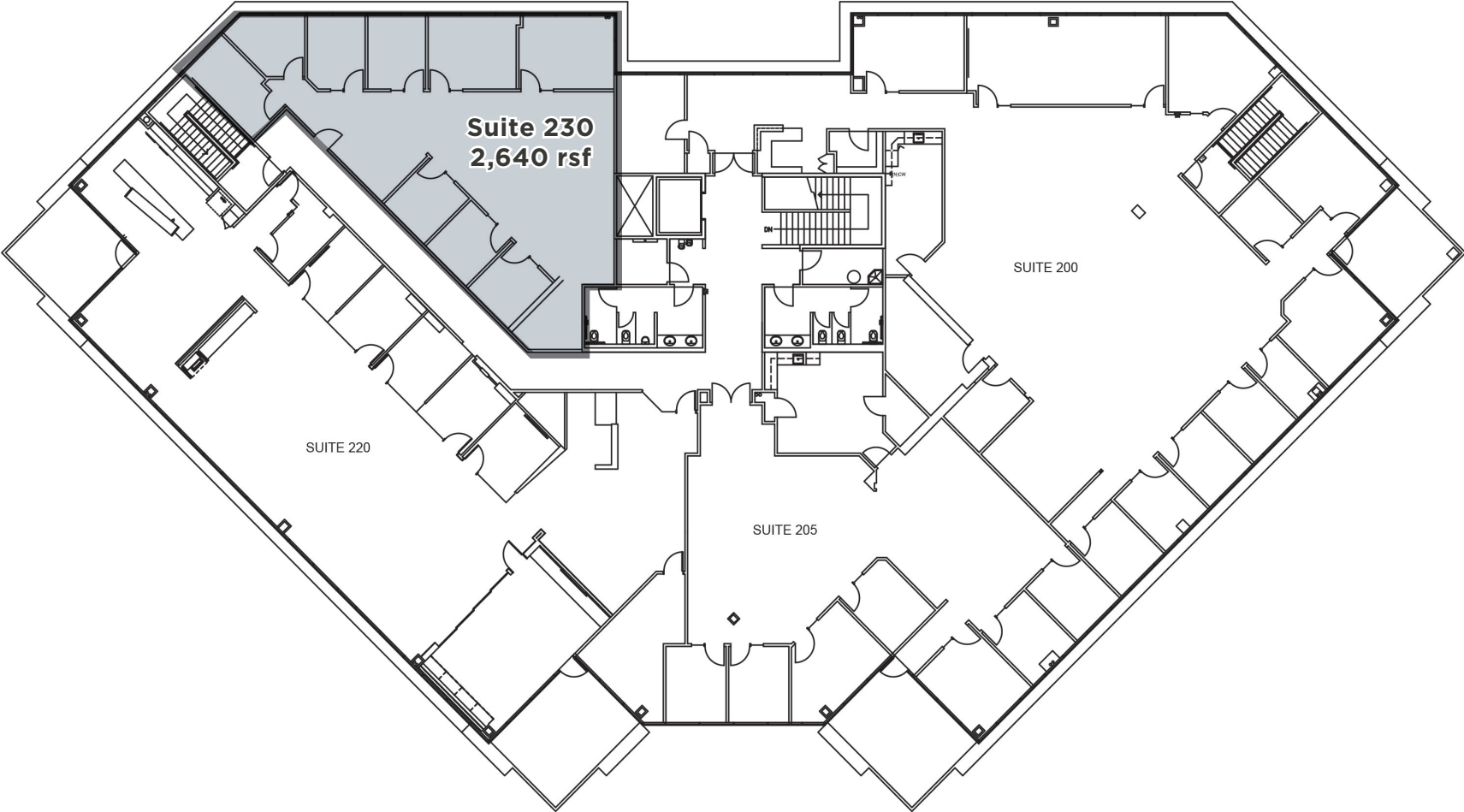
FOR LEASE **Santa Rosa**
Fountaingrove Executive Center



2,640 RSF

- Suite 230: 2,640 Square Feet

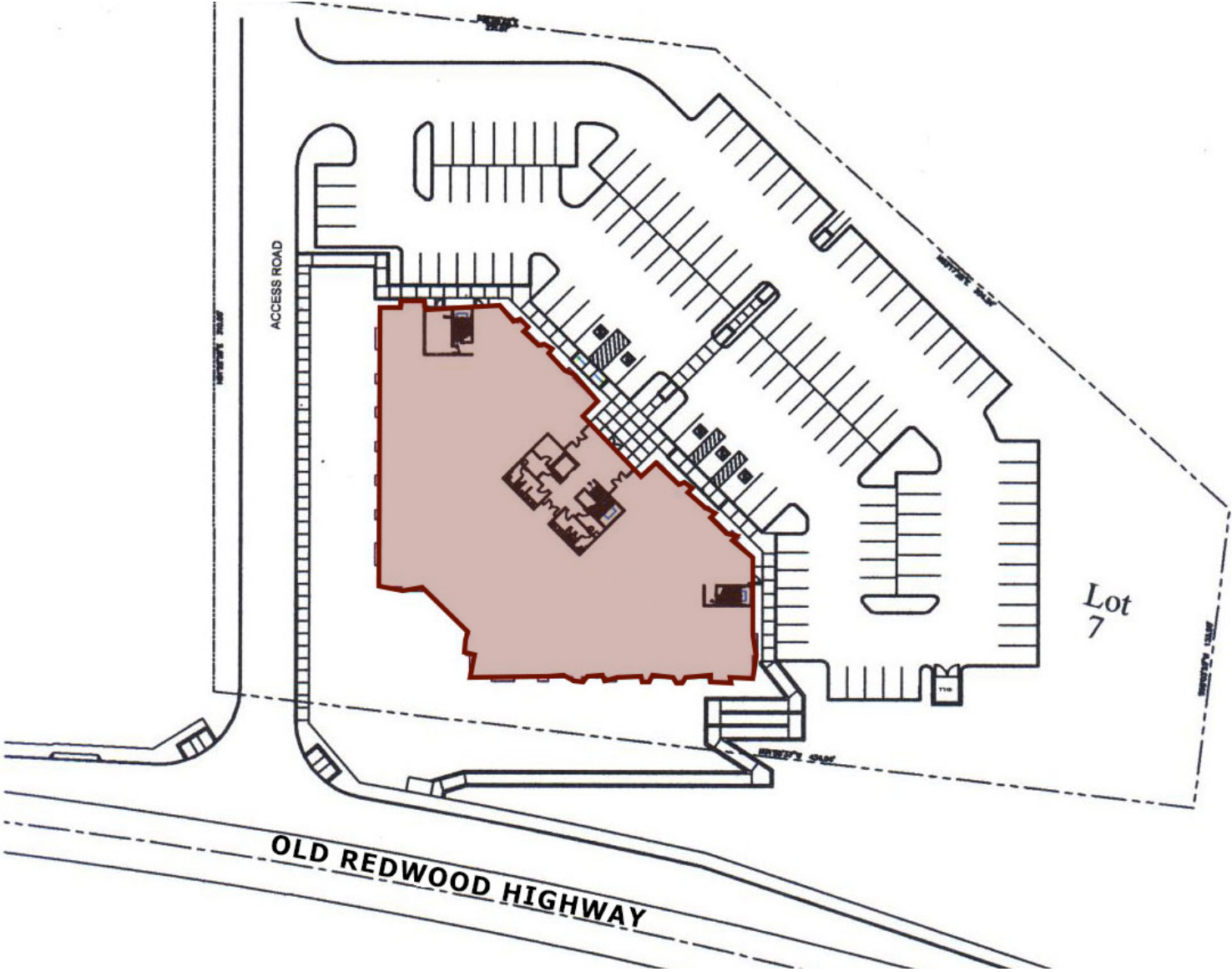
3700 Old Redwood Hwy
Second Floor



EXCLUSIVELY MARKETED BY:
Shawn Johnson
DRE#: 00835502

Peter Briceño
DRE#: 01885655

FOR LEASE **Santa Rosa**
Fountaingrove Executive Center



EXCLUSIVELY MARKETING BY:
Shawn Johnson
DRE#: 00835502

Peter Briceño
DRE#: 01885655