

FOR LEASE **Santa Rosa**

Fountaingrove Executive Center



Overlooking Santa Rosa's Prestigious Santa Rosa Submarket



FOR LEASE **Santa Rosa** Fountaingrove Executive Center



3,108 SQUARE FOOT
OFFICE SPACE
AVAILABLE

Type:
Class A Office

Address:
**3562 Round Barn Circle
Santa Rosa, CA**

Range of Available SF:
Second Floor: 3,108

of Floors: Three (3)

DESCRIPTION

Suite 212 offers an open floor plan with an extensive glass-line. The space includes a full kitchen, 3 private offices, a conference room, & wet bar.

LOCATION

3562 Round Barn Circle is just ten minutes from Sonoma County Airport. The center's close proximity to Highway 101 means tenants can enjoy the nearby Coddington Mall, Fountainrove Golf and Athletic Club, Wells Fargo Center for the Arts as well as a wide selection of retail, restaurants and other services.

AMENITIES

- Expansive floor to ceiling glass line
- High-speed technology access
- 10' finished ceiling height
- Restrooms with showers and lockers
- Private balconies
- Space planning flexibility
- High quality building standard finishes

KEY TENANTS

Morgan Stanley
Pisenti & Brinker
NBC Services

FOR LEASE **Santa Rosa**
Fountaingrove Executive Center

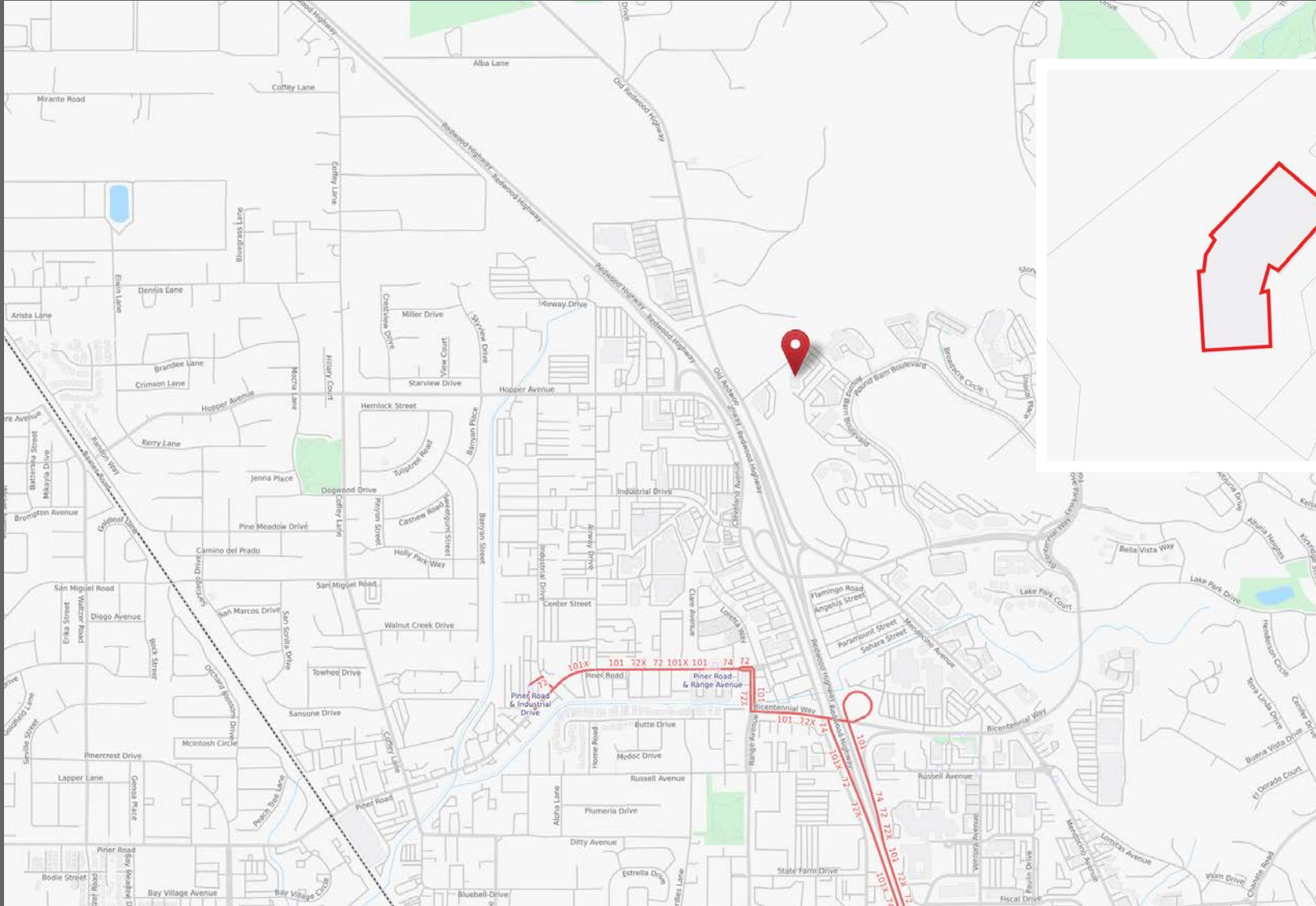


FOR LEASE **Santa Rosa**
Fountaingrove Executive Center



FOR LEASE **Santa Rosa**

Fountaingrove Executive Center

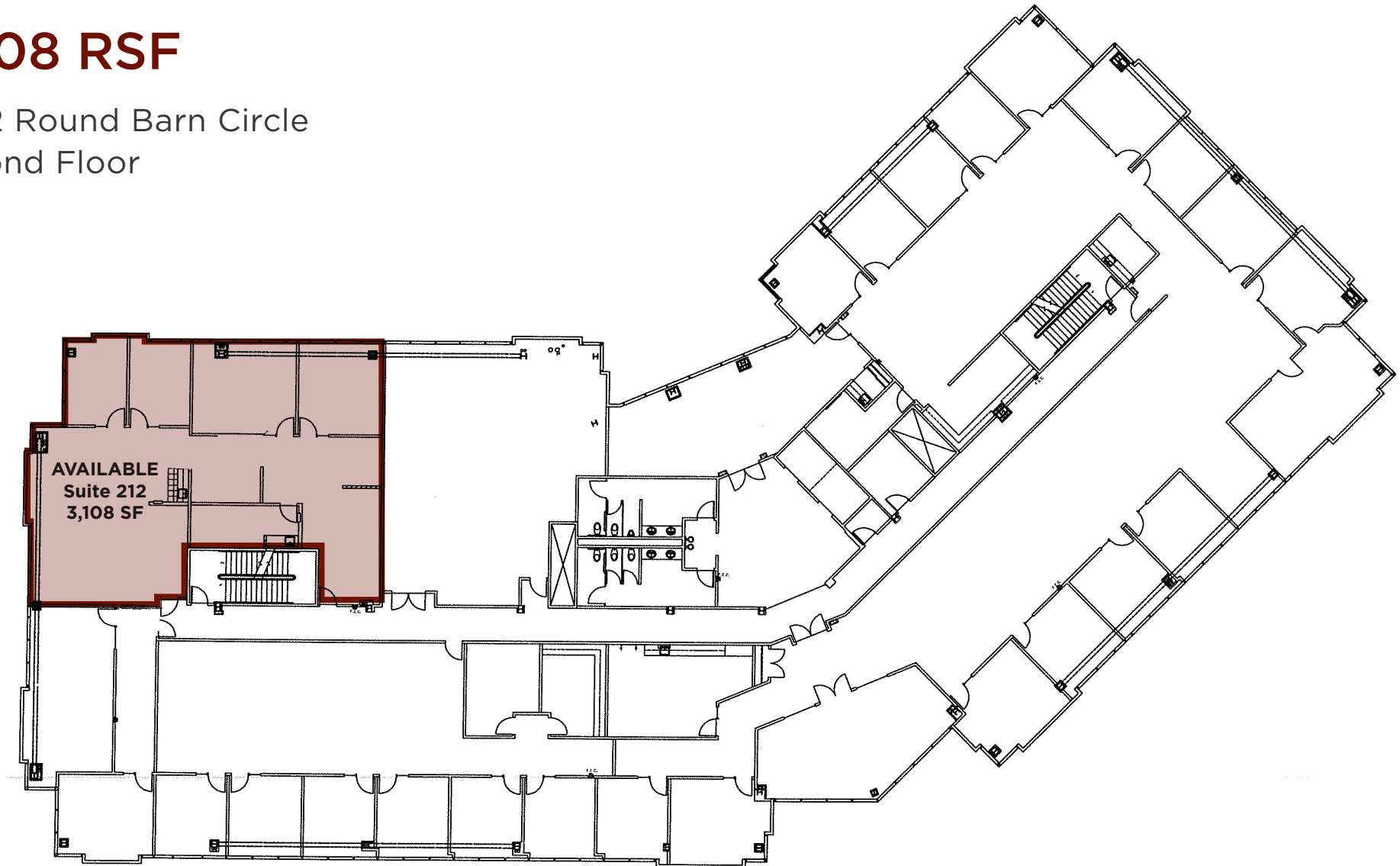


FOR LEASE **Santa Rosa**
Fountaingrove Executive Center



3,108 RSF

3562 Round Barn Circle
Second Floor



On-Site Amenities