

FOR LEASE **Santa Rosa**

Fountaingrove Center



Overlooking Santa Rosa's Prestigious Santa Rosa Submarket



FOR LEASE **Santa Rosa** **Fountaingrove Center**



Class A Offices in Santa Rosa's Prestigious Fountaingrove Submarket

Type:

Office

Address:

**3550 - 3558 Round Barn Blvd.
Santa Rosa, CA**

Range of Available SF:

6,165

2,965 (Available 12/1/21)

1,543 (Available 7/1/21)

1,432

of Floors:

Three Buildings

3 Stories

DESCRIPTION

A three-building complex with each building featuring three stories of Class A office space for a combined total of 161,055 square feet and which collectively are known as Fountaingrove Center. They are situated overlooking Santa Rosa's prestigious Fountaingrove submarket with convenient access to Highway 101. The center offers ample free parking for employees and clients plus an automated card key system for safe after-hour access.

LOCATION

Fountaingrove Center is at 3550, 3554 and 3558 Round Barn Boulevard respectively and is just ten minutes from Sonoma County Airport. The center's close proximity to Highway 101 means tenants can enjoy the nearby Coddington Mall, Fountaingrove Golf and Athletic Club, Wells Fargo Center for the Arts as well as a wide selection of retail, restaurants and other services.

AMENITIES

An onsite Fountaingrove deli and on-site fitness center with showers as well as spectacular wine country views from the expansive floor to ceiling glass line. The property is locally owned with onsite property management.

KEY TENANTS

Kaiser Off-site Support Svcs

Kaiser Health Connect

Kaiser Home Health

Stifel, Nicolaus & Co.

Umpqua (formerly Sterling Savings)

Kaiser ACS Clinic

Kaiser IT Training Dept

Kaiser Foundation Hospitals

Raymond James Financial

Wells Fargo Bank



EXCLUSIVELY MARKETING BY:

Shawn Johnson
DRE#: 00835502

Dave Peterson
DRE#: 01280039

Brian Keegan
DRE#: 01809537

FOR LEASE **Santa Rosa**
Fountaingrove Executive Center



EXCLUSIVELY MARKETING BY:

Shawn Johnson
707.528.1400 ext. 238

Dave Peterson
707.528.1400 ext. 210

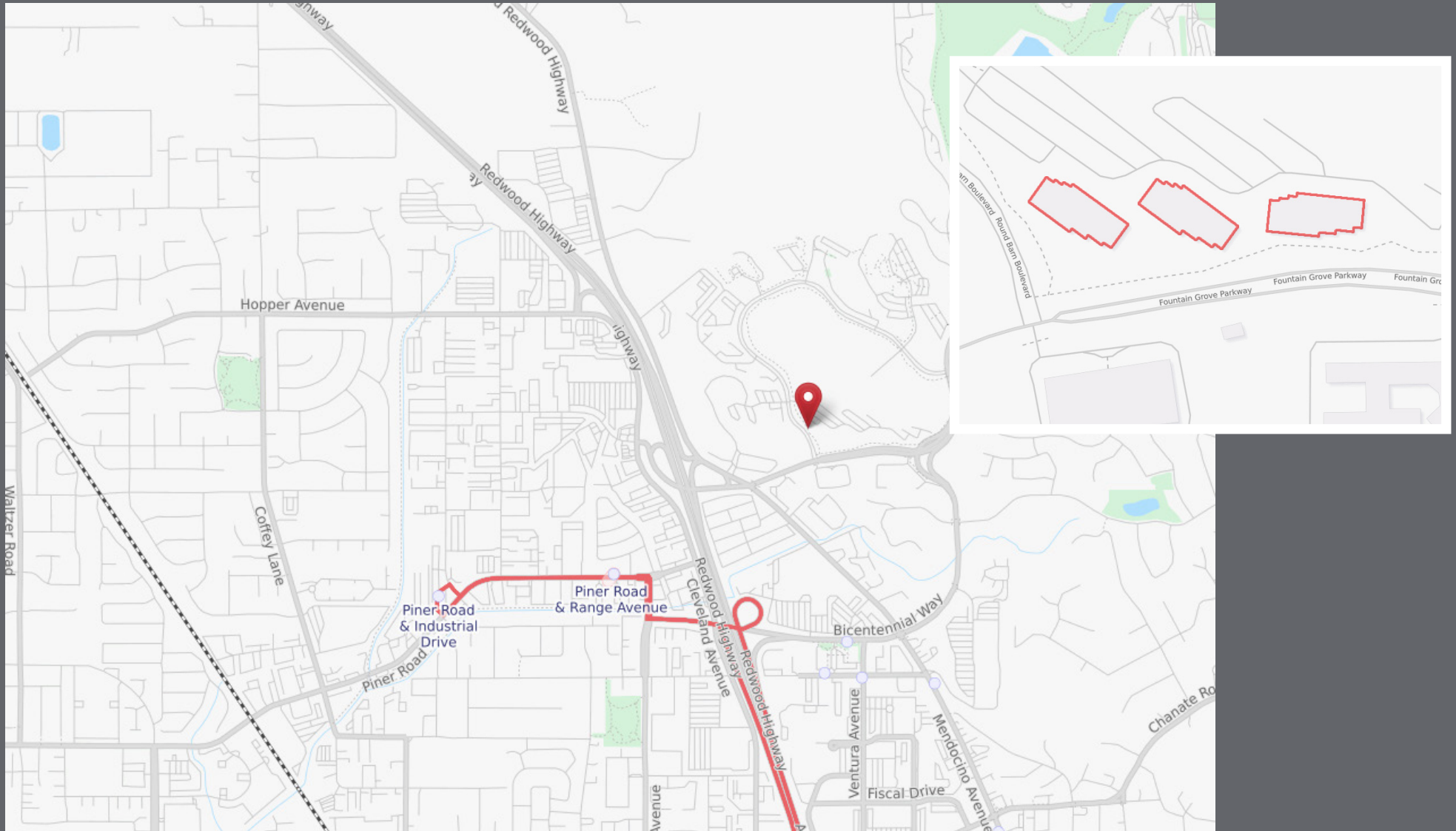
Brian Keegan
707.528.1400 ext. 249

FOR LEASE **Santa Rosa** Fountaingrove Executive Center



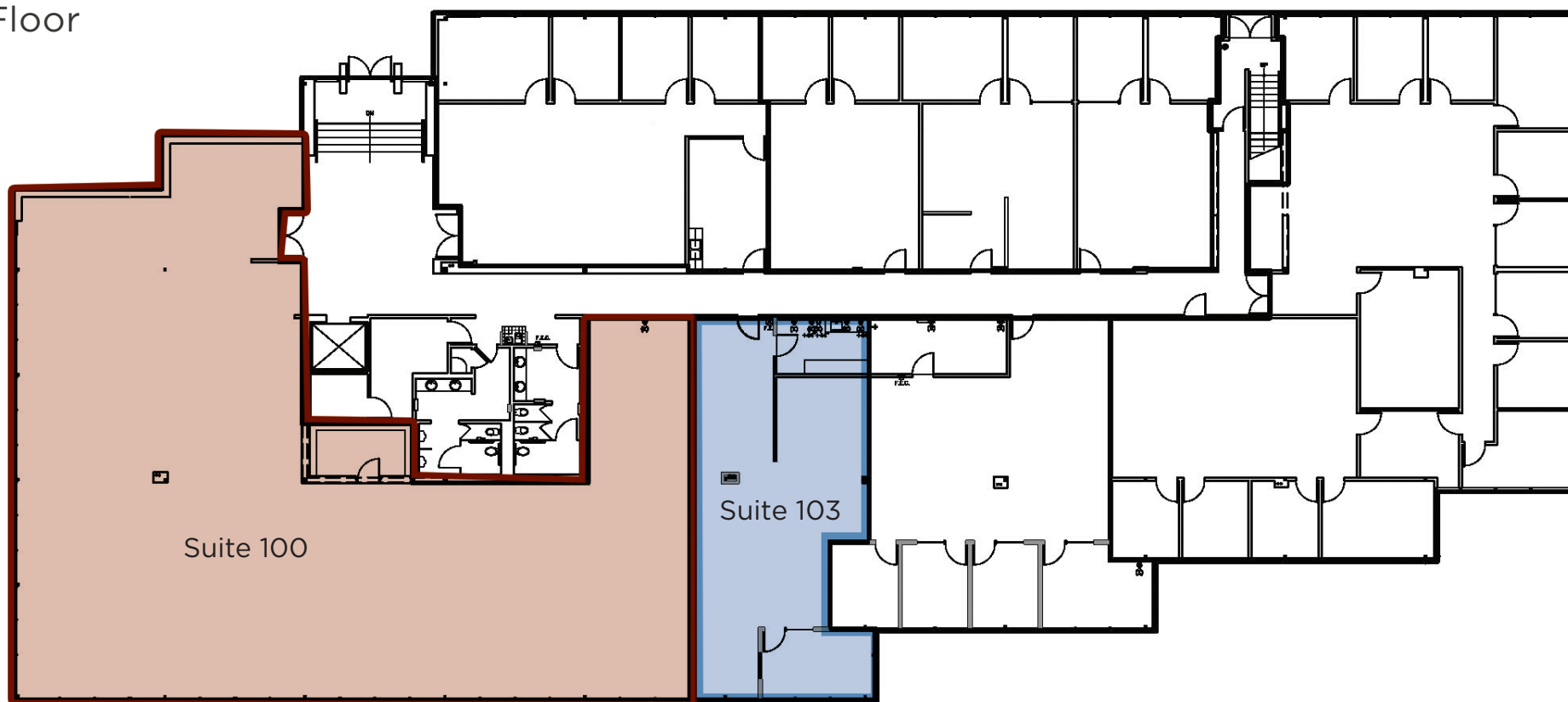
FOR LEASE **Santa Rosa**

Fountaingrove Center



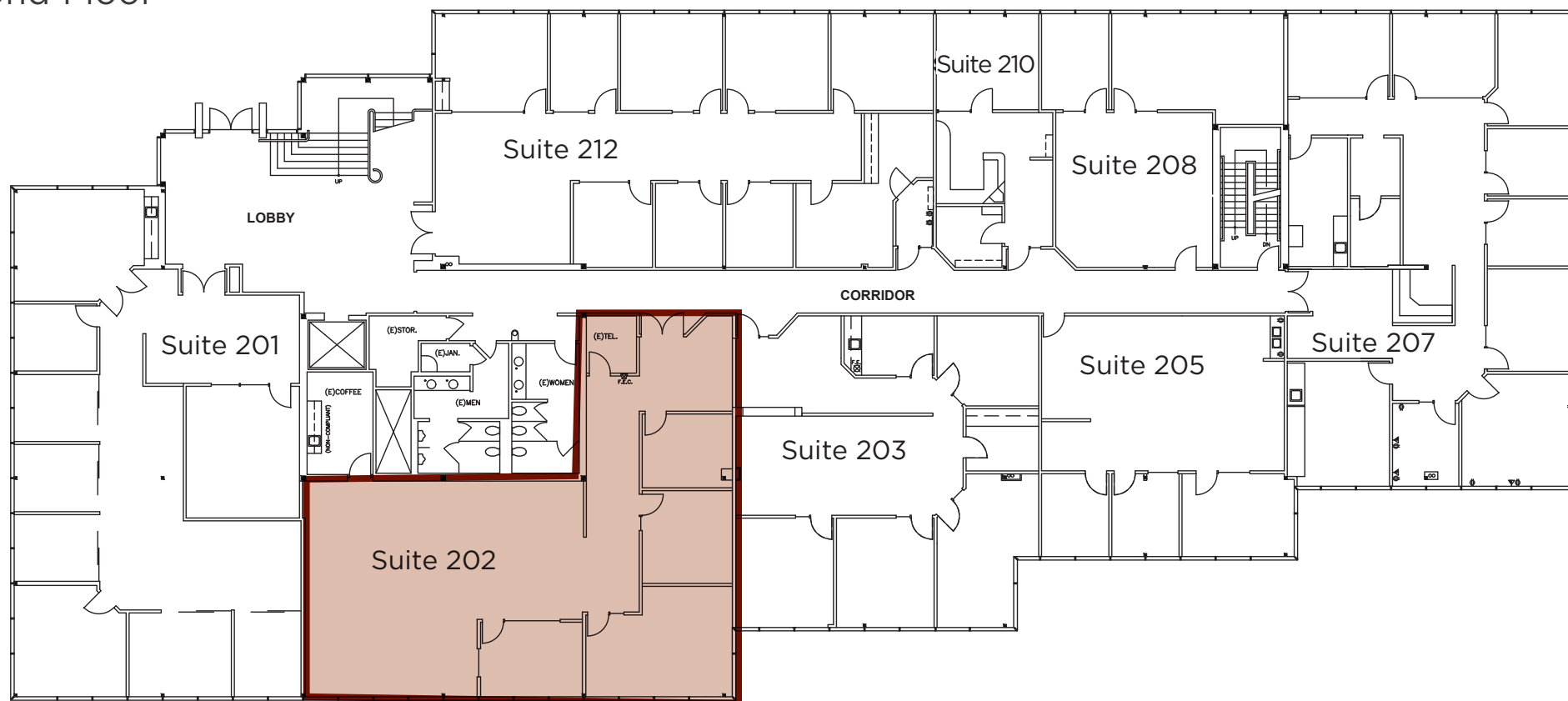
Suite 100: 6,165 RSF
Suite 103: 1,543 RSF (Available 7/1/21)

3550 Round Barn Blvd.
First Floor

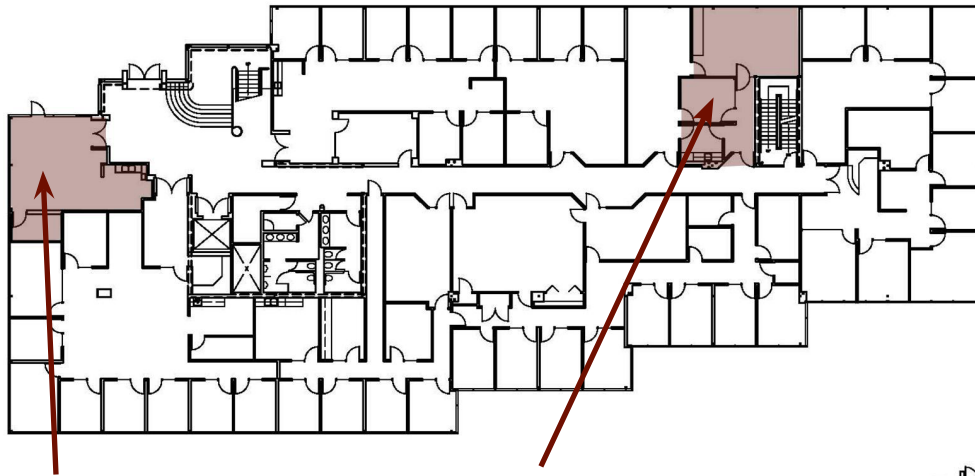


Suite 202: 2,965 RSF - Available 12/1/21

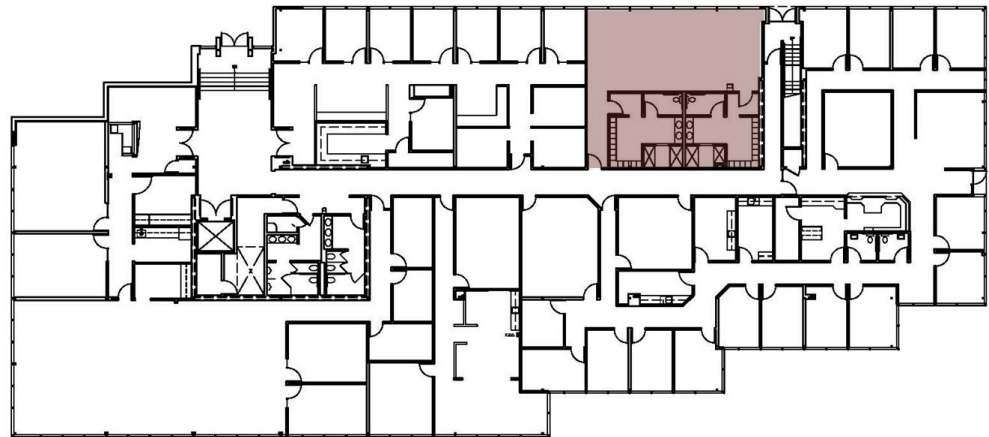
3550 Round Barn Blvd.
Second Floor



On-Site Amenities



Deli & Conference Center
3554 Round Barn Blvd. 2nd Floor



Fitness Center with showers
3558 Round Barn Blvd. 1st Floor