

FOR LEASE **Santa Rosa**

Fountaingrove Center



Overlooking Santa Rosa's Prestigious Santa Rosa Submarket



FOR LEASE **Santa Rosa** Fountaingrove Center



Class A Offices in Santa Rosa's Prestigious Fountaingrove Submarket

Type:
Office

Address:
**3550 - 3558 Round Barn Blvd.
Santa Rosa, CA**

Range of Available SF:
6,165

of Floors:
**Three Buildings
3 Stories**

DESCRIPTION

A three-building complex with each building featuring three stories of Class A office space for a combined total of 161,055 square feet and which collectively are known as Fountaingrove Center. They are situated overlooking Santa Rosa's prestigious Fountaingrove submarket with convenient access to Highway 101. The center offers ample free parking for employees and clients plus an automated card key system for safe after-hour access.

LOCATION

Fountaingrove Center is at 3550, 3554 and 3558 Round Barn Boulevard respectively and is just ten minutes from Sonoma County Airport. The center's close proximity to Highway 101 means tenants can enjoy the nearby Coddington Mall, Fountaingrove Golf and Athletic Club, Wells Fargo Center for the Arts as well as a wide selection of retail, restaurants and other services.

AMENITIES

An onsite Fountaingrove deli and on-site fitness center with showers as well as spectacular wine country views from the expansive floor to ceiling glass line. The property is locally owned with onsite property management.

KEY TENANTS

Kaiser Off-site Support Srvs	Kaiser ACS Clinic
Kaiser Health Connect	Kaiser IT Training Dept
Kaiser Home Health	Kaiser Foundation Hospitals
Stifel, Nicolaus & Co.	Raymond James Financial
Umpqua (formerly Sterling Savings)	Wells Fargo Bank



EXCLUSIVELY MARKETED BY:
Shawn Johnson
DRE#: 00835502

Dave Peterson
DRE#: 01280039

Brian Keegan
DRE#: 01809537

FOR LEASE **Santa Rosa**
Fountaingrove Executive Center



EXCLUSIVELY MARKETED BY:
Shawn Johnson
707.528.1400 ext. 238

Dave Peterson
707.528.1400 ext. 210

Brian Keegan
707.528.1400 ext. 249

FOR LEASE Santa Rosa Fountaingrove Executive Center

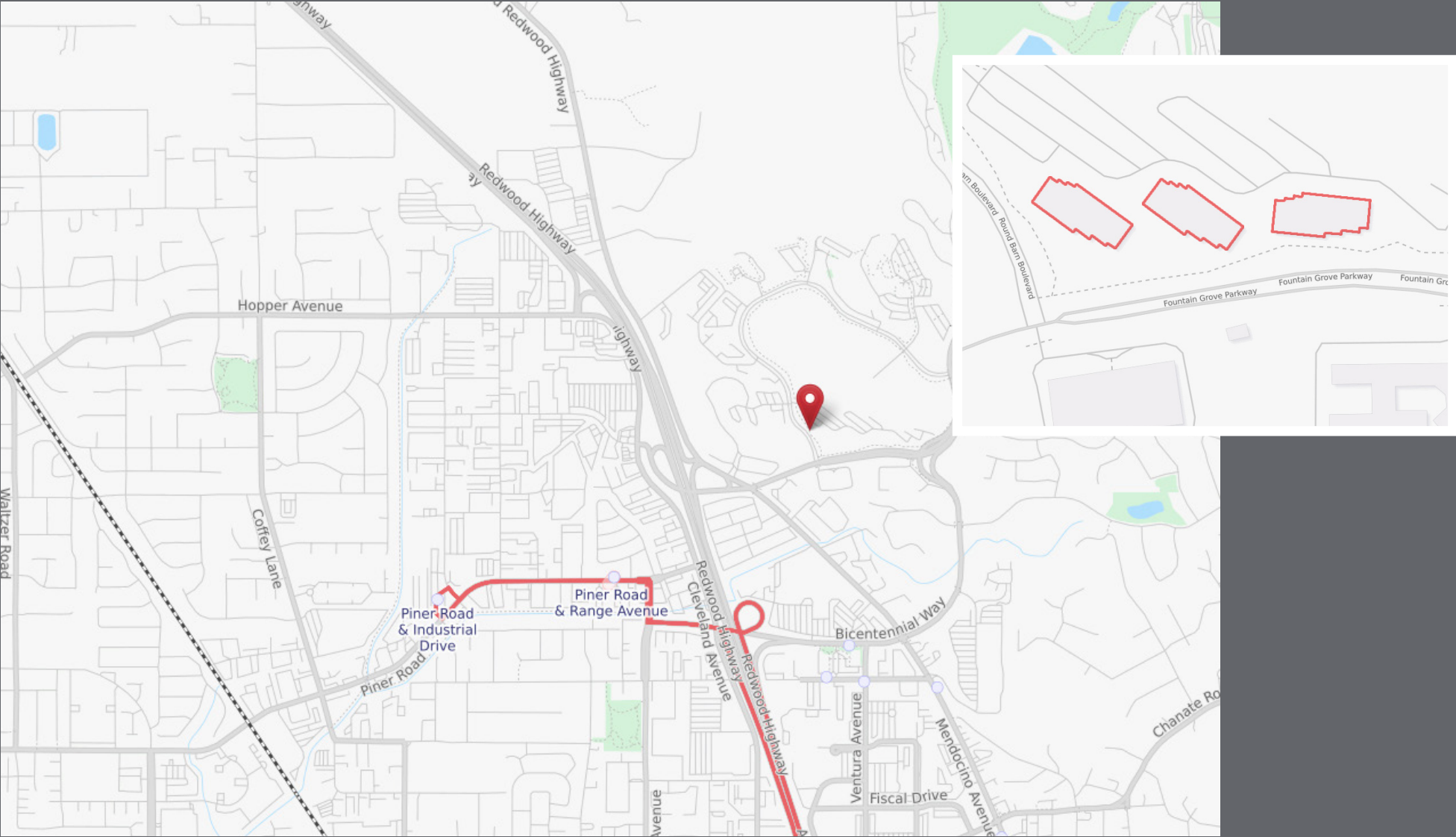


EXCLUSIVELY MARKETED BY:
Shawn Johnson
707.528.1400 ext. 238

Dave Peterson
707.528.1400 ext. 210

Brian Keegan
707.528.1400 ext. 249

FOR LEASE **Santa Rosa**
Fountaingrove Center



EXCLUSIVELY MARKETING BY:

Shawn Johnson
707.528.1400 ext. 238

Dave Peterson
707.528.1400 ext. 210

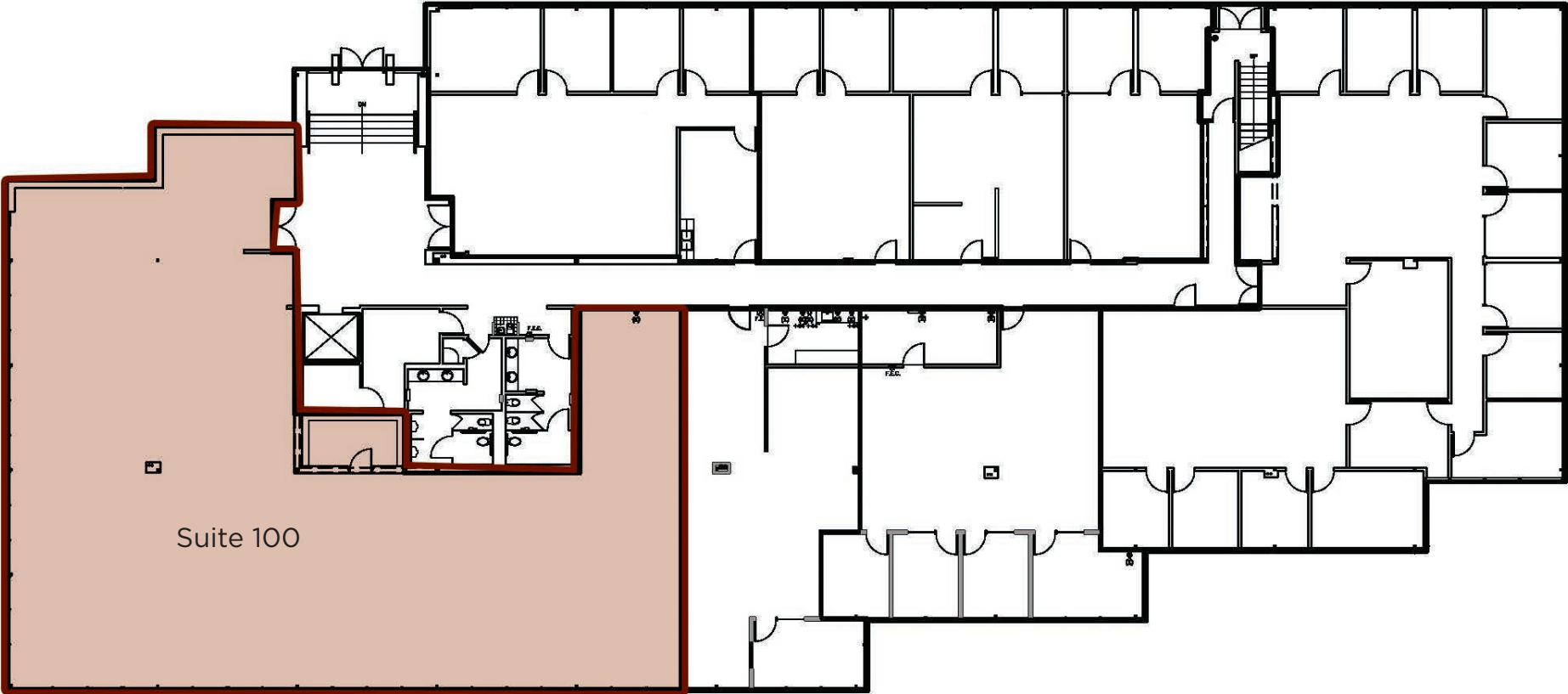
Brian Keegan
707.528.1400 ext. 249

FOR LEASE **Santa Rosa**
Fountaingrove Center



6,165 RSF

3550 Round Barn Blvd.
First Floor



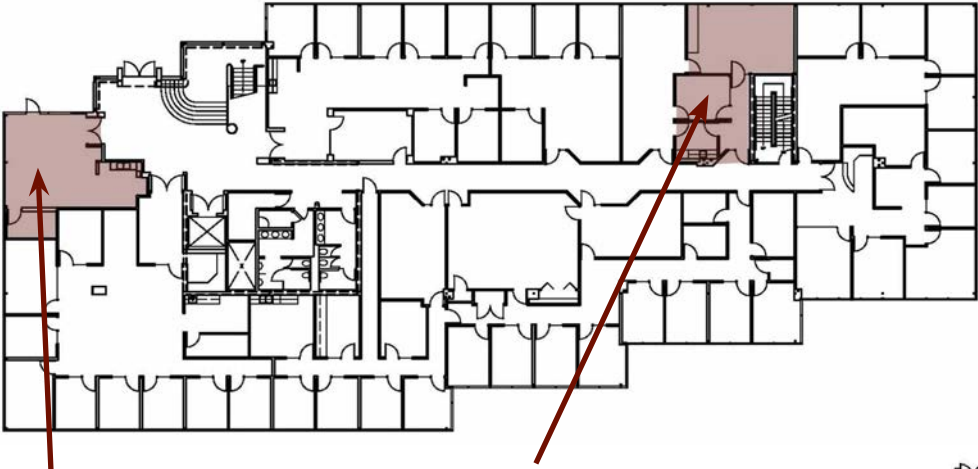
EXCLUSIVELY MARKETED BY:

Shawn Johnson
707.528.1400 ext. 238

Dave Peterson
707.528.1400 ext. 210

Brian Keegan
707.528.1400 ext. 249

On-Site Amenities



Deli & Conference Center
3554 Round Barn Blvd. 2nd Floor



Fitness Center with showers
3558 Round Barn Blvd. 1st Floor

C.A.R.E.S.

Basin Street looks forward to welcoming you back to the office.

We would like to share with you our plan for providing a safer and cleaner environment as we emerge from the shelter-in-place and stay-at-home directives and ordinances.

During this unprecedented time, we continue to follow best practices and protocols as set forth by the leading health organizations. Many resources required to adhere to these best practices are limited due to the prioritization of hospitals, healthcare workers and first responders. We are working closely with our network of vendors to obtain and replenish these supplies on an ongoing basis.

In conjunction with these efforts, we are introducing our C.A.R.E.S. Initiative to support our tenants as employees re-enter the workplace and guests visit our buildings. The following five areas of focus will allow us to work together to provide a safer environment and help preserve employee well-being.



Clean Hands

- ◆ Use signage to remind employees and guests of hand washing protocols.
- ◆ Place hand sanitizer or wipes in common areas.
- ◆ Enhanced cleaning protocols for evening janitors and day porters with focus on high touch areas.



Air Systems

- ◆ Manage HVAC systems to ensure industry standard fresh air ventilation.
- ◆ Routinely perform maintenance using quality products and review the systems in a holistic fashion for efficiency and performance.
- ◆ Basin Street has sourced disposable masks that will be allocated, as needed and upon request, to our tenants through our property management offices while supplies last.



Restroom Etiquette

- ◆ Signage at restroom entries to encourage limited occupancy and remind employees and guests of social distancing protocols.
- ◆ Signage in restrooms for handwashing protocols.



Elevator Protocol

- ◆ Use signage to remind employees and guests of social distancing protocols as it pertains to elevator cabs as an enclosed space.
- ◆ Encourage stair access where appropriate.



Safe Distance

- ◆ Reduce or rearrange seating in common areas where possible to encourage social distancing.
- ◆ Keep shared amenities such as fitness centers, café dining areas, shared bikes and conference rooms closed until further notice.
- ◆ Use signage to remind employees and guests of safe distancing protocols.

Our strategies and communication will evolve as we evaluate changing conditions and the effectiveness of protocols and procedures. As you begin to plan the protocols for your business and employees, we encourage you to share your thoughts and ideas with us.

We believe in American resilience and ingenuity, and we are grateful to have an exceptional group of tenants that we can serve and help thrive again.

TOGETHER
we hope to emerge from this stronger than we were before.