

FOR LEASE

Waterfront Office Space



UPGRADE YOUR SEAT TENANT LEASING INCENTIVE

*Sign a lease for 1,500+ SF and
we will rent out a Petaluma Blvd
14 Theatre for you and your team**

201FIRST

**For all qualified deals signed by 9/30/2023.*



****TOUR INCENTIVE: TAKE A TOUR AND IT'S DRINKS
AND A MOVIE FOR TWO ON US**

*** Tour incentive expires 9/30/2023. Two rounds of drinks provided at one
of our Theatre District restaurants and a movie at Petaluma Boulevard 14.*

±2,500 - ±7,598 SF Class "A" Office Space Available in Downtown Petaluma



FOR LEASE **Petaluma** Waterfront Office



Vibrant Office Space in the Theatre District overlooking the Petaluma River

DESCRIPTION

- Class 'A' building with high-quality finishes throughout
- Premier downtown location, in the center of it all
- Short walking distance to all downtown amenities, restaurants and shopping
- Abundant and convenient parking nearby
- Professional and responsive property management
- Men's and women's shower/lockers
- Petaluma River and mountain views

Type:
Office

Address:
201 First Street
Petaluma, CA

Total SF:
50,755



Jones Lang LaSalle Brokerage, Inc.
Real Estate License # 01856260

Tony Sarno
tony.sarno@jll.com
707.217.7196
RE License# 01430933

Jordan Lazor
jordan.lazor@jll.com
415.595.5102
RE License# 0201117

Laura Duffy
laura.duffy@jll.com
415.686.0255
RE License# 01922792

Glen Dowling
glen.dowling@jll.com
707.227.7800
RE License# 0890450

FOR LEASE **Petaluma** Waterfront Office



Jones Lang LaSalle Brokerage, Inc.
Real Estate License # 01856260

Tony Sarno
tony.sarno@jll.com
707.217.7196
RE License# 01430933

Jordan Lazor
jordan.lazor@jll.com
415.595.5102
RE License# 0201117

Laura Duffy
laura.duffy@jll.com
415.686.0255
RE License# 01922792

Glen Dowling
glen.dowling@jll.com
707.227.7800
RE License# 0890450

FOR LEASE **Petaluma** **Waterfront Office**

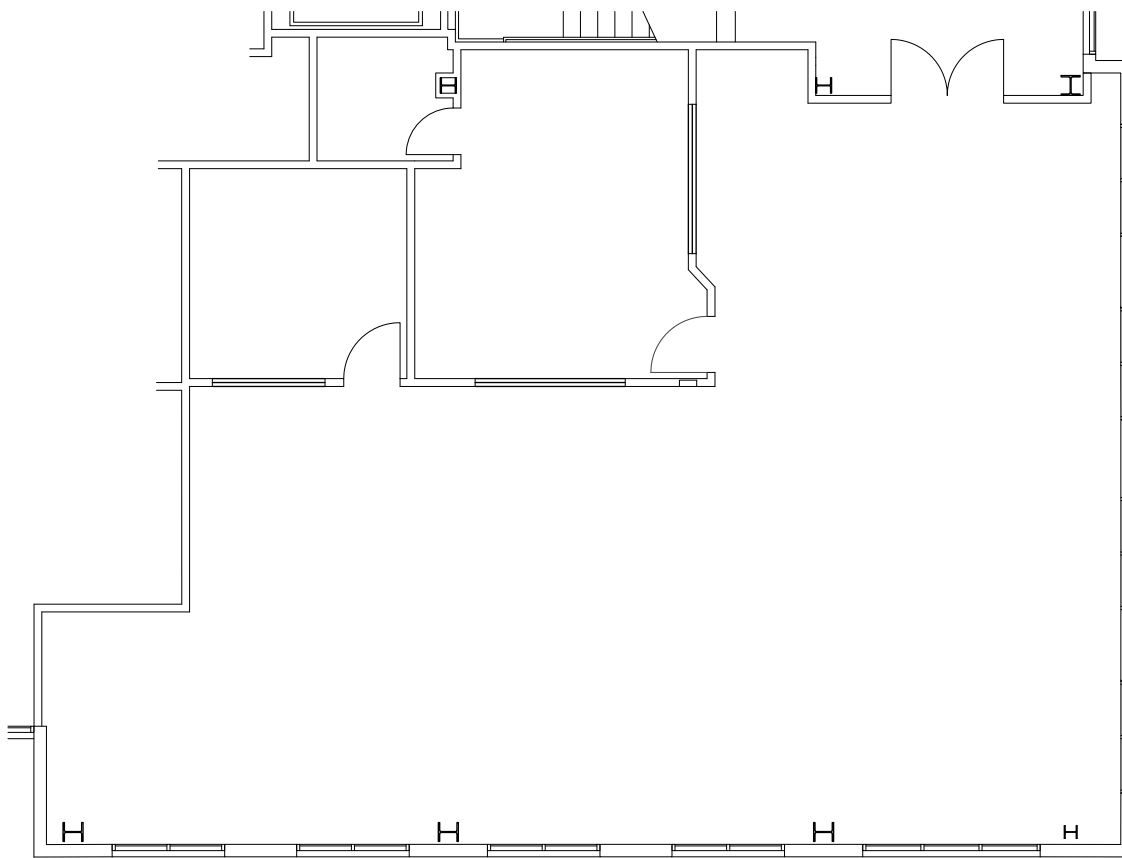


2,500 RSF

Suite 101

Space Highlights

- Modern, creative office space
- Open and exposed ceilings throughout
- Extensive glass-line



View
Virtual
Tour



Jones Lang LaSalle Brokerage, Inc.
Real Estate License # 01856260

Tony Sarno

tony.sarno@jll.com
707.217.7196
RE License# 01430933

Jordan Lazor

jordan.lazor@jll.com
415.595.5102
RE License# 0201117

Laura Duffy

laura.duffy@jll.com
415.686.0255
RE License# 01922792

Glen Dowling

glen.dowling@jll.com
707.227.7800
RE License# 0890450

FOR LEASE **Petaluma** **Waterfront Office**

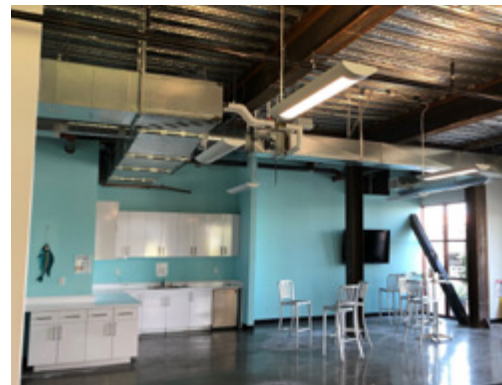
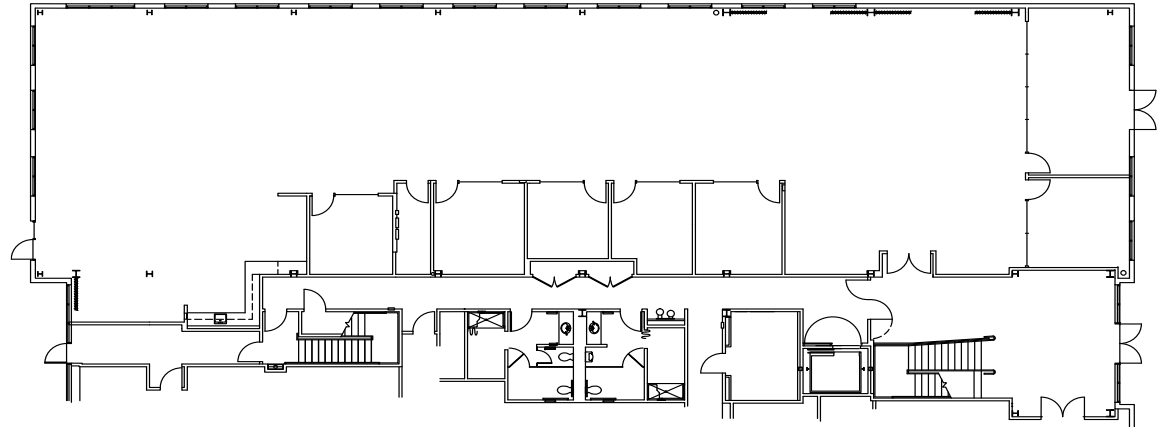


7,598 RSF

Suite 111

Space Highlights

- Open and exposed ceilings throughout
- Extensive glass-line
- Modern finishes throughout
- LED: 10/31/23



Kitchen / Break Room



Patio



View
Virtual
Tour



Jones Lang LaSalle Brokerage, Inc.
Real Estate License # 01856260

Tony Sarno

tony.sarno@jll.com
707.217.7196
RE License# 01430933

Jordan Lazor

jordan.lazor@jll.com
415.595.5102
RE License# 0201117

Laura Duffy

laura.duffy@jll.com
415.686.0255
RE License# 01922792

Glen Dowling

glen.dowling@jll.com
707.227.7800
RE License# 0890450

FOR LEASE **Petaluma** Waterfront Office



Jones Lang LaSalle Brokerage, Inc.
Real Estate License # 01856260

Tony Sarno
tony.sarno@jll.com
707.217.7196
RE License# 01430933

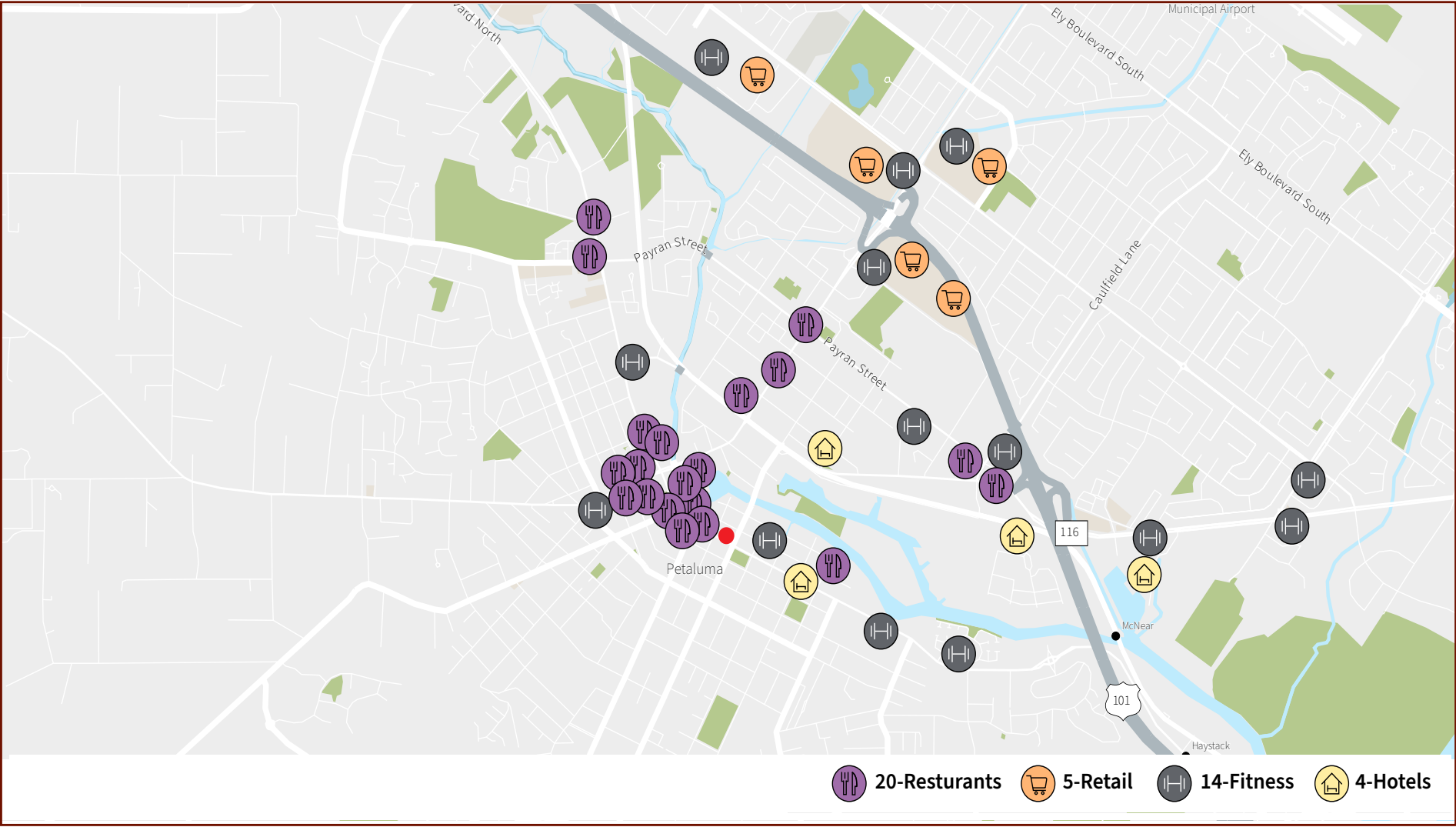
Jordan Lazor
jordan.lazor@jll.com
415.595.5102
RE License# 0201117

Laura Duffy
laura.duffy@jll.com
415.686.0255
RE License# 01922792

Glen Dowling
glen.dowling@jll.com
707.227.7800
RE License# 0890450

FOR LEASE **Petaluma**

Abundant Nearby Amenities



Tony Sarno
tony.sarno@jll.com
707.217.7196
RE License# 01430933

Jordan Lazor
jordan.lazor@jll.com
415.595.5102
RE License# 0201117

Laura Duffy
laura.duffy@jll.com
415.686.0255
RE License# 01922792

Glen Dowling
glen.dowling@jll.com
707.227.7800
RE License# 0890450



Although information has been obtained from sources deemed reliable, neither Owner nor JLL makes any guarantees, warranties or representations, express or implied, as to the completeness or accuracy as to the information contained herein. Any projections, opinions, assumptions or estimates used are for example only. There may be differences between projected and actual results, and those differences may be material. The Property may be withdrawn without notice. Neither Owner nor JLL accepts any liability for any loss or damage suffered by any party resulting from reliance on this information. If the recipient of this information has signed a confidentiality agreement regarding this matter, this information is subject to the terms of that agreement. ©2023. Jones Lang LaSalle IP, Inc. All rights reserved. Jones Lang LaSalle Brokerage, Inc. Real Estate License #: 01856260