

FOR LEASE

Waterfront Office Space



±2,500 - ±7,598 SF Class "A" Office Space Available in Downtown Petaluma



FOR LEASE **Petaluma** Waterfront Office

Vibrant Office Space in the Theatre District overlooking the Petaluma River

DESCRIPTION

- Class 'A' building with high-quality finishes throughout
- Premier downtown location, in the center of it all
- Short walking distance to all downtown amenities, restaurants and shopping
- Abundant and convenient parking nearby
- Professional and responsive property management
- Men's and women's shower/lockers
- Petaluma River and mountain views

Type:
Office

Address:
201 First Street
Petaluma, CA

Total SF:
50,755



Jones Lang LaSalle Brokerage, Inc.
Real Estate License # 01856260

Tony Sarno
tony.sarno@jll.com
707.217.7196
RE License# 01430933

Jordan Lazor
jordan.lazor@jll.com
415.595.5102
RE License# 0201117

Laura Duffy
laura.duffy@jll.com
415.686.0255
RE License# 01922792

Glen Dowling
glen.dowling@jll.com
707.227.7800
RE License# 0890450

FOR LEASE Petaluma Waterfront Office



Jones Lang LaSalle Brokerage, Inc.
Real Estate License # 01856260

Tony Sarno
tony.sarno@jll.com
707.217.7196
RE License# 01430933

Jordan Lazor
jordan.lazor@jll.com
415.595.5102
RE License# 0201117

Laura Duffy
laura.duffy@jll.com
415.686.0255
RE License# 01922792

Glen Dowling
glen.dowling@jll.com
707.227.7800
RE License# 0890450

2,500 RSF

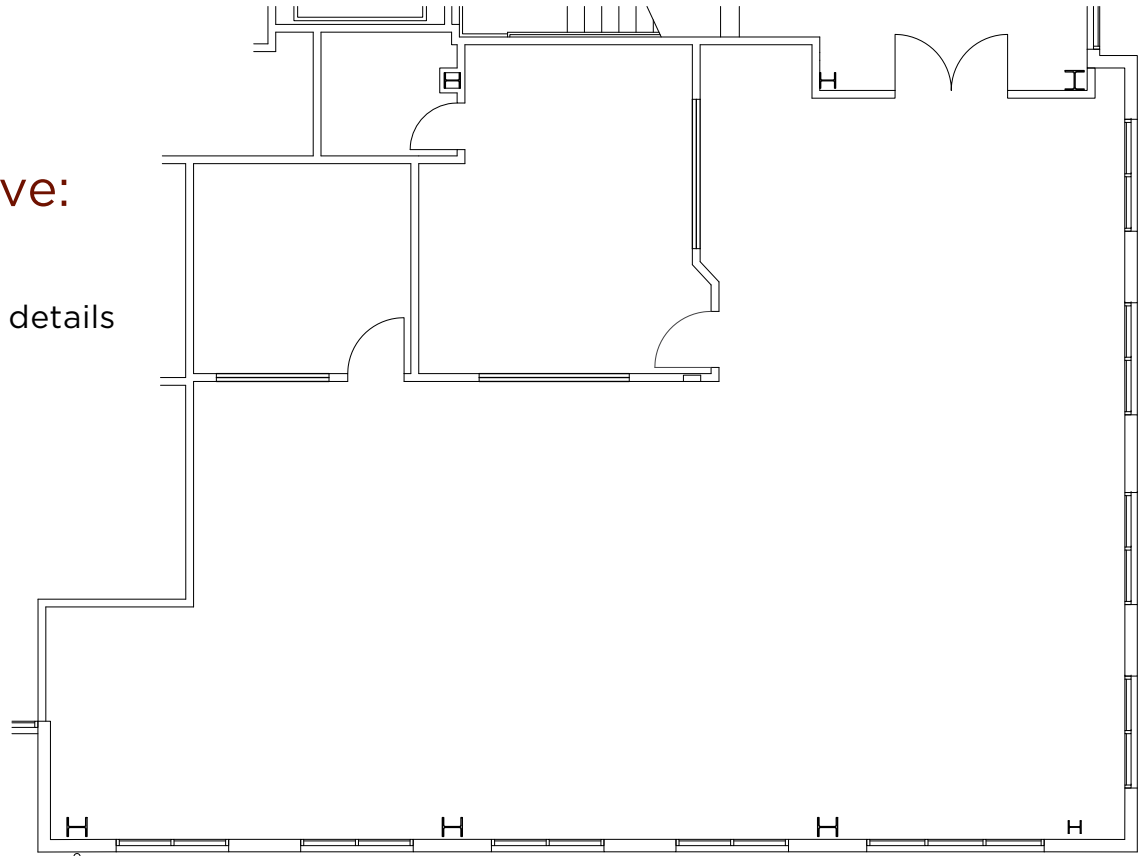
Suite 101

Introducing New Leasing Incentive:
6 Months Free Rent*

*42-month minimum term, contact broker for more details

Space Highlights

- Modern, creative office space
- Open and exposed ceilings throughout
- Extensive glass-line



View
Virtual
Tour



Jones Lang LaSalle Brokerage, Inc.
Real Estate License # 01856260

Tony Sarno
tony.sarno@jll.com
707.217.7196
RE License# 01430933

Jordan Lazor
jordan.lazor@jll.com
415.595.5102
RE License# 0201117

Laura Duffy
laura.duffy@jll.com
415.686.0255
RE License# 01922792

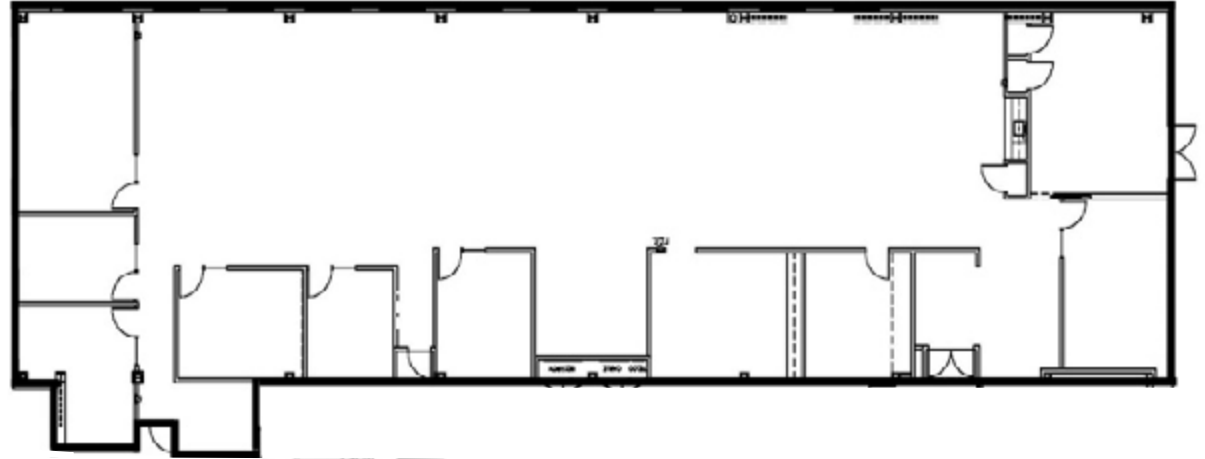
Glen Dowling
glen.dowling@jll.com
707.227.7800
RE License# 0890450

7,598 RSF

Suite 111

Space Highlights

- Open and exposed ceilings throughout
- Extensive glass-line
- Modern finishes throughout
- LED: 10/31/23



View
Virtual
Tour



Jones Lang LaSalle Brokerage, Inc.
Real Estate License # 01856260

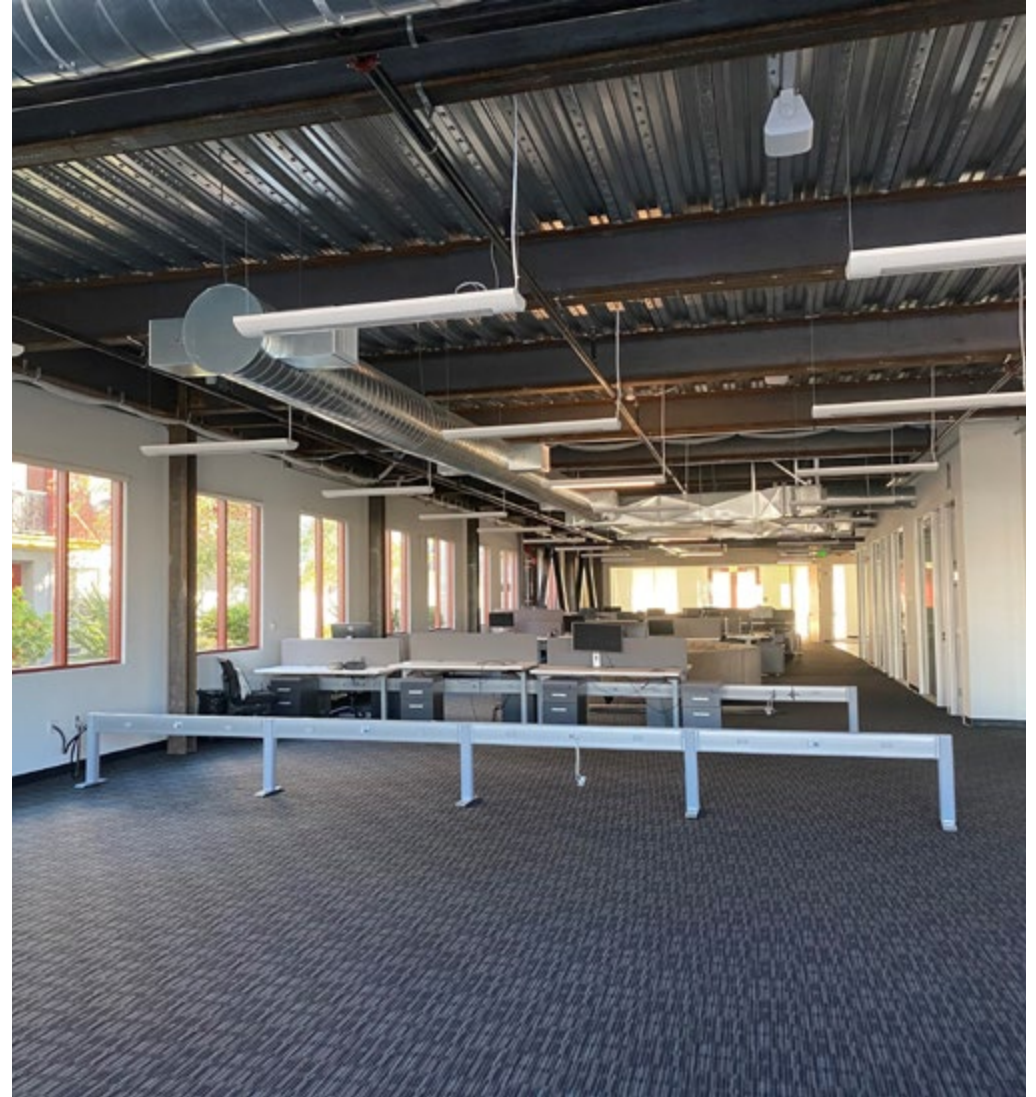
Tony Sarno
tony.sarno@jll.com
707.217.7196
RE License# 01430933

Jordan Lazor
jordan.lazor@jll.com
415.595.5102
RE License# 0201117

Laura Duffy
laura.duffy@jll.com
415.686.0255
RE License# 01922792

Glen Dowling
glen.dowling@jll.com
707.227.7800
RE License# 0890450

FOR LEASE Petaluma Waterfront Office



Jones Lang LaSalle Brokerage, Inc.
Real Estate License # 01856260

Tony Sarno
tony.sarno@jll.com
707.217.7196
RE License# 01430933

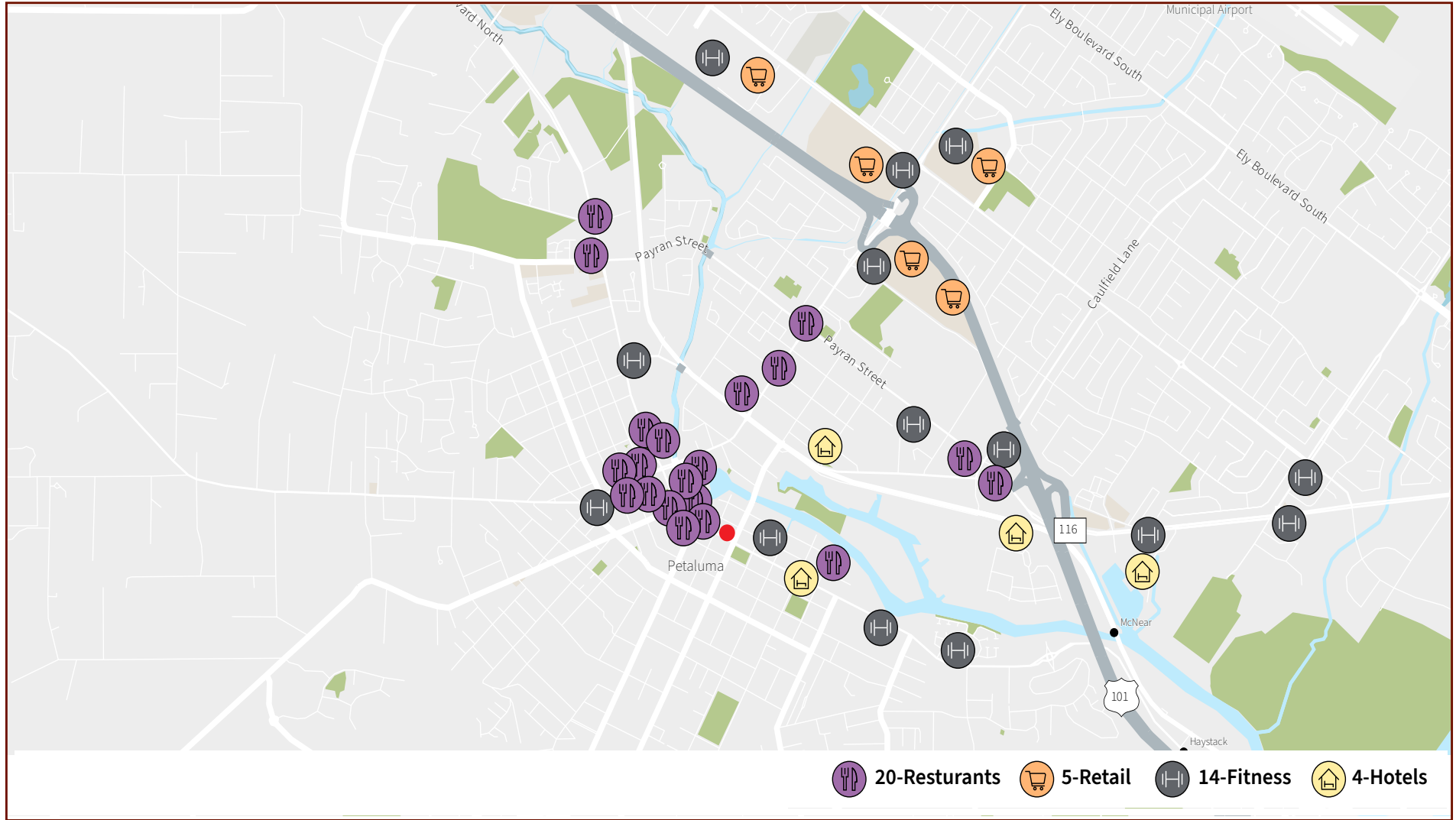
Jordan Lazor
jordan.lazor@jll.com
415.595.5102
RE License# 0201117

Laura Duffy
laura.duffy@jll.com
415.686.0255
RE License# 01922792

Glen Dowling
glen.dowling@jll.com
707.227.7800
RE License# 0890450

FOR LEASE **Petaluma**

Abundant Nearby Amenities



Tony Sarno
tony.sarno@jll.com
707.217.7196
RE License# 01430933

Jordan Lazor
jordan.lazor@jll.com
415.595.5102
RE License# 0201117

Laura Duffy
laura.duffy@jll.com
415.686.0255
RE License# 01922792

Glen Dowling
glen.dowling@jll.com
707.227.7800
RE License# 0890450



Although information has been obtained from sources deemed reliable, neither Owner nor JLL makes any guarantees, warranties or representations, express or implied, as to the completeness or accuracy as to the information contained herein. Any projections, opinions, assumptions or estimates used are for example only. There may be differences between projected and actual results, and those differences may be material. The Property may be withdrawn without notice. Neither Owner nor JLL accepts any liability for any loss or damage suffered by any party resulting from reliance on this information. If the recipient of this information has signed a confidentiality agreement regarding this matter, this information is subject to the terms of that agreement. ©2023. Jones Lang LaSalle IP, Inc. All rights reserved. Jones Lang LaSalle Brokerage, Inc. Real Estate License #: 01856260