



BASIN STREET
PROPERTIES



**CUSHMAN &
WAKEFIELD**

FOR LEASE

MOVE IN READY WITH FURNITURE IN PLACE

CONTACT: +1 415 485 0500



1800-2000

S. MCDOWELL BLVD | PETALUMA, CA

1800-2100 S. MCDOWELL

HIGHLIGHTS

Class 'A' office space

- Expansive glass lines offering abundant natural light and quality views of the adjacent Shollenberger Park
- Finished ceiling height ranging from 10' to 18'
- Near Starbucks, restaurants and other food and beverage amenities
- Prompt decision-making and uncomplicated negotiations by local, reputable owner
- Showers & lockers
- Bordering 500 acres of protected wetlands bird sanctuary at Shollenberger Park, featuring walking paths, work out opportunities, or just an escape from the office.
- Just blocks from additional retail centers offering Lakeville Fitness, many other restaurant choices and retail services.
- Easy access to Highways 116 and 101, 37, and downtown Petaluma.

STEVEN LEONARD

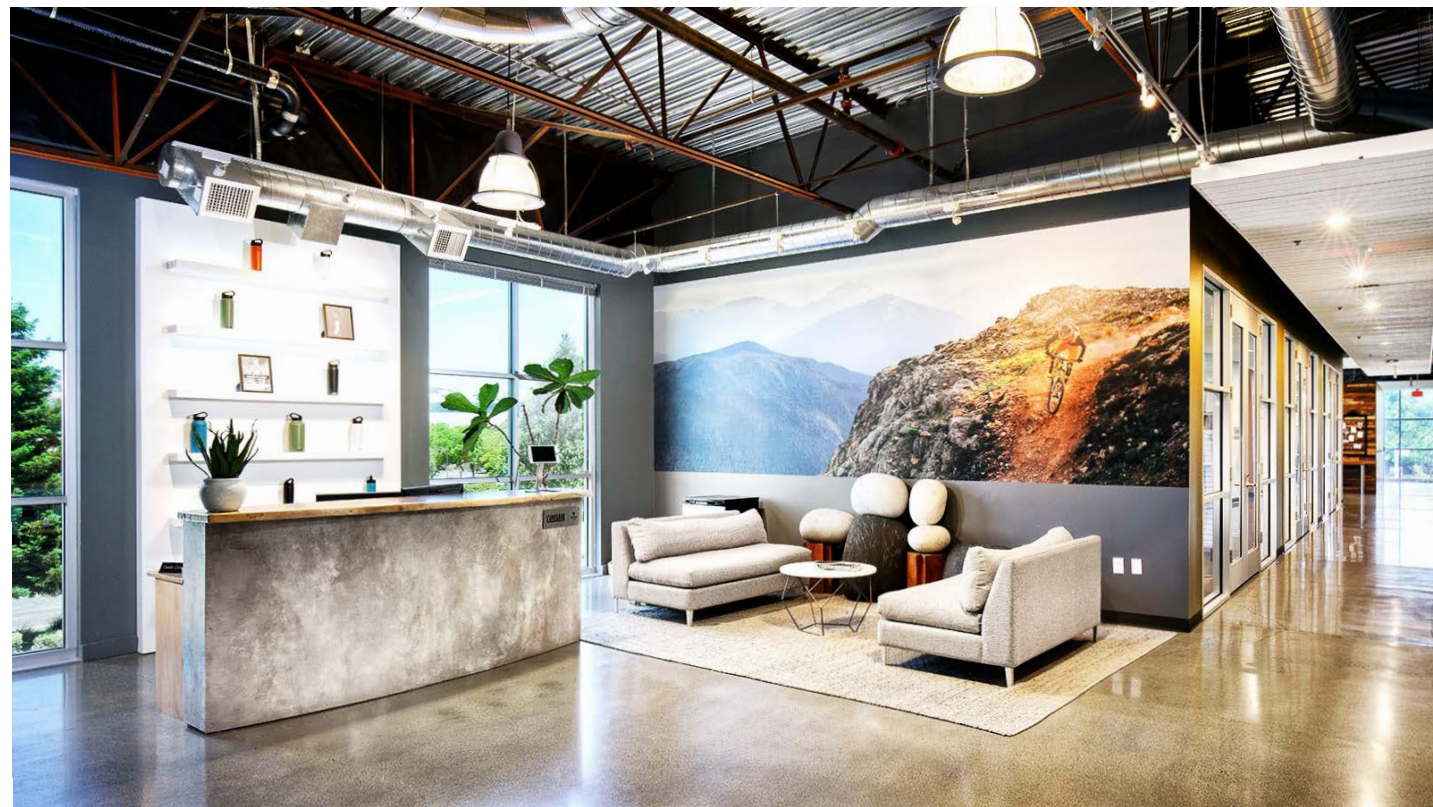
Managing Director
+1 415 722 1080
Lic #00909604

TREVOR BUCK

Executive Managing Director
+1 415 451 2436
Lic #01255462

BRIAN FOSTER

Executive Director
+1 415 451 2437
Lic #01393059





PETALUMA, CALIFORNIA

SPACE AVAILABLE

1800

Suite 210: ±13,523 SF (\$2.40 Full Service)

Suite 220: ±8,165 SF (\$2.40 Full Service)

Suite 230: ±7,202 SF (\$2.40 Full Service)

Total: ±28,890 SF (Contiguous)

2000

Suite 100: ±18,582 SF (\$2.40 Full Service)

Suite 210: ±4,075 SF (\$2.40 Full Service)

Suite 220: ±3,335 SF (\$2.40 Full Service)



STEVEN LEONARD

Managing Director
+1 415 722 1080
Lic #00909604

TREVOR BUCK

Executive Managing Director
+1 415 451 2436
Lic #01255462

BRIAN FOSTER

Executive Director
+1 415 451 2437
Lic #01393059

1ST FLOOR PLAN

- SPACE AVAILABLE:
Suite 100: ±18,582 SF
(\$2.40 Full Service)
Divisible



SHOLLENBERGER PARK SIDE







BASIN STREET
PROPERTIES

2000 S. MCDOWELL





BASIN STREET
PROPERTIES

2000 S. MCDOWELL

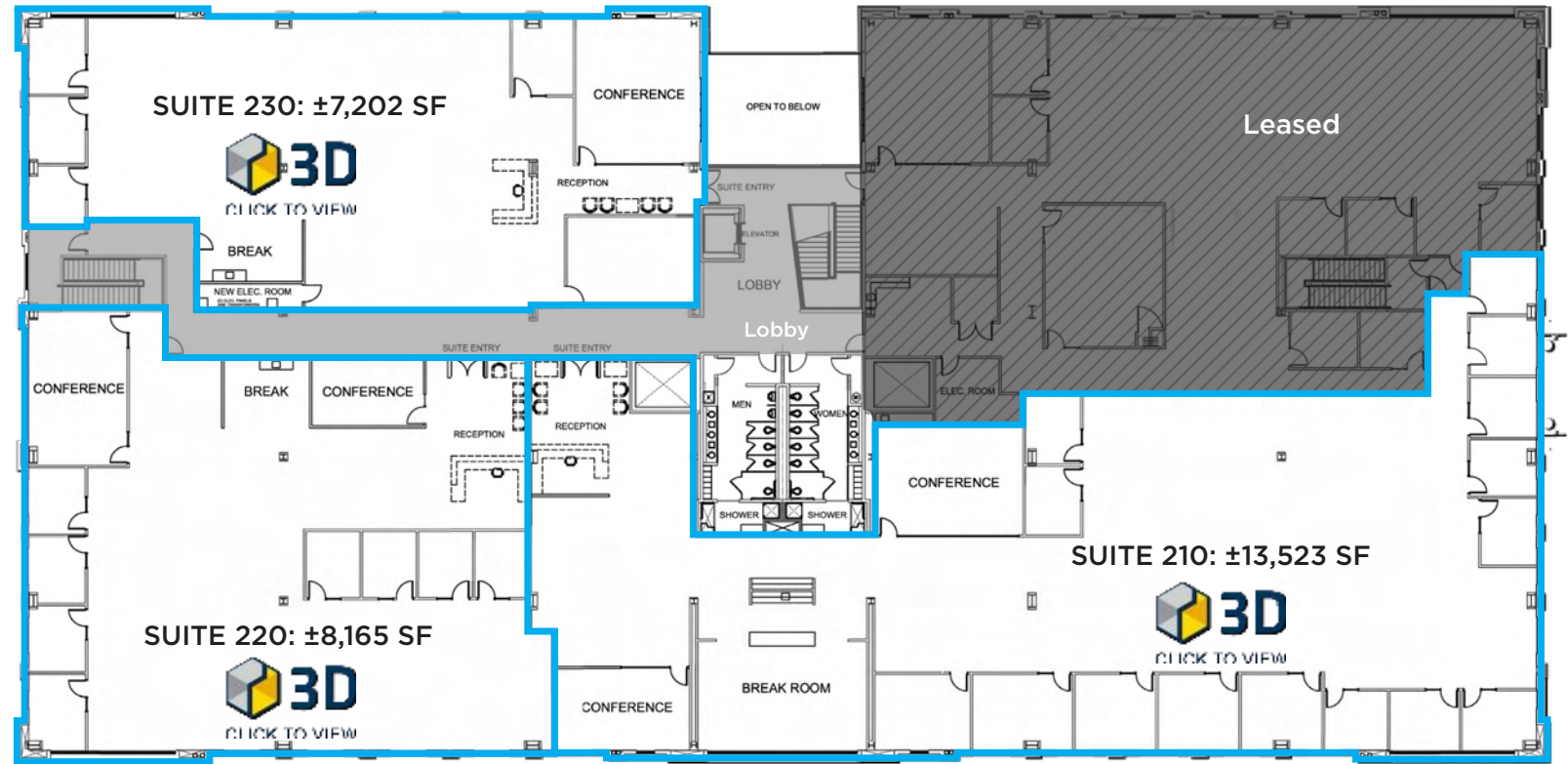


20 New EV Charging
Stations!

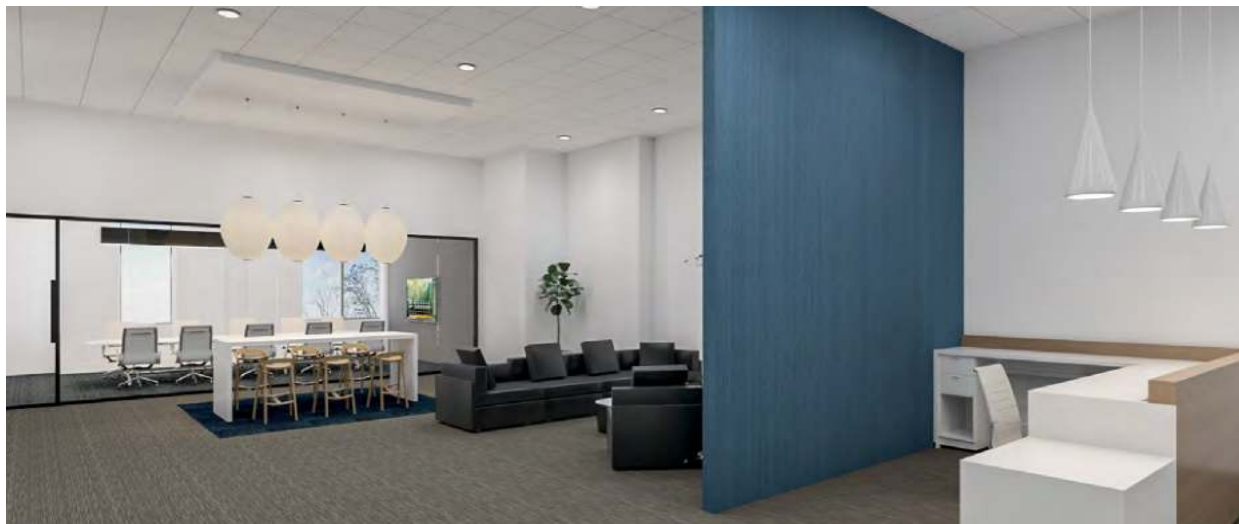


2ND FLOOR PLAN

- SPACE AVAILABLE:
Suite 210: ±13,523 SF
Suite 220: ±8,165 SF
Suite 230: ±7,202 SF
Total: ±28,890 SF
(\$2.40 Full Service)



1800 S. MCDOWELL



SUITE 210 - ±13,523 SF

1800 S. MCDOWELL



FINAL PROGRAMMING METRICS

13,523

Approx. Rentable Square Feet

73

Number of Assigned Seats

185

Approx. RSF per Assigned Seat

Individual Spaces	Provided
Workstations 5FT	58
Enclosed Office	15
Collaborative Spaces	
Meeting Room-10P	1
Meeting Room-16P	1
Library Booth	2
Open Collaboration	2
Lounge-8P	1
Support + Wellbeing Spaces	
Perch-6P	1
Cafe	1
Concierge/Greeting	1
IDF Room	1
File Cabinets	8
Copy-Print-Supply Point	1

©2020 Cushman & Wakefield. All rights reserved. The material in this presentation has been prepared solely for information purposes, and is strictly confidential. Any disclosure, use, copying or circulation of this presentation (or the information contained within it) is strictly prohibited, unless you have obtained Cushman & Wakefield's prior written consent. The views expressed in this presentation are the views of the author and do not necessarily reflect the views of Cushman & Wakefield. Neither this presentation nor any part of it shall form the basis of, or be relied upon in connection with any offer, or act as an inducement to enter into any contract or commitment whatsoever. NO REPRESENTATION OR WARRANTY IS GIVEN, EXPRESS OR IMPLIED, AS TO THE ACCURACY OF THE INFORMATION CONTAINED WITHIN THIS PRESENTATION, AND CUSHMAN & WAKEFIELD IS UNDER NO OBLIGATION TO SUBSEQUENTLY CORRECT IT IN THE EVENT OF ERRORS.

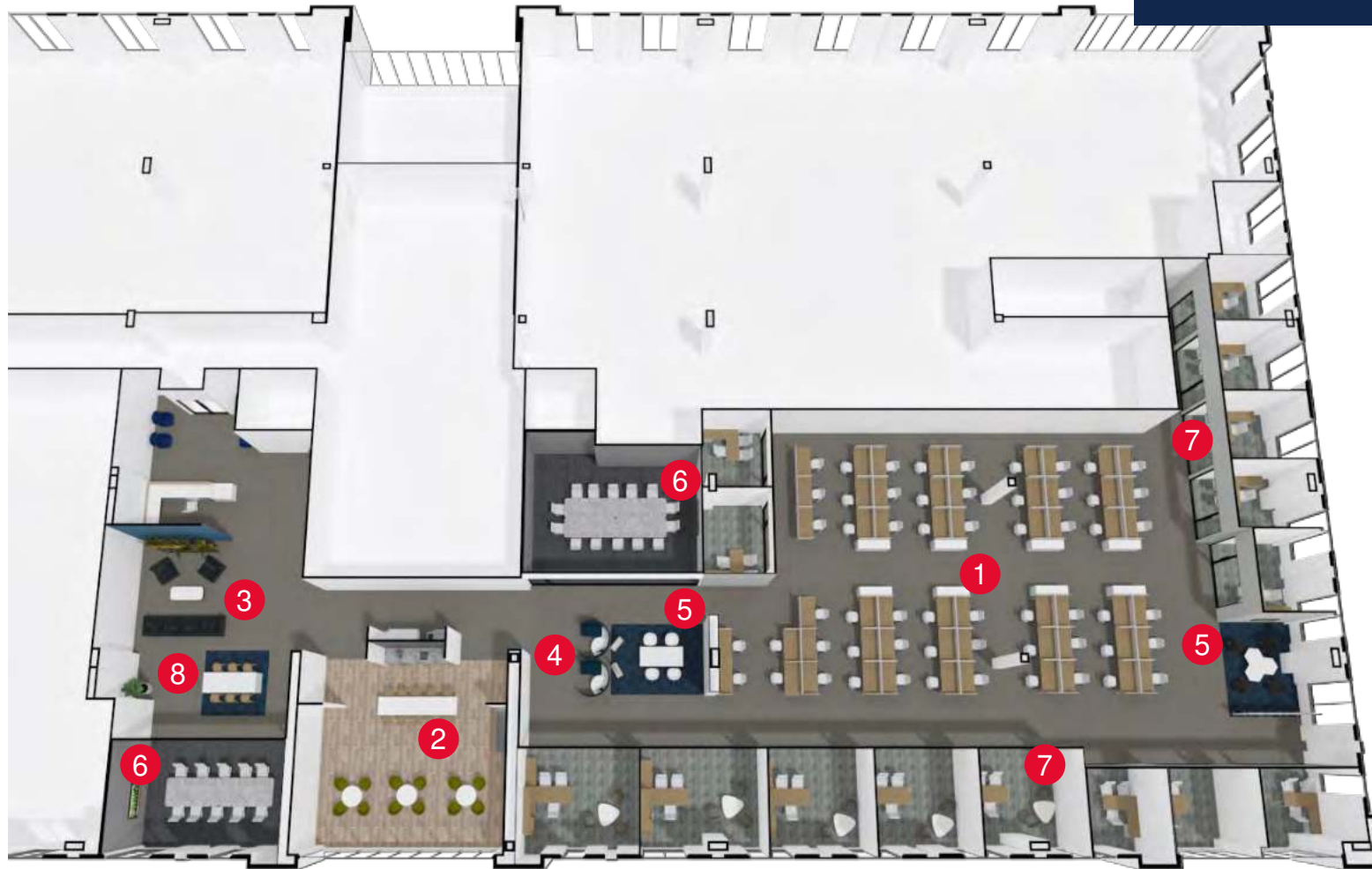
STEVEN LEONARD
 Managing Director
 +1 415 722 1080
 Lic #00909604

TREVOR BUCK
 Executive Managing Director
 +1 415 451 2436
 Lic #01255462

BRIAN FOSTER
 Executive Director
 +1 415 451 2437
 Lic #01393059

SUITE 210

1800 S. MCDOWELL



- 1 WORKSTATIONS
- 2 CAFÉ
- 3 LOUNGE
- 4 LIBRARY BOOTHS
- 5 OPEN COLLABORATION
- 6 MEETING ROOM
- 7 OFFICE
- 8 PERCH

©2020 Cushman & Wakefield. All rights reserved. The material in this presentation has been prepared solely for information purposes, and is strictly confidential. Any disclosure, use, copying or circulation of this presentation (or the information contained within it) is strictly prohibited, unless you have obtained Cushman & Wakefield's prior written consent. The views expressed in this presentation are the views of the author and do not necessarily reflect the views of Cushman & Wakefield. Neither this presentation nor any part of it shall form the basis of, or be relied upon in connection with any offer, or act as an inducement to enter into any contract or commitment whatsoever. NO REPRESENTATION OR WARRANTY IS GIVEN, EXPRESS OR IMPLIED, AS TO THE ACCURACY OF THE INFORMATION CONTAINED WITHIN THIS PRESENTATION, AND CUSHMAN & WAKEFIELD IS UNDER NO OBLIGATION TO SUBSEQUENTLY CORRECT IT IN THE EVENT OF ERRORS.

STEVEN LEONARD
Managing Director
+1 415 722 1080
Lic #00909604

TREVOR BUCK
Executive Managing Director
+1 415 451 2436
Lic #01255462

BRIAN FOSTER
Executive Director
+1 415 451 2437
Lic #01393059

SUITE 230 - ± 7,202 SF

Individual Spaces	Provided Seat Count	Support + Wellbeing Spaces	Provided
Workstations 5FT	27	Lounge-8P	1
Enclosed Office	9	Cafe	1
		Concierge/Greeting	1
Collaborative Spaces	Provided	Wellness Room	1
Focus Booth-2P	2	Storage	2
Huddle Room-4P	1	Electrical Room	1
Meeting Room-10P	1	IDF Room	1
Presentation Room-14P	1	Copy-Print-Supply Room	1
Perch	1		



1800 S. MCDOWELL

©2020 Cushman & Wakefield. All rights reserved. The material in this presentation has been prepared solely for information purposes, and is strictly confidential. Any disclosure, use, copying or circulation of this presentation (or the information contained within it) is strictly prohibited, unless you have obtained Cushman & Wakefield's prior written consent. The views expressed in this presentation are the views of the author and do not necessarily reflect the views of Cushman & Wakefield. Neither this presentation nor any part of it shall form the basis of, or be relied upon in connection with any offer, or act as an inducement to enter into any contract or commitment whatsoever. NO REPRESENTATION OR WARRANTY IS GIVEN, EXPRESS OR IMPLIED, AS TO THE ACCURACY OF THE INFORMATION CONTAINED WITHIN THIS PRESENTATION, AND CUSHMAN & WAKEFIELD IS UNDER NO OBLIGATION TO SUBSEQUENTLY CORRECT IT IN THE EVENT OF ERRORS.

STEVEN LEONARD
 Managing Director
 +1 415 722 1080
 Lic #00909604

TREVOR BUCK
 Executive Managing Director
 +1 415 451 2436
 Lic #01255462

BRIAN FOSTER
 Executive Director
 +1 415 451 2437
 Lic #01393059

SUITE 230

1800 S. MCDOWELL



[CLICK HERE FOR VIDEO TOUR](#)

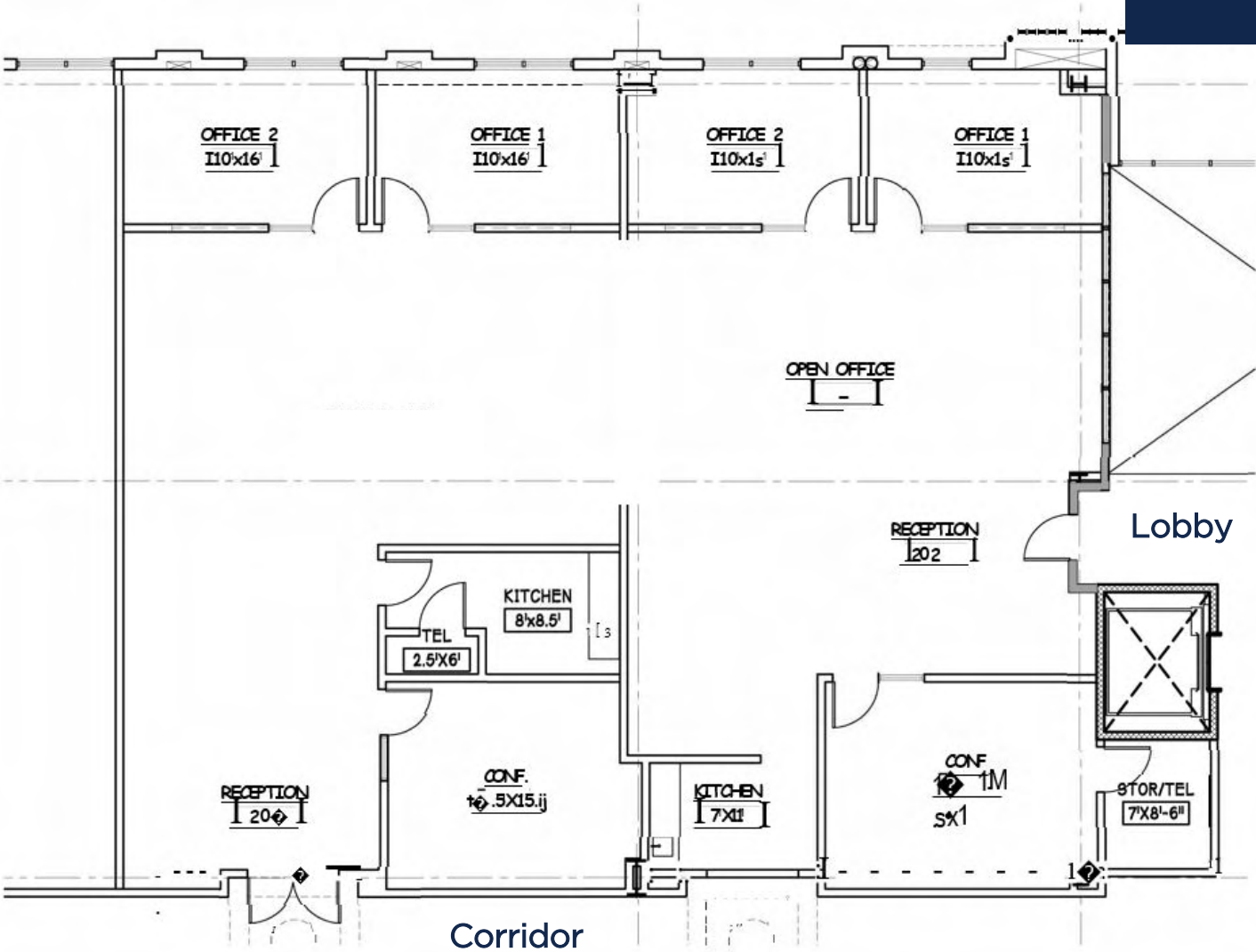
©2020 Cushman & Wakefield. All rights reserved. The material in this presentation has been prepared solely for information purposes, and is strictly confidential. Any disclosure, use, copying or circulation of this presentation (or the information contained within it) is strictly prohibited, unless you have obtained Cushman & Wakefield's prior written consent. The views expressed in this presentation are the views of the author and do not necessarily reflect the views of Cushman & Wakefield. Neither this presentation nor any part of it shall form the basis of, or be relied upon in connection with any offer, or act as an inducement to enter into any contract or commitment whatsoever. NO REPRESENTATION OR WARRANTY IS GIVEN, EXPRESS OR IMPLIED, AS TO THE ACCURACY OF THE INFORMATION CONTAINED WITHIN THIS PRESENTATION, AND CUSHMAN & WAKEFIELD IS UNDER NO OBLIGATION TO SUBSEQUENTLY CORRECT IT IN THE EVENT OF ERRORS.

STEVEN LEONARD
Managing Director
+1 415 722 1080
Lic #00909604

TREVOR BUCK
Executive Managing Director
+1 415 451 2436
Lic #01255462

BRIAN FOSTER
Executive Director
+1 415 451 2437
Lic #01393059

BUILDING 2000



• SPACE AVAILABLE:
Suite 210: ±4,075 SF

2000 S. MCDOWELL

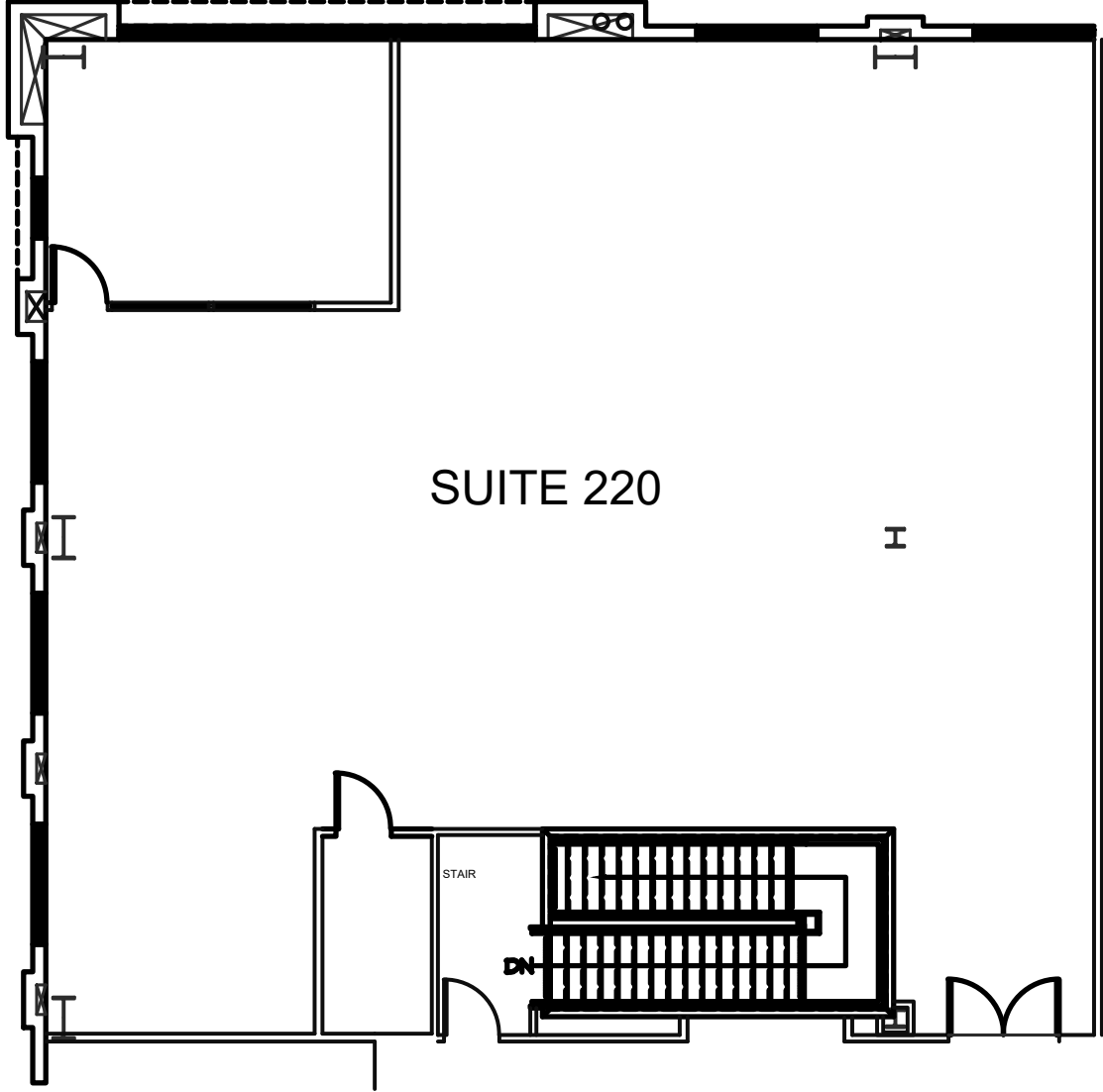
©2020 Cushman & Wakefield. All rights reserved. The material in this presentation has been prepared solely for information purposes, and is strictly confidential. Any disclosure, use, copying or circulation of this presentation (or the information contained within it) is strictly prohibited, unless you have obtained Cushman & Wakefield's prior written consent. The views expressed in this presentation are the views of the author and do not necessarily reflect the views of Cushman & Wakefield. Neither this presentation nor any part of it shall form the basis of, or be relied upon in connection with any offer, or act as an inducement to enter into any contract or commitment whatsoever. NO REPRESENTATION OR WARRANTY IS GIVEN, EXPRESS OR IMPLIED, AS TO THE ACCURACY OF THE INFORMATION CONTAINED WITHIN THIS PRESENTATION, AND CUSHMAN & WAKEFIELD IS UNDER NO OBLIGATION TO SUBSEQUENTLY CORRECT IT IN THE EVENT OF ERRORS.

STEVEN LEONARD
Managing Director
+1 415 722 1080
Lic #00909604

TREVOR BUCK
Executive Managing Director
+1 415 451 2436
Lic #01255462

BRIAN FOSTER
Executive Director
+1 415 451 2437
Lic #01393059

BUILDING 2000



• SPACE AVAILABLE:
Suite 220: ±3,335 SF

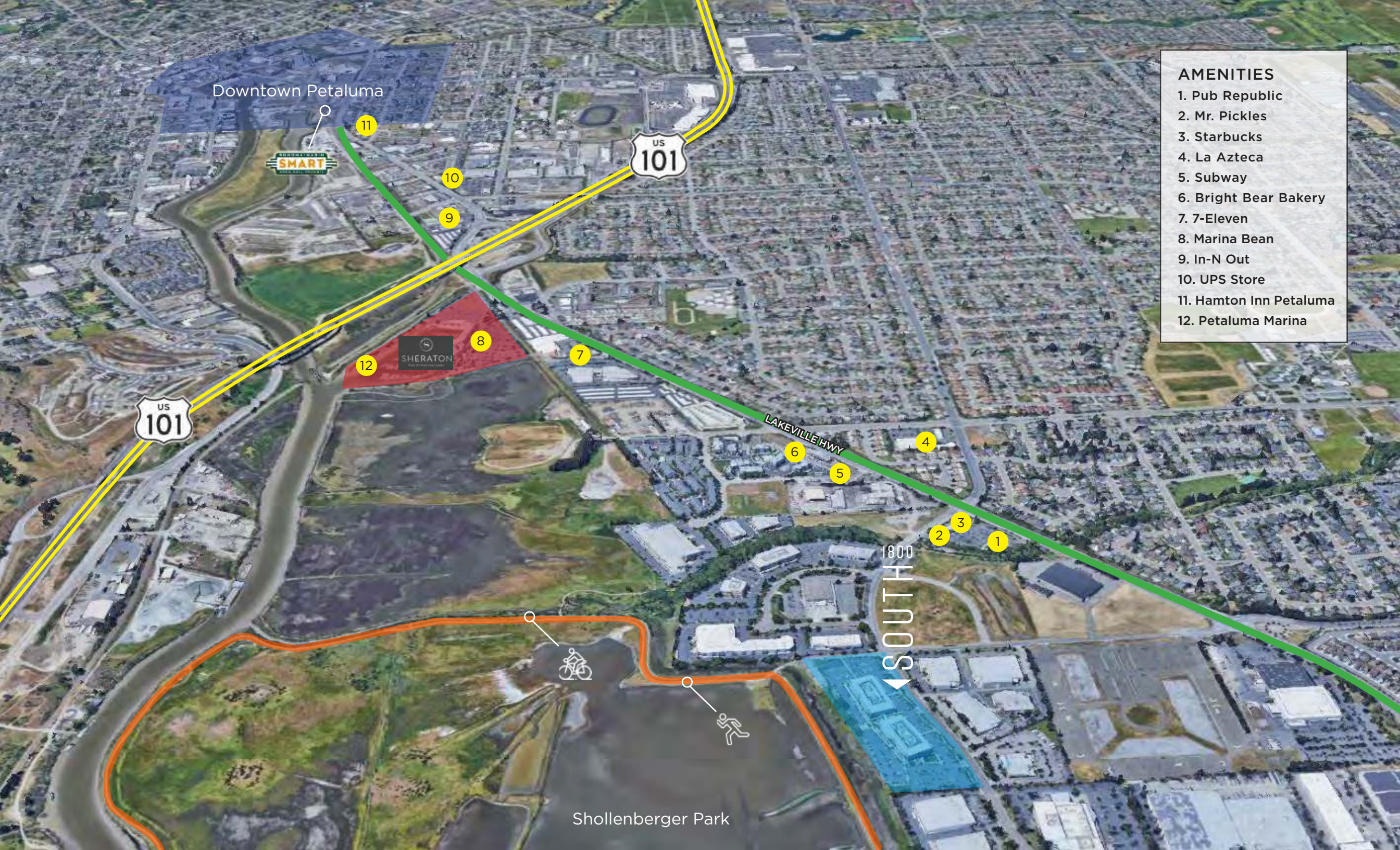
2000 S. MCDOWELL

©2020 Cushman & Wakefield. All rights reserved. The material in this presentation has been prepared solely for information purposes, and is strictly confidential. Any disclosure, use, copying or circulation of this presentation (or the information contained within it) is strictly prohibited, unless you have obtained Cushman & Wakefield's prior written consent. The views expressed in this presentation are the views of the author and do not necessarily reflect the views of Cushman & Wakefield. Neither this presentation nor any part of it shall form the basis of, or be relied upon in connection with any offer, or act as an inducement to enter into any contract or commitment whatsoever. NO REPRESENTATION OR WARRANTY IS GIVEN, EXPRESS OR IMPLIED, AS TO THE ACCURACY OF THE INFORMATION CONTAINED WITHIN THIS PRESENTATION, AND CUSHMAN & WAKEFIELD IS UNDER NO OBLIGATION TO SUBSEQUENTLY CORRECT IT IN THE EVENT OF ERRORS.

STEVEN LEONARD
Managing Director
+1 415 722 1080
Lic #00909604

TREVOR BUCK
Executive Managing Director
+1 415 451 2436
Lic #01255462

BRIAN FOSTER
Executive Director
+1 415 451 2437
Lic #01393059



Downtown Petaluma



LAKEVILLE HWY

1800 SOUTH

Shollenberger Park

- AMENITIES**
1. Pub Republic
 2. Mr. Pickles
 3. Starbucks
 4. La Azteca
 5. Subway
 6. Bright Bear Bakery
 7. 7-Eleven
 8. Marina Bean
 9. In-N Out
 10. UPS Store
 11. Hamton Inn Petaluma
 12. Petaluma Marina

11

10

9

12

8

7

6

5

4

2

3

1

ABOUT CUSHMAN & WAKEFIELD

The new Cushman & Wakefield draws on the best of both legacy organizations (DTZ and Cushman & Wakefield) to create one of the world's largest real estate services firms, with a combined total of \$5 billion in revenue, 43,000 employees, more than 4.3 billion square feet under management, and \$191 billion in transaction value. Cushman & Wakefield now operates in more than 60 countries around the world and is well positioned in every major market for continued growth.

The new Cushman & Wakefield is a top-tier global commercial real estate services provider in every service line and every major geography in the world. With a tenacious, entrepreneurial, and client-centric culture of highly skilled people behind both firms, the new company will be able to tap into greater resources worldwide to ultimately deliver superior results for clients. Please visit cushmanwakefield.com for more information.

ABOUT BASIN STREET PROPERTIES

Founded in 1974, Basin Street Properties has truly come a long way. The company has grown from the small entrepreneurial firm of the early years to owning and managing over five million square feet of commercial real estate across two states. As a privately held company, Basin Street remains unique in the industry relative to the speed and ease that decisions – and deals – can be made.

Basin Street's investment in Petaluma is clearly their principal legacy; it has changed the fabric of that town forever. The company has demonstrated a profound understanding of how real estate can change a community, and strives to shape that impact with every development or investment in their current markets of Petaluma, Santa Rosa, Sacramento and Reno. Today, Basin Street has the right team in place to successfully navigate rapid growth. Just like in days past, their focus remains on "creating environments where you can thrive."



BASIN STREET
PROPERTIES

BRIAN FOSTER



STEVEN LEONARD



TREVOR BUCK



SCOTT STRANZL



MIKE WILLIAMS



BRIAN FOSTER

BRIAN.FOSTER@CUSHWAKE.COM

+1 415 451 2437

LIC #01393059

STEVEN LEONARD

STEVEN.LEONARD@CUSHWAKE.COM

+1 415 722 1080

LIC #00909604

TREVOR BUCK

TREVOR.BUCK@CUSHWAKE.COM

+1 415 451 2436

LIC #01255462



CUSHMAN &
WAKEFIELD



BASIN STREET
PROPERTIES

BRIAN FOSTER

BRIAN.FOSTER@CUSHWAKE.COM

+1 415 451 2437

LIC #01393059

STEVEN LEONARD

STEVEN.LEONARD@CUSHWAKE.COM

+1 415 722 1080

LIC #00909604

TREVOR BUCK

TREVOR.BUCK@CUSHWAKE.COM

+1 415 451 2436

LIC #01255462