

FOR LEASE THEATRE DISTRICT

165 1st Street: ±8,223 SF

169 C Street: ±2,625 SF



TWO CLASS 'A' SPACES AVAILABLE

PROPERTY HIGHLIGHTS

THEATRE DISTRICT

165 1st Street & 169 C Street



165 1st Street & 169 C Street are located in the heart of downtown Petaluma's Theatre District, the region's premier downtown location, in the center of it all.

Type:
Office & Retail

Address:
**165 1st Street & 169 C Street
Petaluma, CA**

Owned &
Managed by:

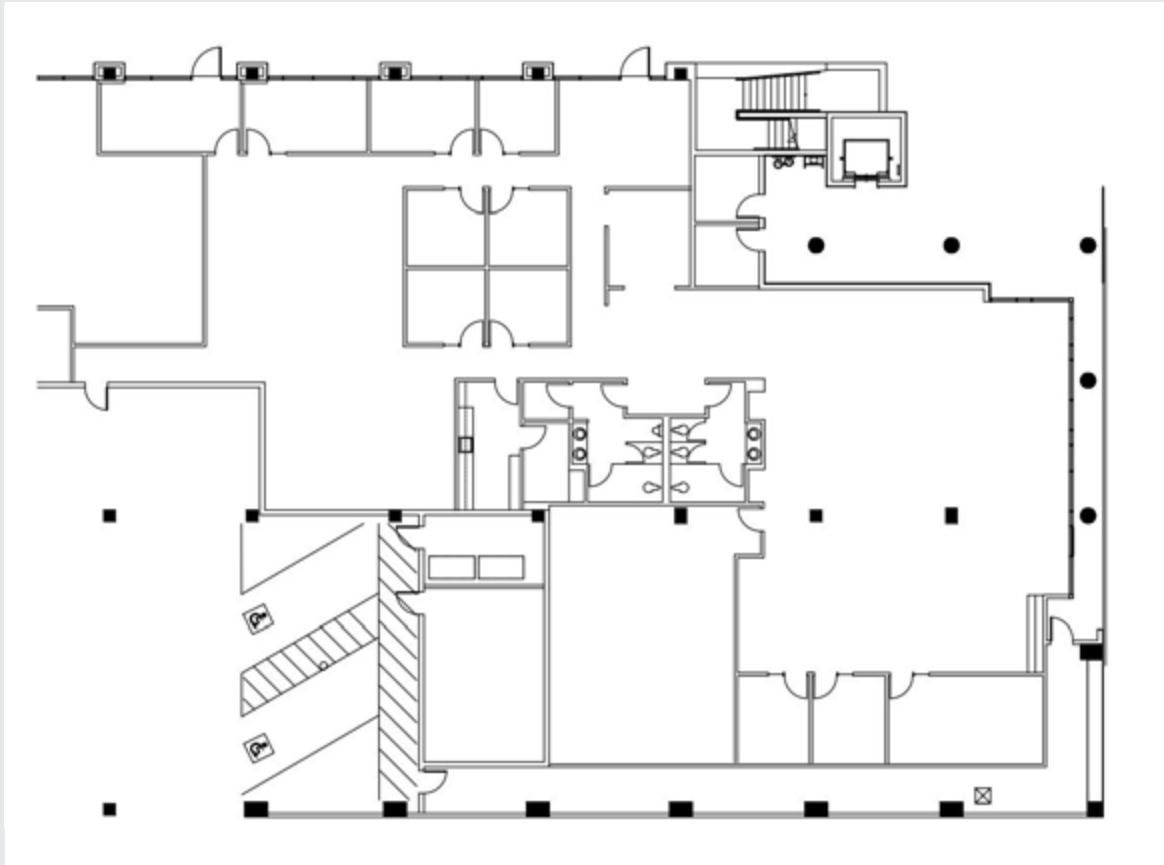


DESCRIPTION

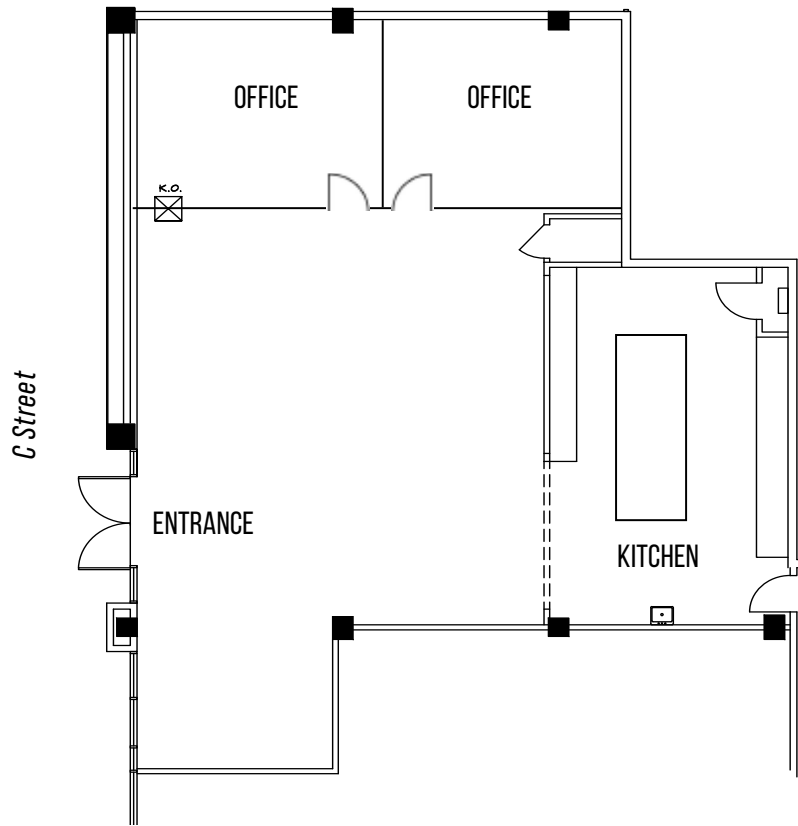
- Two class "A" spaces available
 - ▶ *165 1st Street: 8,223 SF office space*
 - ▶ *169 C Street: 2,625 SF retail space with potential for office use*
- Prompt decision-making & uncomplicated negotiations by local, reputable owner
- Abundant onsite amenities & free parking



165 1st Street ±8,223 SF

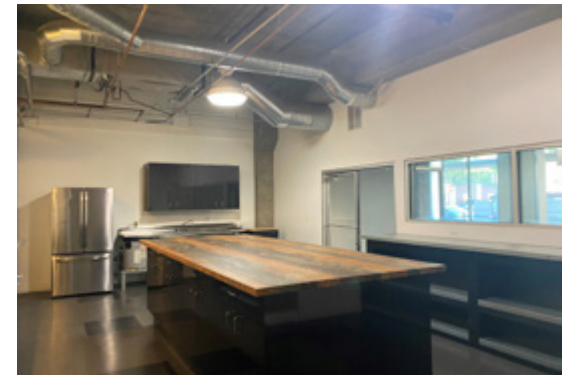


- ±8,223 SF office space
- High identity location
- 2 conference rooms
- 10 private offices
- Break room



169 C Street ±2,625 SF

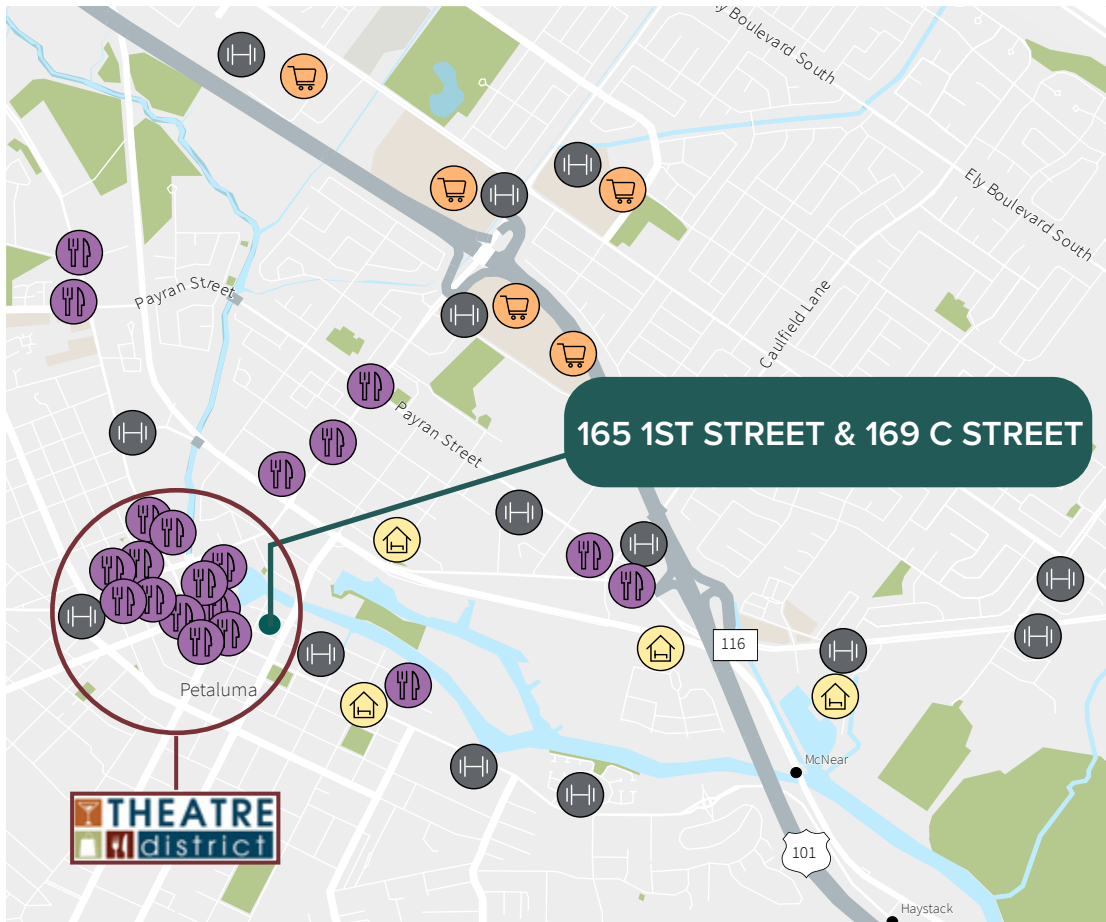
- ±2,625 SF retail or office space
- 2 private offices
- Full kitchen with stove and hood
- Built-in kitchen island
- Open, exposed ceilings
- Shared restrooms



LOCATION AMENITIES

In the heart of charming Petaluma you will find the region's premier open-air dining and retail destination venue featuring local downtown shopping, savory eateries and entertainment everyday of the year. Situated along the historic and scenic Petaluma River, visitors can shop, dine, and play the day away at this mixed-use lifestyle center.

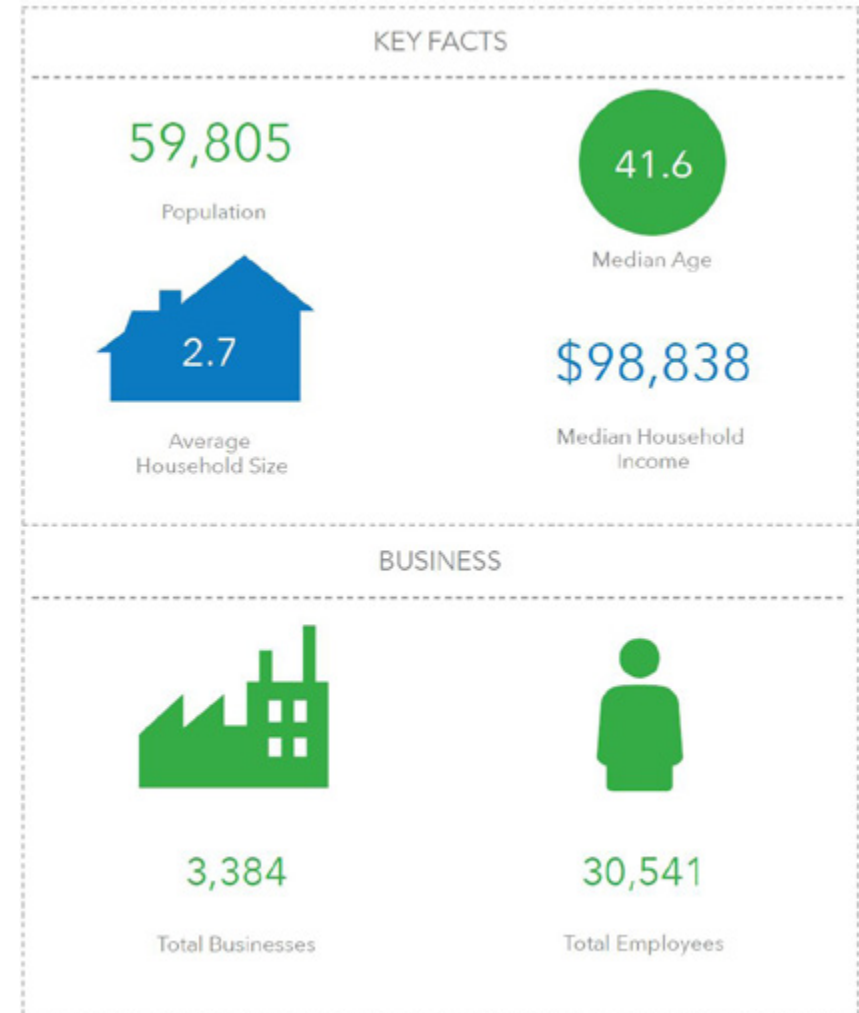
Abundant Retail Amenities | Downtown Petaluma



THEATRE DISTRICT

165 1st Street & 169 C Street

Healthy Petaluma Demographics:



FOR LEASE

165 1ST STREET & 169 C STREET, PETALUMA



Tony Sarno
tony.sarno@jll.com
707.217.7196
RE License# 01430933

Laura Duffy
laura.duffy@jll.com
415.686.0255
RE License# 01922792

Jordan Lazor
jordan.lazor@jll.com
415.595.5102
RE License# 02011117

Although information has been obtained from sources deemed reliable, neither Owner nor JLL makes any guarantees, warranties or representations, express or implied, as to the completeness or accuracy as to the information contained herein. Any projections, opinions, assumptions or estimates used are for example only. There may be differences between projected and actual results, and those differences may be material. The Property may be withdrawn without notice. Neither Owner nor JLL accepts any liability for any loss or damage suffered by any party resulting from reliance on this information. If the recipient of this information has signed a confidentiality agreement regarding this matter, this information is subject to the terms of that agreement. ©2023. Jones Lang LaSalle IP, Inc. All rights reserved.