



BASIN STREET
PROPERTIES



**CUSHMAN &
WAKEFIELD**

WAREHOUSE SPACE FOR LEASE

±6,001 SF



STEVEN LEONARD

Managing Director
+1 415 722 1080
steven.leonard@cushwake.com
Lic #00909604

BRIAN FOSTER

Executive Director
+1 415 451 2437
brian.foster@cushwake.com
Lic #01393059

TREVOR BUCK

Executive Managing Director
+1 415 451 2436
trevor.buck@cushwake.com
Lic #01255462

1616 CORPORATE CIRCLE
PETALUMA, CA

1616 CORPORATE CIRCLE

HIGHLIGHTS

- ±6,001 SF available
- 20' minimum clear height
- 1 grade level roll-up door
- 1 dock high roll-up door
- Asking rate \$1.25 PSF NNN
- 3/1,000 parking ratio
- Adjacent to Shollenberger Park with walking paths

STEVEN LEONARD

Managing Director
+1 415 722 1080
steven.leonard@cushwake.com
Lic #00909604

BRIAN FOSTER

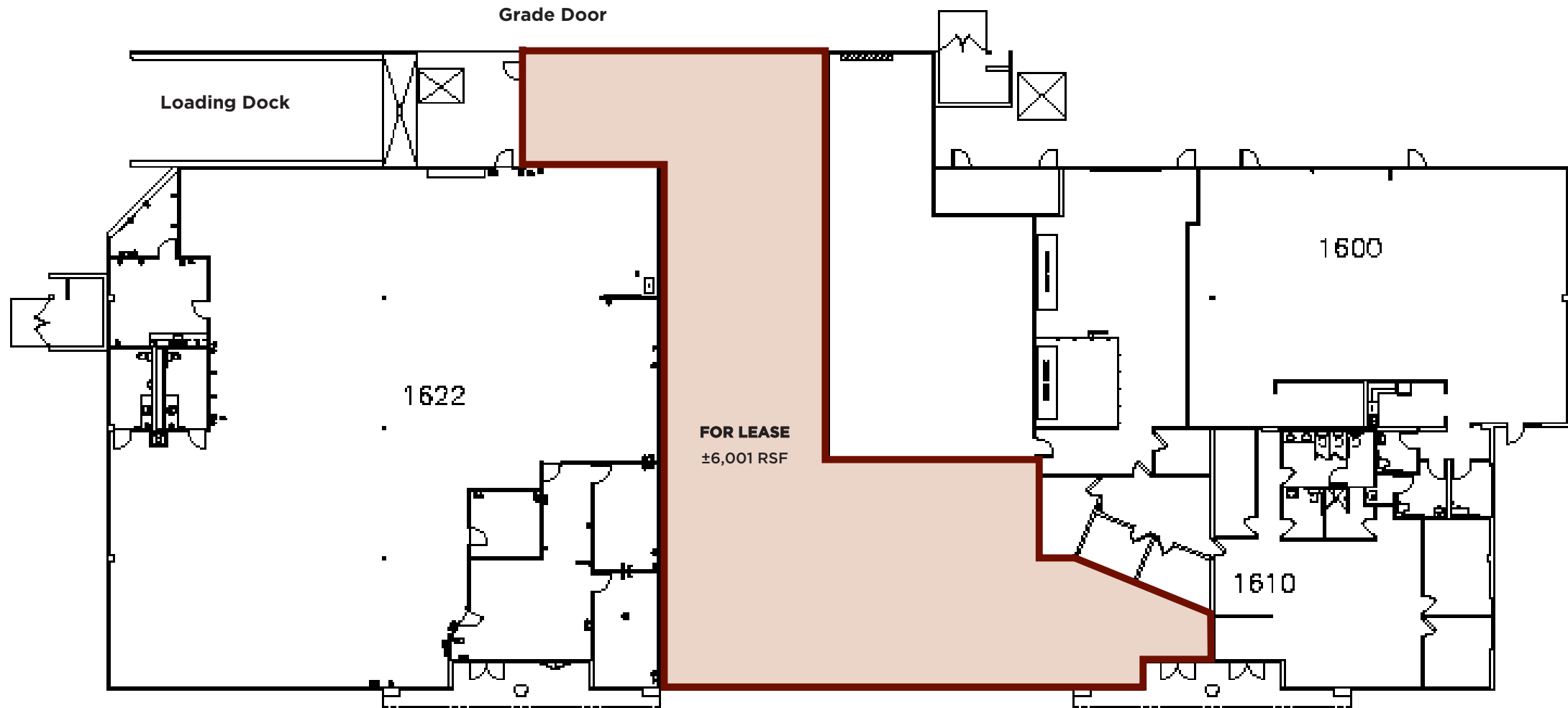
Executive Director
+1 415 451 2437
brian.foster@cushwake.com
Lic #01393059

TREVOR BUCK

Executive Managing Director
+1 415 451 2436
trevor.buck@cushwake.com
Lic #01255462



1616 CORPORATE CIRCLE



STEVEN LEONARD

Managing Director
+1 415 722 1080
steven.leonard@cushwake.com
Lic #00909604

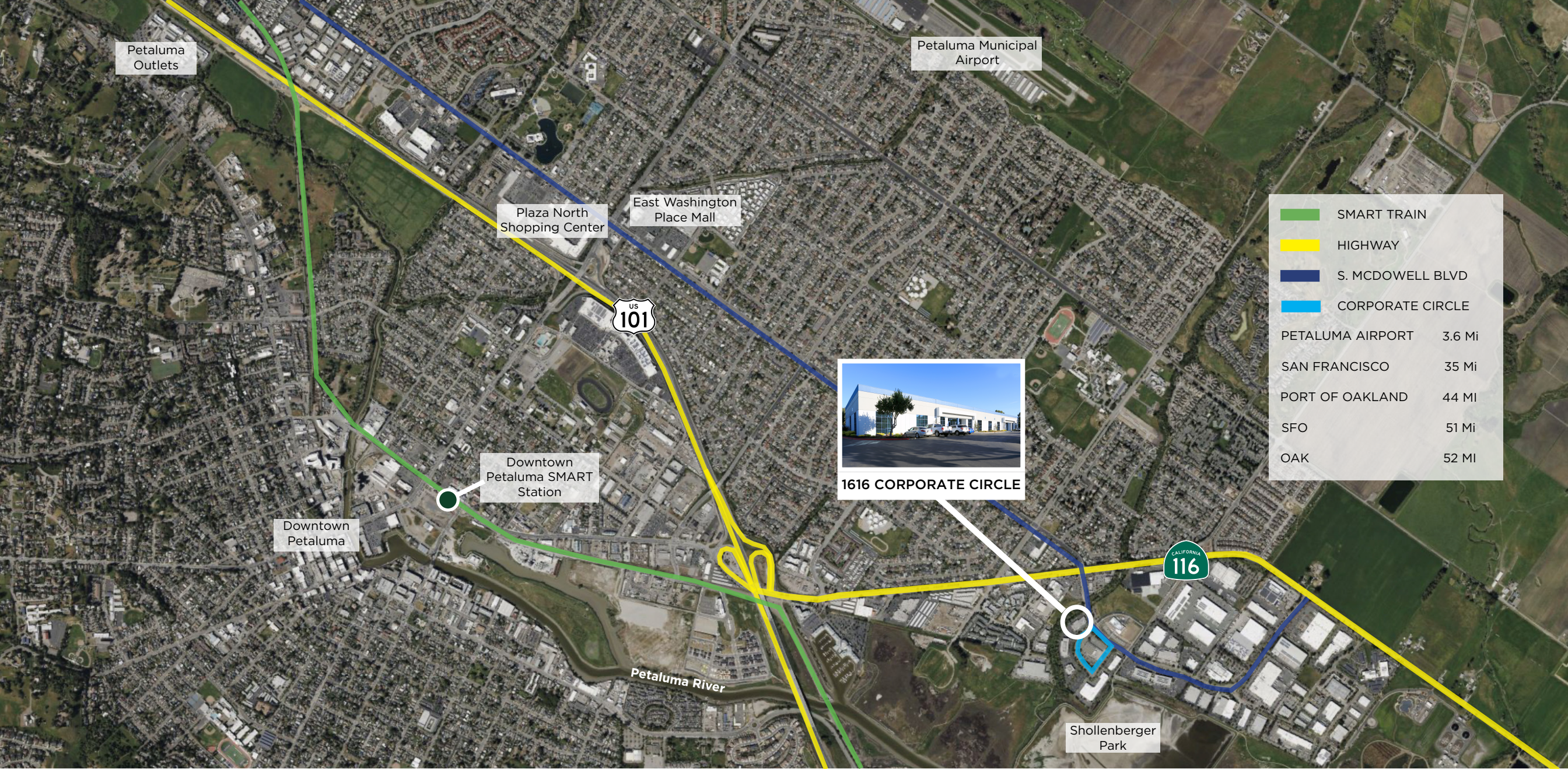
BRIAN FOSTER

Executive Director
+1 415 451 2437
brian.foster@cushwake.com
Lic #01393059

TREVOR BUCK

Executive Managing Director
+1 415 451 2436
trevor.buck@cushwake.com
Lic #01255462

©2024 Cushman & Wakefield. All rights reserved. The material in this presentation has been prepared solely for information purposes, and is strictly confidential. Any disclosure, use, copying or circulation of this presentation (or the information contained within it) is strictly prohibited, unless you have obtained Cushman & Wakefield's prior written consent. The views expressed in this presentation are the views of the author and do not necessarily reflect the views of Cushman & Wakefield. Neither this presentation nor any part of it shall form the basis of, or be relied upon in connection with any offer, or act as an inducement to enter into any contract or commitment whatsoever. NO REPRESENTATION OR WARRANTY IS GIVEN, EXPRESS OR IMPLIED, AS TO THE ACCURACY OF THE INFORMATION CONTAINED WITHIN THIS PRESENTATION, AND CUSHMAN & WAKEFIELD IS UNDER NO OBLIGATION TO SUBSEQUENTLY CORRECT IT IN THE EVENT OF ERRORS.



Petaluma

- Nike Factory Store
- Safeway
- Planet Fitness
- Brewster's Beer Garden
- FedEx Ship Center
- Wild Goat Bistro
- Levi's Outlet
- CVS
- Staples
- Crooked Goat Brewing
- Rustic Bakery
- Cucina Paradiso
- Lucky Supermarket
- Whole Foods
- Best Western
- Sol Food
- Taco Bell
- Hotel Petaluma
- Mi Pueblo
- McDonald's
- Buffalo Wild Wings
- Taps on the River
- Wendy's
- Paradise Sushi & Grill
- Trader Joe's
- Starbucks
- BevMo!
- In N Out
- Petaluma Market
- Boulevard 14 Cinema
- Target
- Party City
- Sprouts Farmers Market
- Courtyard by Marriott
- Ulta Beauty
- Sugo Trattoria



CUSHMAN &
WAKEFIELD



BASIN STREET
PROPERTIES

BRIAN FOSTER

BRIAN.FOSTER@CUSHWAKE.COM

+1 415 451 2437

LIC #01393059

STEVEN LEONARD

STEVEN.LEONARD@CUSHWAKE.COM

+1 415 722 1080

LIC #00909604

TREVOR BUCK

TREVOR.BUCK@CUSHWAKE.COM

+1 415 451 2436

LIC #01255462