

Great central location with Best-In-Class Amenities

# Point West Corporate Centre

Prominent Building Signage Available



EXCLUSIVELY MARKETED BY:  
**Todd Eschelman**  
916.569.2347  
teschelma@ngkf.com

EXCLUSIVELY MARKETED BY:  
**Kirk Lange**  
916.569.2331  
klange@ngkf.com

EXCLUSIVELY MARKETED BY:  
**Jack Blackmon**  
916.569.2372  
jack.blackmon@ngkf.com



PointWestPortfolio.com

## Highly desirable Point West Submarket



### Units from ±1,325 RSF - ±7,662 RSF

- Classic brick architecture with expansive windowline and courtyard views
- Onsite property manager & facilities engineer
- Onsite conference room and fitness center with showers
- Beautiful courtyard with shaded outdoor seating and outdoor water feature
- Located within minutes of Sacramento's CBD
- Restaurants and retail services immediately adjacent to the property
- Immediate freeway access to Business Hwy 80
- Onsite security patrol
- Short walk to Arden Fair Mall
- Onsite cafe

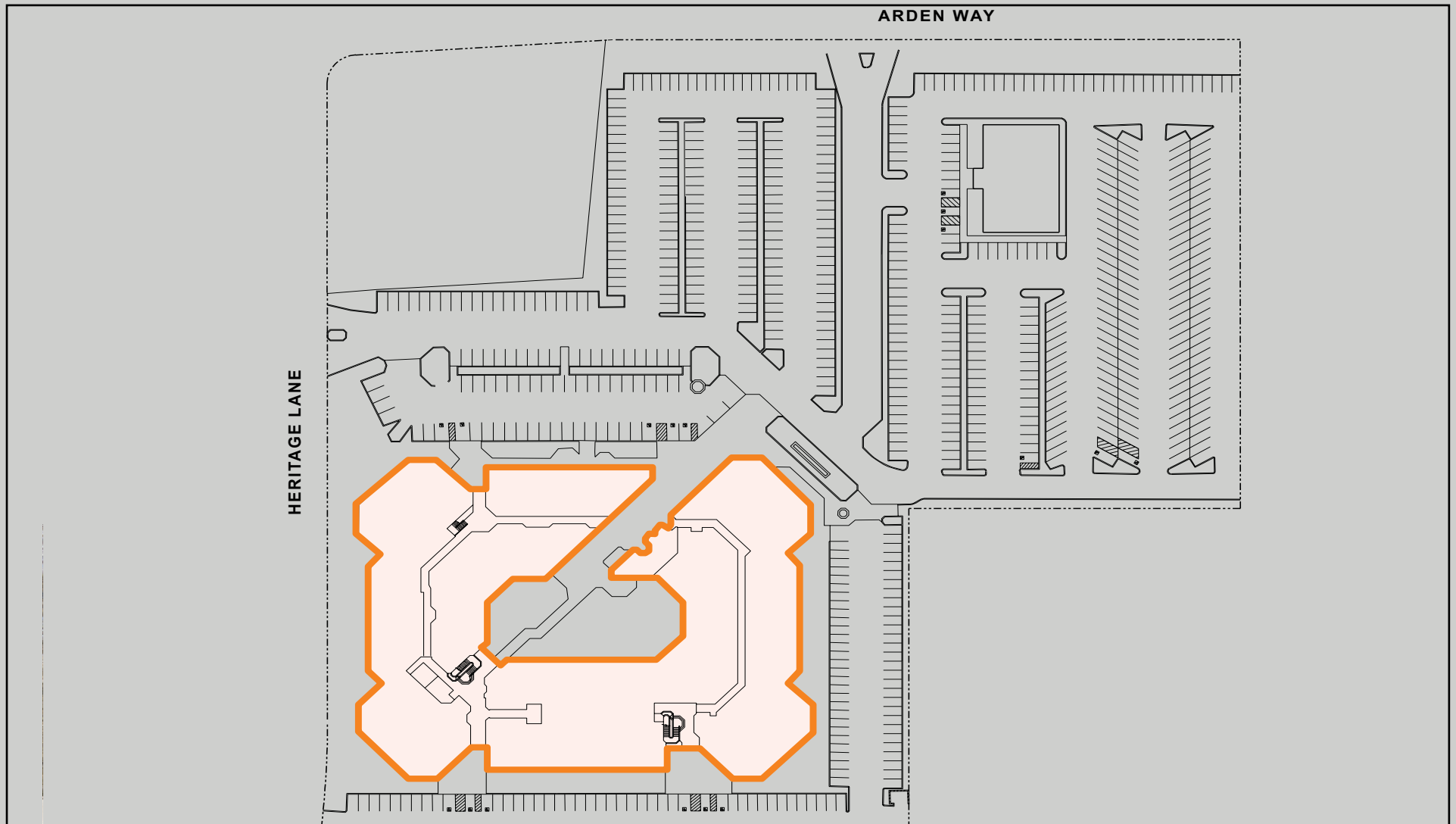
# 1610 Arden Way, Sacramento, CA Point West Corporate Center

PointWestPortfolio.com

## Highly desirable Point West Submarket



## Site Plan



# 1610 Arden Way, Sacramento, CA Point West Corporate Center

PointWestPortfolio.com

## Amenities Aerial & Location Map



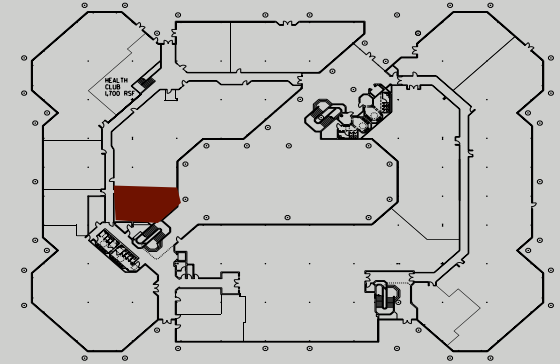
1610 Arden Way, Sacramento, CA  
Point West Corporate Center



PointWestPortfolio.com

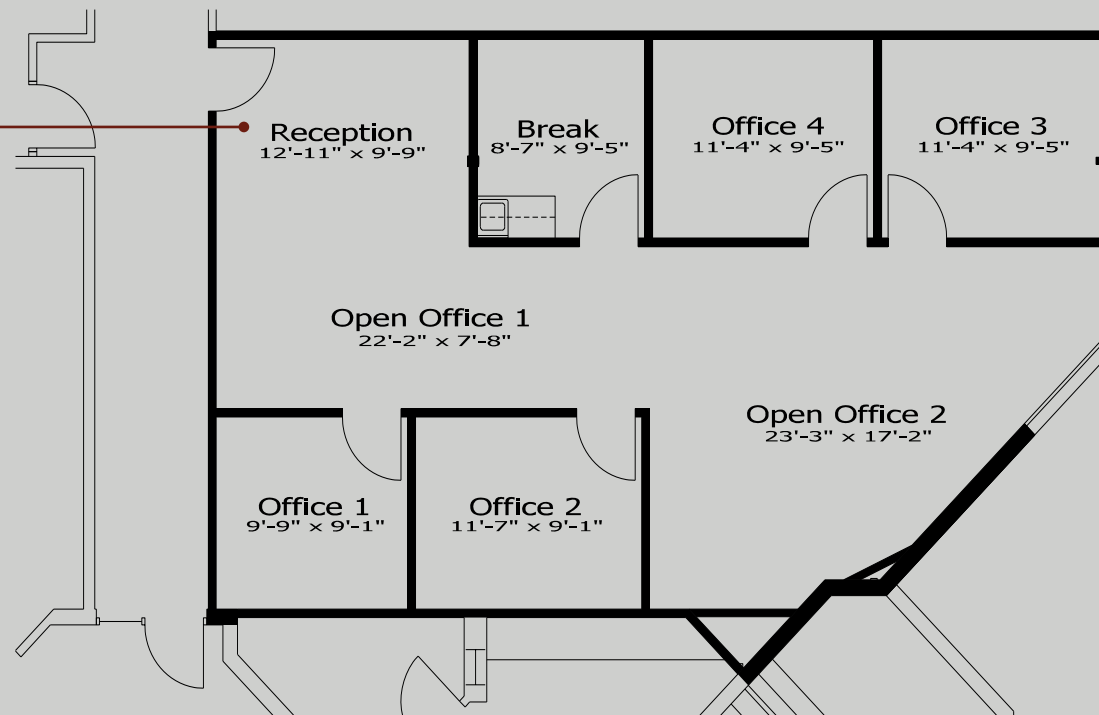
1,325 RSF  
SUITE 140

FIRST FLOOR



**CLICK HERE  
FOR PHOTOS**

Suite 140



EXCLUSIVELY MARKETED BY:  
**Todd Eschelman**  
916.569.2347  
teschelman@ngkf.com

EXCLUSIVELY MARKETED BY:  
**Kirk Lange**  
916.569.2331  
klange@ngkf.com

EXCLUSIVELY MARKETED BY:  
**Jack Blackmon**  
916.569.2372  
jack.blackmon@ngkf.com

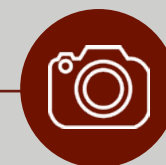
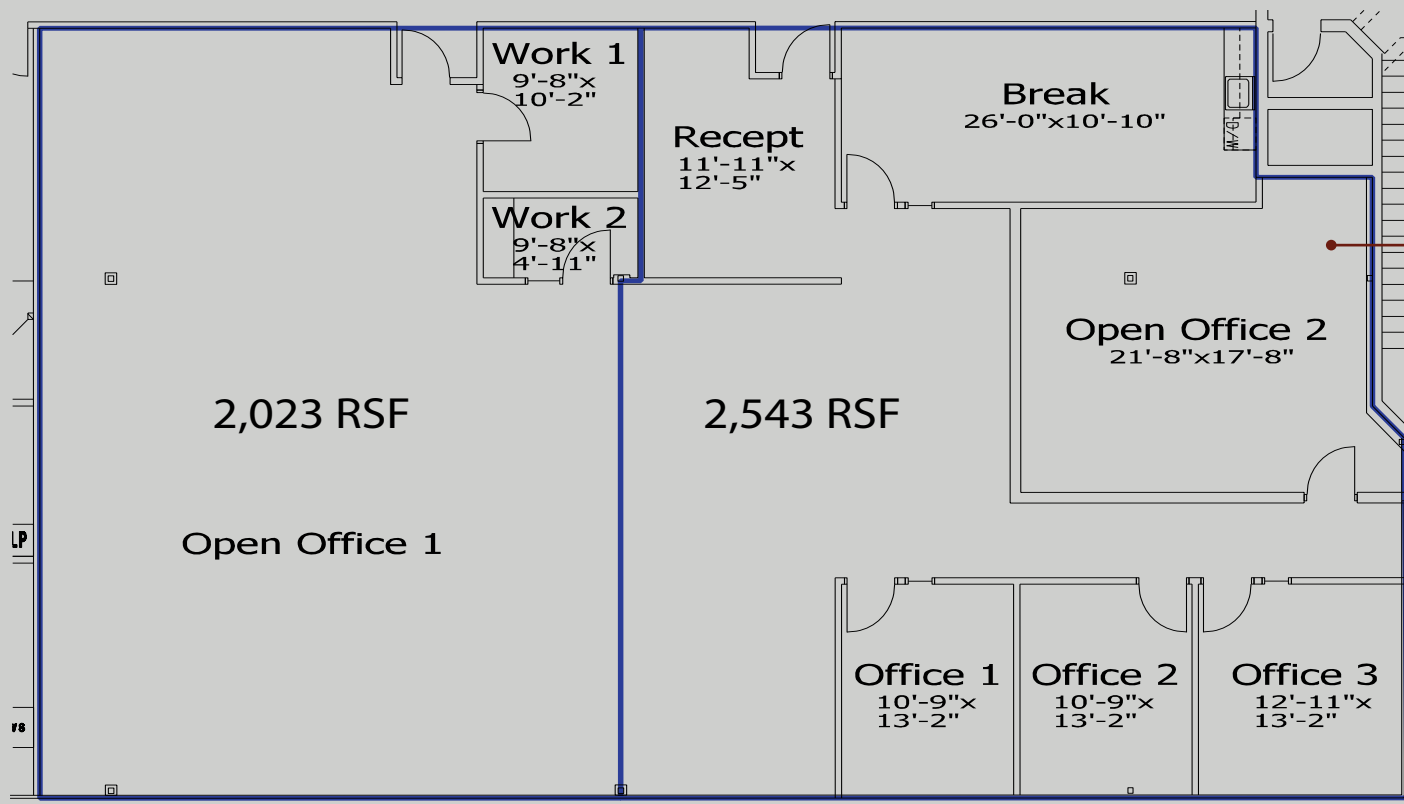
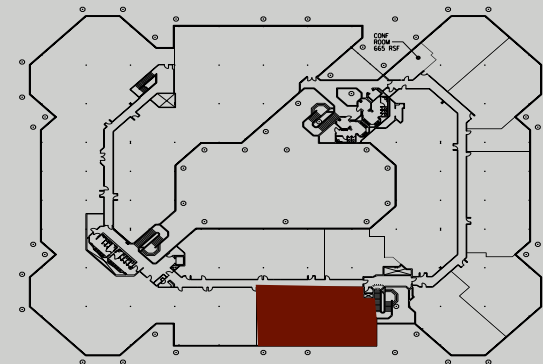
1610 Arden Way, Sacramento, CA  
Point West Corporate Center



PointWestPortfolio.com

2,023 - 4,566 RSF  
SUITE 270

SECOND FLOOR



**CLICK HERE  
FOR PHOTOS**

Suite 270



EXCLUSIVELY MARKETED BY:  
**Todd Eschelman**  
916.569.2347  
teschelman@ngkf.com

EXCLUSIVELY MARKETED BY:  
**Kirk Lange**  
916.569.2331  
klange@ngkf.com

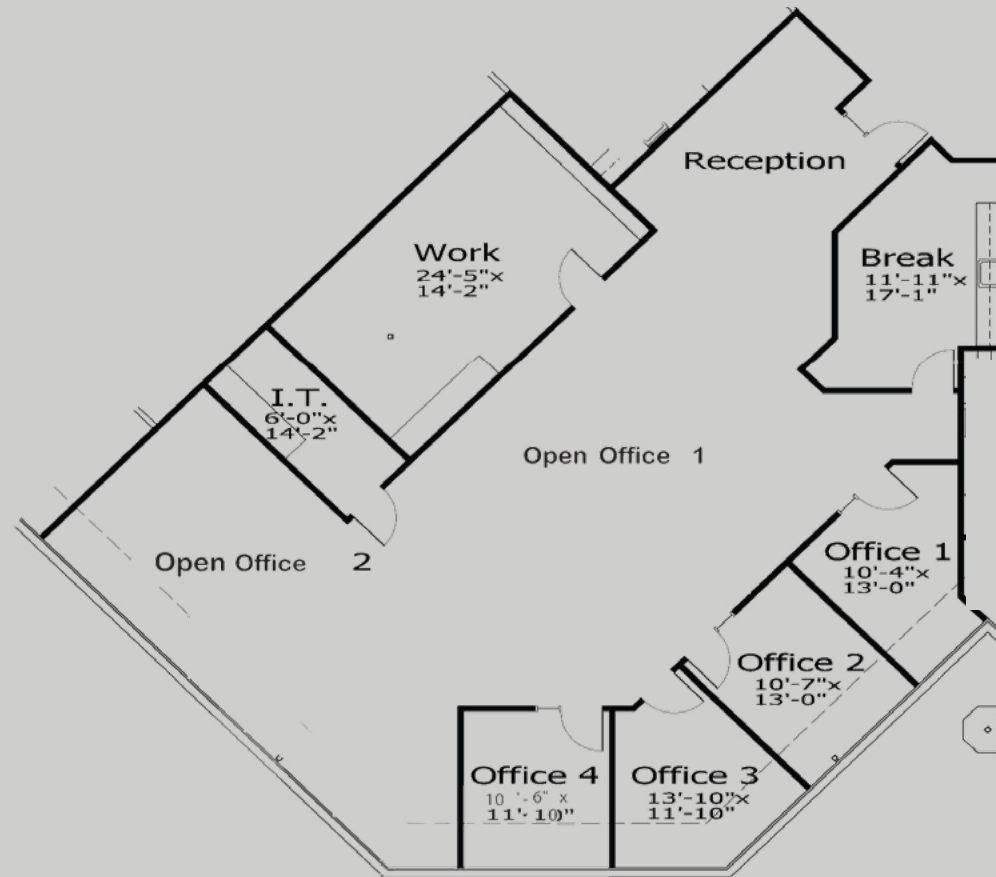
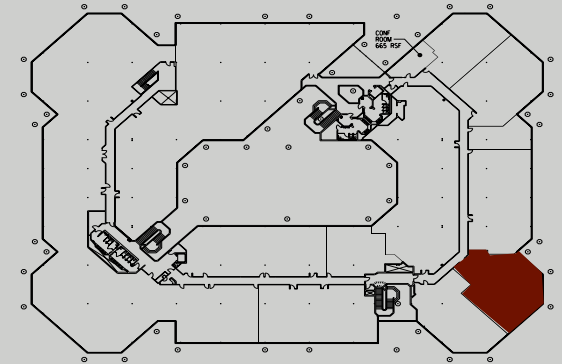
EXCLUSIVELY MARKETED BY:  
**Jack Blackmon**  
916.569.2372  
jack.blackmon@ngkf.com

1610 Arden Way, Sacramento, CA  
Point West Corporate Center



3,293 RSF  
SUITE 275

SECOND FLOOR



EXCLUSIVELY MARKETED BY:  
**Todd Eschelman**  
916.569.2347  
teschelma@ngkf.com

EXCLUSIVELY MARKETED BY:  
**Kirk Lange**  
916.569.2331  
klange@ngkf.com

EXCLUSIVELY MARKETED BY:  
**Jack Blackmon**  
916.569.2372  
jack.blackmon@ngkf.com



# 1610 Arden Way, Sacramento, CA

## Point West Corporate Center

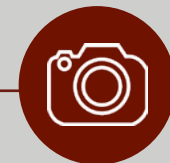
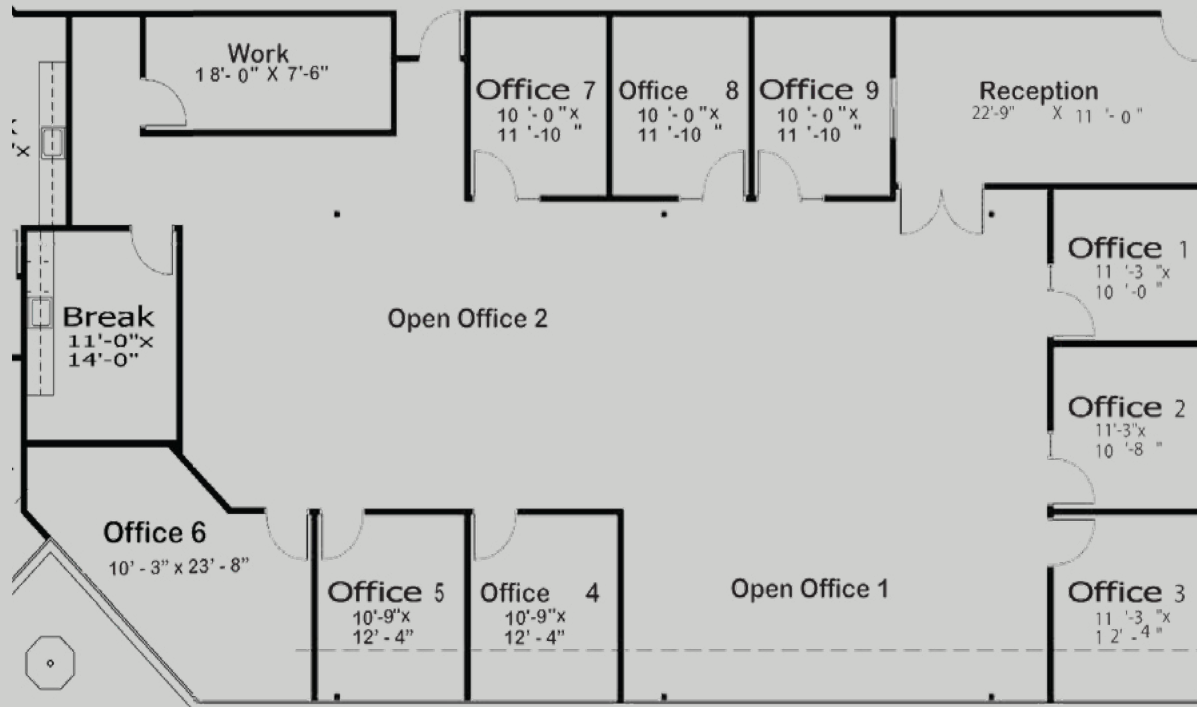
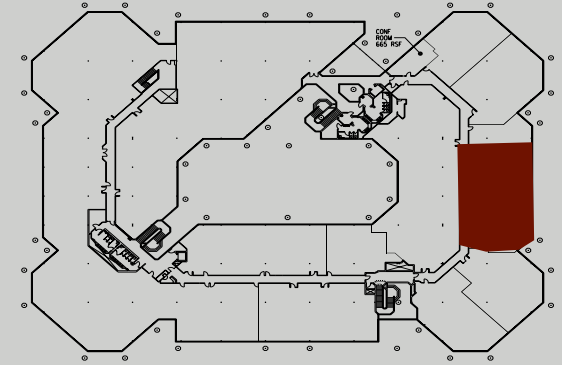


PointWestPortfolio.com

# 4,369 RSF

## SUITE 277

### SECOND FLOOR



**CLICK HERE  
FOR PHOTOS**

Suite 277



EXCLUSIVELY MARKETED BY:  
**Todd Eschelman**  
916.569.2347  
teschelman@ngkf.com

EXCLUSIVELY MARKETED BY:  
**Kirk Lange**  
916.569.2331  
klange@ngkf.com

EXCLUSIVELY MARKETED BY:  
**Jack Blackmon**  
916.569.2372  
jack.blackmon@ngkf.com

# 1610 Arden Way, Sacramento, CA Point West Corporate Center

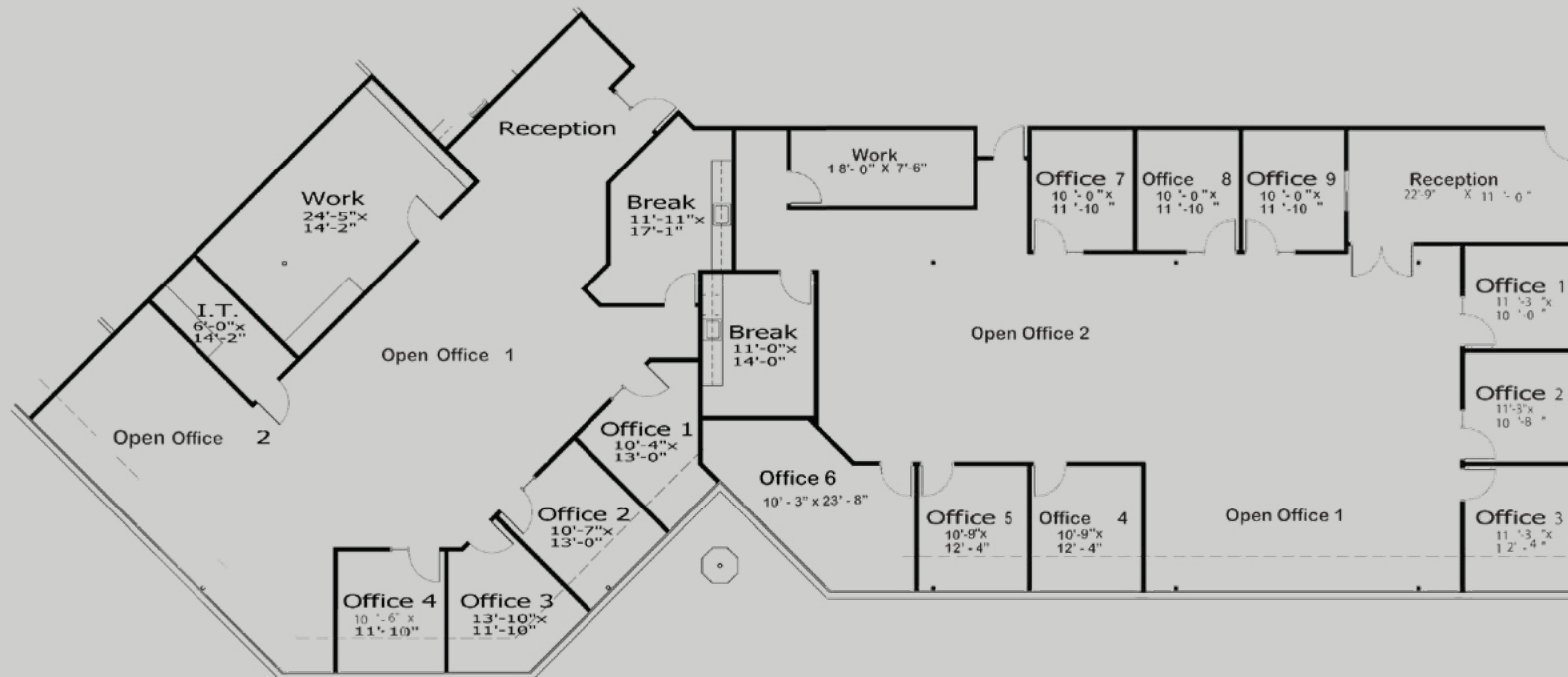
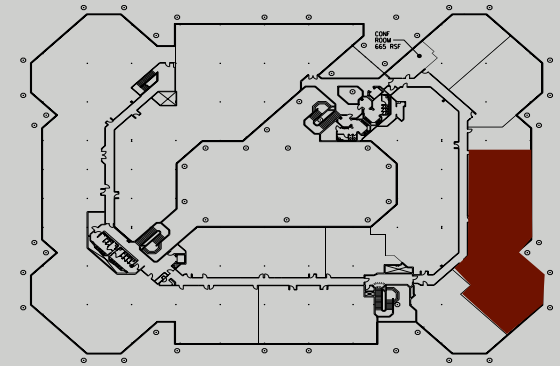


BASIN STREET  
PROPERTIES

PointWestPortfolio.com

## 7,662 RSF SUITE 275 & 277

### SECOND FLOOR



EXCLUSIVELY MARKETED BY:  
**Todd Eschelmann**  
916.569.2347  
teschelmann@ngkf.com

EXCLUSIVELY MARKETED BY:  
**Kirk Lange**  
916.569.2331  
klange@ngkf.com

EXCLUSIVELY MARKETED BY:  
**Jack Blackmon**  
916.569.2372  
jack.blackmon@ngkf.com