

# POINT WEST COMMERCE CENTRE

1545 RIVER PARK DRIVE, SACRAMENTO, CA



CLASS A OFFICES MINUTES  
FROM DOWNTOWN @ HWY 80  
& ARDEN FAIR MALL

**NEWMARK**



Exclusively Marketed By: \_\_\_\_\_

**Jack Blackmon**  
916.494.2349  
jack.blackmon@nmrk.com  
CA RE License #01999561

**Matthew Alemania**  
925.303.6299  
matthew.alemania@nmrk.com  
CA RE License #01958591

# POINT WEST COMMERCE CENTRE

1545 RIVER PARK DRIVE  
SACRAMENTO, CA

## PROPERTY HIGHLIGHTS



Onsite conference room



Fitness center with showers and lockers



Shaded decks and patios



4.5/1,000 parking



Short walk to Arden Fair Mall



Located within minutes of Sacramento's CBD



Direct access to the Capital City Freeway



Expansive and contiguous windowline



Prominent identity and freeway visibility



Café next door for breakfast and lunch



- Concierge Services for personal and professional assistance
- Moving concierge for data cabling, and moving facilitation
- Construction management team
- Building Engineers with advanced experience in building systems
- Professional Property Management services with local representatives

# POINT WEST COMMERCE CENTRE

1545 RIVER PARK DRIVE  
SACRAMENTO, CA

## FIVE-STORY CLASS A OFFICE BUILDING

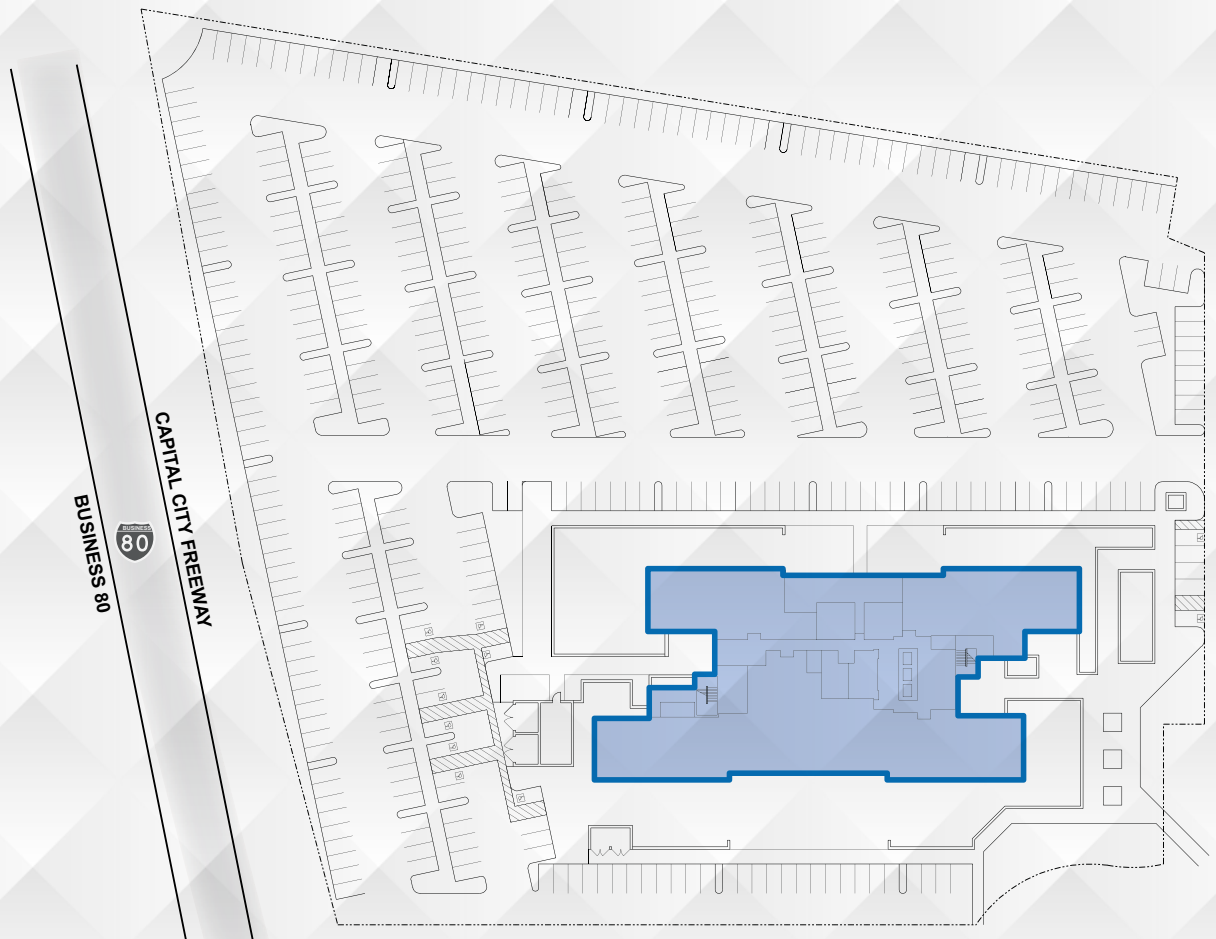


# POINT WEST COMMERCE CENTRE

1545 RIVER PARK DRIVE  
SACRAMENTO, CA



## SITE PLAN



# POINT WEST COMMERCE CENTRE

1545 RIVER PARK DRIVE  
SACRAMENTO, CA

## AMENITIES MAP

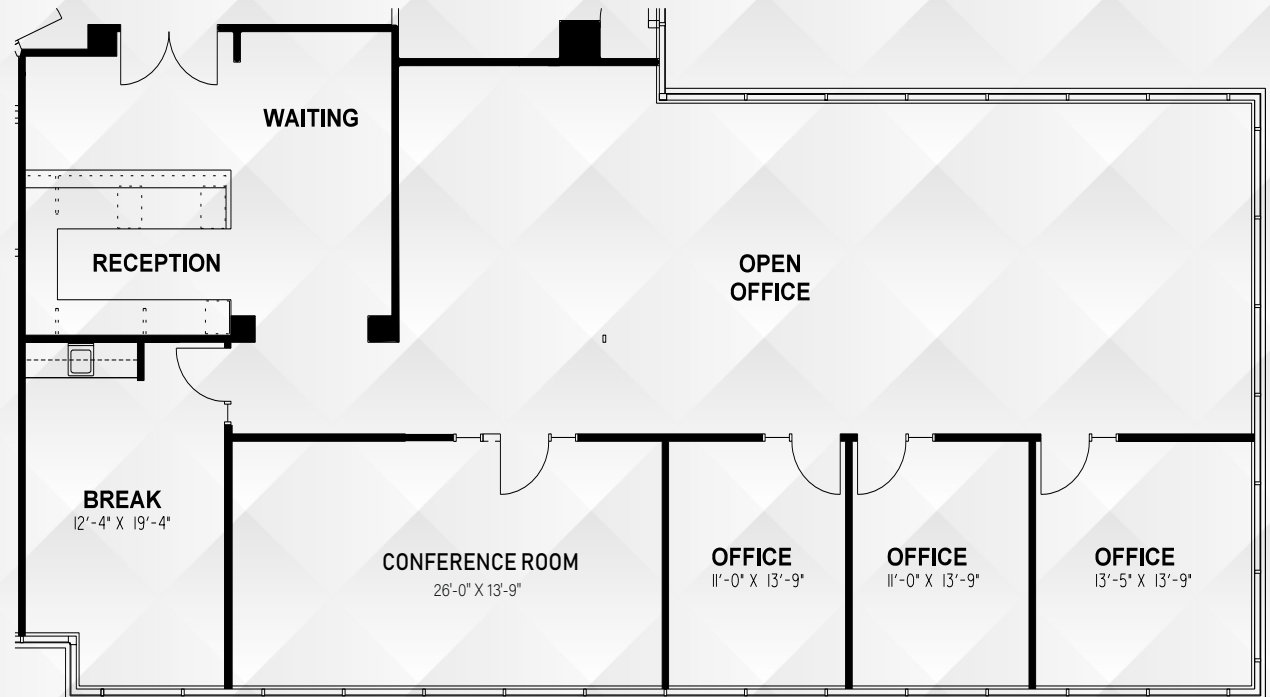
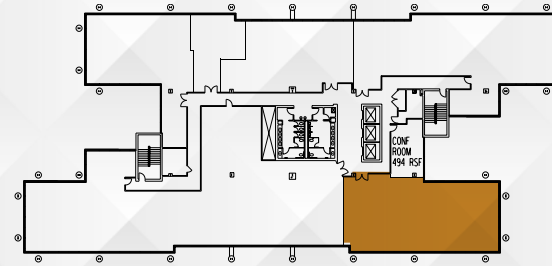


# POINT WEST COMMERCE CENTRE

1545 RIVER PARK DRIVE  
SACRAMENTO, CA



## FLOOR PLANS



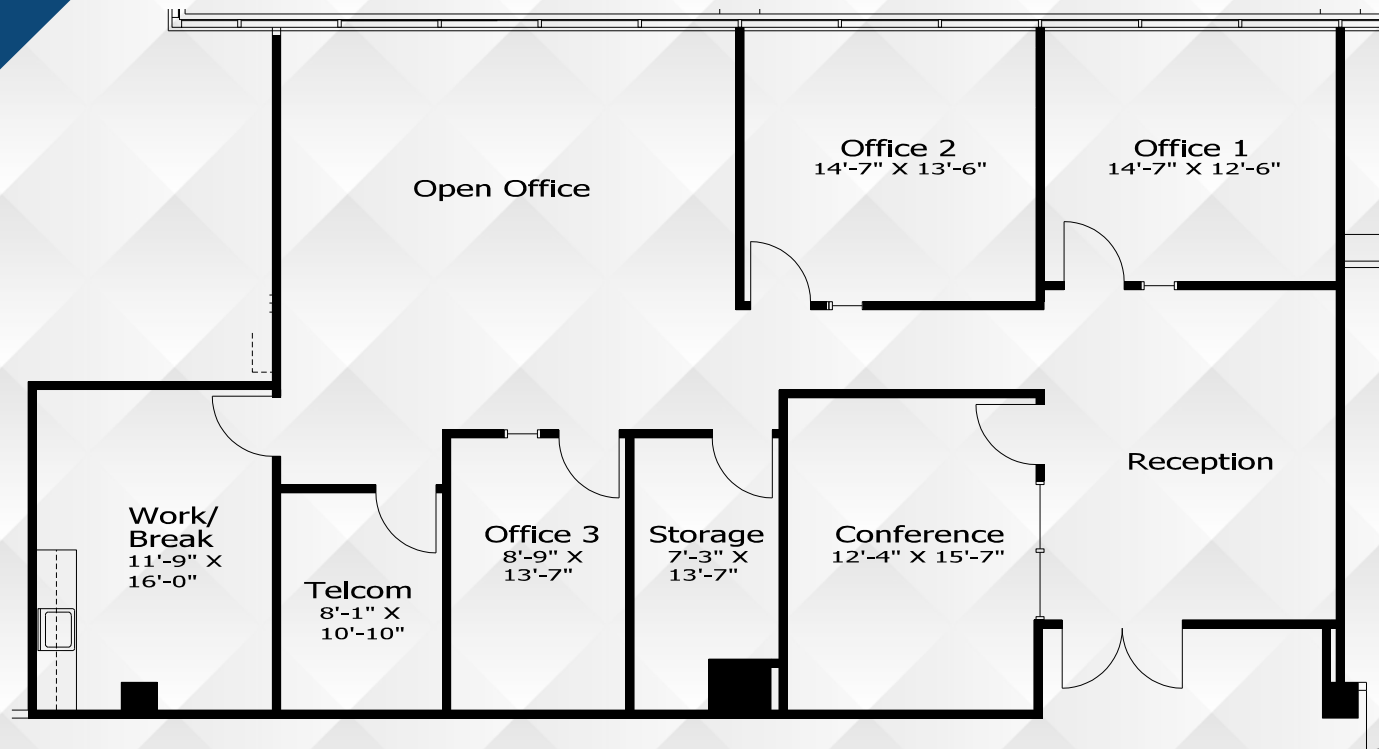
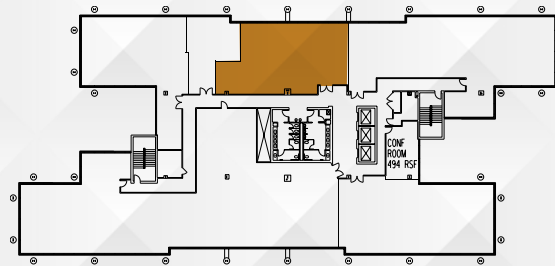
**SECOND FLOOR | 3,086 RSF | SUITE 200**

# POINT WEST COMMERCE CENTRE

1545 RIVER PARK DRIVE  
SACRAMENTO, CA



## FLOOR PLANS



**SECOND FLOOR | 2,313 RSF | SUITE 202**

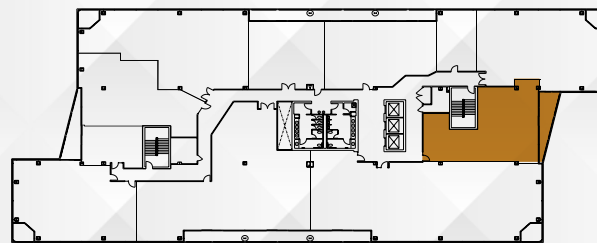


# POINT WEST COMMERCE CENTRE

1545 RIVER PARK DRIVE  
SACRAMENTO, CA



## FLOOR PLANS



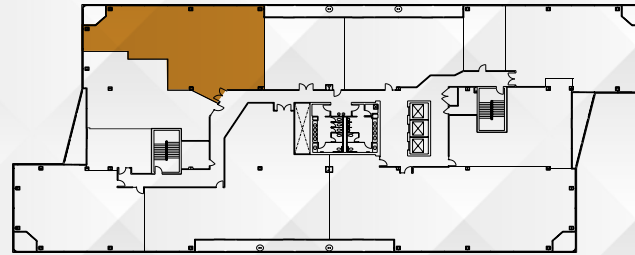
**FOURTH FLOOR | 1,966 RSF | SUITE 400**

# POINT WEST COMMERCE CENTRE

1545 RIVER PARK DRIVE  
SACRAMENTO, CA



## FLOOR PLANS



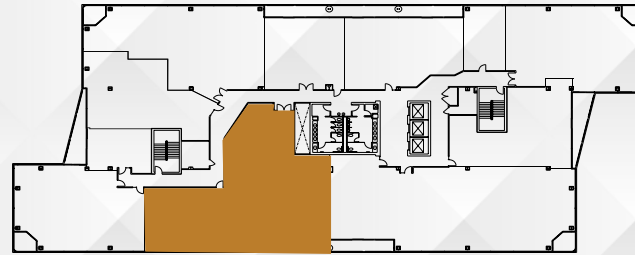
**FOURTH FLOOR | 3,045 RSF | SUITE 411**

# POINT WEST COMMERCE CENTRE

1545 RIVER PARK DRIVE  
SACRAMENTO, CA



## FLOOR PLANS



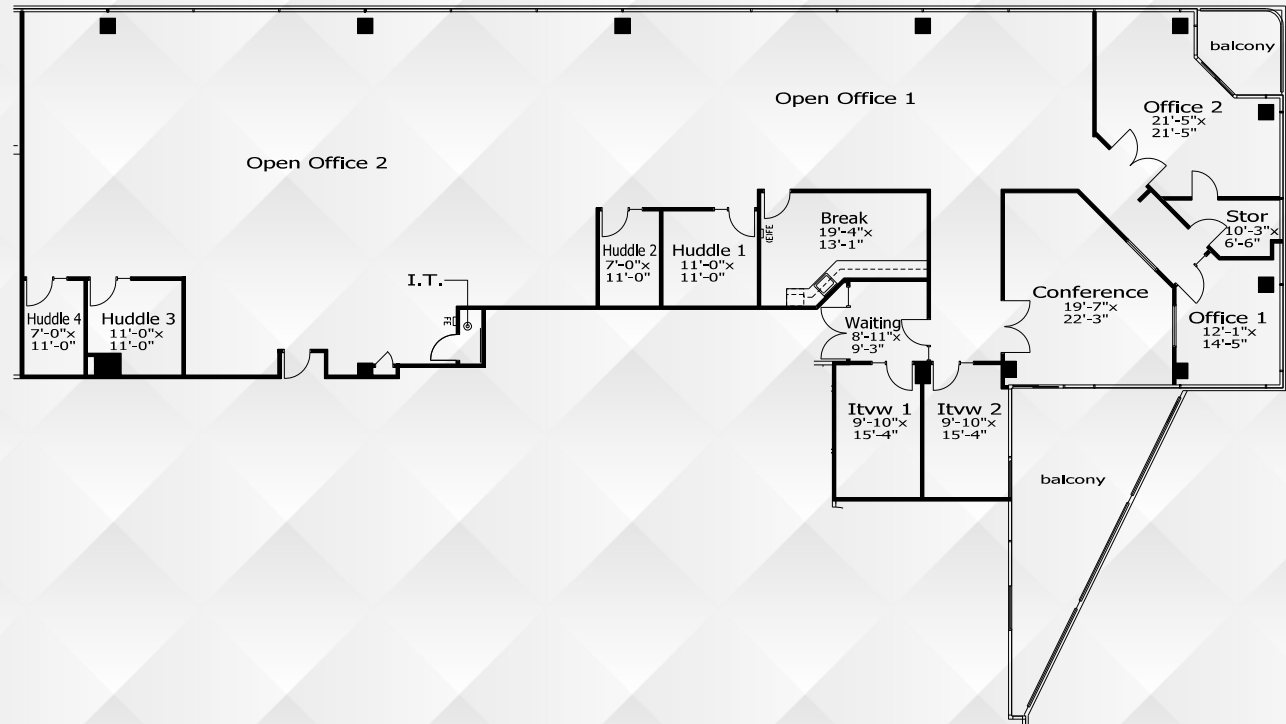
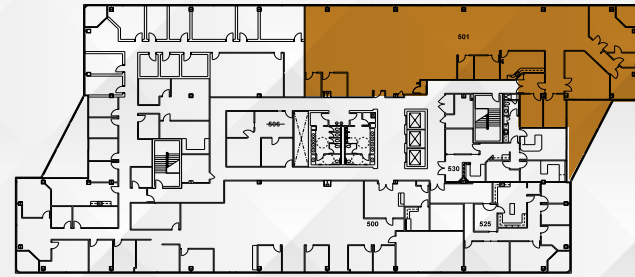
**FOURTH FLOOR | 2,938 RSF | SUITE 420**

# POINT WEST COMMERCE CENTRE

1545 RIVER PARK DRIVE  
SACRAMENTO, CA



## FLOOR PLANS



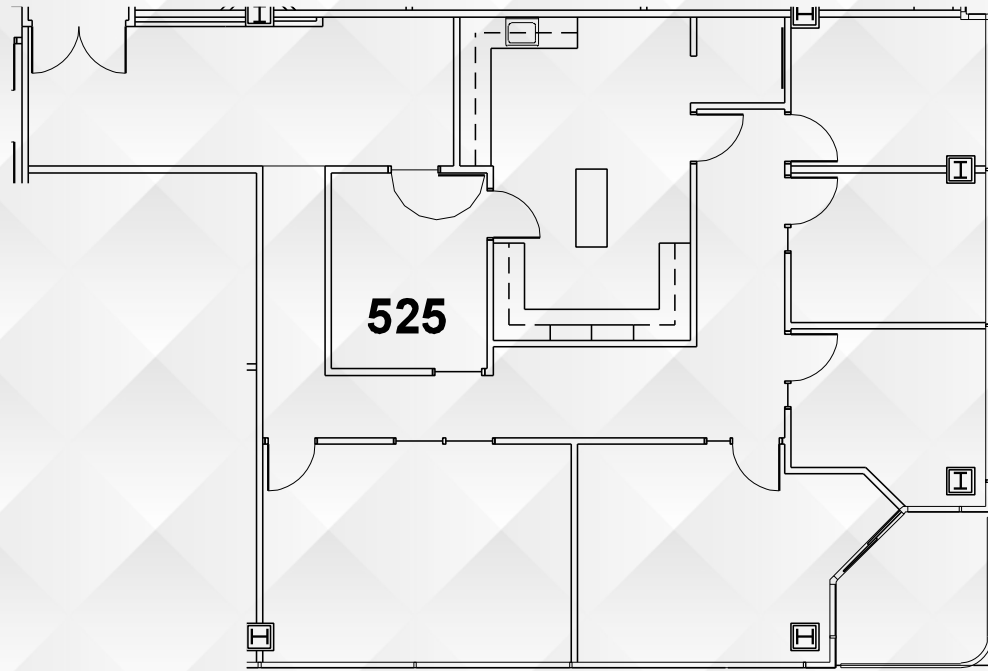
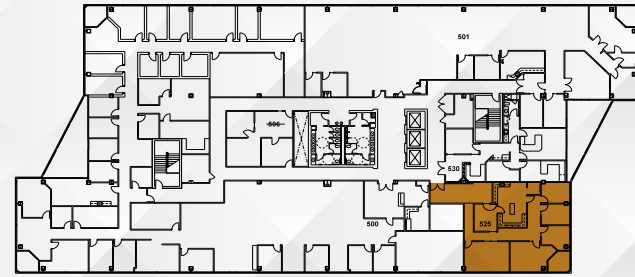
**FIFTH FLOOR | 7,090 RSF | SUITE 501**

# POINT WEST COMMERCE CENTRE

1545 RIVER PARK DRIVE  
SACRAMENTO, CA



## FLOOR PLANS



**FIFTH FLOOR | 2,319 RSF | SUITE 525**

# POINT WEST COMMERCE CENTRE

1545 RIVER PARK DRIVE, SACRAMENTO, CA



DISCLAIMER: The distributor of this communication is performing acts for which a real estate license is required. The information contained herein has been obtained from sources deemed reliable but has not been verified and no guarantee, warranty or representation, either express or implied, is made with respect to such information. Terms of sale or lease and availability are subject to change or withdrawal without notice. MP23-543 03-24

**NEWMARK**

  
**BASIN STREET**  
PROPERTIES

Exclusively Marketed By: \_\_\_\_\_

**Jack Blackmon**  
916.494.2349  
jack.blackmon@nmrk.com  
CA RE License #01999561

**Matthew Alemania**  
925.303.6299  
matthew.alemania@nmrk.com  
CA RE License #01958591