

FOR LEASE

Theatre Square Retail Space



ONE SPACE LEFT! ±2,126 SF Class "A" Retail Space | Petaluma, CA



FOR LEASE **Petaluma** Theatre Square Retail



151 Petaluma Blvd S. is located in the heart of downtown Petaluma's Theatre District, the region's premier downtown location, in the center of it all.

Type:

Retail

Address:

151 Petaluma Blvd S.
Petaluma, CA

Sol Food and Adobe Creek Brewery are now open!

www.theatre-district.com

DESCRIPTION

- Prompt decision-making & uncomplicated negotiations by local, reputable owner
- Class 'A' building with high-quality finishes throughout
- Abundant and convenient parking nearby
- Operable windows
- Annual average daily traffic count at D Street & 1st Street is approximately 21,960 cars



FOR LEASE | Theatre Square Retail 151 Petaluma Blvd S. | Petaluma, CA



©2024 Jones Lang LaSalle IP, Inc. All rights reserved. All information contained herein is from sources deemed reliable; however, no representation or warranty is made to the accuracy thereof.



Tony Sarno
tony.sarno@jll.com
707.217.7196
RE License# 01430933

Laura Duffy
laura.duffy@jll.com
415.686.0255
RE License# 01922792

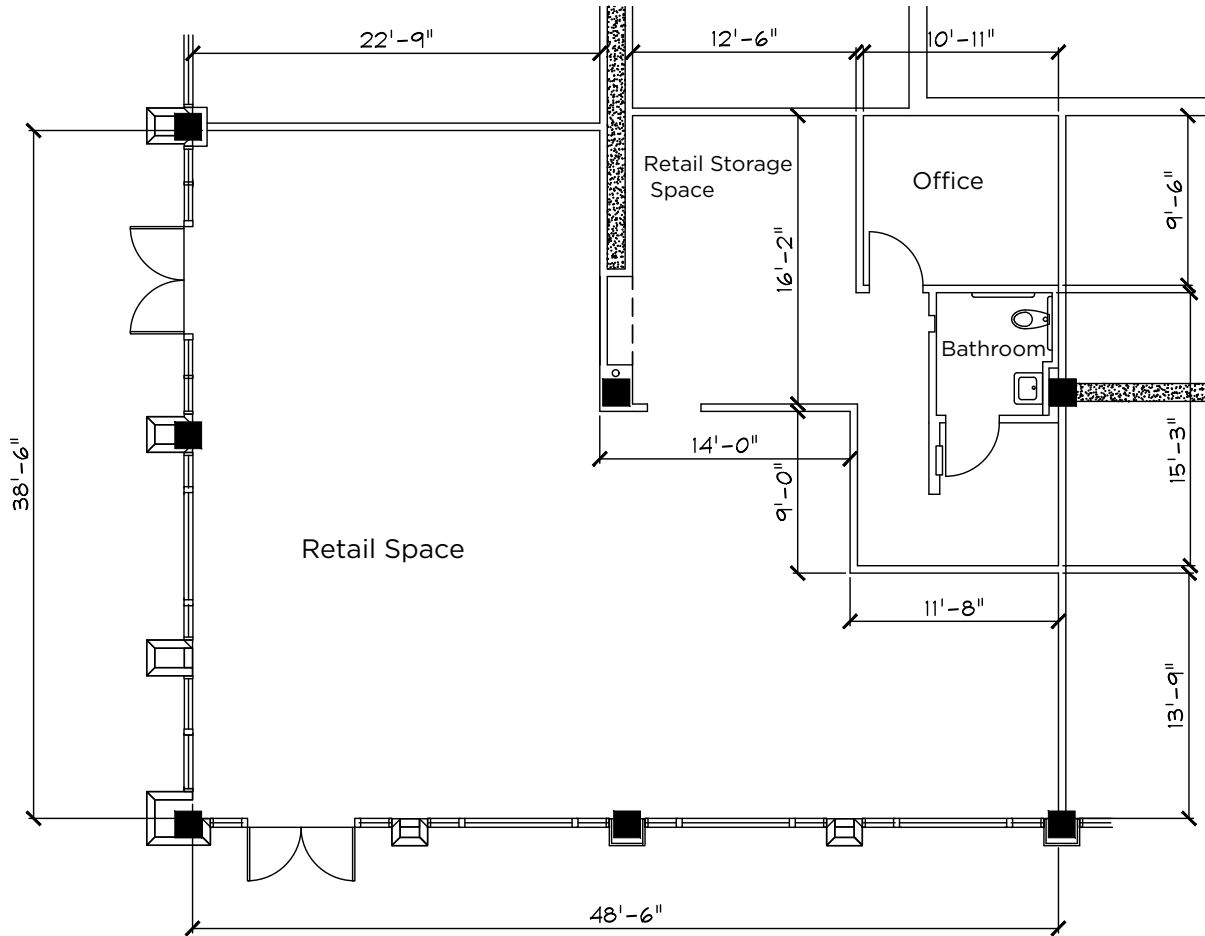
Jordan Lazor
jordan.lazor@jll.com
415.595.5102
RE License# 02011117

FOR LEASE | Theatre Square Retail 151 Petaluma Blvd S. | Petaluma, CA



Suite 107 - ±2,126 SF

\$1.60 psf/mo, NNN (nets currently \$0.93)



Tony Sarno
tony.sarno@jll.com
707.217.7196
RE License# 01430933

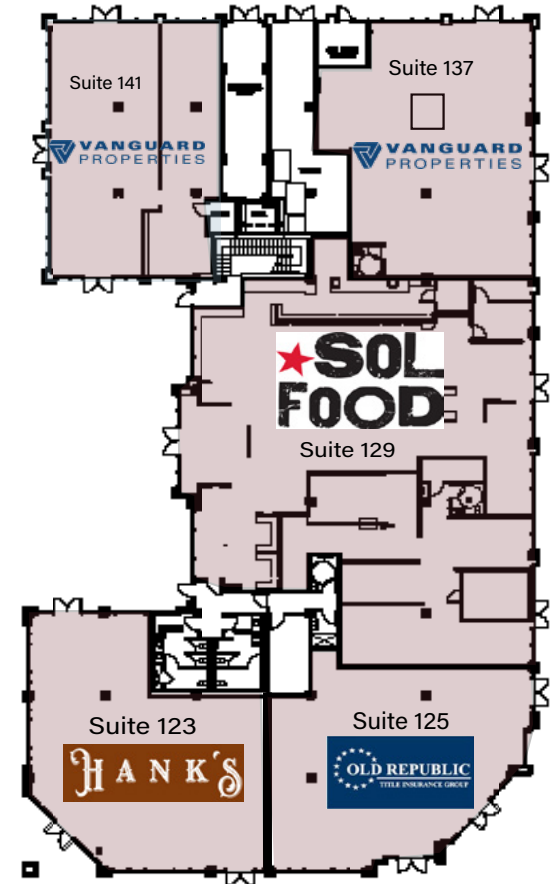
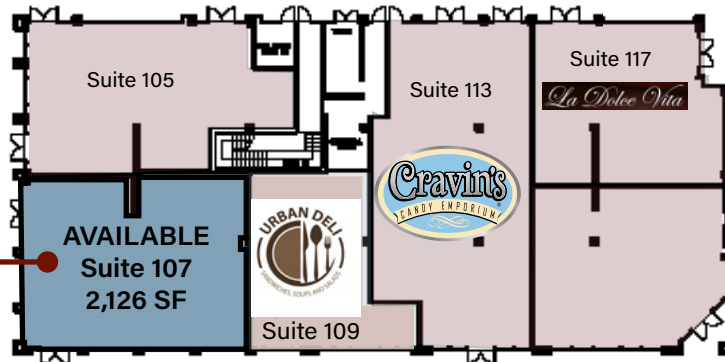
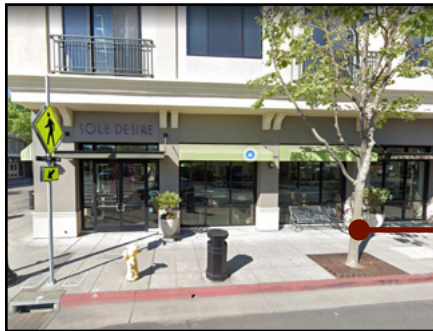
Laura Duffy
laura.duffy@jll.com
415.686.0255
RE License# 01922792

Jordan Lazor
jordan.lazor@jll.com
415.595.5102
RE License# 02011117

Although information has been obtained from sources deemed reliable, neither Owner nor JLL makes any guarantees, warranties or representations, express or implied, as to the completeness or accuracy as to the information contained herein. Any projections, opinions, assumptions or estimates used are for example only. There may be differences between projected and actual results, and those differences may be material. The Property may be withdrawn without notice. Neither Owner nor JLL accepts any liability for any loss or damage suffered by any party resulting from reliance on this information. If the recipient of this information has signed a confidentiality agreement regarding this matter, this information is subject to the terms of that agreement. ©2024. Jones Lang LaSalle IP, Inc. All rights reserved.

FOR LEASE | Theatre Square Retail 151 Petaluma Blvd S. | Petaluma, CA

Retail - First Floor



**PRIME CORNER RETAIL
LOCATION AT THEATRE SQUARE**

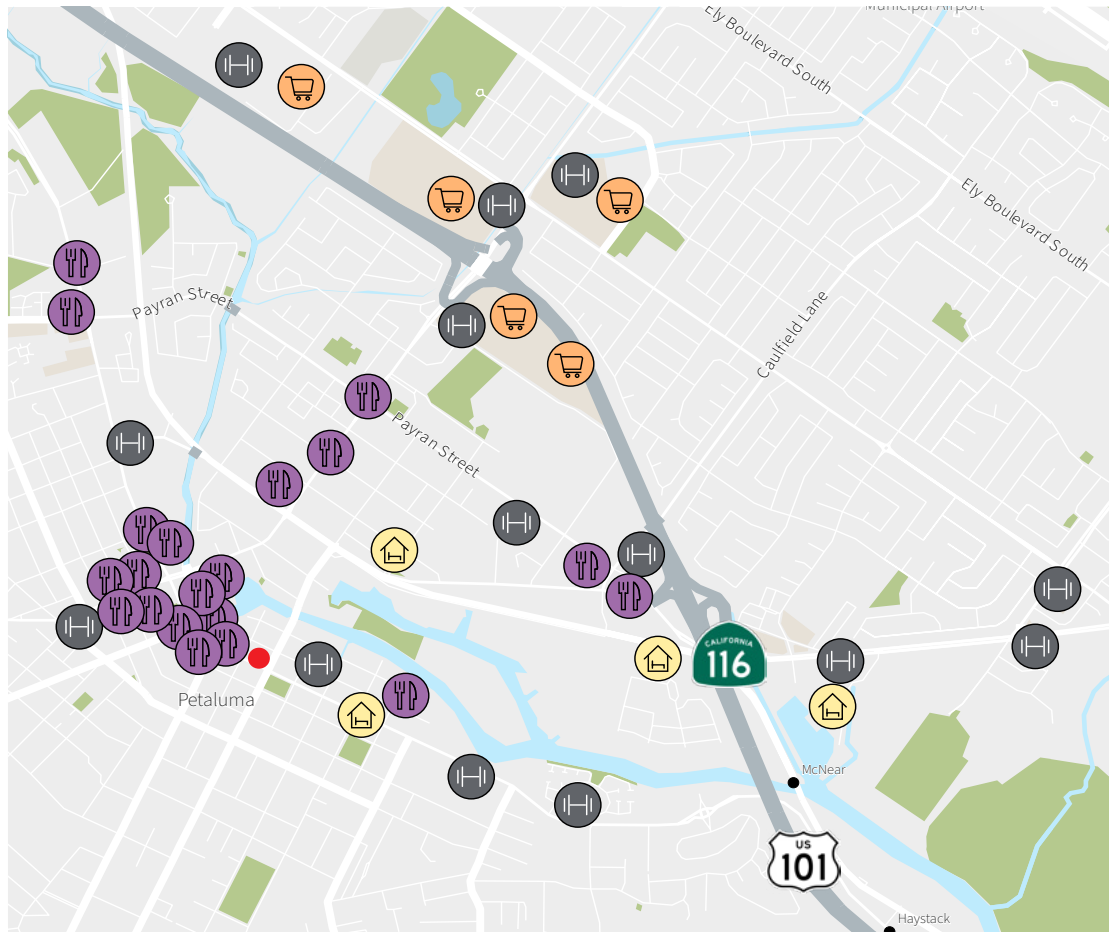
LEGEND

- OCCUPIED
- VACANT

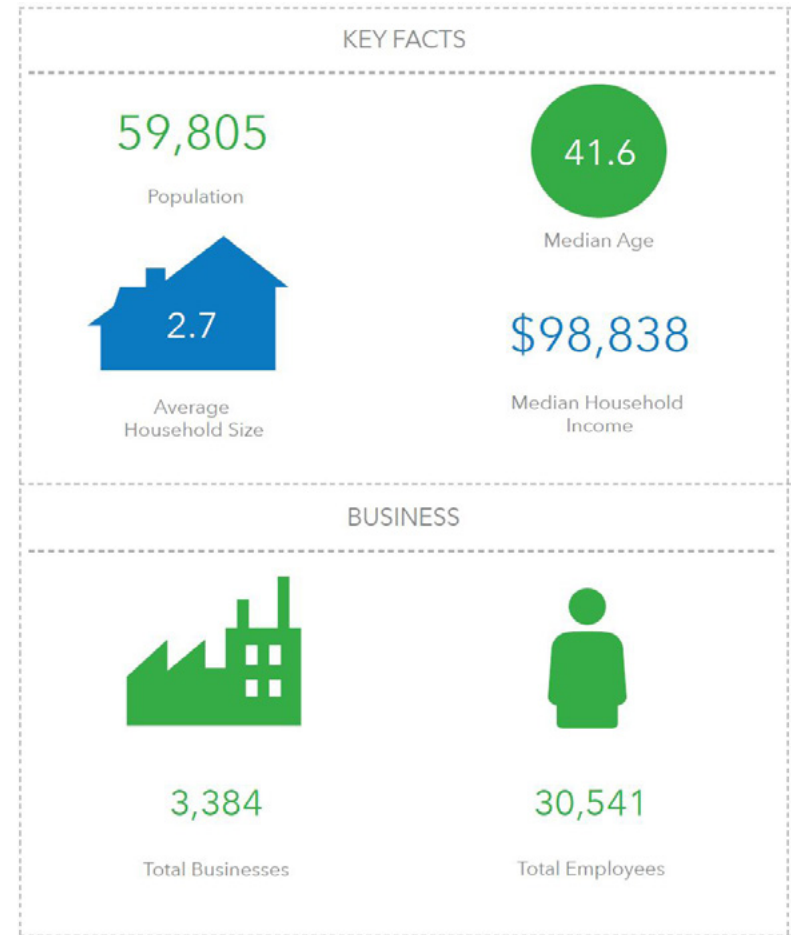
FOR LEASE **Petaluma**



Abundant Retail Amenities:



Healthy Petaluma Demographics:



In the heart of charming Petaluma you will find the region's premier open-air dining and retail destination venue featuring local downtown shopping, savory eateries and entertainment everyday of the year.

Situated along the historic and scenic Petaluma River, visitors can shop, dine, and play the day away at this mixed-use lifestyle center.

www.theatre-district.com



Tony Sarno
tony.sarno@jll.com
707.217.7196
RE License# 01430933

Laura Duffy
laura.duffy@jll.com
415.686.0255
RE License# 01922792

Jordan Lazor
jordan.lazor@jll.com
415.595.5102
RE License# 02011117