

Folsom's Premier Office Building

2365 Iron Point Road

High Visibility Freeway Location



EXCLUSIVELY MARKETING BY:

Todd Eschelman

916.569.2347

teschelman@ngkf.com

CA RE License #01051148

Jack Blackmon

916.569.2372

jack.blackmon@ngkf.com

CA RE License #01999561



BASIN STREET
PROPERTIES

Folsom's Premier Office Building



Units from 1,479 SF - 11,158 SF

- Walking distance to numerous amenities
- LEED Gold
- 4.5/1,000 parking ratio
- Fiber ready
- Onsite gym with showers
- Freeway visible signage (roughly 200,000 vehicles per day)
- Designated walking paths surround wetlands/preserve area
- Updated lobby with television and furniture



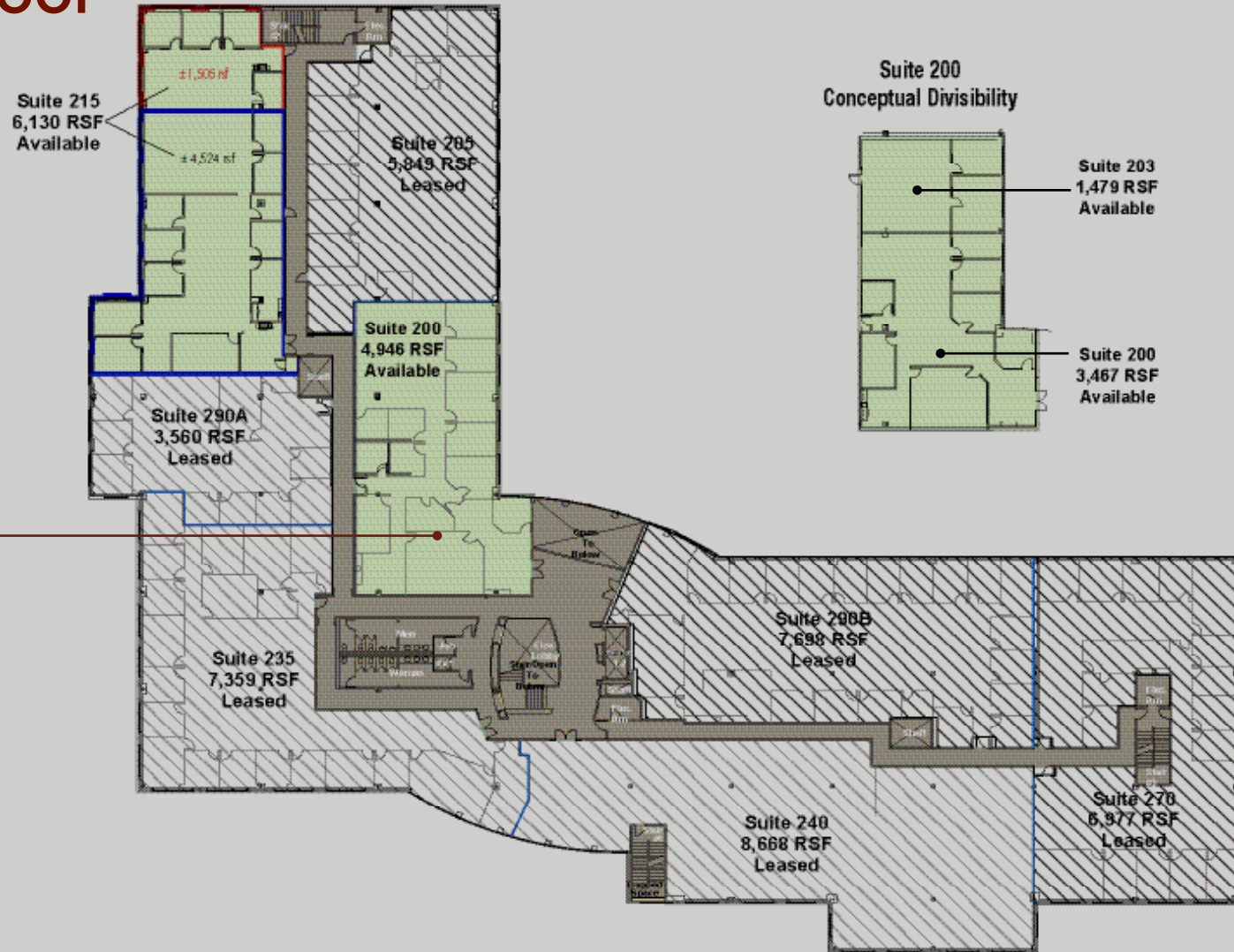
**CLICK HERE
FOR PHOTOS**
COMMON AREA

2365 Iron Point Road

Folsom's Premier Office Building



Second Floor



**CLICK HERE
FOR PHOTOS**

Suite 200

Third Floor



**CLICK HERE
FOR PHOTOS**

Suite 350

2365 Iron Point Road

Amenities Aerial

