

FOR LEASE

Theatre Square Office Space



Vibrant, Class "A" Office Spaces Available For Lease | Petaluma, CA





140 Second Street is located in the heart of downtown Petaluma's Theatre District, the region's premier downtown location, in the center of it all.

Type:
Office

Address:
140 Second Street
Petaluma, CA

Sol Food and Adobe Creek Brewery are now open!

www.theatre-district.com

DESCRIPTION

- Prompt decision-making & uncomplicated negotiations by local, reputable owner
- Class 'A' building with high-quality finishes throughout
- Abundant and convenient parking nearby
- Men's and women's shower/lockers for office tenants
- Operable windows
- Annual average daily traffic count at D Street & 1st Street is approximately 21,960



Tony Sarno
tony.sarno@jll.com
707.217.7196
RE License# 01430933

Laura Duffy
laura.duffy@jll.com
415.686.0255
RE License# 01922792

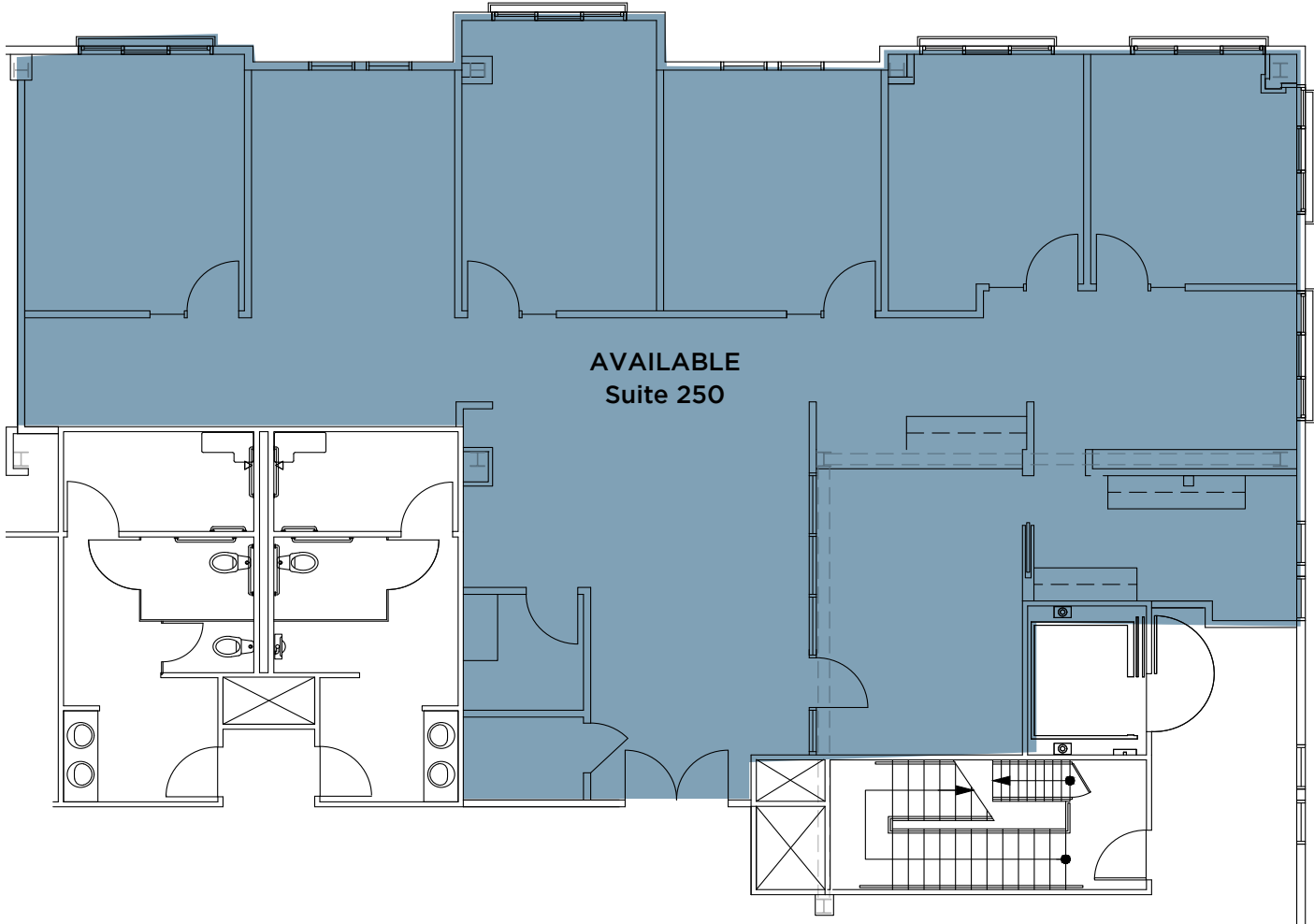
Jordan Lazor
jordan.lazor@jll.com
415.595.5102
RE License# 02011117

Jones Lang LaSalle Brokerage, Inc.
Real Estate License # 01856260

FOR LEASE | Theatre Square Office
140 Second Street | Petaluma, CA



Suite 250: ±2,956 SF
\$2.40 psf/mo, FSG



Tony Sarno
tony.sarno@jll.com
707.217.7196
RE License# 01430933

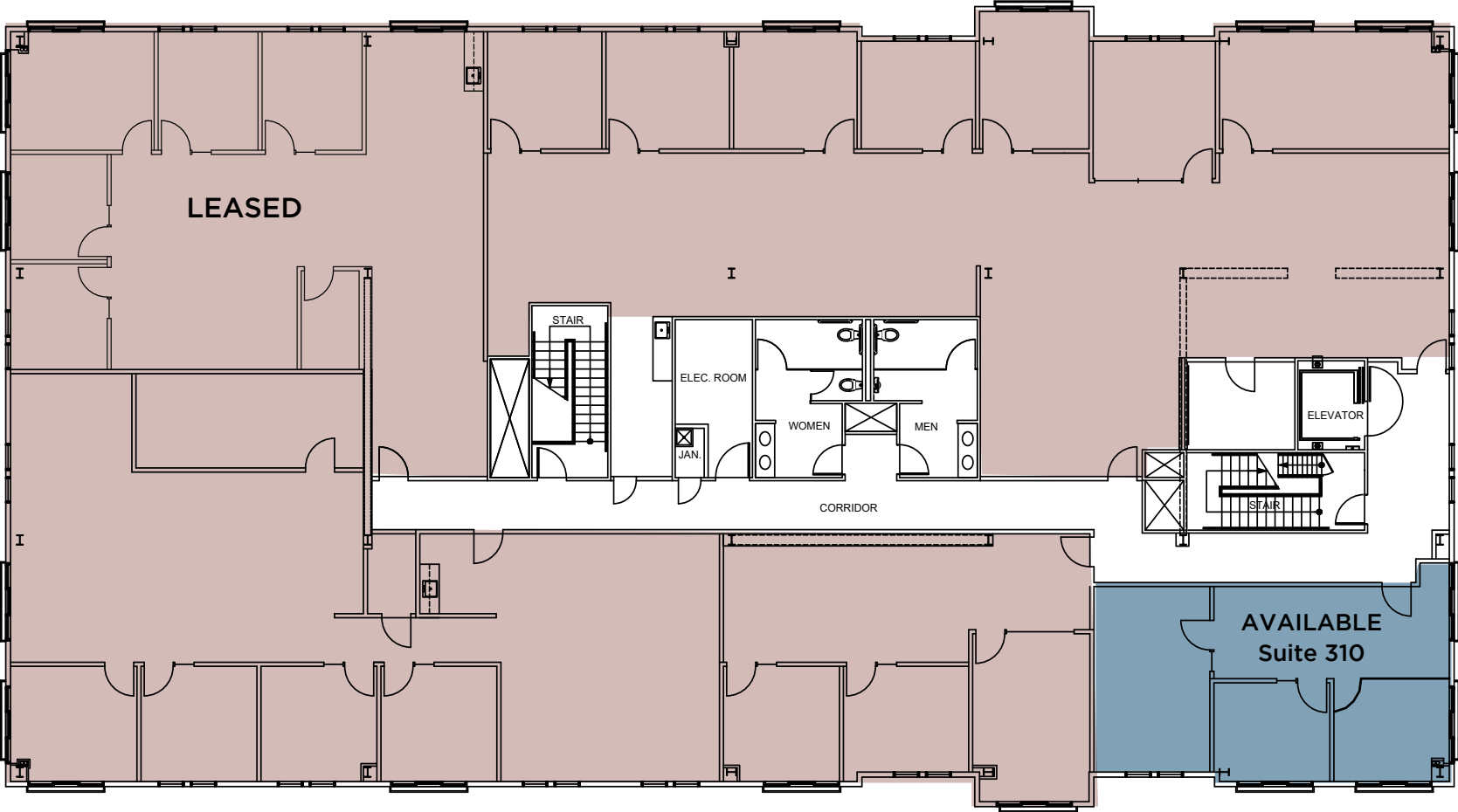
Laura Duffy
laura.duffy@jll.com
415.686.0255
RE License# 01922792

Jordan Lazor
jordan.lazor@jll.com
415.595.5102
RE License# 02011117

FOR LEASE | Theatre Square Office 140 Second Street | Petaluma, CA



Suite 310: ±883 SF
\$2.40 psf/mo, FSG



Tony Sarno
tony.sarno@jll.com
707.217.7196
RE License# 01430933

Laura Duffy
laura.duffy@jll.com
415.686.0255
RE License# 01922792

Jordan Lazor
jordan.lazor@jll.com
415.595.5102
RE License# 02011117

FOR LEASE | Theatre Square Office 140 Second Street | Petaluma, CA



©2024 Jones Lang LaSalle IP, Inc. All rights reserved. All information contained herein is from sources deemed reliable; however, no representation or warranty is made to the accuracy thereof.



Tony Sarno
tony.sarno@jll.com
707.217.7196
RE License# 01430933

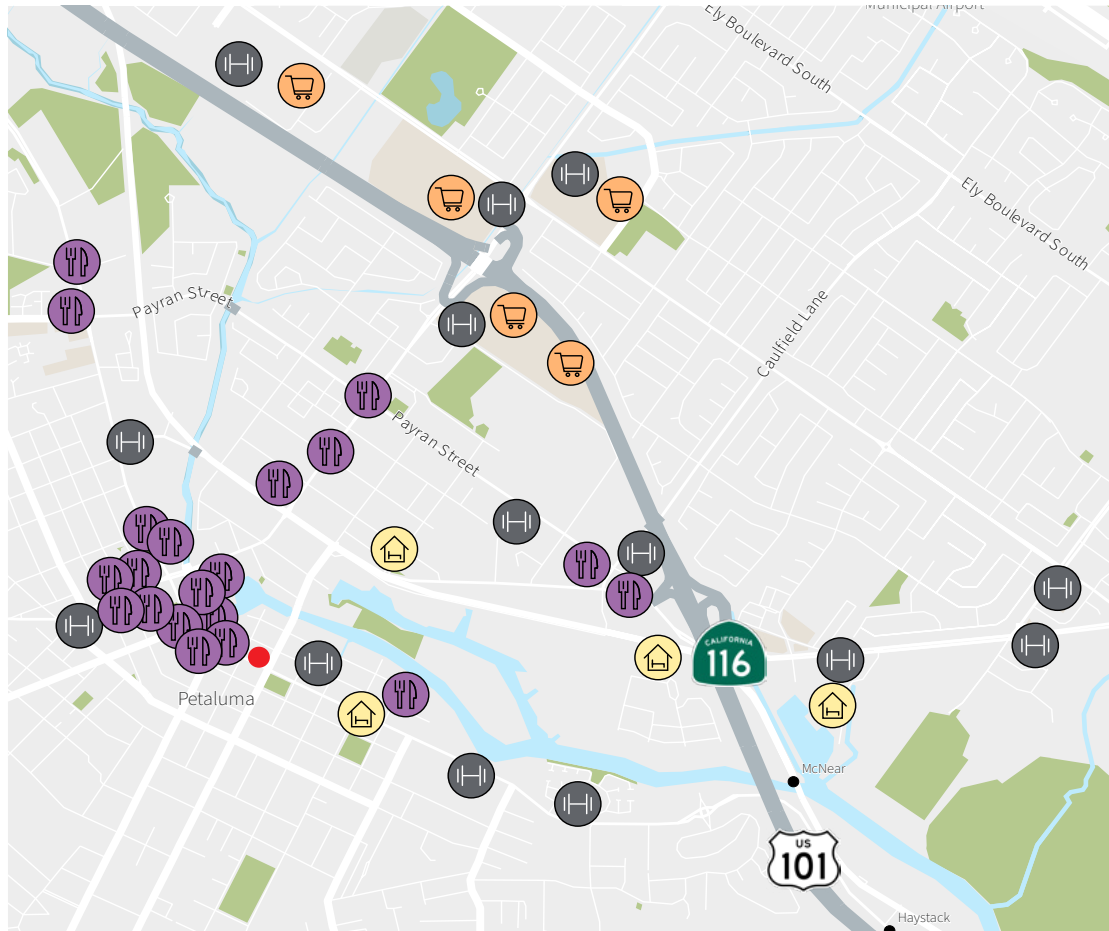
Laura Duffy
laura.duffy@jll.com
415.686.0255
RE License# 01922792

Jordan Lazor
jordan.lazor@jll.com
415.595.5102
RE License# 02011117

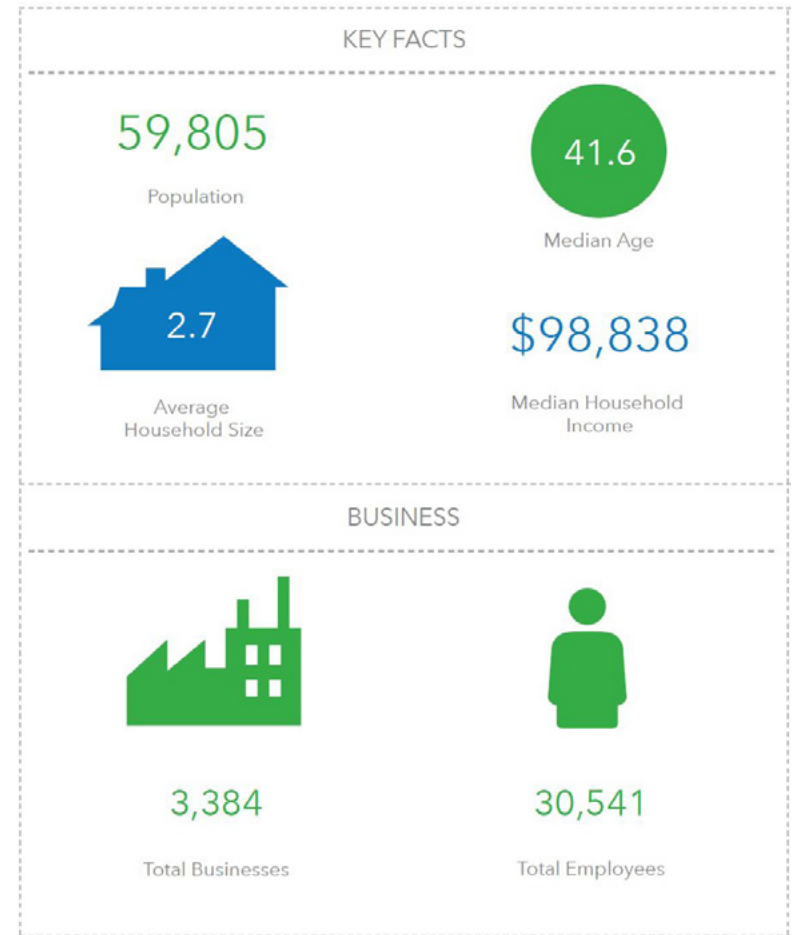
FOR LEASE **Petaluma**



Abundant Retail Amenities:



Healthy Petaluma Demographics:



In the heart of charming Petaluma you will find the region's premier open-air dining and retail destination venue featuring local downtown shopping, savory eateries and entertainment everyday of the year.

Situated along the historic and scenic Petaluma River, visitors can shop, dine, and play the day away at this mixed-use lifestyle center.

www.theatre-district.com



Tony Sarno
tony.sarno@jll.com
707.217.7196
RE License# 01430933

Laura Duffy
laura.duffy@jll.com
415.686.0255
RE License# 01922792

Jordan Lazor
jordan.lazor@jll.com
415.595.5102
RE License# 02011117