

FOR LEASE

Theatre Square Office & Retail



140 SECOND

UPGRADE YOUR SEAT TENANT LEASING INCENTIVE

*Sign a lease for 1,500+ SF and
we will rent out a Petaluma Blvd
14 Theatre for you and your team**

**For all qualified deals signed by 9/30/2023.*

****TOUR INCENTIVE: TAKE A TOUR AND IT'S DRINKS
AND A MOVIE FOR TWO ON US**

*** Tour incentive expires 9/30/2023. Two rounds of drinks provided at one
of our Theatre District restaurants and a movie at Petaluma Boulevard 14.*

Vibrant, Class "A" Office & Retail Spaces For Lease | Petaluma, CA



FOR LEASE **Petaluma** Theatre Square Office & Retail



101 2nd Street is located in the heart of downtown Petaluma's Theatre District, the region's premier downtown location, in the center of it all.

Type:
Office & Retail

Address:
140 Second Street
Petaluma, CA

Sol Food and Adobe Creek Brewery are now open!

www.theatre-district.com

DESCRIPTION

- Prompt decision-making & uncomplicated negotiations by local, reputable owner
- Class 'A' building with high-quality finishes throughout
- Abundant and convenient parking nearby
- Men's and women's shower/lockers for office tenants
- Operable windows
- Annual average daily traffic count at D Street & 1st Street is approximately 18,371



EXCLUSIVELY MARKETING BY THE DOWLING-BRACCO TEAM OF JLL | 707.421.2900

Tony Sarno
tony.sarno@jll.com
707.217.7196
RE License# 01430933

Jordan Lazor
jordan.lazor@jll.com
415.595.5102
RE License# 0201117

Laura Duffy
laura.duffy@jll.com
415.686.0255
RE License# 01922792

Glen Dowling
glen.dowling@jll.com
707.227.7800
RE License# 0890450

Jones Lang LaSalle Brokerage, Inc.
Real Estate License # 01856260

FOR LEASE **Petaluma** Theatre Square Office & Retail



©2023 Jones Lang LaSalle IP, Inc. All rights reserved. All information contained herein is from sources deemed reliable; however, no representation or warranty is made to the accuracy thereof.



EXCLUSIVELY MARKETING BY THE DOWLING-BRACCO TEAM OF JLL | 707.421.2900

Tony Sarno

tony.sarno@jll.com
707.217.7196
RE License# 01430933

Jordan Lazor

jordan.lazor@jll.com
415.595.5102
RE License# 0201117

Laura Duffy

laura.duffy@jll.com
415.686.0255
RE License# 01922792

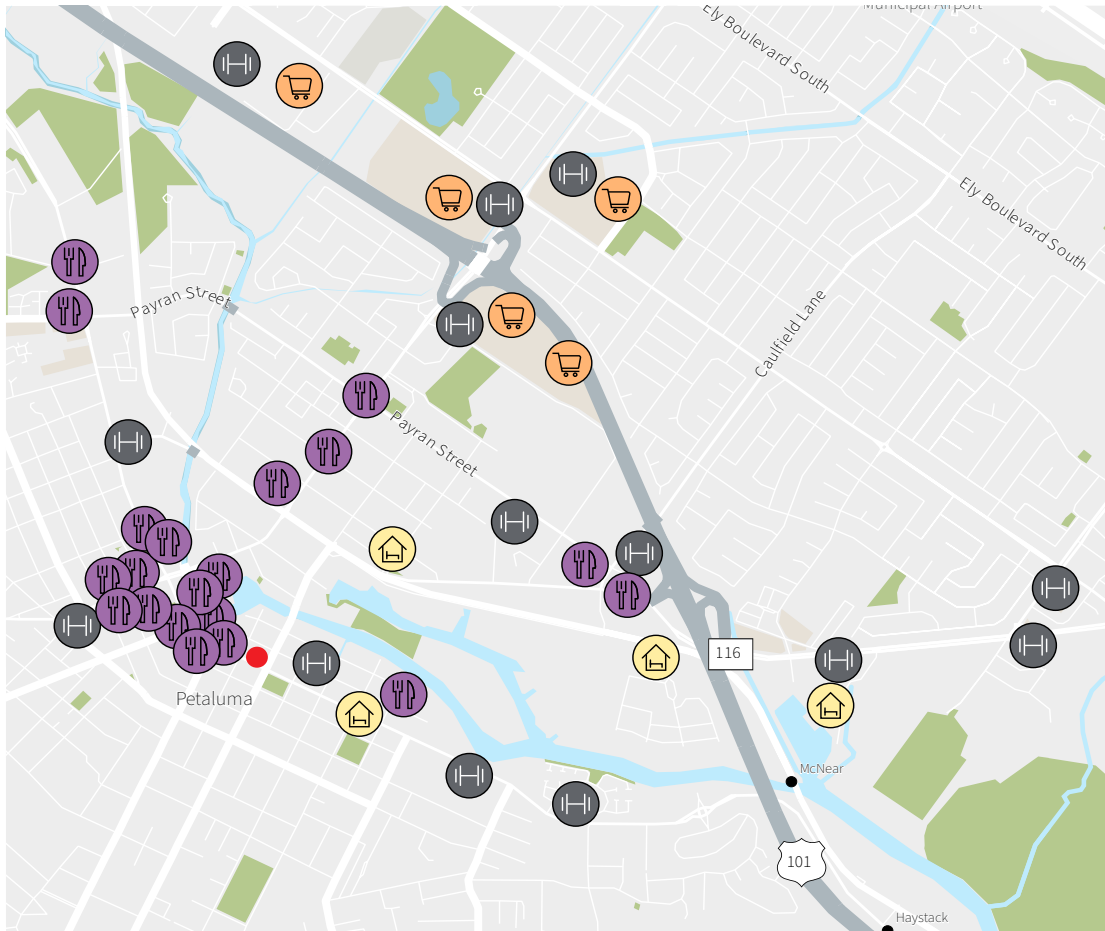
Glen Dowling

glen.dowling@jll.com
707.227.7800
RE License# 0890450

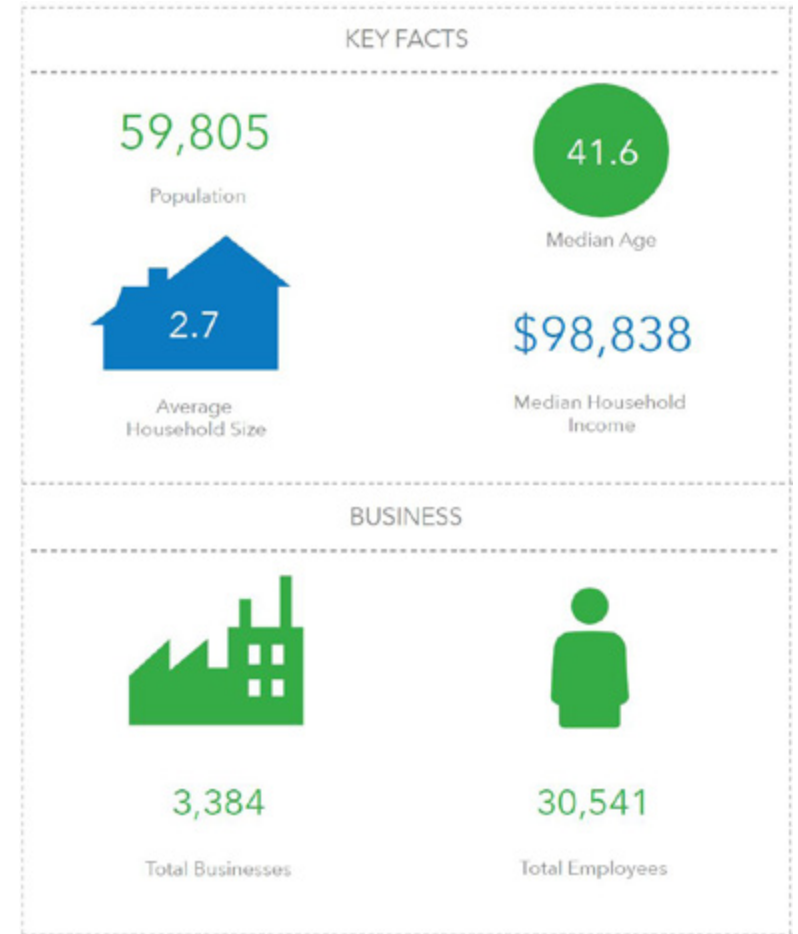
FOR LEASE **Petaluma**



Abundant Retail Amenities:



Healthy Petaluma Demographics:



In the heart of charming Petaluma you will find the region's premier open-air dining and retail destination venue featuring local downtown shopping, savory eateries and entertainment everyday of the year.

Situated along the historic and scenic Petaluma River, visitors can shop, dine, and play the day away at this mixed-use lifestyle center.

www.theatre-district.com



EXCLUSIVELY MARKETING BY THE DOWLING-BRACCO TEAM OF JLL | 707.421.2900

Tony Sarno
tony.sarno@jll.com
707.217.7196
RE License# 01430933

Jordan Lazor
jordan.lazor@jll.com
415.595.5102
RE License# 0201117

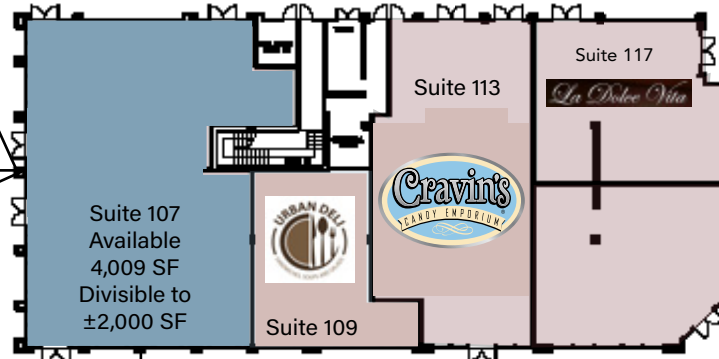
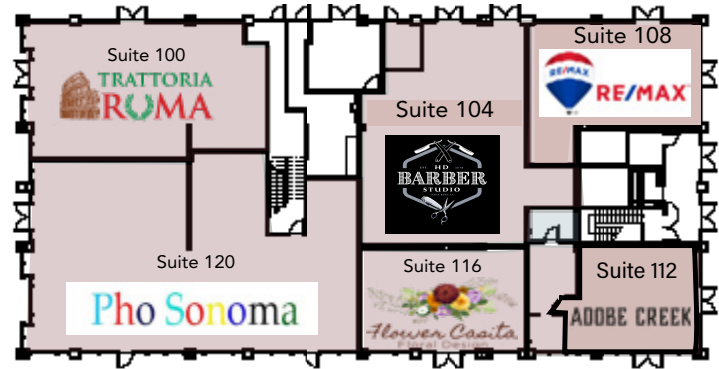
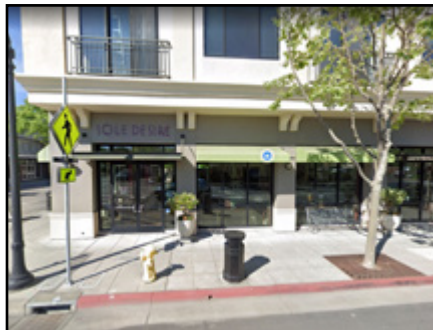
Laura Duffy
laura.duffy@jll.com
415.686.0255
RE License# 01922792

Glen Dowling
glen.dowling@jll.com
707.227.7800
RE License# 0890450

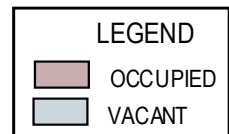
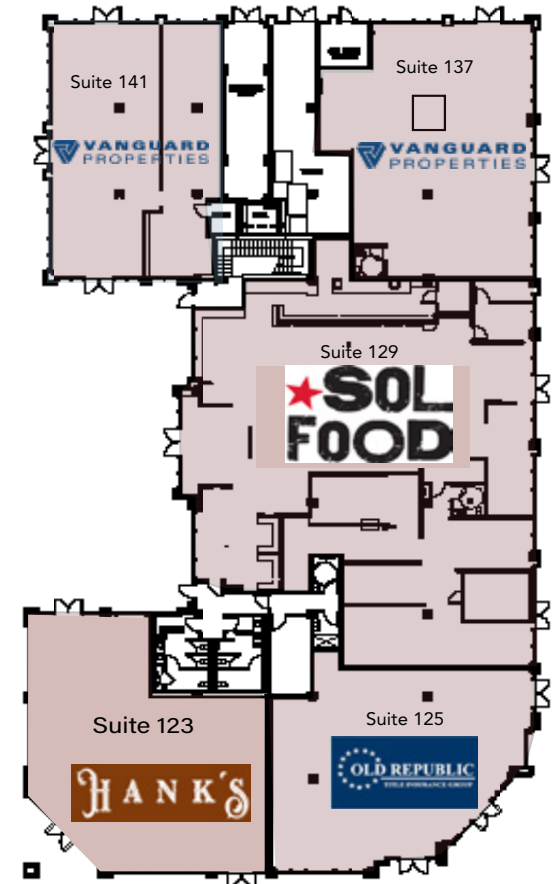
FOR LEASE | Theatre Square Office & Retail 140 Second Street | Petaluma, CA



Retail - First Floor



**PRIME CORNER
RETAIL LOCATION
AT THE THEATRE
SQUARE**



EXCLUSIVELY MARKETING BY THE DOWLING-BRACCO TEAM OF JLL | 707.421.2900



Tony Sarno
tony.sarno@jll.com
707.217.7196
RE License# 01430933

Jordan Lazor
jordan.lazor@jll.com
415.595.5102
RE License# 0201117

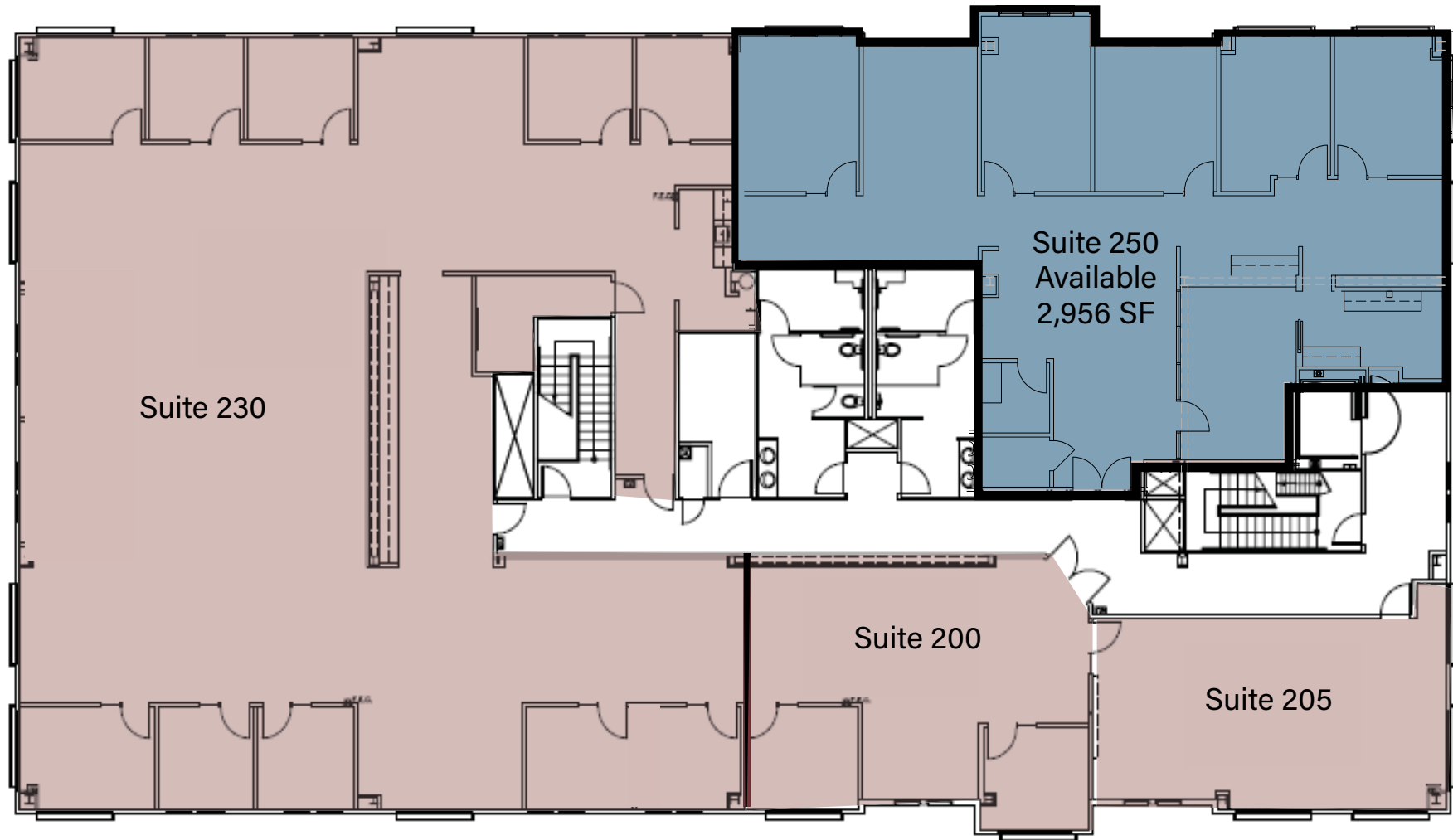
Laura Duffy
laura.duffy@jll.com
415.686.0255
RE License# 01922792

Glen Dowling
glen.dowling@jll.com
707.227.7800
RE License# 0890450

FOR LEASE | Theatre Square Office & Retail
140 Second Street | Petaluma, CA



Office
Second Floor



EXCLUSIVELY MARKETING BY THE DOWLING-BRACCO TEAM OF JLL | 707.421.2900

Tony Sarno
tony.sarno@jll.com
707.217.7196
RE License# 01430933

Jordan Lazor
jordan.lazor@jll.com
415.595.5102
RE License# 0201117

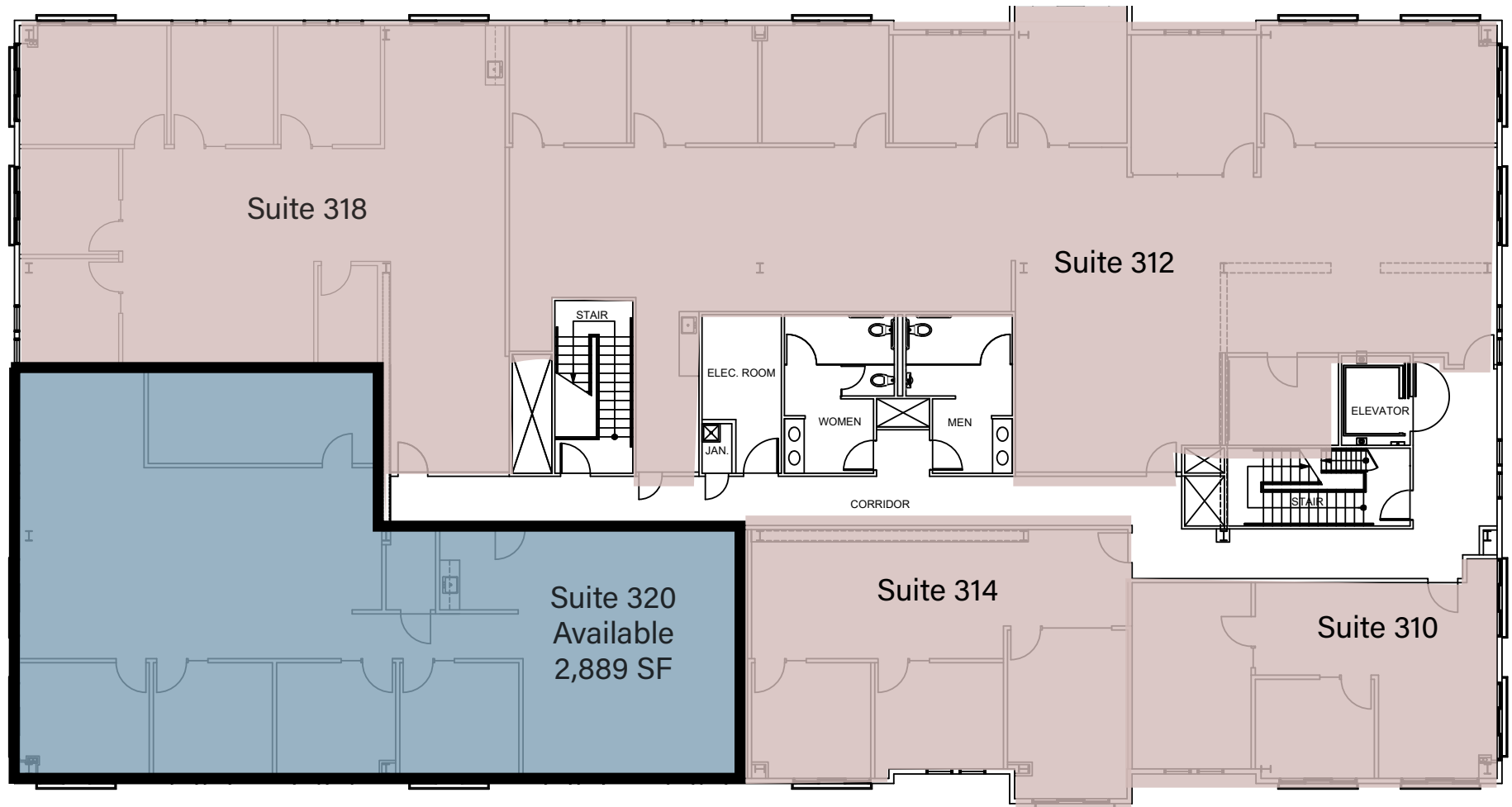
Laura Duffy
laura.duffy@jll.com
415.686.0255
RE License# 01922792

Glen Dowling
glen.dowling@jll.com
707.227.7800
RE License# 0890450

FOR LEASE | Theatre Square Office & Retail
140 Second Street | Petaluma, CA



Office
Third Floor



EXCLUSIVELY MARKETING BY THE DOWLING-BRACCO TEAM OF JLL | 707.421.2900

Tony Sarno

tony.sarno@jll.com

707.217.7196

RE License# 01430933

Jordan Lazor

jordan.lazor@jll.com

415.595.5102

RE License# 0201117

Laura Duffy

laura.duffy@jll.com

415.686.0255

RE License# 01922792

Glen Dowling

glen.dowling@jll.com

707.227.7800

RE License# 0890450