

FOR LEASE **Santa Rosa**

# 131 Stony Circle



3,011+/- SF Available for Lease



# FOR LEASE **Santa Rosa** **131 Stony Circle**



Strategic Location in  
the Stony Point Area of  
Santa Rosa

Office space available  
3,011 SF

Type:  
**Office**

Address:  
**131 Stony Circle**  
**Santa Rosa, CA**

# of Floors  
**Two Buildings:**  
**1 Story**

## **DESCRIPTION**

Two single-story buildings provide a professional and spacious atmosphere with high quality finishes, welcoming glass lines, and efficient design. The buildings reside in a parklike setting with easy access to Highway 12 and Highway 101. Open floorplans provide flexible layouts and ease of occupancy. Basin Street Properties is the onsite property management company providing prompt and capable support. 5:1,000 parking provides plenty of spaces, even for medical uses. The buildings offer direct access to the individual suites from the parking lots.

## **AMENITIES**

- Assortment of floor plans and square footages
- Move-in ready suites available
- Outdoor BBQ, picnic area and a beautiful lake
- Free ample parking for your employees and clients
- Park like setting with meandering pathways
- Many amenities and business services within walking distance
- Close proximity to Downtown Santa Rosa
- Prompt decision-making and uncomplicated negotiations by local, reputable owner

## **KEY TENANTS**

Sutter Healthy, Stony Point Executive Offices, Community Child Care Council, and Kerosky Purves & Bogue



EXCLUSIVELY MARKETED BY:  
**Shawn Johnson**  
DRE#: 00835502

**Peter Briceño**  
DRE#: 01885655

FOR LEASE **Santa Rosa**  
**131 Stony Circle**

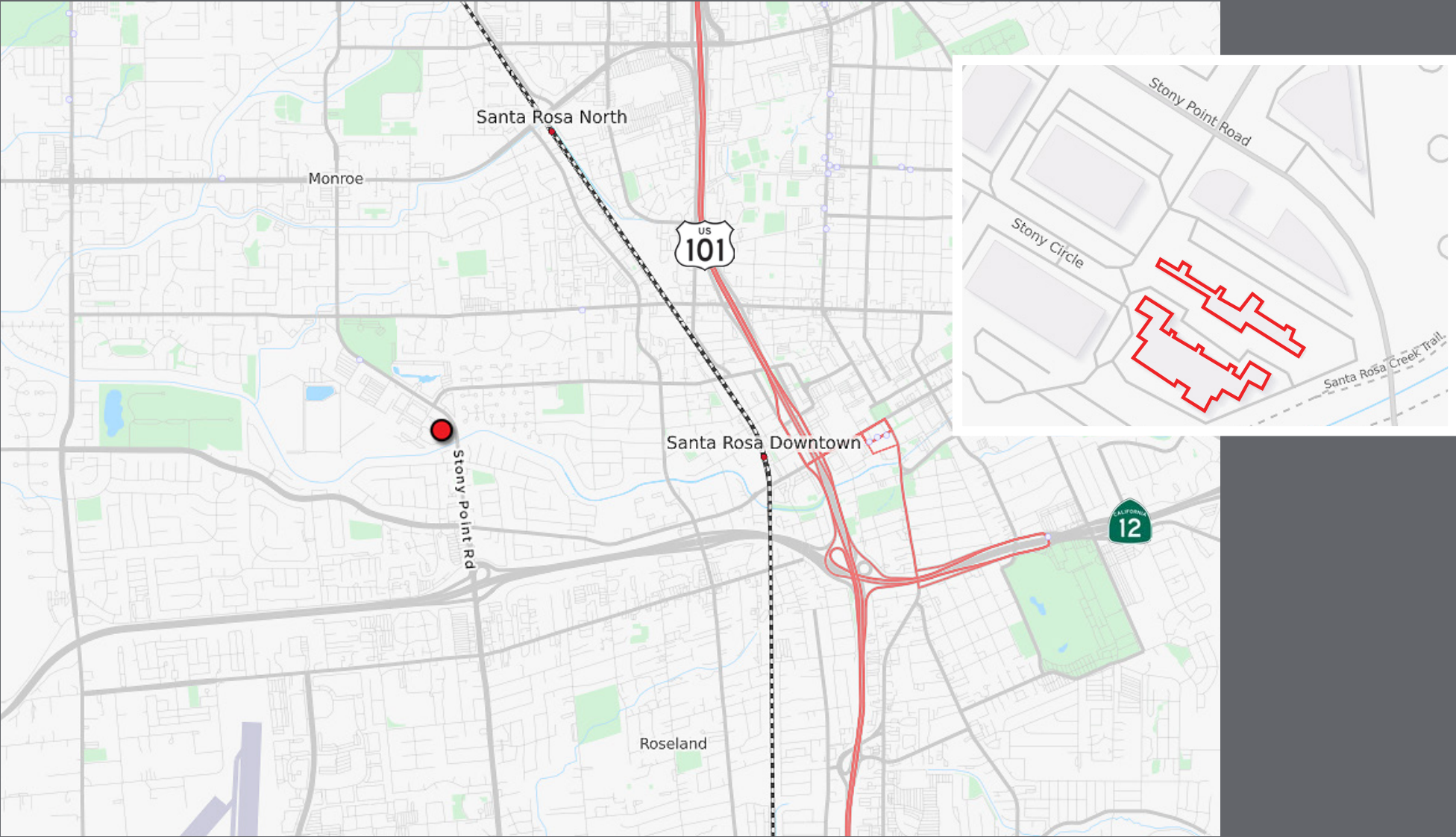


EXCLUSIVELY MARKETED BY:  
**Shawn Johnson**  
DRE#: 00835502

**Peter Briceño**  
DRE#: 01885655

FOR LEASE **Santa Rosa**  
**131 Stony Circle**

Located in Santa Rosa's premier Stony Point office park, with immediate proximity to Highways 101 and 12, public transportation, and amenities.



EXCLUSIVELY MARKETING BY:

**Shawn Johnson**  
DRE#: 00835502

**Peter Briceño**  
DRE#: 01885655

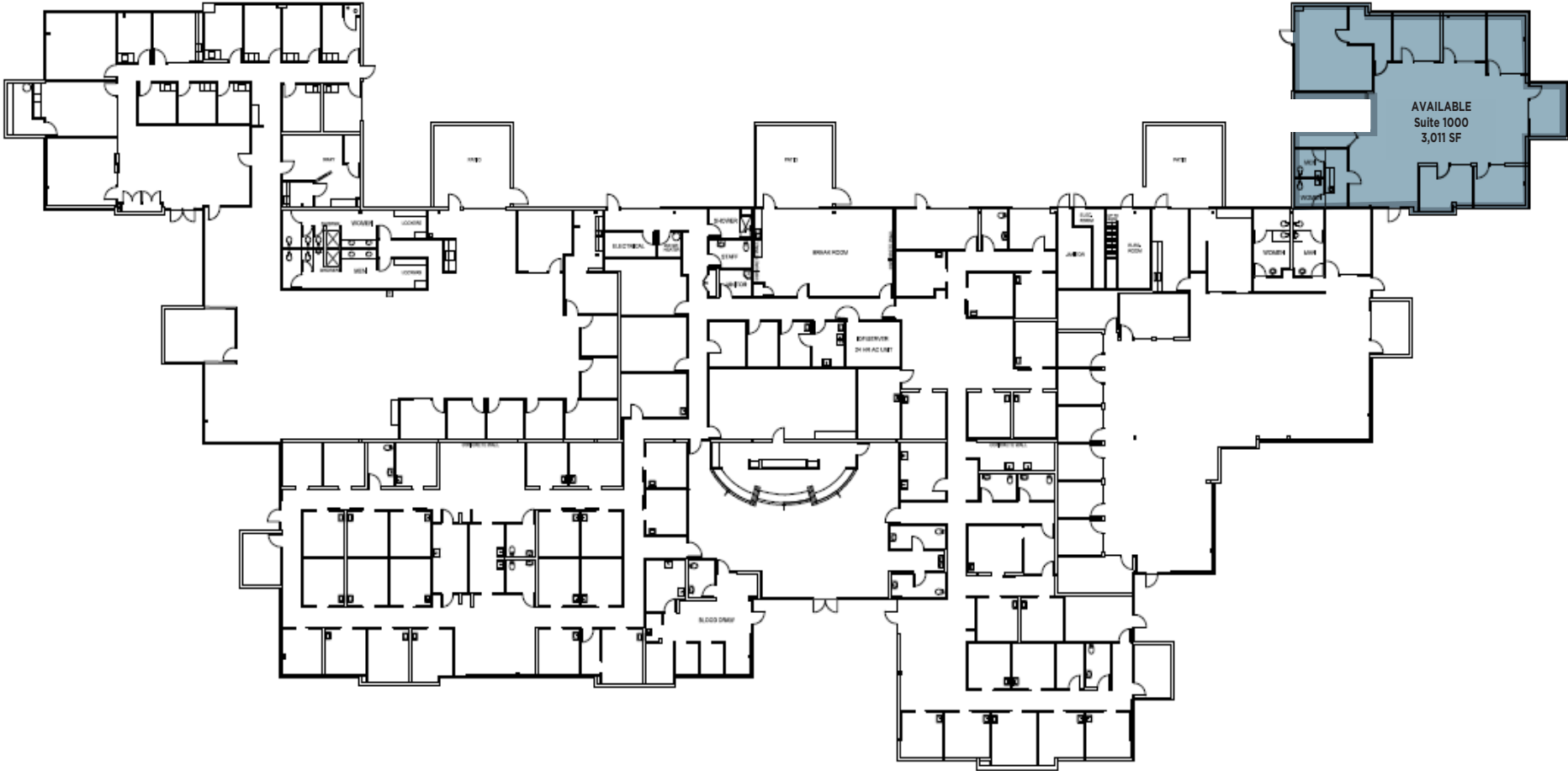
FOR LEASE **Santa Rosa**  
**131 Stony Circle - Building A**



**3,011 RSF**

- Suite 1000

131 Stony Circle  
Building B



EXCLUSIVELY MARKETED BY:  
**Shawn Johnson**  
DRE#: 00835502

**Peter Briceño**  
DRE#: 01885655

# FOR LEASE Santa Rosa 131 Stony Circle - Site Plan



EXCLUSIVELY MARKETED BY:  
**Shawn Johnson**  
DRE#: 00835502

**Peter Briceño**  
DRE#: 01885655