

# WORLD CLASS WATERFRONT WORK ENVIRONMENT

## SHORELINE OFFICE CENTER SOUTHERN MARIN LIFESTYLE

*Visit us at [thriveatshoreline.com](http://thriveatshoreline.com)*



**100 SHORELINE HIGHWAY | MILL VALLEY | CA**

**FOR LEASE ±760 RSF TO ±4,322 RSF  
\$4.95 TO \$5.45/RSF, FULL SERVICE**

**NEWMARK**

**HADEN ONGARO**  
415.526.7649  
[haden.ongaro@nrmk.com](mailto:haden.ongaro@nrmk.com)  
CA DRE #00916960

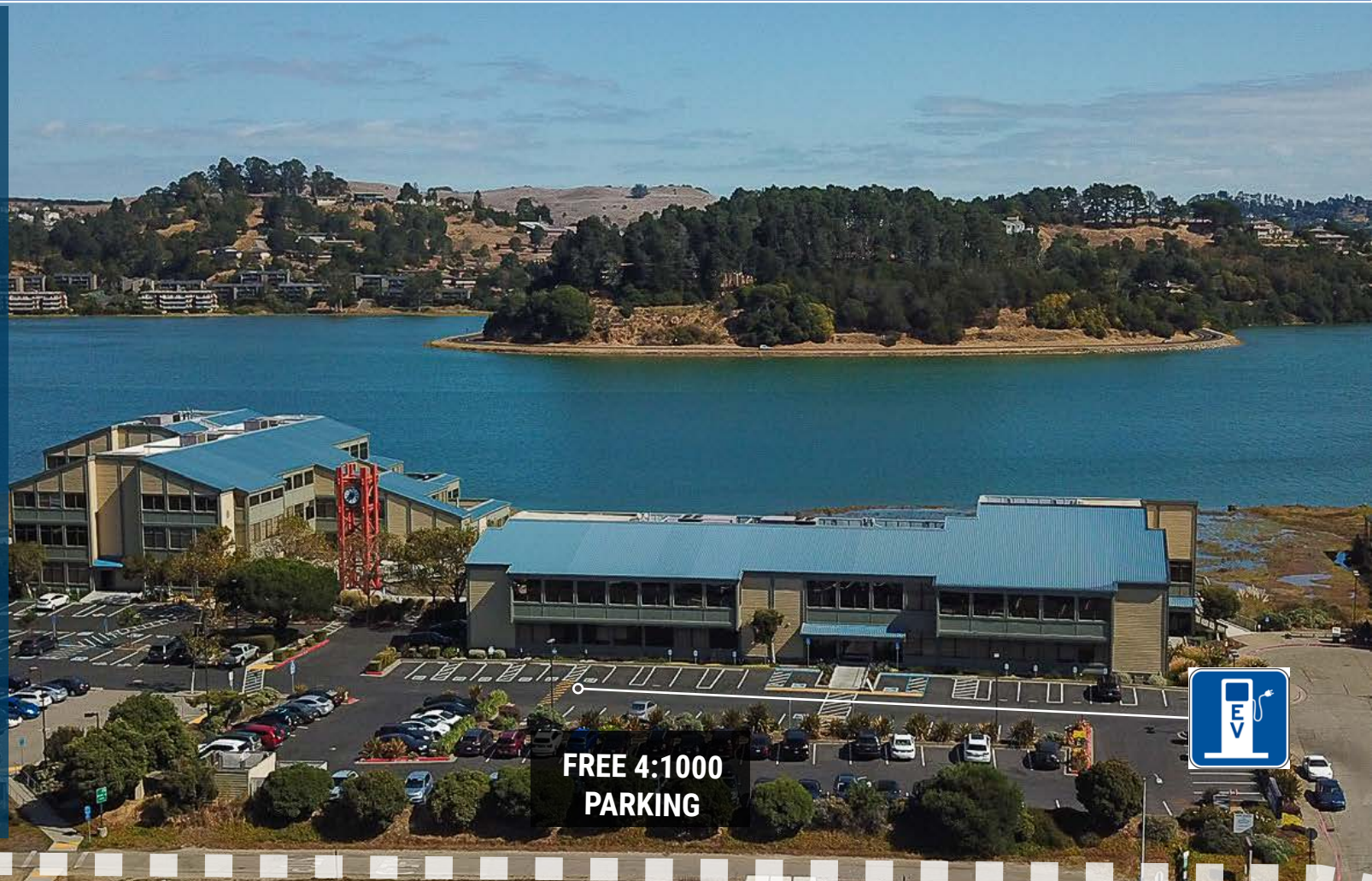
**ALISA BELEW**  
415.526.7663  
[alisa.belew@nrmk.com](mailto:alisa.belew@nrmk.com)  
CA DRE #01821371

# PROJECT HIGHLIGHTS

100 SHORELINE HIGHWAY

Mill Valley | California

- 3 Story Class A office buildings with stairway access to all floors
- Excellent freeway access  
Highly visible identity to approximately 40 million cars per year
- 20 minutes from Downtown San Francisco
- Waterfront location with stunning views of Richardson Bay and Mount Tamalpais
- Adjacent to world-class bike route from San Francisco through Marin County



**FREE 4:1000  
PARKING**



**BIKE ROUTE - MILL VALLEY/SAUSALITO MULTI-USE PATHWAY**



# PROJECT HIGHLIGHTS

100 SHORELINE HIGHWAY

Mill Valley | California

*Come join Club Evexia, a ±21,622 SF state-of-the-art fitness and wellness center offering TRX, Pilates, yoga, cycle classes, one-on-one training and group training services! All Shoreline Office Center tenants receive a special gym membership rate!*

## EXCELLENT ECONOMICS

- A fraction of the cost of San Francisco spaces. Substantial savings on rental rates, tenant improvements and operating costs
- Flexibility to layout a variety of configurations, the building offers impressive efficiency
- Free parking at a ratio of 4 spaces per 1,000 SF
- No occupancy taxes in Marin County

## INCOMPARABLE WORK ENVIRONMENT

- Existing spaces incorporate ample conference rooms and breakrooms, impressive private offices and open work areas, and fiber ready server rooms
- Waterfront outdoor seating throughout the property provides open-air seating that is second-to-none. Immediate access to the Mill Valley/Sausalito Bike-way for walking and biking
- Minutes from world class dining, shopping and business services at Strawberry Village and Sausalito



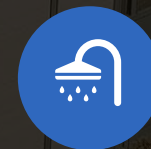
SETTING



ACCESS



IDENTITY



AMENITIES



ECONOMICS

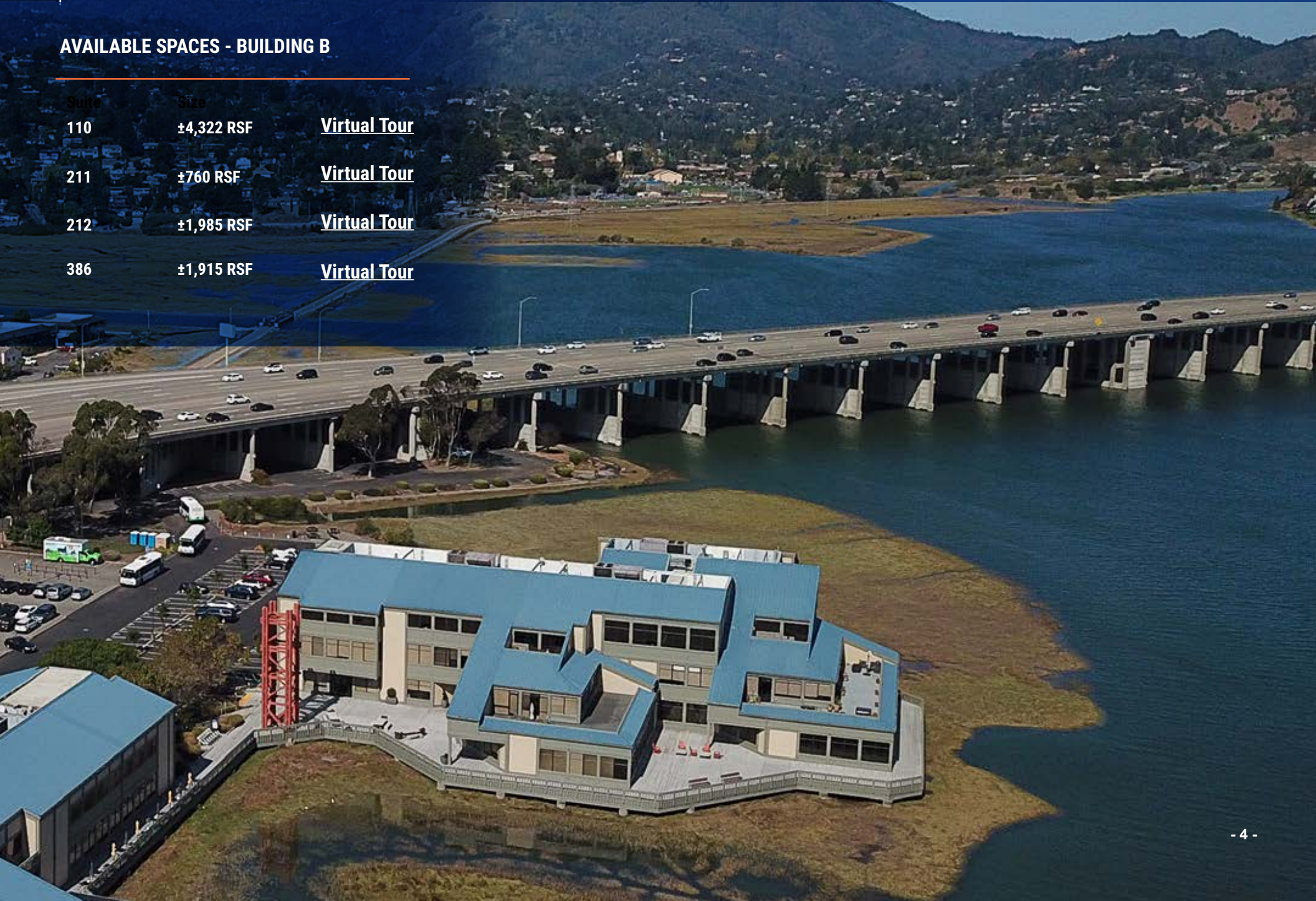
# PROJECT AVAILABILITY

100 SHORELINE HIGHWAY

Mill Valley | California

## AVAILABLE SPACES - BUILDING B

Suite	Size	
110	±4,322 RSF	<a href="#">Virtual Tour</a>
211	±760 RSF	<a href="#">Virtual Tour</a>
212	±1,985 RSF	<a href="#">Virtual Tour</a>
386	±1,915 RSF	<a href="#">Virtual Tour</a>



Richardson Bay

Suite B-110  
±4,322 RSF

[Virtual Tour](#)



-  BALCONIES
-  AVAILABLE
-  OCCUPIED

Shoreline Highway

# SECOND FLOOR-PLAN

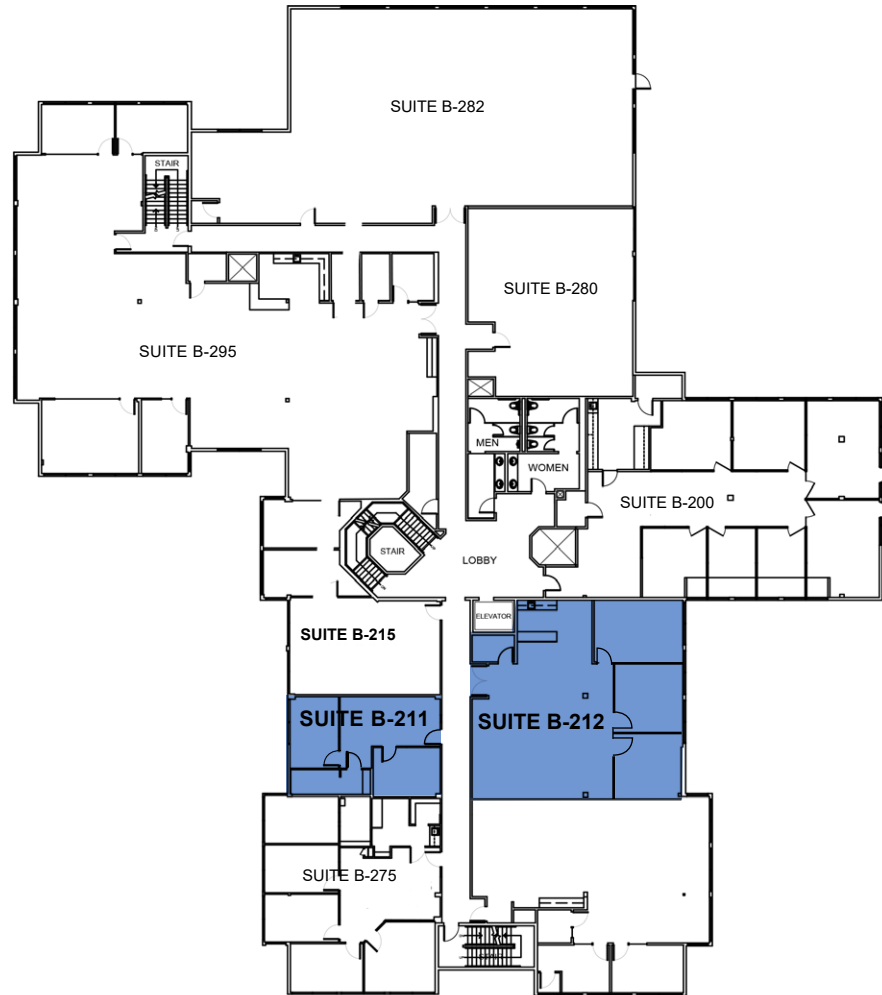
100 SHORELINE HIGHWAY

Mill Valley | California

Richardson Bay

Suite B-212  
±1,985 RSF  
[Virtual Tour](#)

Suite B-211  
±760 RSF  
[Virtual Tour](#)

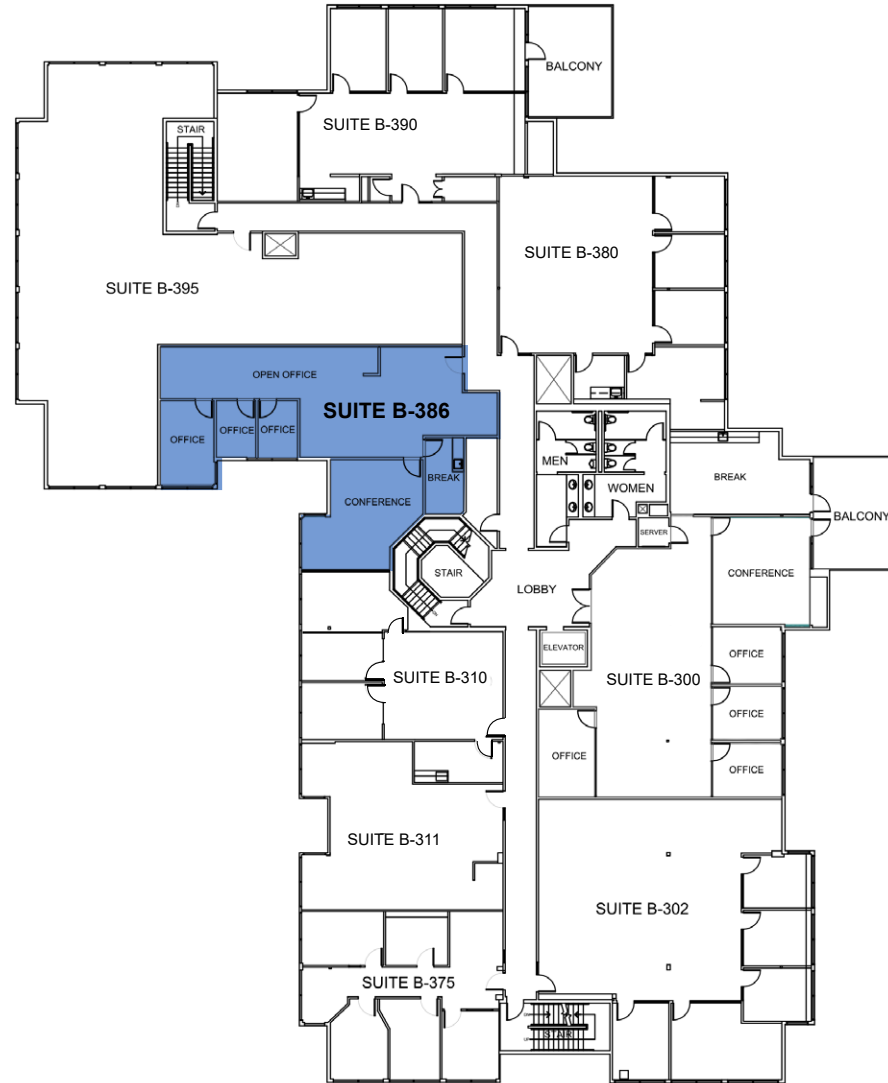


● AVAILABLE

○ OCCUPIED

Shoreline Highway

Richardson Bay



Suite B-386  
±1,915 RSF

[Virtual Tour](#)

- AVAILABLE
- OCCUPIED

Shoreline Highway

# TRANSPORTATION MAP

## 100 SHORELINE HIGHWAY

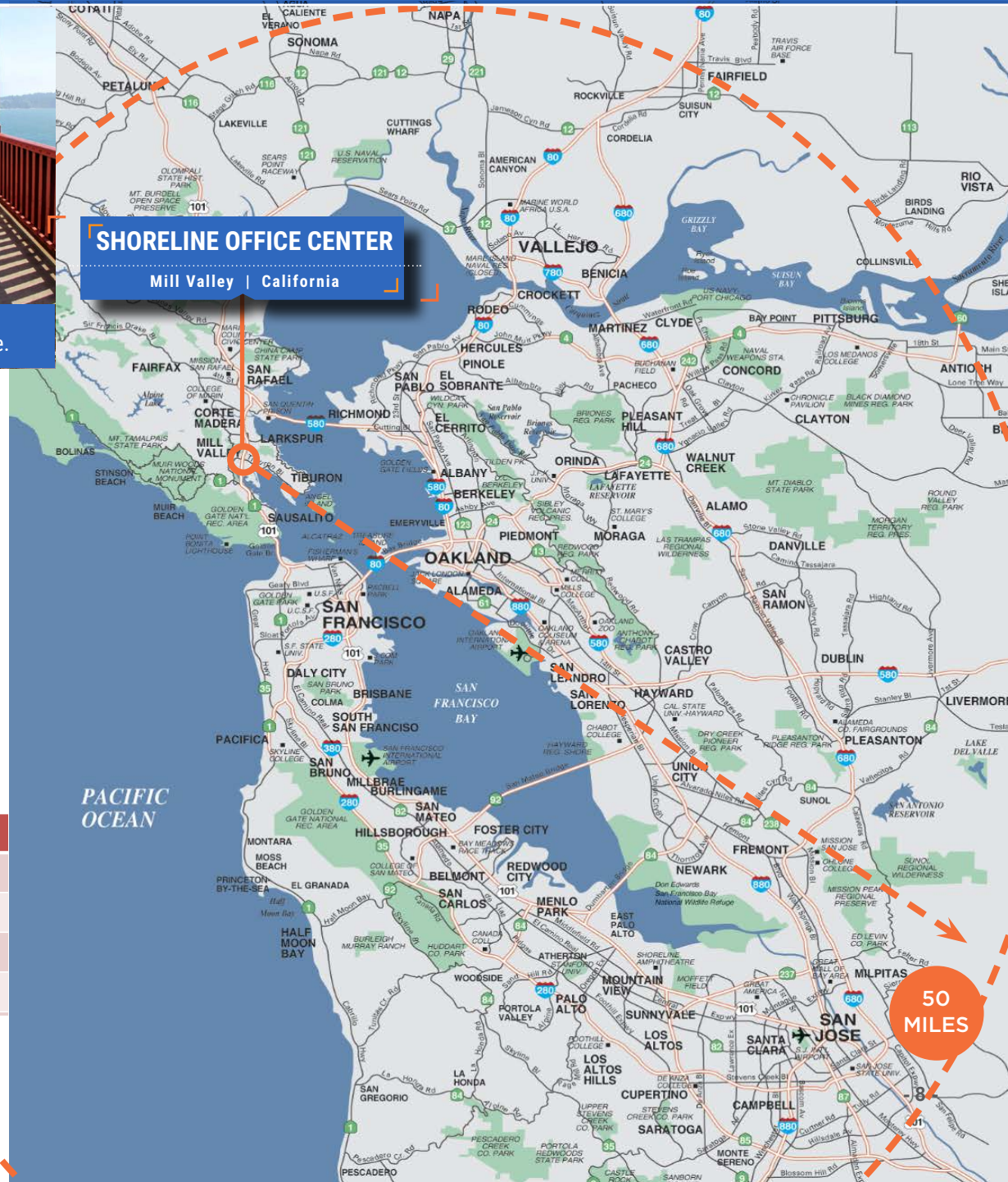
Mill Valley | California



Golden Gate Ferry and bus service within a short walk of the property.



Spectacular drive or bike ride across the Golden Gate Bridge.



Morning Commute	To Mission/First	To Shoreline A
Union/Fillmore	17 mins	15 mins
Berkeley	37 mins	43 mins
Walnut Creek	52 mins	59 mins
Petaluma	85 mins	40 mins

Evening Commute	From Mission/First	From Shoreline A
Union/Fillmore	20 mins	25 mins
Berkeley	51 mins	48 mins
Walnut Creek	76 mins	90 mins
Petaluma	82 mins	54 mins

**NEWMARK**



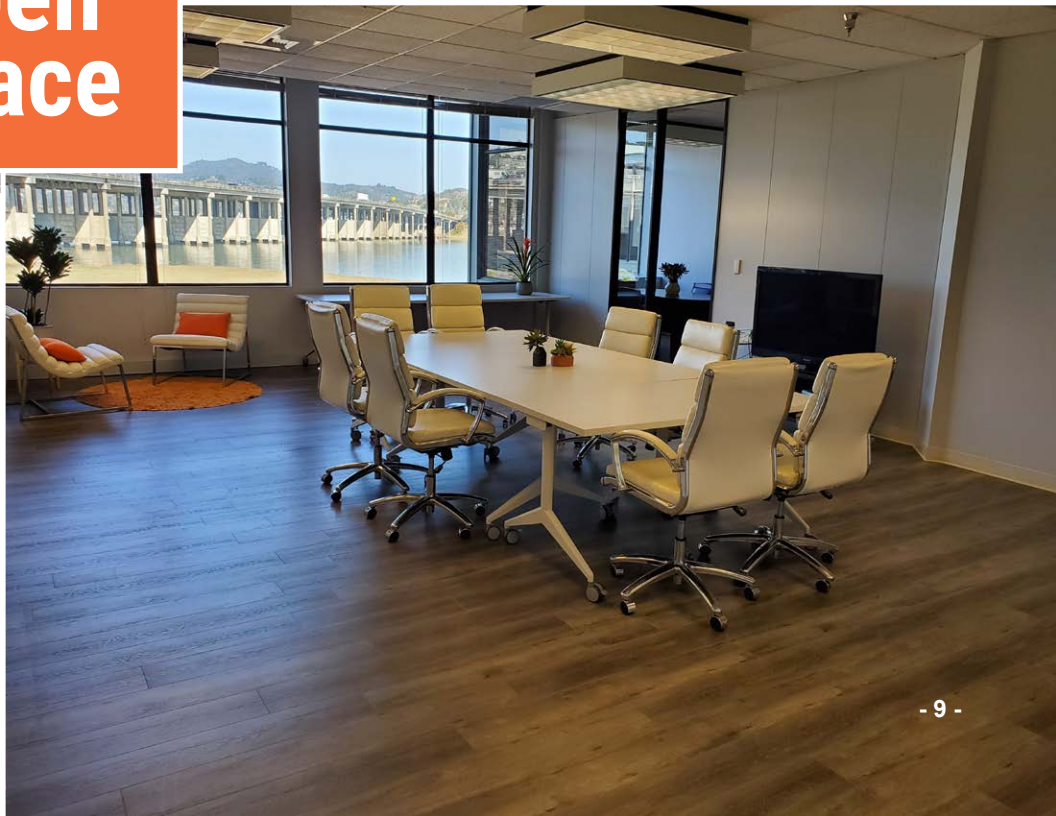
# PHOTO GALLERY

100 SHORELINE HIGHWAY

Mill Valley | California



**VIEWS**  
open  
space



# PHOTO GALLERY

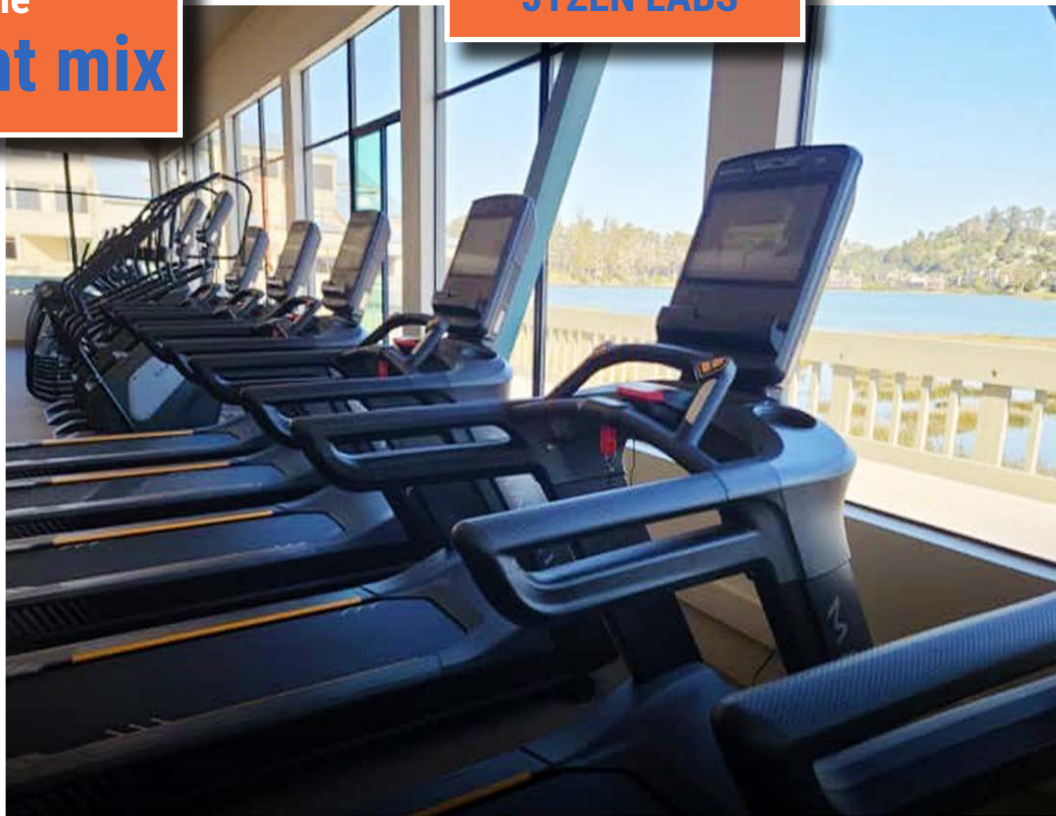


**CLUB EVEVIXIA**



**JYZEN LABS**

**JOIN**  
the  
**tenant mix**





SHORELINE OFFICE CENTER IS CONVENIENTLY LOCATED NEAR MILL VALLEY'S SHOPPING CENTERS; STRAWBERRY VILLAGE, TAM VALLEY JUNCTION, MARIN GATEWAY AND SAUSALITO'S POPULAR DINING. THE SHOPPING CENTERS OFFER A LARGE VARIETY OF DINING, BANKING, GROCERY AND SHOPPING OPTIONS FOR LOCAL PROFESSIONALS.

**STRAWBERRY VILLAGE SHOPPING**

**APPAREL & ACCESSORIES**

Archival Sports  
Rims & Goggles

**HEALTH & BEAUTY**

Club Evexia  
Jyzen Labs  
Evo Spa  
Golden Gate Urgent Care  
Kaiser Permanente  
Lavande Spa & Boutique  
Pure Barre  
SkinSpirit  
Strawberry Village  
Dental Care

**HOME & DECOR**

Calico  
The Shade Store  
The Spanish Table  
West Elm

**FINANCIAL SERVICES**

Bank of America ATM  
First Republic Bank  
Union Bank  
Wells Fargo Bank  
Westamerica Bank

**GROCERY**

Safeway

**PHOTO SERVICES**

Mike's Camera

**RESTAURANTS & FOOD**

Harmony Restaurant  
High Tech Burrito  
In-N-Out Burger  
New York Bagel  
Pizza Antica  
Starbucks  
Sweet•E Organic  
Thep Lela Thai

**SPECIALTY SHOPS**

Telford's Pipe & Cigar, Inc.  
Woodlands Pet Food & Treats

**VIDEO & ELECTRONICS**

AT&T

**SERVICES**

Performing Arts Academy of Marin  
RAM Print & Communications  
Strawberry Cleaners  
Strawberry Shoes & Watch Repair

**TAM VALLEY JUNCTION**

The Junction Beer Garden  
Hook Fish Co.  
Cafe Del Soul  
Good Earth Natural Foods  
Walgreens  
Shoreline Coffee Shop  
Domino's Pizza  
Equator Coffees  
Buckeye Roadhouse  
Muir Woods Lodge  
Holiday Inn Express

**MARIN GATEWAY SHOPPING CENTER**

Target  
CVS  
Starbucks  
Panda Express  
West Marine Supply  
Ross Dress for Less  
Anytime Fitness

**FUN ACTIVITIES**

Seaplane Adventures  
Buckeye Roadhouse  
Festive Bar & Dining  
Sea Trek Kayak and Stand Up Paddle Board  
Sausalito Bike Rentals  
Sausalito Ferry Terminal

**SAUSALITO DINING**

Sushi Ran  
Fish.  
Le Garage  
Avatars  
Saylor's  
Tommy's Wok  
The Spinnaker  
Seafood Peddler

# AMENITIES AERIAL





**HADEN ONGARO**

415.526.7649  
haden.ongaro@nrmk.com  
CA DRE #00916960

**ALISA BELEW**

415.526.7663  
alisa.belew@nrmk.com  
CA DRE #01821371

1101 Fifth Avenue  
Suite 370  
San Rafael, CA 94901  
415-526-7676

[nrmk.com](http://nrmk.com)

**NEWMARK**

*"When we were shown 100 Shoreline Hwy by our broker, we knew right away that this one-of-a-kind property was home for our Fitness & Wellness Center, Club Evexia. The property offered everything we could hope for including a world class location on the bay, easy free-way access, plenty of parking and an unbelievable setting. If that wasn't enough, working with Basin Street Properties was one of the best experiences we could have hoped for."*

**- Scott Raymond, Co-Founder Club Evexia**

The distributor of this communication is performing acts for which a real estate license is required. The information contained herein has been obtained from sources deemed reliable but has not been verified and no guarantee, warranty or representation, either express or implied, is made with respect to such information. Terms of sale or lease and availability are subject to change or withdrawal without notice. Last edited: August 28, 2023 5:27 PM