

FOR LEASE **Santa Rosa**

# Stony Point Center



Strategic Location in the Stony Point Area of Santa Rosa



# FOR LEASE **Santa Rosa** **Stony Point Center**



[ThriveatStonyPoint.com](http://ThriveatStonyPoint.com)

## Class A Offices in Santa Rosa's Premier Office Park

Type:  
**Office**

Address:  
**100, 110, 120 Stony Point Rd  
Santa Rosa, CA**

Total SF  
**220,100**

# of Floors  
**Three Buildings:  
2 Stories**



Project  
Video

### **DESCRIPTION**

The Stony Point Campus is a collection of four Class A office buildings located on a beautiful three-acre man-made lake with glass block fountains, walking paths and dramatic water displays. The buildings offer extensive glass lines and oak trim finishes. These four buildings were built between 1990-2001 and considered the "premier" office park within Santa Rosa. The project is known for its unique campus-like environment, institutional-quality construction, and central location near both employee and executive residences. The property also benefits from its immediate proximity to Highways 101 and 12, public transportation and onsite amenities.

### **LOCATION**

The portfolio's location provides close proximity to the region's executive housing and over 3.4 million square feet of regional retail amenities within a two mile radius. Nearby retail amenities include Coddington Mall, the region's shopping mall and Santa Rosa's primary retail destination. Coddington Mall has over 45 stores and features Whole Foods, Target, Macy's and Nordstrom Rack.

### **AMENITIES**

- Spacious lobbies in tenant suites and common areas.
- Campus setting with water features, seating areas, fountains, walking paths & public art.
- Interior tenant improvements
  - Custom high quality finishes and multiple conference rooms.

### **KEY TENANTS**

Sutter Health	BPM LLP
National Instruments	Abbey Weitzenberg
Vantreo	



EXCLUSIVELY MARKETED BY:  
**Shawn Johnson**  
DRE#: 00835502

**Dave Peterson**  
DRE#: 01280039

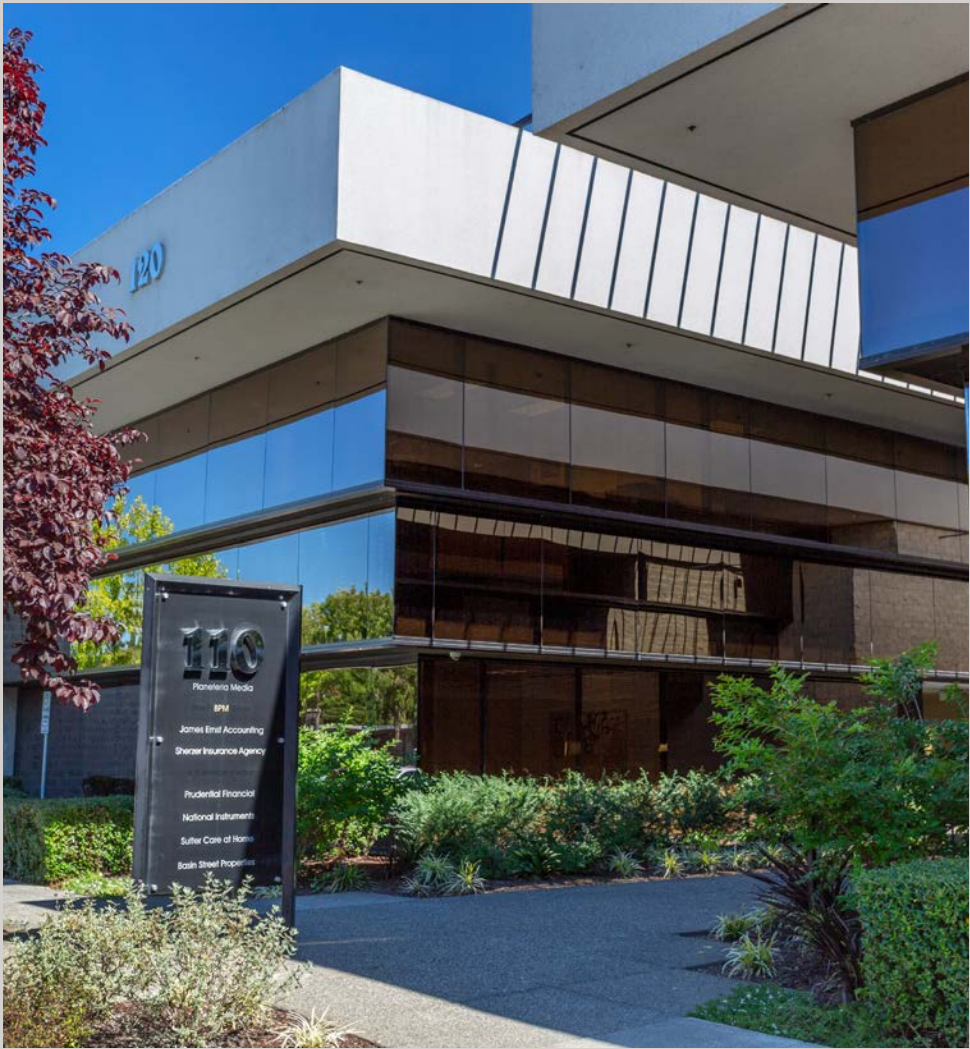
**Brian Keegan**  
DRE#: 01809537



# FOR LEASE **Santa Rosa** **Stony Point Center**



ThriveatStonyPoint.com



EXCLUSIVELY MARKETED BY:  
**Shawn Johnson**  
DRE#: 00835502

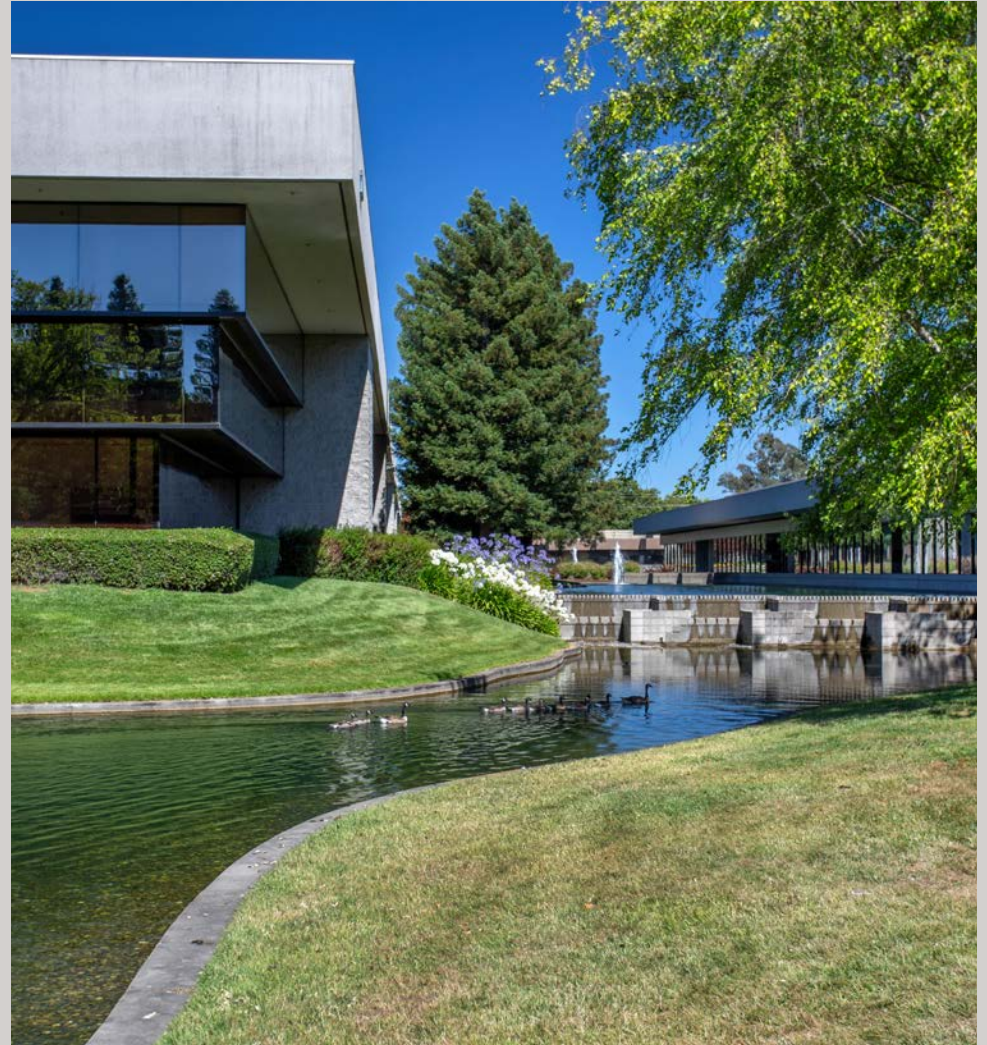
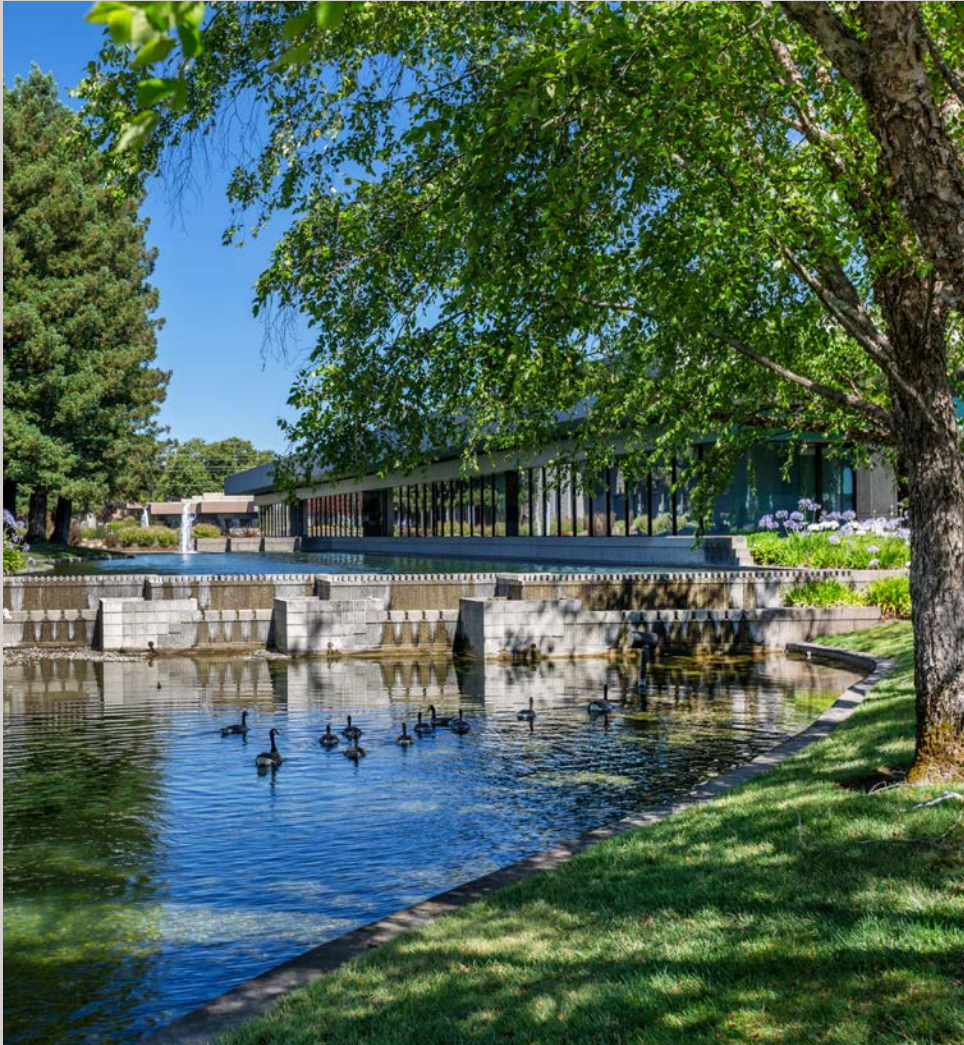
**Dave Peterson**  
DRE#: 01280039

**Brian Keegan**  
DRE#: 01809537



FOR LEASE **Santa Rosa**  
**Stony Point Center**

[ThriveatStonyPoint.com](http://ThriveatStonyPoint.com)

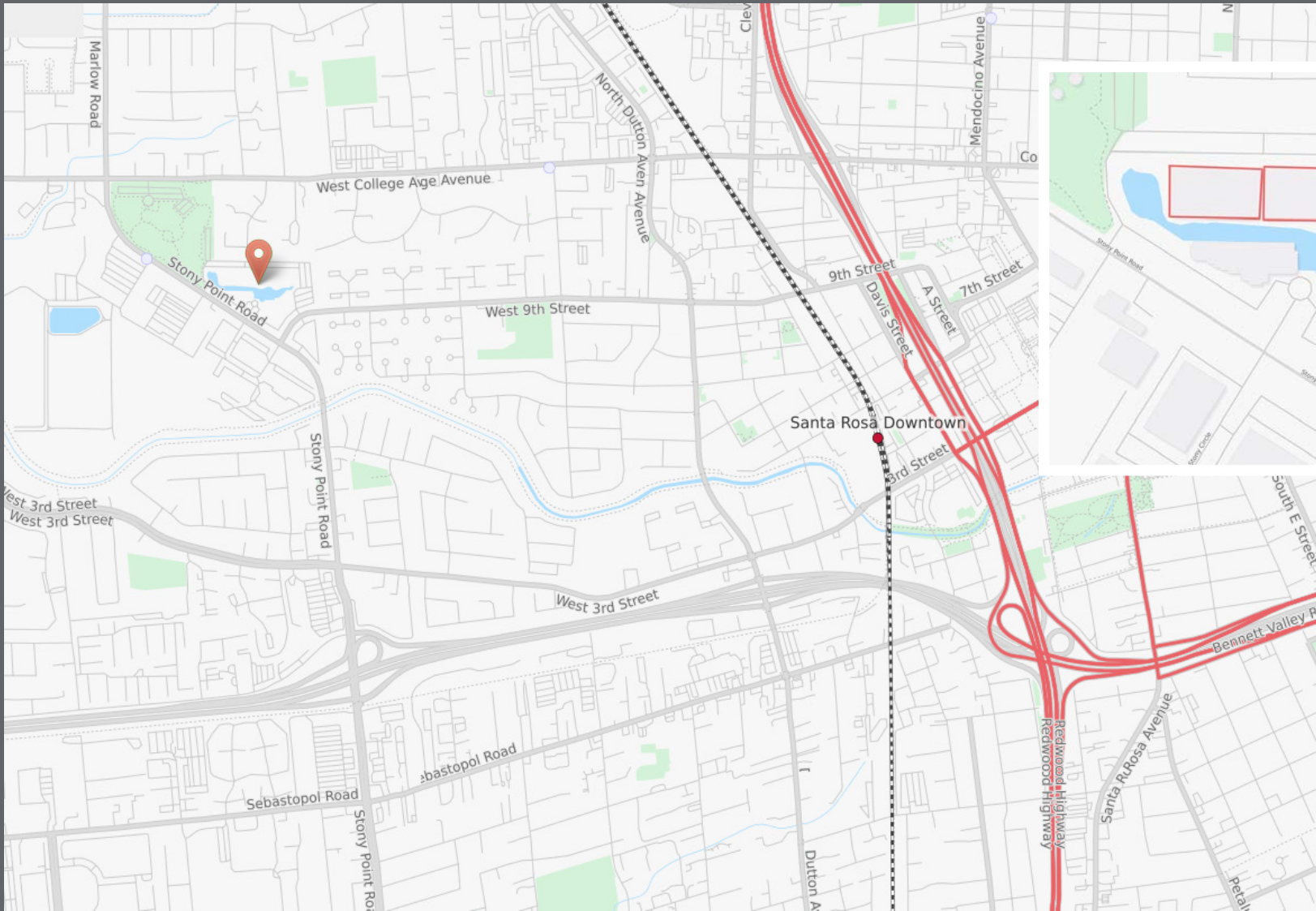




FOR LEASE **Santa Rosa**  
**Stony Point Center**

Located in Santa Rosa's premier Stony Point office park, with immediate proximity to Highways 101 and 12, public transportation, and amenities.

[ThriveatStonyPoint.com](http://ThriveatStonyPoint.com)



EXCLUSIVELY MARKETING BY:

**Shawn Johnson**  
DRE#: 00835502

**Dave Peterson**  
DRE#: 01280039

**Brian Keegan**  
DRE#: 01809537

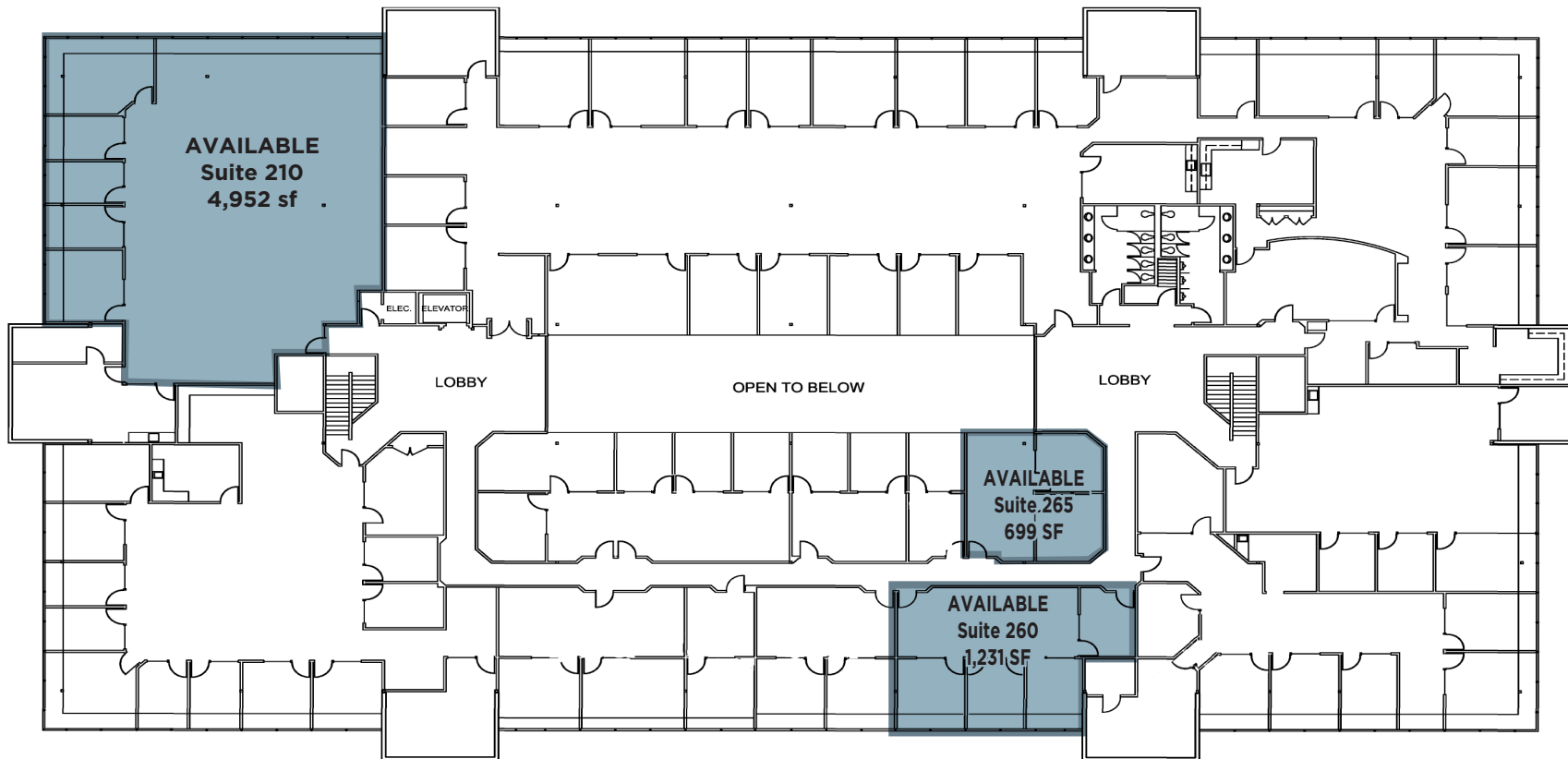
FOR LEASE **Santa Rosa**  
**Stony Point Center**

ThriveatStonyPoint.com

## 699-4,952 RSF

100 Stony Point Road  
First Floor

- Suite 210: 4,952 Square Feet
- Suite 260: 1,231 Square Feet
- Suite 265: 699 Square Feet



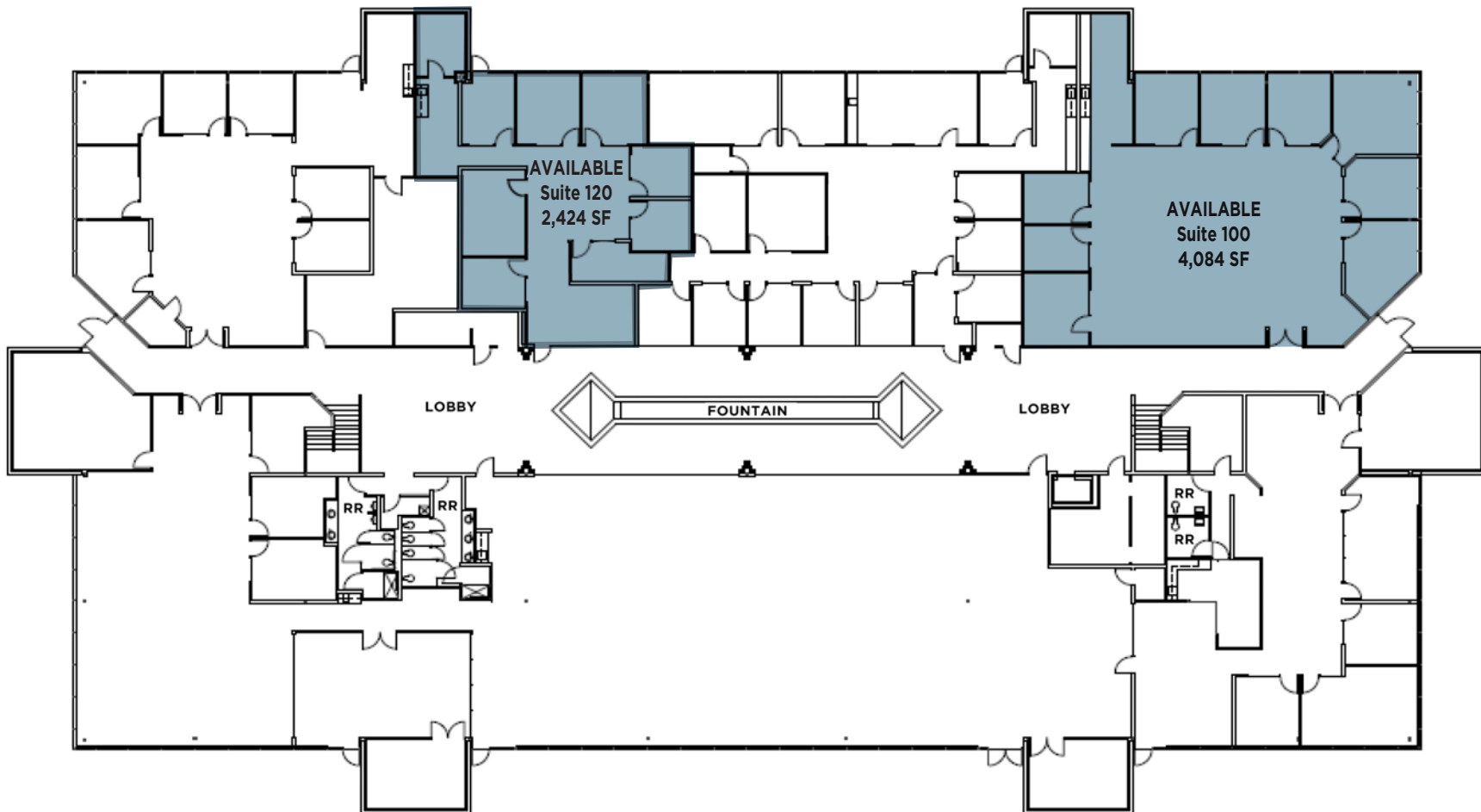
FOR LEASE **Santa Rosa**  
**Stony Point Center**

ThriveatStonyPoint.com

## 2,424-4,084 RSF

110 Stony Point Road  
First Floor

- Suite 100: 4,084 Square Feet
- Suite 120: 2,424 Square Feet



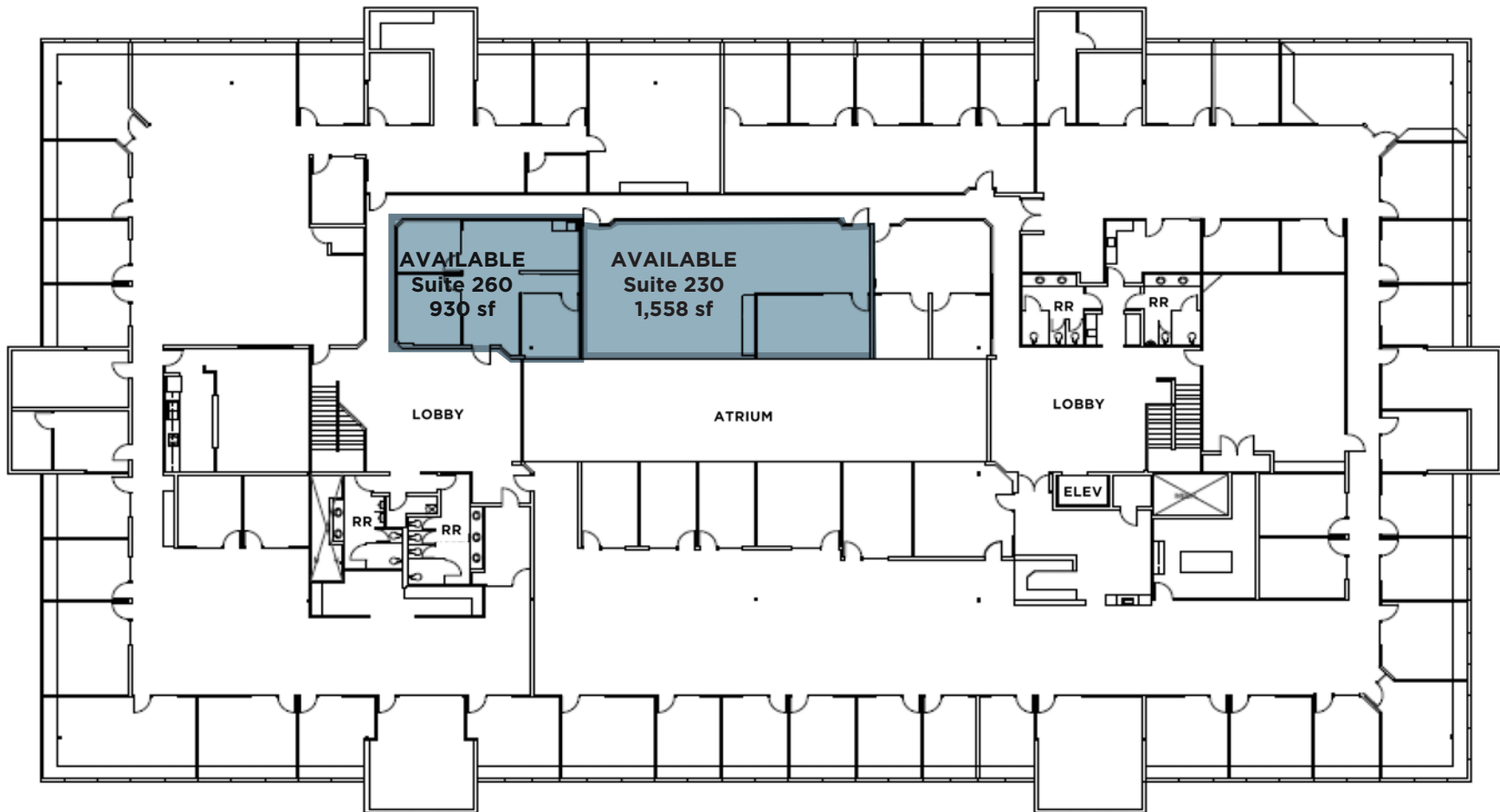
FOR LEASE **Santa Rosa**  
**Stony Point Center**

ThriveatStonyPoint.com

## 930-1,558 RSF

110 Stony Point Road  
Second Floor

- Suite 230: 1,558 Square Feet
- Suite 260: 930 Square Feet
- Suites 230 & 260 Combined: 2,488 Square Feet





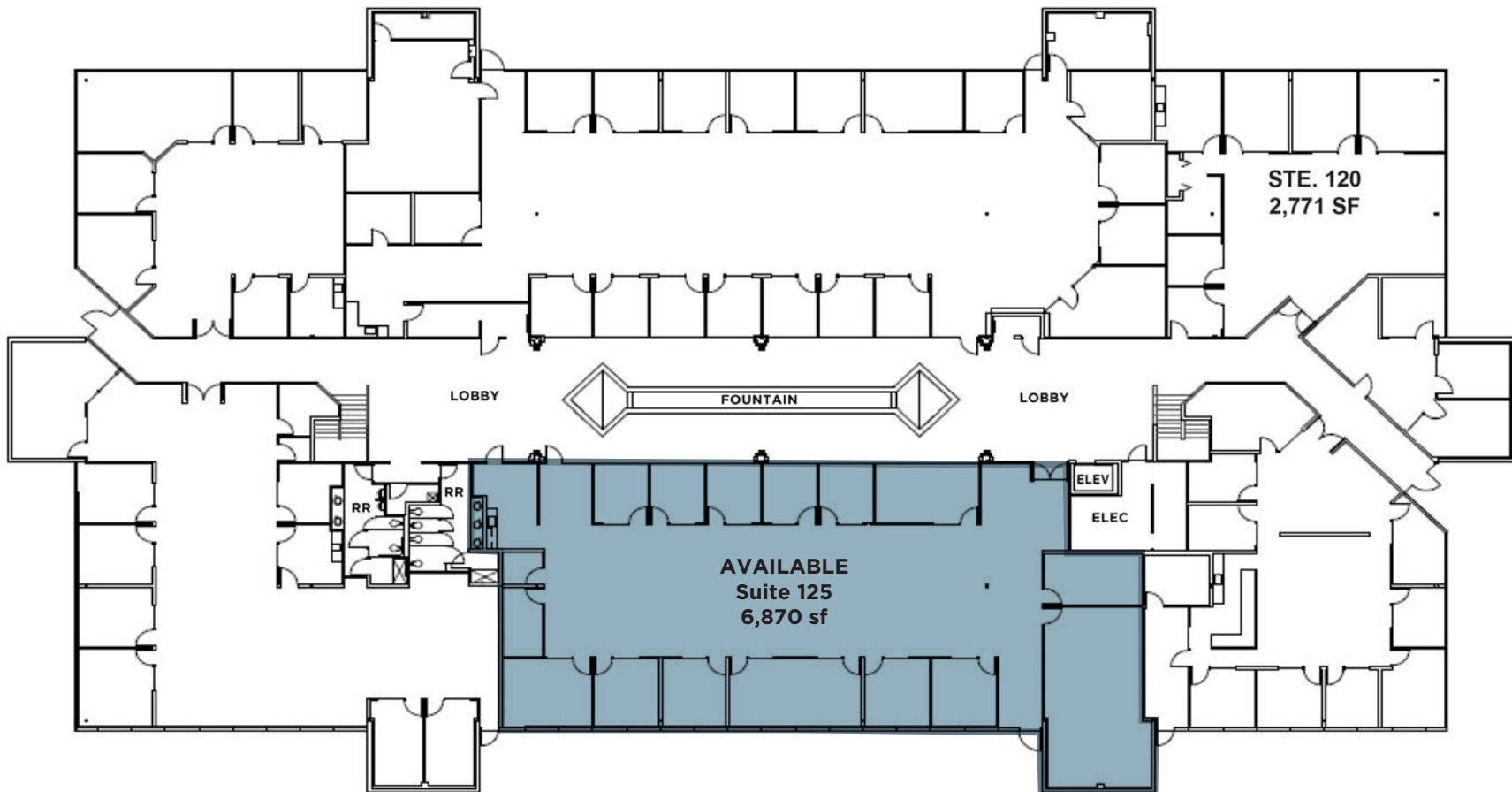
FOR LEASE **Santa Rosa**  
**Stony Point Center**

ThriveatStonyPoint.com

**6,870 RSF**

- Suite 125: 6,870 Square Feet

120 Stony Point Road  
First Floor



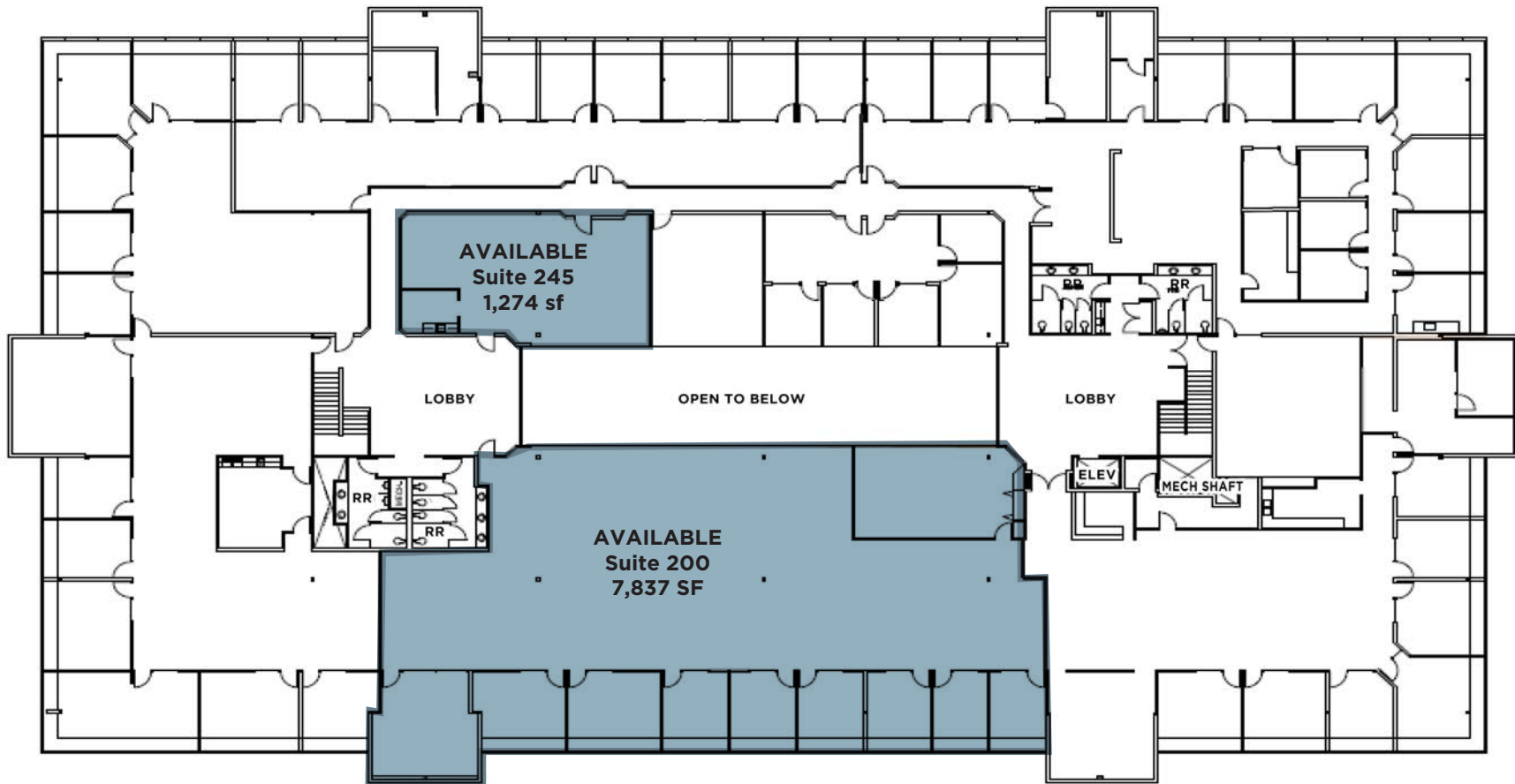
FOR LEASE **Santa Rosa**  
**Stony Point Center**

ThriveatStonyPoint.com

**1,274 - 7,837 RSF**

120 Stony Point Road  
Second Floor

- Suite 200: 7,837 Square Feet
- Suite 245: 1,274 Square Feet





# FOR LEASE Santa Rosa Stony Point Center

[ThriveatStonyPoint.com](http://ThriveatStonyPoint.com)

