

Freeway Visible Office Campus

California Center

Great Location near Watt Avenue with immediate access to Hwy 50



EXCLUSIVELY MARKETED BY: **Todd Eschelman**
916.569.2347
teschelma@ngkf.com
CA RE License #01051148

Kirk Lange
916.569.2331
klange@ngkf.com
CA RE License #00870313

Jack Blackmon
916.569.2372
jack.blackmon@ngkf.com
CA RE License #01999561



Freeway Visible Office Campus



Units from 1,417 SF - 6,304 SF

- Onsite property manager & facilities engineer
- Onsite conference room and fitness center
- Shaded decks and patios
- Located within minutes of Sacramento's CBD
- Light rail station directly across the street
- Retail services immediately adjacent to the property
- Immediate freeway access to Highway 50's new on/off ramp
- Night and weekend security
- Fiber optic cabling to the property



Solar Panels On Site

- 550kW in energy production
- Shaded parking for approximately 125 stalls
- Discounted electricity expenses through renewable energy generated onsite



[Project Video](#)

Two Building Complex for Lease



Onsite fitness facility



Onsite conference room



[Project Video](#)

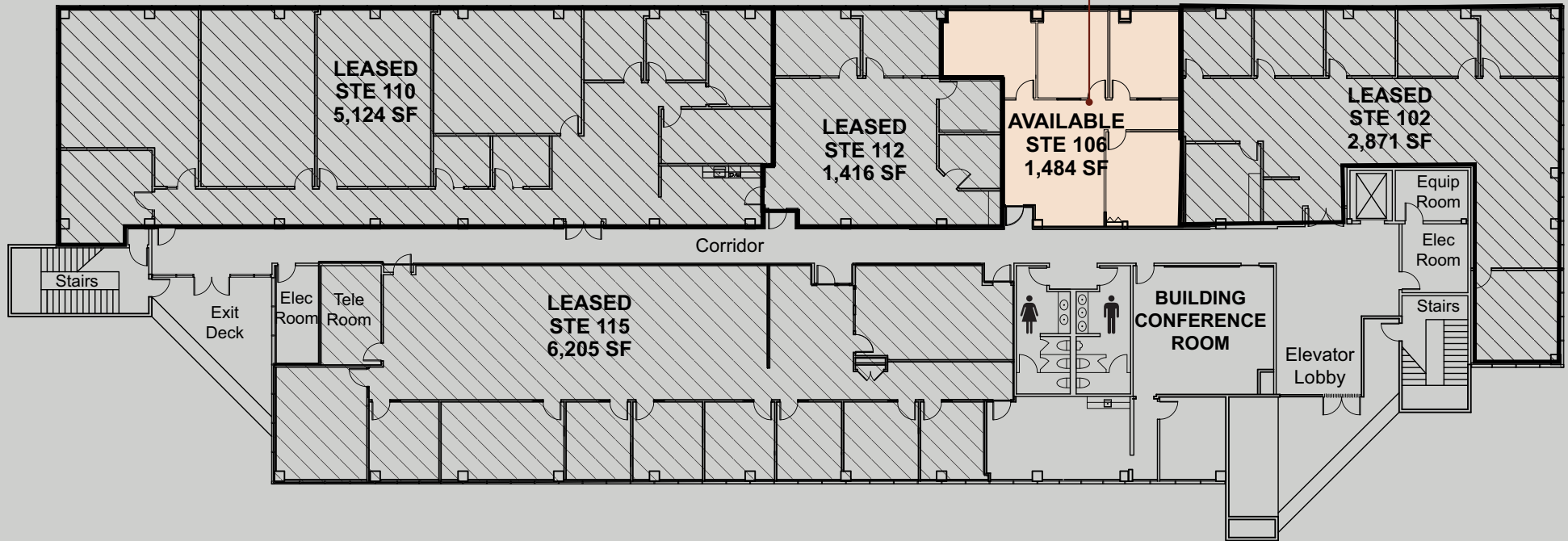
Building 1

First Floor



CLICK HERE
FOR PHOTOS

Suite 106



[Project Video](#)

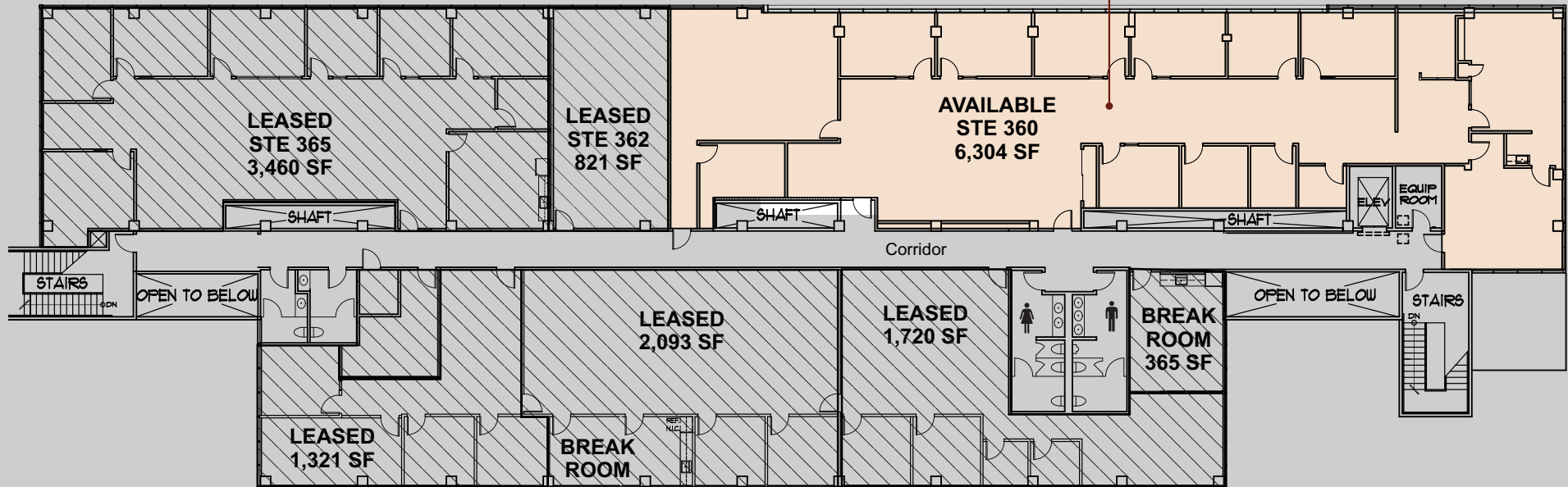
Building 1

Third Floor



CLICK HERE
FOR PHOTOS

Suite 360



[Project Video](#)

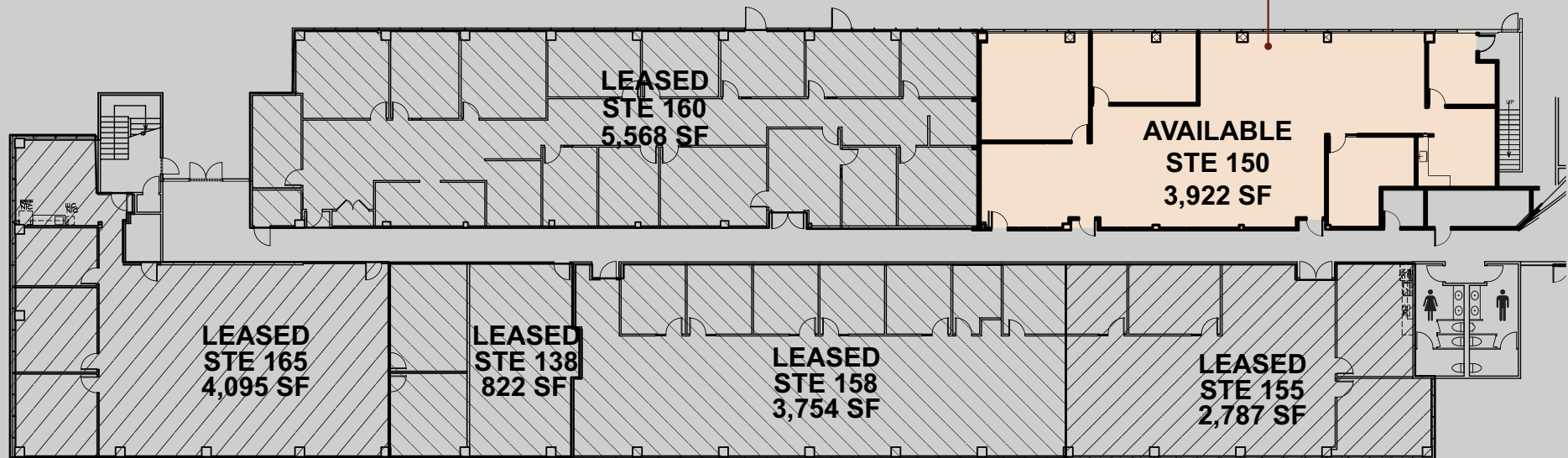
Building 2

First Floor



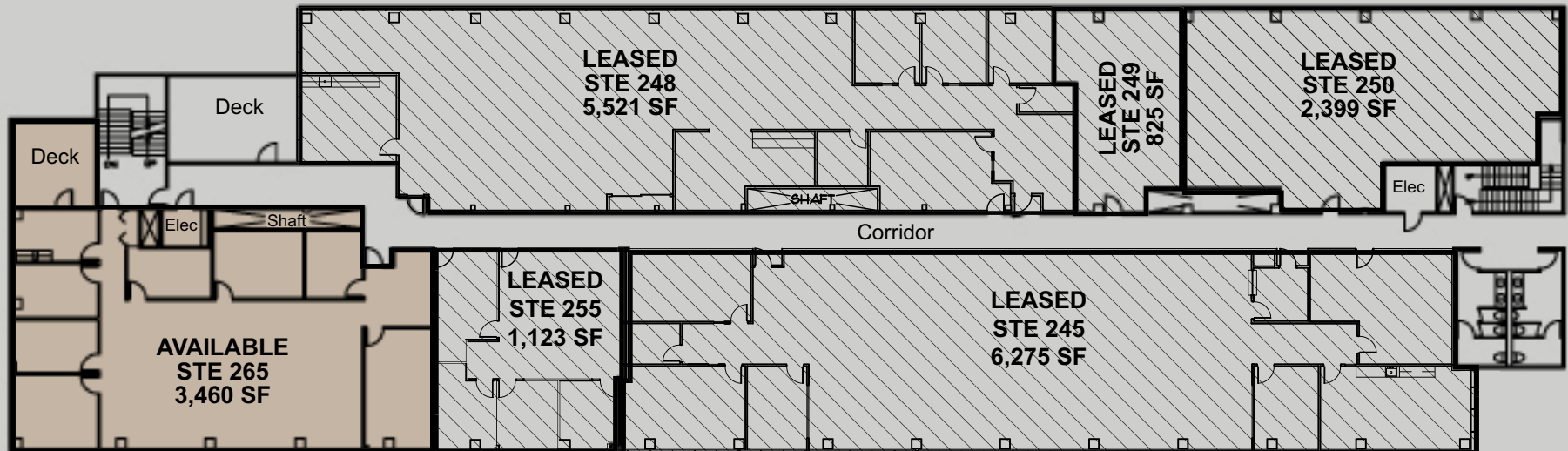
**CLICK HERE
FOR PHOTOS**

Suite 150



[Project Video](#)

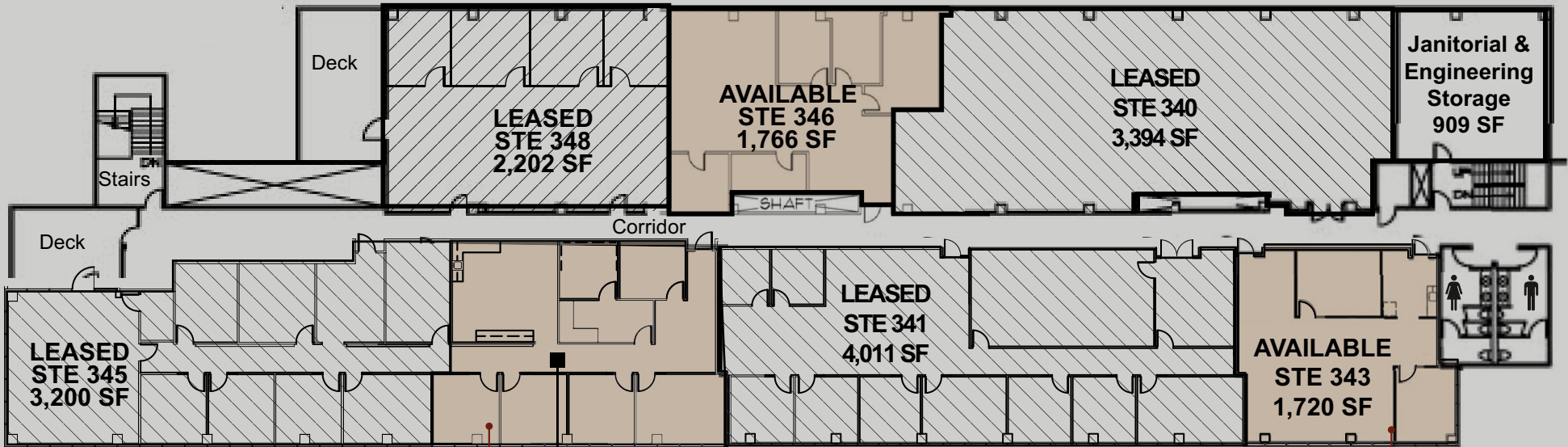
Building 2 Second Floor



[Project Video](#)

Building 2

Third Floor



AVAILABLE
STE 344
1,766 SF

**CLICK HERE
FOR PHOTOS**

Suite 344



**CLICK HERE
FOR PHOTOS**

Suite 343



[Project Video](#)

8950 Cal Center Drive | Sacramento, CA 95826

California Center



[Project Video](#)



EXCLUSIVELY MARKETING BY: **Todd Eschelman**
916.569.2347
teschelman@ngkf.com
CA RE License #01051148

Kirk Lange
916.569.2331
klange@ngkf.com
CA RE License #00870313

Jack Blackmon
916.569.2372
jack.blackmon@ngkf.com
CA RE License #01999561