

Freeway Visible Office Campus

California Center

8950 Cal Center Drive

Great Location near Watt Avenue with immediate access to Hwy 50



NEWMARK

EXCLUSIVELY
MARKETED BY:

Todd Eschelman

916.569.2347

todd.eschelman@nrmk.com

CA RE License #01051148

Kirk Lange

916.569.2331

kirk.lange@nrmk.com

CA RE License #00870313

Jack Blackmon

916.569.2372

jack.blackmon@nrmk.com

CA RE License #01999561


BASIN STREET
PROPERTIES

Freeway Visible Office Campus



Units from 1,083 SF - 6,308 SF

- Onsite property manager & facilities engineer
- Onsite conference room and fitness center
- Shaded decks and patios
- Solar panels providing 128 shaded parking stalls
- Located within minutes of Sacramento's CBD
- Light rail station directly across the street
- Retail services immediately adjacent to the property
- Immediate freeway access to Highway 50's new on/off ramp
- Night and weekend security
- Fiber optic cabling to the property

Two Building Complex for Lease



Onsite fitness facility



Onsite conference room



New Solar Panel Installation



- 128 covered parking stalls
- Project generation: 724,120 kWh/year
- Annual carbon emission reduction: 564 tons

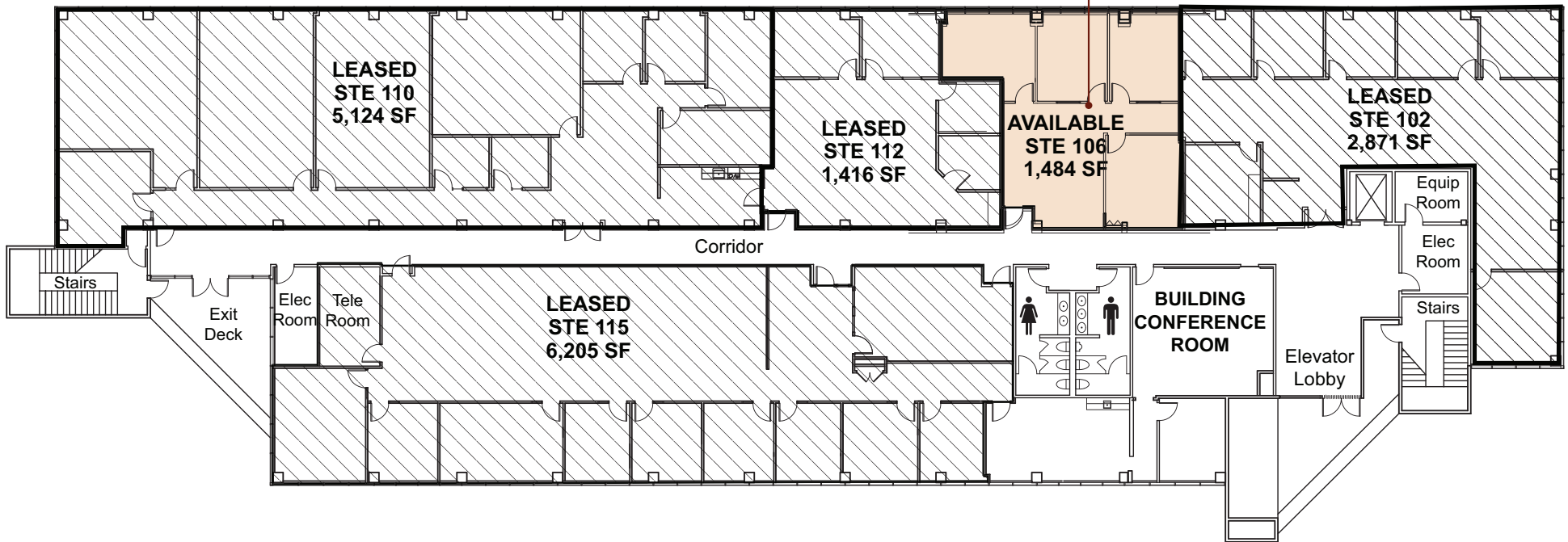
Building 1

First Floor



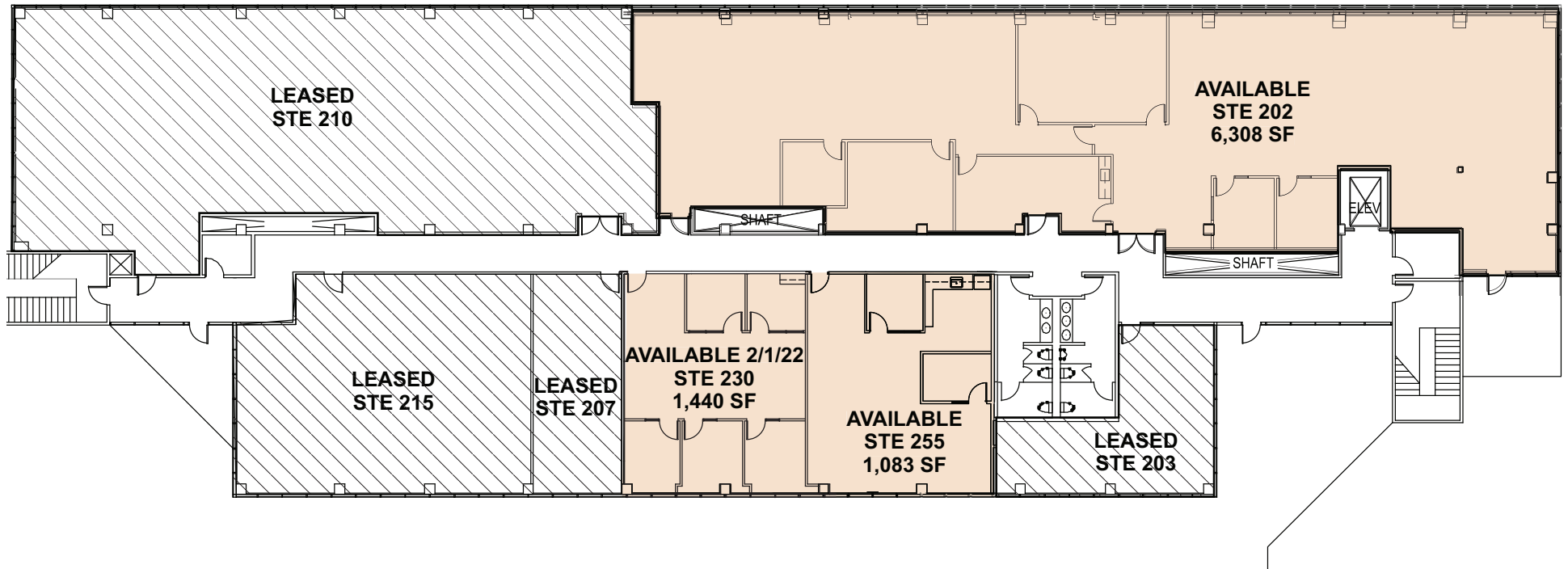
**CLICK HERE
FOR PHOTO/VIDEO**

Suite 106



Building 1

Second Floor



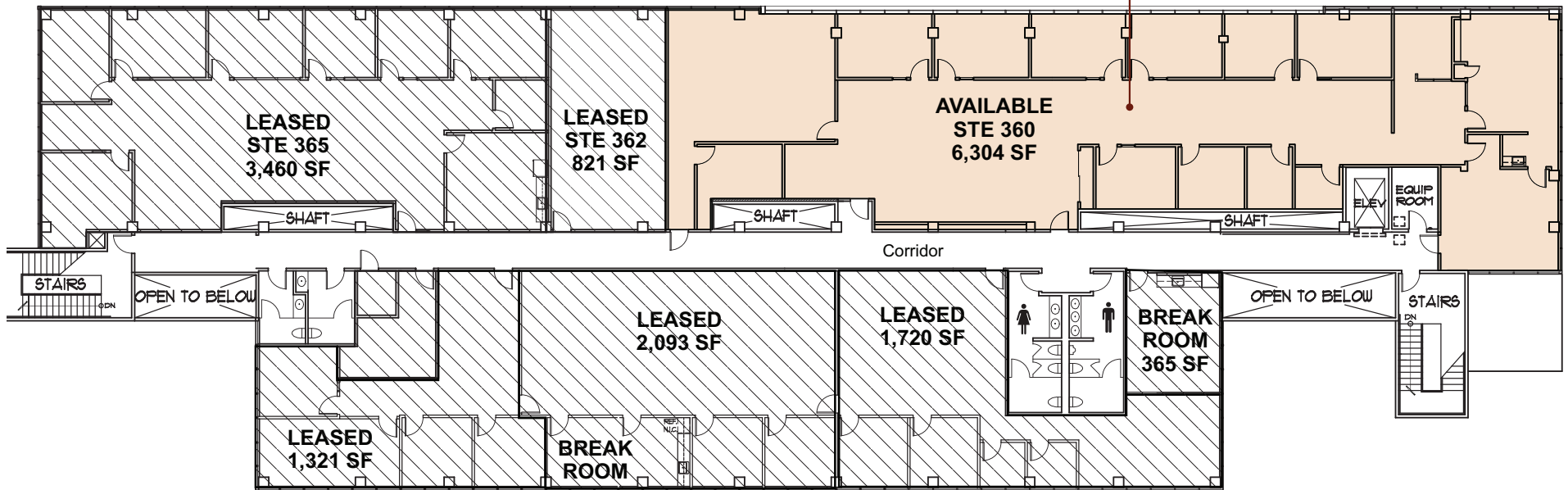
Building 1

Third Floor

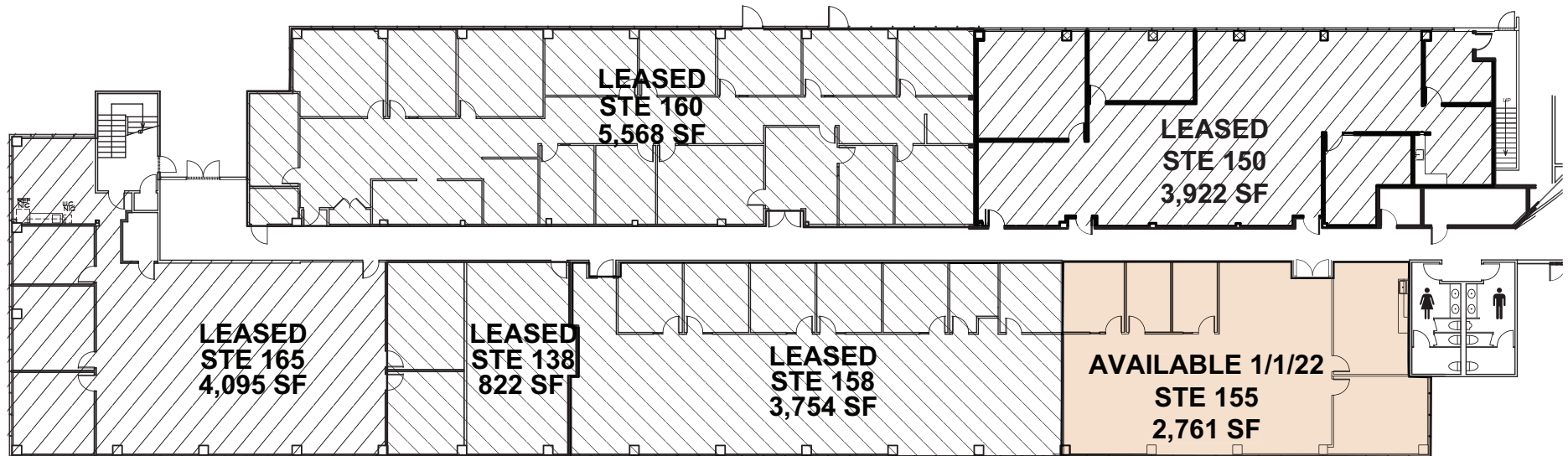


**CLICK HERE
FOR PHOTO/VIDEO**

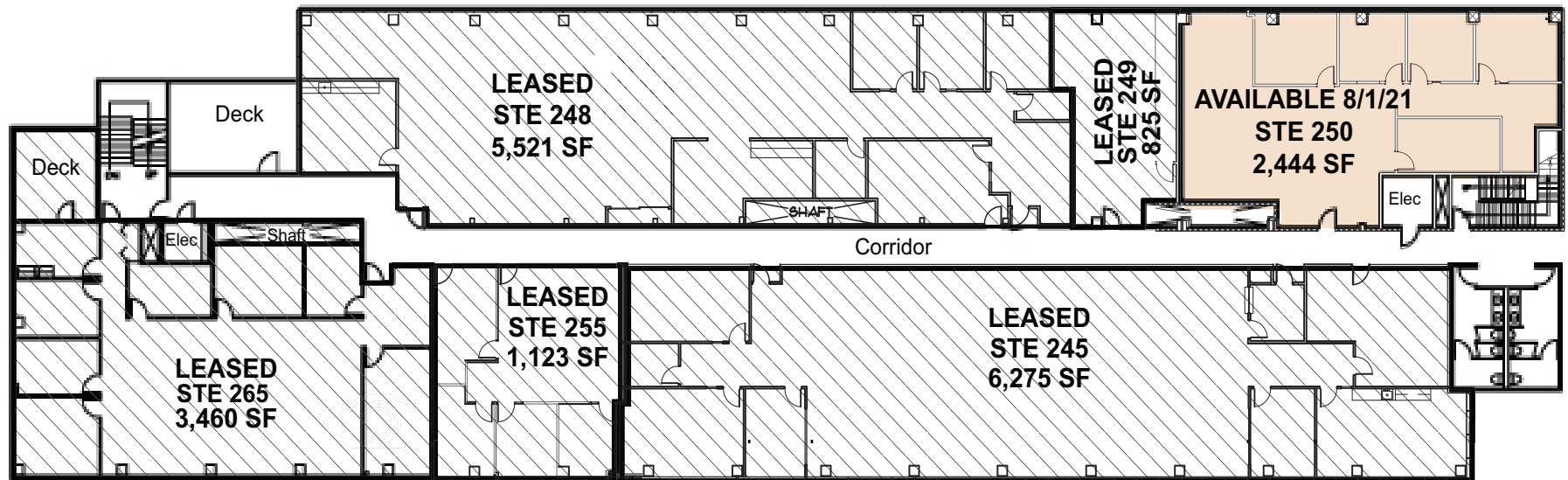
Suite 360



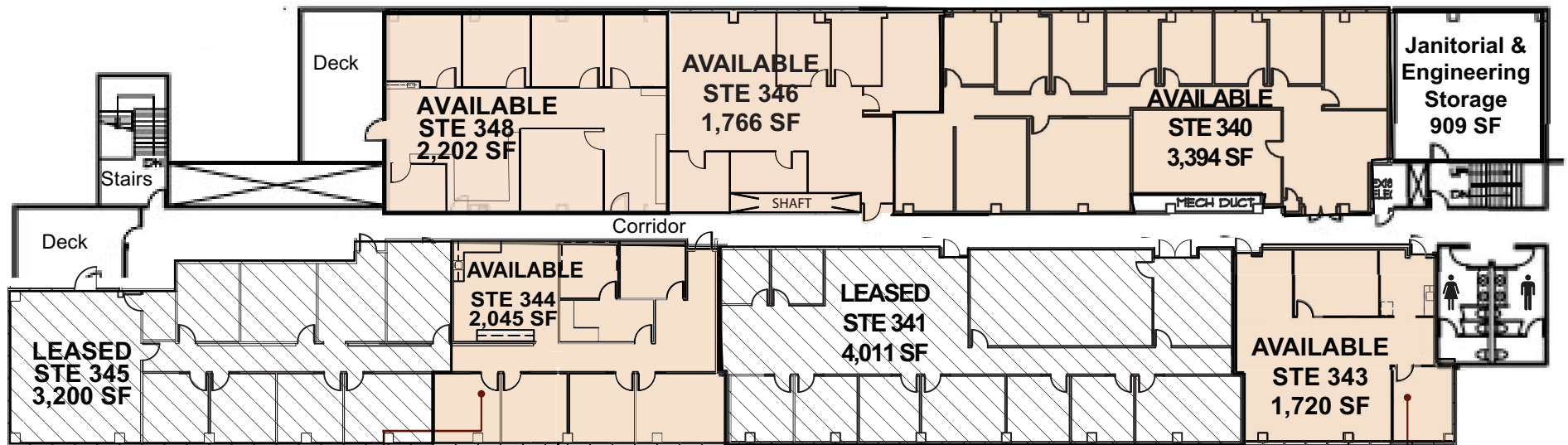
Building 2 First Floor



Building 2 Second Floor



Building 2 Third Floor



**CLICK HERE
FOR PHOTO/VIDEO**
Suite 344



**CLICK HERE
FOR PHOTO/VIDEO**
Suite 343

8950 Cal Center Drive | Sacramento, CA 95826

California Center



NEWMARK

EXCLUSIVELY
MARKETED BY:

Todd Eschelman
916.569.2347
todd.eschelman@nrmk.com
CA RE License #01051148

Kirk Lange
916.569.2331
kirk.lange@nrmk.com
CA RE License #00870313

Jack Blackmon
916.569.2372
jack.blackmon@nrmk.com
CA RE License #01999561

5-21 05-2041