



**BASIN STREET  
PROPERTIES**  
EST. 1974

# DOWNTOWN OFFICE FOR LEASE

## 50 West Liberty

Reno, NV 89501

**Vibrant space in the center  
of the Financial and Legal  
Districts**

**SPACE AVAILABLE  
1,067 SF - 8,407 SF**



**View Drone Video**

**DOMINIC BRUNETTI, CCIM**  
PRINCIPAL  
775.850.3109 OFFICE  
dbrunetti@dicksoncg.com  
S.58419

**PATRICK RIGGS**  
775.220.4957 CELL  
priggs@dicksoncg.com  
S.180878





Walk Score - **96**  
**WALKER'S PARADISE**

## LOCATION HIGHLIGHTS

- Premier downtown location, in the center of it all
- Large lobby with upscale, professional look and feel
- Two onsite restaurants and the 50 West Eats lobby café
- Secure, ample covered parking for your employees and clients
- On-site property management & facility engineer
- On-site concierge to provide tenant services
- Less than five minutes to multiple entrances to both I-80 and HWY 395
- Direct access to public transit
- Next to federal and county courts
- Close proximity to the Reno/Tahoe International Airport





**"Basin Street provides wonderful office spaces and facilities. We appreciate their excellent communication and ability to answer our demands quickly and efficiently."**

*- Mike Richardson, Branch Manager Bay Equity Home Loans*











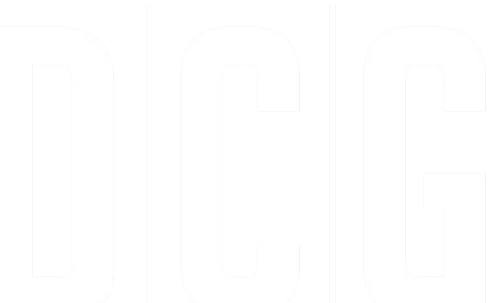
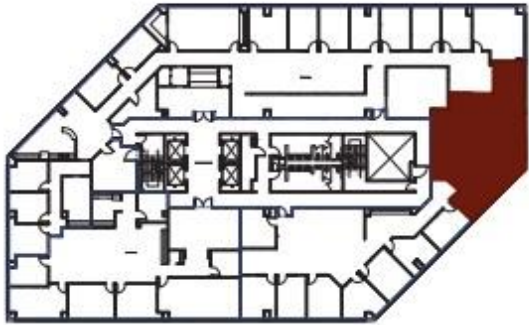
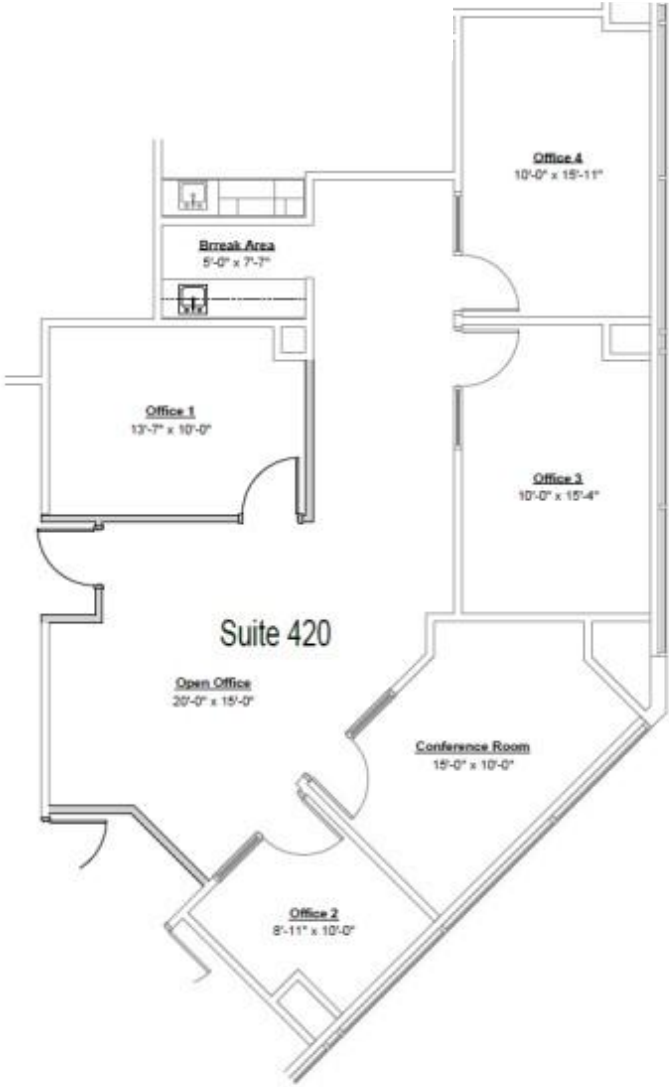
# DOWNTOWN AREA MAP

- Reno Aces Ballpark
- Starbucks
- Pine State Biscuits
- Patagonia
- La Famiglia
- Pioneer Center for Performing Arts
- Renaissance Reno Downtown Hotel by Marriott
- Old Granite Street Eatery
- Washoe Public House
- Peg's Glorified Ham And Eggs
- Nevada Museum of Art
- The Depot
- Bertha Miranda's
- Mellow Fellow Gastropub
- Smith and River



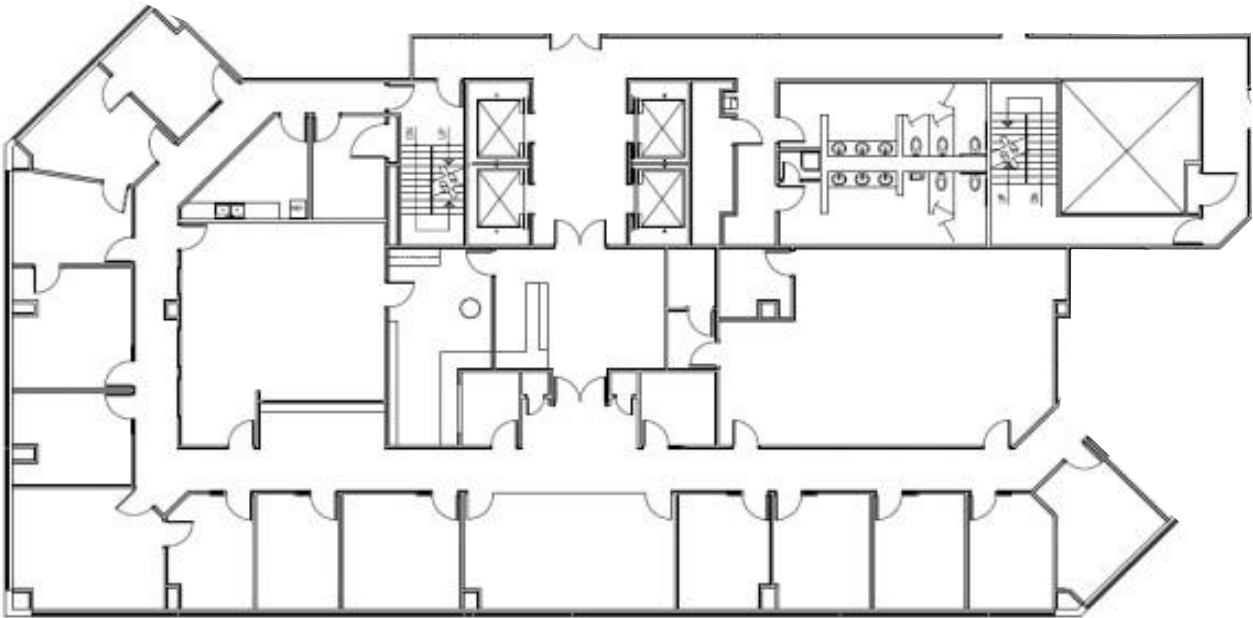
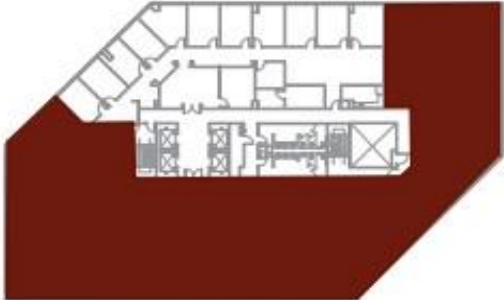
# FLOOR PLAN

Suite 420 | 1,560 SF



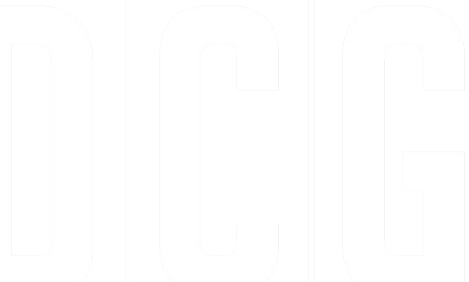
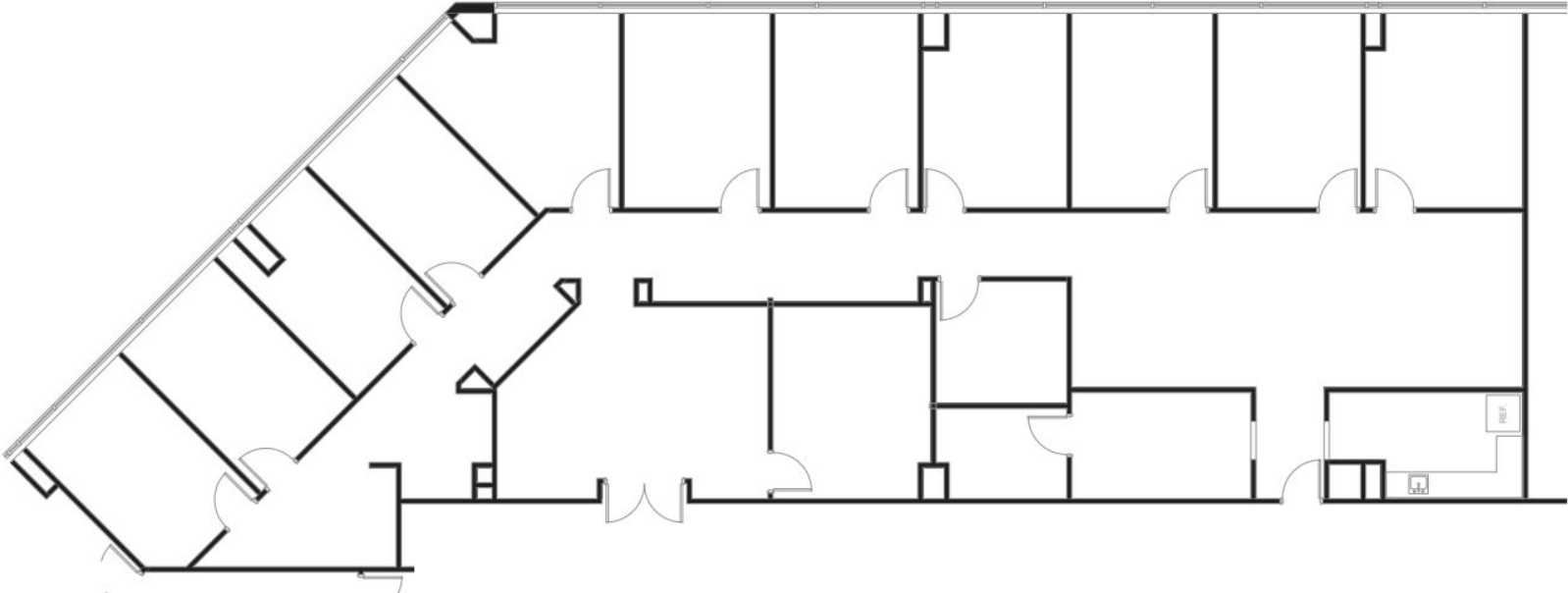
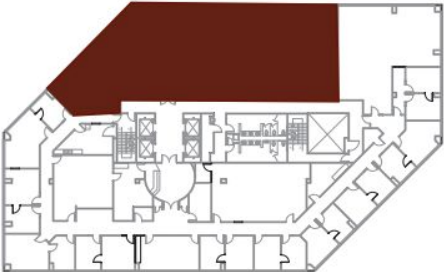


**FLOOR PLAN**  
Suite 500 | 8,407 SF



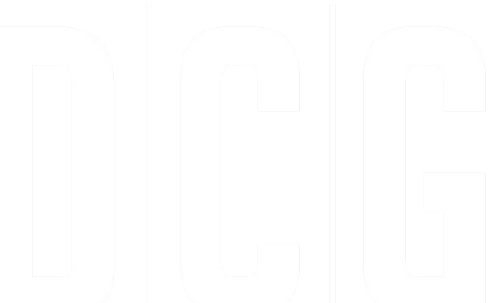
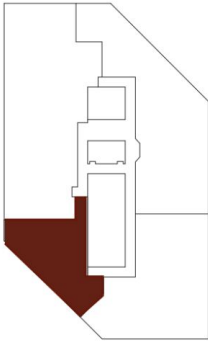
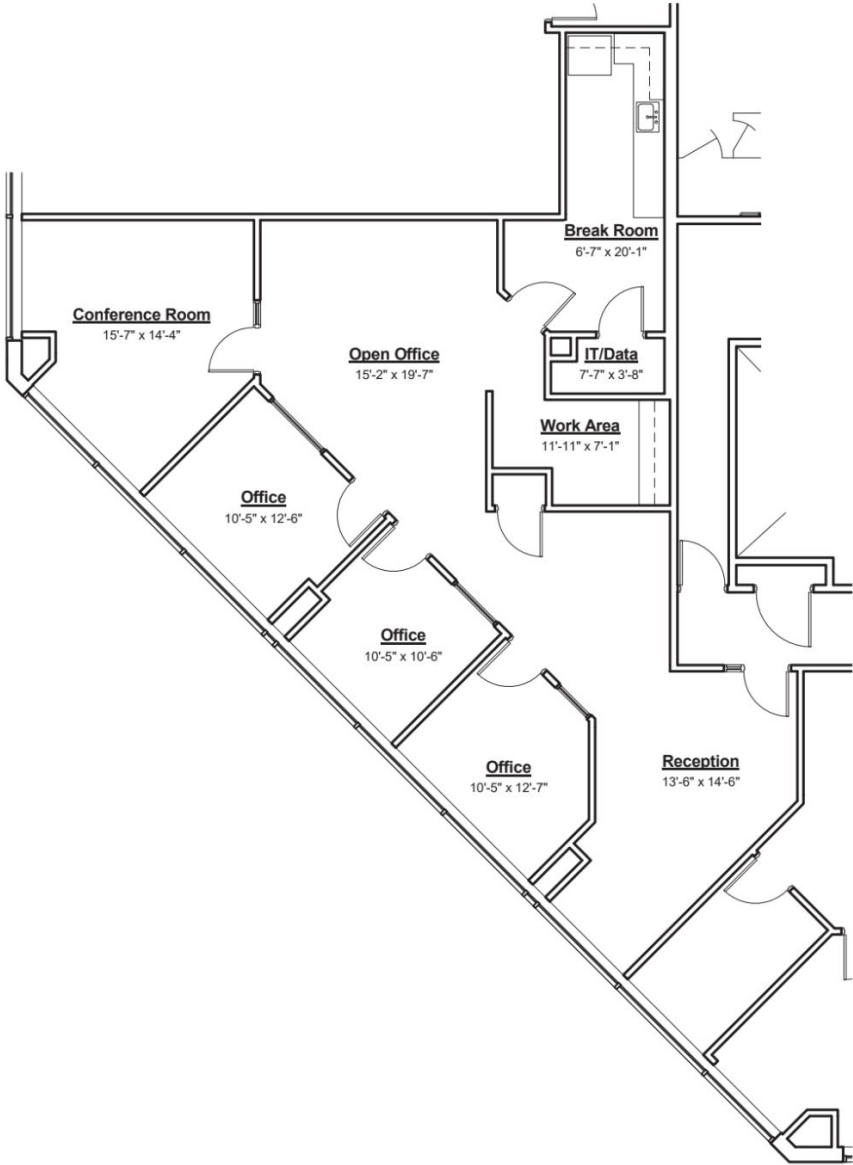
# FLOOR PLAN

Suite 510 | 4,933 SF  
Available 12/1/2024



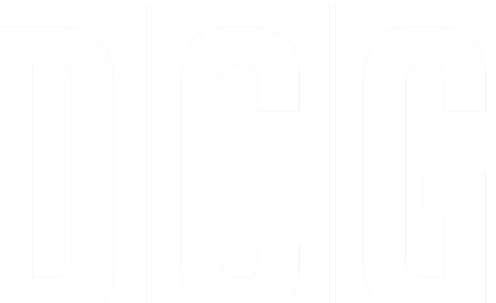
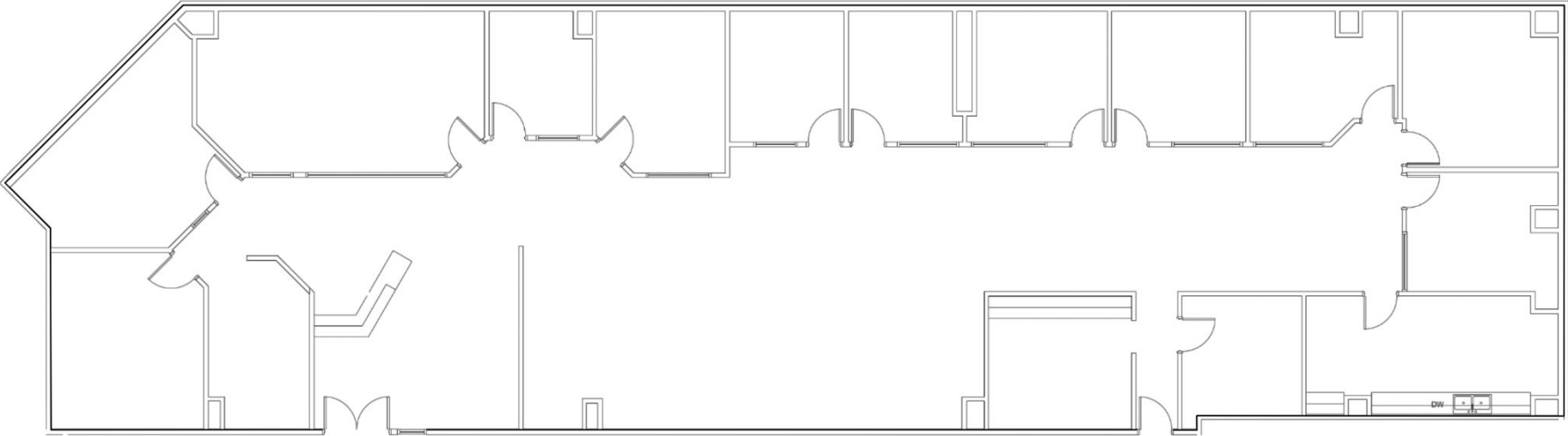
# FLOOR PLAN

Suite 645 | 2,227 SF



**FLOOR PLAN**

**Suite 900 | 6,372 SF**



# FLOOR PLAN

Suite 920 | 2,535 SF



# FLOOR PLAN

Suite 1020 | 1,067 SF

