

DOWNTOWN OFFICE FOR LEASE

50 West Liberty

Reno, NV 89501

**Vibrant space in the center
of the Financial and Legal
Districts**

**SPACE AVAILABLE
1,067 SF - 8,407 SF**



View Drone Video

DOMINIC BRUNETTI, CCIM
PRINCIPAL
775.850.3109 OFFICE
dbrunetti@dicksoncg.com
S.58419

PATRICK RIGGS
775.220.4957 CELL
priggs@dicksoncg.com
S.180878





Walk Score - **96**
WALKER'S PARADISE

LOCATION HIGHLIGHTS

- Premier downtown location, in the center of it all
- Large lobby with upscale, professional look and feel
- Two onsite restaurants and the 50 West Eats lobby café
- Secure, ample covered parking for your employees and clients
- On-site property management & facility engineer
- On-site concierge to provide tenant services
- Less than five minutes to multiple entrances to both I-80 and HWY 395
- Direct access to public transit
- Next to federal and county courts
- Close proximity to the Reno/Tahoe International Airport



 **BASIN STREET**
PROPERTIES EST. 1974





"Basin Street provides wonderful office spaces and facilities. We appreciate their excellent communication and ability to answer our demands quickly and efficiently."

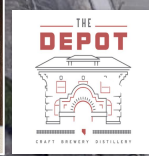
- Mike Richardson, Branch Manager Bay Equity Home Loans











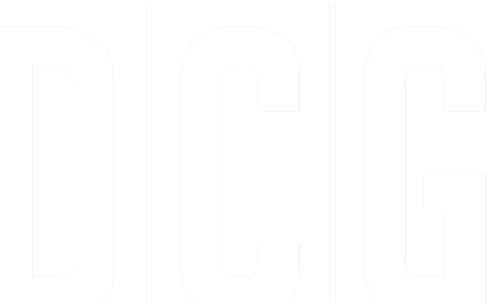
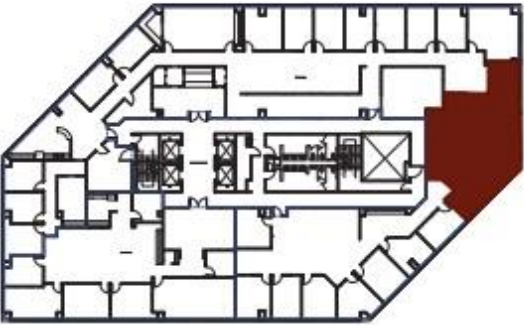
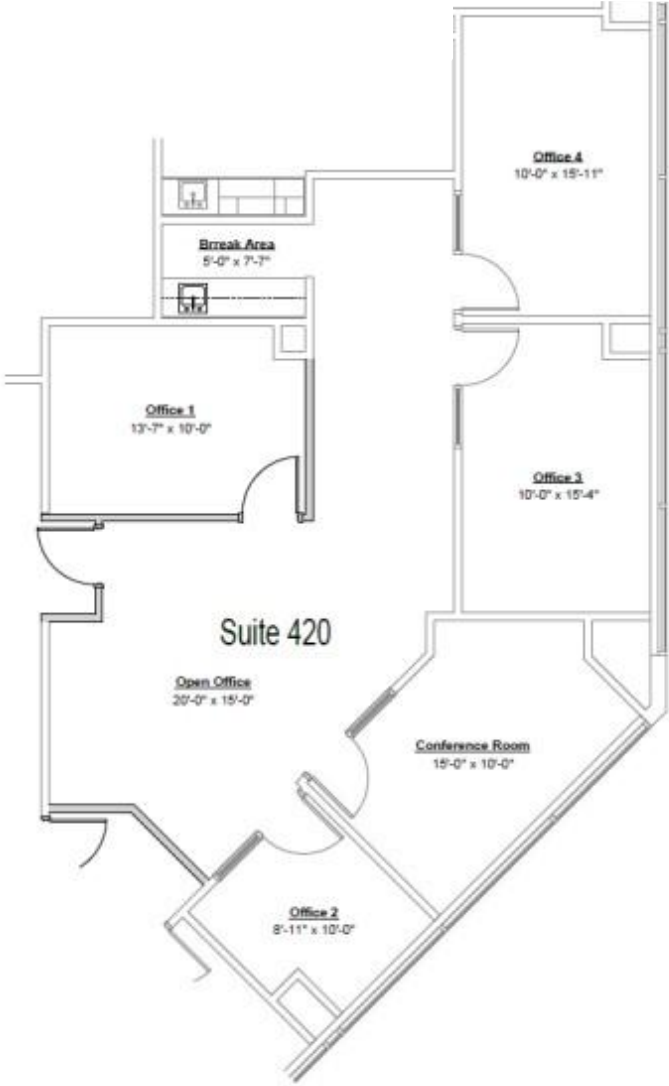
DOWNTOWN AREA MAP

- Reno Aces Ballpark
- Starbucks
- Pine State Biscuits
- Patagonia
- La Famiglia
- Pioneer Center for Performing Arts
- Renaissance Reno Downtown Hotel by Marriott
- Old Granite Street Eatery
- Washoe Public House
- Peg's Glorified Ham And Eggs
- Nevada Museum of Art
- The Depot
- Bertha Miranda's
- Mellow Fellow Gastropub
- Smith and River



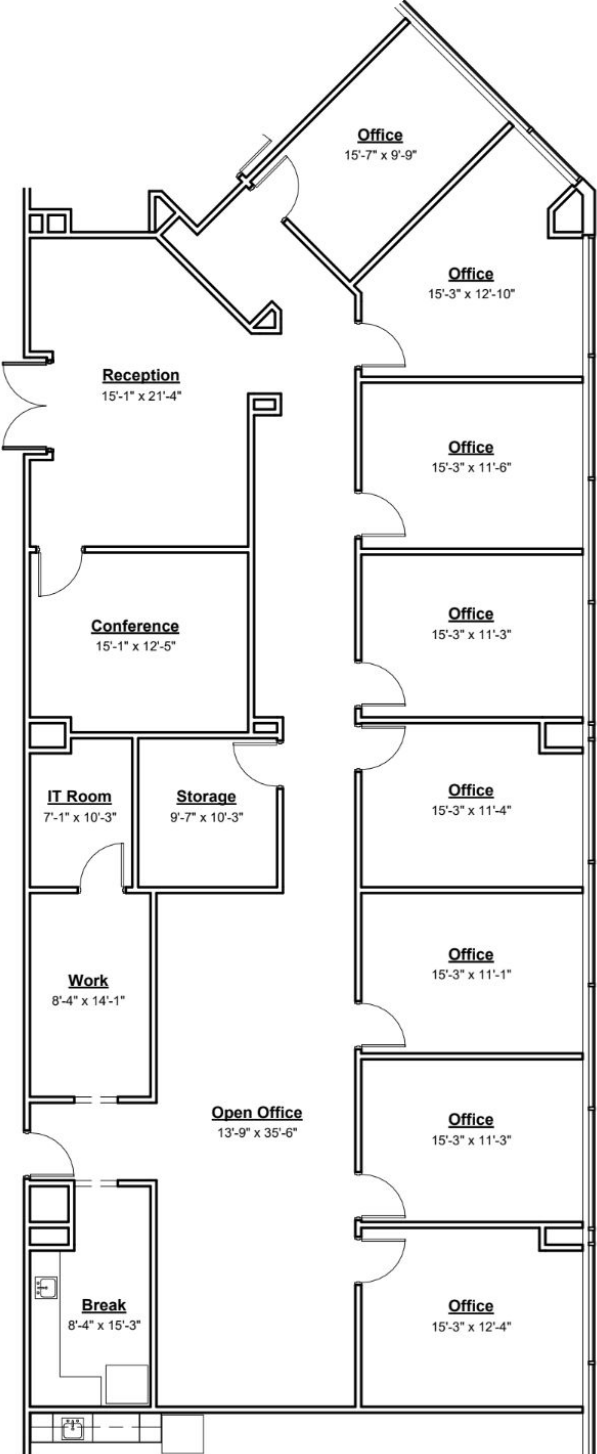
FLOOR PLAN

Suite 420 | 1,560 SF



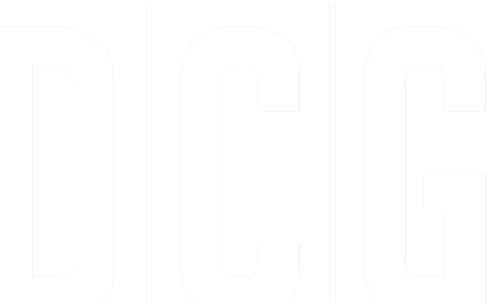
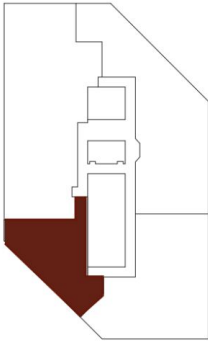
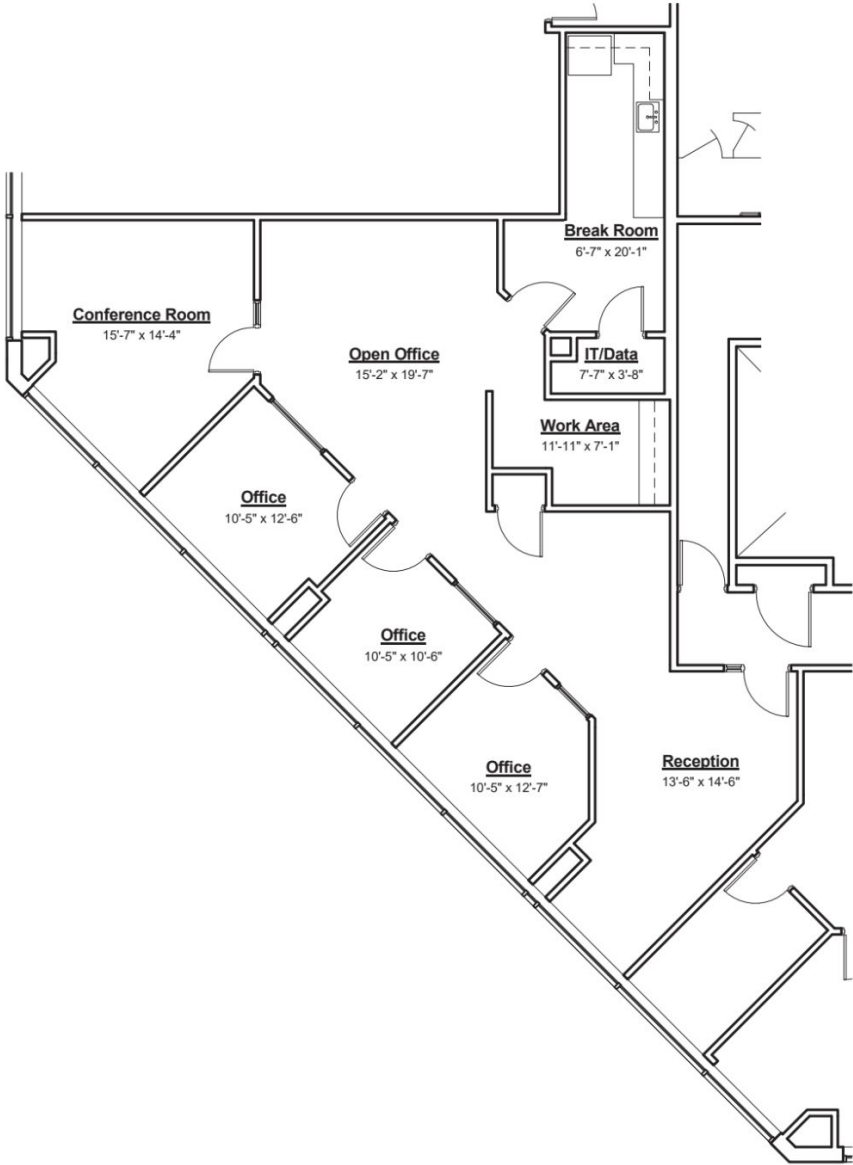
FLOOR PLAN

Suite 510 | 4,040 SF



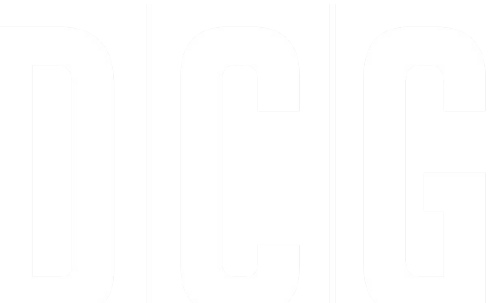
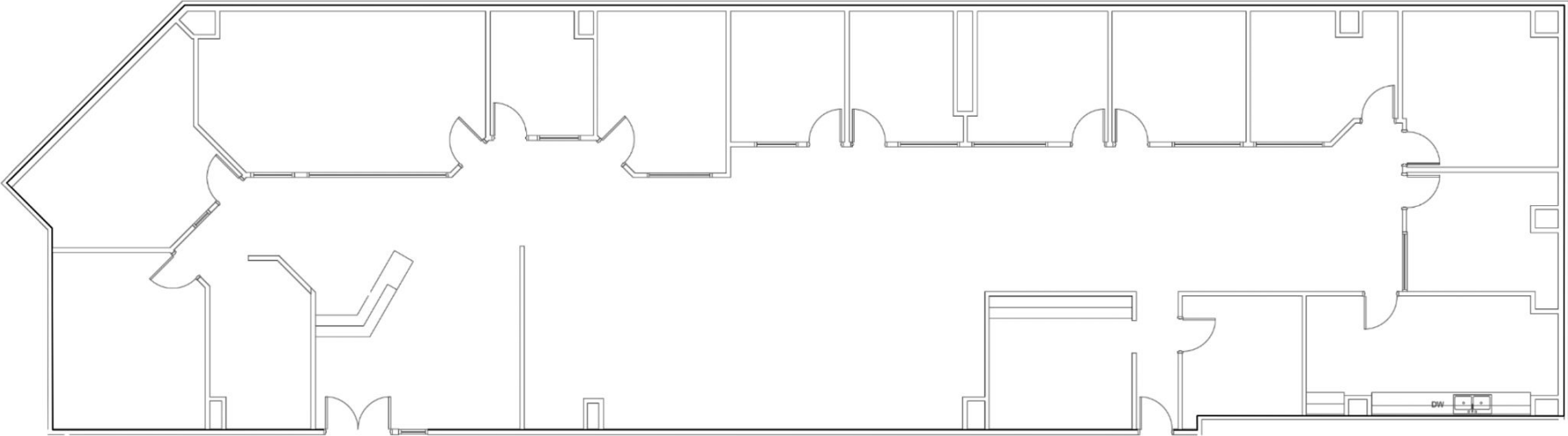
FLOOR PLAN

Suite 645 | 2,227 SF



FLOOR PLAN

Suite 900 | 6,372 SF



FLOOR PLAN

Suite 920 | 2,535 SF



FLOOR PLAN

Suite 1020 | 1,067 SF

