

FOR LEASE

3700 Old Redwood Highway

One Office Suite available 3,471 SF



FOUNTAIN GROVE EXECUTIVE CENTER

EXCLUSIVELY MARKETED BY:

Shawn Johnson
BRE# 00835502

Danny Jones
BRE# 01255048

Keegan & Coppin

528-1400 | www.KeeganCoppin.com



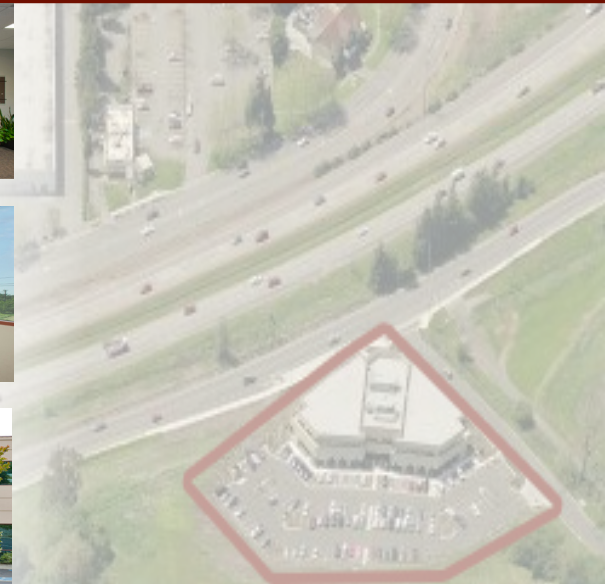
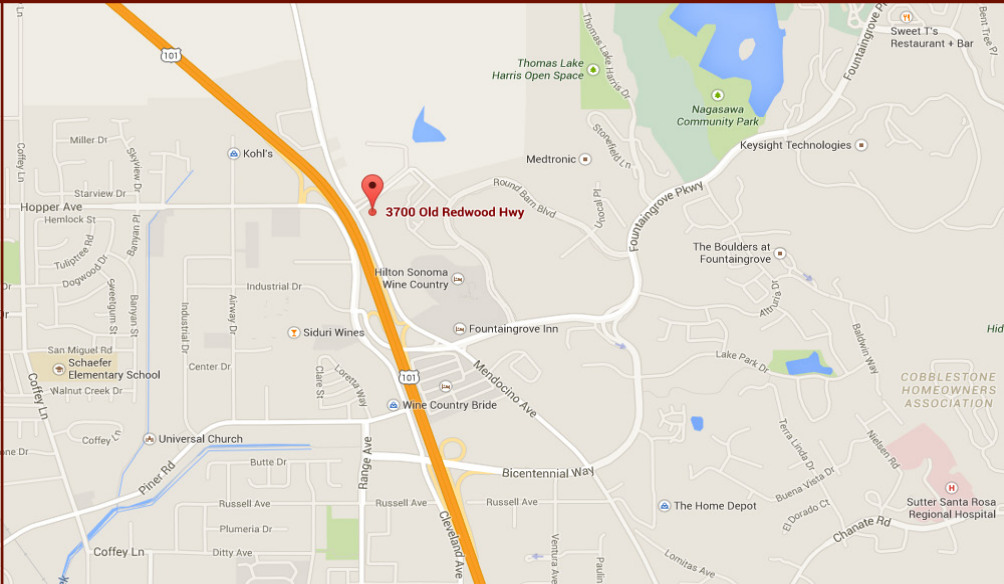
BASIN STREET
PROPERTIES

basin-street.com

While not guaranteed, has been secured from sources we believe to be reliable. Submitted with a 30-day withdrawal. An interested party should verify the status of the property and the information herein.

FOR LEASE

3700 Old Redwood Highway



- Premier high identity location, visible from Hwy 101
- Lobby with upscale, professional look and feel
- Ample free parking for your employees and clients
- Expansive window line & spectacular wine country views
- HVAC Energy Management System
- 24/7 access with key card entry system
- Easy HWY 101 access & 3.5 miles to Downtown Santa Rosa
- Direct access to public transit
- Close proximity to many services, restaurants and golf
- Prompt decision-making and uncomplicated negotiations by local, reputable owner

Variety of tenants include such firms as: Silicon Valley Bank, Wells Fargo Advisors, Heartland Homecare & Mendocino Forest Products

EXCLUSIVELY MARKETING BY:

Shawn Johnson

BR#: 00835502

Danny Jones

BR#: 01255048



707-528-1400 | www.KeeganCoppin.com

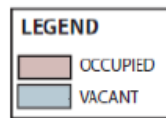
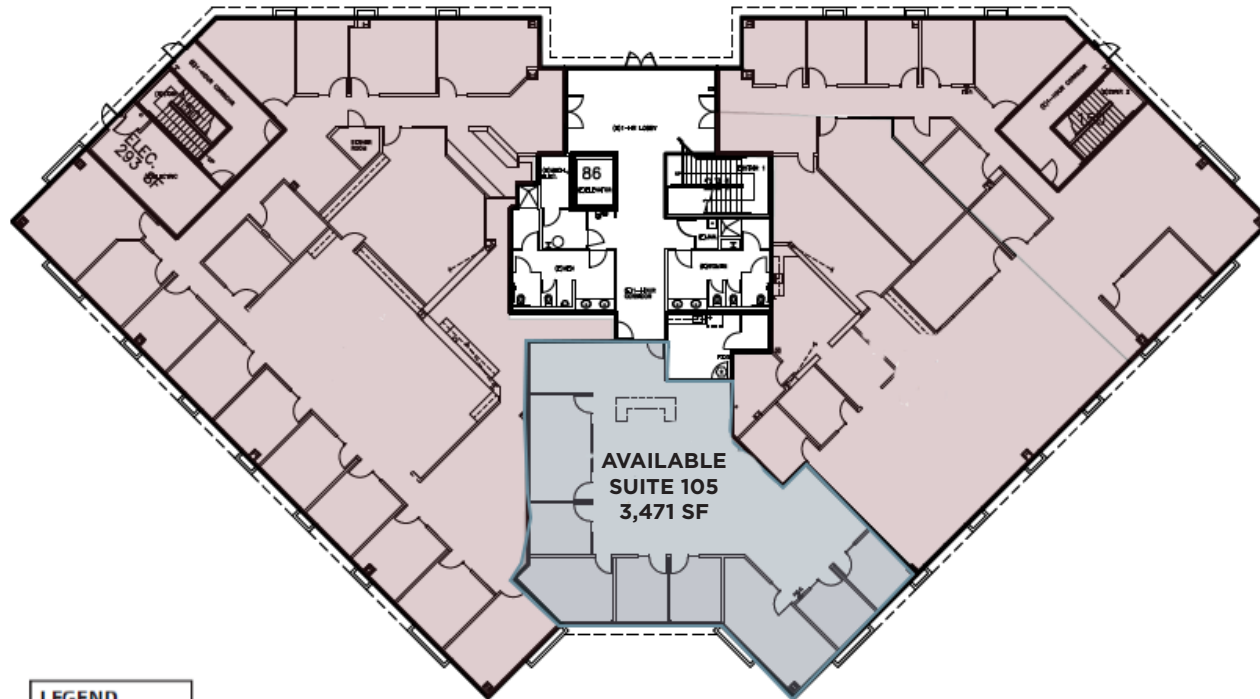

BASIN STREET
PROPERTIES

basin-street.com

FOR LEASE

3700 Old Redwood Highway

First Floor



Suite 105: 3,471 SF

EXCLUSIVELY MARKETED BY:

Shawn Johnson

BRE#: 00835502

Danny Jones

BRE#: 01255048



707-528-1400 | www.KeeganCoppin.com



BASIN STREET
PROPERTIES

basin-street.com