

1800 S. MCDOWELL BLVD | PETALUMA, CA

FOR LEASE

# 1800 SOUTH



FOR LEASE



## 1800 SOUTH MCDOWELL | PETALUMA, CA

±28,890 SQ FT of Class A Office with Beautiful Park Views

- Class 'A' office space
- Available spaces:
  - Suite 210: ±13,523 SF (\$2.40 Full Service)**
  - Suite 220: ±8,165 SF (\$2.40 Full Service)**
  - Suite 230: ±7,202 SF (\$2.40 Full Service)**
- Expansive glass lines offering abundant natural light and quality views of the adjacent Shollenberger Park
- Finished ceiling height ranging from 10' to 18'
- 3.6/1,000 parking ratio
- Near Starbucks, restaurants and other food and beverage amenities
- Prompt decision-making and uncomplicated negotiations by local, reputable owner
- Showers, lockers and bike lockers

**Trevor Buck | Executive Director**

T +1 415 451 2436  
trevor.buck@cushwake.com  
CA License #01255462

**Steven Leonard | Managing Director**

T +1 415 451 2434  
steven.leonard@cushwake.com  
CA License #00909604

**Brian Foster | Managing Director**

T +1 415 451 2437  
brian.foster@cushwake.com  
CA License #01393059

FOR LEASE



## AMENITIES:

- Bordering 500 acres of protected wetlands bird sanctuary at Shollenberger Park, featuring walking paths, work out opportunities, or just an escape from the office.
- Just blocks from additional retail centers offering Lakeville Fitness, many other restaurant choices and retail services.
- Easy access to Highways 116 and 101, 37, and downtown Petaluma.

### Trevor Buck | Executive Director

T +1 415 451 2436  
trevor.buck@cushwake.com  
CA License #01255462

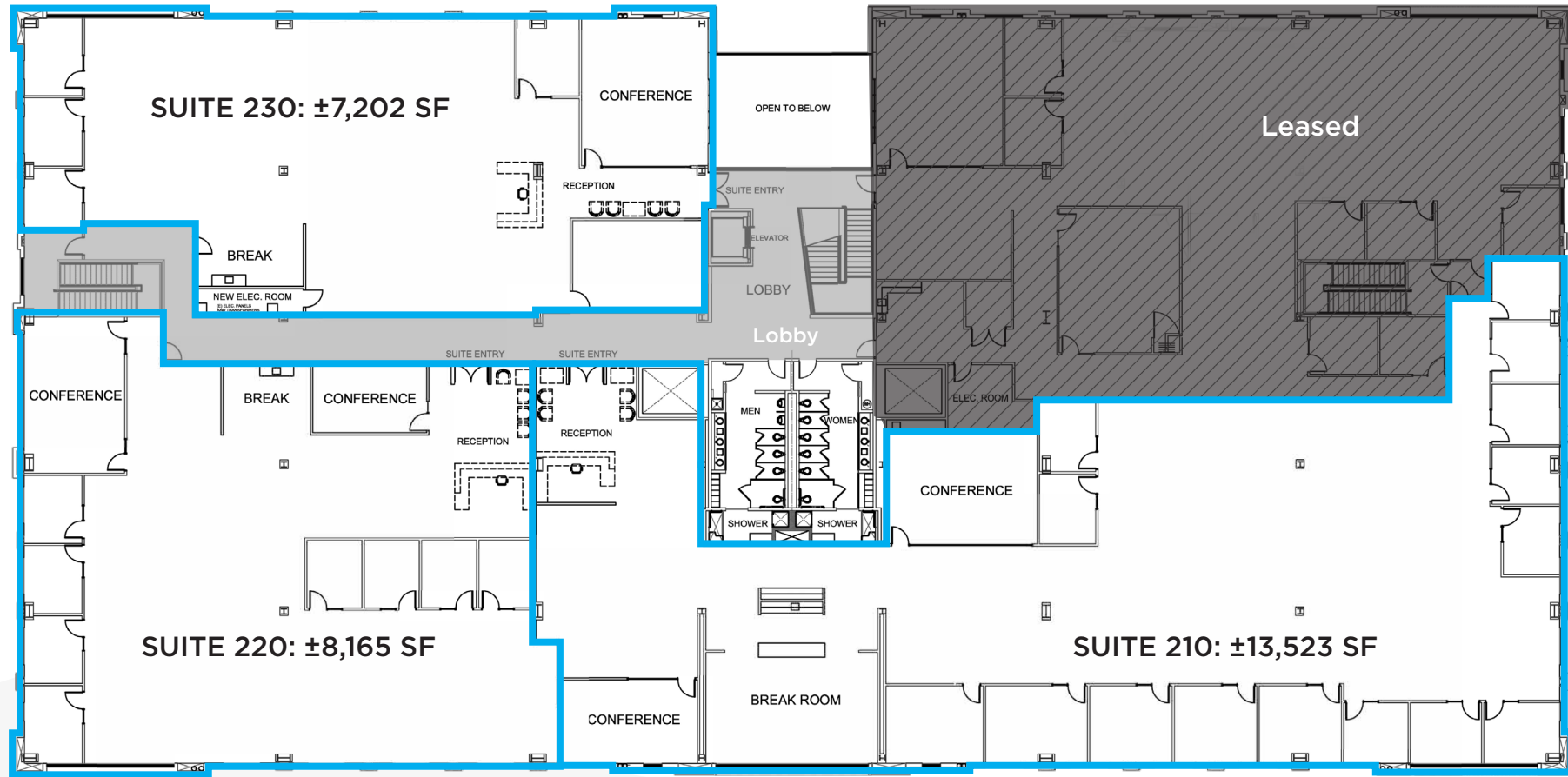
### Steven Leonard | Managing Director

T +1 415 451 2434  
steven.leonard@cushwake.com  
CA License #00909604

### Brian Foster | Managing Director

T +1 415 451 2437  
brian.foster@cushwake.com  
CA License #01393059

FOR LEASE



1800 SOUTH MCDOWELL | PETALUMA, CA

2ND FLOOR PLAN

• SPACE AVAILABLE:

**Suite 210: ±13,523 SF (\$2.40 Full Service)**

**Suite 220: ±8,165 SF (\$2.40 Full Service)**

**Suite 230: ±7,202 SF (\$2.40 Full Service)**

**Trevor Buck | Executive Director**

T +1 415 451 2436

trevor.buck@cushwake.com

CA License #01255462

**Steven Leonard | Managing Director**

T +1 415 451 2434

steven.leonard@cushwake.com

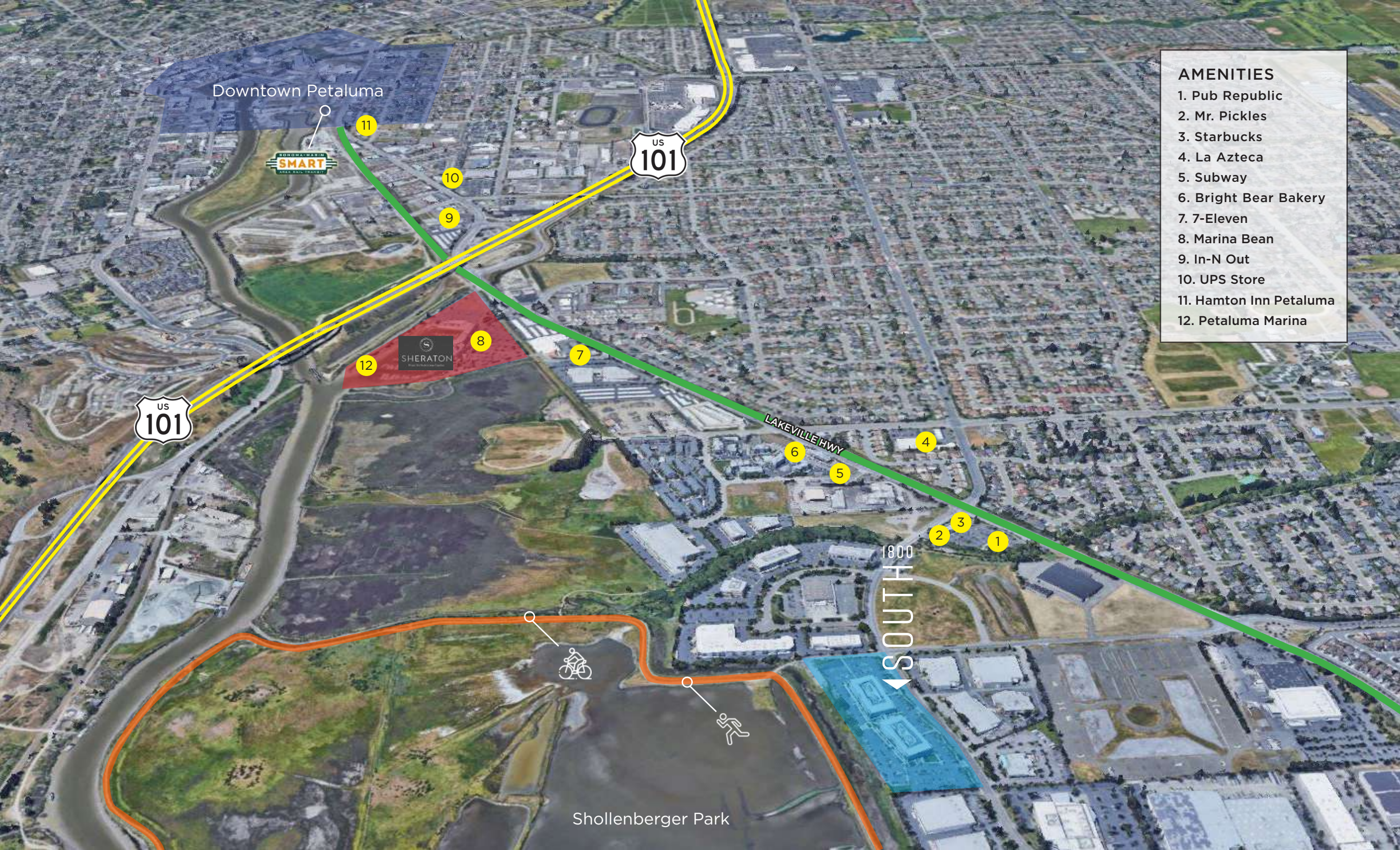
CA License #00909604

**Brian Foster | Managing Director**

T +1 415 451 2437

brian.foster@cushwake.com

CA License #01393059



Downtown Petaluma



LAKEVILLE HWY

1800  
SOUTH

Shollenberger Park

- AMENITIES**
1. Pub Republic
  2. Mr. Pickles
  3. Starbucks
  4. La Azteca
  5. Subway
  6. Bright Bear Bakery
  7. 7-Eleven
  8. Marina Bean
  9. In-N Out
  10. UPS Store
  11. Hamton Inn Petaluma
  12. Petaluma Marina

11

10

9

12

8

7

6

5

4

2

3

1

## ABOUT CUSHMAN & WAKEFIELD

The new Cushman & Wakefield draws on the best of both legacy organizations (DTZ and Cushman & Wakefield) to create one of the world's largest real estate services firms, with a combined total of \$5 billion in revenue, 43,000 employees, more than 4.3 billion square feet under management, and \$191 billion in transaction value. Cushman & Wakefield now operates in more than 60 countries around the world and is well positioned in every major market for continued growth.

The new Cushman & Wakefield is a top-tier global commercial real estate services provider in every service line and every major geography in the world. With a tenacious, entrepreneurial, and client-centric culture of highly skilled people behind both firms, the new company will be able to tap into greater resources worldwide to ultimately deliver superior results for clients. Please visit [cushmanwakefield.com](http://cushmanwakefield.com) for more information.

## ABOUT BASIN STREET PROPERTIES

Founded in 1974, Basin Street Properties has truly come a long way. The company has grown from the small entrepreneurial firm of the early years to owning and managing close to five million square feet of commercial real estate across two states. As a privately held company, Basin Street remains unique in the industry relative to the speed and ease that decisions - and deals - can be made.

Basin Street's investment in Petaluma is clearly their principal legacy; it has changed the fabric of that town forever. The company has demonstrated a profound understanding of how real estate can change a community, and strives to shape that impact with every development or investment in their current markets of Petaluma, Santa Rosa, Sacramento and Reno. Today, Basin Street has the right team in place to successfully navigate rapid growth. Just like in days past, their focus remains on "creating environments where you can thrive."



BRIAN FOSTER



STEVEN LEONARD



TREVOR BUCK



SCOTT STRANZL



MIKE WILLIAMS



KYLE YOUNG



BRIAN FOSTER

[BRIAN.FOSTER@CUSHWAKE.COM](mailto:BRIAN.FOSTER@CUSHWAKE.COM)

+1 415 451 2437

LIC #01393059

STEVEN LEONARD

[STEVEN.LEONARD@CUSHWAKE.COM](mailto:STEVEN.LEONARD@CUSHWAKE.COM)

+1 415 451 2434

LIC #00909604

TREVOR BUCK

[TREVOR.BUCK@CUSHWAKE.COM](mailto:TREVOR.BUCK@CUSHWAKE.COM)

+1 415 451 2436

LIC #01255462



BRIAN FOSTER

[BRIAN.FOSTER@CUSHWAKE.COM](mailto:BRIAN.FOSTER@CUSHWAKE.COM)

+1 415 451 2437

LIC

#01393059

STEVEN LEONARD

[STEVEN.LEONARD@CUSHWAKE.COM](mailto:STEVEN.LEONARD@CUSHWAKE.COM)

+1 415 451 2434

LIC

#00909604

TREVOR BUCK

[TREVOR.BUCK@CUSHWAKE.COM](mailto:TREVOR.BUCK@CUSHWAKE.COM)

+1 415 451 2436

LIC

#01255462